

TRAVEL ADVISORY: VHF

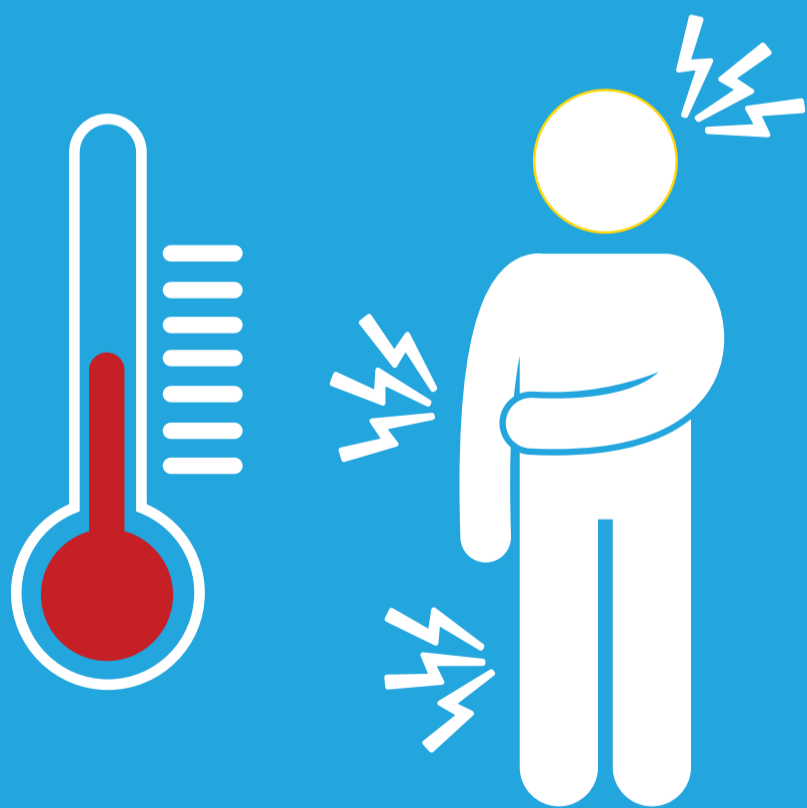
If you have travelled to a viral haemorrhagic fever (VHF) affected area within the past 3 weeks

or

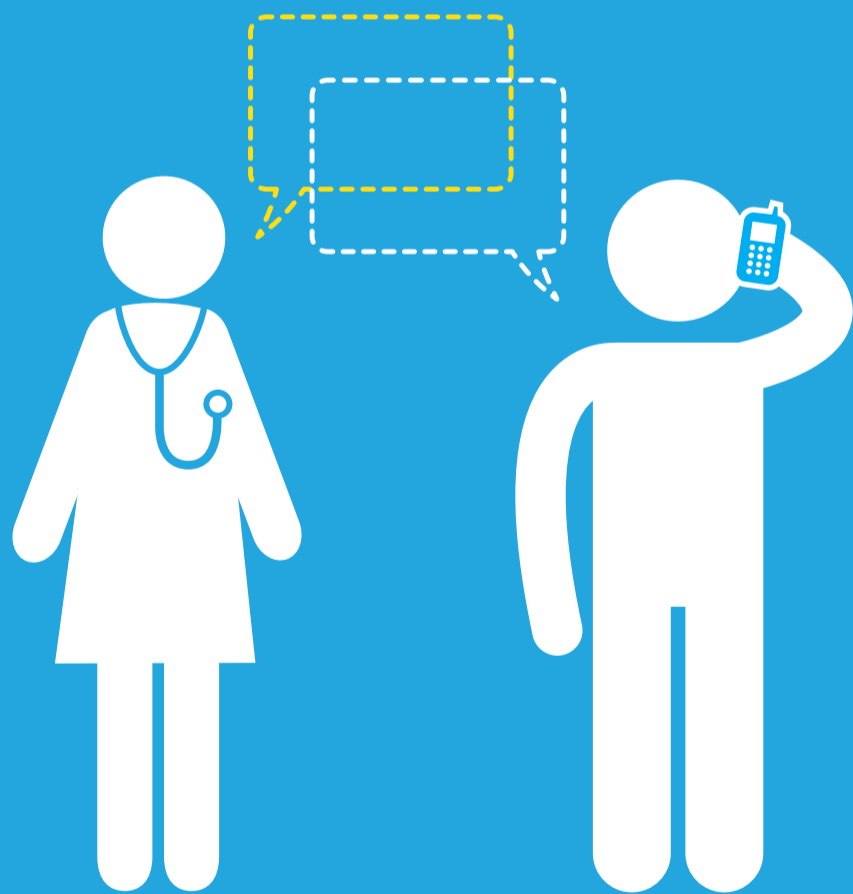
if you have been in contact with someone recently returned from a VHF affected area.

AND

HAVE A **TEMPERATURE**,
OR ARE FEELING
GENERALLY UNWELL



**PLEASE INFORM STAFF,
IMMEDIATELY.**



VHF includes the following: Ebola, Lassa, Marburg and Crimean Congo Haemorrhagic Fever (CCHF).



Building a
Better Health
Service

Seirbhís Sláinte
Níos Fearr
á Forbairt



FOR MORE INFORMATION ON VHF AFFECTED COUNTRIES,
VISIT THE HEALTH PROTECTION SURVEILLANCE CENTRE.

WWW.HPSC.IE