

Background

The national immunisation uptake statistics, based on available data, for Quarter 2 2016 are presented in this report. These immunisation uptake statistics relate to children at 12 (born between 01/04/2015 and 30/06/2015) and 24 (born between 01/04/2014 and 30/06/2014) months of age in Quarter 2-2016. These children were recommended the vaccines outlined in table 1. Please note the immunisation schedule changed in 2015 for children born on or after July 1st 2015 and changed in 2016 for children born on or after October 1st 2016. Please see the HSE-National Immunisation Office (NIO) website at <http://www.immunisation.ie> for current and detailed information on the Irish primary childhood immunisation schedule and also recommended vaccinations for older children and adults.

For children at 12 months of age in Quarter 2 2016, immunisation uptake rates of three doses of vaccines against diphtheria (D₃), pertussis (P₃), tetanus (T₃), *Haemophilus influenzae* type b (Hib₃), polio (Polio₃), hepatitis B (HepB₃), two doses of meningococcal serogroup C conjugate vaccine (MenC₂), two doses of pneumococcal conjugate vaccine (PCV₂) and one dose of BCG vaccine are reported.

For children at 24 months of age in Quarter 2 2016, immunisation uptake rates of three doses of vaccines against diphtheria (D₃), pertussis (P₃), tetanus (T₃), *Haemophilus influenzae* type b (Hib₃), polio (Polio₃), hepatitis B (HepB₃), meningococcal group C (MenC₃) and pneumococcal conjugate vaccine (PCV₃) and one dose of vaccine against measles, mumps and rubella (MMR₁) are reported. One dose of vaccine against *Haemophilus influenzae* type b (Hib_b), one dose of meningococcal group C vaccine (MenC_b) and one dose of pneumococcal conjugate vaccine (PCV_b) given on or after 12 months of age are also reported.

The uptake statistics are also presented in this report by Community Healthcare Organisation (CHO) and Local Health Office (LHO). While there are 32 LHOs the immunisation uptake data for North Lee and South Lee are reported as a combined figure. The uptake rates presented here were rounded to zero decimal place.

Table 1. Primary childhood immunisation schedule for children born between 01/07/2008 and 30/06/2015

Age	Vaccines
Birth	BCG
2 months	DTaP/Hib/IPV/HepB (6 in 1) + PCV
4 months	DTaP/Hib/IPV/HepB (6 in 1) + MenC
6 months	DTaP/Hib/IPV/HepB (6 in 1) + PCV + MenC
12 months	MMR + PCV
13 months	MenC + Hib

Please note the primary immunisation schedule changed in 2015 for children born on or after 01/07/2015 and changed in 2016 for children born on or after October 1st 2016. Please see the HSE-National Immunisation Office (NIO) website at <http://www.immunisation.ie> for current and detailed information on the Irish primary childhood immunisation schedule and also recommended vaccinations for older children and adults

BCG	Bacille Calmette Guérin vaccine
DTaP	Diphtheria, Tetanus and acellular Pertussis vaccine
HepB	Hepatitis B vaccine
Hib	<i>Haemophilus influenzae</i> type b vaccine
IPV	Inactivated Polio Virus vaccine
MenC	Meningococcal group C vaccine
MMR	Measles, Mumps and Rubella vaccine
PCV	Pneumococcal Conjugate Vaccine

Immunisation uptake among children at 12 months of age in Quarter 2-2016

National

- Immunisation uptake rates in children 12 months of age in Q2-2016 are presented by Community Healthcare Organisation (CHO) in table 2.
National immunisation uptake rates were 91% for D₃, T₃, P₃, Hib₃, Polio₃, HepB₃ and PCV₂ and 88% for MenC₂.
- At the time of writing of this report the HSE continues to experience on-going delays with the supply of BCG vaccine. This continues to be a Europe wide issue. The BCG vaccine stock in all areas expired at the end of April 2015 so BCG vaccination clinics in HSE Clinics and Maternity hospitals have been postponed until new stock arrives. There is only one licensed manufacturer of BCG vaccine in the EU. This vaccine manufacturer has informed the HSE that BCG vaccine will not be delivered into Ireland until further notice. Please see <http://www.hse.ie/eng/health/immunisation/pubinfo/babychildimm/vaccprevdisease/tb/> for further information.
BCG uptake data were available for 28 LHOs in Q2-2016; these areas cover approximately 89% of the national birth cohort. Where data were available, national uptake with the available BCG vaccine stock was 9%.
- Figures 1 and 2 present the national uptake rates at 12 months for each vaccine from Q3-2000 to Q2-2016.
Compared to Q1-2016, national uptake rates in Q2-2016 for D₃, T₃, P₃, Hib₃, Polio₃ and HepB₃ decreased by 1%, MenC₂ decreased by 2% and PCV₂ was unchanged (figure 1).

Community Healthcare Organisation (CHO)

- Among the CHOs, the uptake rates for D₃, T₃, P₃, Hib₃, Polio₃, HepB₃ and PCV₂ ranged from 87% to 94%, and MenC₂ ranged from 83% to 92%.

Local Health Office (LHO)

- The immunisation uptake rates by LHO are shown in appendix 1.
- D₃, MenC₂ and PCV₂ immunisation uptake rates are mapped by LHO in figures 3-5.
- The target uptake rate of ≥95% was reached in four LHOs for D₃, T₃, P₃, Hib₃, Polio₃, HepB₃ and PCV₂ and in two LHOs for MenC₂.

Table 2. Immunisation uptake (%) at 12 months in cohort born 01/04/2015–30/06/2015

Community Healthcare Organisation/LHO*	No. in cohort [#]	BCG	D ₃ T ₃	P ₃	Hib ₃	Polio ₃	HepB ₃	MenC ₂	PCV ₂
CHO1 (CN/MN, DL, SO/LM)	1302	22†	92	92	92	92	92	89	93
CHO2 (G, MO, RN)	1510	4	94	94	94	94	94	92	94
CHO3 (CE, L, TN)	1278	10	92	92	92	92	92	88	91
CHO4 (NC, NSL, WC, KY)	2289	22	90	90	90	90	90	86	87
CHO5 (CW/KK, TS, WD, WX)	1670	16	93	93	93	93	93	90	92
CHO6 (DS, DSE, WW)	1231	3	90	90	90	90	90	84	91
CHO7 (DSC, DSW, DW, KE)	2460	3	92	92	92	92	92	88	92
CHO8 (LS/OY, LD/WH, LH, MH)	2195	0†	92	92	92	92	92	91	93
CHO9 (DNW, DNC, DN)	2251	6	87	87	87	87	87	83	87
Ireland	16186†	9†	91	91	91	91	91	88	91

na = not available at this time

*Shown in brackets are the LHOs in each CHO. Please see Appendix 3 to translate LHO codes. The geographical boundaries of the CHOs are shown at http://www.hse.ie/eng/services/publications/corporate/CHO_Chapter_1.pdf

[#] The denominator/number in cohort varied slightly according to vaccine. D₃T₃ cohorts are shown here.

†Number in cohort for BCG is 14,389. BCG data are unavailable for the former HSE North Eastern Area i.e. CN/MN, LH, MH; therefore CHO1 and CHO8 BCG data are incomplete. At the time of writing of this report the HSE continues to experience on-going delays with the supply of BCG vaccine. This continues to be a Europe wide issue. The BCG vaccine stock in all areas expired at the end of April 2015 so BCG vaccination clinics in HSE Clinics and Maternity hospitals have been postponed until new stock arrives. There is only one licensed manufacturer of BCG vaccine in the EU. This vaccine manufacturer has informed the HSE that BCG vaccine will not be delivered into Ireland until further notice. Please see <http://www.hse.ie/eng/health/immunisation/pubinfo/babychildimm/vaccprevdisease/tb/> for further information.

Immunisation uptake among children at 12 months of age in Quarter 2-2016

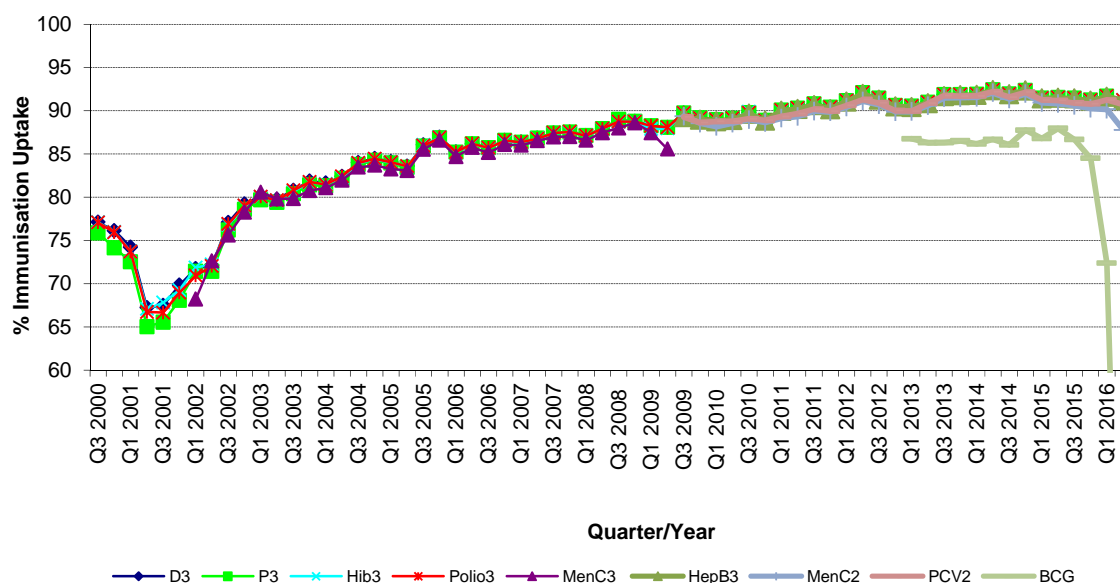


Figure 1. National quarterly immunisation uptake rates at 12 months

X-axis ranges from 60-100%.

At the time of writing of this report the HSE continues to experience on-going delays with the supply of BCG vaccine. This continues to be a Europe wide issue. The BCG vaccine stock in all areas expired at the end of April 2015 so BCG vaccination clinics in HSE Clinics and Maternity hospitals have been postponed until new stock arrives. There is only one licensed manufacturer of BCG vaccine in the EU. This vaccine manufacturer has informed the HSE that BCG vaccine will not be delivered into Ireland until further notice. Please see <http://www.hse.ie/eng/health/immunisation/pubinfo/babychildimm/vaccprevdisease/tb/> for further information.

Since T_3 uptake is identical to D_3 uptake only D_3 uptake figures presented. The Q3-2008 MenC₃ uptake figure is based on data from six of the eight HSE Areas. The Q1-2009 HSE-Eastern Area D_3 , P_3 , T_3 , Polio₃ and MMR₁ uptake figures exclude those born on the 31/03/2007. The Q3-2009 figures are incomplete as two HSE Areas were unable to provide data, two additional areas were unable to provide MenC₂ data and one additional area was unable to provide PCV₂ data. The Q4-2009 figures are incomplete as three HSE Areas were unable to provide data. The Q1-2010 figures are incomplete as two HSE Areas were unable to provide data and three were unable to provide MenC₂ data. The Q2 -2010 figures are incomplete as two HSE Areas were unable to provide data. The Q4-2010 figures are incomplete as one HSE Area was unable to provide data. BCG uptake data are only displayed in this graph from Q1 2013 as BCG uptake data were available for only five of the eight HSE-Areas (this includes data from the HSE-Southern Area which relates to Kerry data only) from Q3 2003 to Q2 2009 (except Q3 2004 when HSE-Southern Area data were not available), for three HSE-Areas in Q3 2009, for two HSE-Areas in Q4 2009, for three HSE-Areas in Q1 2010 and Q2 2010, for five HSE-Areas in Q4 2010, Q1 2011 and Q2 2011, for six HSE-Areas in Q3 2011 to Q4 2012 and for seven HSE Areas from Q1 2013. From Q3 2011 to Q3 2014 HSE Western Area BCG data was not available by LHO, uptake was provided for the HSE Western Area as a whole. In Q4 2014 BCG data was available for Galway and Roscommon- the BCG denominator for HSE Western Area in Q4 2014 was the sum of the Galway and Roscommon denominators. Since Q1 2015 BCG data was available for Galway, Mayo and Roscommon LHOs.

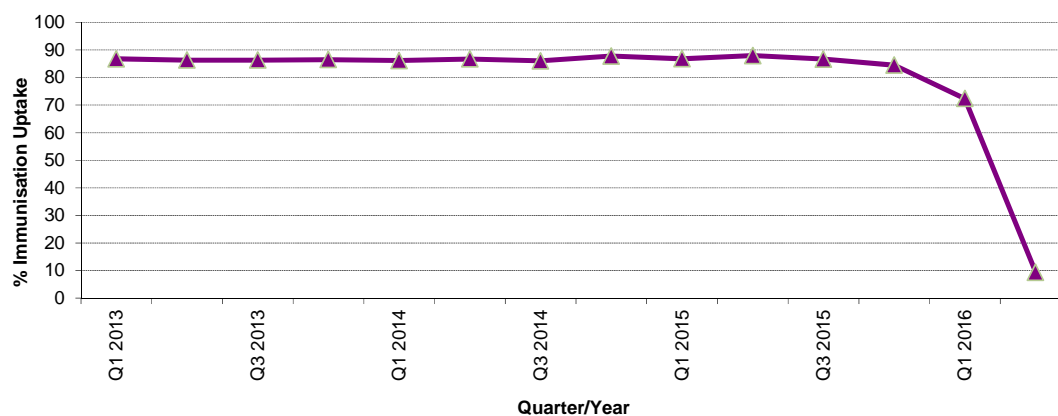


Figure 2. National BCG quarterly immunisation uptake rates at 12 months

At the time of writing of this report the HSE continues to experience on-going delays with the supply of BCG vaccine. This continues to be a Europe wide issue. The BCG vaccine stock in all areas expired at the end of April 2015 so BCG vaccination clinics in HSE Clinics and Maternity hospitals have been postponed until new stock arrives. There is only one licensed manufacturer of BCG vaccine in the EU. This vaccine manufacturer has informed the HSE that BCG vaccine will not be delivered into Ireland until further notice. Please see <http://www.hse.ie/eng/health/immunisation/pubinfo/babychildimm/vaccprevdisease/tb/> for further information.

BCG uptake data are only displayed in this graph from Q1 2013 as BCG uptake data were available for only five of the eight HSE-Areas (this includes data from the HSE-Southern Area which relates to Kerry data only) from Q3 2003 to Q2 2009 (except Q3 2004 when HSE-Southern Area data were not available), for three HSE-Areas in Q3 2009, for two HSE-Areas in Q4 2009, for three HSE-Areas in Q1 2010 and Q2 2010, for five HSE-Areas in Q4 2010, Q1 2011 and Q2 2011, for six HSE-Areas in Q3 2011 to Q4 2012 and for seven HSE Areas from Q1 2013. From Q3 2011 to Q3 2014 HSE Western Area BCG data was not available by LHO, uptake was provided for the HSE Western Area as a whole. In Q4 2014 BCG data was available for Galway and Roscommon- the BCG denominator for HSE Western Area in Q4 2014 was the sum of the Galway and Roscommon denominators. Since Q1 2015 BCG data was available for Galway, Mayo and Roscommon LHOs.

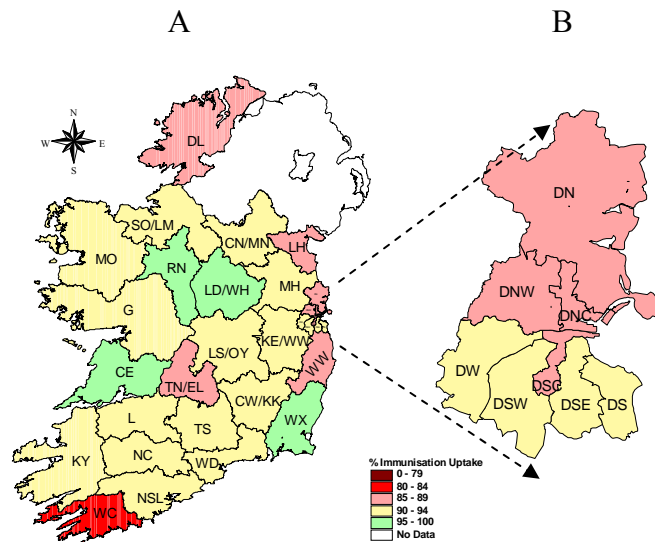


Figure 3. D₃ immunisation uptake rates (%) by LHO, in those 12 months of age in Quarter 2-2016, in (A) Ireland and (B) Dublin. Please see Appendix 3 to translate LHO codes.

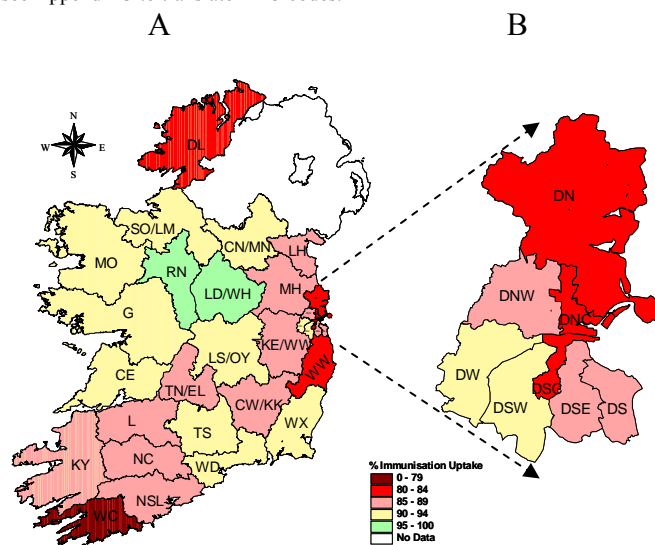


Figure 4. MenC₂ immunisation uptake rates (%) by LHO, in those 12 months of age in Quarter 2-2016, in (A) Ireland and (B) Dublin. Please see Appendix 3 to translate LHO codes.

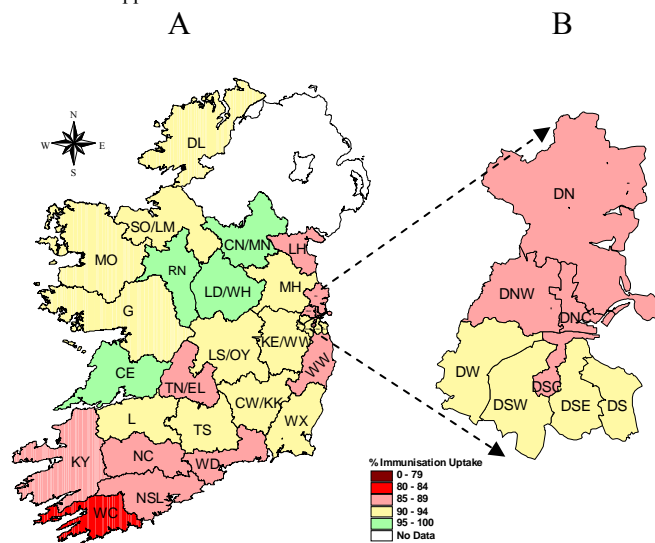


Figure 5. PCV₂ immunisation uptake rates (%) by LHO, in those 12 months of age in Quarter 2-2016, in (A) Ireland and (B) Dublin. Please see Appendix 3 to translate LHO codes.

Immunisation uptake among children 24 months of age in Quarter 2-2016

National

- National uptake rates were 95% for D₃, T₃, P₃, Hib₃, Polio₃ and HepB₃, 92% for MMR₁, 91% for Hib_b and PCV₃ and 87% for MenC₃ (table 3). Compared to the previous quarter, national uptake rates in Q2-2016 were unchanged for these vaccines except MMR₁ which decreased by 1% (figure 6).
- In total, eight of the nine CHOs were able to provide uptake data on MenC_b and PCV_b in Q2-2016. These Areas cover approximately 91% of the national birth cohort. Where data were available, national uptake was 89% for MenC_b and 92% for PCV_b. Compared to the previous quarter PCV_b uptake decreased by 1% and MenC_b uptake was unchanged (figure 6).
- Figure 6 presents the national uptake rates at 24 months for each vaccine from Q1-1999 to Q2-2016.

Community Healthcare Organisations (CHOs)

- The target uptake of ≥95% was reached for D₃, P₃, T₃, Polio₃ and HepB₃ in six CHOs, for Hib₃ in five, for PCV₃ in one and in none for Hib_b, MenC₃, MenC_b, PCV_b and MMR₁ (table 3).

Local Health Office (LHO)

- Immunisation uptake rates in children 24 months of age in Q2-2016 are presented by LHO in Appendix 2.
- D₃, Hib_b, MenC₃, MenC_b, PCV₃, PCV_b and MMR₁ immunisation uptake rates are mapped by LHO in figures 7-13.
- The target uptake of ≥95% was reached in 20 LHOs for D₃, T₃, P₃, Polio₃ and HepB₃, 19 for Hib₃, 10 for MMR₁, 7 for Hib_b, 6 for PCV_b, 4 for PCV₃, 2 for MenC_b and 1 for MenC₃.

Table 3. Immunisation uptake (%) at 24 months in cohort born 01/04/2014–30/06/2014

Community Healthcare Organisation/LHO	No. in Cohort*	D ₃ /T ₃ /P ₃ /Polio ₃	Hib ₃	Hib _b	HepB ₃	MenC ₃	MenC _b	PCV ₃	PCV _b	MMR ₁
CHO1 (CN/MN, DL, SO/LM)	1291	96	95	92	95	88	91	90	93	93
CHO2 (G, MO, RN)	1552	97	97	93	97	93	na	96	na	94
CHO3 (CE, L, TN)	1219	94	94	89	94	87	90	91	92	92
CHO4 (NC, NSL, WC, KY)	2316	95	94	91	95	87	89	91	92	92
CHO5 (CW/KK, TS, WD, WX)	1798	95	95	94	95	87	90	92	93	93
CHO6 (DS, DSE, WW)	1227	93	93	89	93	86	89	90	92	91
CHO7 (DSC, DSW, DW, KE)	2532	96	96	92	96	88	91	91	94	94
CHO8 (LS/OY, LD/WH, LH, MH)	2389	96	96	93	96	88	91	93	94	94
CHO9 (DNW, DNC, DN)	2362	92	92	85	92	81	84	87	89	89
Ireland	16686	95	95	91	95	87	89	91	92	92

Please see Appendix 3 to translate LHO codes

* As the denominator/number in cohort varied slightly according to vaccine D₃T₃ cohorts are shown here

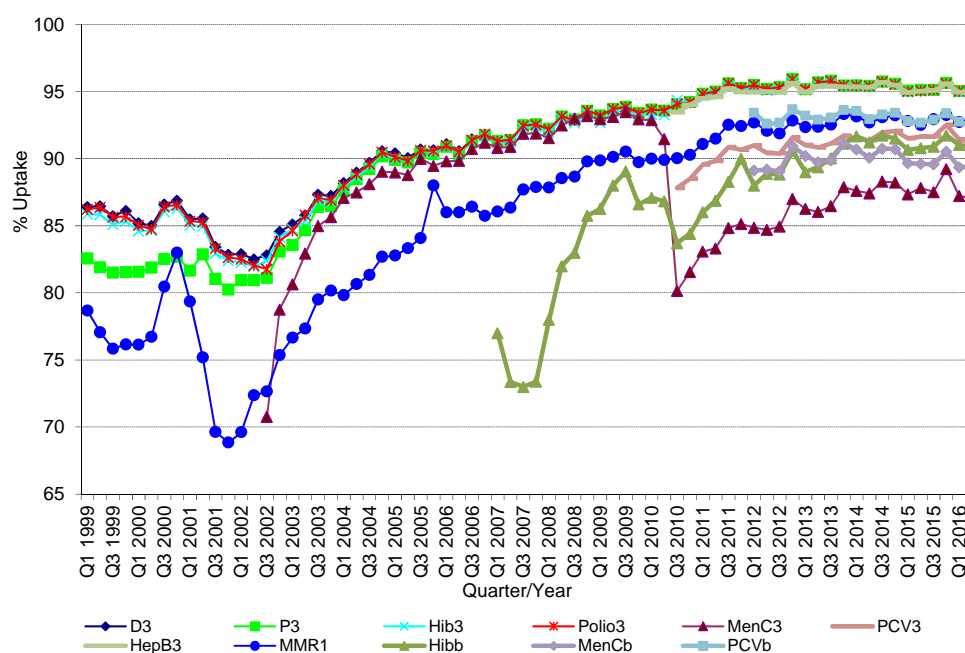


Figure 6. National quarterly immunisation uptake rates at 24 months

Notes: The Q4-2005 MMR₁ figure is based on data from seven of the eight HSE Areas. The Q1-2006 MMR₁ figure includes the HSE-Eastern Area figure that is an estimate only. The Q1-2007, Q3-2007, Q2-2008 and Q3-2008 Hib_b figures are based on data from seven of the eight HSE Areas. In Q1-2008 the HSE-SE changed their Hib_b data extraction method compared to previous quarters; in Q1-2008 the uptake of Hib_b in the HSE-SE was 83% compared to 53% in Q4-2007. The Q3-2008 MenC₃ figure is based on data from six of the eight HSE Areas. The Q1-2009 HSE-Eastern Area D₃, P₃, T₃, Polio₃ and MMR₁ uptake figures exclude those born on the 31/03/2007. The Q2-2009 HSE-Eastern Area Hib_b uptake figures exclude uptake figures from Dublin North. The Q4-2009 figures are based on data from seven of the eight HSE Areas. The Q4-2009 Hib_b figures also exclude uptake figures from Dublin North. The Q1-2010 figures are based on data from six of the eight HSE Areas. The Q1-2010 Hib_b figures also exclude uptake figures from Dublin North. The Q2-2010 and Q4-2010 figures are based on data from seven of the eight HSE Areas. MenC_b and PCV_b data are only available for 6 of the 8 HSE Areas from Q1 2012 to Q4 2014 and for 7 HSE Areas since Q1 2015

Conclusions

In Quarter 2-2016, national uptake rates at 24 months for D₃, T₃, P₃, Hib₃, Polio₃ and HepB₃ reached the target of $\geq 95\%$. Uptake of the remaining vaccines are lower; doses of these remaining vaccines are given at 12 and 13 months of age suggesting that parents are less likely to get the necessary vaccines for their children at this age.

Acknowledgements

HPSC would like to thank all those involved in childhood immunisation including the General Practitioners, Practice Nurses, HSE Areas, Public Health Nurses, Immunisation Co-ordinators, Specialists in Public Health Medicine, Surveillance Scientists and Systems Analysts for their assistance.

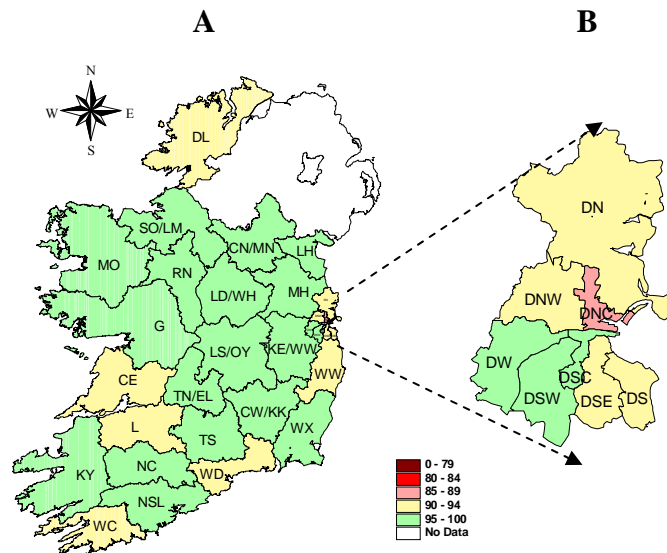


Figure 7. D₃ immunisation uptake rates (%) by LHO, in those 24 months of age in Quarter 2-2016, in (A) Ireland and (B) Dublin. Please see Appendix 3 to translate LHO codes.

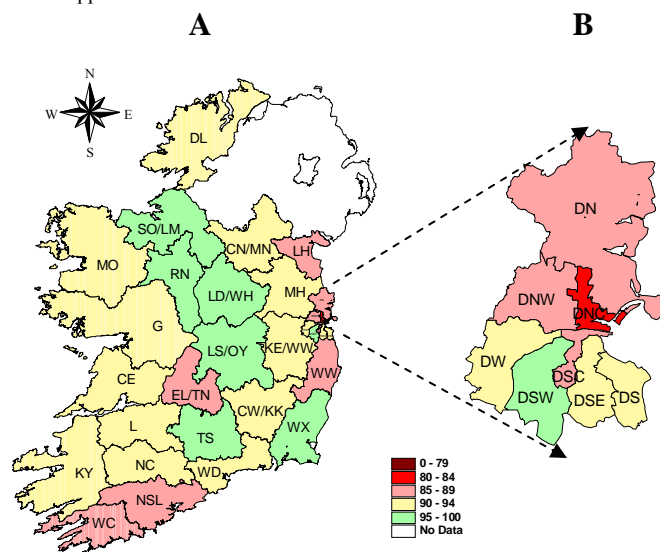


Figure 8. Hib₆ immunisation uptake rates (%) by LHO, in those 24 months of age in Quarter 2-2016, in (A) Ireland and (B) Dublin. Please see Appendix 3 to translate LHO codes.

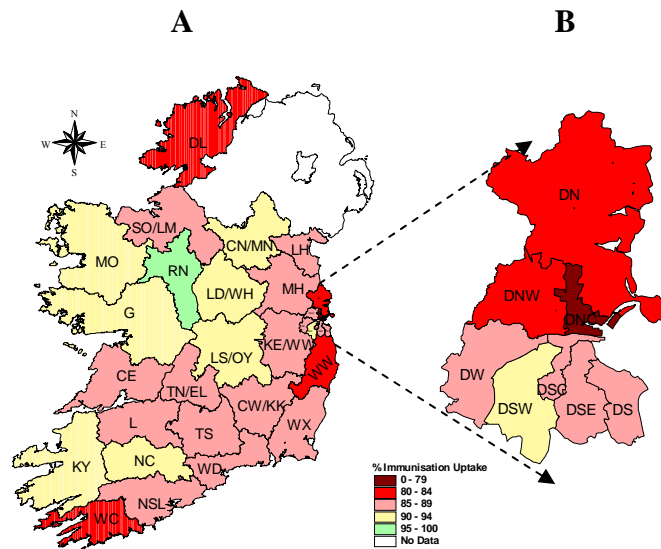


Figure 9. MenC₃ immunisation uptake rates (%) by LHO, in those 24 months of age in Quarter 2-2016, in (A) Ireland and (B) Dublin. Please see Appendix 3 to translate LHO codes.

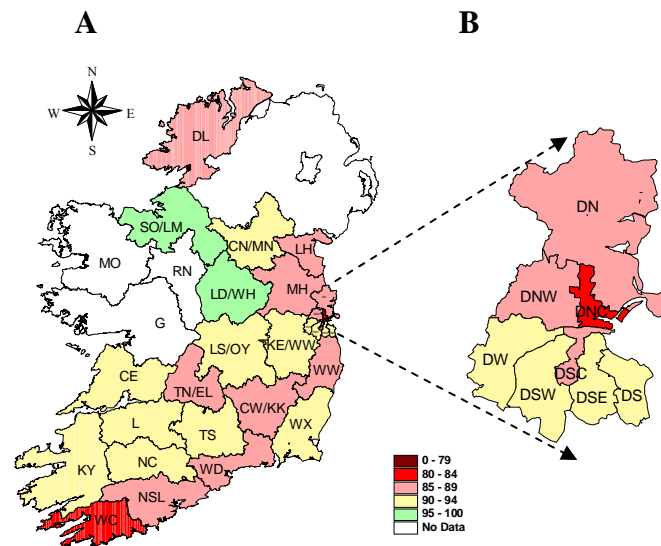


Figure 10. MenC_b immunisation uptake rates (%) by LHO, in those 24 months of age in Quarter 2-2016, in (A) Ireland and (B) Dublin. Please see Appendix 3 to translate LHO codes.

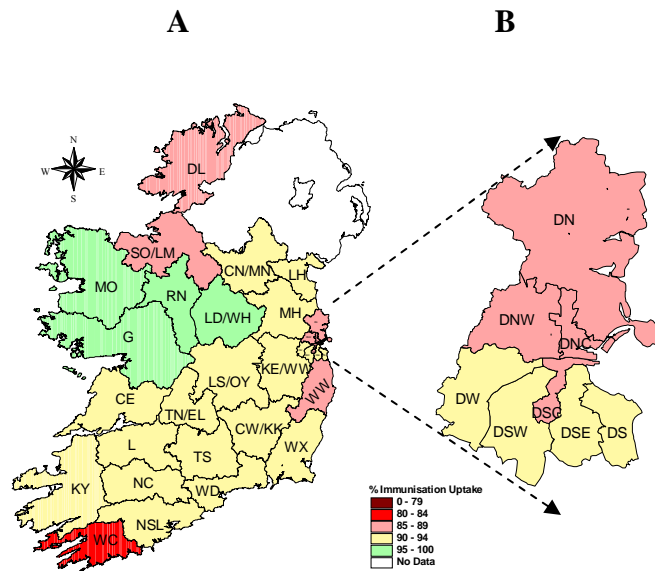


Figure 11. PCV₃ immunisation uptake rates (%) by LHO, in those 24 months of age in Quarter 2-2016, in (A) Ireland and (B) Dublin. Please see Appendix 3 to translate LHO codes.

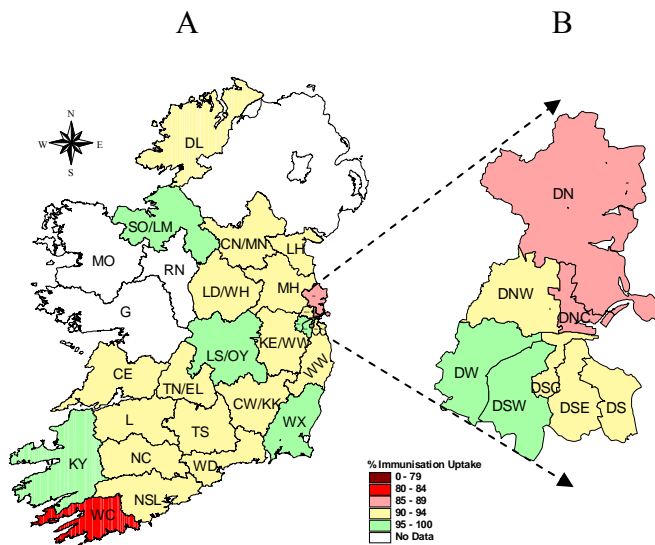


Figure 12. PCV₆ immunisation uptake rates (%) by LHO, in those 24 months of age in Quarter 2-2016, in (A) Ireland and (B) Dublin. Please see Appendix 3 to translate LHO codes.

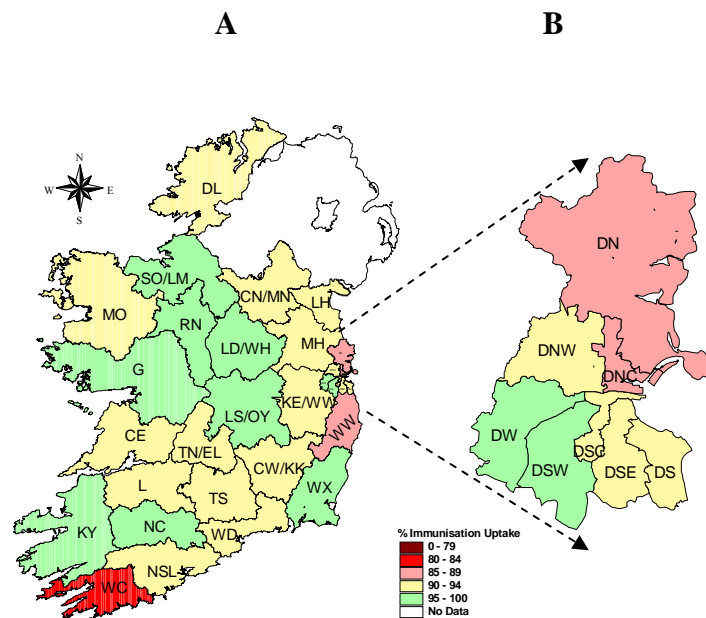


Figure 13. MMR₁ immunisation uptake rates (%) by LHO, in those 24 months of age in Quarter 2-2016, in (A) Ireland and (B) Dublin. Please see Appendix 3 to translate LHO codes.

Appendix 1

Immunisation uptake (%) at 12 months of age in cohort born 01/04/2015-30/06/2015											
Community Healthcare Organisation (CHO)	LHO/CHO	No. in cohort for BCG*	No. in cohort for D ₃ T ₃ #	Immunisation Uptake (%)							
				BCG*	D ₃ T ₃	P ₃	Hib ₃	Polio ₃	HepB ₃	MenC ₂	PCV ₂
CHO1	Cavan/Monaghan	na	477	na	94	94	94	94	94	92	95
	Donegal	525	525	22	89	89	89	89	88	84	90
	Sligo/Leitrim	300	300	22	94	94	94	94	94	92	94
	CHO1 Total*	825	1302	22	92	92	92	92	92	89	93
CHO2	Galway	919	919	0.3	94	94	94	94	94	92	94
	Mayo	387	387	15	91	91	91	91	91	91	92
	Roscommon	204	204	1	97	97	97	97	97	95	97
	CHO2 Total	1510	1510	4	94	94	94	94	94	92	94
CHO3	Clare	354	352	9	95	95	95	95	95	91	95
	Limerick	363	469	11	91	91	91	91	91	86	91
	Tipperary NR/East Limerick	437	457	10	89	89	89	89	89	87	89
	CHO3 Total	1154	1278	10	92	92	92	92	92	88	91
CHO4	North Cork	349	341	22	91	91	91	91	91	86	86
	North South Lee	1374	1356	25	91	91	90	91	91	86	87
	West Cork	170	168	24	84	84	84	84	84	78	80
	Kerry	426	424	11	92	92	92	92	92	88	88
	CHO4 Total	2319	2289	22	90	90	90	90	90	86	87
CHO5	Carlow/Kilkenny	454	454	9	91	91	91	91	91	86	91
	South Tipperary	299	299	16	92	92	92	92	92	91	92
	Waterford	417	417	24	92	92	92	92	92	90	89
	Wexford	500	500	15	96	96	96	96	96	93	94
	CHO5 Total	1670	1670	16	93	93	93	93	93	90	92
CHO6	Dublin South	435	435	1	91	91	91	91	91	86	93
	Dublin South East	374	374	1	93	93	93	93	93	87	92
	Wicklow	422	422	6	88	88	88	88	88	80	88
	CHO6 Total	1231	1231	3	90	90	90	90	90	84	91
CHO7	Dublin South City	415	415	1	89	89	89	89	89	82	89
	Dublin South West	559	559	10	93	93	93	93	93	91	93
	Dublin West	613	613	1	92	92	92	92	92	90	92
	Kildare/West Wicklow	873	873	0.1	92	92	92	92	92	89	92
	CHO7 Total	2460	2460	3	92	92	92	92	92	88	92
CHO8	Laois/Offaly	549	549	0.0	94	94	94	94	94	94	94
	Longford/Westmeath	420	420	0.0	96	96	96	96	96	96	96
	Louth	na	476	na	89	89	89	89	89	87	89
	Meath	na	750	na	91	91	91	91	91	89	93
	CHO8 Total*	969	2195	0	92	92	92	92	92	91	93
CHO9	Dublin North West	853	853	7	89	89	89	89	89	85	89
	Dublin North Central	431	431	15	87	87	87	87	87	82	87
	Dublin North	967	967	1	86	86	86	86	86	81	85
	CHO9 Total	2251	2251	6	87	87	87	87	87	83	87
Ireland *		14389	16186	9	91	91	91	91	91	88	91

na=not available

*BCG data were unavailable for Cavan/Monaghan, Louth and Meath, therefore, the BCG CHO1, CHO8 and national data are incomplete.

#The denominator/number in cohort varied slightly according to vaccine. D₃T₃ cohort shown here.

Please note while North Lee and South Lee are two separate LHOs their combined immunisation uptake data are reported here.

Appendix 2

Immunisation uptake (%) at 24 months of age in cohort born 01/04/2014-30/06/2014													
Community Healthcare Organisation (CHO)	LHO/CHO	No. in cohort for D ₃ T ₃ *	Immunisation Uptake (%)										
			D ₃ T ₃	P ₃	Hib ₃	Hib _b	Polio ₃	HepB ₃	MenC ₃	MenC _b	PCV ₃	PCV _b	MMR ₁
CHO1	Cavan/Monaghan	459	96	96	96	92	96	96	94	92	94	94	93
	Donegal	502	94	94	94	90	94	92	82	88	86	91	91
	Sligo/Leitrim	330	97	97	97	96	97	97	87	96	89	95	96
	CHO1 Total	1291	96	96	95	92	96	95	88	91	90	93	93
CHO2	Galway	892	97	97	97	94	97	97	94	na	95	na	95
	Mayo	422	96	96	96	90	96	96	91	na	98	na	92
	Roscommon	238	97	97	97	97	97	97	96	na	97	na	97
	CHO2 Total	1552	97	97	97	93	97	97	93	na	96	na	94
CHO3	Clare	341	93	93	93	90	93	93	87	90	90	92	91
	Limerick	453	92	92	92	91	92	92	89	91	90	91	91
	Tipperary NR/East Limerick	425	95	95	95	88	95	95	86	88	93	94	94
	CHO3 Total	1219	94	94	94	89	94	94	87	90	91	92	92
CHO4	North Cork	333	96	96	96	94	96	96	92	92	93	92	95
	North South Lee	1384	95	95	94	89	95	95	86	88	91	93	92
	West Cork	166	90	90	90	87	90	90	80	84	83	84	82
	Kerry	433	96	96	95	93	96	96	90	93	93	95	95
	CHO4 Total	2316	95	95	94	91	95	95	87	89	91	92	92
CHO5	Carlow/Kilkenny	486	95	95	95	93	95	95	86	89	92	93	92
	South Tipperary	314	96	96	96	95	96	96	87	92	92	94	93
	Waterford	469	94	94	94	92	94	94	85	88	90	91	92
	Wexford	529	96	96	96	96	96	96	89	93	93	95	95
	CHO5 Total	1798	95	95	95	94	95	95	87	90	92	93	93
CHO6	Dublin South	399	94	94	94	90	94	94	88	90	91	92	92
	Dublin South East	381	94	94	94	91	94	94	89	91	90	91	91
	Wicklow	447	93	93	93	87	93	93	83	86	88	91	89
	CHO6 Total	1227	93	93	93	89	93	93	86	89	90	92	91
CHO7	Dublin South City	377	95	95	95	89	95	95	85	88	89	91	90
	Dublin South West	605	96	96	96	95	96	96	90	94	92	96	95
	Dublin West	610	97	97	97	90	97	97	87	90	93	95	95
	Kildare/West Wicklow	940	95	95	95	92	95	95	88	91	91	94	93
	CHO7 Total	2532	96	96	96	92	96	96	88	91	91	94	94
CHO8	Laois/Offaly	650	96	96	96	96	96	96	90	92	93	95	95
	Longford/Westmeath	496	97	97	97	97	97	97	91	95	97	94	96
	Louth	467	95	95	95	88	95	95	85	89	92	94	93
	Meath	776	96	96	96	90	96	96	86	89	91	92	92
	CHO8 Total	2389	96	96	96	93	96	96	88	91	93	94	94
CHO9	Dublin North West	884	94	94	94	86	94	94	82	85	89	91	90
	Dublin North Central	457	89	89	89	81	89	89	78	81	85	88	87
	Dublin North	1021	92	92	92	85	92	92	83	85	87	89	89
	CHO9 Total	2362	92	92	92	85	92	92	81	84	87	89	89
Ireland		16686	95	95	95	91	95	95	87	89	91	92	92

na=not available

*The denominator/number in cohort varied slightly according to vaccine. D₃T₃ cohorts show n here.

Please note while North Lee and South Lee are two separate LHOs their combined immunisation uptake data are reported here.

Appendix 3

Local Health Office (LHO) Abbreviations (used in maps in this report)	Local Health Office (LHO)
CE	Clare
CN/MN	Cavan/Monaghan
CW/KK	Carlow/Kilkenny
DL	Donegal
DN	Dublin North
DNC	Dublin North Central
DNW	Dublin North West
DS	Dublin South
DSC	Dublin South City
DSE	Dublin South East
DSW	Dublin South West
DW	Dublin West
G	Galway
KE/WW	Kildare/West Wicklow
KY	Kerry
L	Limerick
LD/WD	Longford/Westmeath
LH	Louth
LS/OY	Laois/Offaly
MH	Meath
MO	Mayo
NC	North Cork
NSL*	North South Lee*
RN	Roscommon
SO/LM	Sligo/Leitrim
TN/EL	Tipperary North /East Limerick
TS	South Tipperary
WC	West Cork
WD	Waterford
WX	Wexford
WW	Wicklow

*Please note while North Lee and South Lee are two separate LHOs their combined immunisation uptake data are reported here