

Background

The national immunisation uptake statistics, based on available data, for Quarter 1 2016 are presented in this report. These immunisation uptake statistics relate to children at 12 (born between 01/01/2015 and 31/03/2015) and 24 (born between 01/01/2014 and 31/03/2014) months of age in Quarter 1-2016. These children were recommended the vaccines outlined in table 1. Please note the immunisation schedule changed in 2015 for children born on or after July 1st 2015. Please see the HSE-National Immunisation Office (NIO) website at <http://www.immunisation.ie> for current and detailed information on the Irish primary childhood immunisation schedule and also recommended vaccinations for older children and adults.

For children at 12 months of age in Quarter 1 2016, immunisation uptake rates of three doses of vaccines against diphtheria (D₃), pertussis (P₃), tetanus (T₃), *Haemophilus influenzae* type b (Hib₃), polio (Polio₃), hepatitis B (HepB₃), two doses of meningococcal serogroup C conjugate vaccine (MenC₂), two doses of pneumococcal conjugate vaccine (PCV₂) and one dose of BCG vaccine are reported.

For children at 24 months of age in Quarter 1 2016, immunisation uptake rates of three doses of vaccines against diphtheria (D₃), pertussis (P₃), tetanus (T₃), *Haemophilus influenzae* type b (Hib₃), polio (Polio₃), hepatitis B (HepB₃), meningococcal group C (MenC₃) and pneumococcal conjugate vaccine (PCV₃) and one dose of vaccine against measles, mumps and rubella (MMR₁) are reported. One dose of vaccine against *Haemophilus influenzae* type b (Hib_b), one dose of meningococcal group C vaccine (MenC_b) and one dose of pneumococcal conjugate vaccine (PCV_b) given on or after 12 months of age are also reported.

The uptake statistics are also presented in this report by Community Healthcare Organisation (CHO) and Local Health Office (LHO). While there are 32 LHOs the immunisation uptake data for North Lee and South Lee are reported as a combined figure. The uptake rates presented here were rounded to zero decimal place.

Table 1. Primary childhood immunisation schedule for children born between 01/07/2008 and 30/06/2015

Age	Vaccines
Birth	BCG
2 months	DTaP/Hib/IPV/HepB (6 in 1) + PCV
4 months	DTaP/Hib/IPV/HepB (6 in 1) + MenC
6 months	DTaP/Hib/IPV/HepB (6 in 1) + PCV + MenC
12 months	MMR + PCV
13 months	MenC + Hib

Please note the primary immunisation schedule changed in 2015 for children born on or after 01/07/2015. Please see the HSE-National Immunisation Office (NIO) website at <http://www.immunisation.ie> for current and detailed information on the Irish primary childhood immunisation schedule and also recommended vaccinations for older children and adults

BCG	Bacille Calmette Guerin vaccine
DTaP	Diphtheria, Tetanus and acellular Pertussis vaccine
HepB	Hepatitis B vaccine
Hib	<i>Haemophilus influenzae</i> type b vaccine
IPV	Inactivated Polio Virus vaccine
MenC	Meningococcal group C vaccine
MMR	Measles, Mumps and Rubella vaccine
PCV	Pneumococcal Conjugate Vaccine

Immunisation uptake among children at 12 months of age in Quarter 1-2016

National

- Immunisation uptake rates in children 12 months of age in Q1-2016 are presented by Community Healthcare Organisation (CHO) in table 2. National immunisation uptake rates were 92% for D₃, T₃, P₃, Hib₃, Polio and HepB₃, 91% for PCV₂ and 90% for MenC₂. BCG uptake data were available for 28 LHOs in Q1-2016; these areas cover approximately 90% of the national birth cohort. Where data were available, national uptake was 72% for the BCG vaccination.
- Figure 1 presents the national uptake rates at 12 months for each vaccine from Q3-2000 to Q1-2016. Compared to Q4-2015, national uptake rates in Q1-2016 for D₃, T₃, P₃, Hib₃, Polio and HepB₃ increased by 1%, MenC₂ and PCV₂ were unchanged and BCG decreased by 12% (figure 1). The BCG vaccine stock in Ireland expired at the end of April 2015, please see <http://www.hse.ie/eng/health/immunisation/pubinfo/babychildimm/vaccprevdisease/tb/> for further information.

Community Healthcare Organisation (CHO)

- Among the CHOs, the uptake rates for D₃, T₃, P₃, Hib₃, Polio₃ and HepB₃ ranged from 89 to 94%, PCV₂ ranged from 87% to 95% and MenC₂ ranged from 86% to 94%.

Local Health Office (LHO)

- The immunisation uptake rates by LHO are shown in appendix 1.
- D₃, MenC₂ and PCV₂ immunisation uptake rates are mapped by LHO in figures 2-4.
- The target uptake rate of ≥95% was reached in 6 LHOs for PCV₂, 5 LHOs for D₃, T₃, P₃, Hib₃, Polio₃ and HepB₃, in 3 LHOs for MenC₂ and in one LHO for BCG.

Table 2. Immunisation uptake (%) at 12 months in cohort born 01/01/2015–31/03/2015

Community Healthcare Organisation/LHO*	No. in cohort [#]	BCG	D ₃ T ₃	P ₃	Hib ₃	Polio ₃	HepB ₃	MenC ₂	PCV ₂
CHO1 (CN/MN, DL, SO/LM)	1263	92†	94	94	94	94	94	93	94
CHO2 (G, MO, RN)	1399	28	94	94	94	94	94	94	94
CHO3 (CE, L, TN)	1379	90	90	90	90	90	90	89	90
CHO4 (NC, NSL, WC, KY)	2318	84	90	90	90	90	90	86	87
CHO5 (CW/KK, TS, WD, WX)	1617	88	92	92	92	92	92	91	91
CHO6 (DS, DSE, WW)	1218	68	91	91	91	91	91	89	90
CHO7 (DSC, DSW, DW, KE)	2509	66	93	93	93	93	93	91	93
CHO8 (LS/OY, LD/WH, LH, MH)	2211	89†	94	94	94	94	94	94	95
CHO9 (DNW, DNC, DN)	2247	61	89	89	89	89	89	87	88
Ireland	16161†	72†	92	92	92	92	92	90	91

na = not available at this time

*Shown in brackets are the LHOs in each CHO. Please see Appendix 3 to translate LHO codes. The geographical boundaries of the CHOs are shown at http://www.hse.ie/eng/services/publications/corporate/CHO_Chapter_1.pdf

[#] The denominator/number in cohort varied slightly according to vaccine. D₃T₃ cohorts are shown here.

†Number in cohort for BCG is 14,484. BCG data are unavailable for the former HSE North Eastern Area i.e. CN/MN, LH, MH; therefore CHO1 and CHO8 BCG data are incomplete.

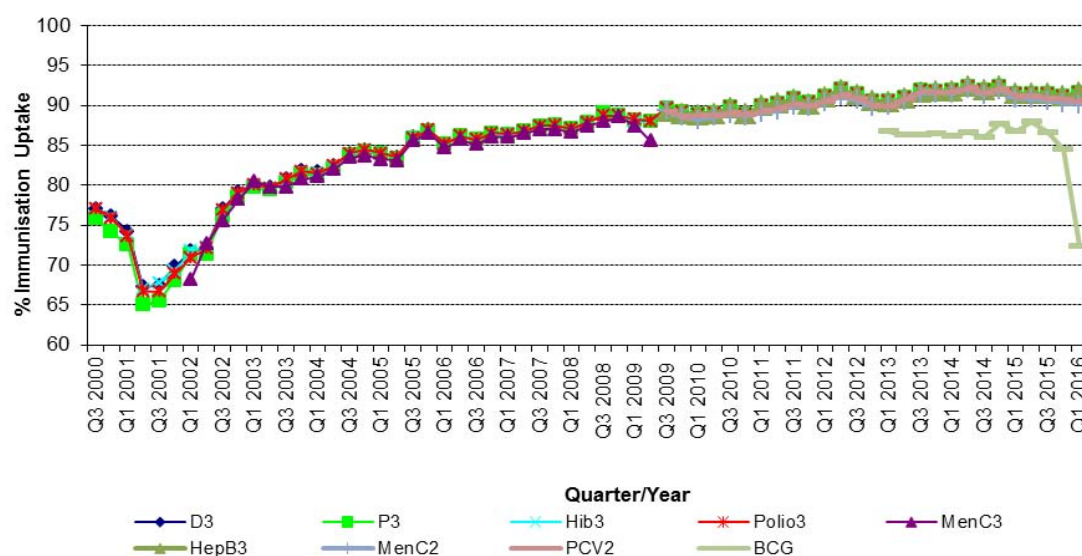


Figure 1. National quarterly immunisation uptake rates at 12 months

Since T₃ uptake is identical to D₃ uptake only D₃ uptake figures presented. The Q3-2008 MenC₃ uptake figure is based on data from six of the eight HSE Areas. The Q1-2009 HSE-Eastern Area D₃, P₃, T₃, Polio₃ and MMR₁ uptake figures exclude those born on the 31/03/2007. The Q3-2009 figures are incomplete as two HSE Areas were unable to provide data, two additional areas were unable to provide MenC₂ data and one additional area was unable to provide PCV₂ data. The Q4-2009 figures are incomplete as three HSE Areas were unable to provide data. The Q1-2010 figures are incomplete as two HSE Areas were unable to provide data and three were unable to provide MenC₂ data. The Q2-2010 figures are incomplete as two HSE Areas were unable to provide data. The Q4-2010 figures are incomplete as one HSE Area was unable to provide data. BCG uptake data are only displayed in this graph from Q1 2013 as BCG uptake data were available for only five of the eight HSE-Areas (this includes data from the HSE-Southern Area which relates to Kerry data only) from Q3 2003 to Q2 2009 (except Q3 2004 when HSE-Southern Area data were not available), for three HSE-Areas in Q3 2009, for two HSE-Areas in Q4 2009, for three HSE-Areas in Q1 2010 and Q2 2010, for five HSE-Areas in Q4 2010, Q1 2011 and Q2 2011, for six HSE-Areas in Q3 2011 to Q4 2012 and for seven HSE Areas from Q1 2013. From Q3 2011 to Q3 2014 HSE Western Area BCG data was not available by LHO, uptake was provided for the HSE Western Area as a whole. In Q4 2014 BCG data was available for Galway and Roscommon- the BCG denominator for HSE Western Area in Q4 2014 was the sum of the Galway and Roscommon denominators. Since Q1 2015 BCG data was available for Galway, Mayo and Roscommon LHOs. The BCG vaccine stock in Ireland expired at the end of April 2015, please see <http://www.hse.ie/eng/health/immunisation/pubinfo/babychildimm/vaccprevdisease/tb/> for further information.

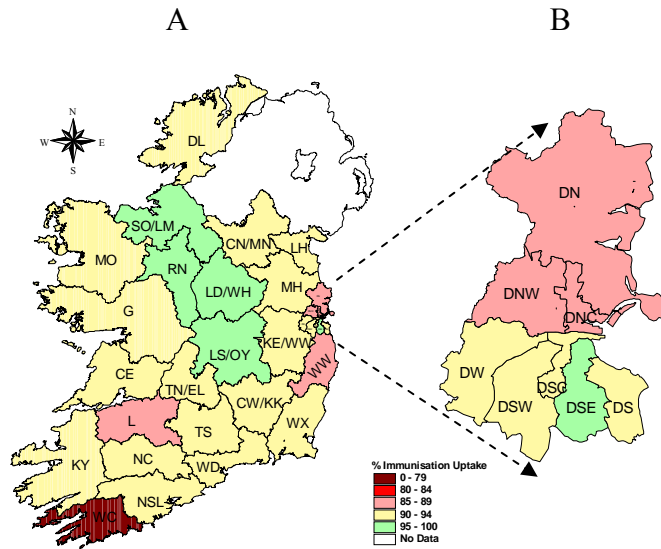


Figure 2. D₃ immunisation uptake rates (%) by LHO, in those 12 months of age in Quarter 1-2016, in (A) Ireland and (B) Dublin. Please see Appendix 3 to translate LHO codes.

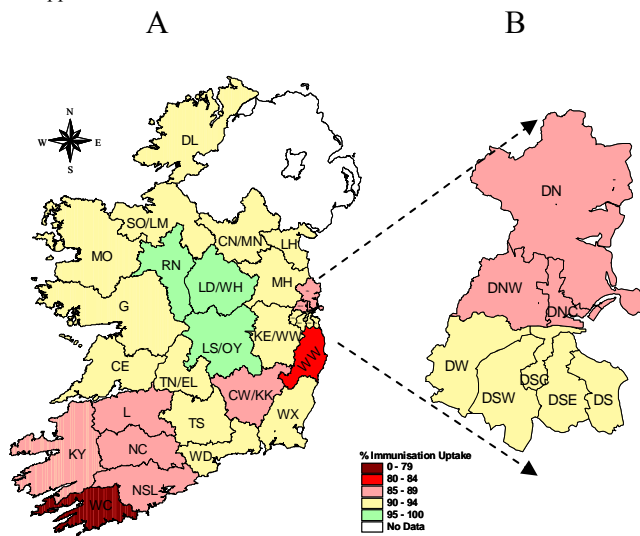


Figure 3. MenC₂ immunisation uptake rates (%) by LHO, in those 12 months of age in Quarter 1-2016, in (A) Ireland and (B) Dublin. Please see Appendix 3 to translate LHO codes.

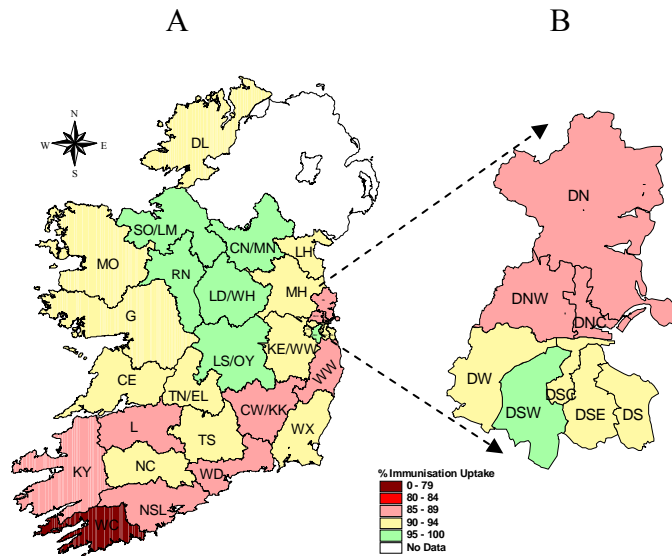


Figure 4. PCV₂ immunisation uptake rates (%) by LHO, in those 12 months of age in Quarter 1-2016, in (A) Ireland and (B) Dublin. Please see Appendix 3 to translate LHO codes.

Immunisation uptake among children 24 months of age in Quarter 1-2016

National

- National uptake rates were 95% for D₃, T₃, P₃, Hib₃, Polio₃ and HepB₃, 93% for MMR₁, 91% for Hib_b and PCV₃ and 87% for MenC₃ (table 3). Compared to the previous quarter, national uptake rates in Q1-2016 decreased by 2% for MenC₃ and PCV₃ decreased by 1% for D₃, T₃, P₃, Hib₃, Polio₃, HepB₃ and Hib_b and were unchanged for MMR₁ (figure 5).
- In total, eight of the nine CHOs were able to provide uptake data on MenC_b and PCV_b in Q1-2016. These Areas cover approximately 91% of the national birth cohort. Where data were available, national uptake was 89% for MenC_b and 93% for PCV_b. Compared to the previous quarter MenC_b uptake decreased by 2% and PCV_b uptake was unchanged (figure 5).
- Figure 5 presents the national uptake rates at 24 months for each vaccine from Q1-1999 to Q1-2016.

Community Healthcare Organisations (CHOs)

- The target uptake of ≥95% was reached for D₃, P₃, T₃, Hib₃, Polio₃ and HepB₃ in seven CHOs, for Hib_b in two, for MenC₃, PCV₃ and MMR₁ in one and in none for MenC_b and PCV_b (table 3).

Local Health Office (LHO)

- Immunisation uptake rates in children 24 months of age in Q1-2016 are presented by LHO in Appendix 2.
- D₃, Hib_b, MenC₃, MenC_b, PCV₃, PCV_b and MMR₁ immunisation uptake rates are mapped by LHO in figures 6-12.
- The target uptake of ≥95% was reached in 20 LHOs for D₃, T₃, P₃, Hib₃ and Polio₃, 19 for HepB₃, 9 for Hib_b, 8 for MMR₁, 7 for PCV_b, 5 for PCV₃, 3 for MenC_b and 2 for MenC₃.

Table 3. Immunisation uptake (%) at 24 months in cohort born 01/01/2014–31/03/2014

Community Healthcare Organisation/LHO	No. in Cohort*	D ₃ /T ₃ /P ₃ /Hib ₃	Hib _b	Polio ₃	HepB ₃	MenC ₃	MenC _b	PCV ₃	PCV _b	MMR ₁
CHO1 (CN/MN, DL, SO/LM)	1268	97	92	97	96	87	90	90	94	93
CHO2 (G, MO, RN)	1496	97	95	97	97	95	na	97	na	95
CHO3 (CE, L, TN)	1275	96	92	96	96	88	91	92	94	93
CHO4 (NC, NSL, WC, KY)	2232	96	91	96	96	88	90	92	93	94
CHO5 (CW/KK, TS, WD, WX)	1669	95	95	95	95	87	92	92	94	93
CHO6 (DS, DSE, WW)	1270	94	88	94	94	85	88	92	94	93
CHO7 (DSC, DSW, DW, KE)	2568	95	89	95	95	86	89	90	92	92
CHO8 (LS/OY, LD/WH, LH, MH)	2257	96	93	96	96	87	90	91	93	94
CHO9 (DNW, DNC, DN)	2352	92	86	92	92	84	86	88	90	89
Ireland	16387	95	91	95	95	87	89	91	93	93

Please see Appendix 3 to translate LHO codes

* As the denominator/number in cohort varied slightly according to vaccine D₃/T₃ cohorts are shown here

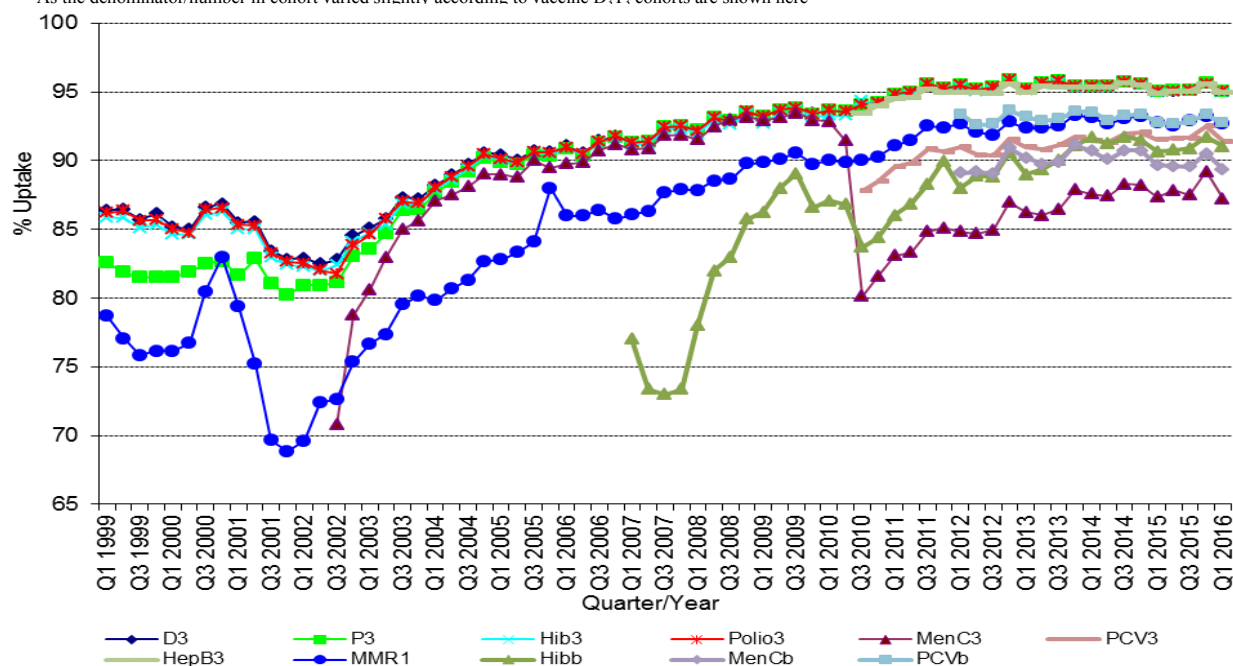


Figure 5. National quarterly immunisation uptake rates at 24 months

Notes: The Q4-2005 MMR₁ figure is based on data from seven of the eight HSE-Areas. The Q1-2006 MMR₁ figure includes the HSE-Eastern Area figure that is an estimate only. The Q1-2007, Q3-2007, Q2-2008 and Q3-2008 Hib_b figures are based on data from seven of the eight HSE Areas. In Q1-2008 the uptake of Hib_b in the HSE-SE was 83% compared to 53% in Q4-2007. The Q3-2008 MenC₃ figure is based on data from six of the eight HSE Areas. The Q1-2009 HSE-Eastern Area D₃, P₃, T₃, Polio, and MMR₁ uptake figures exclude those born on the 31/03/2007. The Q2-2009 HSE-Eastern Area Hib_b uptake figures exclude uptake figures from Dublin North. The Q4-2009 figures are based on data from seven of the eight HSE Areas. The Q4-2009 Hib_b figures also exclude uptake figures from Dublin North. The Q1-2010 figures are based on data from six of the eight HSE Areas. The Q1-2010 Hib_b figures also exclude uptake figures from Dublin North. The Q2-2010 and Q4-2010 figures are based on data from seven of the eight HSE Areas. MenC_b and PCV_b data are only available for 6 of the 8 HSE Areas from Q1 2012 to Q4 2014 and for 7 HSE Areas since Q1 2015

Conclusions

In Quarter 1-2016, national uptake rates at 24 months for D₃, T₃, P₃, Hib₃, Polio₃ and HepB₃ reached the target of $\geq 95\%$. Compared to the previous quarter, national uptake rates in Q1-2016 decreased by 2% for MenC₃ and PCV₃, decreased by 1% for D₃, T₃, P₃, Hib₃, Polio₃, HepB₃ and Hib₆ and were unchanged for MMR₁. MenC₆ and to a lesser extent Hib₆ uptake are lower than the uptake of the other recommended vaccines both of which should be given at 13 months of age suggesting that parents are less likely to get the necessary vaccines for their children at this age.

Acknowledgements

HPSC would like to thank all those involved in childhood immunisation including the General Practitioners, Practice Nurses, HSE Areas, Public Health Nurses, Immunisation Co-ordinators, Specialists in Public Health Medicine, Surveillance Scientists and Systems Analysts for their assistance.

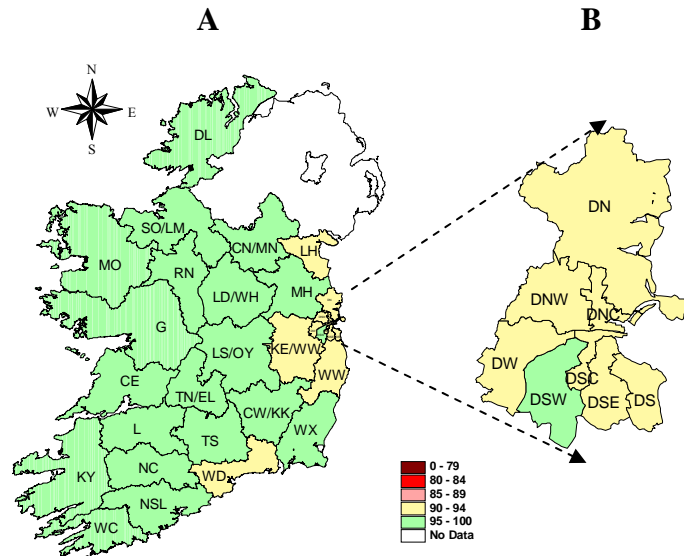


Figure 6. D₃ immunisation uptake rates (%) by LHO, in those 24 months of age in Quarter 1-2016, in (A) Ireland and (B) Dublin. Please see Appendix 3 to translate LHO codes.

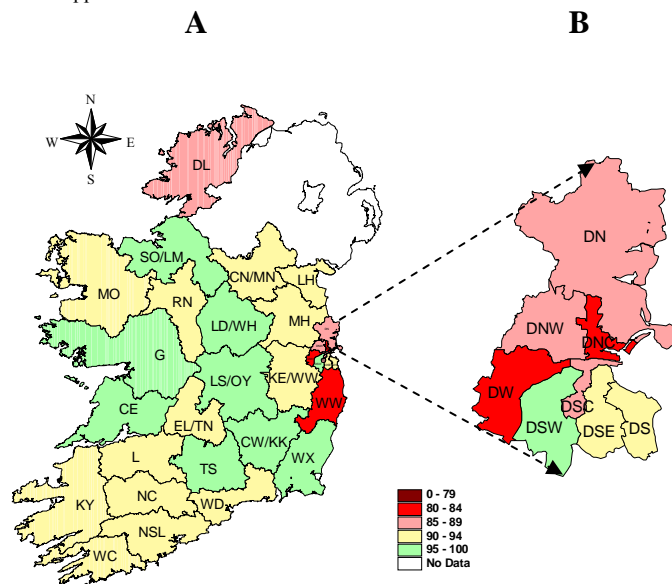


Figure 7. Hib₆ immunisation uptake rates (%) by LHO, in those 24 months of age in Quarter 1-2016, in (A) Ireland and (B) Dublin. Please see Appendix 3 to translate LHO codes.

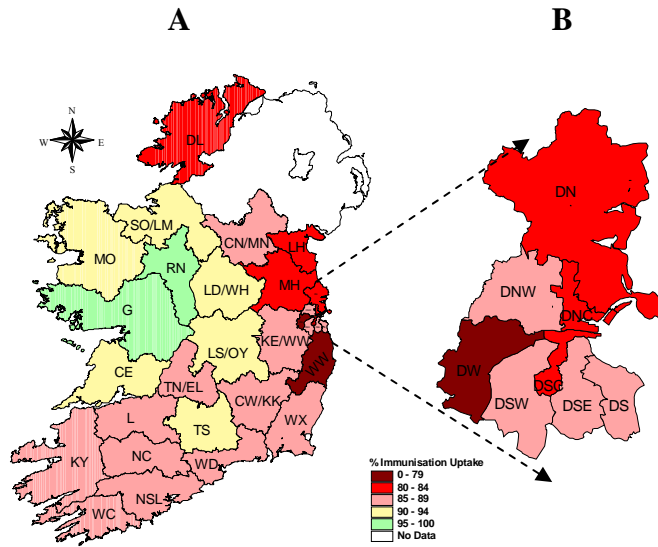


Figure 8. MenC₃ immunisation uptake rates (%) by LHO, in those 24 months of age in Quarter 1-2016, in (A) Ireland and (B) Dublin. Please see Appendix 3 to translate LHO codes.

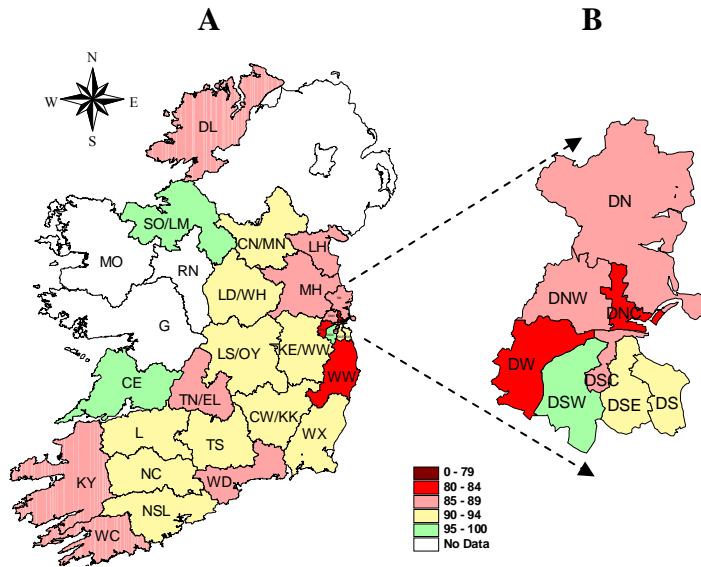


Figure 9. MenC_b immunisation uptake rates (%) by LHO, in those 24 months of age in Quarter 1-2016, in (A) Ireland and (B) Dublin. Please see Appendix 3 to translate LHO codes.

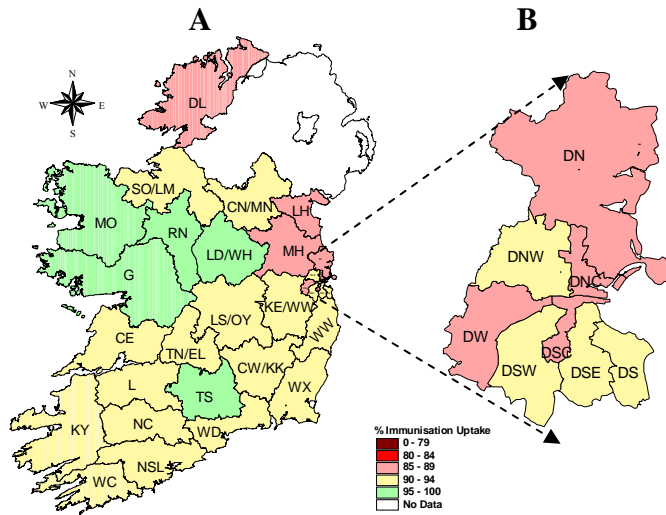


Figure 10. PCV₃ immunisation uptake rates (%) by LHO, in those 24 months of age in Quarter 1-2016, in (A) Ireland and (B) Dublin. Please see Appendix 3 to translate LHO codes.

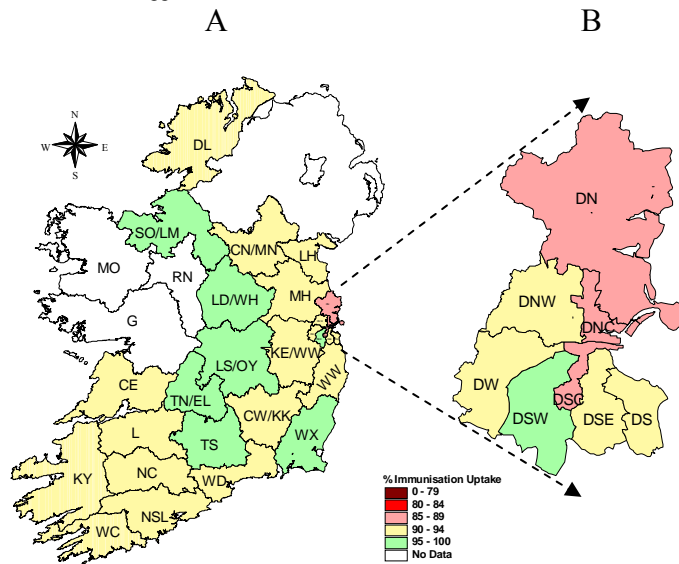


Figure 11. PCV₆ immunisation uptake rates (%) by LHO, in those 24 months of age in Quarter 1-2016, in (A) Ireland and (B) Dublin. Please see Appendix 3 to translate LHO codes.

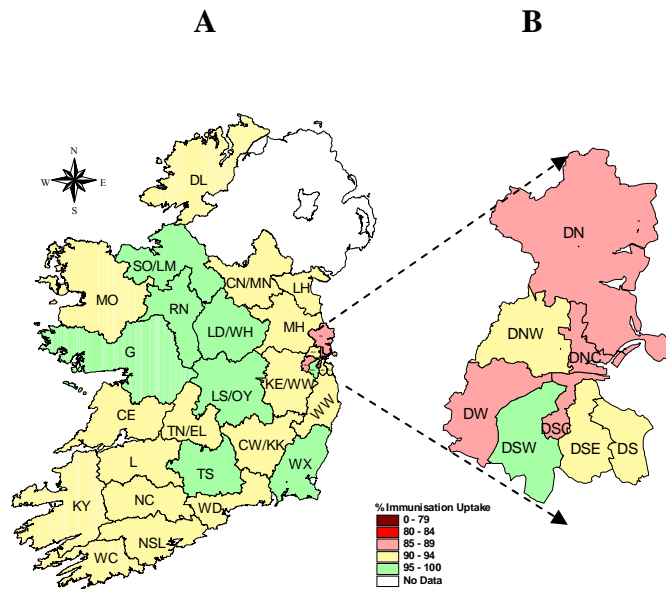


Figure 12. MMR₁ immunisation uptake rates (%) by LHO, in those 24 months of age in Quarter 1-2016, in (A) Ireland and (B) Dublin. Please see Appendix 3 to translate LHO codes.

Appendix 1

Immunisation uptake (%) at 12 months of age in cohort born 01/01/2015-31/03/2015											
Community Healthcare Organisation (CHO)	LHO/CHO	No. in cohort for BCG*	No. in cohort for D ₃ T ₃ #	Immunisation Uptake (%)							
				BCG*	D ₃ T ₃	P ₃	Hib ₃	Polio ₃	HepB ₃	MenC ₂	PCV ₂
CHO1	Cavan/Monaghan	na	414	na	93	93	93	93	93	94	95
	Donegal	510	510	91	93	93	93	93	92	91	93
	Sligo/Leitrim	339	339	93	96	96	96	96	96	94	96
	CHO1 Total*	849	1263	92	94	94	94	94	94	93	94
CHO2	Galway	840	840	6	94	94	94	94	94	93	94
	Mayo	357	357	87	94	94	94	94	94	94	94
	Roscommon	202	202	12	97	97	97	97	97	96	97
	CHO2 Total	1399	1399	28	94	94	94	94	94	94	94
CHO3	Clare	396	407	90	91	91	91	91	91	90	91
	Limerick	393	465	91	89	89	89	89	89	87	89
	Tipperary NR/East Limerick	481	507	90	90	90	90	90	90	90	90
	CHO3 Total	1270	1379	90	90	90	90	90	90	89	90
CHO4	North Cork	352	350	88	92	92	92	92	92	89	90
	North South Lee	1362	1346	84	91	91	91	91	91	87	88
	West Cork	190	190	78	79	79	79	79	79	76	78
	Kerry	435	432	83	90	90	90	90	90	85	85
CHO4 Total	2339	2318	84	90	90	90	90	90	86	87	
CHO5	Carlow/Kilkenny	464	464	83	90	90	90	90	90	88	89
	South Tipperary	291	291	93	93	93	93	93	93	93	93
	Waterford	414	414	89	92	92	92	92	92	91	89
	Wexford	448	448	90	94	94	94	94	94	93	94
CHO5 Total	1617	1617	88	92	92	92	92	92	92	91	
CHO6	Dublin South	428	428	71	92	92	92	92	92	90	92
	Dublin South East	371	371	67	95	95	95	95	95	93	94
	Wicklow	419	419	67	86	86	86	86	86	84	86
	CHO6 Total	1218	1218	68	91	91	91	91	91	89	90
CHO7	Dublin South City	397	397	73	91	91	91	91	91	90	91
	Dublin South West	590	590	90	94	94	94	94	94	94	95
	Dublin West	601	601	26	91	91	91	91	91	90	91
	Kildare/West Wicklow	921	921	74	93	93	93	93	93	93	93
CHO7 Total	2509	2509	66	93	93	93	93	93	93	91	
CHO8	Laois/Offaly	587	587	95	95	95	95	95	95	95	95
	Longford/Westmeath	449	449	80	98	98	98	98	98	98	98
	Louth	na	454	na	93	93	93	93	93	92	94
	Meath	na	721	na	90	90	90	90	90	91	92
CHO8 Total*	1036	2211	89	94	94	94	94	94	94	95	
CHO9	Dublin North West	840	840	83	89	89	89	89	89	86	89
	Dublin North Central	461	461	83	89	89	89	89	89	86	88
	Dublin North	946	946	32	89	89	89	89	89	87	88
	CHO9 Total	2247	2247	61	89	89	89	89	89	87	88
Ireland *	14484	16161	72	92	92	92	92	92	92	90	

na=not available

*BCG data were unavailable for Cavan/Monaghan, Louth and Meath, therefore, the BCG CHO1, CHO8 and national data are incomplete.

#The denominator/number in cohort varied slightly according to vaccine. D₃T₃ cohort shown here.

Please note while North Lee and South Lee are two separate LHOs their combined immunisation uptake data are reported here.

Appendix 2

Immunisation uptake (%) at 24 months of age in cohort born 01/01/2014-31/03/2014													
Community Healthcare Organisation (CHO)	LHO/CHO	No. in cohort for D ₃ T ₃ *	Immunisation Uptake (%)										
			D ₃ T ₃	P ₃	Hib ₃	Hib _b	Polio ₃	HepB ₃	MenC ₃	MenC _b	PCV ₃	PCV _b	MMR ₁
CHO1	Cavan/Monaghan	454	97	97	97	93	97	97	89	91	91	93	94
	Donegal	503	96	96	96	89	96	94	84	89	88	92	90
	Sligo/Leitrim	311	98	98	98	96	98	98	90	96	93	97	96
	CHO1 Total	1268	97	97	97	92	97	96	87	90	90	94	93
CHO2	Galway	911	97	97	97	96	97	97	95	na	97	na	96
	Mayo	380	97	97	97	93	97	97	93	na	98	na	94
	Roscommon	205	97	97	97	94	97	97	95	na	97	na	95
	CHO2 Total	1496	97	97	97	95	97	97	95	na	97	na	95
CHO3	Clare	372	98	98	98	95	98	98	91	95	92	94	94
	Limerick	495	95	95	95	91	95	95	87	90	91	93	92
	Tipperary NR/East Limeri	408	95	95	95	90	95	95	87	89	93	95	93
	CHO3 Total	1275	96	96	96	92	96	96	88	91	92	94	93
CHO4	North Cork	312	96	96	96	90	96	96	87	90	92	92	94
	North South Lee	1336	96	96	95	91	96	96	89	90	93	94	94
	West Cork	164	96	96	96	90	96	96	85	88	90	91	93
	Kerry	420	96	96	96	92	96	96	89	88	92	93	93
	CHO4 Total	2232	96	96	96	91	96	96	88	90	92	93	94
CHO5	Carlow/Kilkenny	450	96	96	96	96	96	96	85	91	91	94	92
	South Tipperary	272	97	97	97	98	97	97	91	94	95	96	96
	Waterford	425	91	91	91	91	91	91	86	88	90	91	90
	Wexford	522	97	97	97	96	97	97	89	94	93	96	95
	CHO5 Total	1669	95	95	95	95	95	95	87	92	92	94	93
CHO6	Dublin South	416	94	94	94	91	94	94	89	92	93	94	94
	Dublin South East	427	93	93	93	91	93	93	89	91	93	94	94
	Wicklow	427	94	94	94	83	94	94	78	81	90	93	91
	CHO6 Total	1270	94	94	94	88	94	94	85	88	92	94	93
CHO7	Dublin South City	395	94	94	94	86	94	94	83	85	87	89	88
	Dublin South West	619	98	98	98	95	98	98	89	95	93	96	97
	Dublin West	627	94	94	94	82	94	94	79	82	88	90	88
	Kildare/West Wicklow	927	94	94	94	91	94	94	89	91	91	93	93
	CHO7 Total	2568	95	95	95	89	95	95	86	89	90	92	92
CHO8	Laos/Offaly	590	98	98	98	98	98	98	90	93	93	96	96
	Longford/Westmeath	463	96	96	96	96	96	96	92	94	95	95	96
	Louth	429	94	94	94	90	94	94	83	87	87	90	90
	Meath	775	95	95	95	90	95	95	84	87	89	91	93
	CHO8 Total	2257	96	96	96	93	96	96	87	90	91	93	94
CHO9	Dublin North West	848	94	94	94	88	94	94	85	88	90	92	91
	Dublin North Central	463	91	91	91	83	91	91	81	83	87	89	88
	Dublin North	1041	91	91	91	85	91	91	83	85	88	89	89
	CHO9 Total	2352	92	92	92	86	92	92	84	86	88	90	89
Ireland	16387	95	95	95	91	95	95	87	89	91	93	93	

na=not available

*The denominator/number in cohort varied slightly according to vaccine. D₃T₃ cohorts show n here.

Please note while North Lee and South Lee are two separate LHOs their combined immunisation uptake data are reported here.

Appendix 3

Local Health Office (LHO) Abbreviations (used in maps in this report)	Local Health Office (LHO)
CE	Clare
CN/MN	Cavan/Monaghan
CW/KK	Carlow/Kilkenny
DL	Donegal
DN	Dublin North
DNC	Dublin North Central
DNW	Dublin North West
DS	Dublin South
DSC	Dublin South City
DSE	Dublin South East
DSW	Dublin South West
DW	Dublin West
G	Galway
KE/WW	Kildare/West Wicklow
KY	Kerry
L	Limerick
LD/WD	Longford/Westmeath
LH	Louth
LS/OY	Laois/Offaly
MH	Meath
MO	Mayo
NC	North Cork
NSL*	North South Lee*
RN	Roscommon
SO/LM	Sligo/Leitrim
TN/EL	Tipperary North /East Limerick
TS	South Tipperary
WC	West Cork
WD	Waterford
WX	Wexford
WW	Wicklow

*Please note while North Lee and South Lee are two separate LHOs their combined immunisation uptake data are reported here