

Summary

Children 12 months of age in Quarter 3-2012

- National immunisation uptake rates were 91% for D₃, P₃, T₃, Hib₃, Polio₃, HepB₃, MenC₂ and PCV₂. Compared to Q2-2012, national uptake rates in Q3-2012 for D₃, P₃, T₃, Hib₃, Polio₃ and HepB₃ decreased by 1% while MenC₂ and PCV₂ were unchanged.
- Among the HSE Areas, the uptake rates for D₃, P₃, T₃, Hib₃, Polio₃ and HepB₃ ranged from 90% to 94% and MenC₂ and PCV₂ ranged from 89% to 94%.
- Among the Local Health Offices, the target uptake rate of ≥95% was reached in Tipperary NE/East Limerick, Tipperary South and Roscommon for D₃, P₃, T₃, Hib₃, Polio₃, HepB₃, MenC₂ and PCV₂.

Children 24 months of age in Quarter 3-2012

- National uptake rates were 95% for D₃, P₃, T₃, Hib₃, Polio₃ and HepB₃, 92% for MMR₁, 90% for PCV₃, 89% for Hib_b and 85% for MenC₃. Six of the eight HSE Areas were able to provide uptake data on MenC_b (one dose of MenC at ≥12 months of age) and PCV_b (one dose of PCV at ≥12 months of age) in Quarter 3 2012. These Areas cover approximately 83% of the national birth cohort. Where data were available, national uptake was 89% for MenC_b and 93% for PCV_b.

Compared to the previous quarter, national uptake rates in Quarter 3 2012 were unchanged.

- The target uptake of ≥95% was reached for D₃, P₃, T₃, Hib₃ and Polio₃ in seven of the eight HSE Areas, for HepB₃ in six HSE Areas, for PCV_b in two HSE Areas and for MMR₁ and Hib_b in one HSE Area. The target uptake of ≥95% was not reached in any HSE Area for MenC₃, MenC_b or PCV₃.
- The target uptake of ≥95% was reached in 22 LHOs for D₃, P₃, T₃, Hib₃ and Polio₃, 20 LHOs for HepB₃, 6 for Hib_b, 5 for PCV_b and MMR₁, 2 for MenC_b and PCV₃ and in none for MenC₃.

Introduction

Since September 1st 2008, the childhood immunisation schedule outlined in table 1 has been implemented for children born on or after 1st July 2008.

Compared to the previous schedule (table 1), the changes to the primary schedule for children born on or after 1st July 2008 include;
 Introduction of a hepatitis B vaccine (as part of a 6 in 1 vaccine) given at 2, 4 and 6 months of age
 Introduction of pneumococcal conjugate vaccine given at 2, 6 and 12 months of age
 Change in timing of meningococcal serogroup C conjugate vaccination, now given at 4, 6 and 13 months of age
 Change in timing of the *Haemophilus influenzae* type b booster vaccination, now given at 13 months of age.

Please see www.immunisation.ie for complete information on the Irish childhood immunisation schedule.

The immunisation uptake statistics presented in this report relate to children 12 and 24 months of age in Quarter 3-2012.

The immunisation uptake rates presented in this report for children at 12 months of age in Quarter 3-2012 are children born between 01/07/2011 and 30/09/2011 and who have received three doses of vaccines against diphtheria (D₃), pertussis (P₃), tetanus (T₃), *Haemophilus influenzae* type b (Hib₃), polio (Polio₃), hepatitis B (HepB₃), two doses of meningococcal serogroup C conjugate vaccine (MenC₂), two doses of pneumococcal conjugate vaccine (PCV₂) and one dose of BCG vaccine.

The immunisation uptake rates presented in this report for children at 24 months of age in Quarter 3-2012 are children born between 01/07/2010 and 30/09/2010 and who have received three doses of vaccines against diphtheria (D₃), pertussis (P₃), tetanus (T₃), *Haemophilus influenzae* type b (Hib₃), polio (Polio₃), hepatitis B (HepB₃), meningococcal group C (MenC₃) and pneumococcal conjugate vaccine (PCV₃), one booster dose of vaccine against *Haemophilus influenzae* type b on or after 12 months of age (Hib_b), one dose of vaccine against meningococcal group C (MenC_b) on or after twelve months of age, one dose of vaccine against pneumococcal conjugate vaccine (PCV_b) on or after twelve months of age and one dose of vaccine against measles, mumps and rubella (MMR₁). The Quarter 3-2012 cohort of children at 24 months was therefore the ninth cohort recommended the new immunisation schedule. (Children that were 24 months of age in Quarter 3-2010 were children born between July 1st and September 30th 2008 and were therefore the first cohort recommended the new immunisation schedule.)

The national immunisation uptake statistics, based on available data, for Quarter 3-2012 are presented in this document, the uptake statistics are also presented by HSE Area and Local Health Office (LHO).

The uptake rates presented here were rounded to zero decimal place.

While there are 32 LHOs the immunisation uptake data for North Lee and South Lee are combined in this report.

Table 1. Change in Primary Childhood Immunisation Schedule (introduced on September 1st 2008)

| Age | Children born before 01/07/2008 | Children born on or after 01/07/2008 |
|-----------|---------------------------------|--------------------------------------|
| Birth | BCG | BCG |
| 2 months | DTaP/Hib/IPV + MenC | DTaP/Hib/IPV/HepB + PCV |
| 4 months | DTaP/Hib/IPV + MenC | DTaP/Hib/IPV/HepB + MenC |
| 6 months | DTaP/Hib/IPV + MenC | DTaP/Hib/IPV/HepB + PCV + MenC |
| 12 months | MMR + Hib | MMR + PCV |
| 13 months | - | MenC + Hib |

Please see www.immunisation.ie for complete information on the Irish childhood immunisation schedule and the immunisation guidelines for Ireland.

| | |
|------|-----------------------------------------------------|
| BCG | Bacille Calmette Guerin vaccine |
| DTaP | Diphtheria, Tetanus and acellular Pertussis vaccine |
| Hib | <i>Haemophilus influenzae</i> type b vaccine |
| HepB | Hepatitis B vaccine |
| IPV | Inactivate Polio Virus vaccine |
| MMR | Measles, Mumps and Rubella vaccine |
| MenC | Meningococcal group C vaccine |
| PCV | Pneumococcal Conjugate Vaccine |

Immunisation uptake at 12 months

National and HSE Area uptake

Immunisation uptake rates in children 12 months of age in Q3-2012 are presented by HSE Area in table 2. National uptake rates were 91% for D₃, P₃, T₃, Hib₃, Polio₃, HepB₃, PCV₂ and MenC₂. Among the HSE Areas, the uptake rates for D₃, P₃, T₃, Hib₃, Polio₃ and HepB₃ ranged from 90% to 94% and MenC₂ and PCV₂ ranged from 89% to 94%. Seven HSE Areas had ≥90% uptake of these vaccines.

BCG uptake data were available for six of the eight HSE Areas in Q3-2012; these areas cover approximately 52% of the national birth cohort. Where data were available, national uptake was 80% for the BCG vaccination. This is unchanged compared to the previous quarter.

National & HSE Area trends

Figure 1 presents the national uptake rates at 12 months for each vaccine from Q3-2000 to Q3-2012. Compared to Q2-2012, national uptake rates in Q3-2012 for D₃, P₃, T₃, Hib₃, Polio₃ and HepB₃ decreased by 1% while MenC₂ and PCV₂ were unchanged.

In Q3-2012, compared to the previous quarter, uptake rates in the: HSE-Eastern Area decreased by 1% for all vaccines; HSE-Midland Area decreased by 4% for all vaccines except BCG which decreased by 1%; HSE-Mid Western Area decreased by 1% for all vaccines except BCG which increased by 2%; HSE-North-Eastern Area increased by 1% for all vaccines; HSE-North-Western Area decreased by 3% except for BCG which decreased by 1%; HSE-South Eastern Area increased by 1-2% except for BCG which decreased by 1%; HSE-Southern Area were unchanged for most vaccines except BCG, MenC₂ and PCV₂ which increased by 1%; HSE-Western were unchanged except BCG and HepB₃ which declined by 1%.

LHO uptake

The immunisation uptake rates by LHO are shown in appendix 1. D₃, MenC₂ and PCV₂ immunisation uptake rates are mapped by LHO in figures 2-4.

Among the 15 LHOs reporting BCG data, BCG uptake ranged from 94% to 99% with 12 reporting uptake of ≥95%.

D₃, P₃, T₃, Hib₃, Polio₃ and MenC₂ uptake rates ranged from 83% (Dublin North West) to 97% (Roscommon). HepB₃ ranged from 83% (Dublin North West) to 96% (Roscommon). PCV₂ uptake rates ranged from 82% (Dublin North West) to 99% (Roscommon).

The target uptake rate of ≥95% was reached in Tipperary NR/East Limerick, Tipperary South and Roscommon for D₃, P₃, T₃, Hib₃, Polio₃, HepB₃, MenC₂ and PCV₂.

Twenty two LHOs had ≥90% uptake of D₃, P₃, T₃, Hib₃, Polio₃, HepB₃, MenC₂ and PCV₂.

Table 2. Immunisation uptake (%) at 12 months in cohort born 01/07/2011–30/09/2011

| HSE Area | No. in cohort* | BCG | D ₃ T ₃ | P ₃ | Hib ₃ | Polio ₃ | HepB ₃ | MenC ₂ | PCV ₂ |
|---------------|----------------|-----|-------------------------------|----------------|------------------|--------------------|-------------------|-------------------|------------------|
| Eastern | 7085 | na | 90 | 90 | 90 | 90 | 90 | 90 | 90 |
| Midland | 1137 | 95 | 91 | 91 | 91 | 91 | 91 | 91 | 91 |
| Mid Western | 1544 | 98 | 94 | 94 | 94 | 94 | 94 | 94 | 94 |
| North Eastern | 2119 | na | 93 | 93 | 93 | 93 | 93 | 91 | 91 |
| North Western | 976 | 95 | 92 | 92 | 92 | 92 | 92 | 92 | 92 |
| South Eastern | 2065 | 96 | 93 | 93 | 93 | 93 | 93 | 93 | 93 |
| Southern | 2594 | 95 | 92 | 92 | 92 | 92 | 91 | 89 | 89 |
| Western | 1727 | 4 | 91 | 91 | 91 | 91 | 90 | 90 | 91 |
| Ireland | 19247 | 80 | 91 | 91 | 91 | 91 | 91 | 91 | 91 |

na = not available at this time

*As the denominator/number in cohort varied slightly according to vaccine, most commonly used number is presented here. †Number in cohort for BCG is 10,093

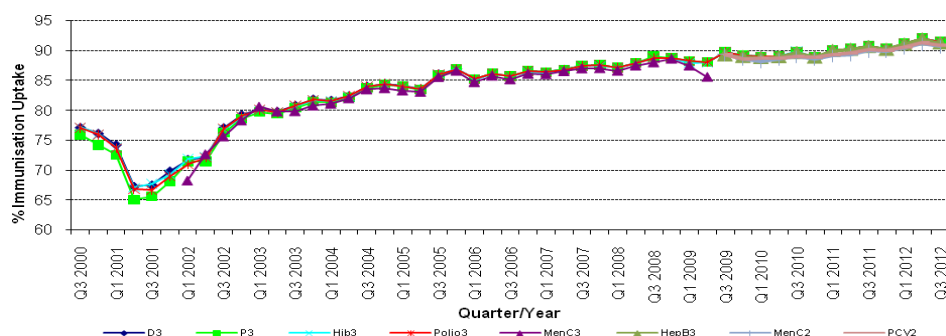


Figure 1. National quarterly immunisation uptake rates at 12 months

Since T₃ uptake identical to D₃ uptake only D₃ uptake figures presented. The Q3-2008 MenC₃ uptake figure is based on data from six of the eight HSE Areas. The Q1-2009 HSE-Eastern Area D₃, P₃, T₃, Polio₃ and MMR₁ uptake figures exclude those born on the 31/03/2007. The Q3-2009 figures are incomplete as two HSE Areas were unable to provide data, two additional areas were unable to provide MenC₂ data and one additional area was unable to provide PCV₂ data. The Q4-2009 figures are incomplete as three HSE Areas were unable to provide data. The Q1-2010 figures are incomplete as two HSE Areas were unable to provide data and three were unable to provide MenC₂ data. The Q2-2010 figures are incomplete as two HSE Areas were unable to provide data. The Q4-2010 figures are incomplete as one HSE Area was unable to provide data.

Internationally

Vaccination coverage statistics for D₃, P₃, T₃, Hib₃ and Polio₃ for children 12 months of age in Quarter 3-2012 were 94.6% in England, 96.4% in Wales, 97.3% in Northern Ireland and 97.4% in Scotland.¹ MenC₂ uptake was 94.0% in England, 96.2% in Wales, 97.3% in Northern Ireland and 97.1% in Scotland.¹ PCV₂ uptake was 94.4% in England, 96.0% in Wales, 97.4% in Northern Ireland and 97.5% in Scotland.¹

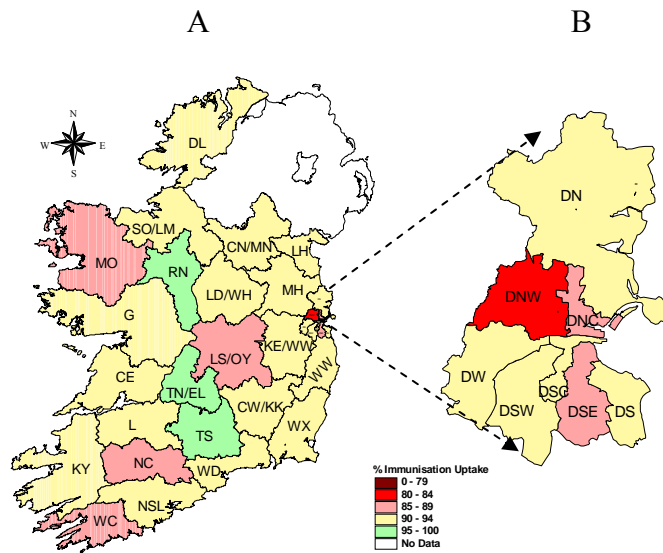


Figure 2. D₃ immunisation uptake rates (%) by LHO, in those 12 months of age in Quarter 3-2012, in (A) Ireland and (B) Dublin. Please see Appendix 3 to translate LHO codes.

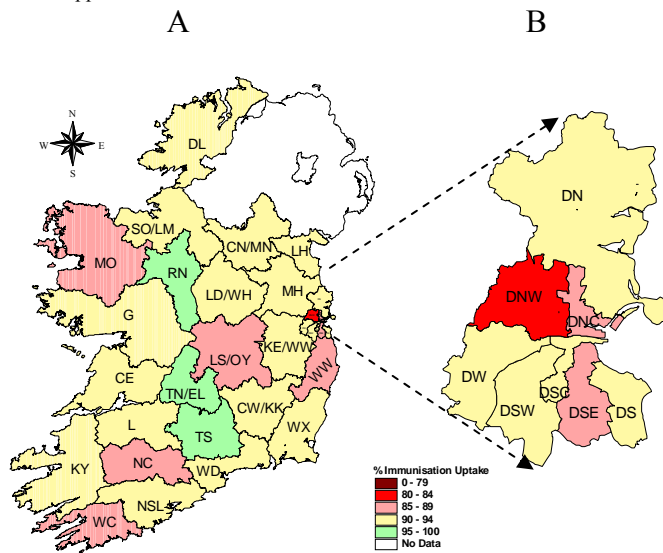


Figure 3. MenC₂ immunisation uptake rates (%) by LHO, in those 12 months of age in Quarter 3-2012, in (A) Ireland and (B) Dublin. Please see Appendix 3 to translate LHO codes.

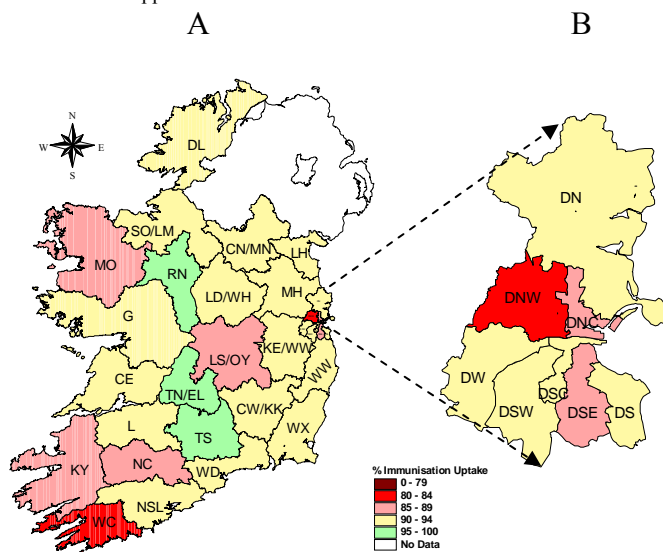


Figure 4. PCV₂ immunisation uptake rates (%) by LHO, in those 12 months of age in Quarter 3-2012, in (A) Ireland and (B) Dublin. Please see Appendix 3 to translate LHO codes.

Immunisation uptake at 24 months

National and HSE Area uptake

Immunisation uptake rates in children 24 months of age in Q3-2012 are presented (Table 3). National uptake rates were 95% for D₃, P₃, T₃, Hib₃, Polio₃ and HepB₃, 92% for MMR₁, 90% for PCV₃, 89% for Hib_b and 85% for MenC₃. Among the HSE Areas the uptake of D₃, P₃, T₃, Hib₃, Polio₃ and HepB₃ ranged from 94-97%, MMR₁ ranged from 90-95%, PCV₃ ranged from 89-94%, Hib_b ranged from 85-95% and MenC₃ ranged from 83-90%. The target uptake of ≥95% was reached for D₃, P₃, T₃, Hib₃ and Polio₃ in seven of the eight HSE Areas, for HepB₃ in six HSE Areas and for MMR₁ and Hib_b in one HSE Area. Six of the eight HSE Areas were able to provide uptake data on MenC_b (one dose of MenC at ≥12 months of age) and PCV_b (one dose of PCV at ≥12 months of age) in Quarter 3 2012. These Areas cover approximately 83% of the national birth cohort. Where data were available, national uptake was 89% for MenC_b and 93% for PCV_b. The target uptake of ≥95% was reached for PCV_b in two HSE Areas and but was not reached in any HSE Area for MenC_b.

Trends

Figure 5 presents the national uptake rates at 24 months for each vaccine from Q1-1999 to Q3-2012. Compared to the previous quarter, national uptake rates in Q3 were unchanged.

In Q3-2012, compared to the previous quarter, uptake rates in the: HSE-Eastern Area increased by 1% for PCV₃ and PCV_b and were unchanged for the remainder of vaccines; HSE-Midland Area decreased by 2-3% for all vaccines except PCV₃ which was unchanged; HSE-Mid Western Area increased by 2% for D₃, T₃, P₃, Hib₃, Polio₃ and HepB₃, decreased by 1% for Hib_b, MenC₃, MenC_b, PCV₃ and MMR₁ and was unchanged for PCV_b; HSE-North-Eastern Area decreased by 1% for all vaccines except for Hib_b, MenC₃, and MMR₁ which were unchanged; HSE-North-Western Area decreased by 1-3% except for Hib₃ which was unchanged and Hib_b and MenC_b which increased by 1%; HSE-South Eastern Area increased by 1-2% except for Hib_b which was unchanged and MenC₃ which increased by 4%; HSE-Southern Area was unchanged for most vaccines except HepB₃ decreased by 1% and PCV_b increased by 1%; HSE-Western increased by 1-2% except MMR₁ which was unchanged and PCV₃ which decreased by 1%.

LHO uptake

Immunisation uptake rates in children 24 months of age in Q3-2012 are presented by LHO in Appendix 2. D₃, Hib_b, MenC₃, MenC_b, PCV₃, PCV_b and MMR₁ immunisation uptake rates are mapped by LHO in figures 6-12.

Among the LHOs, uptake of D₃, T₃, P₃ and Polio₃ ranged from 89-99%, HepB₃ ranged from 88-98%, Hib₃ ranged from 88-99%, MMR₁ ranged from 86-96%, PCV₃ ranged from 83-97%, PCV_b ranged from 84-96%, MenC₃ ranged from 76-94% MenC_b ranged from 81-95% and Hib_b ranged from 79-97%.

The target uptake of ≥95% was reached in 22 LHOs for D₃, P₃, T₃, Hib₃ and Polio₃, 20 LHOs for HepB₃, 6 for Hib_b, 5 for PCV_b and MMR₁, 2 for MenC_b and PCV₃ and in none for MenC₃.

Thirty LHOs had ≥90% uptake of D₃, P₃, T₃, Hib₃, Polio₃ and HepB₃, 23 had ≥90% uptake of MMR₁ and PCV_b, 20 had ≥90% uptake of PCV₃, 14 had ≥90% of Hib_b and MenC_b and five had ≥90% uptake of MenC₃.

Table 3. Immunisation uptake (%) at 24 months in cohort born 01/07/2010–30/09/2010

| HSE Area | No. in Cohort* | D ₃ /T ₃ /P ₃ /Polio ₃ | Hib ₃ | Hib _b | HepB ₃ | MenC ₃ | MenC _b | PCV ₃ | PCV _b | MMR ₁ |
|---------------|----------------|--------------------------------------------------------------------|------------------|------------------|-------------------|-------------------|-------------------|------------------|------------------|------------------|
| Eastern | 7046 | 94 | 94 | 87 | 94 | 83 | 87 | 89 | 92 | 91 |
| Midland | 1238 | 95 | 95 | 95 | 95 | 89 | 93 | 93 | 93 | 93 |
| Mid Western | 1514 | 96 | 96 | 89 | 96 | 85 | 89 | 91 | 93 | 92 |
| North Eastern | 1385 | 95 | 95 | 86 | 95 | 84 | na | 90 | na | 91 |
| North Western | 948 | 97 | 97 | 93 | 96 | 86 | 94 | 89 | 95 | 92 |
| South Eastern | 2008 | 97 | 97 | 94 | 97 | 90 | 93 | 94 | 95 | 95 |
| Southern | 2602 | 96 | 95 | 85 | 94 | 86 | 89 | 91 | 93 | 93 |
| Western | 1811 | 96 | 96 | 92 | 96 | 83 | na | 89 | na | 90 |
| Ireland | 18552 | 95 | 95 | 89 | 95 | 85 | 89 | 90 | 93 | 92 |

* As the denominator/number in cohort varied slightly according to vaccine, most commonly used number is presented here.

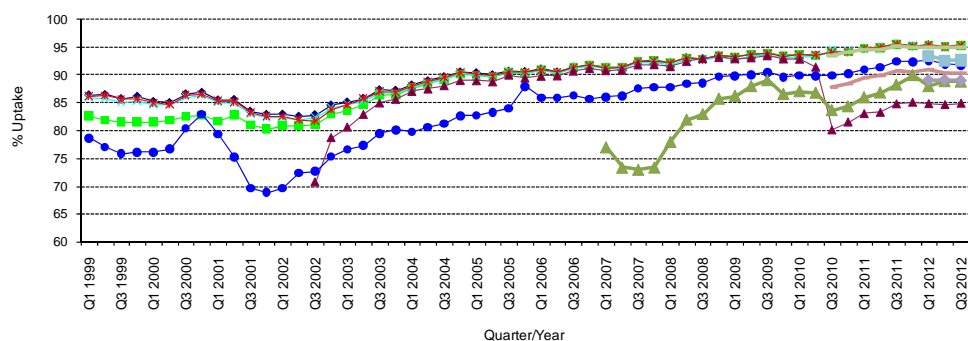


Figure 5. National quarterly immunisation uptake rates at 24 months

Notes: The Q4-2005 MMR₁ figure is based on data from seven of the eight HSE Areas. The Q1-2006 MMR₁ figure includes the HSE-Eastern Area figure that is an estimate only. The Q1-2007, Q3-2007, Q2-2008 and Q3-2008 Hib_b figures are based on data from seven of the eight HSE Areas. In Q1-2008 the HSE-SE changed their Hib_b data extraction method compared to previous quarters; in Q1-2008 the uptake of Hib_b in the HSE-SE was 83% compared to 53% in Q4-2007. The Q3-2008 MenC₃ figure is based on data from six of the eight HSE Areas. The Q1-2009 HSE-Eastern Area D₃, P₃, T₃, Polio₃ and MMR₁ uptake figures exclude those born on the 31/03/2007. The Q2-2009 HSE-Eastern Area Hib_b uptake figures exclude uptake figures from Dublin North. The Q4-2009 figures are based on data from seven of the eight HSE Areas. The Q4-2009 Hib_b figures also exclude uptake figures from Dublin North. The Q1-2010 figures are based on data from six of the eight HSE Areas. The Q1-2010 Hib_b figures also exclude uptake figures from Dublin North. The Q2-2010 and Q4-2010 figures are based on data from seven of the eight HSE Areas.

Internationally

In Q3-2012, vaccination coverage statistics at 24 months for D₃, P₃, T₃, Hib₃ and Polio₃ were 96.3% in England, 97.7% in Wales, 98.6% in Northern Ireland and 98.2% in Scotland.¹ MenC₂ uptake was 95.2% in England, 96.7% in Wales, 97.2% in Northern Ireland and 96.4% in Scotland.¹ PCV booster was 92.4% in England, 95.1% in Wales, 95.5% in Northern Ireland and 95.5% in Scotland. Hib/MenC booster was 92.6% in England, 94.5% in Wales, 95.7% in Northern Ireland and 95.7% in Scotland.¹ MMR₁ uptake was 92.2% in England, 94.2% in Wales, 95.4% in Northern Ireland and 94.8% in Scotland.¹ Please see HPA report for caveats.¹

Conclusions

In Quarter 3-2012, national uptake rates at 24 months for D₃, P₃, T₃, Hib₃, Polio₃ and HepB₃ reached the target of ≥95%. Since the introduction of the new childhood schedule in September 2008 MenC₃ and Hib_b uptake are considerably lower than the uptake of the other recommended vaccines both of which should be given at 13 months of age suggesting that parents are less likely to get the necessary vaccines at this age.

Acknowledgements

HPSC would like to thank the HSE Areas for providing data and special thanks to the Specialists in Public Health Medicine, Immunisation Co-ordinators, Surveillance Scientists and Systems Analysts for their assistance.

References 1. Quarterly vaccination coverage statistics for children aged up to five years in the UK (COVER programme): July to September 2012 Health Protection Report 2012: 6 (Number 50). Available at: http://www.hpa.org.uk/hpr/archives/2012/hpr5012_cover.pdf (accessed 01/02/2013)

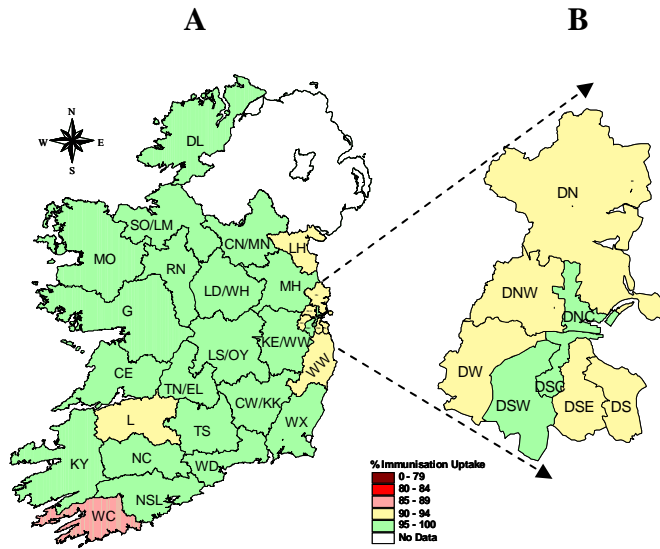


Figure 6. D₃ immunisation uptake rates (%) by LHO, in those 24 months of age in Quarter 3-2012, in (A) Ireland and (B) Dublin. Please see Appendix 3 to translate LHO codes.

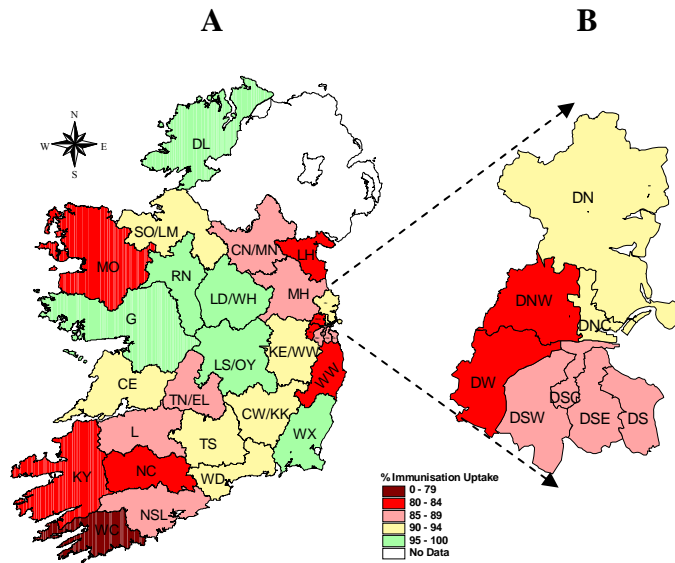


Figure 7. Hib₆ immunisation uptake rates (%) by LHO, in those 24 months of age in Quarter 3-2012, in (A) Ireland and (B) Dublin. Please see Appendix 3 to translate LHO codes.

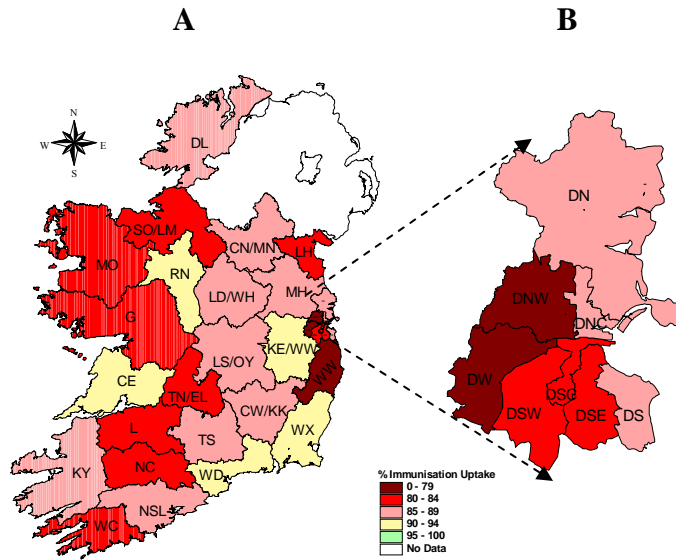


Figure 8. MenC₃ immunisation uptake rates (%) by LHO, in those 24 months of age in Quarter 3-2012, in (A) Ireland and (B) Dublin. Please see Appendix 3 to translate LHO codes.

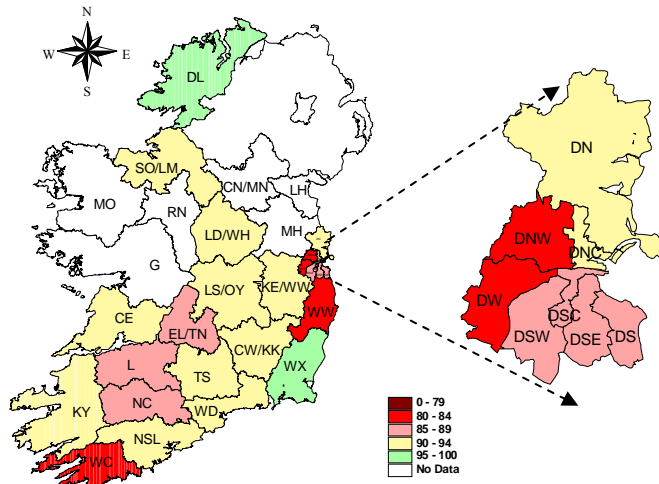


Figure 9. MenC_b immunisation uptake rates (%) by LHO, in those 24 months of age in Quarter 3-2012, in (A) Ireland and (B) Dublin. Please see Appendix 3 to translate LHO codes.

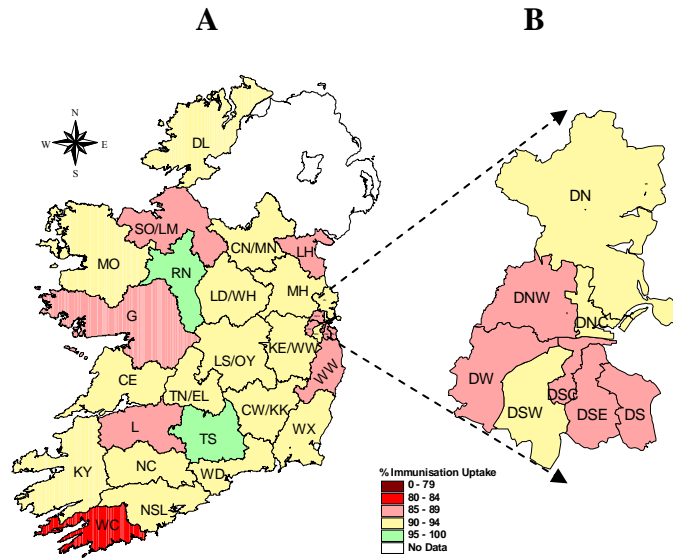


Figure 10. PCV₃ immunisation uptake rates (%) by LHO, in those 24 months of age in Quarter 3-2012, in (A) Ireland and (B) Dublin. Please see Appendix 3 to translate LHO codes.

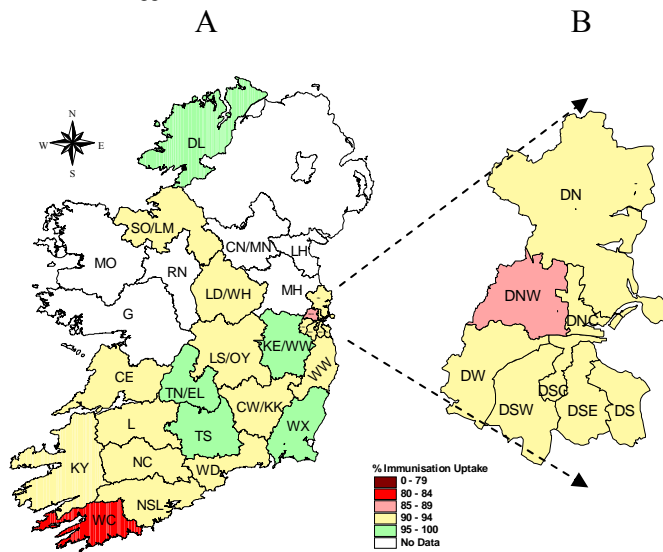


Figure 11. PCV₆ immunisation uptake rates (%) by LHO, in those 24 months of age in Quarter 3-2012, in (A) Ireland and (B) Dublin. Please see Appendix 3 to translate LHO codes.

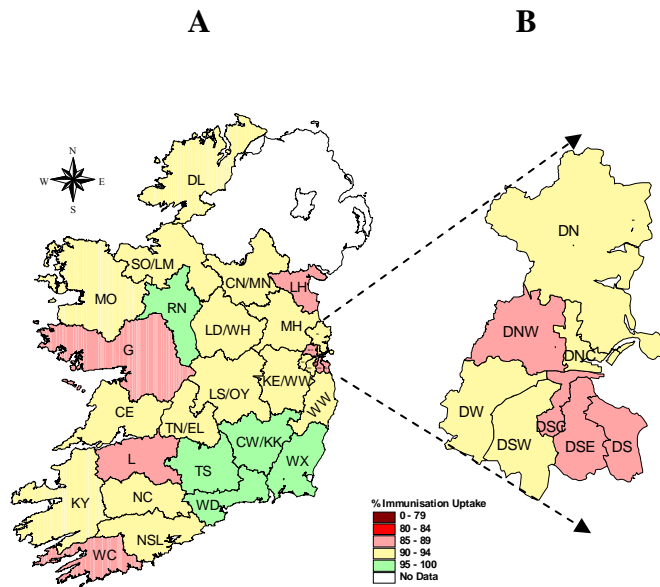


Figure 12. MMR₁ immunisation uptake rates (%) by LHO, in those 24 months of age in Quarter 3-2012, in (A) Ireland and (B) Dublin. Please see Appendix 3 to translate LHO codes.

Appendix 1

| Immunisation Uptake at 12 Months in Cohort Born 01/07/2011-30/09/2011 | | | | | | | | | | | |
|-----------------------------------------------------------------------|----------------------------|-----------------------|-----------------------------------------------|-------------------------|-------------------------------|----------------|------------------|--------------------|-------------------|-------------------|------------------|
| HSE Area | LHO/HSE Area | No. in cohort for BCG | No. in cohort for other vaccines [*] | Immunisation Uptake (%) | | | | | | | |
| | | | | BCG | D ₃ T ₃ | P ₃ | Hib ₃ | Polio ₃ | HepB ₃ | MenC ₂ | PCV ₂ |
| Eastern | Dublin South | na | 455 | na | 93 | 93 | 93 | 93 | 93 | 93 | 94 |
| | Dublin South East | na | 446 | na | 89 | 89 | 89 | 89 | 89 | 88 | 88 |
| | Dublin South City | na | 481 | na | 92 | 92 | 92 | 92 | 92 | 92 | 92 |
| | Dublin South West | na | 737 | na | 92 | 92 | 92 | 92 | 92 | 92 | 93 |
| | Dublin West | na | 733 | na | 91 | 91 | 91 | 91 | 91 | 91 | 91 |
| | Dublin North West | na | 1074 | na | 83 | 83 | 83 | 83 | 83 | 83 | 82 |
| | Dublin North Central | na | 470 | na | 89 | 89 | 89 | 89 | 89 | 89 | 89 |
| | Dublin North | na | 1130 | na | 91 | 91 | 91 | 91 | 91 | 91 | 91 |
| | Kildare/West Wicklow | na | 1082 | na | 93 | 93 | 93 | 93 | 93 | 93 | 93 |
| | Wicklow | na | 477 | na | 90 | 90 | 90 | 90 | 90 | 89 | 90 |
| HSE-E Total | | na | 7085 | na | 90 | 90 | 90 | 90 | 90 | 90 | 90 |
| Midland | Laois/Offaly | 653 | 653 | 95 | 89 | 89 | 89 | 89 | 89 | 89 | 89 |
| | Longford/Westmeath | 484 | 484 | 95 | 93 | 93 | 93 | 93 | 93 | 93 | 93 |
| | HSE-M Total | 1137 | 1137 | 95 | 91 | 91 | 91 | 91 | 91 | 91 | 91 |
| Mid Western | Clare | 442 | 444 | 98 | 94 | 94 | 94 | 94 | 94 | 94 | 94 |
| | Limerick | 567 | 570 | 99 | 93 | 93 | 93 | 93 | 93 | 92 | 93 |
| | Tipperary NR/East Limerick | 527 | 530 | 98 | 95 | 95 | 95 | 95 | 95 | 95 | 95 |
| | HSE-MW Total | 1536 | 1544 | 98 | 94 | 94 | 94 | 94 | 94 | 94 | 94 |
| North Eastern | Cavan/Monaghan | na | 633 | na | 93 | 93 | 93 | 93 | 93 | 91 | 91 |
| | Louth | na | 523 | na | 93 | 93 | 93 | 93 | 93 | 90 | 91 |
| | Meath | na | 963 | na | 92 | 92 | 92 | 92 | 92 | 90 | 90 |
| | HSE-NE Total | na | 2119 | na | 93 | 93 | 93 | 93 | 93 | 91 | 91 |
| North Western | Donegal | 597 | 597 | 94 | 92 | 92 | 92 | 92 | 92 | 92 | 92 |
| | Sligo/Leitrim | 379 | 379 | 97 | 93 | 93 | 93 | 93 | 93 | 92 | 93 |
| | HSE-NW Total | 976 | 976 | 95 | 92 | 92 | 92 | 92 | 92 | 92 | 92 |
| South Eastern | Carlow/Kilkenny | 550 | 550 | 97 | 92 | 92 | 92 | 92 | 92 | 92 | 93 |
| | South Tipperary | 386 | 386 | 99 | 95 | 95 | 95 | 95 | 95 | 95 | 95 |
| | Waterford | 520 | 520 | 94 | 92 | 92 | 92 | 92 | 92 | 92 | 93 |
| | Wexford | 609 | 609 | 97 | 93 | 93 | 93 | 93 | 93 | 92 | 93 |
| | HSE-SE Total | 2065 | 2065 | 96 | 93 | 93 | 93 | 93 | 93 | 93 | 93 |
| Southern | North Cork | 392 | 381 | 96 | 89 | 89 | 89 | 89 | 88 | 87 | 87 |
| | North South Lee | 1553 | 1513 | 96 | 93 | 93 | 93 | 93 | 92 | 90 | 90 |
| | West Cork | 184 | 182 | 95 | 88 | 88 | 87 | 88 | 87 | 85 | 83 |
| | Kerry | 523 | 518 | 93 | 92 | 92 | 92 | 92 | 92 | 90 | 89 |
| | HSE-S Total | 2652 | 2594 | 95 | 92 | 92 | 92 | 92 | 92 | 91 | 89 |
| Western | Galway | na | 1045 | na | 90 | 90 | 90 | 90 | 90 | 90 | 90 |
| | Mayo | na | 434 | na | 89 | 89 | 89 | 89 | 89 | 88 | 89 |
| | Roscommon | na | 248 | na | 97 | 97 | 97 | 97 | 96 | 97 | 99 |
| | HSE-W Total | 1727 | 1727 | 4 | 91 | 91 | 91 | 91 | 90 | 90 | 91 |
| Ireland | | 10093 | 19247 | 80 | 91 | 91 | 91 | 91 | 91 | 91 | 91 |

na=not available

* As the denominator/number in cohort varied slightly according to vaccine, most commonly used number is presented here.

Please note while North Lee and South Lee are two separate LHOs their combined immunisation uptake data are reported here.

Appendix 2

| Immunisation uptake (%) at 24 months of age in cohort born 01/07/2010-30/09/2010 | | | | | | | | | | | | | |
|----------------------------------------------------------------------------------|---------------------------|----------------|-------------------------------|----------------|------------------|------------------|--------------------|-------------------|-------------------|-------------------|------------------|------------------|------------------|
| HSE Area | LHO/HSE Area | No. in cohort* | Immunisation Uptake (%) | | | | | | | | | | |
| | | | D ₃ T ₃ | P ₃ | Hib ₃ | Hib _b | Polio ₃ | HepB ₃ | MenC ₃ | MenC _b | PCV ₃ | PCV _b | MMR ₁ |
| Eastern | Dublin South | 438 | 93 | 93 | 93 | 87 | 93 | 93 | 85 | 87 | 89 | 90 | 89 |
| | Dublin South East | 438 | 94 | 94 | 94 | 86 | 94 | 94 | 82 | 85 | 87 | 90 | 89 |
| | Dublin South City | 454 | 96 | 96 | 96 | 85 | 96 | 96 | 80 | 85 | 87 | 90 | 89 |
| | Dublin South West | 655 | 95 | 95 | 95 | 87 | 95 | 95 | 82 | 87 | 90 | 94 | 94 |
| | Dublin West | 773 | 91 | 91 | 91 | 81 | 91 | 91 | 76 | 81 | 87 | 91 | 90 |
| | Dublin North West | 1043 | 93 | 93 | 93 | 82 | 93 | 93 | 79 | 82 | 86 | 88 | 88 |
| | Dublin North Central | 441 | 96 | 96 | 96 | 90 | 96 | 96 | 86 | 90 | 90 | 93 | 92 |
| | Dublin North | 1118 | 94 | 94 | 94 | 90 | 94 | 94 | 87 | 90 | 91 | 93 | 92 |
| | Kildare/West Wicklow | 1128 | 96 | 96 | 96 | 94 | 96 | 96 | 90 | 94 | 92 | 95 | 94 |
| | Wicklow | 558 | 94 | 94 | 94 | 82 | 94 | 94 | 78 | 81 | 89 | 91 | 90 |
| HSE-E Total | 7046 | 94 | 94 | 94 | 87 | 94 | 94 | 83 | 87 | 89 | 92 | 91 | |
| Midland | Laois/Offaly | 695 | 95 | 95 | 95 | 95 | 95 | 95 | 89 | 93 | 93 | 93 | 94 |
| | Longford/Westmeath | 543 | 96 | 96 | 96 | 96 | 96 | 96 | 89 | 93 | 93 | 94 | 93 |
| | HSE-M Total | 1238 | 95 | 95 | 95 | 95 | 95 | 95 | 89 | 93 | 93 | 93 | 93 |
| Mid Western | Clare | 430 | 96 | 96 | 96 | 93 | 96 | 96 | 91 | 93 | 93 | 94 | 93 |
| | Limerick | 532 | 94 | 94 | 94 | 86 | 94 | 94 | 83 | 86 | 89 | 90 | 89 |
| | Tipperary NR/East Limeric | 552 | 96 | 96 | 96 | 88 | 96 | 96 | 84 | 87 | 92 | 95 | 94 |
| | HSE-MW Total | 1514 | 96 | 96 | 96 | 89 | 96 | 96 | 85 | 89 | 91 | 93 | 92 |
| North Eastern | Cavan/Monaghan | 386 | 96 | 96 | 96 | 88 | 96 | 96 | 86 | na | 93 | na | 93 |
| | Louth | 363 | 93 | 93 | 93 | 81 | 93 | 93 | 80 | na | 88 | na | 88 |
| | Meath | 636 | 95 | 95 | 95 | 89 | 95 | 95 | 85 | na | 90 | na | 92 |
| | HSE-NE Total | 1385 | 95 | 95 | 95 | 86 | 95 | 95 | 84 | na | 90 | na | 91 |
| North Western | Donegal | 591 | 97 | 97 | 96 | 95 | 97 | 96 | 89 | 95 | 91 | 95 | 92 |
| | Sligo/Leitrim | 357 | 97 | 97 | 97 | 92 | 97 | 96 | 82 | 93 | 87 | 94 | 93 |
| | HSE-NW Total | 948 | 97 | 97 | 97 | 93 | 97 | 96 | 86 | 94 | 89 | 95 | 92 |
| South Eastern | Carlow/Kilkenny | 548 | 97 | 97 | 97 | 94 | 97 | 97 | 86 | 94 | 93 | 94 | 95 |
| | South Tipperary | 352 | 97 | 97 | 97 | 93 | 97 | 97 | 89 | 92 | 95 | 95 | 96 |
| | Waterford | 526 | 96 | 96 | 96 | 93 | 96 | 96 | 91 | 92 | 94 | 94 | 95 |
| | Wexford | 582 | 98 | 98 | 98 | 97 | 98 | 97 | 93 | 95 | 94 | 96 | 96 |
| | HSE-SE Total | 2008 | 97 | 97 | 97 | 94 | 97 | 97 | 90 | 93 | 94 | 95 | 95 |
| Southern | North Cork | 401 | 97 | 97 | 96 | 83 | 97 | 94 | 84 | 86 | 90 | 91 | 91 |
| | North South Lee | 1517 | 97 | 97 | 95 | 86 | 97 | 94 | 87 | 90 | 93 | 94 | 94 |
| | West Cork | 197 | 89 | 89 | 88 | 79 | 89 | 88 | 80 | 82 | 83 | 84 | 86 |
| | Kerry | 487 | 97 | 97 | 96 | 84 | 97 | 95 | 87 | 91 | 91 | 94 | 93 |
| | HSE-S Total | 2602 | 96 | 96 | 95 | 85 | 96 | 94 | 86 | 89 | 91 | 93 | 93 |
| Western | Galway | 1104 | 95 | 95 | 95 | 95 | 95 | 95 | 80 | na | 87 | na | 88 |
| | Mayo | 468 | 96 | 96 | 96 | 82 | 96 | 96 | 83 | na | 91 | na | 90 |
| | Roscommon | 239 | 99 | 99 | 99 | 95 | 99 | 98 | 94 | na | 97 | na | 95 |
| | HSE-W Total | 1811 | 96 | 96 | 96 | 92 | 96 | 96 | 83 | na | 89 | na | 90 |
| Ireland | 18552 | 95 | 95 | 95 | 89 | 95 | 95 | 85 | 89 | 90 | 93 | 92 | |

na=not available

*As the denominator/number in cohort varied slightly according to vaccine. The most commonly used number is reported here.

Please note while North Lee and South Lee are two separate LHOs their combined immunisation uptake data are reported here.

Appendix 3

| Local Health Office (LHO) Abbreviations (used in maps in this report) | Local Health Office (LHO) |
|--------------------------------------------------------------------------|--------------------------------|
| CE | Clare |
| CN/MN | Cavan/Monaghan |
| CW/KK | Carlow/Kilkenny |
| DL | Donegal |
| DN | Dublin North |
| DNC | Dublin North Central |
| DNW | Dublin North West |
| DS | Dublin South |
| DSC | Dublin South City |
| DSE | Dublin South East |
| DSW | Dublin South West |
| DW | Dublin West |
| G | Galway |
| KE/WW | Kildare/West Wicklow |
| KY | Kerry |
| L | Limerick |
| LD/WD | Longford/Westmeath |
| LH | Louth |
| LS/OY | Laois/Offaly |
| MH | Meath |
| MO | Mayo |
| NC | North Cork |
| NSL* | North South Lee* |
| RN | Roscommon |
| SO/LM | Sligo/Leitrim |
| TN/EL | Tipperary North /East Limerick |
| TS | South Tipperary |
| WC | West Cork |
| WD | Waterford |
| WX | Wexford |
| WW | Wicklow |

*Please note while North Lee and South Lee are two separate LHOs their combined immunisation uptake data are reported here