

## Summary

### Children 12 months of age in Quarter 2-2012

- National immunisation uptake rates were 92% for D<sub>3</sub>, P<sub>3</sub>, T<sub>3</sub>, Hib<sub>3</sub>, Polio<sub>3</sub> and HepB<sub>3</sub> and 91% for PCV<sub>2</sub> and MenC<sub>2</sub>. Compared to Q1-2012, national uptake rates in Q2-2012 for D<sub>3</sub>, P<sub>3</sub>, T<sub>3</sub>, Hib<sub>3</sub>, Polio<sub>3</sub>, HepB<sub>3</sub> and MenC<sub>2</sub> increased by 1% while PCV<sub>2</sub> was unchanged.
- Among the HSE Areas, the uptake rates for D<sub>3</sub>, P<sub>3</sub>, T<sub>3</sub>, Hib<sub>3</sub>, Polio<sub>3</sub> and HepB<sub>3</sub> ranged from 91% to 95% and MenC<sub>2</sub> and PCV<sub>2</sub> ranged from 88% to 95%. The HSE-Midland, Mid-Western and North-Western Areas reached the target of ≥95% for all vaccines.
- Among the Local Health Offices, the target uptake rate of ≥95% was reached in Dublin South City, Sligo/Leitrim, Longford/Westmeath, Limerick, Tipperary NE/East Limerick and Roscommon for D<sub>3</sub>, P<sub>3</sub>, T<sub>3</sub>, Hib<sub>3</sub>, Polio<sub>3</sub>, HepB<sub>3</sub>, MenC<sub>2</sub> and PCV<sub>2</sub> and in Donegal for D<sub>3</sub>, P<sub>3</sub>, T<sub>3</sub>, Hib<sub>3</sub>, Polio<sub>3</sub> and MenC<sub>2</sub>.

### Children 24 months of age in Quarter 2-2012

- National uptake rates were 95% for D<sub>3</sub>, P<sub>3</sub>, T<sub>3</sub>, Hib<sub>3</sub>, Polio<sub>3</sub> and HepB<sub>3</sub>, 92% for MMR<sub>1</sub>, 90% for PCV<sub>3</sub>, 89% for Hib<sub>b</sub> and 85% for MenC<sub>3</sub>. Six of the eight HSE Areas were able to provide uptake data on MenC<sub>b</sub> (one dose of MenC at ≥12 months of age) and PCV<sub>b</sub> (one dose of PCV at ≥12 months of age) in Quarter 2 2012. These Areas cover approximately 80% of the national birth cohort. Where data were available, national uptake was unchanged compared to Q1-2012, 89% for MenC<sub>b</sub> and 93% for PCV<sub>b</sub>.

Compared to the previous quarter, national uptake rates in Q2 2012 for: MMR<sub>1</sub> and PCV<sub>3</sub> decreased by 1%, Hib<sub>b</sub> increased by 1% while D<sub>3</sub>, P<sub>3</sub>, T<sub>3</sub>, Hib<sub>3</sub>, Polio<sub>3</sub>, HepB<sub>3</sub>, MenC<sub>b</sub>, MenC<sub>3</sub> and PCV<sub>b</sub> were unchanged.

- The target uptake of ≥95% was reached for D<sub>3</sub>, P<sub>3</sub>, T<sub>3</sub>, Hib<sub>3</sub>, HepB<sub>3</sub> and Polio<sub>3</sub> in five of the eight HSE Areas, for MMR<sub>1</sub> and PCV<sub>b</sub> in two HSE Areas and for Hib<sub>b</sub> and MenC<sub>b</sub> in one HSE Area. The target uptake of ≥95% was not reached in any HSE Area for MenC<sub>3</sub> or PCV<sub>3</sub>.
- The target uptake of ≥95% was reached in 23 LHOs for D<sub>3</sub>, P<sub>3</sub>, T<sub>3</sub>, and Polio<sub>3</sub>, 22 LHOs for Hib<sub>3</sub> and HepB<sub>3</sub>, 9 for PCV<sub>b</sub>, 7 for MMR<sub>1</sub>, 6 for Hib<sub>b</sub>, 4 for MenC<sub>b</sub>, 1 for PCV<sub>3</sub> and in none for MenC<sub>3</sub>.

## Introduction

Since September 1st 2008, the childhood immunisation schedule outlined in table 1 has been implemented for children born on or after 1<sup>st</sup> July 2008.

Compared to the previous schedule (table 1), the changes to the primary schedule for children born on or after 1<sup>st</sup> July 2008 include;  
 Introduction of a hepatitis B vaccine (as part of a 6 in 1 vaccine) given at 2, 4 and 6 months of age  
 Introduction of pneumococcal conjugate vaccine given at 2, 6 and 12 months of age  
 Change in timing of meningococcal serogroup C conjugate vaccination, now given at 4, 6 and 13 months of age  
 Change in timing of the *Haemophilus influenzae* type b booster vaccination, now given at 13 months of age.

Please see [www.immunisation.ie](http://www.immunisation.ie) for complete information on the Irish childhood immunisation schedule.

The immunisation uptake statistics presented in this report relate to children 12 and 24 months of age in Quarter 2-2012.

The immunisation uptake rates presented in this report for children at 12 months of age in Quarter 2-2012 are children born between 01/04/2011 and 30/06/2011 and who have received three doses of vaccines against diphtheria (D<sub>3</sub>), pertussis (P<sub>3</sub>), tetanus (T<sub>3</sub>), *Haemophilus influenzae* type b (Hib<sub>3</sub>), polio (Polio<sub>3</sub>), hepatitis B (HepB<sub>3</sub>), two doses of meningococcal serogroup C conjugate vaccine (MenC<sub>2</sub>), two doses of pneumococcal conjugate vaccine (PCV<sub>2</sub>) and one dose of BCG vaccine.

The immunisation uptake rates presented in this report for children at 24 months of age in Quarter 2-2012 are children born between 01/04/2010 and 30/06/2010 and who have received three doses of vaccines against diphtheria (D<sub>3</sub>), pertussis (P<sub>3</sub>), tetanus (T<sub>3</sub>), *Haemophilus influenzae* type b (Hib<sub>3</sub>), polio (Polio<sub>3</sub>), hepatitis B (HepB<sub>3</sub>), meningococcal group C (MenC<sub>3</sub>) and pneumococcal conjugate vaccine (PCV<sub>3</sub>), one booster dose of vaccine against *Haemophilus influenzae* type b on or after 12 months of age (Hib<sub>b</sub>), one dose of vaccine against meningococcal group C (MenC<sub>b</sub>) on or after twelve months of age, one dose of vaccine against pneumococcal conjugate vaccine (PCV<sub>b</sub>) on or after twelve months of age and one dose of vaccine against measles, mumps and rubella (MMR<sub>1</sub>). The Quarter 2-2012 cohort of children at 24 months was therefore the eighth cohort recommended the new immunisation schedule. (Children that were 24 months of age in Quarter 3-2010 were children born between July 1st and September 30th 2008 and were therefore the first cohort recommended the new immunisation schedule.)

The national immunisation uptake statistics, based on available data, for Quarter 2-2012 are presented in this document, the uptake statistics are also presented by HSE Area and Local Health Office (LHO).

The uptake rates presented here were rounded to zero decimal place.

While there are 32 LHOs the immunisation uptake data for North Lee and South Lee are combined in this report.

**Table 1.** Change in Primary Childhood Immunisation Schedule (introduced on September 1<sup>st</sup> 2008)

Age	Children born before 01/07/2008	Children born on or after 01/07/2008
Birth	BCG	BCG
2 months	DTaP/Hib/IPV + MenC	DTaP/Hib/IPV/HepB + PCV
4 months	DTaP/Hib/IPV + MenC	DTaP/Hib/IPV/HepB + MenC
6 months	DTaP/Hib/IPV + MenC	DTaP/Hib/IPV/HepB + PCV + MenC
12 months	MMR + Hib	MMR + PCV
13 months	-	MenC + Hib

Please see [www.immunisation.ie](http://www.immunisation.ie) for complete information on the Irish childhood immunisation schedule and the immunisation guidelines for Ireland.

BCG	Bacille Calmette Guerin vaccine
DTaP	Diphtheria, Tetanus and acellular Pertussis vaccine
Hib	<i>Haemophilus influenzae</i> type b vaccine
HepB	Hepatitis B vaccine
IPV	Inactivate Polio Virus vaccine
MMR	Measles, Mumps and Rubella vaccine
MenC	Meningococcal group C vaccine
PCV	Pneumococcal Conjugate Vaccine

## Immunisation uptake at 12 months

### National and HSE Area uptake

Immunisation uptake rates in children 12 months of age in Q2-2012 are presented by HSE Area in table 2. National uptake rates were 92% for D<sub>3</sub>, P<sub>3</sub>, T<sub>3</sub>, Hib<sub>3</sub>, Polio<sub>3</sub>, HepB<sub>3</sub>, and 91% for PCV<sub>2</sub> and MenC<sub>2</sub>. Among the HSE Areas the uptake rates for D<sub>3</sub>, P<sub>3</sub>, T<sub>3</sub>, Hib<sub>3</sub>, Polio<sub>3</sub> and HepB<sub>3</sub> ranged from 91% to 95% and MenC<sub>2</sub> and PCV<sub>2</sub> ranged from 88% to 95%. Seven HSE Areas had ≥90% uptake of these vaccines.

BCG uptake data were available for six of the eight HSE Areas in Q2-2012; these areas cover approximately 53% of the national birth cohort. Where data were available, national uptake was 80% for the BCG vaccination. This is unchanged compared to the previous quarter.

### National & HSE Area trends

Figure 1 presents the national uptake rates at 12 months for each vaccine from Q3-2000 to Q2-2012. Compared to Q1-2012, national uptake rates in Q2-2012 for D<sub>3</sub>, P<sub>3</sub>, T<sub>3</sub>, Hib<sub>3</sub>, Polio<sub>3</sub>, HepB<sub>3</sub> and MenC<sub>2</sub> increased by 1% while PCV<sub>2</sub> was unchanged.

In Q2-2012, the HSE-Midland Area reached the target of 95% for all vaccines. The HSE-Midland Area also previously reached the target for all vaccines in Q1-2012 and Q3-2011. In Q2-2012, the HSE-Mid-Western and North Western Areas reached the target of 95% for D<sub>3</sub>, P<sub>3</sub>, T<sub>3</sub>, Hib<sub>3</sub>, Polio<sub>3</sub>, HepB<sub>3</sub>, PCV<sub>2</sub> and MenC<sub>2</sub> for the first time.

In Q2-2012, compared to the previous quarter, uptake rates in the: HSE-Eastern Area increased by 1% for all vaccines; HSE-Midland Area decreased by 1% for all vaccines (BCG remained the same at 96%); HSE-Mid Western Area increased by 1% for all vaccines except BCG which declined by 1%; HSE-North-Eastern Area increased by 3% for all vaccines; HSE-North-Western Area increased by 1% except for BCG which decreased by 1%; HSE-South Eastern Area declined by 1-2% except for BCG with increased by 1%; HSE-Southern Area increased by 1-2% ; HSE-Western increased by 1% except BCG which remained unchanged.

### LHO uptake

The immunisation uptake rates by LHO are shown in appendix 1. D<sub>3</sub>, MenC<sub>2</sub> and PCV<sub>2</sub> immunisation uptake rates are mapped by LHO in figures 2-4.

Among the 15 LHOs reporting BCG data, BCG uptake ranged from 92% to 98% with 11 reporting uptake of ≥95%.

D<sub>3</sub>, P<sub>3</sub>, T<sub>3</sub>, Polio<sub>3</sub> HepB<sub>3</sub> uptake rates ranged from 84% (West Cork) to 96% (Dublin South City, Longford/Westmeath, Limerick and Roscommon). Hib<sub>3</sub> uptake rates ranged from 83% (West Cork) to 96% (Dublin South City, Longford/Westmeath, Limerick, and Roscommon). MenC<sub>2</sub> uptake rates ranged from 82% (West Cork) to 96% (Longford/Westmeath, Limerick and Tipperary N/East Limerick). PCV<sub>2</sub> uptake rates ranged from 83% (West Cork) to 97% (Roscommon).

The target uptake rate of ≥95% was reached in Dublin South City, Longford/Westmeath, Limerick, Tipperary North/East Limerick, Sligo/Leitrim, and Roscommon for D<sub>3</sub>, P<sub>3</sub>, T<sub>3</sub>, Hib<sub>3</sub>, Polio<sub>3</sub>, HepB<sub>3</sub>, MenC<sub>2</sub> and PCV<sub>2</sub>; and in Donegal for D<sub>3</sub>, P<sub>3</sub>, T<sub>3</sub>, Hib<sub>3</sub>, Polio<sub>3</sub>, and MenC<sub>2</sub>

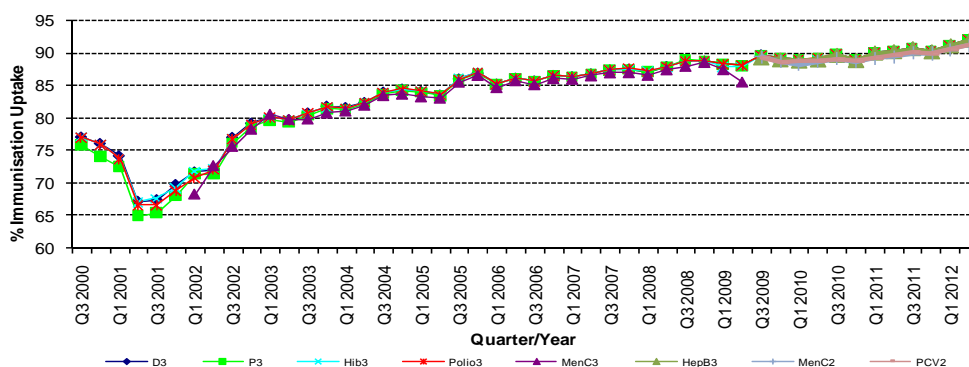
Twenty three LHOs had ≥90% uptake of D<sub>3</sub>, P<sub>3</sub>, T<sub>3</sub>, Hib<sub>3</sub>, Polio<sub>3</sub>, HepB<sub>3</sub>, MenC<sub>2</sub> and PCV<sub>2</sub>.

**Table 2.** Immunisation uptake (%) at 12 months in cohort born 01/04/2011–30/06/2011

HSE Area	No. in cohort*	BCG	D <sub>3</sub> T <sub>3</sub>	P <sub>3</sub>	Hib <sub>3</sub>	Polio <sub>3</sub>	HepB <sub>3</sub>	MenC <sub>2</sub>	PCV <sub>2</sub>
Eastern	6789	na	91	91	91	91	91	91	91
Midland	1263	96	95	95	95	95	95	95	95
Mid Western	1390	96	95	95	95	95	95	95	95
North Eastern	2060	na	92	92	92	92	92	90	90
North Western	891	96	95	95	95	95	95	95	95
South Eastern	1953	97	92	92	92	92	92	91	92
Southern	2554	94	92	92	92	92	91	88	88
Western	1669	5	91	91	91	91	91	90	91
Ireland	18569	80	92	92	92	92	92	91	91

na = not available at this time

\*As the denominator/number in cohort varied slightly according to vaccine, most commonly used number is presented here. †Number in cohort for BCG is 9,770

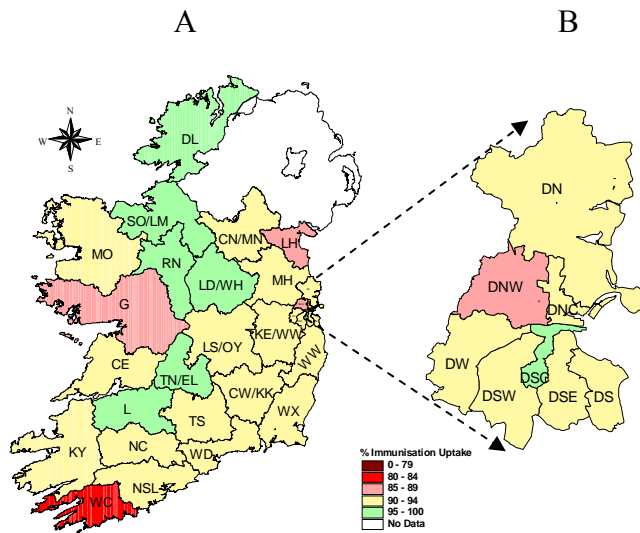


**Figure 1.** National quarterly immunisation uptake rates at 12 months

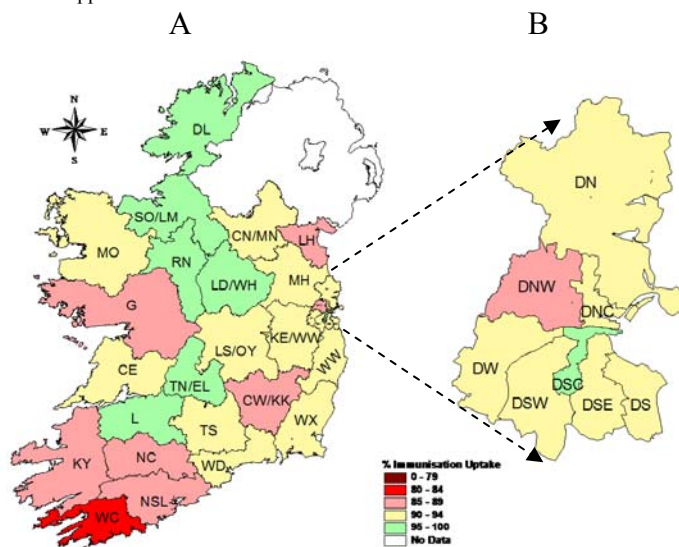
Since T<sub>3</sub> uptake identical to D<sub>3</sub> uptake only D<sub>3</sub> uptake figures presented. The Q3-2008 MenC<sub>3</sub> uptake figure is based on data from six of the eight HSE Areas. The Q1-2009 HSE-Eastern Area D<sub>3</sub>, P<sub>3</sub>, T<sub>3</sub>, Polio<sub>3</sub> and MMR<sub>1</sub> uptake figures exclude those born on the 31/03/2007. The Q3-2009 figures are incomplete as two HSE Areas were unable to provide data, two additional areas were unable to provide MenC<sub>2</sub> data and one additional area was unable to provide PCV<sub>2</sub> data. The Q4-2009 figures are incomplete as three HSE Areas were unable to provide data. The Q1-2010 figures are incomplete as two HSE Areas were unable to provide data and three were unable to provide MenC<sub>2</sub> data. The Q2-2010 figures are incomplete as two HSE Areas were unable to provide data. The Q4-2010 figures are incomplete as one HSE Area was unable to provide data.

### Internationally

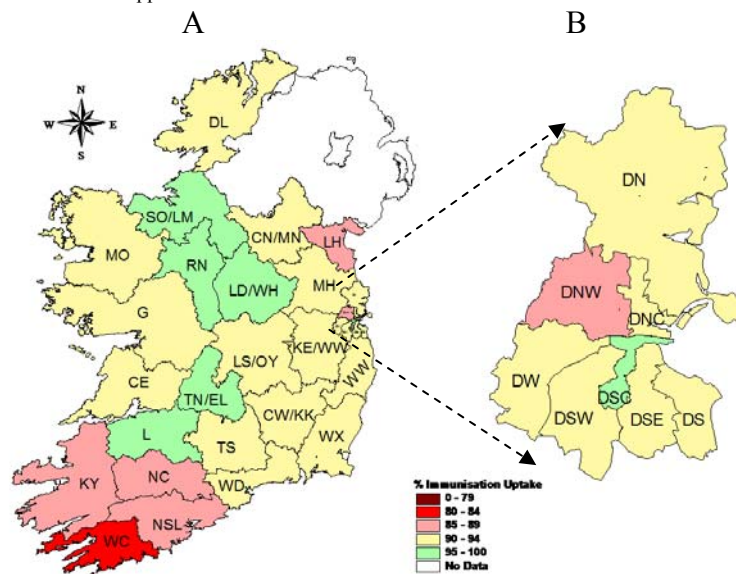
Vaccination coverage statistics for D<sub>3</sub>, P<sub>3</sub>, T<sub>3</sub>, Hib<sub>3</sub> and Polio<sub>3</sub> for children 12 months of age in Quarter 2-2012 were 94.6% in England, 96.0% in Wales, 97.3% in Northern Ireland and 97.3% in Scotland.<sup>1</sup> MenC<sub>2</sub> uptake was 93.9% in England, 95.9% in Wales, 97.3% in Northern Ireland and 97.1% in Scotland.<sup>1</sup> PCV<sub>2</sub> uptake was 94.3% in England, 95.5% in Wales, 97.5% in Northern Ireland and 97.5% in Scotland.<sup>1</sup>



**Figure 2.** D<sub>3</sub> immunisation uptake rates (%) by LHO, in those 12 months of age in Quarter 2-2012, in (A) Ireland and (B) Dublin. Please see Appendix 3 to translate LHO codes.



**Figure 3.** MenC<sub>2</sub> immunisation uptake rates (%) by LHO, in those 12 months of age in Quarter 2-2012, in (A) Ireland and (B) Dublin. Please see Appendix 3 to translate LHO codes.



**Figure 4.** PCV<sub>2</sub> immunisation uptake rates (%) by LHO, in those 12 months of age in Quarter 2-2012, in (A) Ireland and (B) Dublin. Please see Appendix 3 to translate LHO codes.

## Immunisation uptake at 24 months

### National and HSE Area uptake

Immunisation uptake rates in children 24 months of age in Q2-2012 are presented (Table 3). National uptake rates were 95% for D<sub>3</sub>, P<sub>3</sub>, T<sub>3</sub>, Hib<sub>3</sub>, Polio<sub>3</sub> and HepB<sub>3</sub>, 92% for MMR<sub>1</sub>, 90% for PCV<sub>3</sub>, 89% for Hib<sub>b</sub> and 85% for MenC<sub>3</sub>. Among the HSE Areas the uptake of D<sub>3</sub>, P<sub>3</sub>, T<sub>3</sub>, Hib<sub>3</sub>, Polio<sub>3</sub> and HepB<sub>3</sub> ranged from 94-98%, MMR<sub>1</sub> ranged from 90-96%, PCV<sub>3</sub> ranged from 88-93%, Hib<sub>b</sub> ranged from 85-98% and MenC<sub>3</sub> ranged from 82-91%. The target uptake of ≥95% was reached for D<sub>3</sub>, P<sub>3</sub>, T<sub>3</sub>, Hib<sub>3</sub>, HepB<sub>3</sub> and Polio<sub>3</sub> in five of the eight HSE Areas, for MMR<sub>1</sub> in two HSE Areas and for Hib<sub>b</sub> in one HSE Area. Six of the eight HSE Areas were able to provide uptake data on MenC<sub>b</sub> (one dose of MenC at ≥12 months of age) and PCV<sub>b</sub> (one dose of PCV at ≥12 months of age) in Quarter 2 2012. These Areas cover approximately 80% of the national birth cohort. Where data were available, national uptake was 89% for MenC<sub>b</sub> and 93% for PCV<sub>b</sub>. The target uptake of ≥95% was reached for PCV<sub>b</sub> in two HSE Areas and for MenC<sub>b</sub> in one HSE Area.

### Trends

Figure 5 presents the national uptake rates at 24 months for each vaccine from Q1-1999 to Q2-2012. Compared to the previous quarter, national uptake rates in Q2 2012 for: MMR<sub>1</sub> and PCV<sub>3</sub> decreased by 1%, Hib<sub>b</sub> increased by 1% while D<sub>3</sub>, P<sub>3</sub>, T<sub>3</sub>, Hib<sub>3</sub>, Polio<sub>3</sub>, HepB<sub>3</sub>, MenC<sub>b</sub>, MenC<sub>3</sub> and PCV<sub>b</sub> were unchanged.

Hib<sub>b</sub> uptake rates in Q2-2012, compared to the previous quarter: increased in the HSE-Western Area (by 8%), in the HSE-Mid Western (by 2%) and the HSE-Southern (by 1%) Areas; decreased in the HSE-North Eastern (by 1%) and HSE-South Eastern (by 1%) Areas; and were unchanged in the HSE- Eastern, HSE-Midlands and HSE-North Western Areas.

MenC<sub>3</sub> uptake rates in Q2-2012, compared to the previous quarter: increased in the HSE-Mid Western (by 2%) and HSE-Southern (by 1%) Areas, decreased in the HSE-Eastern, HSE-Midland (by 1%), and HSE-South Eastern (by 2%) Areas and were unchanged in the remaining Areas.

### LHO uptake

Immunisation uptake rates in children 24 months of age in Q2-2012 are presented by LHO in Appendix 2. D<sub>3</sub>, Hib<sub>b</sub>, MenC<sub>3</sub>, MenC<sub>b</sub>, PCV<sub>3</sub>, PCV<sub>b</sub> and MMR<sub>1</sub> immunisation uptake rates are mapped by LHO in figures 6-12.

Among the LHOs, uptake of D<sub>3</sub>, T<sub>3</sub>, P<sub>3</sub>, Polio<sub>3</sub> and HepB<sub>3</sub> ranged from 90-98%, Hib<sub>3</sub> ranged from 89-98%, MMR<sub>1</sub> ranged from 81-96%, PCV<sub>3</sub> ranged from 79-97%, PCV<sub>b</sub> ranged from 81-97%, MenC<sub>3</sub> ranged from 65-94% MenC<sub>b</sub> ranged from 68-96% and Hib<sub>b</sub> ranged from 68-98%.

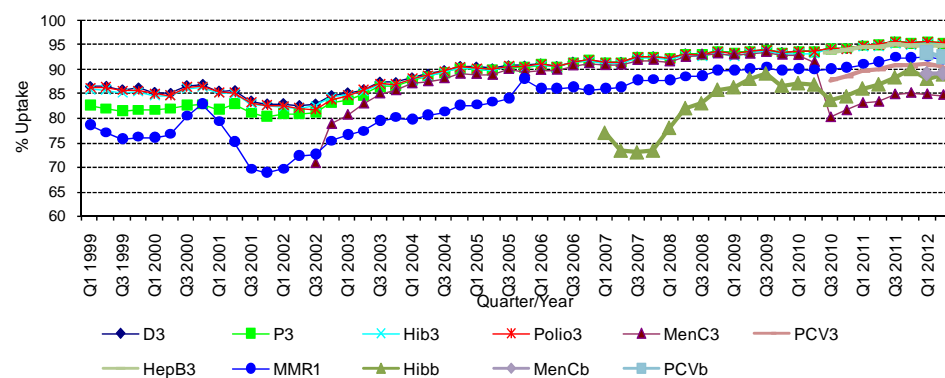
The target uptake of ≥95% was reached in 23 LHOs for D<sub>3</sub>, P<sub>3</sub>, T<sub>3</sub>, and Polio<sub>3</sub>, 22 LHOs for Hib<sub>3</sub> and HepB<sub>3</sub>, 9 for PCV<sub>b</sub>, 7 for MMR<sub>1</sub>, 6 for Hib<sub>b</sub>, 4 for MenC<sub>b</sub>, 1 for PCV<sub>3</sub> the target uptake of ≥95% was not reached in any LHO for MenC<sub>3</sub>.

All LHOs had ≥90% uptake of D<sub>3</sub>, P<sub>3</sub>, T<sub>3</sub>, Polio<sub>3</sub> and HepB<sub>3</sub>, 30 had ≥90% uptake of Hib<sub>3</sub>, 26 had ≥90% uptake of MMR<sub>1</sub>, 23 had ≥90% uptake of PCV<sub>b</sub>, 22 had ≥90% uptake of PCV<sub>3</sub>, 15 had ≥90% of Hib<sub>b</sub>, 13 had ≥90% uptake of MenC<sub>b</sub> and five had ≥90% uptake of MenC<sub>3</sub>.

**Table 3.** Immunisation uptake (%) at 24 months in cohort born 01/04/2010–30/06/2010

HSE Area	No. in Cohort*	D <sub>3</sub> /T <sub>3</sub> /P <sub>3</sub> /Polio <sub>3</sub>	Hib <sub>b</sub>	Hib <sub>3</sub> /HepB <sub>3</sub>	MenC <sub>3</sub>	MenC <sub>b</sub>	PCV <sub>3</sub>	PCV <sub>b</sub>	MMR <sub>1</sub>
Eastern	6823	94	87	94	83	87	88	91	91
Midland	1238	98	98	98	91	96	93	95	96
Mid Western	1430	94	90	94	86	90	92	93	93
North Eastern	2024	96	86	96	84	na	91	na	91
North Western	1004	98	92	97	87	93	92	97	95
South Eastern	1967	96	94	96	86	92	92	94	94
Southern	2502	96	85	95	86	89	91	92	93
Western	1669	94	90	94	82	na	91	na	90
<b>Ireland</b>	<b>18657</b>	<b>95</b>	<b>89</b>	<b>95</b>	<b>85</b>	<b>89</b>	<b>90</b>	<b>93</b>	<b>92</b>

\* As the denominator/number in cohort varied slightly according to vaccine, most commonly used number is presented here.



**Figure 5.** National quarterly immunisation uptake rates at 24 months

**Notes:** The Q4-2005 MMR<sub>1</sub> figure is based on data from seven of the eight HSE-Areas. The Q1-2006 MMR<sub>1</sub> figure includes the HSE-Eastern Area figure that is an estimate only. The Q1-2007, Q3-2007, Q2-2008 and Q3-2008 Hib<sub>b</sub> figures are based on data from seven of the eight HSE Areas. In Q1-2008 the HSE-SE changed their Hib<sub>b</sub> data extraction method compared to previous quarters; in Q1-2008 the uptake of Hib<sub>b</sub> in the HSE-SE was 83% compared to 53% in Q4-2007. The Q3-2008 MenC<sub>3</sub> figure is based on data from six of the eight HSE Areas. The Q1-2009 HSE-Eastern Area Hib<sub>b</sub> uptake figures exclude uptake figures from Dublin North. The Q4-2009 figures are based on data from seven of the eight HSE Areas. The Q2-2009 HSE-Eastern Area Hib<sub>b</sub> uptake figures exclude uptake figures from Dublin North. The Q1-2010 figures are based on data from six of the eight HSE Areas. The Q4-2009 Hib<sub>b</sub> figures also exclude uptake figures from Dublin North. The Q1-2010 figures are based on data from seven of the eight HSE Areas. The Q2-2010 and Q4-2010 figures are based on data from seven of the eight HSE Areas.

### Internationally

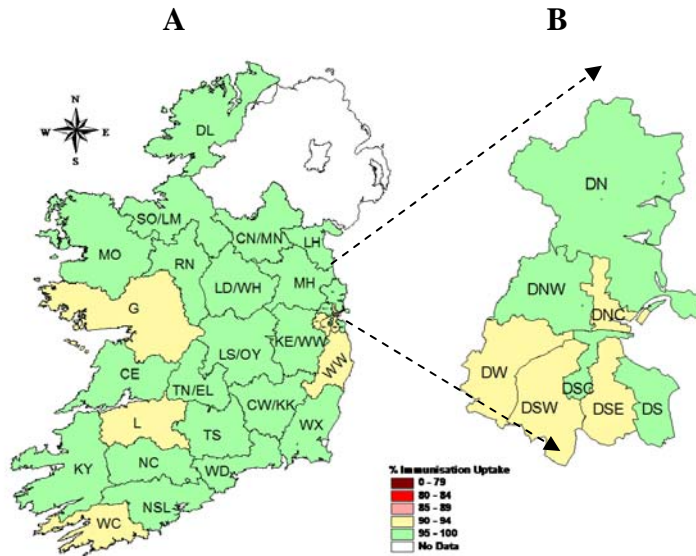
In Q2-2012, vaccination coverage statistics at 24 months for D<sub>3</sub>, P<sub>3</sub>, T<sub>3</sub>, Hib<sub>3</sub> and Polio<sub>3</sub> were 96.3% in England, 97.8% in Wales, 98.6% in Northern Ireland and 98.2% in Scotland.<sup>1</sup> MenC<sub>2</sub> uptake was 95.2% in England, 96.6% in Wales, 97.1% in Northern Ireland and 96.4% in Scotland.<sup>1</sup> PCV booster was 92.6% in England, 95.4% in Wales, 95.8% in Northern Ireland and 95.7% in Scotland. Hib/MenC booster was 92.8% in England, 94.5% in Wales, 95.7% in Northern Ireland and 95.9% in Scotland.<sup>1</sup> MMR<sub>1</sub> uptake was 92.3% in England, 94.5% in Wales, 95.3% in Northern Ireland and 94.9% in Scotland.<sup>1</sup>

### Conclusions

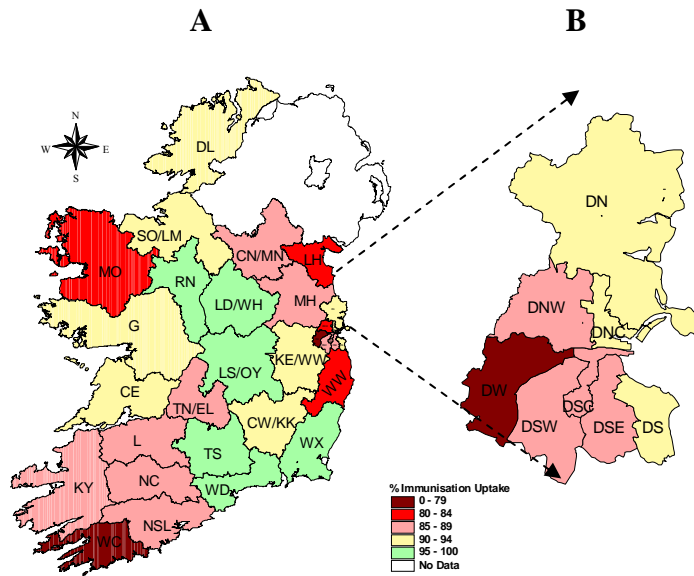
In Quarter 2-2012, national uptake rates at 24 months for D<sub>3</sub>, P<sub>3</sub>, T<sub>3</sub>, Hib<sub>3</sub>, Polio<sub>3</sub> and HepB<sub>3</sub> reached the target of ≥95%. In Quarter 2-2012, compared to the previous quarter, Hib<sub>b</sub> increased by 1% and MMR<sub>1</sub> and PCV<sub>3</sub> uptake decreased by one percent. Since the introduction of the new childhood schedule in September 2008 MenC<sub>3</sub> and Hib<sub>b</sub> uptake are considerably lower than the uptake of the other recommended vaccines both of which should be given at 13 months of age suggesting that parents are less likely to get the necessary vaccines at this age.

### Acknowledgements

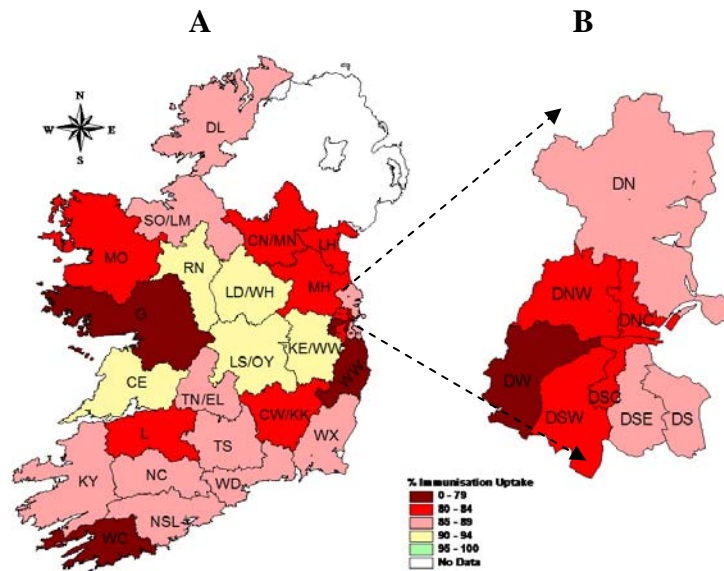
HPSC would like to thank the HSE Areas for providing data and special thanks to the Specialists in Public Health Medicine, Immunisation Co-ordinators, Surveillance Scientists and Systems Analysts for their assistance.



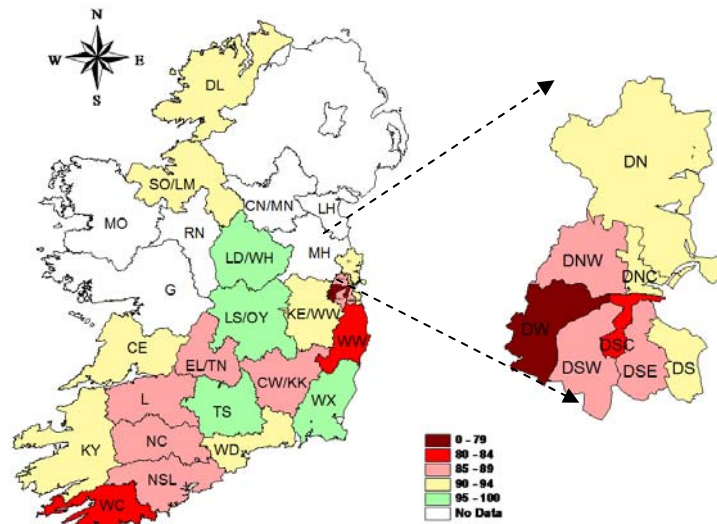
**Figure 6.** D<sub>3</sub> immunisation uptake rates (%) by LHO, in those 24 months of age in Quarter 2-2012, in (A) Ireland and (B) Dublin. Please see Appendix 3 to translate LHO codes.



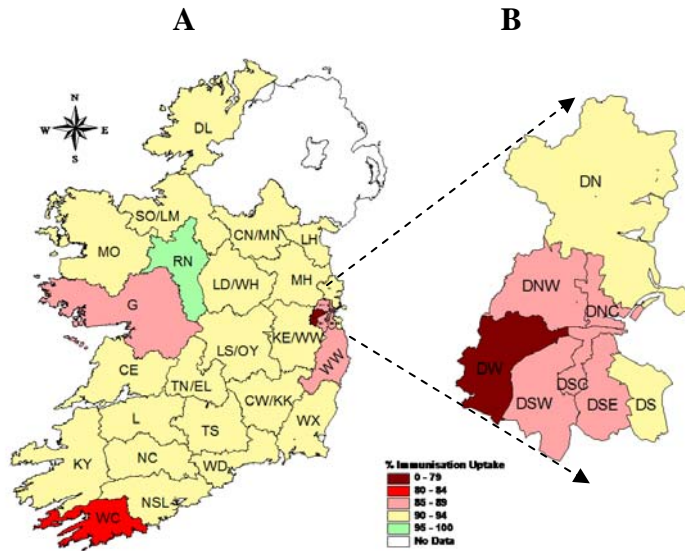
**Figure 7.** Hib<sub>6</sub> immunisation uptake rates (%) by LHO, in those 24 months of age in Quarter 2-2012, in (A) Ireland and (B) Dublin. Please see Appendix 3 to translate LHO codes.



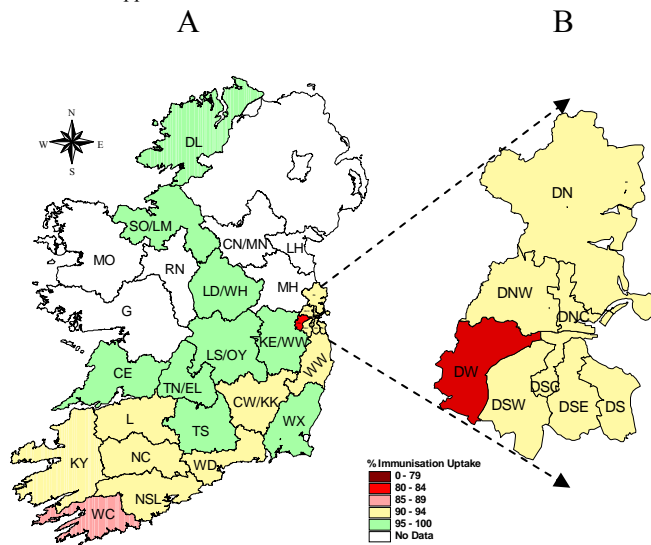
**Figure 8.** MenC<sub>3</sub> immunisation uptake rates (%) by LHO, in those 24 months of age in Quarter 2-2012, in (A) Ireland and (B) Dublin. Please see Appendix 3 to translate LHO codes.



**Figure 9.** MenC<sub>b</sub> immunisation uptake rates (%) by LHO, in those 24 months of age in Quarter 2-2012, in (A) Ireland and (B) Dublin. Please see Appendix 3 to translate LHO codes.

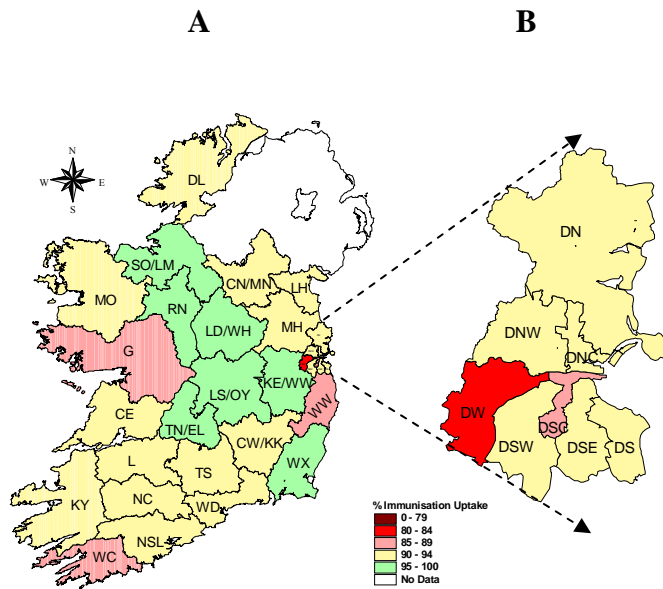


**Figure 10.** PCV<sub>3</sub> immunisation uptake rates (%) by LHO, in those 24 months of age in Quarter 2-2012, in (A) Ireland and (B) Dublin. Please see Appendix 3 to translate LHO codes.



**Figure 11.** PCV<sub>6</sub> immunisation uptake rates (%) by LHO, in those 24 months of age in Quarter 2-2012, in (A) Ireland and (B) Dublin. Please see Appendix 3 to translate LHO codes.





**Figure 12.** MMR<sub>1</sub> immunisation uptake rates (%) by LHO, in those 24 months of age in Quarter 2-2012, in (A) Ireland and (B) Dublin. Please see Appendix 3 to translate LHO codes.

## Appendix 1

Immunisation Uptake at 12 Months in Cohort Born 01/04/2011-30/06/2011											
HSE Area	LHO/HSE Area	No. in cohort for BCG	No. in cohort for other vaccines*	Immunisation Uptake (%)							
				BCG	D <sub>3</sub> T <sub>3</sub>	P <sub>3</sub>	Hib <sub>3</sub>	Polio <sub>3</sub>	HepB <sub>3</sub>	MenC <sub>2</sub>	PCV <sub>2</sub>
Eastern	Dublin South	na	433	na	93	93	93	93	93	93	93
	Dublin South East	na	459	na	91	91	91	91	91	91	91
	Dublin South City	na	444	na	96	96	96	96	96	95	96
	Dublin South West	na	690	na	93	93	93	93	92	92	93
	Dublin West	na	703	na	90	90	90	90	90	90	90
	Dublin North West	na	982	na	86	86	86	86	86	86	86
	Dublin North Central	na	453	na	94	94	94	94	94	93	94
	Dublin North	na	1116	na	91	91	91	91	91	91	91
	Kildare/West Wicklow	na	1050	na	92	92	92	92	92	91	92
	Wicklow	na	459	na	90	90	90	90	90	90	90
<b>HSE-E Total</b>	<b>na</b>	<b>6789</b>	<b>na</b>	<b>91</b>	<b>91</b>	<b>91</b>	<b>91</b>	<b>91</b>	<b>91</b>	<b>91</b>	
Midland	Laois/Offaly	742	742	96	94	94	94	94	94	94	94
	Longford/Westmeath	521	521	95	96	96	96	96	96	96	96
	<b>HSE-M Total</b>	<b>1263</b>	<b>1263</b>	<b>96</b>	<b>95</b>	<b>95</b>	<b>95</b>	<b>95</b>	<b>95</b>	<b>95</b>	<b>95</b>
Mid Western	Clare	433	437	96	93	93	93	93	93	92	93
	Limerick	470	472	98	96	96	96	96	96	96	95
	Tipperary NR/East Limerick	485	481	95	95	95	95	95	95	96	96
	<b>HSE-MW Total</b>	<b>1388</b>	<b>1390</b>	<b>96</b>	<b>95</b>	<b>95</b>	<b>95</b>	<b>95</b>	<b>95</b>	<b>95</b>	<b>95</b>
North Eastern	Cavan/Monaghan	na	569	na	94	94	94	94	94	92	92
	Louth	na	530	na	88	88	88	88	88	86	85
	Meath	na	961	na	92	92	92	92	92	91	91
	<b>HSE-NE Total</b>	<b>na</b>	<b>2060</b>	<b>na</b>	<b>92</b>	<b>92</b>	<b>92</b>	<b>92</b>	<b>92</b>	<b>90</b>	<b>90</b>
North Western	Donegal	578	578	96	95	95	95	95	94	95	94
	Sligo/Leitrim	313	313	97	95	95	95	95	95	95	95
	<b>HSE-NW Total</b>	<b>891</b>	<b>891</b>	<b>96</b>	<b>95</b>	<b>95</b>	<b>95</b>	<b>95</b>	<b>95</b>	<b>95</b>	<b>95</b>
South Eastern	Carlow/Kilkenny	521	521	98	90	90	90	90	90	89	91
	South Tipperary	398	398	98	94	94	94	94	94	93	93
	Waterford	476	476	96	93	93	93	93	93	93	94
	Wexford	558	558	94	91	91	91	91	90	90	91
	<b>HSE-SE Total</b>	<b>1953</b>	<b>1953</b>	<b>97</b>	<b>92</b>	<b>92</b>	<b>92</b>	<b>92</b>	<b>92</b>	<b>91</b>	<b>92</b>
Southern	North Cork	389	384	92	91	91	91	91	91	89	89
	North South Lee	1512	1477	95	93	93	93	93	92	89	89
	West Cork	184	182	93	84	84	83	84	84	82	83
	Kerry	521	511	94	91	91	91	91	91	87	86
	<b>HSE-S Total</b>	<b>2606</b>	<b>2554</b>	<b>94</b>	<b>92</b>	<b>92</b>	<b>92</b>	<b>92</b>	<b>92</b>	<b>91</b>	<b>88</b>
Western	Galway	na	993	na	89	89	89	89	89	89	90
	Mayo	na	438	na	91	91	91	91	91	90	91
	Roscommon	na	238	na	96	96	96	96	96	95	97
	<b>HSE-W Total</b>	<b>1669</b>	<b>1669</b>	<b>5</b>	<b>91</b>	<b>91</b>	<b>91</b>	<b>91</b>	<b>91</b>	<b>90</b>	<b>91</b>
<b>Ireland</b>	<b>9770</b>	<b>18569</b>	<b>80</b>	<b>92</b>	<b>92</b>	<b>92</b>	<b>92</b>	<b>92</b>	<b>91</b>	<b>91</b>	

na=not available

\* As the denominator/number in cohort varied slightly according to vaccine, most commonly used number is presented here.

Please note while North Lee and South Lee are two separate LHOs their combined immunisation uptake data are reported here.

## Appendix 2

Immunisation uptake (%) at 24 months of age in cohort born 01/04/2010-30/06/2010													
HSE Area	LHO/HSE Area	No. in cohort*	Immunisation Uptake (%)										
			D <sub>3</sub> T <sub>3</sub>	P <sub>3</sub>	Hib <sub>3</sub>	Hib <sub>b</sub>	Polio <sub>3</sub>	HepB <sub>3</sub>	MenC <sub>3</sub>	MenC <sub>b</sub>	PCV <sub>3</sub>	PCV <sub>b</sub>	MMR <sub>1</sub>
Eastern	Dublin South	438	95	95	95	90	95	95	87	90	92	93	92
	Dublin South East	414	90	90	90	88	90	90	86	87	89	90	90
	Dublin South City	483	96	96	96	85	96	95	81	84	87	90	89
	Dublin South West	692	94	94	94	89	94	94	82	89	88	93	92
	Dublin West	735	90	90	90	68	90	90	65	68	79	81	81
	Dublin North West	974	95	95	95	87	95	95	83	87	89	91	91
	Dublin North Central	436	94	94	94	90	94	94	84	90	87	92	92
	Dublin North	1053	95	95	95	91	95	95	87	91	91	93	93
	Kildare/West Wicklow	1077	96	96	96	93	96	96	90	93	92	95	95
	Wicklow	521	94	94	94	83	94	94	79	83	87	90	89
<b>HSE-E Total</b>		<b>6823</b>	<b>94</b>	<b>94</b>	<b>94</b>	<b>87</b>	<b>94</b>	<b>94</b>	<b>83</b>	<b>87</b>	<b>88</b>	<b>91</b>	<b>91</b>
Midland	Laois/Offaly	706	98	98	98	98	98	98	91	96	93	95	96
	Longford/Westmeath	532	97	97	97	97	97	97	91	95	93	95	96
	<b>HSE-M Total</b>	<b>1238</b>	<b>98</b>	<b>98</b>	<b>98</b>	<b>98</b>	<b>98</b>	<b>98</b>	<b>91</b>	<b>96</b>	<b>93</b>	<b>95</b>	<b>96</b>
Mid Western	Clare	422	95	95	95	94	95	95	90	94	93	95	94
	Limerick	510	92	92	92	88	92	92	84	88	90	90	90
	Tipperary NR/East Limeric	498	96	96	96	89	96	96	86	89	93	95	95
	<b>HSE-MW Total</b>	<b>1430</b>	<b>94</b>	<b>94</b>	<b>94</b>	<b>90</b>	<b>94</b>	<b>94</b>	<b>86</b>	<b>90</b>	<b>92</b>	<b>93</b>	<b>93</b>
North Eastern	Cavan/Monaghan	557	96	96	96	88	96	96	84	na	92	na	93
	Louth	524	95	95	95	84	95	95	82	na	90	na	91
	Meath	943	96	96	96	87	96	96	84	na	91	na	90
	<b>HSE-NE Total</b>	<b>2024</b>	<b>96</b>	<b>96</b>	<b>96</b>	<b>86</b>	<b>96</b>	<b>96</b>	<b>84</b>	<b>na</b>	<b>91</b>	<b>na</b>	<b>91</b>
North Western	Donegal	607	98	98	98	92	98	97	87	93	93	97	94
	Sligo/Leitrim	397	97	97	96	92	97	97	87	92	91	96	96
	<b>HSE-NW Total</b>	<b>1004</b>	<b>98</b>	<b>98</b>	<b>97</b>	<b>92</b>	<b>98</b>	<b>97</b>	<b>87</b>	<b>93</b>	<b>92</b>	<b>97</b>	<b>95</b>
South Eastern	Carlow/Kilkenny	526	95	95	95	90	95	95	84	89	90	92	94
	South Tipperary	370	98	98	98	97	98	98	88	95	94	96	94
	Waterford	510	96	96	96	95	96	96	86	92	94	94	94
	Wexford	561	97	97	97	96	97	97	89	95	93	95	95
	<b>HSE-SE Total</b>	<b>1967</b>	<b>96</b>	<b>96</b>	<b>96</b>	<b>94</b>	<b>96</b>	<b>96</b>	<b>86</b>	<b>92</b>	<b>92</b>	<b>94</b>	<b>94</b>
Southern	North Cork	375	95	95	94	85	95	93	85	87	90	90	91
	North South Lee	1465	97	97	96	85	97	96	87	89	92	94	94
	West Cork	195	90	90	89	73	90	91	74	84	81	87	86
	Kerry	467	97	97	96	88	97	95	89	93	91	93	93
	<b>HSE-S Total</b>	<b>2502</b>	<b>96</b>	<b>96</b>	<b>95</b>	<b>85</b>	<b>96</b>	<b>95</b>	<b>86</b>	<b>89</b>	<b>91</b>	<b>92</b>	<b>93</b>
Western	Galway	1036	93	93	93	93	93	93	79	na	89	na	89
	Mayo	396	96	96	96	81	96	96	82	na	91	na	91
	Roscommon	237	97	97	97	95	97	97	94	na	97	na	95
	<b>HSE-W Total</b>	<b>1669</b>	<b>94</b>	<b>94</b>	<b>94</b>	<b>90</b>	<b>94</b>	<b>94</b>	<b>82</b>	<b>na</b>	<b>91</b>	<b>na</b>	<b>90</b>
<b>Ireland</b>		<b>18657</b>	<b>95</b>	<b>95</b>	<b>95</b>	<b>89</b>	<b>95</b>	<b>95</b>	<b>85</b>	<b>89</b>	<b>90</b>	<b>93</b>	<b>92</b>

na=not available

\*As the denominator/number in cohort varied slightly according to vaccine. The most commonly used number is reported here.

Please note while North Lee and South Lee are two separate LHOs their combined immunisation uptake data are reported here.

### Appendix 3

Local Health Office (LHO) Abbreviations (used in maps in this report)	Local Health Office (LHO)
CE	Clare
CN/MN	Cavan/Monaghan
CW/KK	Carlow/Kilkenny
DL	Donegal
DN	Dublin North
DNC	Dublin North Central
DNW	Dublin North West
DS	Dublin South
DSC	Dublin South City
DSE	Dublin South East
DSW	Dublin South West
DW	Dublin West
G	Galway
KE/WW	Kildare/West Wicklow
KY	Kerry
L	Limerick
LD/WD	Longford/Westmeath
LH	Louth
LS/OY	Laois/Offaly
MH	Meath
MO	Mayo
NC	North Cork
NSL*	North South Lee*
RN	Roscommon
SO/LM	Sligo/Leitrim
TN/EL	Tipperary North /East Limerick
TS	South Tipperary
WC	West Cork
WD	Waterford
WX	Wexford
WW	Wicklow

\*Please note while North Lee and South Lee are two separate LHOs their combined immunisation uptake data are reported here