

Summary

Children 12 months of age in Quarter 4-2011

- **National** immunisation uptake rates were 90% for D₃, P₃, T₃, Hib₃, Polio₃, HepB₃, MenC₂ and PCV₂. Compared to Q3-2011, national uptake rates in Q4-2011 for D₃, P₃, T₃, Hib₃, Polio₃ and HepB₃ decreased by 1% while MenC₂ and PCV₂ were unchanged.
- Among the **HSE Areas** the uptake rates for D₃, P₃, T₃, Hib₃, Polio₃ and HepB₃ ranged from 87% to 94% and MenC₂ and PCV₂ ranged from 86% to 94%.
- The target uptake rate of $\geq 95\%$ was reached in Dublin South City, Dublin South West, Longford/Westmeath, Waterford and Roscommon for D₃, P₃, T₃, Hib₃, Polio₃, HepB₃, MenC₂ and PCV₂; and in Tipperary NR/East Limerick for D₃, P₃, T₃, Hib₃, Polio₃, HepB₃ and PCV₂.

Children 24 months of age in Quarter 4-2011

- In Quarter 4-2011, **national** uptake rates were 95% for D₃, P₃, T₃, Hib₃, Polio₃ and HepB₃, 92% for MMR₁, 91% for PCV₃, 90% for Hib_b and 85% for MenC₃.

Since September 1st 2008 the new childhood immunisation schedule has been implemented for children born on or after July 1st 2008 (table 1). A change in timing of the meningococcal serogroup C vaccines was one of the changes to the immunisation schedule in 2008. Since the introduction of the new childhood schedule MenC₃ uptake is considerably lower than the uptake of the other recommended vaccines i.e. fewer children are receiving their meningococcal serogroup C vaccinations in comparison to other vaccinations.

Compared to Q3-2011, national uptake rates in Q4-2011 for Hib_b increased by 2%; D₃, P₃, T₃, Polio₃ and MMR₁ decreased by 1%; while Hib₃, HepB₃, MenC₃ and PCV₃ were unchanged.

- The target uptake of $\geq 95\%$ was reached for D₃, P₃, T₃, Hib₃, Polio₃ and HepB₃ in six HSE Areas, for Hib_b and MMR₁ in two HSE Areas and for PCV₃ in one HSE Area.
- The target uptake of $\geq 95\%$ was reached in 21 LHOs for D₃, P₃, T₃ and Polio₃, 20 LHOs for Hib₃, 20 LHOs for HepB₃, 10 for Hib_b, 7 for MMR₁, 3 for PCV₃ and 1 for MenC₃.

Introduction

Since September 1st 2008, the childhood immunisation schedule outlined in table 1 has been implemented for children born on or after 1st July 2008.

Compared to the previous schedule (table 1), the changes to the primary schedule for children born on or after 1st July 2008 include;
 Introduction of a hepatitis B vaccine (as part of a 6 in 1 vaccine) given at 2, 4 and 6 months of age
 Introduction of pneumococcal conjugate vaccine given at 2, 6 and 12 months of age
 Change in timing of meningococcal serogroup C conjugate vaccination, now given at 4, 6 and 13 months of age
 Change in timing of the *Haemophilus influenzae* type b booster vaccination, now given at 13 months of age.

Please see www.immunisation.ie for complete information on the Irish childhood immunisation schedule.

The immunisation uptake statistics presented in this report relate to children 12 and 24 months of age in Quarter 4-2011.

The immunisation uptake rates presented in this report for children at 12 months of age in Quarter 4-2011 are children born between 01/10/2010 and 31/12/2010 and who have received three doses of vaccines against diphtheria (D₃), pertussis (P₃), tetanus (T₃), *Haemophilus influenzae* type b (Hib₃), polio (Polio₃), hepatitis B (HepB₃), two doses of meningococcal serogroup C conjugate vaccine (MenC₂), two doses of pneumococcal conjugate vaccine (PCV₂) and one dose of BCG vaccine.

The immunisation uptake rates presented in this report for children at 24 months of age in Quarter 4-2011 are children born between 01/10/2009 and 31/12/2009 and who have received three doses of vaccines against diphtheria (D₃), pertussis (P₃), tetanus (T₃), *Haemophilus influenzae* type b (Hib₃), polio (Polio₃), hepatitis B (HepB₃), meningococcal group C (MenC₃) and pneumococcal conjugate vaccine (PCV₃), one booster dose of vaccine against *Haemophilus influenzae* type b given after 12 months of age (Hib_b) and one dose of vaccine against measles, mumps and rubella (MMR₁). The Quarter 4-2011 cohort of children at 24 months was therefore the sixth cohort recommended the new immunisation schedule. (Children that were 24 months of age in Quarter 3-2010 were children born between July 1st and September 30th 2008 and were therefore the first cohort recommended the new immunisation schedule.)

The national immunisation uptake statistics, based on available data, for Quarter 4-2011 are presented in this document, the uptake statistics are also presented by HSE Area and Local Health Office (LHO).

The uptake rates presented here were rounded to zero decimal place.

While there are 32 LHOs the immunisation uptake data for North Lee and South Lee are combined in this report.

Table 1. Change in Primary Childhood Immunisation Schedule (introduced on September 1st 2008)

Age	Children born before 01/07/2008	Children born on or after 01/07/2008
Birth	BCG	BCG
2 months	DTaP/Hib/IPV + MenC	DTaP/Hib/IPV/HepB + PCV
4 months	DTaP/Hib/IPV + MenC	DTaP/Hib/IPV/HepB + MenC
6 months	DTaP/Hib/IPV + MenC	DTaP/Hib/IPV/HepB + PCV + MenC
12 months	MMR + Hib	MMR + PCV
13 months	-	MenC + Hib

Please see www.immunisation.ie for complete information on the Irish childhood immunisation schedule and the immunisation guidelines for Ireland.

BCG	Bacille Calmette Guerin vaccine
DTaP	Diphtheria, Tetanus and acellular Pertussis vaccine
Hib	<i>Haemophilus influenzae</i> type b vaccine
HepB	Hepatitis B vaccine
IPV	Inactivate Polio Virus vaccine
MMR	Measles, Mumps and Rubella vaccine
MenC	Meningococcal group C vaccine
PCV	Pneumococcal Conjugate Vaccine

Immunisation uptake at 12 months

National and HSE Area uptake

Immunisation uptake rates in children 12 months of age in Q4-2011 are presented by HSE Area in table 2. National uptake rates were 90% for D₃, P₃, T₃, Hib₃, Polio₃, HepB₃, MenC₂ and PCV₂. Among the HSE Areas the uptake rates for D₃, P₃, T₃, Hib₃, Polio₃ and HepB₃ ranged from 87% to 94% and MenC₂ and PCV₂ ranged from 86% to 94%. Five HSE Areas had ≥90% uptake of these vaccines.

BCG uptake data were available for six of the eight HSE Areas in Quarter 4 2011, these areas cover approximately 53% of the national birth cohort. Where data were available, national uptake was 80% for the BCG vaccination. This is an increase of 1% compared to the previous quarter.

National & HSE Area trends

Figure 1 presents the national uptake rates at 12 months for each vaccine from Q3-2000 to Q4-2011. Compared to Q3-2011, national uptake rates in Q4-2011 for D₃, P₃, T₃, Hib₃, Polio₃ and HepB₃ decreased by 1% while MenC₂ and PCV₂ were unchanged.

In Q4-2011, compared to the previous quarter, uptake rates in the: HSE-Eastern Area decreased by 1-2% for all vaccines; HSE-Midland Area decreased by 2% except for BCG which was unchanged; HSE-Mid Western Area increased by 1% for all vaccines; HSE-North-Eastern Area decreased by 2%; HSE-North-Western Area decreased by 1-2% except for BCG which was unchanged; HSE-South Eastern Area were unchanged except BCG which decreased by 1%; HSE-Southern Area for D₃, P₃, T₃, Hib₃, Polio₃ and HepB₃ increased by 2%, MenC₂ and PCV₂ increased by 4% and BCG increased by 1%; HSE-Western area were unchanged for all vaccines.

LHO uptake

The immunisation uptake rates by LHO are shown in appendix 1. D₃, MenC₂ and PCV₂ immunisation uptake rates are mapped by LHO in figures 2-4.

Among the 15 LHOs reporting BCG data, BCG uptake ranged from 90% to 98% with 10 reporting uptake of ≥95%. BCG data were not available by LHO in the HSE-Western Area.

D₃, P₃, T₃, Hib₃, Polio₃ and HepB₃ uptake rates ranged from 70% (Dublin West) to 98% (Roscommon). MenC₂ uptake rates ranged from 71% (Dublin West) to 98% (Roscommon). PCV₂ uptake rates ranged from 71% (Dublin West) to 99% (Roscommon).

The target uptake rate of ≥95% was reached in Dublin South City, Dublin South West, Longford/Westmeath, Waterford and Roscommon for D₃, P₃, T₃, Hib₃, Polio₃, HepB₃, MenC₂ and PCV₂; and in Tipperary NR/East Limerick for D₃, P₃, T₃, Hib₃, Polio₃, HepB₃ and PCV₂.

Twenty-one LHOs had ≥90% uptake of D₃, P₃, T₃, Hib₃, Polio₃, HepB₃, MenC₂ and PCV₂.

Table 2. Immunisation uptake (%) at 12 months in cohort born 01/10/2010–31/12/2010

HSE Area	No. in cohort*	BCG	D ₃ T ₃	P ₃	Hib ₃	Polio ₃	HepB ₃	MenC ₂	PCV ₂
Eastern	7107	na	88	88	88	88	88	88	88
Midland	1250	96	94	94	94	94	94	94	94
Mid Western	1530	98	93	93	93	93	93	93	93
North Eastern	2003	na	87	87	87	87	87	86	86
North Western	937	95	92	92	92	92	92	92	93
South Eastern	2028	96	93	93	93	93	93	93	93
Southern	2666	92	91	91	91	91	90	89	88
Western	1720	4	92	92	92	92	92	92	92
Ireland	19241†	80	90	90	90	90	90	90	90

na = not available at this time

*As the denominator/number in cohort varied slightly according to vaccine, most commonly used number is presented here. †Number in cohort for BCG is 10,185

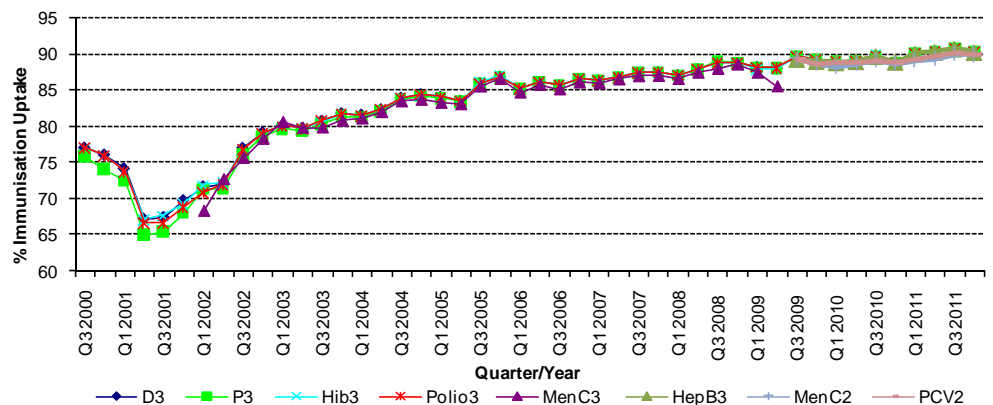


Figure 1. National quarterly immunisation uptake rates at 12 months

Since T₃ uptake identical to D₃ uptake only D₃ uptake figures presented. The Q3-2008 MenC₃ uptake figure is based on data from six of the eight HSE Areas. The Q1-2009 HSE-Eastern Area D₃, P₃, T₃, Polio₃ and MMR₁ uptake figures exclude those born on the 31/03/2007. The Q3-2009 figures are incomplete as two HSE Areas were unable to provide data, two additional areas were unable to provide MenC₂ data and one additional area was unable to provide PCV₂ data. The Q4-2009 figures are incomplete as three HSE Areas were unable to provide data. The Q1-2010 figures are incomplete as two HSE Areas were unable to provide data and three were unable to provide MenC₂ data. The Q2-2010 figures are incomplete as two HSE Areas were unable to provide data. The Q4-2010 figures are incomplete as one HSE Area was unable to provide data.

Internationally

Vaccination coverage statistics for D₃, P₃, T₃, Hib₃ and Polio₃ for children 12 months of age in Quarter 4-2011 were 94.7% in England, 96.2% in Wales, 97.5% in Northern Ireland and 97.4% in Scotland.¹ MenC₂ uptake was 94.2% in England, 96.1% in Wales, 97.3% in Northern Ireland and 97.0% in Scotland.¹ PCV₂ uptake was 94.4% in England, 95.7% in Wales, 97.6% in Northern Ireland and 97.3% in Scotland.¹

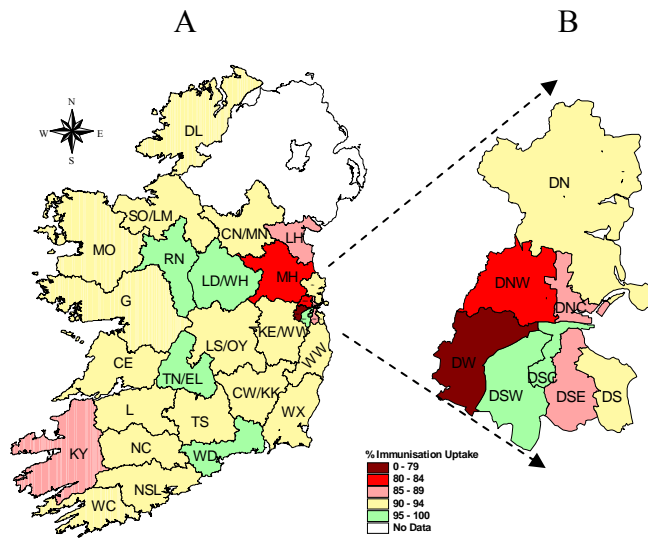


Figure 2. D₃ immunisation uptake rates (%) by LHO, in those 12 months of age in Quarter 4-2011, in (A) Ireland and (B) Dublin. Please see Appendix 3 to translate LHO codes.

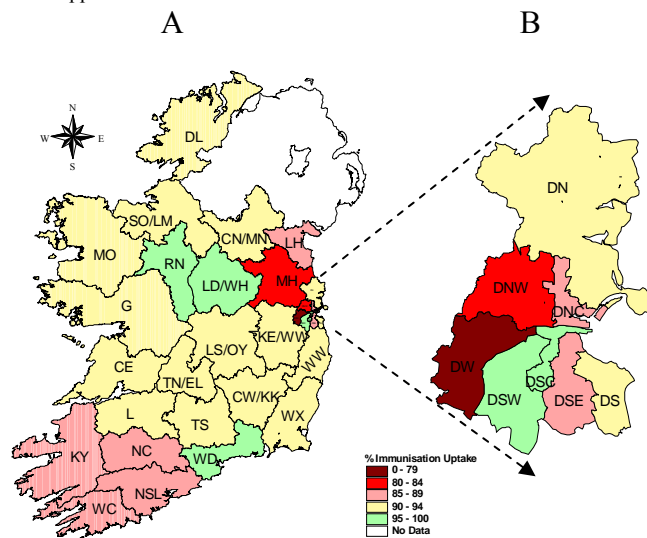


Figure 3. MenC₂ immunisation uptake rates (%) by LHO, in those 12 months of age in Quarter 4-2011, in (A) Ireland and (B) Dublin. Please see Appendix 3 to translate LHO codes.

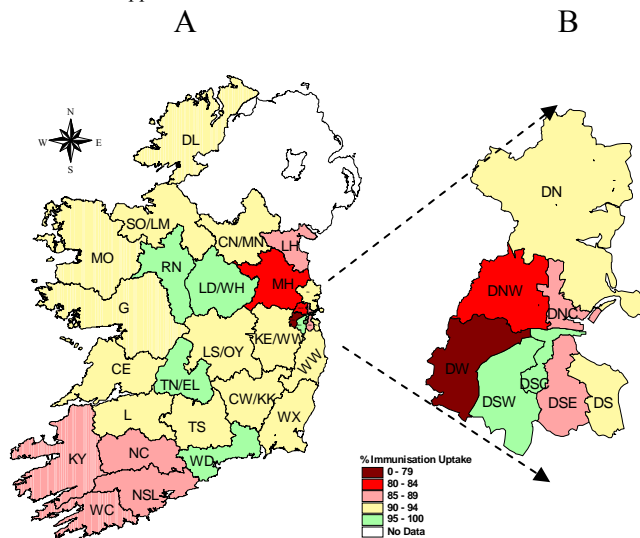


Figure 4. PCV₂ immunisation uptake rates (%) by LHO, in those 12 months of age in Quarter 4-2011, in (A) Ireland and (B) Dublin. Please see Appendix 3 to translate LHO codes.

Immunisation uptake at 24 months

National and HSE Area uptake

Since September 1st 2008 the new childhood immunisation schedule has been implemented for children born on or after 1st July 2008 (table 1). Children 24 months of age in Quarter 4-2011 were children born between 1st October and 31st December 2009 and are therefore the sixth cohort recommended the new immunisation schedule. (Children 24 months of age in Quarter 3-2010 were children born between 1st July and 30th September 2008 and were therefore the first cohort recommended the new immunisation schedule.) Immunisation uptake rates in children 24 months of age in Q4-2011 are presented (Table 3). National uptake rates were 95% for D₃, P₃, T₃, Hib₃, Polio₃ and HepB₃, 92% for MMR₁, 91% for PCV₃, 90% for Hib_b and 85% for MenC₃. Among the HSE Areas the uptake of D₃, P₃, T₃, Hib₃, Polio₃ and HepB₃ ranged from 94-98%, MMR₁ ranged from 90-97%, PCV₃ ranged from 90-95%, Hib_b ranged from 84-95% and MenC₃ ranged from 84-91%. The target uptake of $\geq 95\%$ was reached for D₃, P₃, T₃, Hib₃, Polio₃ and HepB₃ in six HSE Areas, for Hib_b in two HSE Area, for MMR₁ in two HSE Areas and for PCV₃ in one HSE Area.

Trends

Figure 5 presents the national uptake rates at 24 months for each vaccine from Q1-1999 to Q4-2011. Compared to the previous quarter, national uptake rates in Q4 2011 for: D₃, P₃, T₃, Polio₃ and MMR₁ decreased by 1%; Hib₃, HepB₃, MenC₃ and PCV₃ were unchanged; and Hib_b increased by 2%.

Hib_b uptake rates in Q4-2011, compared to the previous quarter: increased in the HSE-Eastern (by 6%), North Western (by 3%) and Western (by 1%) Areas; decreased in the HSE-Midland (by 3%), South Eastern (by 3%), Mid-Western (by 1%) and North Eastern (by 1%) Areas; and were unchanged in the HSE-Southern Area.

MenC₃ uptake rates in Q4-2011, compared to the previous quarter: increased in the HSE-Eastern (by 2%), Midland (by 1%) and North Western (by 1%) Areas; decreased in the HSE-Mid Western (by 2%) and North Eastern (by 1%) Areas; and was unchanged in the HSE-South Eastern, Southern and Western Areas.

LHO uptake

Immunisation uptake rates in children 24 months of age in Q4-2011 are presented by LHO in Appendix 2. D₃, Hib_b, MenC₃, PCV₃ and MMR₁ immunisation uptake rates are mapped by LHO in figures 6-10.

Among the LHOs, uptake of D₃, T₃, P₃, Polio₃ and HepB₃ ranged from 90-98%, Hib₃ ranged from 89-98%, MMR₁ ranged from 86-98%, PCV₃ ranged from 84-97%, MenC₃ ranged from 75-95% and Hib_b ranged from 78-98%.

The target uptake of $\geq 95\%$ was reached in 21 LHOs for D₃, P₃, T₃ and Polio₃, 20 LHOs for Hib₃, 20 LHOs for HepB₃, 10 for Hib_b, 7 for MMR₁, 3 for PCV₃ and 1 for MenC₃.

Of the LHOs, all 31 had $\geq 90\%$ uptake of D₃, P₃, T₃, Polio₃ and HepB₃, 30 had $\geq 90\%$ uptake of Hib₃, 26 had $\geq 90\%$ uptake of MMR₁, 20 had $\geq 90\%$ uptake of PCV₃, 18 had $\geq 90\%$ uptake of Hib_b and five had $\geq 90\%$ uptake of MenC₃.

Table 3. Immunisation uptake (%) at 24 months in cohort born 01/10/2009–31/12/2009

HSE Area	No. in Cohort*	D ₃ /T ₃ /P ₃ /Polio ₃	Hib ₃	Hib _b	HepB ₃	MenC ₃	PCV ₃	MMR ₁
Eastern	6840	94	94	92	94	84	90	92
Midland	1237	98	98	95	98	91	95	97
Mid Western	1535	95	95	89	95	85	92	93
North Eastern	2050	95	95	87	95	84	90	90
North Western	985	97	97	95	96	87	90	95
South Eastern	2068	95	95	93	95	88	92	94
Southern	2555	96	96	84	95	85	91	93
Western	1695	94	94	84	94	84	90	91
Ireland	18965	95	95	90	95	85	91	92

* As the denominator/number in cohort varied slightly according to vaccine, most commonly used number is presented here.

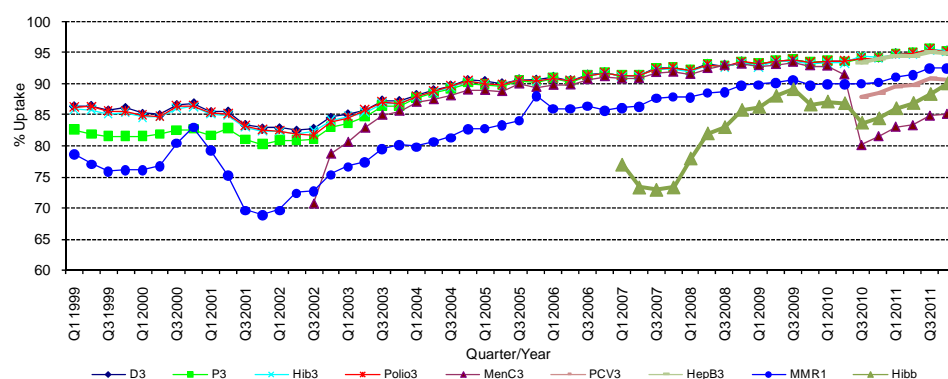


Figure 5. National quarterly immunisation uptake rates at 24 months

Notes: The Q4-2005 MMR₁ figure is based on data from seven of the eight HSE-Areas. The Q1-2006 MMR₁ figure includes the HSE-Eastern Area figure that is an estimate only. The Q1-2007, Q3-2007, Q2-2008 and Q3-2008 Hib_b figures are based on data from seven of the eight HSE Areas. In Q1-2008 the HSE-SE changed their Hib_b data extraction method compared to previous quarters; in Q1-2008 the uptake of Hib_b in the HSE-SE was 83% compared to 53% in Q4-2007. The Q3-2008 MenC₃ figure is based on data from six of the eight HSE Areas. The Q1-2009 HSE-Eastern Area D₃, P₃, T₃, Polio₃ and MMR₁ uptake figures exclude those born on the 31/03/2007. The Q2-2009 HSE-Eastern Area Hib_b uptake figures exclude uptake figures from Dublin North. The Q4-2009 figures are based on data from seven of the eight HSE Areas. The Q4-2009 Hib_b figures also exclude uptake figures from Dublin North. The Q1-2010 figures are based on data from six of the eight HSE Areas. The Q1-2010 Hib_b figures also exclude uptake figures from Dublin North. The Q2-2010 and Q4-2010 figures are based on data from seven of the eight HSE Areas.

Internationally

In Q4-2011, vaccination coverage statistics at 24 months for D₃, P₃, T₃, Hib₃ and Polio₃ were 96.3% in England, 97.4% in Wales, 98.3% in Northern Ireland and 98.1% in Scotland.¹ MenC₂ uptake was 95.2% in England, 96.3% in Wales, 96.9% in Northern Ireland and 96.3% in Scotland.¹ PCV booster was 92.0% in England, 94.0% in Wales, 94.2% in Northern Ireland and 95.0% in Scotland. Hib/MenC booster was 92.4% in England, 94.1% in Wales, 95.7% in Northern Ireland and 96.1% in Scotland.¹ MMR₁ uptake was 91.5% in England, 93.3% in Wales, 93.3% in Northern Ireland and 94.9% in Scotland.¹

Conclusions

In Quarter 4-2011, national uptake rates at 24 months for D₃, P₃, T₃, Hib₃, Polio₃ and HepB₃ reached the target of $\geq 95\%$. In Quarter 4-2011, compared to the previous quarter, Hib_b increased by 2% to 90% and MMR₁ uptake decreased by one percent to 92%. Since the introduction of the new childhood schedule in September 2008 MenC₃ uptake is considerably lower than the uptake of the other recommended vaccines i.e. fewer children are receiving their meningococcal serogroup C vaccinations in comparison to other vaccinations.

Acknowledgements

HPSC would like to thank the HSE Areas for providing data and special thanks to the Specialists in Public Health Medicine, Immunisation Co-ordinators, Surveillance Scientists and Systems Analysts for their assistance.

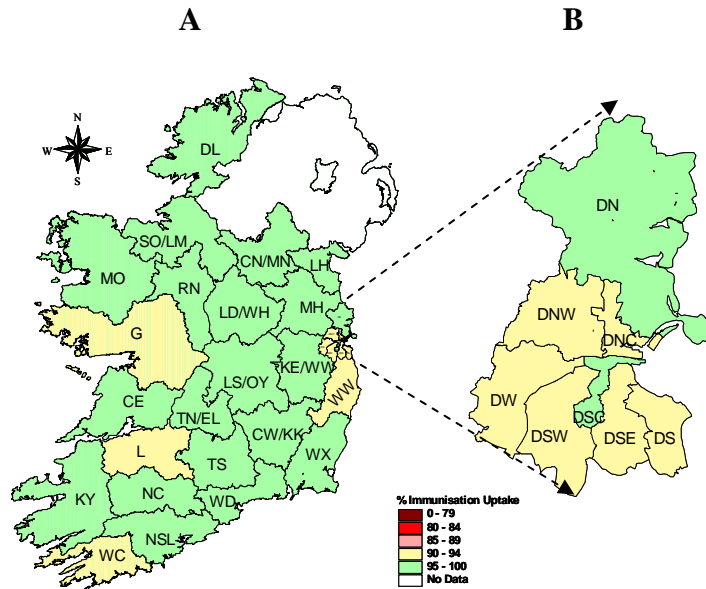


Figure 6. D₃ immunisation uptake rates (%) by LHO, in those 24 months of age in Quarter 4-2011, in (A) Ireland and (B) Dublin. Please see Appendix 3 to translate LHO codes.

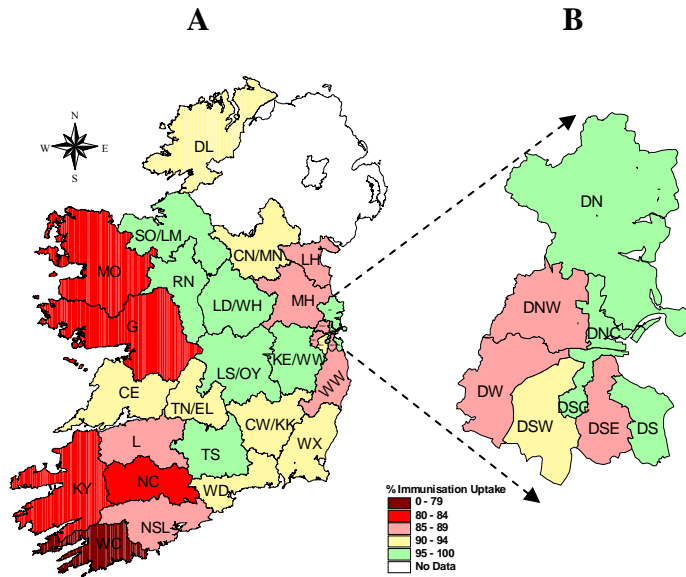


Figure 7. Hib₆ immunisation uptake rates (%) by LHO, in those 24 months of age in Quarter 4-2011, in (A) Ireland and (B) Dublin. Please see Appendix 3 to translate LHO codes.

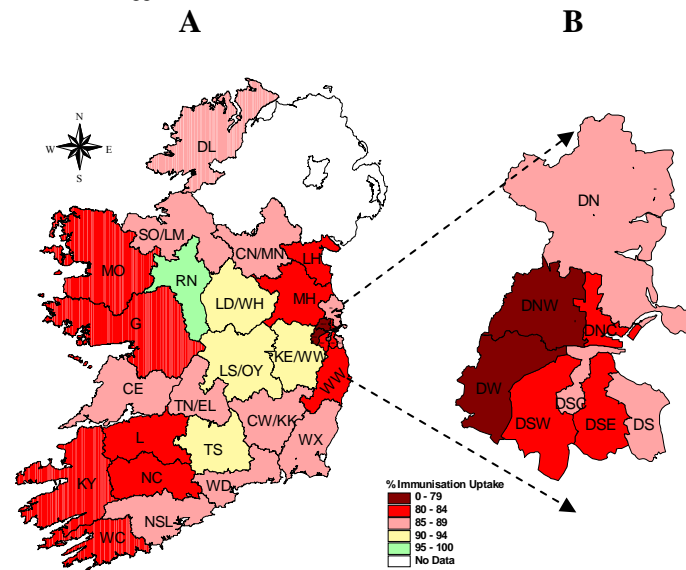


Figure 8. MenC₃ immunisation uptake rates (%) by LHO, in those 24 months of age in Quarter 4-2011, in (A) Ireland and (B) Dublin. Please see Appendix 3 to translate LHO codes.

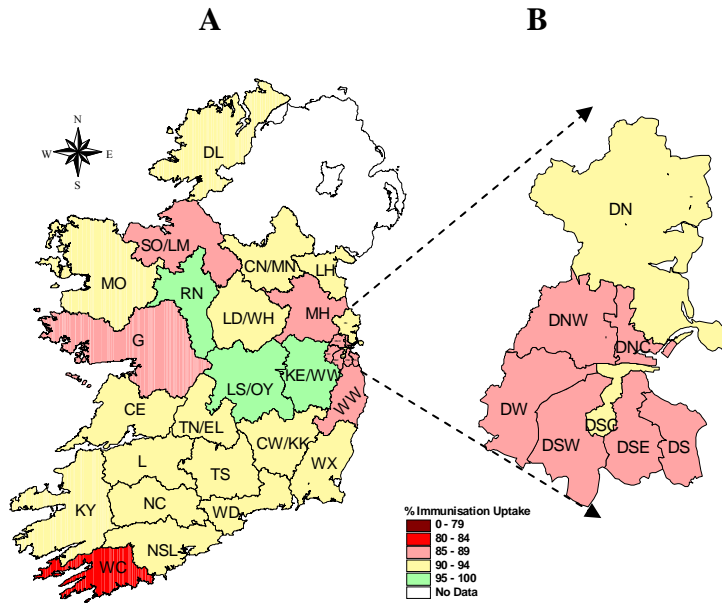


Figure 9. PCV₃ immunisation uptake rates (%) by LHO, in those 24 months of age in Quarter 4-2011, in (A) Ireland and (B) Dublin. Please see Appendix 3 to translate LHO codes.

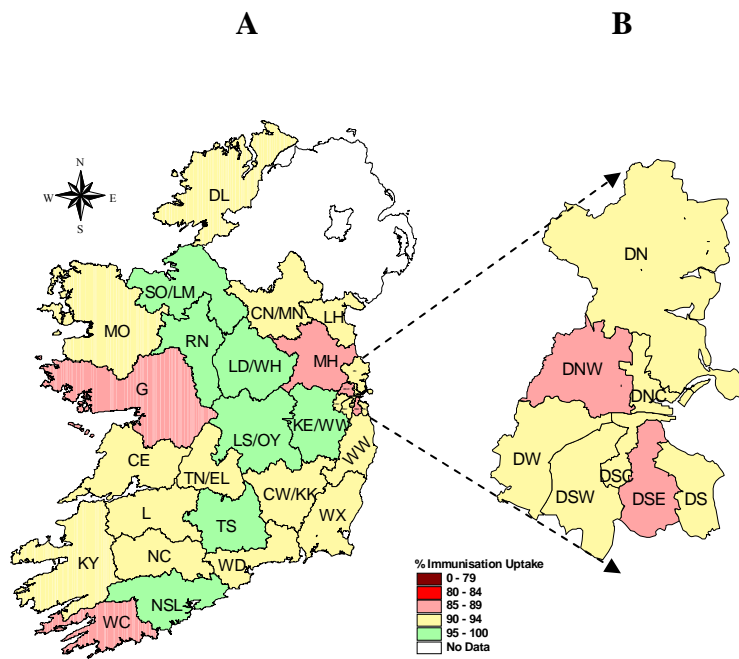


Figure 10. MMR₁ immunisation uptake rates (%) by LHO, in those 24 months of age in Quarter 4-2011, in (A) Ireland and (B) Dublin. Please see Appendix 3 to translate LHO codes.

Appendix 1

Immunisation Uptake at 12 Months in Cohort Born 01/10/2010-31/12/2010											
HSE Area	LHO/HSE Area	No. in cohort for BCG	No. in cohort for other vaccines [*]	Immunisation Uptake (%)							
				BCG	D ₃ T ₃	P ₃	Hib ₃	Polio ₃	HepB ₃	MenC ₂	PCV ₂
Eastern	Dublin South	na	440	na	92	92	92	92	92	92	92
	Dublin South East	na	459	na	88	88	88	88	88	88	88
	Dublin South City	na	439	na	95	95	95	95	95	95	95
	Dublin South West	na	674	na	95	95	95	95	95	95	95
	Dublin West	na	732	na	70	70	70	70	70	71	71
	Dublin North West	na	1068	na	84	84	84	84	84	84	83
	Dublin North Central	na	500	na	89	89	89	89	89	89	89
	Dublin North	na	1100	na	92	92	92	92	92	92	92
	Kildare/West Wicklow	na	1155	na	91	91	91	91	91	91	91
Wicklow	na	540	na	90	90	90	90	90	90	90	
HSE-E Total	na	7107	na	88	88	88	88	88	88	88	
Midland	Laos/Offaly	699	699	95	92	92	92	92	92	92	92
	Longford/Westmeath	551	551	97	97	97	97	97	97	97	97
	HSE-M Total	1250	1250	96	94	94	94	94	94	94	94
Mid Western	Clare	445	441	98	92	92	92	92	92	93	92
	Limerick	547	529	97	93	93	93	93	93	93	93
	Tipperary NR/East Limerick	543	560	97	95	95	95	95	95	94	95
	HSE-MW Total	1535	1530	98	93	93	93	93	93	93	93
North Eastern	Cavan/Monaghan	na	538	na	91	91	91	91	91	90	90
	Louth	na	541	na	89	89	89	89	89	88	88
	Meath	na	924	na	84	84	84	84	83	83	83
	HSE-NE Total	na	2003	na	87	87	87	87	87	86	86
North Western	Donegal	603	603	95	92	92	92	92	92	92	92
	Sligo/Leitrim	334	334	94	93	93	93	93	92	91	94
	HSE-NW Total	937	937	95	92	92	92	92	92	92	93
South Eastern	Carlow/Kilkenny	576	576	96	93	93	93	93	93	93	93
	South Tipperary	346	346	95	94	94	94	94	94	93	94
	Waterford	536	536	96	95	95	95	95	95	95	95
	Wexford	570	570	96	92	92	92	92	92	92	92
	HSE-SE Total	2028	2028	96	93	93	93	93	93	93	93
Southern	North Cork	429	421	90	92	92	91	92	91	89	88
	North South Lee	1566	1539	93	92	92	92	92	91	89	89
	West Cork	212	211	93	90	90	90	90	89	87	86
	Kerry	508	495	93	89	89	89	89	88	87	87
	HSE-S Total	2715	2666	92	91	91	91	91	90	89	88
Western	Galway	na	997	na	90	90	90	90	90	90	90
	Mayo	na	465	na	92	92	92	92	92	93	93
	Roscommon	na	258	na	98	98	98	98	98	98	99
	HSE-W Total	1720	1720	4	92	92	92	92	92	92	92
Ireland	10185	19241	80	90	90	90	90	90	90	90	

na=not available

* As the denominator/number in cohort varied slightly according to vaccine, most commonly used number is presented here.

Please note while North Lee and South Lee are two separate LHOs their combined immunisation uptake data are reported here.

Appendix 2

Immunisation uptake (%) at 24 months of age in cohort born 01/10/2009-31/12/2009											
HSE Area	LHO/HSE Area	No. in cohort*	Immunisation Uptake (%)								
			D ₃ T ₃	P ₃	Hib ₃	Hib _b	Polio ₃	HepB ₃	MenC ₃	PCV ₃	MMR ₁
Eastern	Dublin South	446	94	94	94	95	94	94	86	89	91
	Dublin South East	396	90	90	90	89	90	81	86	88	
	Dublin South City	442	97	97	97	95	97	96	87	90	94
	Dublin South West	652	94	94	94	94	94	93	84	89	92
	Dublin West	752	94	94	94	89	94	94	75	87	90
	Dublin North West	969	93	93	93	85	93	93	79	87	88
	Dublin North Central	450	94	94	94	96	94	94	83	86	90
	Dublin North	1132	95	95	95	95	95	95	87	91	93
	Kildare/West Wicklow	1064	96	96	96	98	96	96	90	95	96
	Wicklow	537	94	94	94	88	94	94	81	89	91
HSE-E Total	6840	94	94	94	92	94	94	84	90	92	
Midland	Laois/Offaly	695	98	98	98	95	98	98	91	95	97
	Longford/Westmeath	542	98	98	98	95	98	98	91	94	96
	HSE-M Total	1237	98	98	98	95	98	98	91	95	97
Mid Western	Clare	451	96	96	96	90	96	96	86	92	93
	Limerick	553	93	93	93	86	93	93	83	90	92
	Tipperary NR/East Limerick	531	97	97	97	91	97	97	87	93	94
	HSE-MW Total	1535	95	95	95	89	95	95	85	92	93
North Eastern	Cavan/Monaghan	597	97	97	97	90	97	97	88	93	94
	Louth	521	95	95	95	88	95	95	84	90	90
	Meath	932	95	95	95	85	95	95	82	87	88
	HSE-NE Total	2050	95	95	95	87	95	95	84	90	90
North Western	Donegal	598	97	97	97	93	97	95	86	90	92
	Sligo/Leitrim	387	98	98	98	96	98	98	89	89	98
	HSE-NW Total	985	97	97	97	95	97	96	87	90	95
South Eastern	Carlow/Kilkenny	541	95	95	95	92	95	95	87	91	94
	South Tipperary	407	98	98	98	97	98	98	90	94	96
	Waterford	545	95	95	95	92	95	95	88	93	94
	Wexford	575	95	95	95	93	95	95	87	92	93
	HSE-SE Total	2068	95	95	95	93	95	95	88	92	94
Southern	North Cork	391	96	96	96	83	96	95	84	90	91
	North South Lee	1458	98	98	97	85	98	96	87	93	95
	West Cork	193	90	90	89	78	90	90	80	84	86
	Kerry	513	95	95	94	82	95	94	83	90	92
	HSE-S Total	2555	96	96	96	84	96	95	85	91	93
Western	Galway	1005	93	93	93	81	93	93	81	88	89
	Mayo	441	96	96	96	83	96	96	84	92	92
	Roscommon	249	96	96	96	96	96	96	95	97	96
	HSE-W Total	1695	94	94	94	84	94	94	84	90	91
Ireland	18965	95	95	95	90	95	95	85	91	92	

na=not available

*As the denominator/number in cohort varied slightly according to vaccine. The most commonly used number is reported here.

Please note while North Lee and South Lee are two separate LHOs their combined immunisation uptake data are reported here.

Appendix 3

Local Health Office (LHO) Abbreviations (used in maps in this report)	Local Health Office (LHO)
CE	Clare
CN/MN	Cavan/Monaghan
CW/KK	Carlow/Kilkenny
DL	Donegal
DN	Dublin North
DNC	Dublin North Central
DNW	Dublin North West
DS	Dublin South
DSC	Dublin South City
DSE	Dublin South East
DSW	Dublin South West
DW	Dublin West
G	Galway
KE/WW	Kildare/West Wicklow
KY	Kerry
L	Limerick
LD/WD	Longford/Westmeath
LH	Louth
LS/OY	Laois/Offaly
MH	Meath
MO	Mayo
NC	North Cork
NSL*	North South Lee*
RN	Roscommon
SO/LM	Sligo/Leitrim
TN/EL	Tipperary North /East Limerick
TS	South Tipperary
WC	West Cork
WD	Waterford
WX	Wexford
WW	Wicklow

*Please note while North Lee and South Lee are two separate LHOs their combined immunisation uptake data are reported here