

Summary

In Quarter 3-2008, national immunisation uptake rates in children 12 months of age were 89% for D₃, P₃, T₃, Hib₃ and Polio₃. When compared to the previous quarter uptake of these vaccines increased by 1%.

In Q3-2008, national immunisation uptake rates in children 24 months of age were 93% for D₃, P₃, T₃, Hib₃ and Polio₃. When compared to the previous quarter uptake of D₃, P₃, T₃, Hib₃ and Polio₃ were unchanged. In Q3-2008, the target uptake rate of 95% was reached or exceeded in the HSE-Midland for D₃, P₃, T₃, Hib₃, Polio₃ and MenC₃ and in the HSE-North Western Area for D₃, P₃, T₃, Hib₃ and Polio₃. All eight HSE Areas had uptake of ≥90% for D₃, P₃, T₃, Hib₃ and Polio₃ in Q3-2008.

In Q3-2008, the national immunisation uptake rate at 24 months for MMR₁ was 89%, unchanged when compared to the previous quarter.

Trends at 12 months

Figure 1 presents the national uptake rates at 12 months for each vaccine from Q3-2000 to Q3-2008. In Q3-2008 national uptake rates for D₃, P₃, T₃, Hib₃ and Polio₃ increased by 1% when compared to the previous quarter.

In Q3-2008, D₃, P₃, T₃, Hib₃, Polio₃ and MenC₃ uptake rates, in children 12 months of age, increased by 2-3% in the HSE-Southern Area and by 2% in the HSE-Western Area when compared to the previous quarter.

Internationally

Vaccination coverage statistics for D₃, P₃, T₃, Hib₃ and Polio₃ for children 12 months of age in Quarter 3-2008 were 91.0% in England, 95.5% in Wales, 96.7% in Northern Ireland and 97.0% in Scotland.¹ MenC₂ uptake was 90.6% in England, 95.4% in Wales, 96.6% in Northern Ireland and 96.9% in Scotland.¹ Please see HPA report for caveats to data.¹

Introduction

The immunisation uptake statistics presented in this report relate to children 12 and 24 months of age in Quarter 3-2008 and who have received three doses of vaccines against diphtheria (D₃), pertussis (P₃), tetanus (T₃), *Haemophilus influenzae* type b (Hib₃), polio (Polio₃) and meningococcal group C (MenC₃), one booster dose of vaccine against *Haemophilus influenzae* type b after 12 months of age (Hib_b; uptake at 24 months only), one dose of vaccine against measles, mumps and rubella (MMR₁; uptake at 24 months only) and one dose of BCG vaccine (BCG; uptake at 12 months only). These statistics therefore relate to uptake in the cohorts born between 01/07/2007 & 30/09/2007 and 01/07/2006 & 30/09/2006.

Immunisation uptake at 12 months

Immunisation uptake rates in children 12 months of age in Q3-2008 are presented (Table 1). National uptake rates were 89% for D₃, P₃, T₃, Hib₃ and Polio₃. MenC₃ uptake data were only available for six of the eight HSE-Areas, these areas cover 56% of the national birth cohort. Where data were available, national uptake was 88% for MenC₃. The highest uptake rates for these vaccines at 12 months were in the HSE-Midland Area (93%) while the lowest rates were in the HSE-Southern Area (86-87%). BCG uptake data were available for five of the eight HSE-Areas (data from HSE-Southern Area relates to Kerry only). These areas cover approximately a third of the national birth cohort. Where data were available, national uptake was 94% for the BCG vaccination. This is an increase of one percent compared to Q2-2008 when BCG uptake was 93%.

Table 1. Immunisation uptake (%) at 12 months in cohort born 01/07/2007–30/09/2007

HSE Area	No. in cohort*	BCG	D ₃	P ₃	T ₃	Hib ₃	Polio ₃	MenC ₃
Eastern	7022	na	88	88	88	88	88	na
Midland	1321	93	93	93	93	93	93	93
Mid Western	1606	97	90	90	90	90	90	na
North Eastern	2049	na	89	89	89	89	89	87
North Western	980	95	92	92	92	92	92	91
South Eastern	2029	93	88	88	88	88	88	88
Southern	2715	90 [†]	86	86	86	86	86	87
Western	1805	na	89	89	89	89	89	89
Ireland	19527 [‡]	94	89	89	89	89	89	88 [§]

na = not available at this time

*As the denominator/number in cohort varied slightly according to vaccine, most commonly used number is presented here.

[†] HSE-Southern - part coverage of neonatal BCG (i.e. Kerry only)

[‡] Number in cohort for BCG vaccination = 6,469 and number in cohort for MenC₃ vaccination = 10,883

[§]MenC₃ uptake figure based on data from six HSE Areas

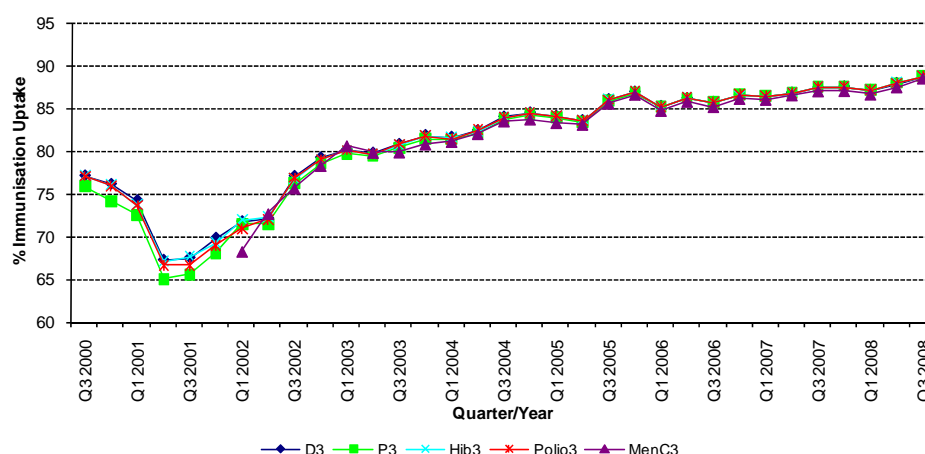


Figure 1. National quarterly immunisation uptake rates at 12 months
Since T₃ uptake identical to D₃ uptake only D₃ uptake figures presented
The Q3 2008 MenC₃ uptake figure is based on data from six of the eight HSE Areas

Immunisation uptake at 24 months

Immunisation uptake rates in children 24 months of age in Q3-2008 are presented (Table 2). National uptake rates were 93% for D₃, P₃, T₃, Hib₃ and Polio₃. MenC₃ uptake data were only available for six of the eight HSE-Areas; these areas cover 57% of the national birth cohort. Where data were available, national uptake was 93% for MenC₃. Hib₆ uptake data were only available for seven of the eight HSE-Areas, these areas cover 92% of the national birth cohort. Where data were available, national uptake was 83% for Hib₆. The target uptake rate of 95% was reached or exceeded in the HSE-Midland Area for D₃, P₃, T₃, Hib₃, Polio₃ and MenC₃ and in the HSE-North Western Area for D₃, P₃, T₃, Hib₆ and Polio₃. MMR₁ uptake was 89% nationally (Table 2).

D₃, P₃, T₃, Hib₃, Polio₃ & MenC₃ trends

Figure 2 presents the national uptake rates at 24 months for each vaccine from Q1-1999 to Q3-2008. In Q3-2008, national uptake rates for D₃, P₃, T₃, Hib₃ and Polio₃ were unchanged when compared to the previous quarter.

In Q3-2008 uptake rates for D₃, P₃, T₃, Hib₃, Polio₃ and MenC₃ increased by 1% in the HSE Western Area, decreased by 2-3% in the HSE North Eastern Area and decreased by 1% in the HSE Midland Area, compared to the previous quarter.

Hib booster uptake

Following the national Hib campaign from November 2005 to May 2006, among children less than four years of age, a Hib booster (Hib₆) was introduced into the routine childhood immunisation schedule.

Q3-2008 is the seventh quarter where uptake statistics for Hib₆ are available. These figures relate to children who received a dose of Hib after 12 months of age.

Uptake statistics for the Hib booster were available for seven of the eight HSE-Areas in Q3-2008, where data were available the national uptake rate was 83% (Figure 2). Data were available from seven HSE-Areas in Q2-2008 when uptake was 82%.

MMR₁ uptake

In Q3-2008, the national MMR₁ uptake rate at 24 months was 89%, unchanged from the previous quarter.

When compared to Q2-2008 the MMR₁ uptake rate increased by 2% in the HSE-South Eastern Area and by 1% in the HSE-Eastern and Western Areas. The MMR₁ uptake rate decreased by 3% in the HSE Mid Western Area, by 2% in the HSE North Western Area and by 1% in the HSE North Eastern Southern Areas when compared to Q2-2008. The MMR₁ uptake rate was unchanged in the HSE Midland Area compared to the previous quarter.

Table 2. Immunisation uptake (%) at 24 months in cohort born 01/07/2006 – 30/09/2006

HSE Area	No. in Cohort*	D ₃	P ₃	T ₃	Hib ₃	Hib ₆	Polio ₃	MenC ₃	MMR ₁
Eastern	6186	92	92	92	92	77	92	na	88
Midland	1220	96	96	96	96	92	96	96	94
Mid Western	1459	94	94	94	93	na	93	na	88
North Eastern	1925	93	93	93	93	86	92	92	89
North Western	932	96	96	96	94	95	96	93	91
South Eastern	2115	91	91	91	91	87	91	90	88
Southern	2356	93	93	93	93	82	93	92	88
Western	1609	94	94	94	94	82	94	94	88
Ireland	17802†	93	93	93	93	83‡	93	93‡	89

* As the denominator/number in cohort varied slightly according to vaccine, most commonly used number is presented here. † Number in cohort for Hib₆ vaccination = 16,347 and number in cohort for MenC₃ vaccination=10,141. ‡ Hib₆ and MenC₃ figures based on data from seven and six HSE Areas, respectively.

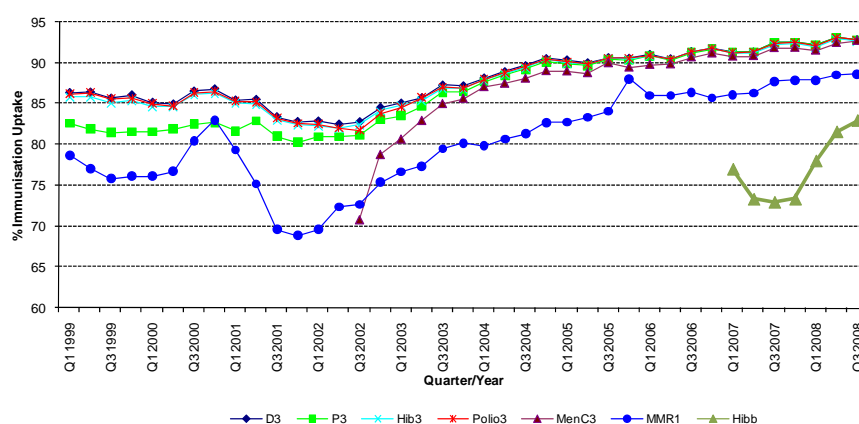


Figure 2. National quarterly immunisation uptake rates at 24 months

Notes: The Q4-2005 MMR₁ figure is based on data from seven of the eight HSE-Areas. The Q1-2006 MMR₁ figure includes the HSE-Eastern Area figure that is an estimate only. The Q1-2007, Q3-2007, Q2-2008 and Q3-2008 Hib₆ figures are based on data from seven of the eight HSE Areas. In Q1-2008 the HSE-SE changed their Hib₆ data extraction method compared to previous quarters; in Q1-2008 the uptake of Hib₆ in the HSE-SE was 83% compared to 53% in Q4-2007. The Q3-2008 MenC₃ figure is based on data from six of the eight HSE Areas.

Internationally

In Q3-2008, vaccination coverage statistics at 24 months for D₃, P₃, T₃, Hib₃ and Polio₃ were 93.4% in England, 96.9% in Wales, 97.6% in Northern Ireland and 98.1% in Scotland.¹ Infant MenC uptake was 91.2% in England, 95.1% in Wales, 95.3% in Northern Ireland and 95.8% in Scotland.¹ MMR₁ uptake was 83.4% in England, 88.4% in Wales, 90.1% in Northern Ireland and 92.3% in Scotland.¹ Please see HPA report for caveats to data.¹

Conclusions

In Q3-2008, the national MMR₁ uptake was 6% below the target rate of 95%. The uptake rate for Hib₆ was 12% below the target rate. Uptake rates for all other vaccines at 24 months were 2% below the target rates.

Further information

The Q3-2008 immunisation uptake statistics by Local Health Office (LHO) are presented in a separate summary document, available at <http://www.hpsc.ie>. A complete listing of national and regional immunisation uptake statistics at 12 and 24 months for each HSE Area is also available at <http://www.hpsc.ie>.

Acknowledgements

HPSC would like to thank the HSE Areas for providing data and special thanks to the Specialists in Public Health Medicine, Immunisation Co-ordinators, Surveillance Scientists and Systems Analysts for their assistance.

References

1. COVER programme: July to September 2008. Health Protection Report 2008: 2 (51). Available at: <http://www.hpa.org.uk/hpr/archives/2008/hpr5108.pdf>