

## Summary

In Quarter 1-2008, national immunisation uptake rates, in children 12 months of age were 87% for D<sub>3</sub>, P<sub>3</sub>, T<sub>3</sub>, Hib<sub>3</sub>, Polio<sub>3</sub> and MenC<sub>3</sub>. When compared to the previous quarter uptake of D<sub>3</sub>, P<sub>3</sub>, T<sub>3</sub> and Polio<sub>3</sub> decreased by 1% while uptake of Hib<sub>3</sub> and MenC<sub>3</sub> were unchanged.

In Q1-2008, national immunisation uptake rates in children 24 months of age were 92% for D<sub>3</sub>, P<sub>3</sub>, T<sub>3</sub>, Hib<sub>3</sub>, Polio<sub>3</sub> and MenC<sub>3</sub> and 78% for the Hib booster. When compared to the previous quarter uptake of D<sub>3</sub>, P<sub>3</sub>, T<sub>3</sub> and Polio<sub>3</sub> decreased by 1% while uptake of Hib<sub>3</sub> and MenC<sub>3</sub> were unchanged. In Q1-2008, the target uptake rate of 95% was reached or exceeded for D<sub>3</sub>, P<sub>3</sub>, T<sub>3</sub>, Hib<sub>3</sub>, Polio<sub>3</sub> and MenC<sub>3</sub> in the HSE-Midland Area and for D<sub>3</sub>, P<sub>3</sub>, T<sub>3</sub>, Hib<sub>3</sub>, Hib<sub>b</sub> and Polio<sub>3</sub> in the HSE-North Western Area.

In Q4-2007, the national immunisation uptake rate at 24 months for MMR<sub>1</sub> was 88%, unchanged when compared to the previous quarter.

## Trends at 12 months

Figure 1 presents the national uptake rates at 12 months for each vaccine from Q3-2000 to Q1-2008. In Q1-2008 national uptake rates for D<sub>3</sub>, P<sub>3</sub>, T<sub>3</sub>, and Polio<sub>3</sub> decreased by 1% when compared to the previous quarter while Hib<sub>3</sub> and MenC<sub>3</sub> were unchanged.

In Q1-2008, the HSE-Southern Area reported decreases of 1-2% for D<sub>3</sub>, P<sub>3</sub>, T<sub>3</sub>, Hib<sub>3</sub>, Polio<sub>3</sub> and MenC<sub>3</sub>, in children 12 months of age, when compared to the previous quarter while the HSE-Eastern and Midland Areas reported decreases of 1%.

## Internationally

Vaccination coverage statistics for D<sub>3</sub>, P<sub>3</sub>, T<sub>3</sub>, Hib<sub>3</sub> and Polio<sub>3</sub> for children 12 months of age in Quarter 1-2008 were 90.9% in England, 95.6% in Wales, 96.2% in Northern Ireland and 96.8% in Scotland.<sup>1</sup> MenC<sub>2</sub> uptake was 90.1% in England, 95.2% in Wales, 96.0% in Northern Ireland and 96.5% in Scotland.<sup>1</sup> Please see HPA report for caveats to data.<sup>1</sup>

## Introduction

The immunisation uptake statistics presented in this report relate to children 12 and 24 months of age in Quarter 1-2008 and who have received three doses of vaccines against diphtheria (D<sub>3</sub>), pertussis (P<sub>3</sub>), tetanus (T<sub>3</sub>), *Haemophilus influenzae* type b (Hib<sub>3</sub>), polio (Polio<sub>3</sub>) and meningococcal group C (MenC<sub>3</sub>), one booster dose of vaccine against *Haemophilus influenzae* type b after 12 months of age (Hib<sub>b</sub>; uptake at 24 months only), one dose of vaccine against measles, mumps and rubella (MMR<sub>1</sub>; uptake at 24 months only) and one dose of BCG vaccine (BCG; uptake at 12 months only). These statistics therefore relate to uptake in the cohorts born between 01/01/2007 & 31/03/2007 and 01/01/2006 & 31/03/2006.

## Immunisation uptake at 12 months

Immunisation uptake rates in children 12 months of age in Q1-2008 are presented (Table 1). National uptake rates were 87% for D<sub>3</sub>, P<sub>3</sub>, T<sub>3</sub>, Hib<sub>3</sub>, Polio<sub>3</sub> and MenC<sub>3</sub>. The highest uptake rates for these vaccines at 12 months were in the HSE-Midland Area (92%) and the HSE-North Western Area (91-92%) while the lowest rates were in the HSE-Southern Area (83%). BCG uptake data were available for five of the eight HSE-Areas (data from HSE-Southern Area relates to Kerry only). These areas cover approximately a third of the national birth cohort. Where data were available, national uptake was 94% for the BCG vaccination. This is an increase of one percent compared to Q4-2007 when BCG uptake was 93%.

**Table 1.** Immunisation uptake (%) at 12 months in cohort born 01/01/2007–31/03/2007

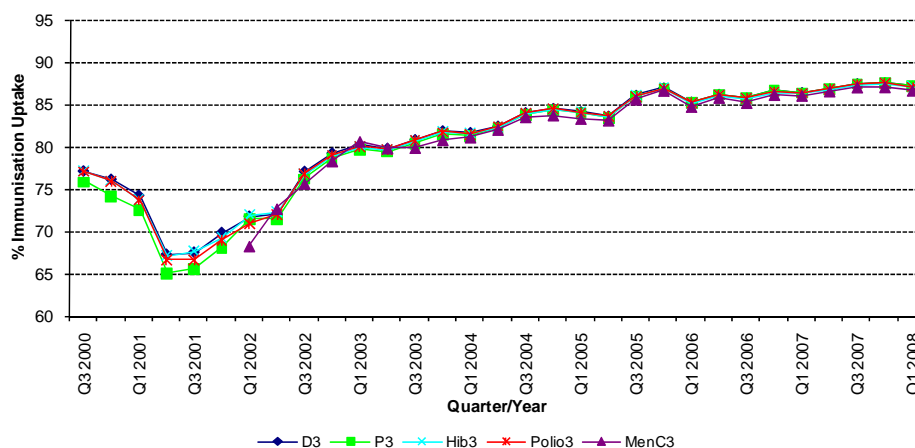
HSE Area	No. in cohort*	BCG	D <sub>3</sub>	P <sub>3</sub>	T <sub>3</sub>	Hib <sub>3</sub>	Polio <sub>3</sub>	MenC <sub>3</sub>
Eastern	5902	na	86	86	86	86	86	86
Midland	1069	93	92	92	92	92	92	92
Mid Western	1418	97	89	89	89	89	89	89
North Eastern	1784	na	89	89	89	89	89	88
North Western	918	94	92	92	92	91	91	91
South Eastern	1832	92	87	86	87	86	86	86
Southern	2420	91 <sup>†</sup>	83	83	83	83	83	83
Western	1482	na	88	88	88	88	88	87
<b>Ireland</b>	<b>16825<sup>‡</sup></b>	<b>94</b>	<b>87</b>	<b>87</b>	<b>87</b>	<b>87</b>	<b>87</b>	<b>87</b>

na = not available at this time

\*As the denominator/number in cohort varied slightly according to vaccine, most commonly used number is presented here.

† HSE-Southern - part coverage of neonatal BCG (i.e. Kerry only)

‡ Number in cohort for BCG vaccination = 5,699



**Figure 1.** National quarterly immunisation uptake rates at 12 months  
 Since T<sub>3</sub> uptake identical to D<sub>3</sub> uptake only D<sub>3</sub> uptake figures presented

## Immunisation uptake at 24 months

Immunisation uptake rates in children 24 months of age in Q1-2008 are presented (Table 2). National uptake rates were 92% for D<sub>3</sub>, P<sub>3</sub>, T<sub>3</sub>, Hib<sub>3</sub>, Polio<sub>3</sub> and MenC<sub>3</sub>. Seven HSE Areas had uptake of 90% or greater for D<sub>3</sub>, P<sub>3</sub>, T<sub>3</sub>, Hib<sub>3</sub>, Polio<sub>3</sub> and MenC<sub>3</sub>. The target uptake rate of 95% was exceeded for D<sub>3</sub>, P<sub>3</sub>, T<sub>3</sub>, Hib<sub>3</sub>, Polio<sub>3</sub> and MenC<sub>3</sub> in the HSE-Midland Area and for D<sub>3</sub>, P<sub>3</sub>, T<sub>3</sub>, Hib<sub>3</sub> and Polio<sub>3</sub> in the HSE-North Western Area. MMR<sub>1</sub> uptake was 88% nationally, ranging from 86% in the HSE-Eastern, South Eastern and Western Areas to 94% in the HSE-Midland Area (Table 2). The national uptake rate for the Hib booster was 78%.

### D<sub>3</sub>, P<sub>3</sub>, T<sub>3</sub>, Hib<sub>3</sub>, Polio<sub>3</sub> & MenC<sub>3</sub> trends

Figure 2 presents the national uptake rates at 24 months for each vaccine from Q1-1999 to Q1-2008. In Q1-2008, national uptake rates for D<sub>3</sub>, P<sub>3</sub>, T<sub>3</sub>, and Polio<sub>3</sub> decreased by 1% when compared to the previous quarter while Hib<sub>3</sub> and MenC<sub>3</sub> were unchanged.

The HSE-South Eastern Area uptake rates for D<sub>3</sub>, P<sub>3</sub>, T<sub>3</sub>, Hib<sub>3</sub>, Polio<sub>3</sub> and MenC<sub>3</sub> in Q1-2008 decreased by 2-3% compared to the previous quarter while the uptake rates in the HSE-Midland and Mid Western Areas decreased by 1%.

### Hib booster uptake

Following the national Hib campaign from November 2005 to May 2006, among children less than four years of age, a Hib booster (Hib<sub>b</sub>) was introduced into the childhood immunisation schedule in September 2006. The childhood immunisation schedule recommends Hib<sub>b</sub> at 12 to 15 months of age (at the same time as MMR vaccine) to give extra protection against Hib infection.

Q1-2008 is the fifth quarter where uptake statistics for Hib<sub>b</sub> are available. These figures relate to children who received a dose of Hib after 12 months of age.

In Q1-2008 national uptake was 78% (Figure 2). The target uptake rate of 95% was reached for Hib<sub>b</sub> in the HSE-North Western Area in Q1-2008 (Table 2).

### MMR<sub>1</sub> uptake

In Q1-2008, the national MMR<sub>1</sub> uptake rate at 24 months was 88%, unchanged from the previous quarter.

When compared to Q4-2007 the MMR<sub>1</sub> uptake rate increased by 1% in the HSE-Eastern and Western Areas. MMR<sub>1</sub> uptake decreased by 1% in the HSE-Mid Western, North Eastern, North Western and Southern Areas and by 2% in the HSE-South Eastern Area. The MMR<sub>1</sub> uptake rate was unchanged in the HSE-Midland Area compared to the previous quarter.

## References

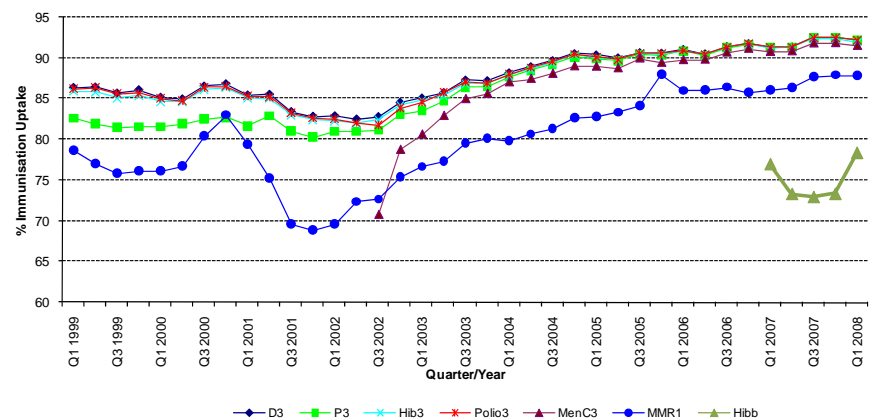
1. COVER programme: January to March 2008. Health Protection Report 2008: 2 (26). Available at: <http://www.hpa.org.uk/hpr>

**Table 2.** Immunisation uptake (%) at 24 months in cohort born 01/01/2006 – 31/03/2006

HSE Area	No. in Cohort*	D <sub>3</sub>	P <sub>3</sub>	T <sub>3</sub>	Hib <sub>3</sub>	Hib <sub>b</sub>	Polio <sub>3</sub>	MenC <sub>3</sub>	MMR <sub>1</sub>
Eastern	5496	91	91	91	91	71	91	90	86
Midland	976	96	96	96	96	91	96	96	94
Mid Western	1306	93	93	93	93	67	93	93	92
North Eastern	1654	94	94	94	94	90	94	93	90
North Western	835	98	98	98	96	95	97	94	93
South Eastern	1794	89	89	89	89	83	89	88	86
Southern	2165	93	93	93	93	80	93	93	87
Western	1443	92	92	92	92	78	92	92	86
<b>Ireland</b>	<b>15669†</b>	<b>92</b>	<b>92</b>	<b>92</b>	<b>92</b>	<b>78</b>	<b>92</b>	<b>92</b>	<b>88</b>

\* As the denominator/number in cohort varied slightly according to vaccine, most commonly used number is presented here.

† Number in cohort for Hib<sub>b</sub> vaccination = 15,694.



**Note 1** The Q4-2005 MMR<sub>1</sub> figure is based on data from seven of the eight HSE Areas. The Q1-2006 MMR<sub>1</sub> figure includes the HSE-Eastern Area figure that is an estimate only.

**Note 2** The Q1 and Q3-2007 Hib<sub>b</sub> figures are based on data from seven of the eight HSE Areas. In Q1-2008 the HSE-SE changed their Hib<sub>b</sub> data extraction method compared to previous quarters; in Q1-2008 the uptake of Hib<sub>b</sub> in the HSE-SE was 83% compared to 53% in Q4-2007.

## Internationally

In Q1-2008, vaccination coverage statistics at 24 months for D<sub>3</sub>, P<sub>3</sub>, T<sub>3</sub>, Hib<sub>3</sub> and Polio<sub>3</sub> were 93.6% in England, 97.2% in Wales, 97.6% in Northern Ireland and 98% in Scotland.<sup>1</sup> Infant MenC uptake was 92.9% in England, 91.4% in Wales, 97.2% in Northern Ireland and 96.8% in Scotland.<sup>1</sup> MMR<sub>1</sub> uptake was 83.0% in England, 87.4% in Wales, 89.8% in Northern Ireland and 91.2% in Scotland.<sup>1</sup> Please see HPA report for caveats to data.<sup>1</sup>

## Conclusions

In Q1-2008, the national MMR<sub>1</sub> uptake was 7% below the target rate of 95%. The uptake rate for Hib<sub>b</sub> was 17% below the target rate. Uptake rates for all other vaccines at 24 months were 3% below the target rates.

## Further information

The Q1-2008 immunisation uptake statistics by Local Health Office (LHO) are also presented in a separate summary document, available at <http://www.hpsc.ie>. A complete listing of national and regional immunisation uptake statistics at 12 and 24 months for each HSE Area is also available at <http://www.hpsc.ie>.

## Acknowledgements

HPSC would like to thank the HSE Areas for providing data and special thanks to the Specialists in Public Health Medicine, Immunisation Co-ordinators, Surveillance Scientists and Systems Analysts for their assistance.