

Summary

In Quarter 1-2004, national immunisation uptake rates in children at 12 months of age remained unchanged when compared with Q4-2003 with the exception of BCG and Polio₃. Uptake rates for D₃, T₃, and Hib₃ were 82% while the uptake rates for P₃, MenC₃ and Polio₃ were 81%.

Quarter 1-2004 is the third quarter where uptake rates for the BCG vaccination are presented. Where data were available, an uptake rate of 88% was reported for the BCG vaccination. This represents a decrease of 3% on the figure reported in Q4-2003.

At 24 months, national uptake rates for all antigens increased by 1-2% when compared with the previous quarter with the exception of MMR₁ which remained unchanged. Uptake rates at 24 months for D₃, P₃, T₃, Hib₃, and Polio₃ were 88%, while MenC₃ uptake was 87%, and MMR₁ uptake was 80%.

Trends at 12 months

Figure 1 presents the national uptake rates at 12 months for each vaccine component from Q3-2000 to Q1-2004. National uptake rates for all antigens at 12 months in Q1-2004 remained unchanged when compared to the previous quarter with the exception of Polio₃ and BCG whose uptake decreased by 1% and 3% respectively. Two health boards reported decreases in uptake rates for all vaccines at 12 months; WHB (2-3%) and MWHB (1-3%). Increases of 2% were reported by MHB for all vaccines with the exception of BCG while SHB reported increases of 1-2% for all vaccines with the exception of BCG and Polio₃.

Internationally

Vaccination coverage statistics for children 12 months of age in Quarter 4-2003 were 94-95% in Northern Ireland¹ and 90-91% for the United Kingdom as a whole².

Introduction

The immunisation uptake statistics presented in this report relate to children 12 and 24 months of age in Quarter 1-2004 and who have received three doses of vaccines against diphtheria (D₃), pertussis (P₃), tetanus (T₃), *Haemophilus influenzae* type b (Hib₃), polio (Polio₃), meningococcal group C (MenC₃), one dose of vaccine against measles, mumps and rubella (MMR₁; uptake at 24 months only) and one dose of BCG vaccine (BCG; uptake at 12 months only). These statistics therefore relate to uptake in the cohorts born between 01/01/2003 & 31/03/2003 and 01/01/2002 & 31/03/2002.

Immunisation uptake at 12 months

Immunisation uptake rates in children 12 months of age in Q1-2004 are presented (Table 1). National uptake rates for D₃, T₃, and Hib₃ were 82% at 12 months and were 81% for P₃, MenC₃ and Polio₃. The highest uptake rates for these vaccines at 12 months were reported by the NWHB (88-89%) and the MHB (88-89%), while the lowest rates were reported in the WHB (74-76%).

Quarter 1-2004 is the third quarter where uptake statistics for the BCG vaccination are presented. Data are available for 5 of the 8 health boards at this time, covering less than half of the Q1-2004 birth cohort (data from SHB relates to Kerry CCA only). Where data were available, national uptake was 88% for the BCG vaccination. This represents a decrease of 3% on the figure reported in Q4-2003.

Table 1. Immunisation uptake (%) in cohort born 01/01/2003–31/03/2003, calculated at 12 months

Health Board	No. in cohort	BCG	D ₃	P ₃	T ₃	Hib ₃	Polio ₃	MenC ₃
ERHA	5,414	na	78	78	78	78	78	77
MHB	898	76	89	88	89	89	89	89
MWHB	1,244	88	85	85	85	85	85	85
NEHB	1,501	na	82	82	82	82	82	81
NWHB	757	89	89	89	89	88	89	89
SEHB	1,613	95	87	86	87	86	86	86
SHB	2,082	83 [†]	83	82	83	83	81	83
WHB	1,340	na	76	76	76	76	76	74
Ireland	14,849[‡]	88	82	81	82	82	81	81

[†]SHB - part coverage of neonatal BCG (i.e. Kerry only)

[‡]number in cohort for BCG vaccination = 4,899

na = not available at this time

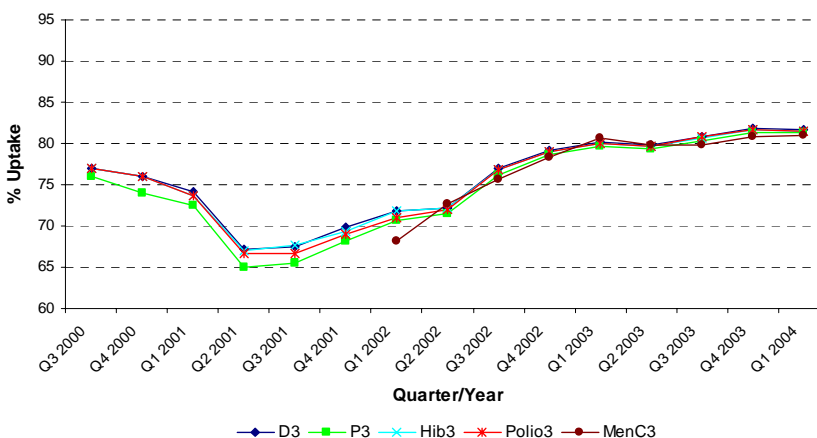


Figure 1. National quarterly immunisation uptake rates at 12 months

Immunisation uptake at 24 months

Immunisation uptake rates in children 24 months of age in Quarter 1-2004 are presented (Table 2). National uptake rates were 88% for D₃, P₃, T₃, Hib₃ and Polio₃, and 87% for MenC₃. Uptake rates for these vaccines ranged from 84-85% in the ERHA up to 93-95% in the NWHB (Table 2). The target uptake rate of 95% was reached for D₃, P₃, T₃ and MenC₃ in the NWHB in Q1-2004. MMR₁ uptake was 80% nationally, ranging from 74% in the WHB to 90% in the MHB (Table 2).

Trends at 24 months

Figure 2 presents the national uptake rates at 24 months for each vaccine component from Q3-2000 to Q1-2004. In Q1-2004, national uptake rates increased by 1-2% for D₃, P₃, T₃, Hib₃, Polio₃ and MenC₃ at 24 months when compared with the previous quarter. Increases in uptake for all of these vaccines were reported by the SHB (2-3%), SEHB (1-3%), MWHB (1-2%) and WHB (1-2%). The largest increases reported were by the SHB for D₃, P₃, T₃ and Polio₃ (+3%) and by the SEHB for Hib₃ and Polio₃ (+3%).

MMR₁ uptake

In Q1-2004, the national MMR₁ uptake rate at 24 months was 80%, remaining unchanged from the previous quarter. MMR₁ uptake rates increased by 1-2% in the MHB, MWHB, SEHB and SHB. The uptake rate for MMR₁ decreased by 1% in the NWHB and by 2% in the ERHA and WHB. As in Q4-2003, the highest uptake rate for MMR₁ uptake was recorded in the MHB (90%).

Internationally

In Q1-2004, vaccination coverage statistics at 24 months for D₃, P₃, T₃, Hib₃, Polio₃ and MenC₃ were 96-97% in Northern Ireland¹ and 93-94% for the United Kingdom as a whole.² MMR₁ uptake was 88% in Northern Ireland¹ and 82% in the UK.²

Conclusions

The national MMR₁ uptake rate remains 3% below the uptake rate reported in Q4-2000 and 15% below the national target rate of 95% uptake. Uptake rates for all other vaccines remain 7-8% below the national target rates.

Acknowledgements

NDSC would like to thank the health boards for providing data and special thanks to the Specialists in Public Health Medicine, Immunisation Co-ordinators, Surveillance Scientists and Systems Analysts for their assistance.

References

1. Vaccination coverage statistics for children in Northern Ireland. Available at: <http://www.cdscni.org.uk/surveillance/CoverageStats/default.asp>
2. COVER programme: January to March 2004. CDR Weekly 2004: 14(26). Available at: <http://www.hpa.org.uk/cdr/default.htm>

Table 2. Immunisation uptake (%) in cohort born 01/01/2002 – 31/03/2002, calculated at 24 months

Health Board	No. in cohort	D ₃	P ₃	T ₃	Hib ₃	Polio ₃	MenC ₃	MMR ₁
ERHA	5,346	85	84	85	84	84	84	75
MHB	912	94	92	94	94	94	94	90
MWHB	1,258	88	87	88	88	88	87	83
NEHB	1,406	93	92	93	92	92	92	83
NWHB	783	95	95	95	93	94	95	85
SEHB	1,596	91	90	91	91	91	89	86
SHB	2,119	88	87	88	87	88	87	82
WHB	1,319	88	88	88	88	88	85	74
Ireland	14,739	88	88	88	88	88	87	80

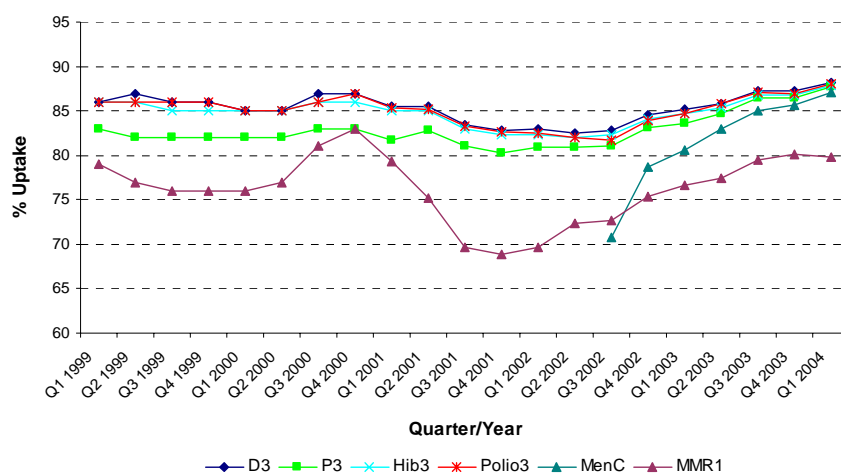


Figure 2. National quarterly immunisation uptake rates at 24 months

Further information

Figure 3 presents recent national quarterly immunisation uptake rates at 24 months from Q2-2002 to Q1-2004. A complete listing of national and regional immunisation uptake statistics at 12 and 24 months for each health board are available at the following URL:

www.ndsc.ie/Publications/Immunisation/LatestImmunisationUptakeStatistics/

Figure 3. National quarterly immunisation uptake rates at 24 months

Quarter -Year	D ₃	P ₃	T ₃	Hib ₃	Polio ₃	MenC ₃	MMR ₁
Q2-2002	83	81	83	82	82		72
Q3-2002	83	81	83	82	82	71	73
Q4-2002	85	83	85	84	84	79	75
Q1-2003	85	84	85	85	85	81	77
Q2-2003	86	85	86	85	86	83	77
Q3-2003	87	86	87	87	87	85	80
Q4-2003	87	86	87	87	87	86	80
Q1-2004	88	88	88	88	88	87	80