

IMMUNISATION UPTAKE STATISTICS FOR IRELAND



A REPORT BY THE NATIONAL DISEASE SURVEILLANCE CENTRE

Quarter 3-2002

February, 2003

Summary

In Quarter 3-2002, national uptake rates for vaccines at 12 months increased by 5% in all cases when compared with the previous quarter with the exception of MenC₃ uptake which increased by 3% to 76%. Uptake rates for D₃, T₃, Hib₃ and Polio₃ were 77% and was 76% for P₃.

At 24 months, uptake rates for all vaccines remained unchanged in Quarter 3-2002 when compared with the previous quarter with the single exception of MMR₁. National uptake of MMR₁ increased by 1% to 73% in Quarter 3-2002. Uptake for both Hib₃ and Polio₃ were 82% while uptake rates for both D₃ and T₃ were 83%. The national uptake rate for P₃ was 81%.

when compared with Q2-2002. Uptake rates for all vaccines at 12 months decreased by 1% in the WHB.

In addition, the MHB reported the greatest increases in uptake rates for D₃(10%), P₃(11%), T₃(10%), Hib₃(10%) and Polio₃ (12%) at 12 months while the biggest increase in uptake of MenC₃ was reported in the NWHB (8%).

Vaccination coverage statistics for children 12 months of age in Quarter 3-2002 were 94-95% in Northern Ireland¹ and 90-91% for the United Kingdom as a whole².

Table 1. Immunisation uptake rates in children 12 months of age in Quarter 3-2002

Health Board	No. in cohort	% Uptake at 12 months					
		Cohort born 01/07/2001 – 30/09/2001					
		D ₃	P ₃	T ₃	Hib ₃	Polio ₃	MenC ₃
ERHA	5,833	71	70	71	70	70	69
MHB	967	79	78	79	79	79	77
MWHB	1,311	86	85	86	86	86	87
NEHB	1,570	80	80	80	80	81	78
NWHB	793	87	84	87	87	87	87
SEHB	1,779	83	82	83	83	83	83
SHB	2,066	78	77	78	78	78	77
WHB	1,346	75	74	75	75	75	72
Ireland	15,661	77	76	77	77	77	76

Introduction

The immunisation uptake statistics for children 12 and 24 months of age in Quarter 3-2002 and who have received three doses of vaccines against diphtheria (D₃), pertussis (P₃), tetanus (T₃), *Haemophilus influenzae* type b (Hib₃), polio (Polio₃), Meningococcal group C (MenC₃; uptake at 12 months only) and one dose of vaccine against measles, mumps and rubella (MMR₁; uptake at 24 months only) are presented in this report. These statistics relate to uptake in the cohorts born between 01/07/2001 & 30/09/2001 and 01/07/2000 & 30/09/2000.

Results

Immunisation uptake at 12 months in Quarter 3-2002

Immunisation uptake rates in children 12 months of age in Quarter 3-2002 are presented (Table 1). National uptake rates for D₃, T₃, Hib₃, and Polio₃ at 12 months were 77% and were 76% for P₃ and MenC₃. The highest uptake rates at 12 months were reported by the NWHB at 84-87%, while the lowest rates were reported in the ERHA at 69-71% (Table 1).

National uptake of all vaccines at 12 months of age increased by 3-5% when compared with the previous quarter. Six of the 8 health boards reported increases in uptake rates for all vaccines; ERHA (1-8%), MHB (5-12%), MWHB (5-6%), NEHB (3-5%), SEHB (3-4%), and SHB (3-5%) [Appendix 1]. In the NWHB, uptake rates for all vaccines were up by 3-8% with the single exception of P₃ which remained unchanged

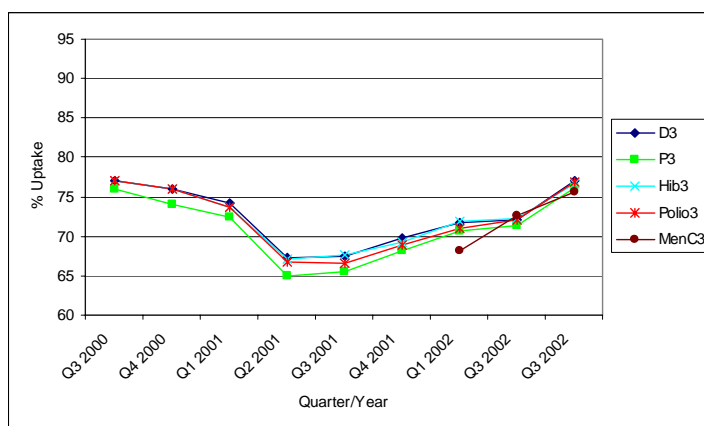


Figure 1. Quarterly immunisation uptake rates at 12 months in Ireland (Note: scale ranges from 60-95% uptake)

Immunisation uptake at 24 months in Quarter 3- 2002

Immunisation uptake rates in children 24 months of age in Quarter 3-2002 are presented (Table 2). National uptake rates were 82% for Hib₃ and Polio₃, 83% for D₃ and T₃ and 81% for P₃. Uptake rates for these vaccines ranged from 76-78% in the ERHA up to 88-93% in the NWHB (Table 2). MMR₁ uptake was 73% nationally, ranging from 64% in the ERHA to 82% in the MWHB (Table 2). The target 95% rate at 24 months was not reached at either national or health board level for any of the vaccines.

Table 2. Immunisation uptake rates in children 24 months of age in Quarter 3- 2002

Health Board	No. in cohort	% Uptake at 24 months					
		Cohort born 01/07/2000 – 30/09/2000					
		D ₃	P ₃	T ₃	Hib ₃	Polio ₃	MMR ₁
ERHA	5,593	78	77	78	77	76	64
MHB	939	83	80	83	82	83	73
MWHB	1,199	88	85	88	87	87	82
NEHB	1,359	91	90	91	91	90	80
NWHB	736	93	88	93	91	91	79
SEHB	1,610	86	84	86	85	85	81
SHB	2,027	84	82	84	83	83	76
WHB	1,254	82	81	82	82	81	74
Ireland	14,717	83	81	83	82	82	73

In Q3-2002, P₃, D₃, T₃, Hib₃ and Polio₃ uptake rates at 24 months remained unchanged when compared with the previous quarter (Figure 2 and Table 3). Although a further slight recovery in the national MMR₁ uptake rate was observed in this quarter, it is still 10% below the uptake rate reported in Q4-2000 and 22% below the national target.

Data on MenC₃ uptake in children 24 months of age in Q3-2002 are not presented in this report due to difficulties experienced in extracting data on those that had actually completed the MenC schedule. This was related to the fact that depending on the age children from this birth cohort presented for vaccination, the number of doses required to complete the MenC schedule varied between one and three doses.

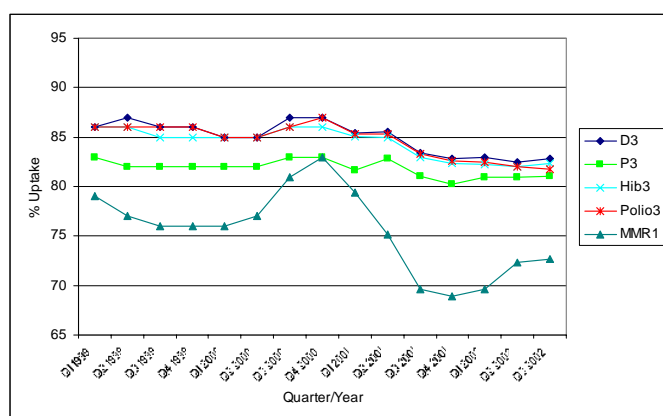


Figure 2. Quarterly immunisation uptake rates at 24 months in Ireland (Note: scale ranges from 65-95% uptake)

In Quarter 3-2002 vaccination coverage statistics at 24 months for D₃, P₃, T₃, Hib₃, Polio₃ and MenC₃ were 96-97% in Northern Ireland¹ and 92-94% for the United Kingdom as a whole.² MMR₁ uptake was 89% in Northern Ireland¹ and 83% in the UK.²

Table 3. Quarterly national immunisation uptake rates (%) at 24 months

	D ₃	P ₃	T ₃	Hib ₃	Polio ₃	MMR ₁
Q1 1999	86	83	86	86	86	79
Q2 1999	87	82	87	86	86	77
Q3 1999	86	82	86	85	86	76
Q4 1999	86	82	86	85	86	76
Q1 2000	85	82	85	85	85	76
Q2 2000	85	82	85	85	85	77
Q3 2000	87	83	87	86	86	81
Q4 2000	87	83	87	86	87	83
Q1 2001	86	82	86	85	85	79
Q2 2001	86	83	86	85	85	75
Q3 2001	83	81	83	83	83	70
Q4 2001	83	80	83	82	83	69
Q1 2002	83	81	83	82	83	70
Q2 2002	83	81	83	82	82	72
Q3 2002	83	81	83	82	82	73

Note: Prior to Q3-2002, NWHB provided DTaP/DT uptake as combined value, since not possible to accurately determine P₃ uptake for this health board, it was excluded from overall P₃ analysis

MMR₁ uptake by Health Board

In Q3-2002, national MMR₁ uptake rates at 24 months increased by 1% to 73% when compared with the previous quarter. MMR₁ uptake rates increased in ERHA (+1%), MHB (+2%), and SHB (+2%) while uptake rates remained unchanged in MWHB and SEHB. Uptake rates decreased slightly in NEHB (-2%) NWHB (-1%) and WHB (-4%) (Figure 3).

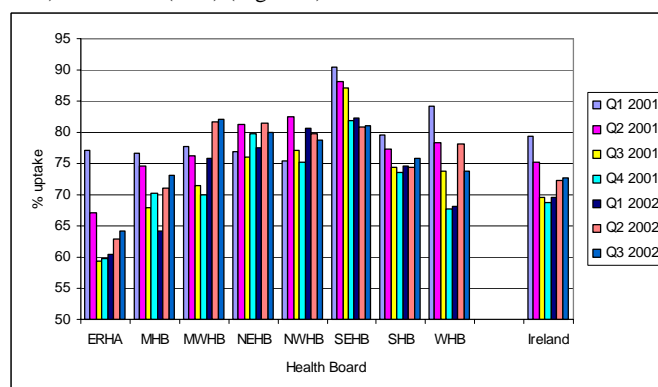


Figure 3. Quarterly MMR₁ uptake rates at 24 months by health board in 2001 and 2002 (Note: scale ranges from 50-95% uptake).

Detailed quarterly immunisation uptake statistics at 12 and 24 months for each health board are presented in Appendix 1 & 2 of this report.

References

1. Vaccination coverage statistics for children in Northern Ireland. Available over the WWW at: <http://www.cdscni.org.uk/surveillance/Coveragestats/default.asp>
2. COVER programme: July to September 2002. CDR Weekly 2003: 13(4). Available at: <http://www.phls.org.uk>

NDSC would like to thank the health boards for providing data and special thanks to the Specialists in Public Health Medicine, Immunisation Co-ordinators and Systems Analysts for their assistance.

Appendix 1. Quarterly Immunisation Uptake Rates at 12 months by Health Board

Uptake at 12 months ~ ERHA					
	D ₃	P ₃	T ₃	Hib ₃	Polio ₃
Q3 2000	75	73	75	75	75
Q4 2000	73	72	73	73	73
Q1 2001	69	67	69	69	69
Q2 2001	53	52	53	53	53
Q3 2001	61	60	61	60	59
Q4 2001	60	59	60	60	59
Q1 2002	63	63	63	63	61
Q2 2002	63	63	63	64	63
Q3 2002	71	70	71	70	70

Uptake at 12 months ~ MHB					
	D ₃	P ₃	T ₃	Hib ₃	Polio ₃
Q3 2000	70	67	70	71	71
Q4 2000	72	69	72	72	72
Q1 2001	71	68	71	71	71
Q2 2001	66	65	66	66	66
Q3 2001	61	59	61	62	60
Q4 2001	72	71	72	72	71
Q1 2002	64	62	64	64	63
Q2 2002	69	67	69	69	67
Q3 2002	79	78	79	79	79

Uptake at 12 months ~ MWHB					
	D ₃	P ₃	T ₃	Hib ₃	Polio ₃
Q3 2000	74	72	74	74	74
Q4 2000	72	71	72	72	72
Q1 2001	77	74	77	74	74
Q2 2001	69	67	69	69	69
Q3 2001	64	62	64	64	63
Q4 2001	70	68	70	70	70
Q1 2002	78	76	78	77	77
Q2 2002	81	80	81	80	81
Q3 2002	86	85	86	86	86

Uptake at 12 months ~ NEHB					
	D ₃	P ₃	T ₃	Hib ₃	Polio ₃
Q3 2000	*	*	*	*	*
Q4 2000	*	*	*	*	*
Q1 2001	*	*	*	*	*
Q2 2001	79	78	79	78	78
Q3 2001	74	73	74	76	75
Q4 2001	79	78	79	79	78
Q1 2002	84	82	84	83	84
Q2 2002	76	76	76	76	78
Q3 2002	80	80	80	80	81

* Unable to provide data for this quarter

Uptake at 12 months ~ NWHB					
	D ₃	P ₃	T ₃	Hib ₃	Polio ₃
Q3 2000	69	**	69	69	69
Q4 2000	74	**	74	74	74
Q1 2001	71	**	71	71	71
Q2 2001	83	**	83	83	82
Q3 2001	82	**	82	82	80
Q4 2001	80	**	80	79	78
Q1 2002	81	81	81	81	81
Q2 2002	84	84	84	82	84
Q3 2002	87	84	87	87	87

Uptake at 12 months ~ SEHB					
	D ₃	P ₃	T ₃	Hib ₃	Polio ₃
Q3 2000	90	87	90	90	90
Q4 2000	86	83	86	86	86
Q1 2001	87	84	87	87	86
Q2 2001	84	82	84	84	84
Q3 2001	83	81	83	83	82
Q4 2001	80	79	80	80	80
Q1 2002	81	80	81	81	81
Q2 2002	80	80	80	80	80
Q3 2002	83	82	83	83	83

Uptake at 12 months ~ SHB					
	D ₃	P ₃	T ₃	Hib ₃	Polio ₃
Q3 2000	*	*	*	*	*
Q4 2000	78	76	78	78	78
Q1 2001	76	74	76	76	75
Q2 2001	73	70	73	72	72
Q3 2001	68	66	68	69	67
Q4 2001	76	74	76	75	75
Q1 2002	77	76	77	77	77
Q2 2002	76	75	76	75	76
Q3 2002	78	77	78	78	78

Uptake at 12 months ~ WHB					
	D ₃	P ₃	T ₃	Hib ₃	Polio ₃
Q3 2000	85	83	85	85	85
Q4 2000	79	77	79	79	79
Q1 2001	80	78	80	80	80
Q2 2001	77	74	77	77	76
Q3 2001	73	71	73	71	72
Q4 2001	71	70	71	66	70
Q1 2002	68	67	68	*	68
Q2 2002	76	75	76	76	76
Q3 2002	75	74	75	75	75

* Unable to provide data for this quarter

** Uptake cannot be accurately calculated as DTaP/DT provided as combined value

Appendix 2 Quarterly Immunisation Uptake Rates at 24 months by Health Board

Uptake at 24 months ~ ERHA						
	D ₃	P ₃	T ₃	Hib ₃	Polio ₃	MMR ₁
Q1 1999	86	82	86	85	85	78
Q2 1999	85	81	85	84	85	77
Q3 1999	85	81	85	84	85	76
Q4 1999	84	80	84	84	84	76
Q1 2000	84	81	84	84	84	75
Q2 2000	84	81	84	84	84	74
Q3 2000	85	82	85	84	85	81
Q4 2000	85	82	85	84	84	81
Q1 2001	82	80	82	81	82	77
Q2 2001	82	80	82	82	82	67
Q3 2001	79	77	79	78	79	59
Q4 2001	78	76	78	78	78	60
Q1 2002	78	76	78	77	77	60
Q2 2002	78	76	78	77	77	63
Q3 2002	78	77	78	77	76	64

Uptake at 24 months ~ MHB						
	D ₃	P ₃	T ₃	Hib ₃	Polio ₃	MMR ₁
Q1 1999	83	77	83	82	82	72
Q2 1999	85	80	85	83	84	72
Q3 1999	81	77	81	80	81	68
Q4 1999	81	77	81	80	81	69
Q1 2000	83	78	83	83	84	73
Q2 2000	80	76	80	80	80	73
Q3 2000	81	77	81	80	80	75
Q4 2000	83	79	83	83	83	80
Q1 2001	82	77	82	81	81	77
Q2 2001	83	80	83	83	83	75
Q3 2001	81	79	81	81	81	68
Q4 2001	81	77	81	81	81	70
Q1 2002	78	75	78	78	78	64
Q2 2002	75	73	75	73	75	71
Q3 2002	83	80	83	82	83	73

Uptake at 24 months ~ MWHB						
	D ₃	P ₃	T ₃	Hib ₃	Polio ₃	MMR ₁
Q1 1999	82	79	82	81	82	74
Q2 1999	81	79	81	80	81	72
Q3 1999	79	77	79	79	79	73
Q4 1999	80	78	80	80	80	72
Q1 2000	76	73	76	76	76	70
Q2 2000	80	77	80	80	80	75
Q3 2000	83	80	83	82	83	78
Q4 2000	83	80	83	83	82	83
Q1 2001	82	80	82	81	82	78
Q2 2001	86	84	86	84	84	76
Q3 2001	82	80	82	81	82	71
Q4 2001	83	80	83	82	82	70
Q1 2002	86	83	86	85	86	76
Q2 2002	85	83	85	85	85	82
Q3 2002	88	85	88	87	87	82

Uptake at 24 months ~ NEHB						
	D ₃	P ₃	T ₃	Hib ₃	Polio ₃	MMR ₁
Q1 1999	84	**	84	84	84	80
Q2 1999	94	**	94	94	94	78
Q3 1999	95	**	95	95	95	78
Q4 1999	94	**	94	94	94	78
Q1 2000	91	**	91	91	91	81
Q2 2000	89	**	89	89	89	78
Q3 2000	95	**	95	95	95	79
Q4 2000	97	**	97	97	97	82
Q1 2001	94	**	94	94	94	77
Q2 2001	91	90	91	91	90	81
Q3 2001	89	88	89	89	89	76
Q4 2001	93	93	93	93	94	80
Q1 2002	91	90	91	90	90	78
Q2 2002	92	92	92	91	91	82
Q3 2002	91	90	91	91	90	80

** Uptake cannot be accurately calculated as DTaP/DT provided as combined value

Uptake at 24 months ~ NWHB						
	D ₃	P ₃	T ₃	Hib ₃	Polio ₃	MMR ₁
Q1 1999	87	**	87	86	87	76
Q2 1999	87	**	87	87	87	75
Q3 1999	86	**	86	86	86	74
Q4 1999	88	**	88	88	88	73
Q1 2000	86	**	86	86	86	74
Q2 2000	82	**	82	82	82	72
Q3 2000	83	**	83	83	83	72
Q4 2000	85	**	85	84	84	77
Q1 2001	85	**	85	85	85	75
Q2 2001	91	**	91	91	91	83
Q3 2001	90	**	90	90	90	77
Q4 2001	88	**	88	87	88	75
Q1 2002	89	89	89	88	89	81
Q2 2002	92	92	92	91	91	80
Q3 2002	93	88	93	91	91	79

Uptake at 24 months ~ SEHB						
	D ₃	P ₃	T ₃	Hib ₃	Polio ₃	MMR ₁
Q1 1999	92	87	92	92	92	90
Q2 1999	90	84	90	89	89	86
Q3 1999	88	85	88	87	88	85
Q4 1999	87	83	87	87	86	85
Q1 2000	89	85	89	88	88	86
Q2 2000	89	85	89	89	89	89
Q3 2000	91	87	91	90	91	92
Q4 2000	90	85	90	90	90	92
Q1 2001	91	87	91	91	91	90
Q2 2001	89	85	89	88	89	88
Q3 2001	90	88	90	90	90	87
Q4 2001	87	84	87	87	87	82
Q1 2002	89	86	89	88	88	82
Q2 2002	87	85	87	86	87	81
Q3 2002	86	84	86	85	85	81

Uptake at 24 months ~ SHB						
	D ₃	P ₃	T ₃	Hib ₃	Polio ₃	MMR ₁
Q1 1999	87	83	87	87	87	75
Q2 1999	86	81	86	86	86	72
Q3 1999	84	81	84	83	84	70
Q4 1999	86	81	86	85	86	73
Q1 2000	84	80	84	83	84	72
Q2 2000	84	80	84	83	84	76
Q3 2000	86	82	86	85	85	77
Q4 2000	87	83	87	86	86	82
Q1 2001	86	83	86	86	86	80
Q2 2001	85	82	85	85	85	77
Q3 2001	84	82	84	84	84	74
Q4 2001	84	81	84	83	84	74
Q1 2002	85	82	85	84	84	75
Q2 2002	83	81	83	82	83	74
Q3 2002	84	82	84	83	83	76

Uptake at 24 months ~ WHB						
	D ₃	P ₃	T ₃	Hib ₃	Polio ₃	MMR ₁
Q1 1999	92	89	92	92	92	86
Q2 1999	90	87	90	89	90	83
Q3 1999	91	87	91	90	90	81
Q4 1999	95	90	95	90	90	80
Q1 2000	92	87	92	91	92	82
Q2 2000	91	87	91	90	91	82
Q3 2000	92	87	92	91	91	84
Q4 2000	91	87	91	90	91	85
Q1 2001	91	88	91	90	91	84
Q2 2001	87	85	87	87	87	78
Q3 2001	87	85	87	86	87	74
Q4 2001	83	81	83	82	82	68
Q1 2002	84	81	84	83	83	68
Q2 2002	84	81	84	84	83	78
Q3 2002	82	81	82	82	81	74

** Uptake cannot be accurately calculated as DTaP/DT provided as combined value