

Immunisation Uptake Statistics for Ireland Quarter 1, 2001



**A report by the
National Disease Surveillance Centre**

Dr. Margaret Fitzgerald & Dr. Darina O'Flanagan

September 2001¹

¹ Updated October 2001, see revision Table 1, Page 3.

Introduction

The immunisation uptake statistics for children 12 months and 24 months of age in Quarter 1, 2001 who have received three doses of vaccines against diphtheria (D₃), pertussis (P₃), tetanus (T₃), *Haemophilus influenzae* type b (Hib₃), polio (Polio₃) and one dose of vaccine against measles, mumps and rubella (MMR₁, uptake at 24 months only) are presented in this report. These statistics relate to uptake in the cohorts born between 01/01/2000 & 31/03/2000 and 01/01/1999 & 31/03/1999.

NDSC would like to thank the health boards for providing this data and special thanks to the Specialists in Public Health Medicine and the System Analysts for their assistance.

Results

Immunisation uptake at 12 months in Quarter 1, 2001

Immunisation uptake rates in children 12 months of age in Quarter 1, 2001 are presented (Table 1). National uptake of D₃, T₃, Hib₃ and Polio₃ at 12 months was 73% (based on data from seven health boards), while P₃ uptake was 74% (based on data from six health boards). The highest uptake rates at 12 months were reported by SEHB, 84 - 87% (Table 1).

Immunisation uptake at 24 months in Quarter 1, 2001

Immunisation uptake rates in children 24 months of age in Quarter 1, 2001 are presented (Table 1). National uptake rates ranged from 86% for D₃ and T₃, 85% for Hib₃ and Polio₃, 82% for P₃ and down to 80% for MMR₁. The target 95% rate was not reached at either national or health board level.

D₃, T₃, Hib₃ and Polio₃ uptake rates ranged from 94% in NEHB down to 81-82% in ERHA, MHB and MWHB. P₃ uptake ranged from 87% in SEHB to 77% in MHB (Table 1). MMR₁ uptake ranged from 90% in SEHB down to 75% in NWHB (Table 1).

Quarterly Trends

Data on immunisation uptake at 12 months is only available since Quarter 3, 2000. In Quarter 1, 2001 immunisation uptake rates at 12 months for D₃, T₃, Hib₃ and Polio₃ in Ireland (based on data from seven health boards) dropped by 2% to 74% compared to Quarter 4, 2000 (76%) and by 3% compared to Quarter 3, 2000 (77%). P₃ uptake at 12 months in Ireland (based on data from 6 health boards) dropped from 76% in Quarter 3, 2000, to 74% in Q4, 2000 and down to 73% in Q1, 2001 (Figure 1 and Table 2).

Overall, immunisation uptake rates at 24 months in Ireland dropped in Quarter 1, 2001 by 1% for D₃, P₃, T₃ and Hib₃ compared with the previous quarter, while Polio₃ uptake rates dropped by 2% (Figure 2 and Table 3). The most dramatic reduction in Quarter 1, 2001 was seen with MMR₁ uptake, it dropped by 4% to 79% from 83% in Q4, 2000 (Figure 2 and Table 3). Compared with Quarter 4, 2000, there was a drop in MMR₁ uptake in all health boards in Q1, 2001, with a 5% decrease seen in MWHB and NEHB (Figure 3).

The quarterly immunisation uptake rates at 24 months by health board are presented in Appendix 1a and 1b.

Table 1. Immunisation uptake rates in children 12 and 24 months of age in Quarter 1, 2001

Health Board	%Uptake at 12 months Cohort born 01/01/2000 – 31/03/2000						%Uptake at 24 months Cohort born 01/01/1999 – 31/03/1999						
	Number in cohort	D ₃	P ₃	T ₃	Hib ₃	Polio ₃	Number in cohort	D ₃	P ₃	T ₃	Hib ₃	Polio ₃	MMR ₁
ERHA	5112	69	68	69	69	69	5067	82	80	82	81	82	77
MHB	817	71	68	71	71	71	828	82	77	82	81	81	77
MWHB	1266	77	74	77	74	74	1240	82	80	82	81	82	78
NEHB	*	*	*	*	*	*	1307	94	**	94	94	94	77
NWHB	732	71	**	71	71	71	756	85	**	85	85	85	75
SEHB	1523	87	84	87	87	86	1477	91	87	91	91	91	90
SHB	1959	76	74	76	76	76	1914	86	83	86	86	86	80
WHB	1159	80	78	80	80	80	1163	91	88	91	90	91	84
Total-Ireland	12568	74	73	74	74	74	13752	86	82	86	85	85	79²

* Unable to provide uptake data at 12 months

** P₃ uptake could not be accurately calculated as DTaP/DT uptake was reported as a combined value

² This figure should be 79% and not 80% as stated in original report circulated in September 2001.

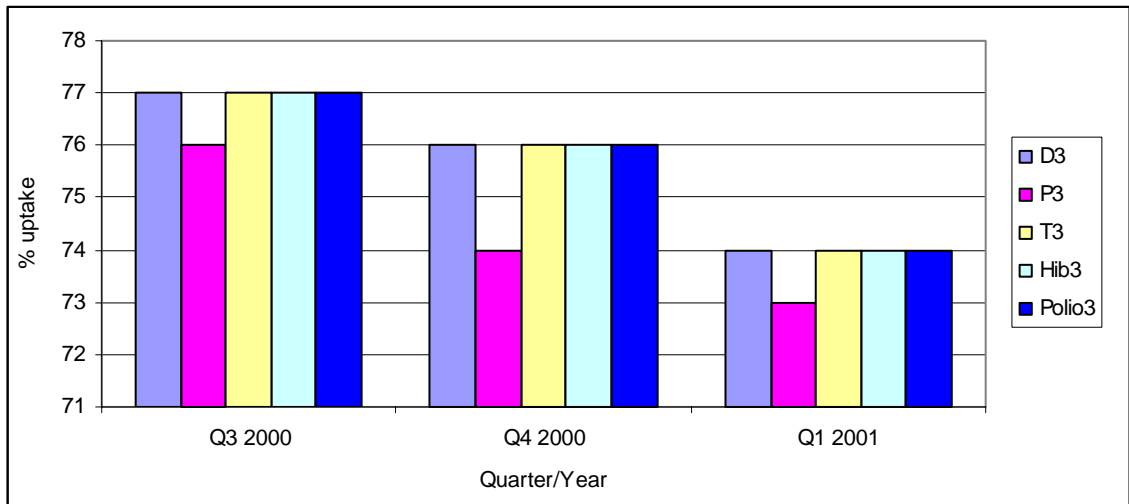


Figure 1. Quarterly immunisation uptake rates at 12 months in Ireland

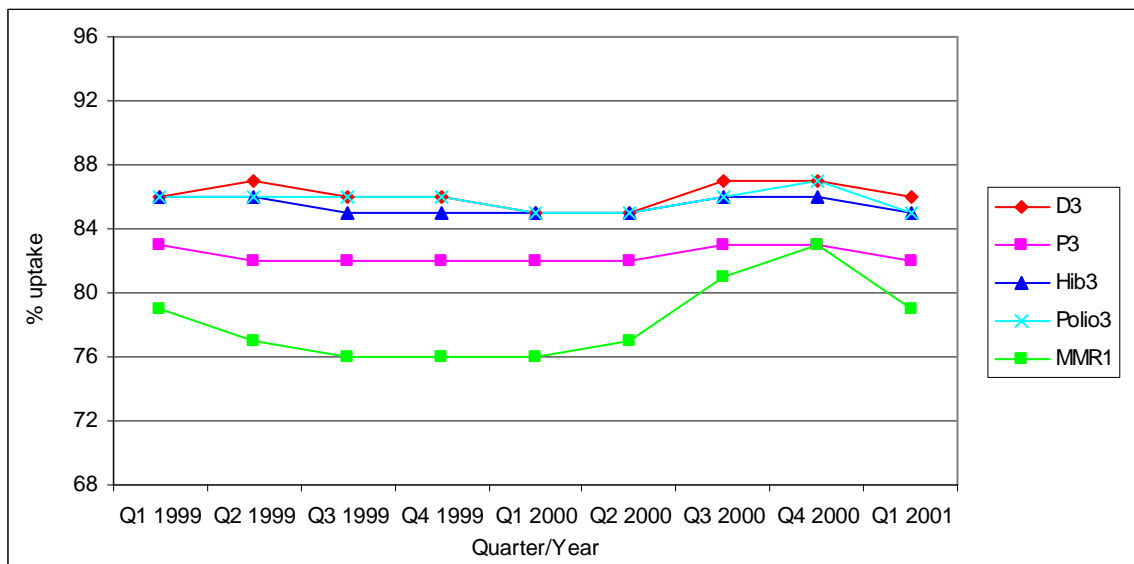


Figure 2. Quarterly immunisation uptake rates at 24 months in Ireland

Table 2. Quarterly national immunisation uptake rates (%) at 12 months

	D₃	P₃	T₃	Hib₃	Polio₃
Q3 2000	77	76	77	77	77
Q4 2000	76	74	76	76	76
Q1 2001	74	73	74	74	74

Note: NEHB unable to provide data.

NWHB provided DTaP/DT uptake as combined value. Therefore, since not possible to accurately determine P₃ uptake in NWHB, it was excluded from P₃ analysis

Table 3. Quarterly national immunisation uptake rates (%) at 24 months

	D₃	P₃	T₃	Hib₃	Polio₃	MMR₁
Q1 1999	86	83	86	86	86	79
Q2 1999	87	82	87	86	86	77
Q3 1999	86	82	86	85	86	76
Q4 1999	86	82	86	85	86	76
Q1 2000	85	82	85	85	85	76
Q2 2000	85	82	85	85	85	77
Q3 2000	87	83	87	86	86	81
Q4 2000	87	83	87	86	87	83
Q1 2001	86	82	86	85	85	79

Note: NEHB and NWHB provided DTaP/DT uptake as combined value. Therefore, since not possible to accurately determine P₃ uptake for these health boards, these were excluded from P₃ analysis

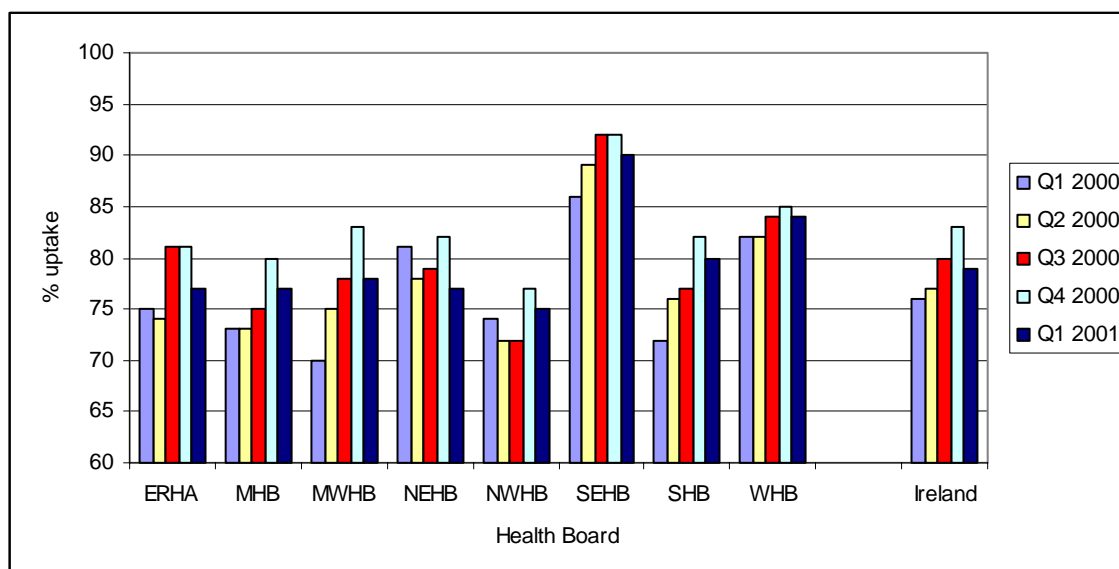
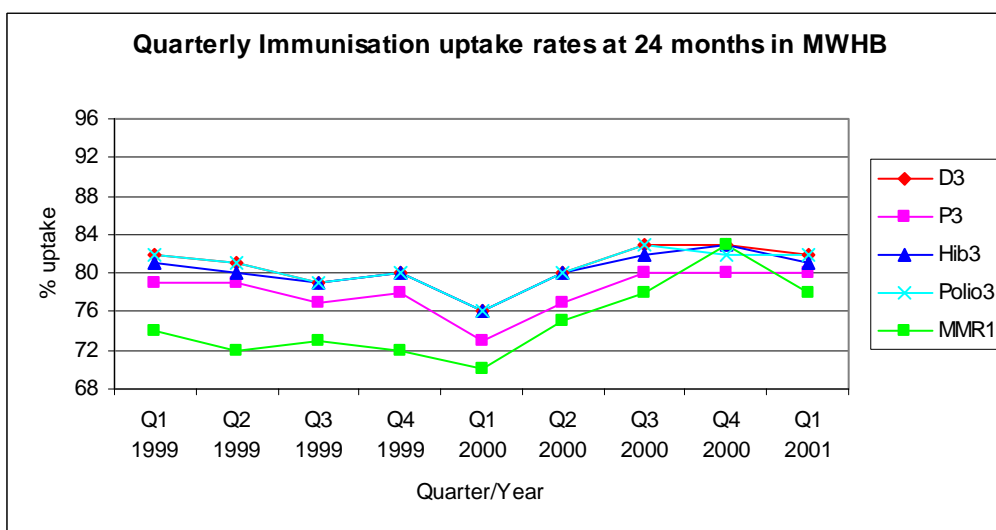
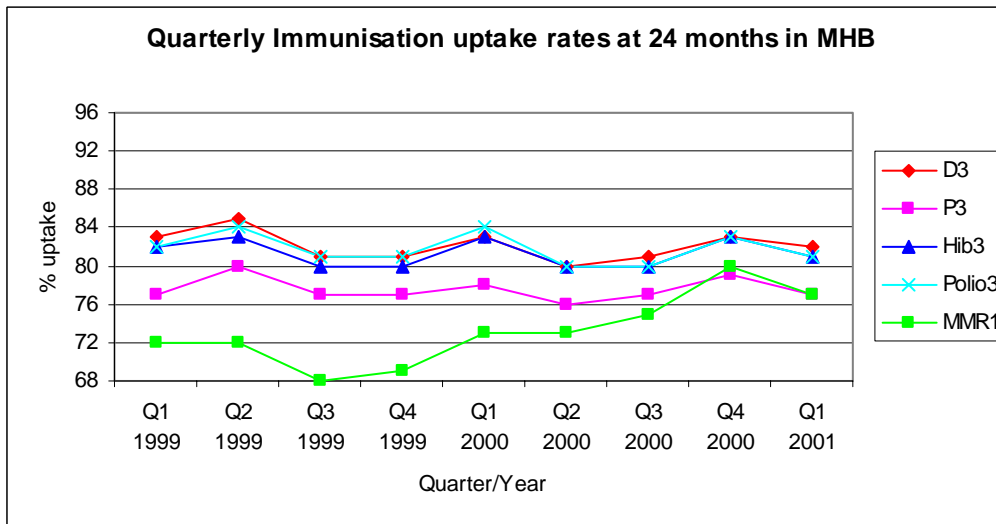
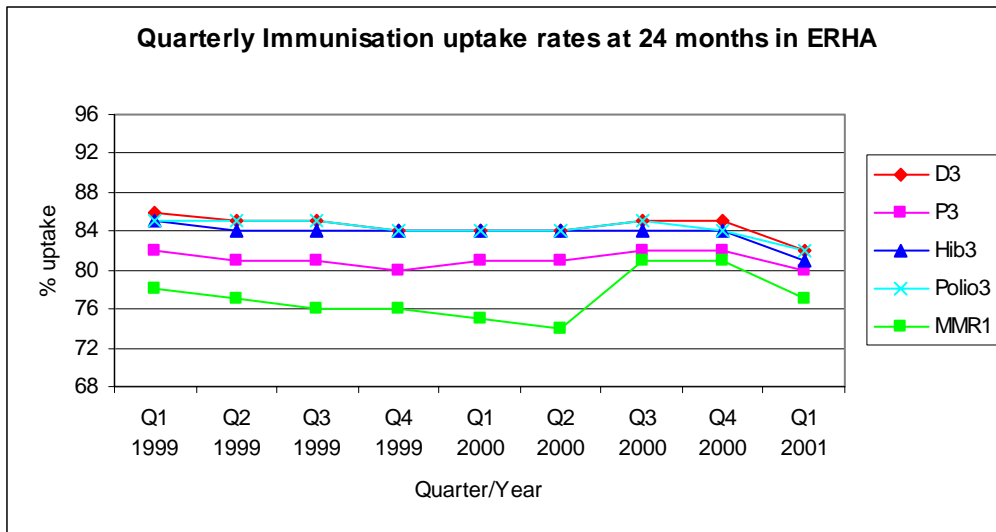
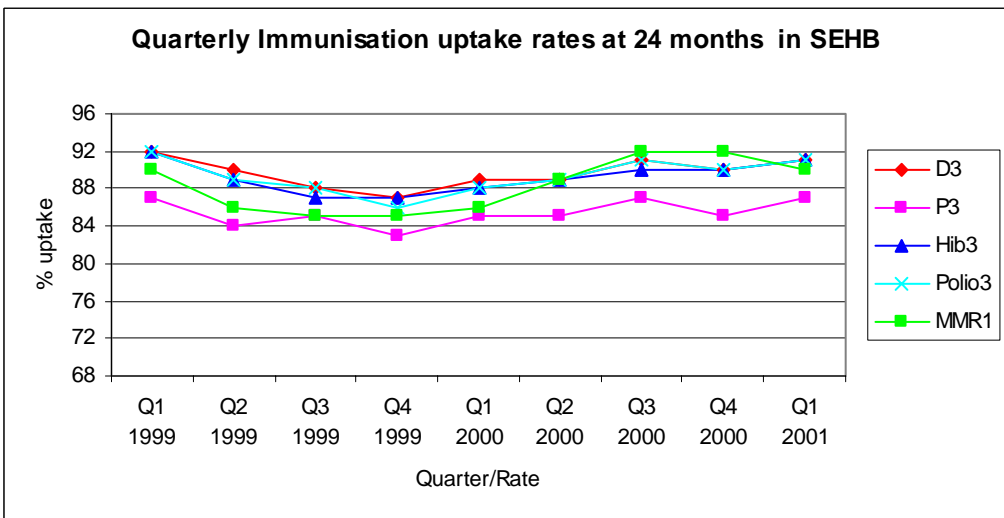
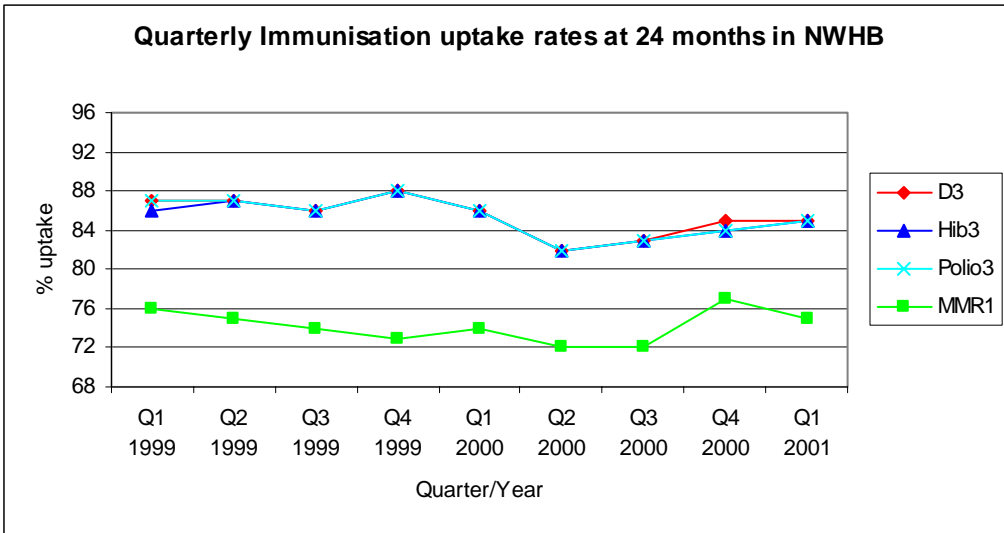
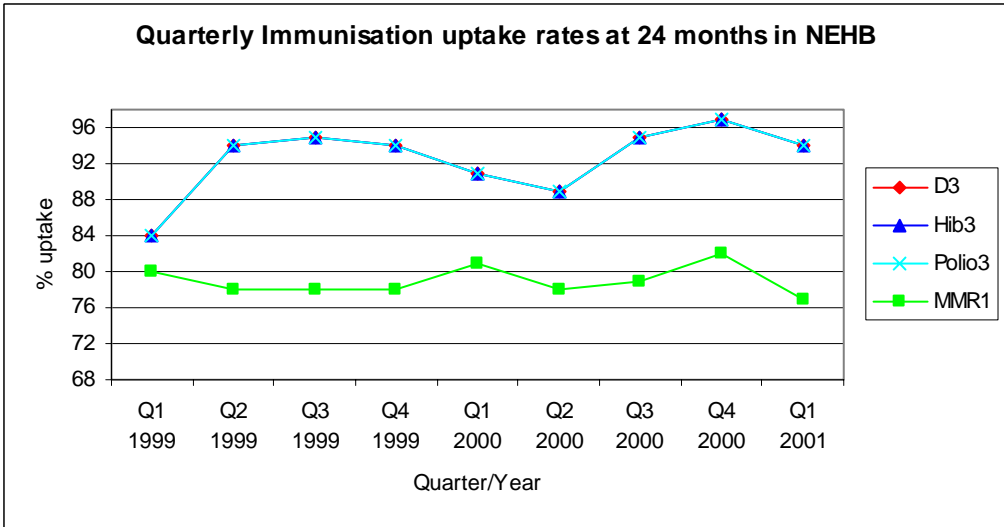
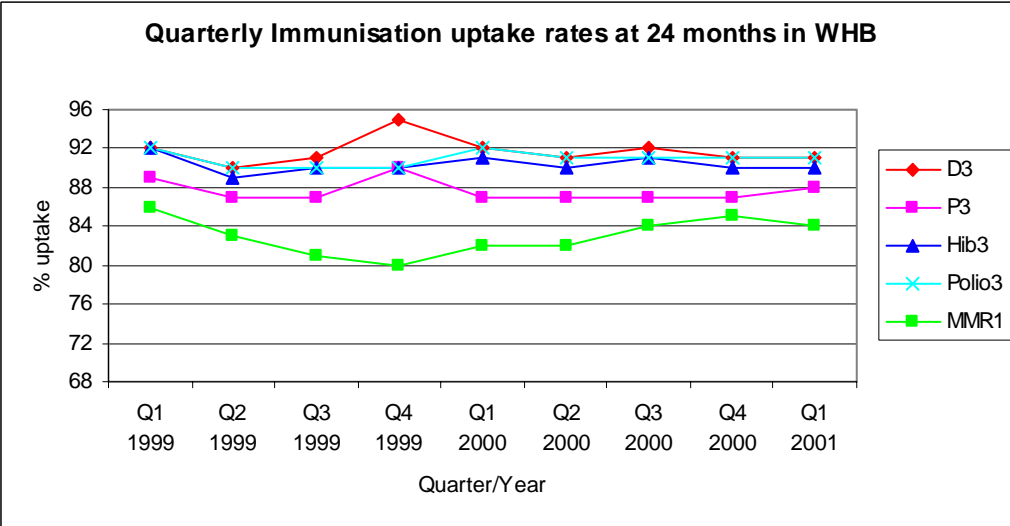
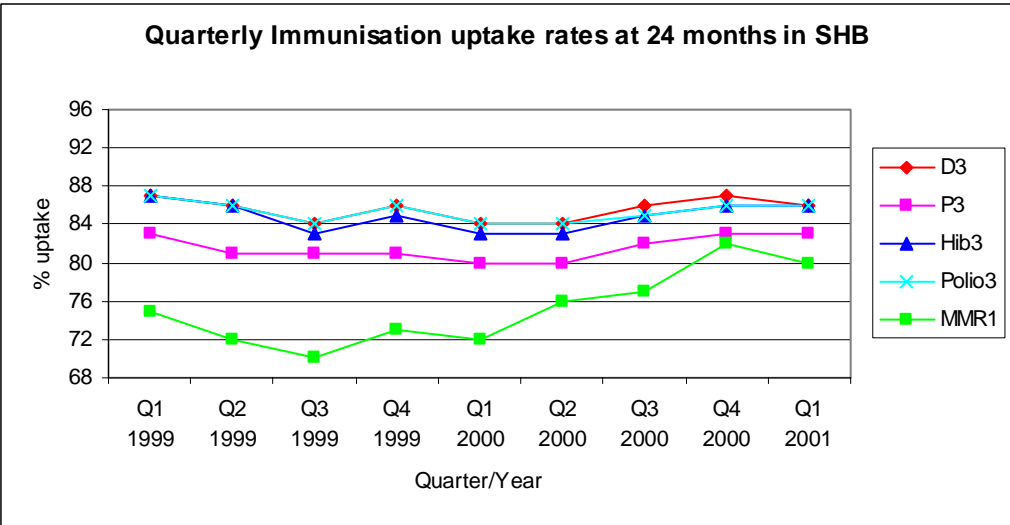


Figure 3. Quarterly MMR₁ uptake rates at 24 months by health board

Appendix 1a. Quarterly Immunisation uptake rates at 24 months by Health Board







Appendix 1b. Quarterly Immunisation uptake rates at 24 months by Health Board

Uptake at 24 months ~ ERHA						
	D₃	P₃	T₃	Hib₃	Polio₃	MMR1
Q1 1999	86	82	86	85	85	78
Q2 1999	85	81	85	84	85	77
Q3 1999	85	81	85	84	85	76
Q4 1999	84	80	84	84	84	76
Q1 2000	84	81	84	84	84	75
Q2 2000	84	81	84	84	84	74
Q3 2000	85	82	85	84	85	81
Q4 2000	85	82	85	84	84	81
Q1 2001	82	80	82	81	82	77

Uptake at 24 months ~ MHB						
	D₃	P₃	T₃	Hib₃	Polio₃	MMR1
Q1 1999	83	77	83	82	82	72
Q2 1999	85	80	85	83	84	72
Q3 1999	81	77	81	80	81	68
Q4 1999	81	77	81	80	81	69
Q1 2000	83	78	83	83	84	73
Q2 2000	80	76	80	80	80	73
Q3 2000	81	77	81	80	80	75
Q4 2000	83	79	83	83	83	80
Q1 2001	82	77	82	81	81	77

Uptake at 24 months ~ MWHB						
	D₃	P₃	T₃	Hib₃	Polio₃	MMR1
Q1 1999	82	79	82	81	82	74
Q2 1999	81	79	81	80	81	72
Q3 1999	79	77	79	79	79	73
Q4 1999	80	78	80	80	80	72
Q1 2000	76	73	76	76	76	70
Q2 2000	80	77	80	80	80	75
Q3 2000	83	80	83	82	83	78
Q4 2000	83	80	83	83	82	83
Q1 2001	82	80	82	81	82	78

Uptake at 24 months ~ NEHB						
	D₃	P₃	T₃	Hib₃	Polio₃	MMR1
Q1 1999	84		84	84	84	80
Q2 1999	94		94	94	94	78
Q3 1999	95		95	95	95	78
Q4 1999	94		94	94	94	78
Q1 2000	91		91	91	91	81
Q2 2000	89		89	89	89	78
Q3 2000	95		95	95	95	79
Q4 2000	97		97	93	97	82
Q1 2001	94		94	94	94	77

Uptake at 24 months ~ NWHB						
	D ₃	P ₃	T ₃	Hib ₃	Polio ₃	MMR1
Q1 1999	87		87	86	87	76
Q2 1999	87		87	87	87	75
Q3 1999	86		86	86	86	74
Q4 1999	88		88	88	88	73
Q1 2000	86		86	86	86	74
Q2 2000	82		82	82	82	72
Q3 2000	83		83	83	83	72
Q4 2000	85		85	84	84	77
Q1 2001	85		85	85	85	75

Uptake at 24 months ~ SEHB						
	D ₃	P ₃	T ₃	Hib ₃	Polio ₃	MMR1
Q1 1999	92	87	92	92	92	90
Q2 1999	90	84	90	89	89	86
Q3 1999	88	85	88	87	88	85
Q4 1999	87	83	87	87	86	85
Q1 2000	89	85	89	88	88	86
Q2 2000	89	85	89	89	89	89
Q3 2000	91	87	91	90	91	92
Q4 2000	90	85	90	90	90	92
Q1 2001	91	87	91	91	91	90

Uptake at 24 months ~ SHB						
	D ₃	P ₃	T ₃	Hib ₃	Polio ₃	MMR1
Q1 1999	87	83	87	87	87	75
Q2 1999	86	81	86	86	86	72
Q3 1999	84	81	84	83	84	70
Q4 1999	86	81	86	85	86	73
Q1 2000	84	80	84	83	84	72
Q2 2000	84	80	84	83	84	76
Q3 2000	86	82	86	85	85	77
Q4 2000	87	83	87	86	86	82
Q1 2001	86	83	86	86	86	80

Uptake at 24 months ~ WHB						
	D ₃	P ₃	T ₃	Hib ₃	Polio ₃	MMR1
Q1 1999	92	89	92	92	92	86
Q2 1999	90	87	90	89	90	83
Q3 1999	91	87	91	90	90	81
Q4 1999	95	90	95	90	90	80
Q1 2000	92	87	92	91	92	82
Q2 2000	91	87	91	90	91	82
Q3 2000	92	87	92	91	91	84
Q4 2000	91	87	91	90	91	85
Q1 2001	91	88	91	90	91	84