

**Immunisation Uptake Statistics
for Ireland
Quarter 4, 2000**



**A report by the
National Disease Surveillance Centre**

Dr. Margaret Fitzgerald & Dr. Darina O'Flanagan

May 2001

Introduction

In this report the immunisation statistics for children 12 months and 24 months of age in Quarter 4 2000 are presented. These uptake statistics relate to uptake in the cohorts born between 01/10/1999 & 31/12/1999 and 01/10/1998 & 31/12/1998.

Annual figures on immunisation uptake are also presented.

NDSC would like to thank the health boards for providing this data and special thanks to the Specialists in Public Health Medicine and the System Analysts for their assistance.

Results

Immunisation uptake at 12 months in Quarter 4 2000

Immunisation uptake rates in children 12 months of age in Quarter 4 2000 who have received three doses of vaccines against diphtheria (D₃), pertussis (P₃), tetanus (T₃), *Haemophilus influenzae* type b (Hib₃) and polio (Polio₃) are presented (Table 1).

National uptake of D₃, P₃, Hib₃ and Polio₃ at 12 months was 76% (based on figures from seven health boards). Uptake at 12 months for T₃ was 74% (based on data from six health boards). The highest uptake rates at 12 months for D₃, T₃, Hib₃ and Polio₃ were reported by SEHB – 86%. The national uptake rates for Quarter 4 2000 are quite similar to those reported for the previous quarter (~77%).

Immunisation uptake at 24 months in Quarter 4 2000

Apart from the NEHB the quarterly immunisation uptake rates for children 24 months of age in Quarter 4 2000 for D₃, P₃, Hib₃ and Polio₃ did not reach the target 95% rate (Table 1 and Fig. 1). D₃ and T₃ uptake ranged from 83% in both MHB and MWHB to 97% in NEHB. P₃ uptake ranged from 79% in MHB to 87% in WHB (NEHB and NWHB not included in P₃ analysis as DTaP/DT uptake reported as a combined value). Polio₃ and Hib₃ ranged from 82 and 83% respectively in MWHB to 97% for both these vaccines in NEHB (Table 1 and Fig. 1).

The national MMR₁ uptake rate in Q4 2000 was 83%, once again falling far short of the target 95% rate. MMR₁ uptake ranged from 77% in NWHB to 92% in SEHB (Table 1 and Fig. 1).

Table 1. Immunisation uptake rates in children 12 and 24 months of age in Quarter 4 2000

Health Board	% Uptake at 12 months Cohort born 01/10/1999 – 31/12/1999					% Uptake at 24 months Cohort born 01/10/1998 – 31/12/1998					
	D ₃	P ₃	T ₃	Hib ₃	Polio ₃	D ₃	P ₃	T ₃	Hib ₃	Polio ₃	MMR ₁
ERHA	74	72	74	73	73	85	82	85	84	84	81
MHB	72	69	72	72	72	83	79	83	83	83	80
MWHB	72	71	72	72	72	83	80	83	83	82	83
NEHB	*	*	*	*	*	97	**	97	97	97	82
NWHB	75	**	75	75	74	85	**	85	84	84	77
SEHB	86	83	86	86	86	90	85	90	90	90	92
SHB	78	76	78	78	78	87	83	87	86	86	82
WHB	79	77	79	79	79	91	87	91	90	91	85
Total - Ireland	76	74	76	76	76	87	83	87	86	87	83

* Unable to provide uptake data at 12 months

** P₃ uptake could not be accurately calculated as DTaP/DT uptake was reported as a combined value

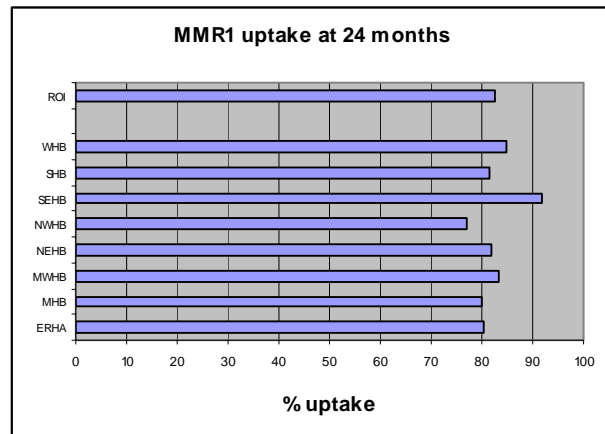
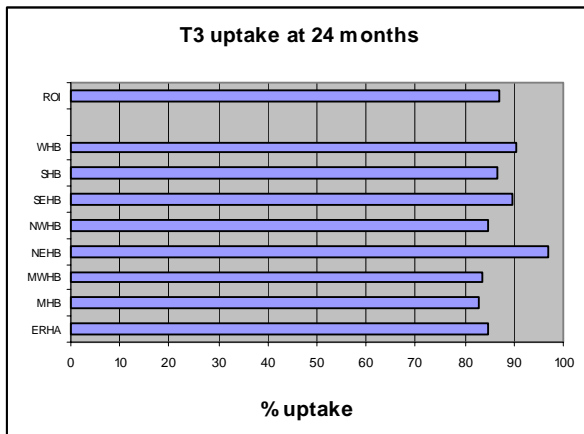
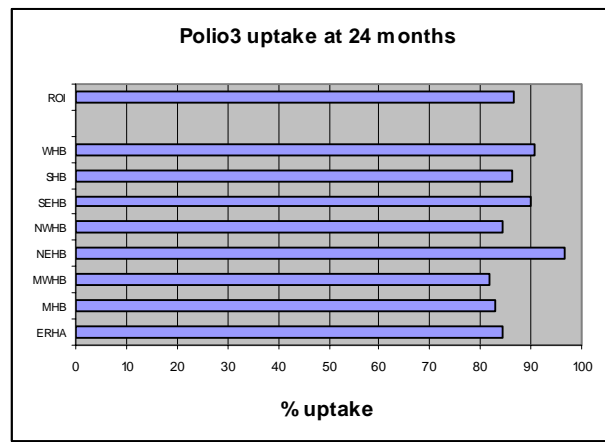
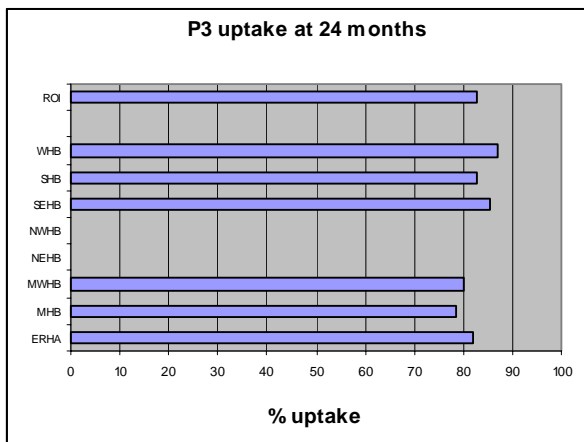
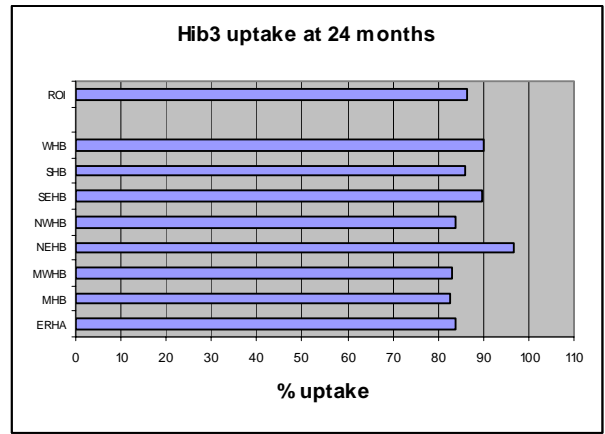
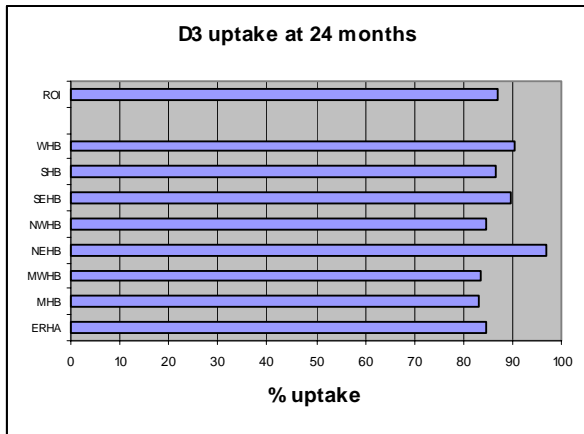


Fig. 1. Immunisation uptake in children at 24 months of age in Quarter 4, 2000
(i.e. cohort born between 01/10/1998 and 31/12/1998)

Quarterly Trends

Quarterly national uptake rates of D₃, T₃, P₃, Hib₃, Polio₃ and MMR₁ at 24 months for 1999 and 2000 are presented in Fig. 2 & Table 2. T₃ uptake is not presented on Fig. 2, as the figures are identical to D₃ uptake levels. Polio₃ uptake at 24 months increased from 86% in Quarter 3 2000 to 87% in Quarter 4 2000, whereas D₃, P₃, T₃ and Hib₃ uptake at 24 months remained unchanged from Quarter 3 2000 (Fig. 2 and Table 2).

The national MMR₁ uptake rate continued to rise in Quarter 4 2000 increasing from 80% in Quarter 3 to 82% in Quarter 4. Since the commencement of the collection of the quarterly immunisation statistics in 1999, this has been the highest MMR₁ uptake rate recorded to date (Fig. 2 and Table 2).

When compared with Quarter 3 2000 MMR₁ uptake in this quarter had increased by 5-6% in the MHB, MWHB, NWHB and SHB, which is very encouraging. MMR₁ uptake rate in SEHB was unchanged between these two quarters, remaining at an impressive 92%, which is 9% higher than the national uptake rate (Table 3).

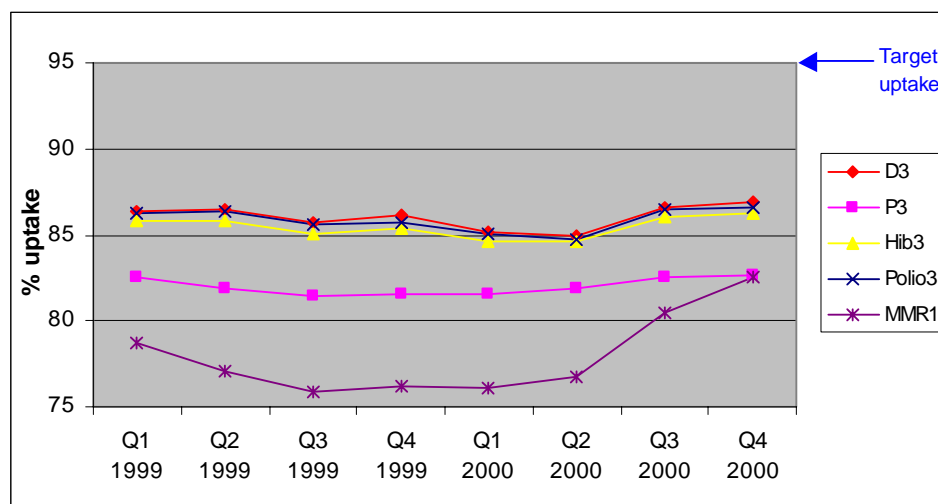


Fig. 2. Quarterly national immunisation uptake rates (%) of D₃, P₃, Hib₃, Polio₃ and MMR₁ at 24 months

Table 2. Quarterly national immunisation uptake rates (%) of D₃, P₃, Hib₃, Polio₃ and MMR₁ at 24 months

	D₃	P₃	T₃	Hib₃	Polio₃	MMR₁
Q1 1999	86	83	86	86	86	79
Q2 1999	86	82	86	86	86	77
Q3 1999	86	81	86	85	86	76
Q4 1999	86	82	86	85	86	76
Q1 2000	85	82	85	85	85	76
Q2 2000	85	82	85	85	85	77
Q3 2000	87	83	87	86	86	80
Q4 2000	87	83	87	86	87	82

Table 3. Quarterly MMR₁ uptake rates (%) at 24 months by Health Board in 2000

Health Board	Q1	Q2	Q3	Q4	Total - 2000
ERHA	75	74	81	81	77
MHB	73	73	74	80	75
MWHB	70	75	78	83	77
NEHB	81	78	79	82	80
NWHB	74	72	72	77	74
SEHB	86	89	92	92	90
SHB	72	76	77	82	77
WHB*	82	82	84	85	83
Ireland	76	77	80	83	79

* WHB have revised MMR uptake figure for Quarter 3 since that report was produced by NDSC in January 2001

Annual Trends

The annual immunisation uptake rates in children 24 months of age in 1999 and 2000 are presented in Fig. 3 (national rates) and Table 4 (health board and national rates). These rates were calculated from the quarterly data submitted by the health boards. At national level the most noteworthy difference between the two years was the increase of MMR₁ uptake from 76.9% in 1999 to 78.9% in 2000. Compared to 1999 MMR₁ uptake at 24 months in 2000 increased by 3-5% in MHB, MWHB, SEHB and SHB. Overall in 2000 uptake actually decreased by 1% in NWHB (Table 4).

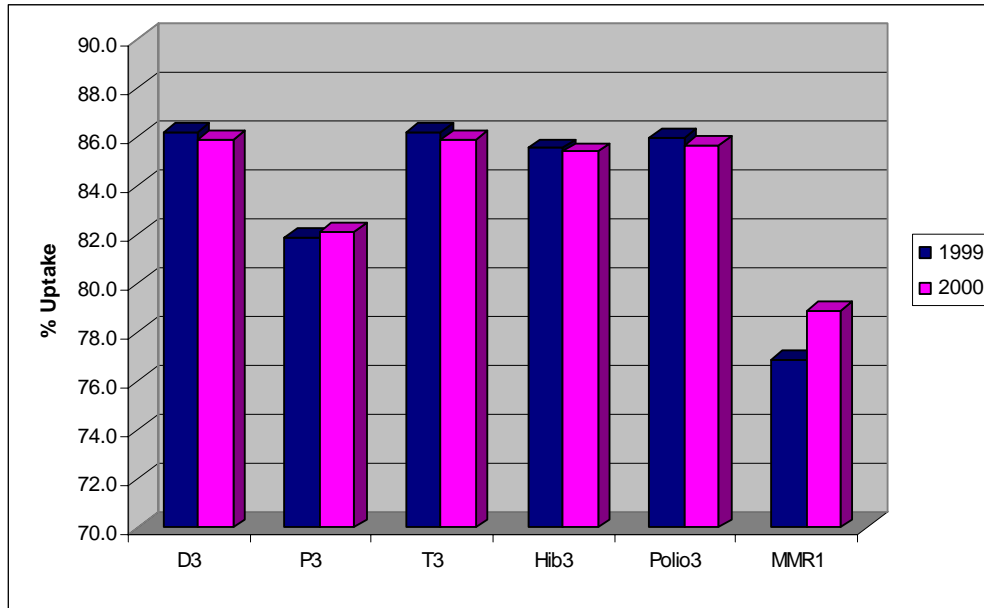


Fig. 3. Annual immunisation uptake rates (%) at 24 months for Ireland in 1999 and 2000 (Note scale ranges from 70-90% on this figure)

Table 4. Annual immunisation uptake rates at 24 months by health board in 1999 and 2000

Health Board	% Uptake at 24 months in 1999						% Uptake at 24 months in 2000					
	D ₃	P ₃	T ₃	Hib ₃	Polio ₃	MMR ₁	D ₃	P ₃	T ₃	Hib ₃	Polio ₃	MMR ₁
ERHA	84.8	81.1	84.8	84.0	84.7	76.6	84.6	81.5	84.6	83.9	84.4	77.3
MHB	82.0	77.7	82.0	81.4	82.0	70.1	81.8	77.5	81.8	81.4	81.6	75.0
MWHB	80.6	78.1	80.6	79.9	80.4	72.9	80.7	77.6	80.7	80.3	80.2	76.9
NEHB	91.8	**	91.8	91.8	91.8	78.3	92.9	**	92.9	92.8	92.8	80.1
NWHB	87.0	83.3	87.0	86.7	86.8	74.6	84.0	**	84.0	83.5	83.7	73.6
SEHB	89.0	84.8	89.0	88.7	88.8	86.6	89.6	85.4	89.6	89.3	89.5	89.7
SHB	85.8	81.5	85.8	85.2	85.7	72.5	84.9	81.0	84.9	84.4	84.6	76.8
WHB	91.7	88.2	91.7	90.2	90.5	82.5	91.1	86.8	91.1	90.6	91.0	83.1
Ireland	86.2	81.9	86.2	85.5	86.0	76.9	85.9	82.1	85.9	85.4	85.7	78.9

** P3 uptake could not be accurately calculated as DTaP/DT uptake was reported as a combined value