



# Winter infections report 2022/2023

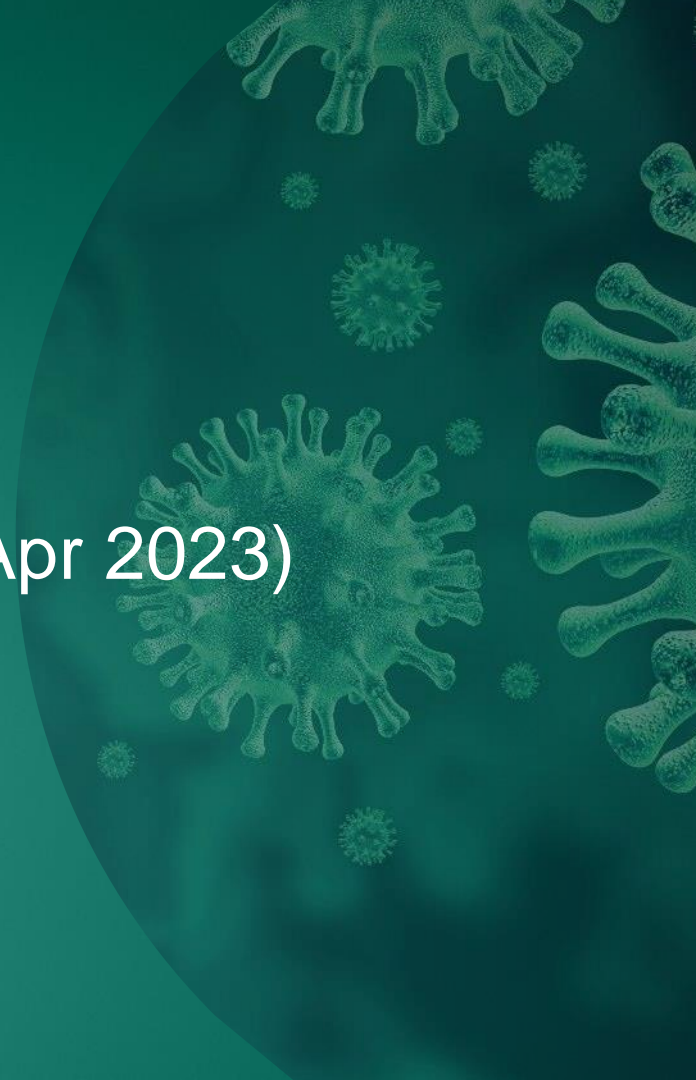
*An overview of the epidemiology*





# COVID-19 Epidemiology

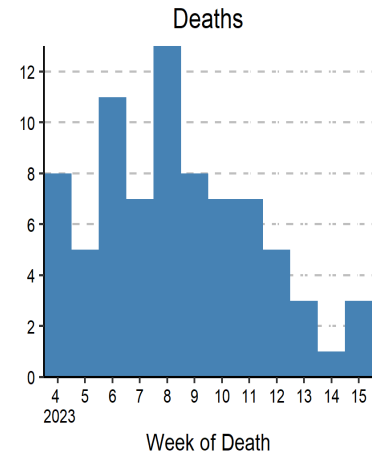
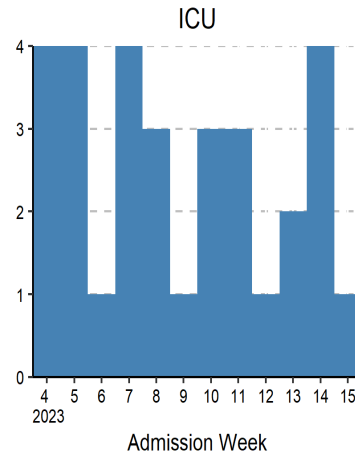
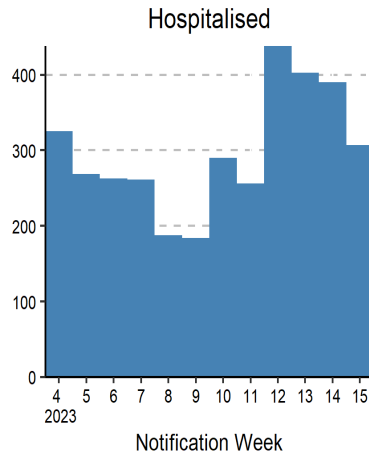
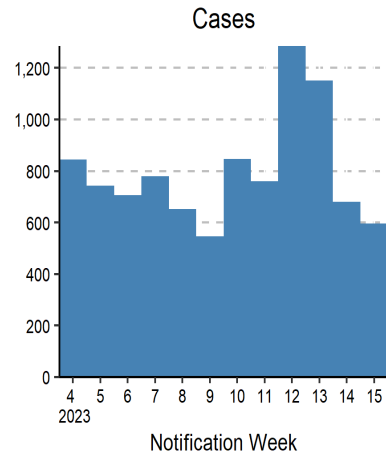
Week 15 2023 (09 Apr 2023 – 15 Apr 2023)





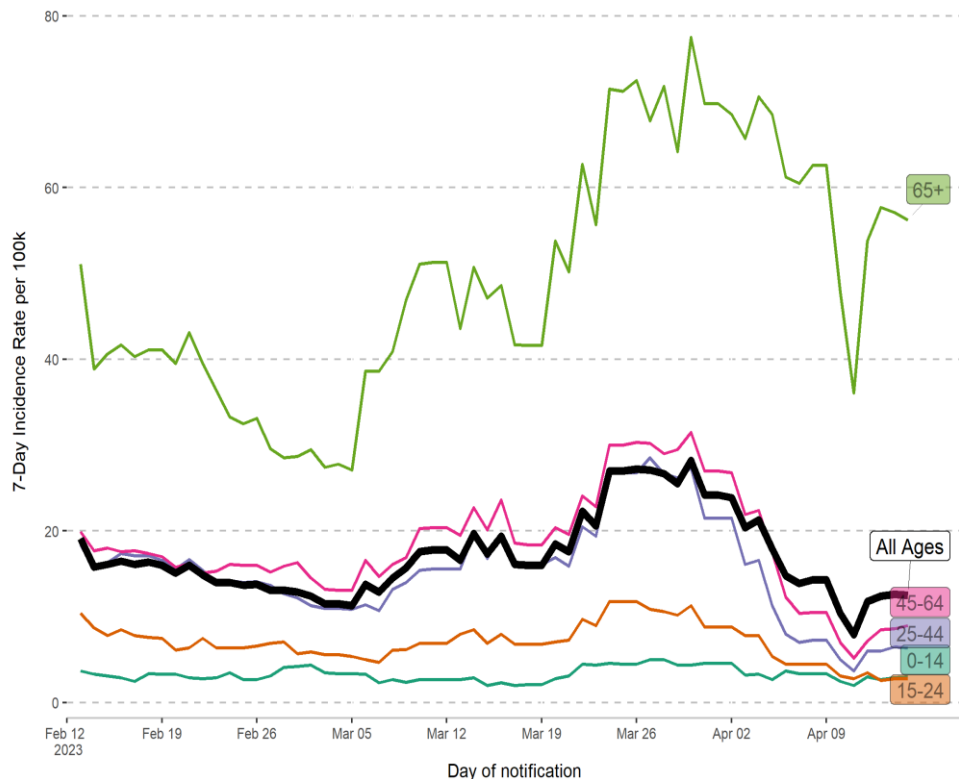
# Summary indicator and recent trends – COVID-19

	W13	W14	W15		Since Wk40
Cases	1,151	680	596	-12%↓	42,153
Hospitalised	403	390	307	-21%↓	11,377
Admitted to ICU	2	4	1	■	128
Deaths	3	1	3	■	616





# 7-day incidence rate per 100,000 population



	W14	W15	
All Ages	14	12	-13% ↓
65+	63	56	-10% ↓
45-64	10	9	-14% ↓
25-44	7	6	■
15-24	4	3	■
0-14	3	3	■

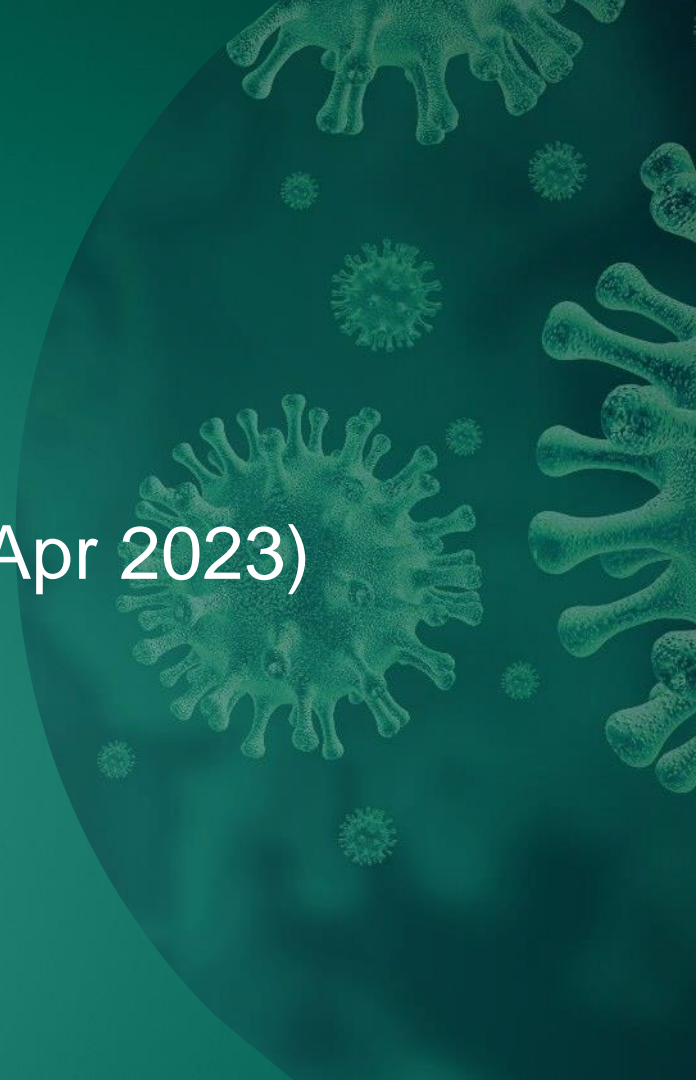
7-day incidence rate is a rolling calculation. Table shows the rates at the end of last and previous weeks

COVID-19 Epidemiology of COVID-19 in Ireland (HPSC data hub) [Epidemiology of COVID-19 HPSC \(arcgis.com\)](https://arcgis.com)



# Influenza Epidemiology

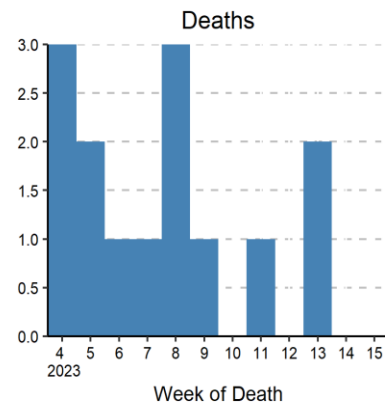
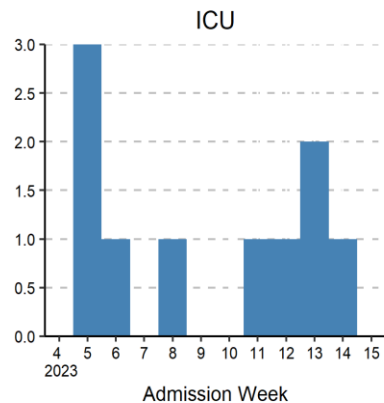
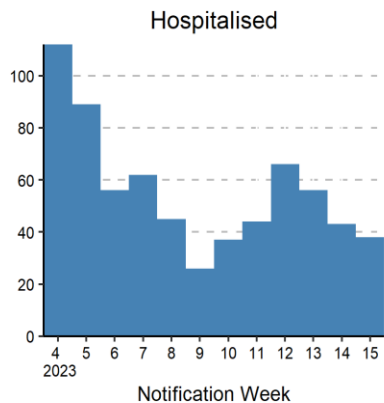
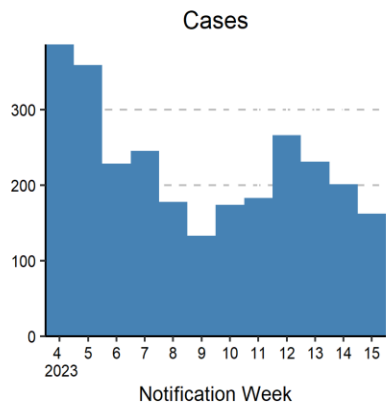
Week 15 2023 (09 Apr 2023 – 15 Apr 2023)





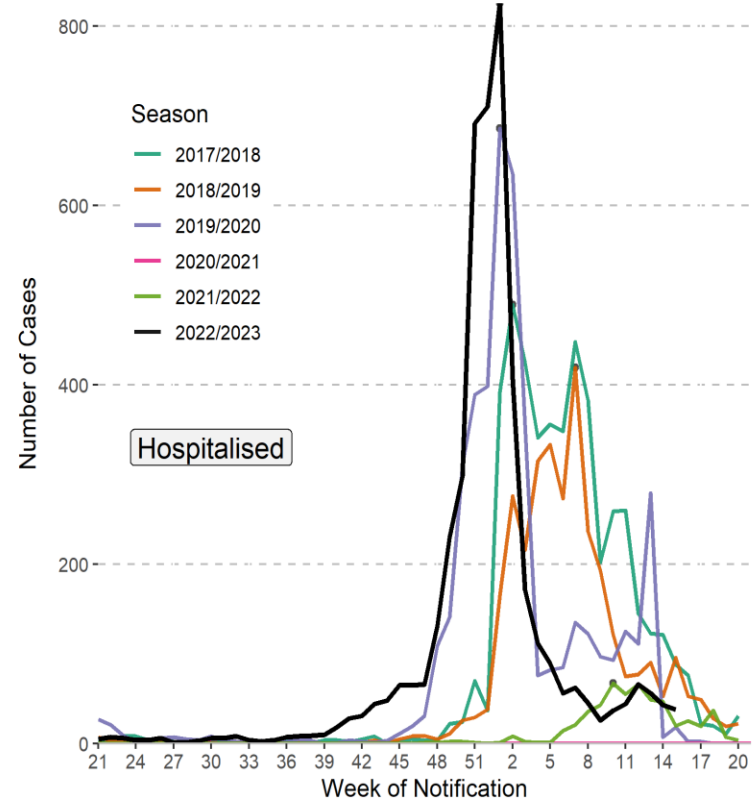
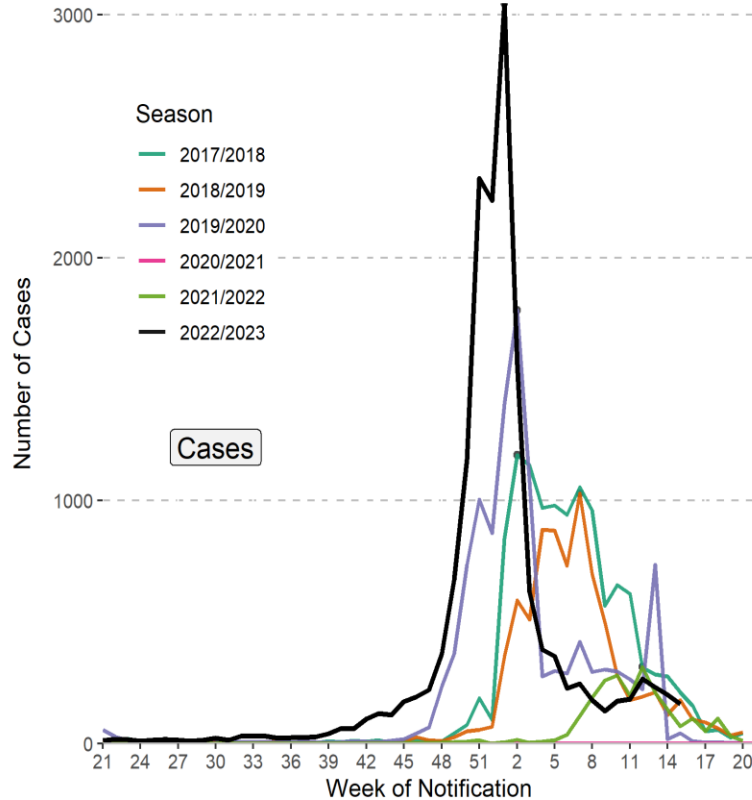
# Number of influenza cases, hospitalisations, ICU admissions and deaths

	W13	W14	W15		Since Wk40
Cases	231	201	162	-19%↓	15,743
Hospitalised	56	43	38	-12%↓	4,483
Admitted to ICU	2	1	0	■	180
Deaths	0	0	0	■	192





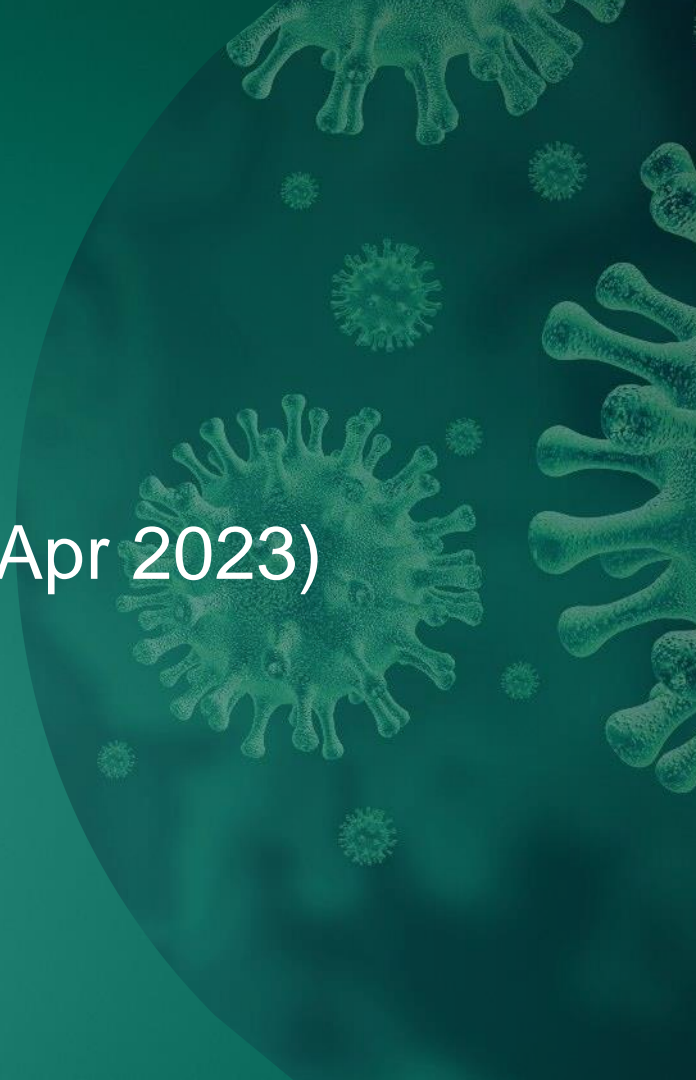
# Influenza cases and hospitalisation trends





# RSV Epidemiology

Week 15 2023 (09 Apr 2023 – 15 Apr 2023)

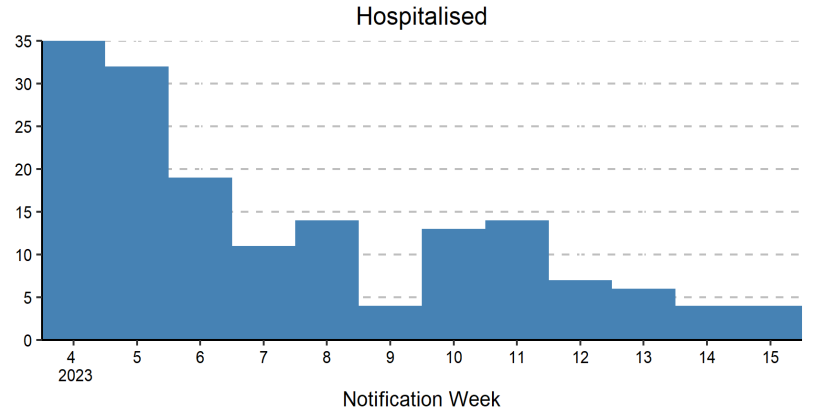
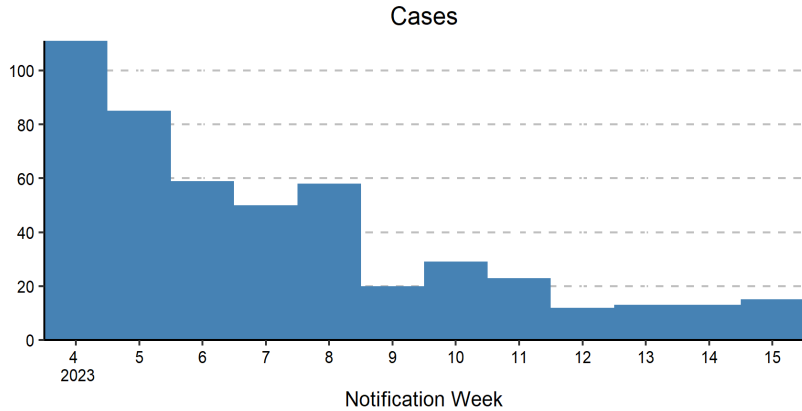






# Number of RSV cases and hospitalisations

	W13	W14	W15		Since Wk40
Cases	13	13	15	15%↑	7,358
Hospitalised	6	4	4	■	2,922





# RSV cases and hospitalisation trends

