



Winter infections report 2022/2023

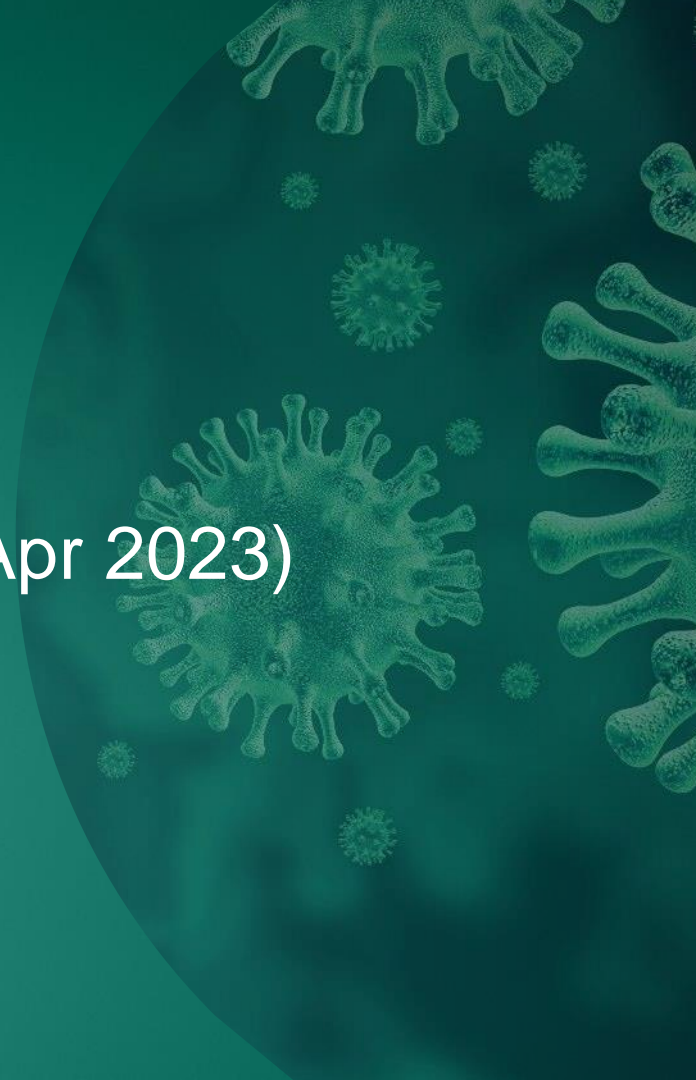
An overview of the epidemiology





COVID-19 Epidemiology

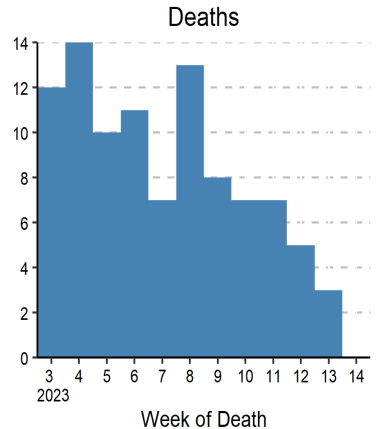
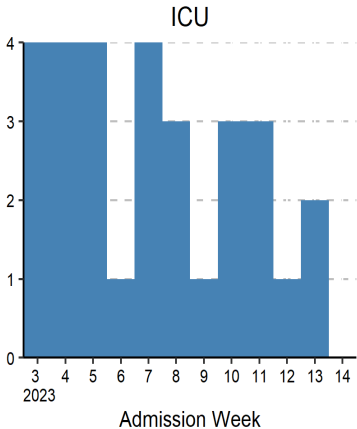
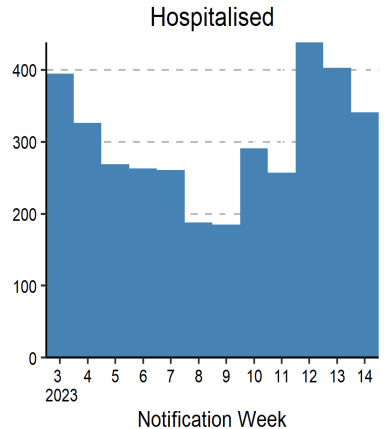
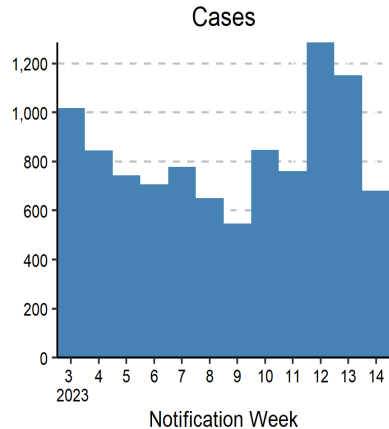
Week 14 2023 (02 Apr 2023 – 08 Apr 2023)





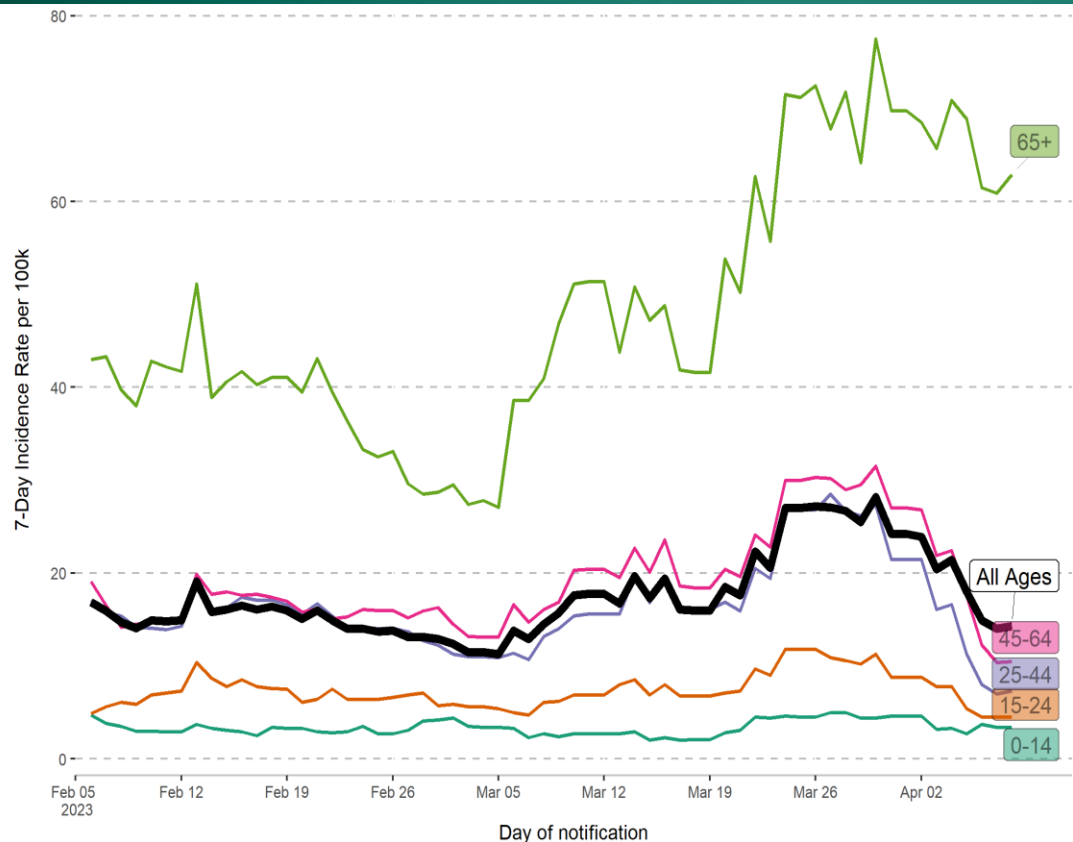
Summary indicator and recent trends – COVID-19

	W12	W13	W14		Since Wk40
Cases	1,285	1,151	682	-41%↓	41,561
Hospitalised	438	403	341	-15%↓	11,026
Admitted to ICU	1	2	0	■	123
Deaths	5	3	0	■	609





7-day incidence rate per 100,000 population



	W13	W14	
All Ages	24	14	-41% ↓
65+	70	63	-10% ↓
45-64	27	10	-61% ↓
25-44	22	7	-66% ↓
15-24	9	4	■
0-14	5	3	■

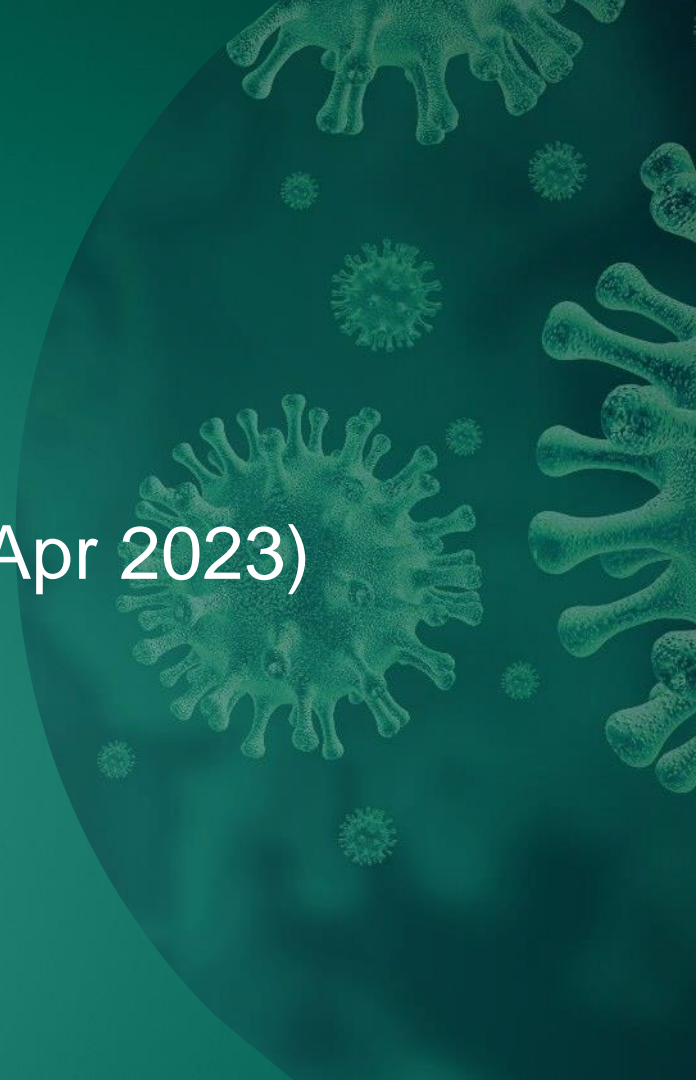
7-day incidence rate is a rolling calculation. Table shows the rates at the end of last and previous weeks

COVID-19 Epidemiology of COVID-19 in Ireland (HPSC data hub) [Epidemiology of COVID-19 HPSC \(arcgis.com\)](https://arcgis.com)



Influenza Epidemiology

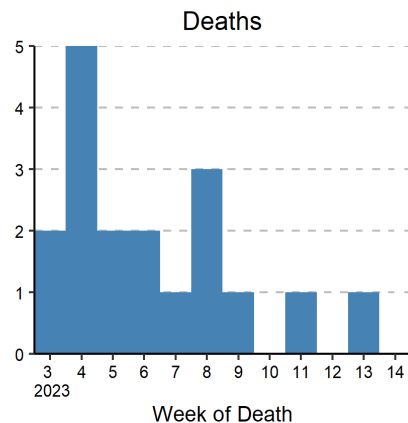
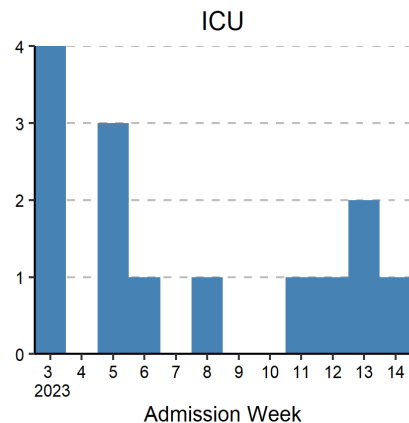
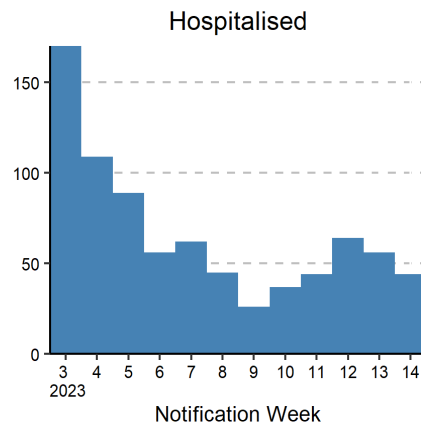
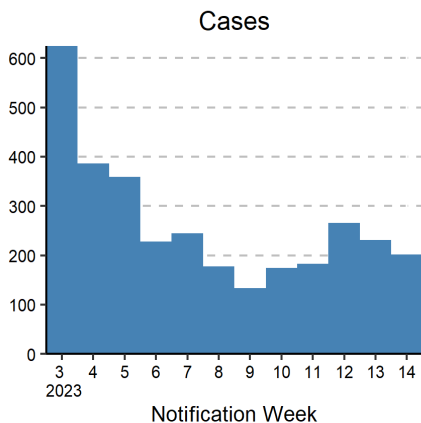
Week 14 2023 (02 Apr 2023 – 08 Apr 2023)





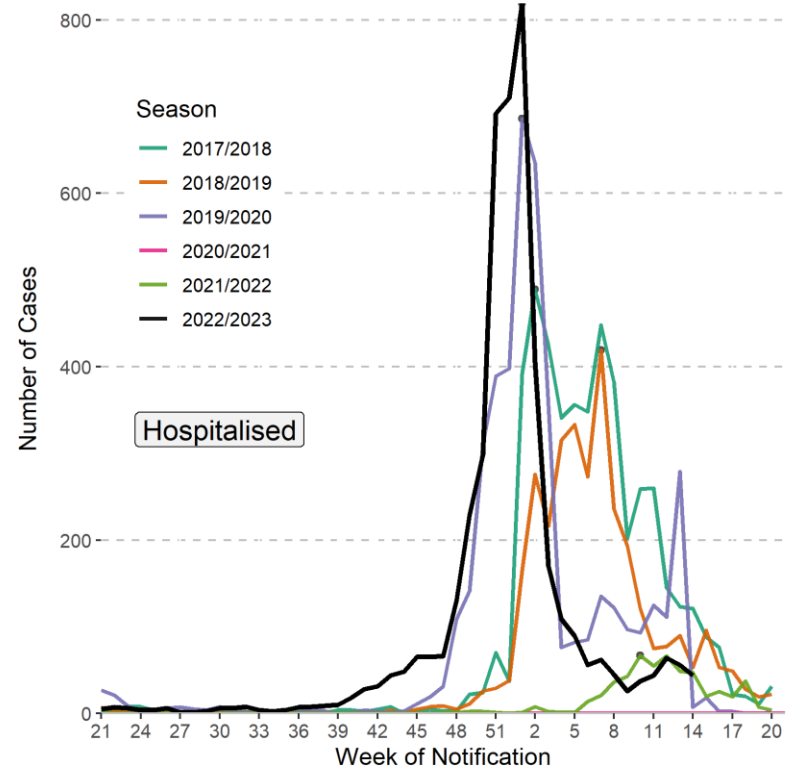
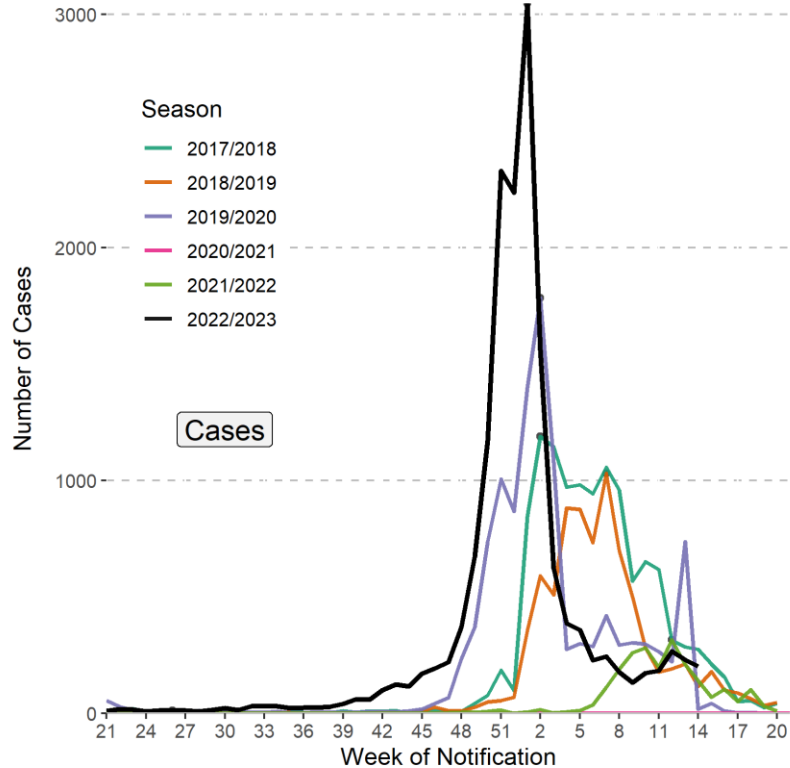
Number of influenza cases, hospitalisations, ICU admissions and deaths

	W12	W13	W14		Since Wk40
Cases	266	231	202	-13%↓	15,582
Hospitalised	64	56	44	-21%↓	4,433
Admitted to ICU	1	2	1	■	180
Deaths	0	0	0	■	190





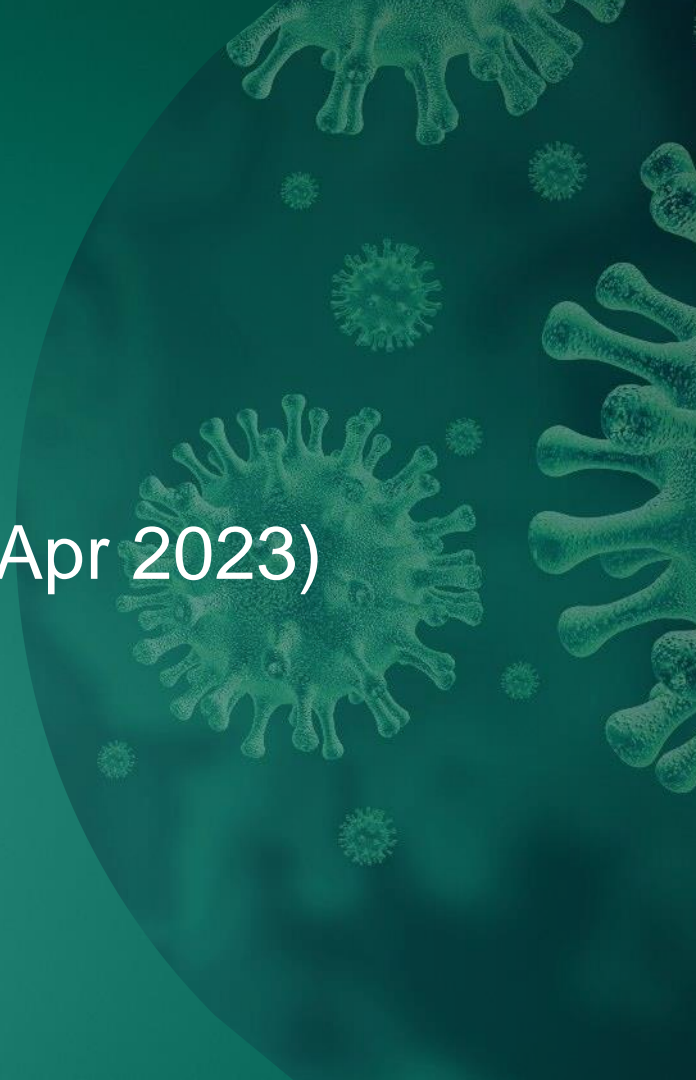
Influenza cases and hospitalisation trends





RSV Epidemiology

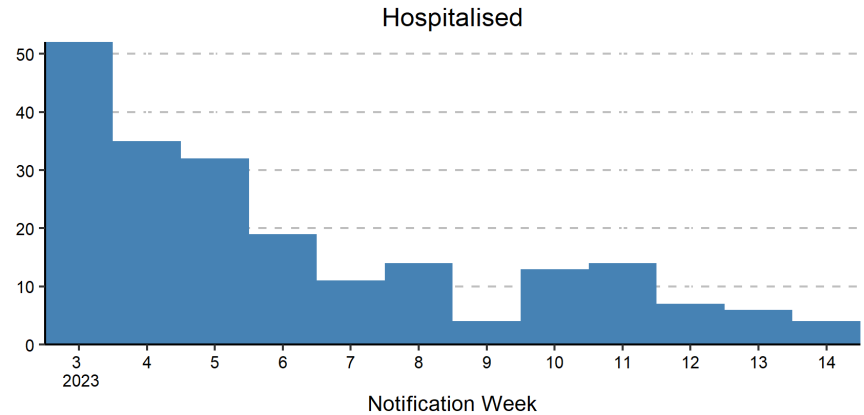
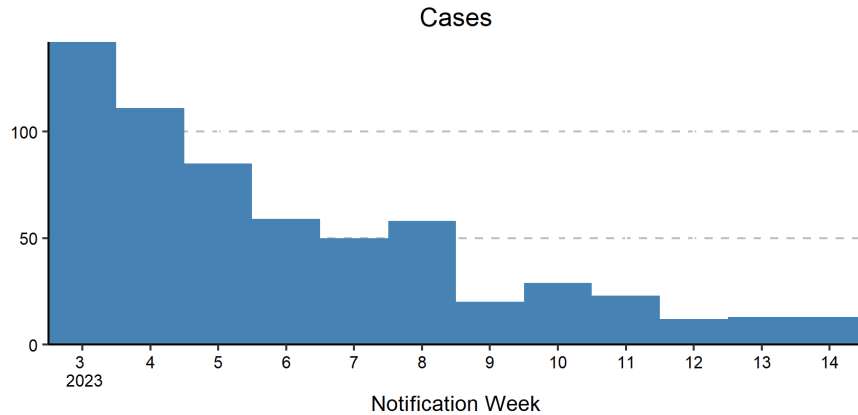
Week 14 2023 (02 Apr 2023 – 08 Apr 2023)





Number of RSV cases and hospitalisations

	W12	W13	W14		Since Wk40
Cases	12	13	13	0%	7,343
Hospitalised	7	6	4		2,918





RSV cases and hospitalisation trends

