

Influenza Surveillance in Ireland – Summary Report

Influenza Weeks 21 - 28 2014 (19th May – 13th July 2014)



During the summer period, short summary reports of influenza activity will be published. www.hpsc.ie

Summary

- All indicators of influenza activity in Ireland remained at low levels between weeks 21 to 28 2014.
- **Influenza-like illness (ILI):** The sentinel GP influenza-like illness (ILI) consultation rate was 0.4 per 100,000 population in week 28 2014, remaining low and stable. ILI rates have remained low this summer, ranging from 0.4 – 2.6 per 100,000 population.
 - ILI rates remained below the Irish baseline threshold (21.0 per 100,000 population).
 - Age specific ILI rates were low in all age groups.
- **GP Out of Hours Service:** The proportion of influenza-related calls to GP Out-of-Hours services remained at low levels.
- **National Virus Reference Laboratory (NVRL):** Influenza positivity reported from the NVRL remained low for the summer period to date. No influenza positive sentinel GP specimens have been reported since week 20 2014. Sporadic positive detections of influenza were reported from non-sentinel sources between weeks 21 - 25 2014: 3 influenza A(H3) and 5 influenza B. No influenza positive non-sentinel specimens were reported during weeks 26 - 28 2014. Sporadic detections of adenovirus, respiratory syncytial virus (RSV), parainfluenza virus type 3 and human metapneumovirus (hMPV) have been detected between weeks 21- 28 2014.
- **Hospitalisation:** Two confirmed influenza cases were reported as hospitalised during the summer period to date, one due to influenza A(H3) during week 21 2014 and one due to influenza B during week 25 2014.
- **ICU admissions:** No confirmed influenza cases were admitted to ICU and reported to HPSC to date this summer.
- **Mortality:** There have been no reports of any confirmed influenza-associated deaths occurring during the summer period to date (between weeks 21 and 28 2014).
- **Outbreaks:** To date this summer, one acute respiratory outbreak (influenza negative) was reported to HPSC during week 27 2014, in a community hospital in HSE-SE.
- **Europe:** Overall, influenza activity is at inter-seasonal levels in the northern hemisphere.

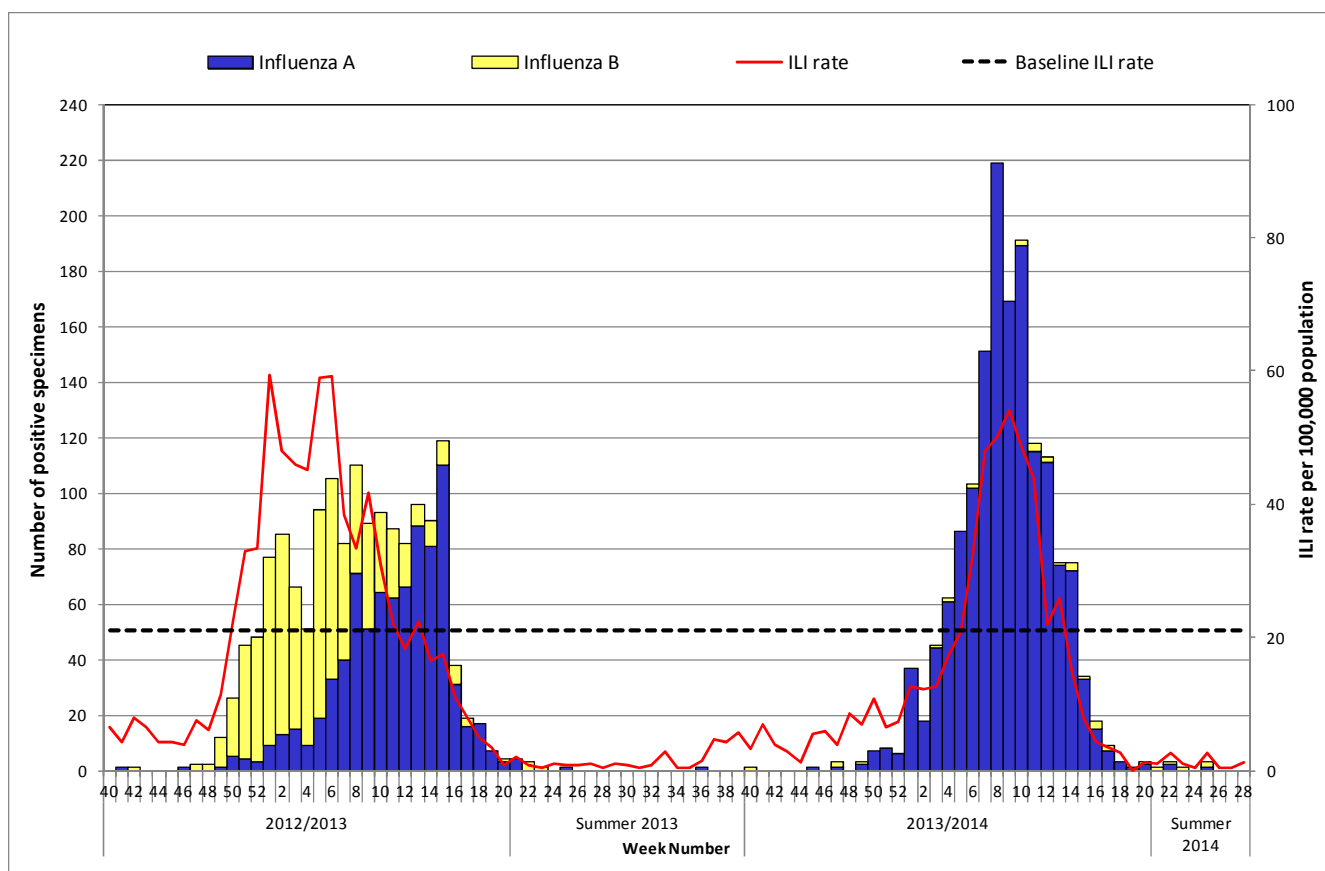


Figure 1. ILI sentinel GP consultation rates per 100,000 population, baseline ILI threshold rate, and number of positive influenza A and B specimens tested by the NVRL, by influenza week and season.

Source: Clinical ILI data from ICGP and virological data from the NVRL*

Novel viruses

- For up to date information on human infection with avian influenza A(H7N9) virus in China including the current case numbers and WHO risk assessment of the situation please see [here](#).
- Information on Middle Eastern Respiratory Syndrome Coronavirus (MERS-CoV), including the latest ECDC rapid risk assessment is available on the [ECDC website](#). Further information and guidance documents are also available on the [HPSC](#) and [WHO](#) websites.
- For information on other avian influenza viruses, please see [here](#).

Further information on influenza in Ireland and internationally

Ireland	www.hpsc.ie
Northern Ireland	http://www.fluawareni.info/
Europe – ECDC	http://ecdc.europa.eu/
Public Health England	http://www.hpa.org.uk/Topics/InfectiousDiseases/InfectionsAZ/SeasonalInfluenza/
United States CDC	http://www.cdc.gov/flu/weekly/fluactivitysurv.htm
Public Health Agency of Canada	http://www.phac-aspc.gc.ca/fluwatch/12-13/index-eng.php

Acknowledgements

This report was prepared by Lisa Domegan and Joan O'Donnell, HPSC. HPSC wishes to thank the sentinel GPs, the ICGP, NVRL, Departments of Public Health, ICSI and HSE-NE for providing data for this report.

* Sentinel GP consultations and virological data are updated on an ongoing basis, ILI rates and virological data are adjusted accordingly.