

Influenza Surveillance in Ireland – Summary Report

Influenza Weeks 23 & 24 2013 (3rd – 16th June 2013)



During the summer period, short summary reports of influenza activity will be published. www.hpsc.ie

Summary

- **Overall, influenza activity in Ireland remained at low levels during weeks 23 and 24 2013.**
- The sentinel GP influenza-like illness (ILI) consultation rate was 0.6 per 100,000 population in week 24 2013 and 0.4 per 100,000 in week 23 2013, remaining low and stable compared to the updated rate of 0.8 per 100,000 during week 22 2013.
 - ♦ ILI rates were below the Irish baseline threshold (21.0 per 100,000 population).
 - ♦ Age specific ILI rates remained low in all age groups.
- The proportion of influenza-related calls to GP Out-of-Hours services remained at low levels.
- No influenza positive specimens were reported from the NVRL for week 24 2013. Influenza positivity reported from the NVRL for week 23 2013 remained at low levels at 0.9%.
 - No influenza positive sentinel GP specimens have been detected since week 21 2013.
 - One influenza B positive non-sentinel specimen was detected during week 23 2013.
- Positivity levels were slightly elevated for parainfluenza virus type 3 (PIV-3) during week 23 2013 and for human metapneumovirus (hMPV) during week 24 2013.
- Sporadic cases of respiratory syncytial virus (RSV), parainfluenza viruses types 1 and 2 and adenoviruses have been detected since week 20 2013.
- No confirmed influenza hospitalised cases were notified during weeks 23 and 24 2013.
- There were no reports of any confirmed influenza-associated deaths occurring for the summer period to date (between weeks 21 and 24 2013).
- One new acute respiratory outbreak was reported to HPSC during week 23 2013, associated with parainfluenza virus type 3 (PIV-3) in HSE-NW. All four acute respiratory outbreaks (two associated with PIV-3, one associated with influenza B and one with hMPV) reported to date this summer were in residential institutions/long stay units.
- The latest [WHO](#) and [ECDC](#) influenza surveillance reports are showing low levels of influenza transmission in the northern hemisphere temperate zones.
- For up to date information on human infection with avian influenza A(H7N9) virus in China including the current case numbers and the WHO assessment of the situation please see [here](#). The European Centre for Disease Prevention and Control has published additional information including an updated rapid risk assessment of the situation, see [here](#).
- Information on Middle Eastern Respiratory Syndrome Coronavirus (MERS-CoV), including the latest ECDC rapid risk assessment of June 18th is available on the [ECDC website](#). Further information and guidance documents are also available on the [HPSC website](#).

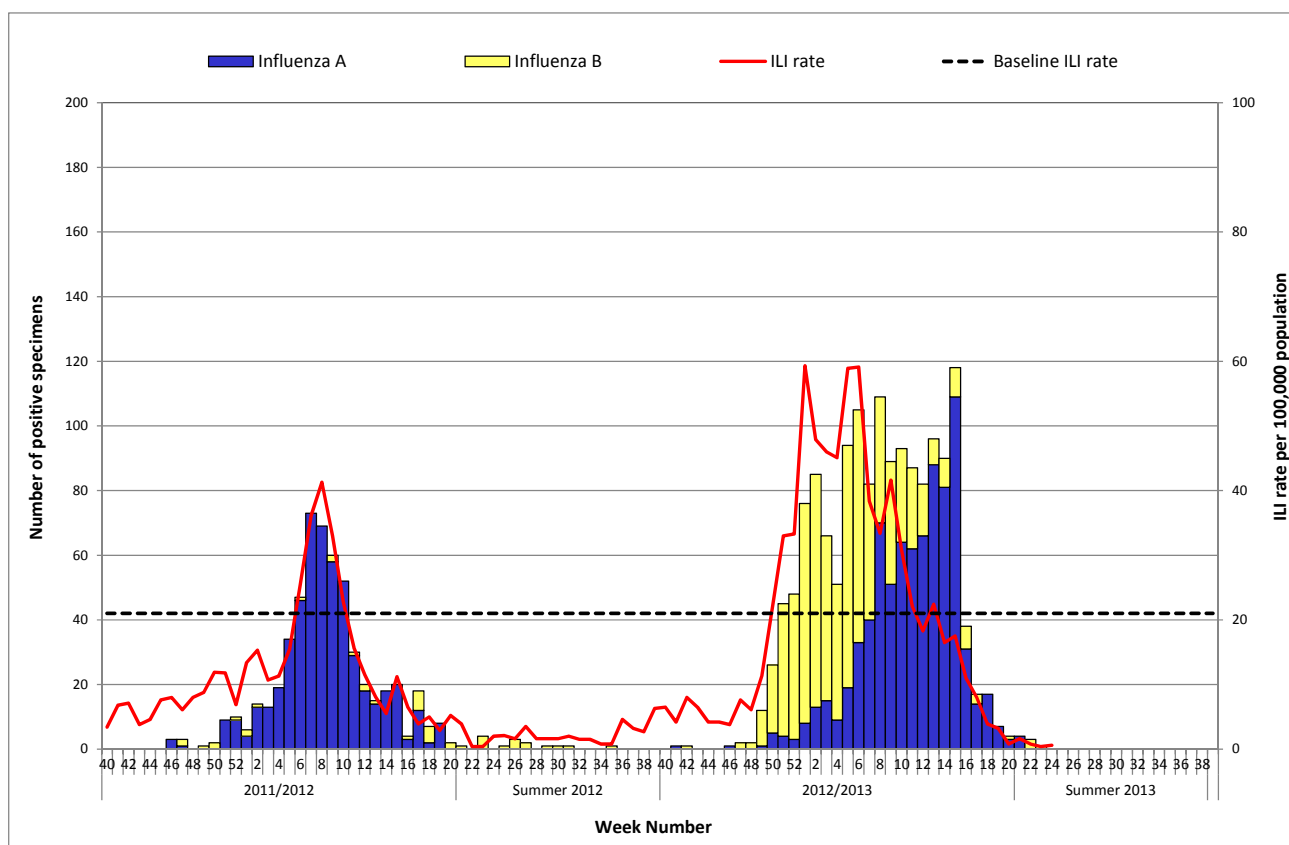


Figure 1. ILI sentinel GP consultation rates per 100,000 population, baseline ILI threshold rate, and number of positive influenza A and B specimens tested by the NVRL, by influenza week and season.

Source: Clinical ILI data from ICGP and virological data from the NVRL*

Further information on influenza in Ireland and internationally

Ireland	www.hpsc.ie
Northern Ireland	http://www.fluawareni.info/
Europe – ECDC	http://ecdc.europa.eu/
Public Health England	http://www.hpa.org.uk/Topics/InfectiousDiseases/InfectionsAZ/SeasonalInfluenza/
United States CDC	http://www.cdc.gov/flu/weekly/fluactivitysurv.htm
Public Health Agency of Canada	http://www.phac-aspc.gc.ca/fluwatch/12-13/index-eng.php

Acknowledgements

This report was prepared by Lisa Domegan and Joan O'Donnell, HPSC. HPSC wishes to thank the sentinel GPs, the ICGP, NVRL, Departments of Public Health, ICSI and HSE-NE for providing data for this report.

*Sentinel GP consultations and virological data are updated on an ongoing basis, ILI rates and virological data are adjusted accordingly.