

Influenza Surveillance in Ireland – Weekly Report

Influenza Week 4 2021 (25th – 31th January 2021)



 Intensive Care Society of Ireland

Summary

There was no evidence of influenza viruses circulating in the community in Ireland during week 4 2021 (week ending 31/01/2021) or during week 40 2020 to week 3 2021. Rhinovirus and enterovirus positive detections continue to be reported throughout the 2020/21 season. COVID-19 epidemiology reports are published on www.hpsc.ie.

- Influenza-like illness (ILI): The sentinel GP influenza-like illness (ILI) consultation rate decreased further to 28.4/100,000 population in week 4 2021, compared to an updated rate 45.0/100,000 population in week 3 2021.
- The sentinel GP ILI consultation rate has now been above the Irish baseline threshold (18.1/100,000 population) for eleven consecutive weeks. The ILI consultation rate continued to decrease during week 4 2021 to 28.4/100,000 which is below the low intensity threshold (57.5/100,000)
- Sentinel GP ILI consultations for the 2020/2021 season to date are reflecting SARS-CoV-2 activity, rather than influenza activity.
- The sentinel GP ILI consultation rates, remained stable in the ≥65year age group and decreased in all other age groups most notably in the <15 year age group.
- GP Out of Hours: 1,049 (10.7% of total calls; N=9617) self-reported cough calls were reported by a network of GP Out-of-Hours (OOHs) services during week 4 2021, a decrease compared to 1,267 (13.1% of total calls; N=9692) self-reported cough calls reported in week 3 2021.
- National Virus Reference Laboratory (NVRL):
 - Of 1238 sentinel GP ILI specimens and 2067 non-sentinel respiratory specimen tested for influenza and RSV this season to date, no positive influenza or RSV detections were reported.
 - Rhinovirus/enterovirus positive detections continue to be detected in December 2020 and January 2021. Sporadic detections of adenovirus, human metapneumovirus and bocavirus were also reported this season.
- Influenza notifications: No confirmed influenza cases were notified during week 40 2020 to week 4 2021.
- RSV notifications: Two RSV cases were notified for the 2020/21 season to date, one during week 42 2020 and the second during week 3 2021.
- Hospitalisations and Critical care admissions: No confirmed influenza hospitalised or critical care cases were notified to HPSC during week 40 2020 to week 4 2021.
- Mortality: There were no reports of deaths occurring in notified influenza cases during week 40 2020 to week 4 2021.
- Outbreaks: No influenza, RSV or acute respiratory infection (ARI - excluding COVID-19) outbreaks were reported to HPSC during week 40 2020 to week 4 2021.
- Influenza Vaccinations: From the 1st September 2020 to the 31/01/2021 1,225,516 influenza vaccinations were provided by GPs and Pharmacists.
- International: In the European Region (latest available data up to 17/01/2020), influenza activity continued at low inter-seasonal levels with only sporadic detections of influenza A and B reported.

1. GP sentinel surveillance system - Clinical Data

- During week 4 2021, 84 influenza-like illness (ILI) cases were reported from the Irish sentinel GP network, corresponding to an ILI consultation rate of 28.4/100,000 population compared to the updated rate of 45.0/100,000 reported during week 3 2021. (Figure 1). On the 09/03/2020, GP ILI consultations changed from face-to-face consultations to phone consultations.
- The sentinel GP ILI consultation rate has been above the Irish baseline threshold (18.1/100,000 population) for eleven consecutive weeks. In week 4 2021 the ILI consultation rate continued to decrease to 28.4/100,000 from an updated rate of 45.0/100,000 in week 3 2021. This value is below the low intensity threshold (57.5/100,000) reflecting circulation of SARS-CoV-2 in the community, rather than influenza viruses.
- GP ILI consultation rates remained stable in the ≥65 year age group and decreased in all other age groups in week 4 2021 most notably in the <15 year age group. (Figure 2 & Table 1)
- HPSC in consultation with the European Centre for Disease Prevention and Control (ECDC) has reviewed the Irish sentinel GP baseline ILI threshold for the 2020/2021 influenza season, which will remain at 18.1 per 100,000 population. ILI rates above this baseline threshold combined with sentinel GP influenza positivity >10% indicates the likelihood that influenza is circulating in the community. The Moving Epidemic Method (MEM) is used to calculate thresholds for GP ILI consultations using a standardised approach across Europe. The baseline ILI threshold (18.1/100,000 population), low (57.5/100,000 population) medium (86.5/100,000 population) and high (103.6/100,000 population) intensity ILI thresholds are shown in figure 1. Age specific MEM threshold levels are shown in Table 1.

Figure 1: Sentinel GP Influenza-like illness (ILI) consultation rates per 100,000 population, baseline ILI threshold, medium and high intensity ILI thresholds and number of positive influenza A and B specimens tested by the NVRL, by influenza week and season. *Source: ICGP and NVRL*

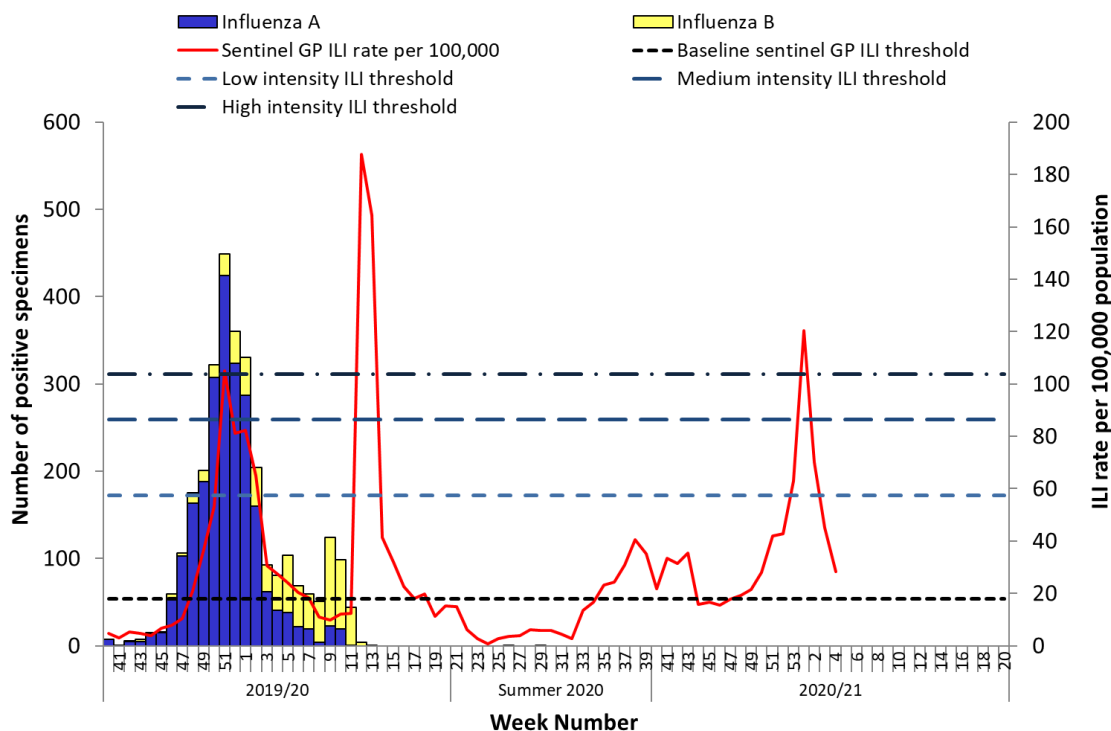
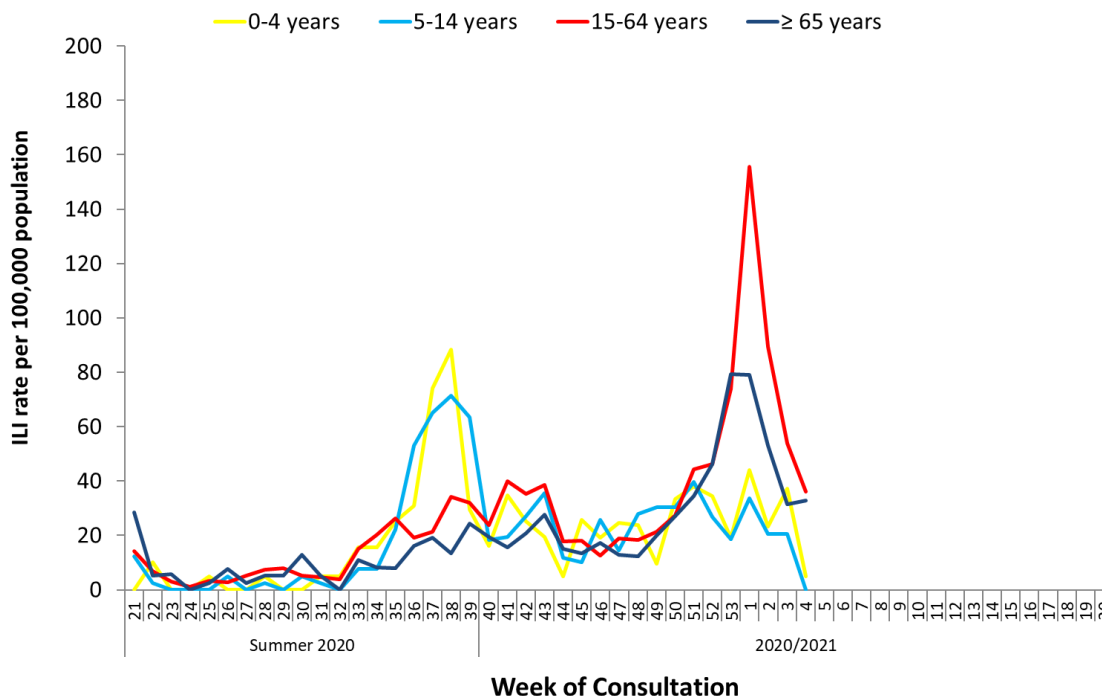


Figure 2: Age specific sentinel GP ILI consultation rate per 100,000 population by week of phone consultation during the summer of 2020 and the 2020/2021 influenza season to date. *Source: ICGP.*



Sentinel GP ILI Threshold Levels	Below Baseline	Low	Moderate	High	Extraordinary
----------------------------------	----------------	-----	----------	------	---------------

Sentinel GP ILI consultation/100,000 pop.	Week of Consultation																	
	40	41	42	43	44	45	46	47	48	49	50	51	52	53	1	2	3	4
All Ages	21.9	33.5	31.4	35.3	15.7	16.8	15.6	17.7	19.2	21.6	28.1	41.9	42.7	63.0	120.4	70.2	45.0	28.4
<15 yrs	17.6	24.5	26.4	30.2	9.5	15.2	23.5	17.7	26.6	23.6	31.3	39.0	29.3	18.8	37.1	21.4	26.0	1.6
15-64 yrs	23.8	40.1	35.2	38.6	17.9	18.0	12.7	18.8	18.2	21.3	27.3	44.3	46.2	73.9	155.7	89.4	53.9	36.1
≥65 yrs	19.4	15.5	20.9	27.6	15.0	13.4	17.3	12.7	12.4	19.9	27.2	34.5	46.2	79.2	78.9	53.1	31.4	32.8
Number of reporting practices (N=60)	51	55	55	56	57	54	58	57	58	58	58	58	58	58	56	58	58	53

Table 1: Age specific sentinel GP ILI consultation rate per 100,000 population by week (weeks 40 2020 – week 4 2021), colour coded by sentinel GP ILI age specific Moving Epidemic Method (MEM) threshold levels. *Source: ICGP.*

2. Influenza and Other Respiratory Virus Detections - NVRL

The data reported in this section for the 2020/2021 influenza season refer to sentinel GP and non-sentinel respiratory specimens routinely tested for influenza, respiratory syncytial virus (RSV), adenovirus, parainfluenza virus types 1-4 (PIV-1-4), human metapneumovirus (hMPV) and rhino/enteroviruses by the National Virus Reference Laboratory (NVRL) (tables 2 & 3 and figure 3). The COVID-19 pandemic caused disruption to sentinel

GP influenza networks across the globe. In Ireland, virological surveillance and testing for influenza and RSV within the Irish sentinel GP network recommenced on swabs taken from the 18th November 2020.

- Of 1238 sentinel GP ILI specimens and 2067 non-sentinel respiratory specimens tested for influenza and RSV this season to date, no positive influenza or RSV detections were reported (Table 2).
- The number of sentinel and non-sentinel specimens tested for influenza and RSV each week are continuously updated as specimens may be tested retrospectively.
- Rhinovirus/enterovirus positive detections increased in September and have continued to be detected throughout the 2020/21 season. During week 4 2021, Rhino/enteroviruses detections were at 12.0% (9/75) compared to week 3 at 24.0% (18/75). Sporadic detections of adenovirus, hMPV, and bocavirus were reported during week 40 2020 to week 4 2021.

Table 2: Number of sentinel GP ILI referrals and non-sentinel* respiratory specimens tested by the NVRL for influenza and RSV and positive results, for week 4 2021 and the 2020/2021 season to date. *Source: NVRL*

Week	Specimen type	Total tested	Influenza		RSV	
			Number positive	% positive	Number positive	% positive
4 2021	Sentinel GP ILI referral	82	0	0.0	0	0.0
	Non-sentinel	75	0	0.0	0	0.0
	Total	157	0	0.0	0	0.0
2020/2021	Sentinel GP ILI referral	1238	0	0.0	0	0.0
	Non-sentinel	2067	0	0.0	0	0.0
	Total	3305	0	0.0	0	0.0

Table 3: Number of non-sentinel respiratory specimens tested by the NVRL for other respiratory viruses (excluding SARS-CoV-2) and positive results, for week 4 2021 and the 2020/2021 season to date. *Source: NVRL*

Week	Total tested	Adenovirus	% Adenovirus	Rhino/enterovirus	% Rhino/enterovirus	Bocavirus	% Bocavirus	hMPV	% hMPV
4 2021	75	1	1.3	9	12.0	0	0.0	0	0.0
2020/2021	2067	91	4.4	370	17.9	3	0.1	11	0.5

* Please note that non-sentinel specimens relate to specimens referred to the NVRL (other than sentinel specimens) and may include more than one specimen from each case.

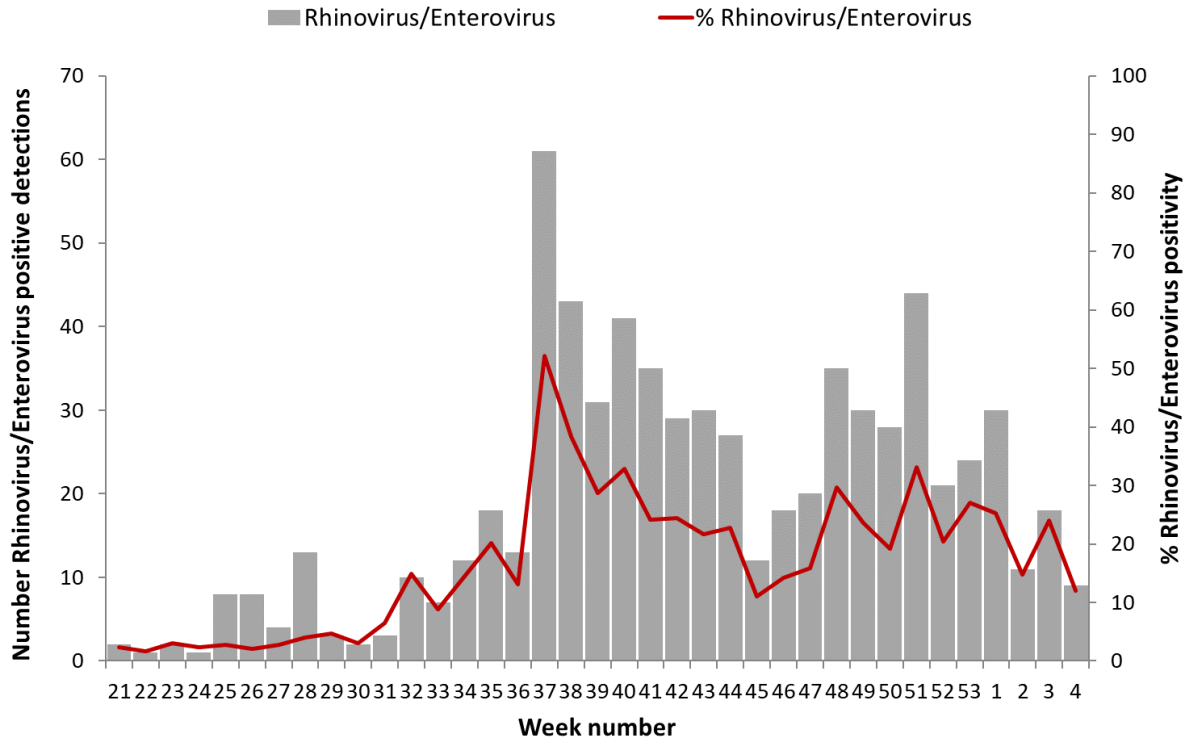


Figure 3: Number and percentage of non-sentinel Rhinovirus/Enterovirus positive specimens detected by the NVRL during the 2020/2021 season. *Source: NVRL.*

3. Regional Influenza Activity by HSE-Area

Regional influenza activity levels will be based on laboratory confirmed influenza cases and/or outbreaks.

No confirmed influenza cases or outbreaks were notified in Ireland during week 40 2020 to week 4 2021. Geographic spread of influenza viruses are based on laboratory confirmed influenza case/outbreak data. **No confirmed influenza activity was reported for any HSE-Area during this period.**

4. GP Out-Of-Hours services surveillance

The Department of Public Health in the HSE-NE collates national data on calls to nine of thirteen GP Out-of-Hours services in Ireland. Records with clinical symptoms of self-reported flu/influenza or cough are validated to specifically extract influenza related calls and cough calls from free text patients reported symptoms for analysis. This information may act as an early indicator of circulation of influenza, SARS-CoV-2 or other respiratory viruses. Data are self-reported by callers and are not based on coded diagnoses.

- The proportion of self-reported 'flu' calls to GP OOHs services remained below baseline for week 4 2021 at 0.7% (65/8910), a decrease compared to a rate of 1.3% (128/9692) during week 3 2021 (Figure 4).
- 1,049 (10.9% of total calls; N= 9617) self-reported cough calls were reported by a network of GP Out-of-Hours (OOHs) services during week 4 2021 (figures 5 & 6), this compares to 1,267 (13.1 % of total calls; N=9692) self-reported cough calls reported in week 3 2021
- Baseline threshold levels for self-reported cough and 'flu' calls are 10.75% and 2.34%, respectively.
- GP OOHs data are continuously updated as more retrospective data are reported.
- Five GP OOHs services reported data during week 4 2021.

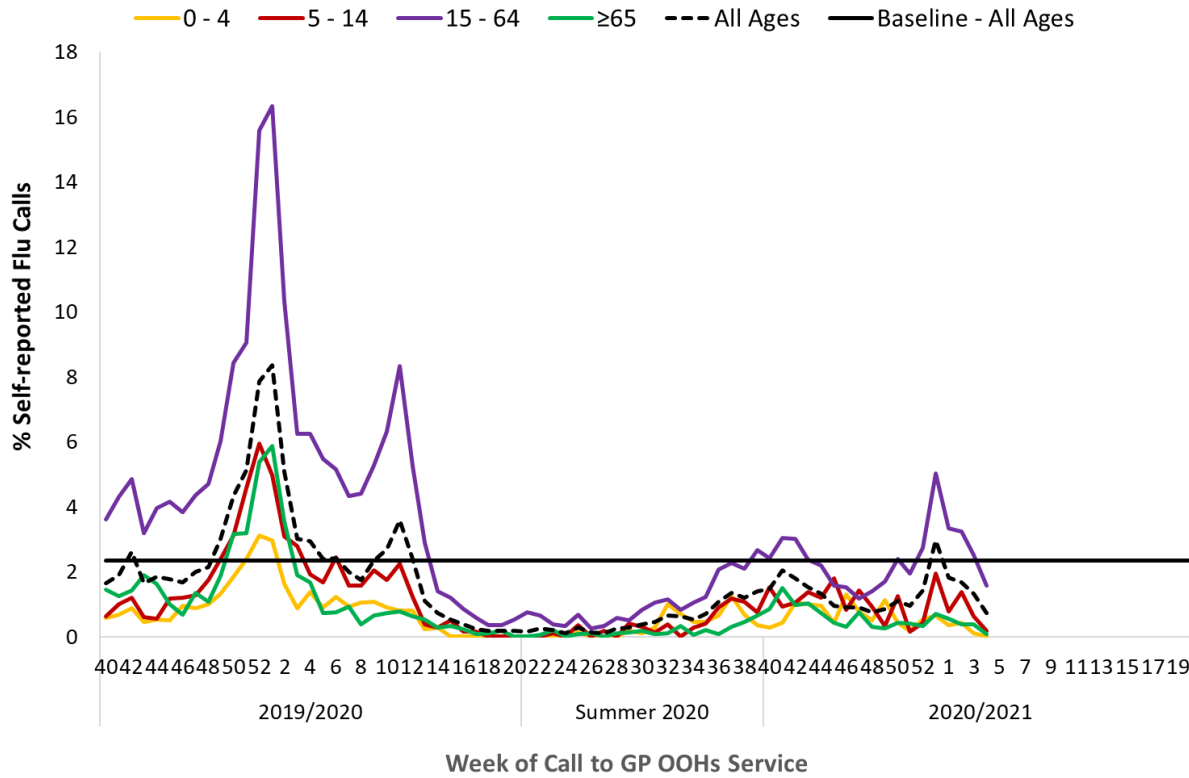


Figure 4: Percentage of self-reported Influenza/ILI calls for all ages and by age group as a proportion of total calls to Out-of-Hours GP Co-ops by week and season. The % Influenza/ILI calls baseline for all ages calculated using the MEM method on historic data is shown. *Source: GP Out-Of-Hours services in Ireland (collated by HSE-NE) & ICGP.*

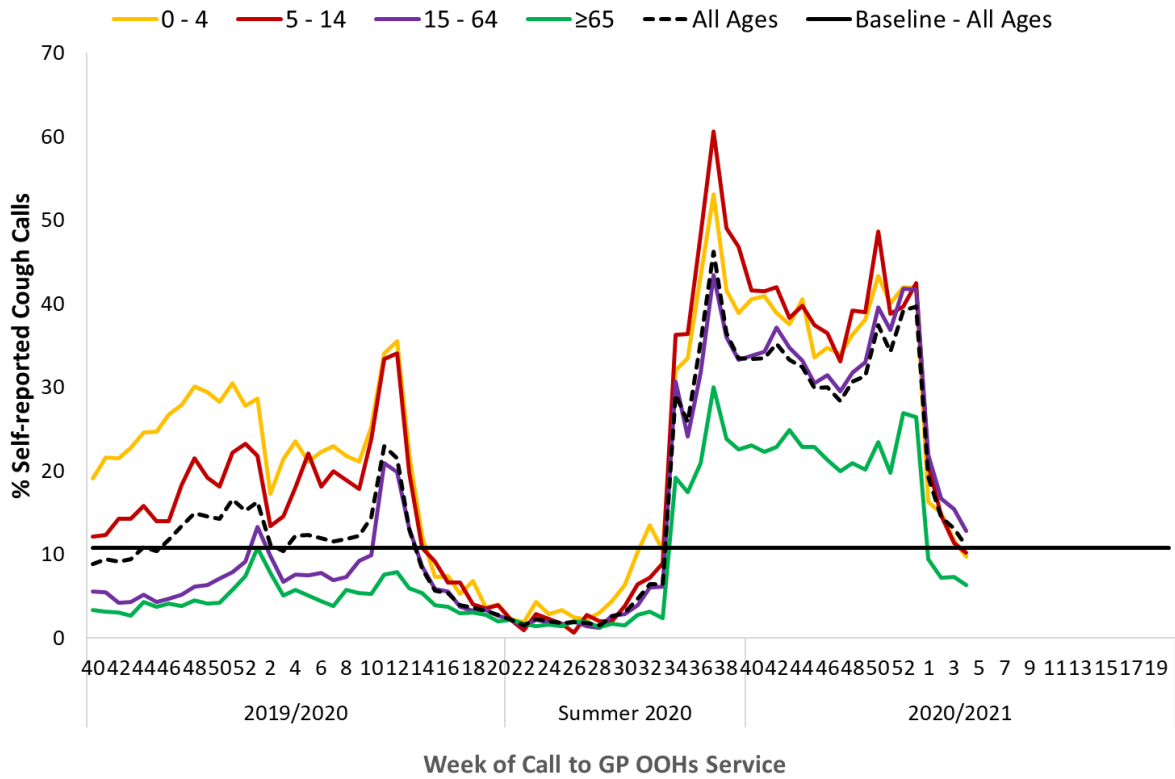


Figure 5: Percentage of self-reported COUGH calls for all ages and by age group as a proportion of total calls to Out-of-Hours GP Co-ops by week and season. The % cough calls baseline for all ages calculated using the MEM method on historic data is shown. *Source: GP Out-Of-Hours services in Ireland (collated by HSE-NE) & ICGP.*

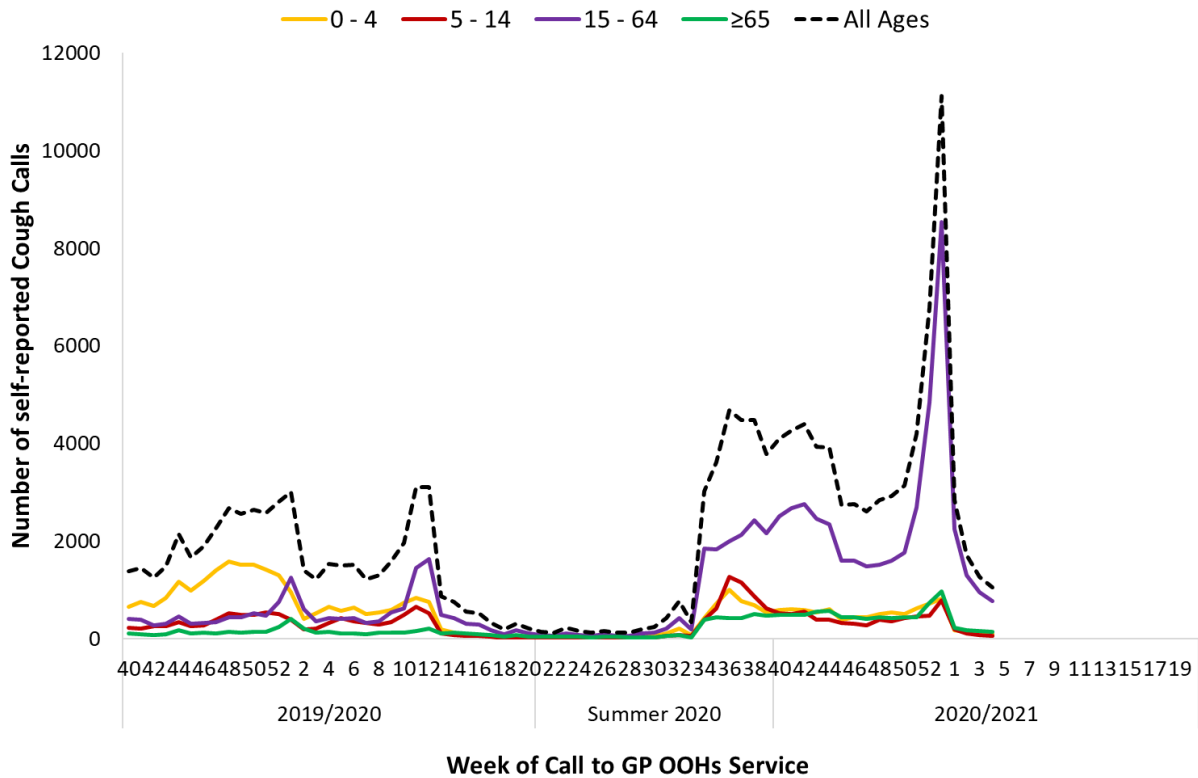


Figure 6: Number of self-reported COUGH calls for all ages and by age group to Out-of-Hours GP Co-ops by week and season. *Source: GP Out-Of-Hours services in Ireland (collated by HSE-NE) & ICGP.*

5. Influenza & RSV notifications

Influenza and RSV cases notifications are reported on Ireland's Computerised Infectious Disease Reporting System (CIDR), including all positive influenza /RSV specimens reported from all laboratories testing for influenza/RSV and reporting to CIDR.

- Influenza and RSV notifications are reported in the [Weekly Infectious Disease Report for Ireland](#). No confirmed influenza notifications were reported during week 40 2020 to week 4 2021. One RSV case was notified during week 3 2021. Two RSV cases were notified for the 2020/21 season to date, one during week 42 2020 and the second during week 3 2021.

6. Influenza Hospitalisations

No confirmed influenza hospitalised cases were notified to HPSC during week 40 2020 to week 4 2021.

7. Critical Care Surveillance

The Intensive Care Society of Ireland (ICSI) and the HSE Critical Care Programme are continuing with the enhanced surveillance system set up during the 2009 pandemic, on all critical care patients with confirmed influenza. HPSC processes and reports on this information on behalf of the regional Directors of Public Health/Medical Officers of Health.

No confirmed influenza cases were admitted to critical care units and reported to HPSC during week 40 2020 to week 4 2021.

8. Sentinel Hospital Network – Respiratory Admissions

The Departments of Public Health have established a network of eight sentinel hospitals located around the country, to report data on total, emergency and respiratory admissions on a weekly basis.

Respiratory admissions reported from the sentinel hospital network have remained relatively stable during week 40 2020 to week 3 2021, however in week 4 2021 only one hospital reported respiratory admissions. The COVID-19 pandemic has caused disruption to reporting from the sentinel hospital network. Due to the priority of COVID-19 work and current capacity issues, data are underreported in this section and should be interpreted with caution.

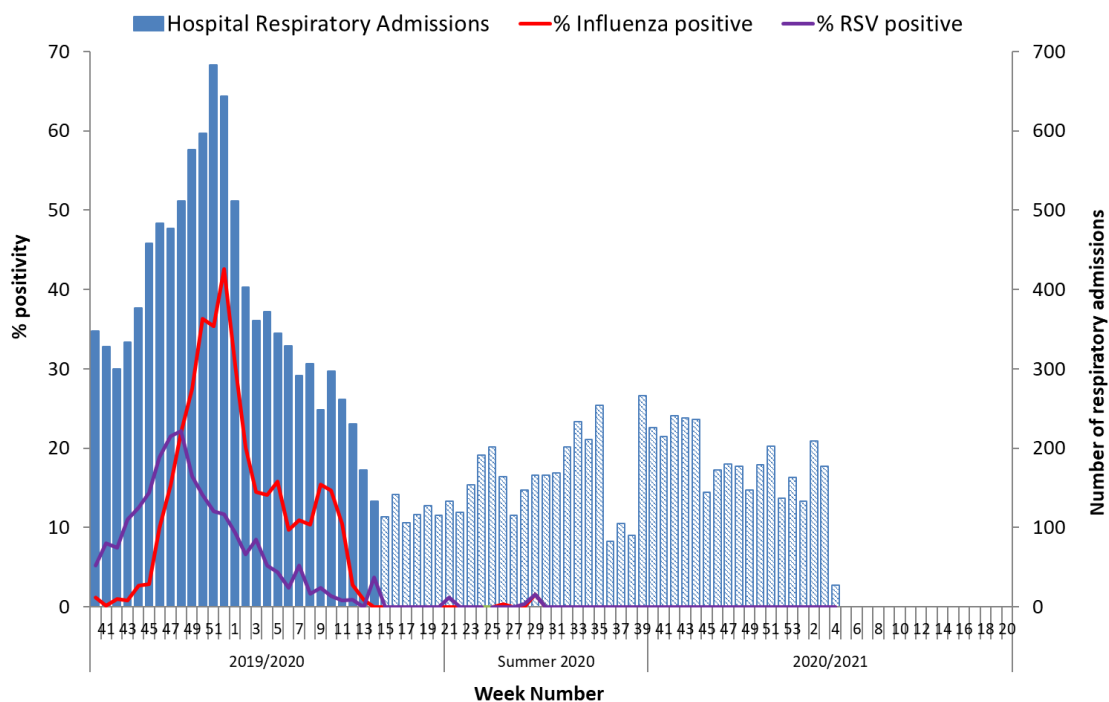


Figure 7: Number of respiratory admissions reported from the sentinel hospital network and % positivity for influenza and RSV (reported by the NVRL) by week and season. *Source: Departments of Public Health - Sentinel Hospital Network & NVRL. Weeks with missing sentinel hospital data are represented by the hatched bar.*

9. Mortality Surveillance

Influenza-associated deaths include all deaths where influenza is reported as the primary/main cause of death by the physician or if influenza is listed anywhere on the death certificate as the cause of death. HPSC receives daily mortality data from the General Register Office (GRO) on all deaths from all causes registered in Ireland. These data have been used to monitor excess all-cause and influenza and pneumonia deaths as part of the influenza surveillance system and the European Mortality Monitoring Project. These data are provisional due to the time delay in deaths' registration in Ireland. <http://www.euromomo.eu/>

- There were no reports of any influenza-related deaths during week 40 2020 to week 4 2021.
- Between week 40 2020 to week 4 2021, no excess all-cause mortality in all ages was reported in Ireland after correcting GRO data for reporting delays with the standardised EuroMOMO algorithm. Due to delays in death registrations with the GRO, excess mortality data included in this report will be reported with one-week lag time.

10. Outbreak Surveillance

- No influenza, RSV or acute respiratory infection (ARI - excluding COVID-19) outbreaks were notified to HPSC during week 40 2020 to week 4 2021.
- COVID-19 outbreaks are not included in this report; surveillance data on COVID-19 outbreaks are detailed on the HPSC website. <https://www.hpsc.ie/a-z/respiratory/coronavirus/novelcoronavirus/casesinireland/>

11. Influenza Vaccinations

From the 1st September 2020 up to the week ending 31/01/2021, the total number of influenza vaccinations provided by GPs and Pharmacists was 1,225,516.

12. International Summary

Since the start of the COVID-19 pandemic, influenza activity globally has remained at low levels. The World Health Organization (WHO) has advised that current influenza surveillance data should be interpreted with caution as the ongoing COVID-19 pandemic has influenced health seeking behaviours, surveillance and reporting in sentinel sites, as well as testing priorities and capacities in Member States. The various hygiene and physical distancing measures implemented by Member States to reduce SARS-CoV-2 virus transmission have likely played a role in reducing influenza virus transmission.

As of 1st February 2021, based on data up to January 17th, WHO reported that globally despite continued or even increased testing for influenza in some countries, influenza activity remained at lower levels than expected for this time of the year. In the temperate zones of the northern hemisphere, influenza activity remained below inter-seasonal levels, though sporadic detections of influenza A and B viruses were reported in some countries. In the temperate zone of the southern hemisphere, influenza activity was reported at inter-seasonal levels. In the Caribbean and Central American countries, increased influenza detections were reported in Haiti in recent weeks. In tropical South America, there were no influenza detections in this reporting period. In tropical Africa, influenza activity continued to be reported in Western Africa. In Southern Asia, sporadic influenza detections were reported across reporting countries. In South East Asia, there were no influenza reported in this reporting period. Worldwide, influenza B detections accounted for the majority of the very low numbers of detections reported.

In the European region, influenza activity remained at inter-seasonal levels during week 3 2021 (week ending 24th January 2021), 1,246 sentinel source specimens were tested for influenza viruses and one was positive for influenza virus. Since the start of the season, of 18,095 sentinel specimens that have been tested for influenza viruses, ten were positive: 3 A(H1)pdm09 and 7 B viruses. During week 3 2021, 19 specimens from non-sentinel sources (such as hospitals, schools, primary care facilities not involved in sentinel surveillance, or nursing homes and other institutions) tested positive for an influenza virus: 11 A and 8 B. Since the beginning of the season, 547 of 258 974 non-sentinel specimens tested positive for influenza viruses; 266 (48.6%) were type A and 281 (51.4%) type B. Of 43 subtyped A viruses, 11 (25.6%) were A(H1)pdm09 and 32 (74.4%) were A(H3). Of 281 type B viruses, only 5 were ascribed to a lineage: 4 B/Victoria and 1 B/Yamagata.

See [ECDC](#) and [WHO](#) influenza surveillance reports for further information.

- Further information on influenza is available on the following websites:
 - Northern Ireland <https://www.publichealth.hscni.net/publications/influenza-weekly-surveillance-bulletin-northern-ireland-202021>
 - Public Health England <https://www.gov.uk/government/collections/weekly-national-flu-reports>
 - Europe – ECDC <http://ecdc.europa.eu/>
 - United States CDC <http://www.cdc.gov/flu/weekly/fluactivitysurv.htm>
 - Public Health Agency of Canada <http://www.phac-aspc.gc.ca/fluwatch/index-eng.php>
- Influenza case definition in Ireland <https://www.hpsc.ie/a-z/respiratory/influenza/casedefinitions/>
- COVID-19 case definition in Ireland <https://www.hpsc.ie/a-z/respiratory/coronavirus/novelcoronavirus/casedefinitions/>
- Avian influenza overview May – August 2020 <https://www.ecdc.europa.eu/en/publications-data/avian-influenza-overview-may-august-2020>

- Avian influenza: EU on alert for new outbreaks <https://www.ecdc.europa.eu/en/news-events/avian-influenza-eu-alert-new-outbreaks>
- Information on COVID-19 in Ireland is available on the HPSC website <https://www.hpsc.ie/a-z/respiratory/coronavirus/novelcoronavirus/>
- The WHO categorised COVID-19 as a pandemic on 11 March 2020. For more information about the situation in the WHO European Region visit:
 - WHO website: <https://www.who.int/emergencies/diseases/novel-coronavirus-2019>
 - ECDC website: <https://www.ecdc.europa.eu/en/novel-coronavirus-china>

13. WHO recommendations on the composition of influenza virus vaccines

The WHO vaccine strain selection committee recommend that quadrivalent egg-based vaccines for use in the 2020/2021 northern hemisphere influenza season contain the following:

- an A/Guangdong-Maonan/SWL1536/2019 (H1N1)pdm09-like virus;
- an A/Hong Kong/2671/2019 (H3N2)-like virus;
- a B/Washington/02/2019 (B/Victoria lineage)-like virus; and
- a B/Phuket/3073/2013 (B/Yamagata lineage)-like virus.

https://www.who.int/influenza/vaccines/virus/recommendations/2020-21_north/en/

Further information on influenza in Ireland is available at www.hpsc.ie

Acknowledgements

This report was prepared by Maeve McEnergy, Martha Neary, Lisa Domegan, Eva Kelly, Adele McKenna, and Joan O'Donnell, HPSC. HPSC wishes to thank the sentinel GPs, the ICGP, NVRL, Departments of Public Health, ICSI and HSE-NE for providing data for this report.