

Influenza Surveillance in Ireland – Weekly Report

Influenza Week 11 2014 (10th – 16th March 2014)



 **Intensive Care Society of Ireland**



Summary

- Influenza activity decreased in Ireland during week 11 2014, however remained at elevated levels, with continuing reports of confirmed influenza hospital and ICU admissions and outbreaks. Influenza A(H3) is the predominant virus circulating.
- **Influenza-like illness (ILI):** The sentinel GP ILI consultation rate was 38.2 per 100,000 population during week 11 2014, a slight decrease compared to the updated rate of 49 per 100,000 during week 10 2014.
 - ILI rates remain above the Irish baseline threshold (21.0 per 100,000 population), for the seventh consecutive week.
 - The highest age specific ILI rates during week 11 2014 were in those aged 65 years and older; age specific rates in all other age groups decreased.
- **National Virus Reference Laboratory (NVRL):** Influenza positivity decreased during week 11 2014, with 84 (22.6%) influenza positive specimens reported from the NVRL: 54 influenza A(H3), 29 influenza A(H1)pdm09 and one influenza A (not subtyped).
- **Hospitalisation:** 69 confirmed influenza hospitalised cases were reported to HPSC during week 11 2014, bringing the total number of hospitalised cases reported this season to 473.
 - The highest age specific rates for confirmed influenza cases admitted to hospital were in those aged less than 1 year and those aged 65 years and older.
- **ICU admissions:** 69 confirmed influenza cases were admitted to ICU and reported to HPSC to date this season, 33 associated with influenza A(H1)pdm09, 26 with A(H3) and 10 A (not subtyped).
- **Mortality:** 20 influenza-associated deaths were reported to HPSC to date this season.
- **Outbreaks:** 10 acute respiratory outbreaks were reported to HPSC during week 11 2014, the majority in residential care facilities/long stay units/community hospitals.
- **Europe:** Based on various influenza indicators, the status of the 2013/2014 influenza season has varied considerably across EU/EEA Member States in terms of the phase of the epidemic, its intensity and the dominant virus subtype.

Surveillance Systems

In order to monitor influenza activity in Ireland a number of surveillance systems are currently in place:

1. Irish College of General Practitioners (ICGP) GP sentinel surveillance system
2. Virological data from the National Virus Reference Laboratory (NVRL)
3. GP Out-of-Hours surveillance system
4. Influenza notifications reported on the Computerised Infectious Disease Reporting system (CIDR)
5. Enhanced surveillance of all hospitalised confirmed influenza cases aged 0-14 years
6. Intensive Care Society of Ireland (ICSI) enhanced surveillance of all ICU patients with confirmed influenza and enhanced surveillance of all severe acute respiratory infections (SARI) in one adult and one paediatric ICU site.
7. Outbreak reporting on CIDR
8. Network of sentinel hospitals reporting hospital admission data

1. GP sentinel surveillance system - Clinical Data

During week 11 2014, 78 influenza-like illness (ILI) cases were reported from sentinel GPs, corresponding to an ILI consultation rate of 38.2 per 100,000 population, a decrease compared to the updated rate for week 10 2014 which was 49.0 per 100,000 population. ILI rates remain above the Irish baseline threshold (21.0 per 100,000 population) for the seventh consecutive week. The highest age specific ILI rates during week 11 2014 were in those aged 65 years and older; age specific rates in all other age groups decreased (figures 1 & 2).

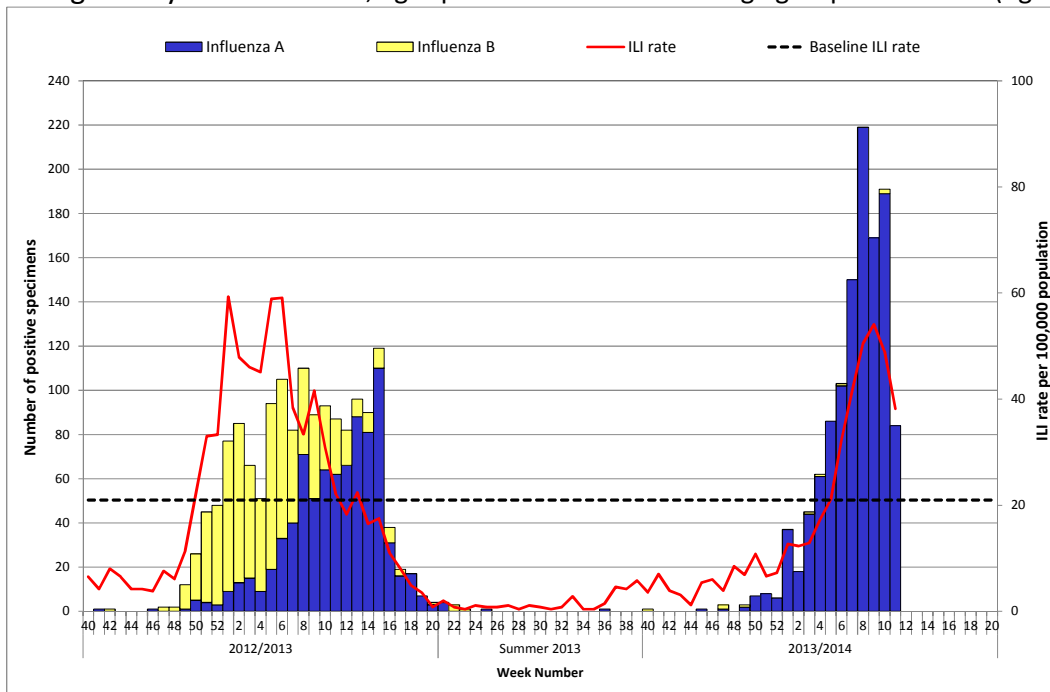


Figure 1. ILI sentinel GP consultation rates per 100,000 population, baseline ILI threshold rate, and number of positive influenza A and B specimens tested by the NVRL, by influenza week and season. *Source: ICGP and NVRL.*

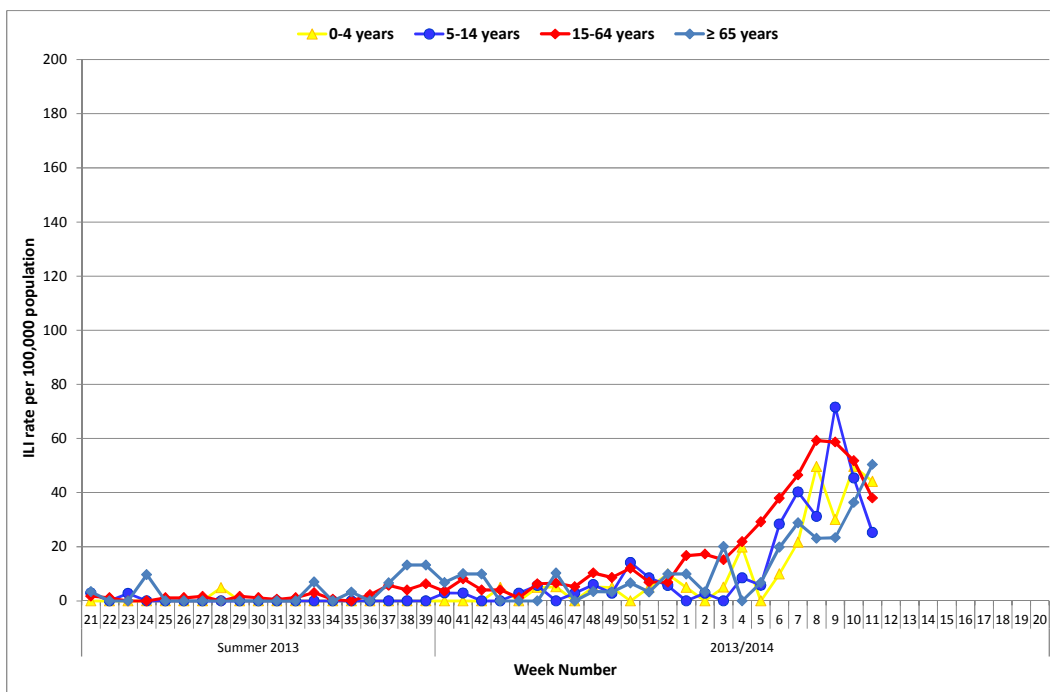


Figure 2: Age specific sentinel GP ILI consultation rate per 100,000 population by week during the summer of 2013 and the 2013/2014 influenza season to date. *Source: ICGP*

2. Influenza and Other Respiratory Viruses – National Virus Reference Laboratory

The data reported in this section refer to sentinel and non-sentinel specimens tested for influenza, respiratory syncytial virus (RSV), adenovirus, parainfluenza viruses types 1-4 (PIV-1-4) and human metapneumovirus (hMPV) by the National Virus Reference Laboratory (NVRL) (figures 3, 4 & 5, tables 1 & 2).

- Influenza positivity decreased during week 11 2014, with 84 (22.6%) influenza positive specimens reported from the National Virus Reference Laboratory (NVRL): 54 influenza A(H3), 29 influenza A(H1)pdm09 and 1 influenza A (not subtyped).
 - 13 of 24 (54.2%) sentinel specimens were influenza positive: 9 A(H3) and 4 A(H1)pdm09.
 - 71 of 347 (20.5%) non-sentinel specimens were influenza positive: 45 influenza A(H3), 25 A(H1)pdm09 and 1 influenza A (not subtyped).
 - Influenza A(H3) has been the predominant circulating influenza virus this season.
- RSV activity remained at low levels during week 11 2014.
- Sporadic detections of adenovirus, hMPV and parainfluenza viruses have been reported from the NVRL for the 2013/2014 season to date.

- The [European Centre for Disease Control \(ECDC\)](#) have reported that since week 40 2013, none of the 803 antigenically characterised viruses have differed substantially from the current influenza vaccine viruses recommended by WHO.
- Genetic characterisation of influenza viruses circulating in Ireland this season has been carried out by the NVRL on 12 positive samples to date. All Influenza A(H1)pdm09 viruses characterised (N=4) clustered as A/St. Petersburg/27/2011-like (Group 6). All known viruses in this genetic group remain antigenically similar to the clade representative vaccine strain A/California/7/2009. Influenza A(H3) sequences (n=4) clustered closely with the influenza A(H3) vaccine strain for this season and were A/Victoria/361/2011-like (Group 3C). All influenza B strains characterised (n=4) belong to the Yamagata lineage of viruses. Two influenza B strains characterised at the beginning of the season were B/Massachusetts/02/2012-like (Clade 2), which is the influenza B vaccine component for this season. The other two influenza B strains clustered in clade 3 and were B/Wisconsin/1/2010-like, which was the influenza B vaccine component for the 2012/2013 influenza season.

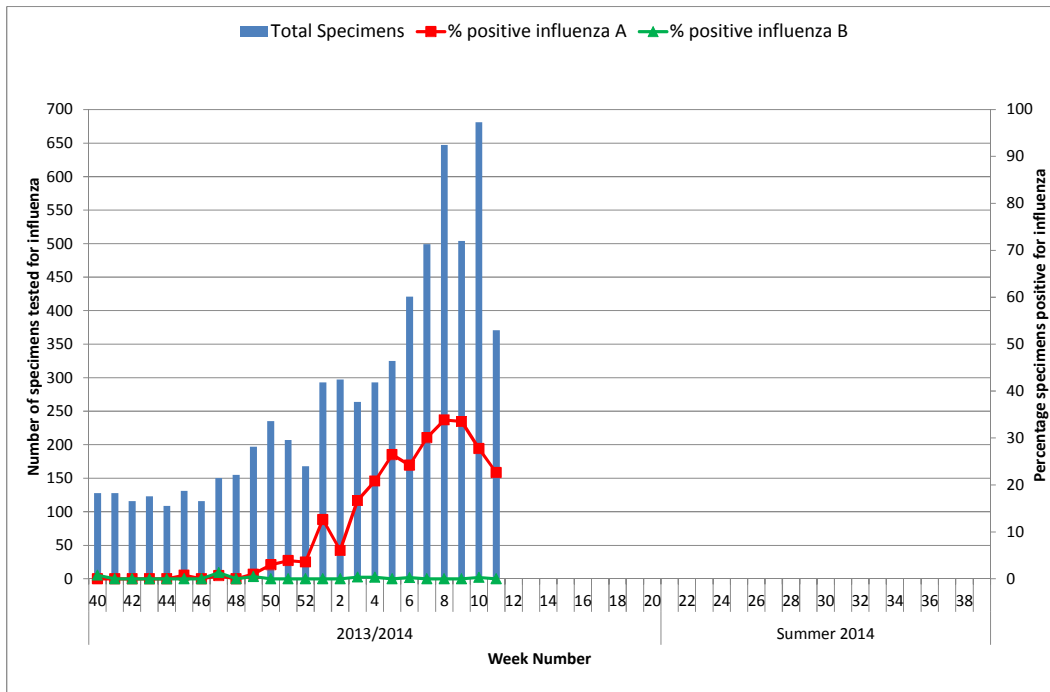


Figure 3: Number of sentinel and non-sentinel specimens tested for influenza and percentage influenza positive by week for the 2013/2014 influenza season. *Source: NVRL*

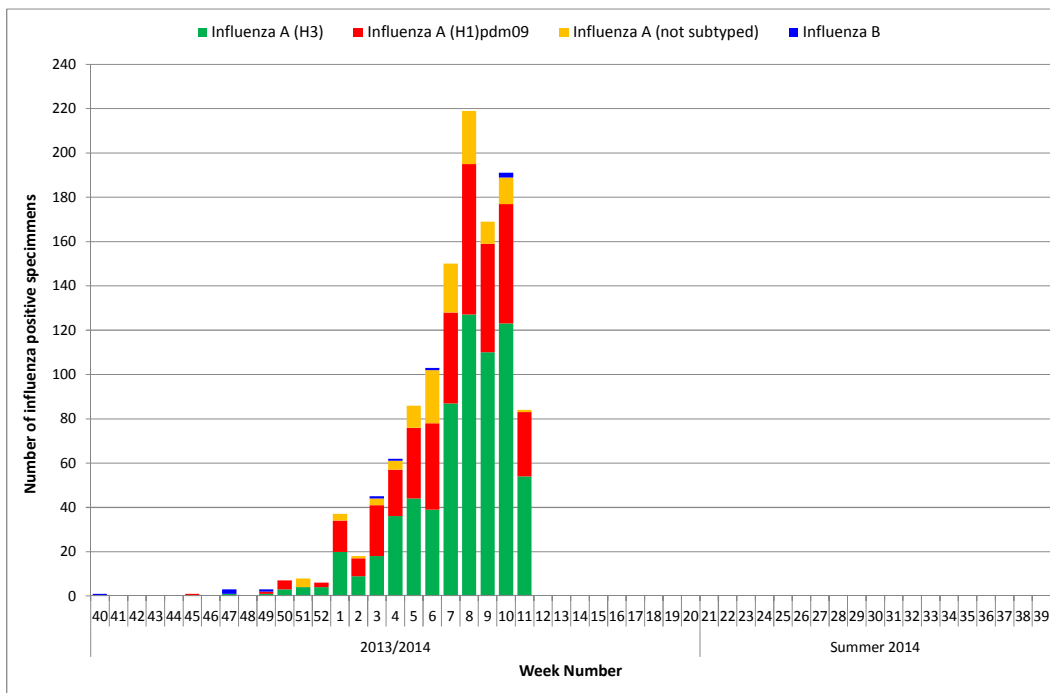


Figure 4: Number of positive influenza specimens by influenza type/subtype from sentinel and non-sentinel sources tested by the NVRL, by week for the 2013/2014 influenza season. *Source: NVRL.*

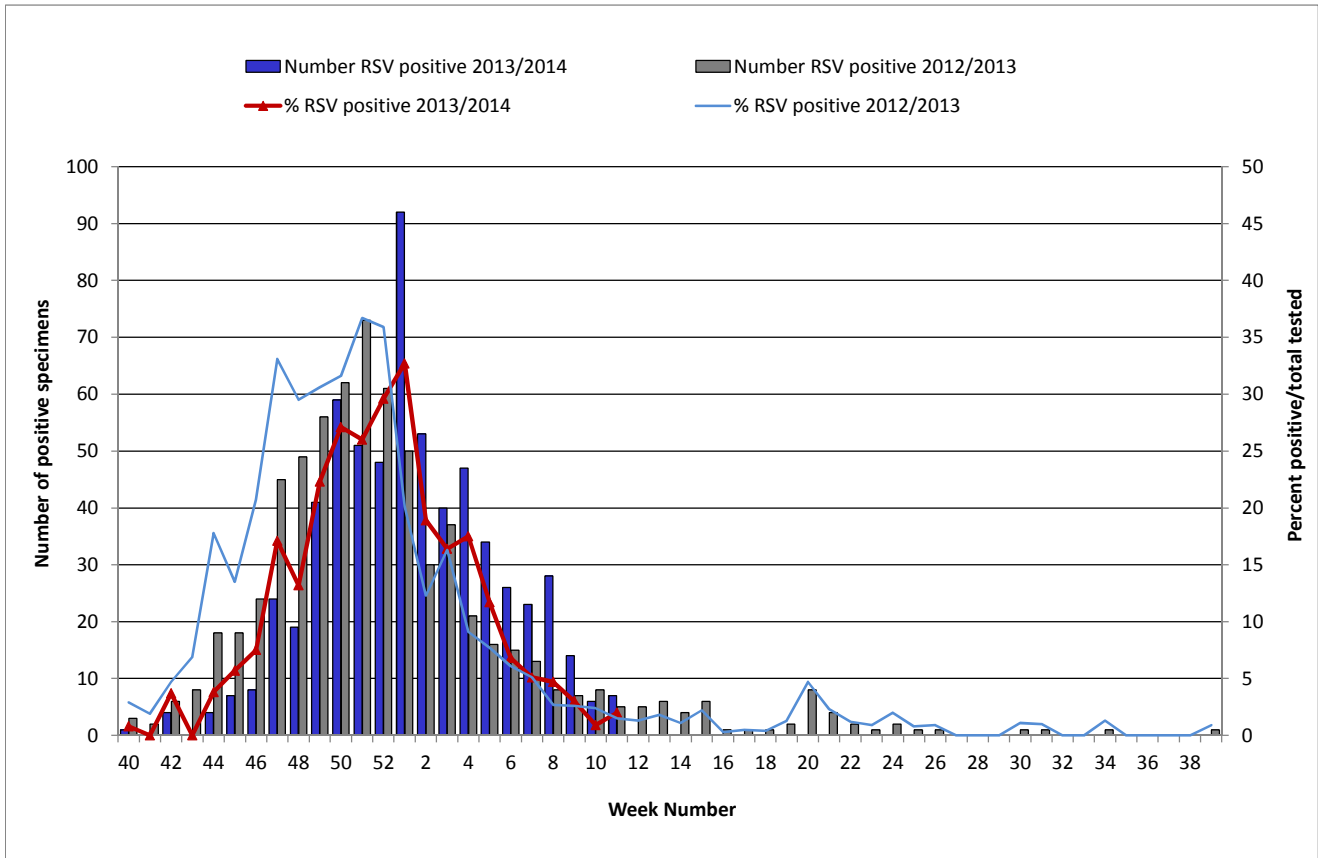


Figure 5: Number and percentage of non-sentinel RSV positive specimens detected by the NVRL during the 2013/2014 season, compared to the 2012/2013 season. Source: NVRL.

Table 1: Number of sentinel and non-sentinel* respiratory specimens tested by the NVRL and positive influenza results, for week 11 2014 and the 2013/2014 influenza season to date. Source: NVRL

Week	Specimen type	Total tested	Number influenza positive	% Influenza positive	Influenza A				Influenza B
					A (H1)pdm09	A (H3)	A (not subtyped)	Total influenza A	
11 2014	Sentinel	24	13	54.2	4	9	0	13	0
	Non-sentinel	347	71	20.5	25	45	1	71	0
	Total	371	84	22.6	29	54	1	84	0
2013/2014	Sentinel	479	223	46.6	92	116	8	216	7
	Non-sentinel	6079	970	16.0	294	564	110	968	2
	Total	6558	1193	18.2	386	680	118	1184	9

Table 2: Number of non-sentinel specimens tested by the NVRL for other respiratory viruses and positive results, for week 11 2014 and the 2013/2014 influenza season to date. Source: NVRL

Week	Specimen type	Total tested	RSV	% RSV	Adenovirus	% Adenovirus	PIV-1	% PIV-1	PIV-2	% PIV-2	PIV-3	% PIV-3	PIV-4	% PIV-4	hMPV	% hMPV
11 2014	Sentinel	24	0	0.0	0	0.0	0	0.0	0	0.0	0	0.0	0	0.0	0	0.0
	Non-sentinel	347	7	2.0	2	0.6	0	0.0	0	0.0	0	0.0	0	0.0	1	0.3
	Total	371	7	1.9	2	0.5	0	0.0	0	0.0	0	0.0	0	0.0	1	0.3
2013/2014	Sentinel	479	7	1.5	2	0.4	3	0.6	3	0.6	1	0.2	0	0.0	6	1.3
	Non-sentinel	6079	636	10.5	59	1.0	47	0.8	27	0.4	12	0.2	1	0.02	91	1.5
	Total	6558	643	9.8	61	0.9	50	0.8	30	0.5	13	0.2	1	0.02	97	1.5

* Please note that non-sentinel specimens relate to specimens referred to the NVRL (other than sentinel specimens) and may include more than one specimen from each case.

3. Regional Influenza Activity by HSE-Area

Influenza activity is based on sentinel GP ILI consultation rates, laboratory data and outbreaks. Widespread influenza activity was reported from HSE-E, -S, -SE and -W, localised activity was reported from HSE-MW, -NE, -NW and sporadic activity was reported from HSE-M during week 11 2014 (figure 6).

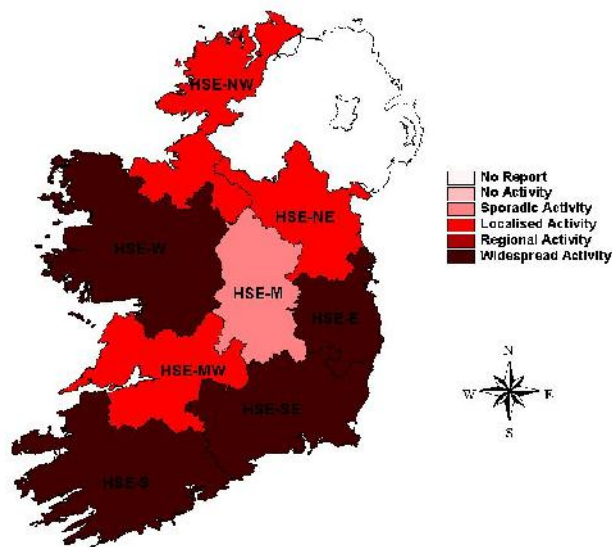


Figure 6: Map of provisional influenza activity by HSE-Area during week 11 2014

Sentinel hospitals

The Departments of Public Health have established at least one sentinel hospital in each HSE-Area, to report data on total, emergency and respiratory admissions on a weekly basis.

During week 11 2014, 311 respiratory admissions were reported from sentinel hospitals, compared to 339 during week 10 2014. Data for week 11 2014 were incomplete; with 6 of 8 sentinel hospitals reporting (fig.7)

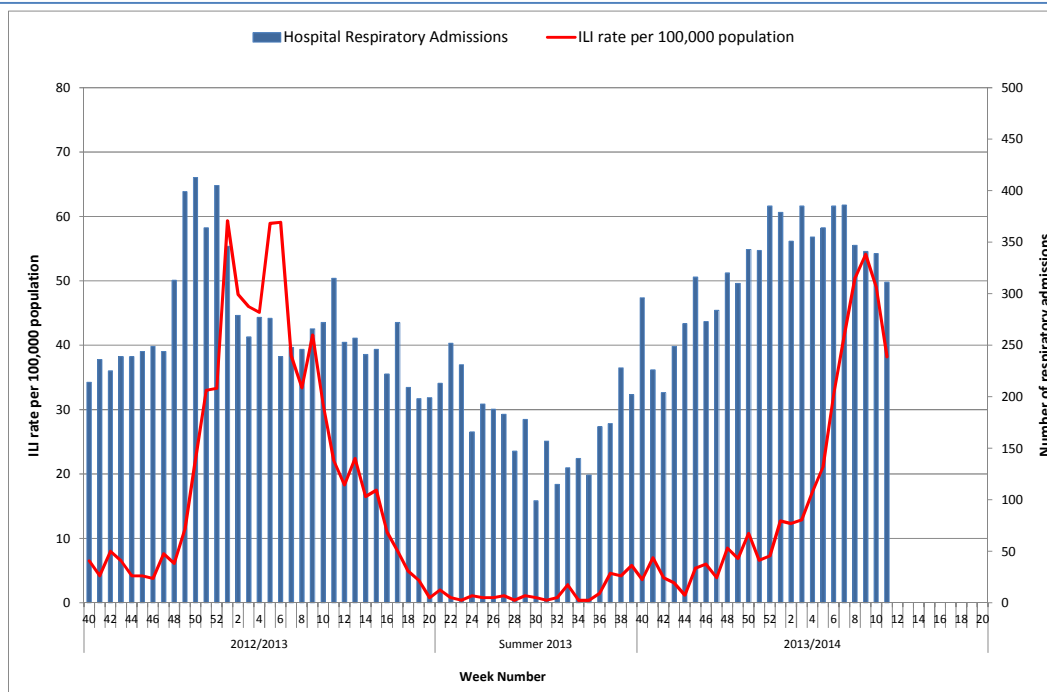


Figure 7: Number of respiratory admissions reported from sentinel hospitals and ILI sentinel GP consultation rate per 100,000 population by week and season. Source: Departments of Public Health - Sentinel Hospitals & ICGP.

4. GP Out-Of-Hours services surveillance

The Department of Public Health in HSE-NE is collating national data on calls to nine of thirteen GP Out-of-Hours services in Ireland. Records with clinical symptoms reported as flu or influenza are extracted for analysis.

The proportion of influenza-related calls to GP Out-of-Hours services decreased to 2.6% during week 11 2014, compared to 3.4% during week 10 2014.

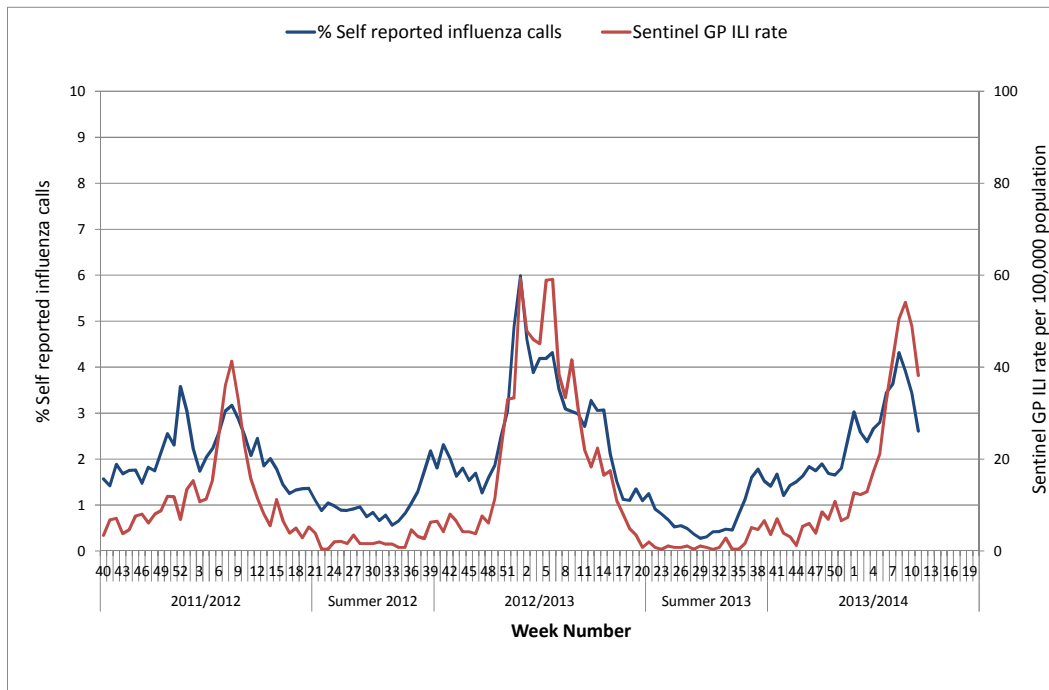


Figure 8: Self-reported influenza-related calls as a proportion of total calls to Out-of-Hours GP Co-ops and sentinel GP ILI consultation rate per 100,000 population by week and season. Source: GP Out-Of-Hours services in Ireland (collated by HSE-NE) & ICGP.

5. Influenza & RSV notifications

Influenza and RSV cases notifications are reported on Ireland's Computerised Infectious Disease Reporting System (CIDR), including all positive influenza/RSV specimens reported from all laboratories testing for influenza/RSV and reporting to CIDR.

Influenza and RSV notifications are reported in the [Weekly Infectious Disease Report for Ireland](#).

6. Influenza Hospitalisations

- Sixty-nine confirmed influenza hospitalised cases were reported to HPSC during week 11 2014 (figure 9), 32 cases were associated with influenza A(H3), 12 with A(H1)pdm09 and 25 with A (not subtyped).
- To date this season, 473 confirmed influenza hospitalised cases were reported to HPSC: 470 cases were associated with influenza A (208 A(H3), 137 A(H1)pdm09, 125 A (not subtyped)) and three with influenza B. The highest age specific rates were in those aged less than 1 year and those aged 65 years and over (table 3).

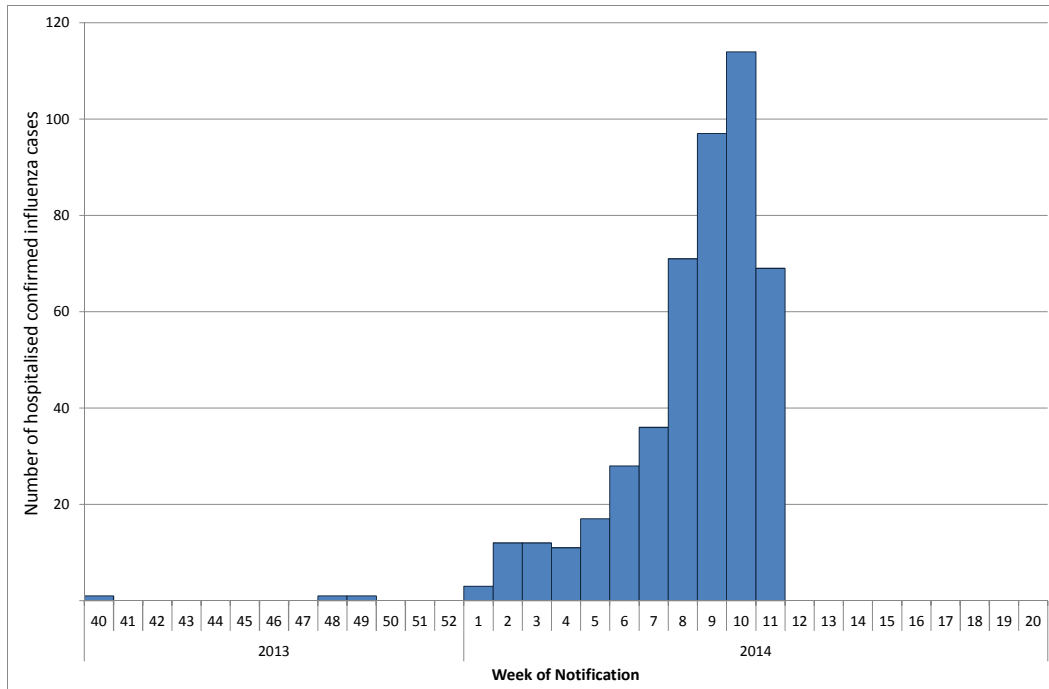


Figure 9: Number of hospitalised confirmed influenza cases reported to HPSC by week of notification for the 2013/2014 influenza season. Source: Computerised Infectious Disease Reporting System (CIDR).

7. Critical Care Surveillance

The Intensive Care Society of Ireland (ICSI) are continuing with the enhanced surveillance system set up during the 2009 pandemic, on all critical care patients with confirmed influenza. A study on severe acute respiratory infections (SARI) in critical care at two ICU sites, one adult and one paediatric, will also continue during the 2013/2014 season. HPSC process and report on this information on behalf of the regional Directors of Public Health/Medical Officers of Health.

- To date this season, 69 confirmed influenza cases were admitted to ICU and reported to HPSC, 33 associated with influenza A(H1)pdm09, 26 with A(H3) and 10 A (not subtyped). The highest age specific rates were in those aged less than 1 year and those aged 65 years and older (table 3).
- Fifty-five paediatric cases (cases aged less than 15 years) with severe acute respiratory infections (SARI) have been admitted to ICU and reported to HPSC this season: 14 associated with influenza A (9 A(H1)pdm09, 3 A(H3), 2 A-not subtyped) (reported above), three with adenovirus, four with parainfluenza 1, two with human metapneumovirus and 32 with RSV.

Table 3: Age specific rates for confirmed influenza cases hospitalised and admitted to critical care during the 2013/2014 influenza season to date. Age specific rates are based on the 2011 CSO census.

Age (years)	Hospitalised		Admitted to ICU	
	Number	Age specific rate per 100,000 pop.	Number	Age specific rate per 100,000 pop.
<1	27	37.3	4	5.5
1-4	44	15.5	5	1.8
5-14	32	5.1	5	0.8
15-24	20	3.4	1	0.2
25-34	53	7.0	3	0.4
35-44	47	6.2	10	1.4
45-54	24	4.1	8	1.4
55-64	52	11.2	11	2.4
≥65	174	32.5	22	4.1
Total	473	10.3	69	1.5

8. Mortality Surveillance

Influenza-associated deaths include all deaths where influenza is reported as the primary/main cause of death by the physician or if influenza is listed anywhere on the death certificate as the cause of death. HPSC receives daily mortality data from the General Register Office (GRO) on all deaths from all causes registered in Ireland. These data have been used to monitor excess all-cause and influenza and pneumonia deaths as part of the influenza surveillance system and the European Mortality Monitoring Project. These data are provisional due to the time delay in deaths' registration in Ireland. <http://www.euromomo.eu/>

- Twenty influenza-associated deaths were reported to HPSC this season; one in a 0-4 year old, one in a 5-14 year old, two in a 15-64 year old and 16 deaths were in patients aged 65 years and over. Eleven deaths were associated with influenza A(H3), five with influenza A(H1)pdm09 and three with influenza A (not subtyped). One death was in a clinical ILI case.
- During week 11 2014, no excess all-cause mortality was reported in Ireland after correcting GRO data for reporting delays with the standardised EuroMOMO algorithm. However, during weeks 6 and 7 2014, excess all-cause mortality was reported in those aged 65 years and older.

9. Outbreak Surveillance

Ten acute respiratory outbreaks were reported to HPSC (via Ireland's Computerised Infectious Disease Reporting System) during week 11 2014, nine were associated with influenza A (5 A(H3), one with A(H1)pdm09 and 3 A-not subtyped) and one was associated with an unidentified pathogen. To date this season, 58 acute respiratory outbreaks were reported to HPSC from from all HSE-Areas. Forty outbreaks were associated with influenza A (30 with A(H3), one with A(H1)pdm09, two with both A(H3) and A(H1)pdm09 and 7 A-not subtyped). The remaining 18 outbreaks were influenza negative (four were associated with RSV, two with hMPV and 12 were associated with unidentified pathogens). The majority of these outbreaks were in residential care facilities/community hospital units mainly for the elderly/those with intellectual disabilities. It should be noted that family outbreaks are not recorded in this report. The number of influenza/ILI outbreaks reported to HPSC is shown in figure 10.

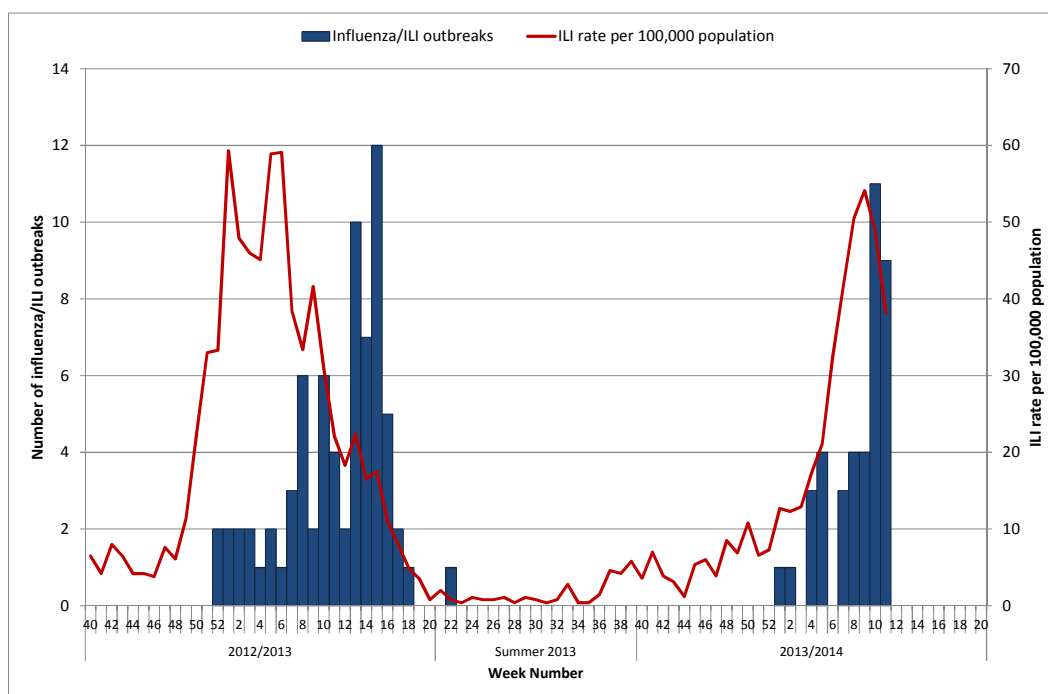


Figure 10: Number of influenza/ILI outbreaks and national sentinel GP ILI consultation rate per 100,000 population by week and influenza season. Source: Computerised Infectious Disease Reporting System (CIDR) & ICGP.

10. International Summary

Based on various influenza indicators, the status of the 2013/2014 influenza season has varied considerably across EU/EEA Member States in terms of the phase of the epidemic, its intensity and the dominant virus subtype. In North America, influenza activity continued to decrease overall, but remained elevated in some regions. Influenza A(H1N1)pdm09 continued as the predominant circulating virus, and influenza B detections increased slightly throughout the region. See [WHO](#) and [ECDC](#) influenza surveillance reports for further information. ECDC have published a risk assessment for the 2013/2014 influenza season, [see here](#).

- Further information is available on the following websites:
 - Northern Ireland <http://www.fluawareni.info/>
 - Public Health England <http://www.hpa.org.uk/Topics/InfectiousDiseases/InfectionsAZ/SeasonalInfluenza/>
 - Europe – ECDC <http://ecdc.europa.eu/>
 - United States CDC <http://www.cdc.gov/flu/weekly/fluactivitysurv.htm>
 - Public Health Agency of Canada <http://www.phac-aspc.gc.ca/fluwatch/12-13/index-eng.php>

11. Novel viruses

- For up to date information on human infection with avian influenza A(H7N9) virus in China including the current case numbers and WHO risk assessment of the situation please see [here](#).
- Information on Middle Eastern Respiratory Syndrome Coronavirus (MERS-CoV), including the latest ECDC rapid risk assessment is available on the [ECDC website](#). Further information and guidance documents are also available on the [HPSC](#) and [WHO](#) websites.

12. Flusurvey

- For information on Flusurvey.ie, Ireland's first online influenza surveillance survey, please see the [here](#).

13. Influenza Vaccine Recommendations

The WHO vaccine strain selection committee recommended that vaccines for use in the 2014/2015 influenza season (northern hemisphere winter) contain the following: an A/California/7/2009 (H1N1)pdm09-like virus; an A/Texas/50/2012 (H3N2)-like virus; a B/Massachusetts/2/2012-like virus (Yamagata lineage), [see here](#).

Further information on influenza is available at www.hpsc.ie

This report was prepared by Lisa Domegan and Joan O'Donnell, HPSC. HPSC wishes to thank the sentinel GPs, the ICGP, NVRL, Departments of Public Health, ICSI and HSE-NE for providing data for this report.