

Influenza Weekly Surveillance Report



A REPORT BY THE HEALTH PROTECTION

SURVEILLANCE CENTRE IN COLLABORATION WITH THE IRISH COLLEGE OF GENERAL PRACTITIONERS,
THE NATIONAL VIRUS REFERENCE LABORATORY & THE DEPARTMENTS OF PUBLIC HEALTH

Week 20 2009 (May 11th - 17th 2009)

Summary

During week 20 2009, influenza activity increased in Ireland. Influenza-like illness (ILI) consultation rates increased, but are well below baseline thresholds. Two non-sentinel specimens tested by the NVRL were positive for influenza A(H3) during week 20 2009 (both from the same patient).

Background

This is the ninth season of influenza surveillance using computerised sentinel general practices in Ireland. The Health Protection Surveillance Centre (HPSC) is working in collaboration with the Irish College of General Practitioners (ICGP), the National Virus Reference Laboratory (NVRL) and the Departments of Public Health on this sentinel surveillance project. Fifty-four sentinel general practices have been recruited to report on the number of patients with ILI on a weekly basis. ILI is defined as the sudden onset of symptoms with a temperature of 38°C or more, with two or more of the following: headache, sore throat, dry cough and myalgia.

Sentinel GPs send a combined nasal and throat swab, to the NVRL, on at least one patient per week where a clinical diagnosis of ILI is made during the influenza season. This report includes data on ILI cases reported by sentinel GPs, influenza test results from the NVRL, influenza notifications, registered deaths attributed to influenza, and regional influenza activity reported by the Departments of Public Health.

Results

Clinical Data

Sentinel GPs reported 11 ILI cases during week 20 2009. This corresponds to an ILI consultation rate of 6.3 per 100,000 population, which is an increase in comparison to the updated rate of 3.5 per 100,000 population reported during week 19 2009 (figure 1). This rate is well below the baseline threshold of 17.8 per 100,000 population. Forty-five of 54 (83.3%) sentinel general practices reported during week 20 2009, with nine reporting ILI cases.

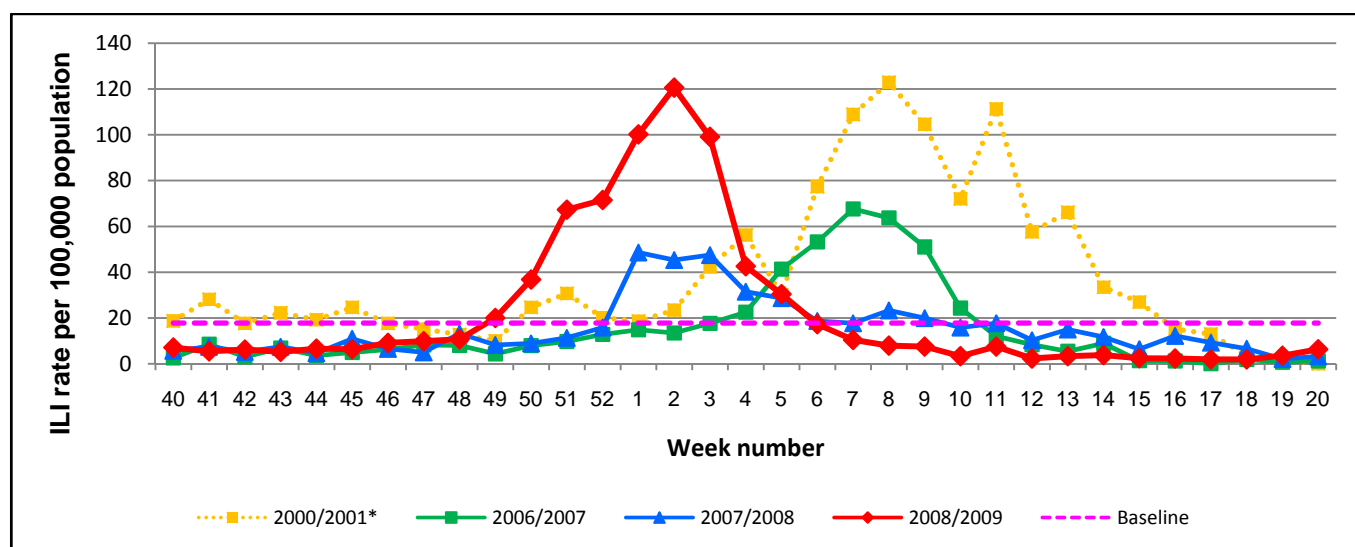


Figure 1: Influenza baseline activity threshold and GP consultation rate for ILI per 100,000 population by week, during the 2000/2001*, 2006/2007, 2007/2008 and 2008/2009 influenza seasons.

*Highest recorded levels of ILI activity since initiation of sentinel surveillance

Results (continued)

During week 20 2009, one ILI case was reported in the 0-4 year age group (8.0 per 100,000 population), one in the 5-14 year age group (4.3 per 100,000 population) and nine cases in the 15-64 year age group (7.5 per 100,000 population), as shown in figure 2. No ILI cases were reported in the those aged 65 years and older.

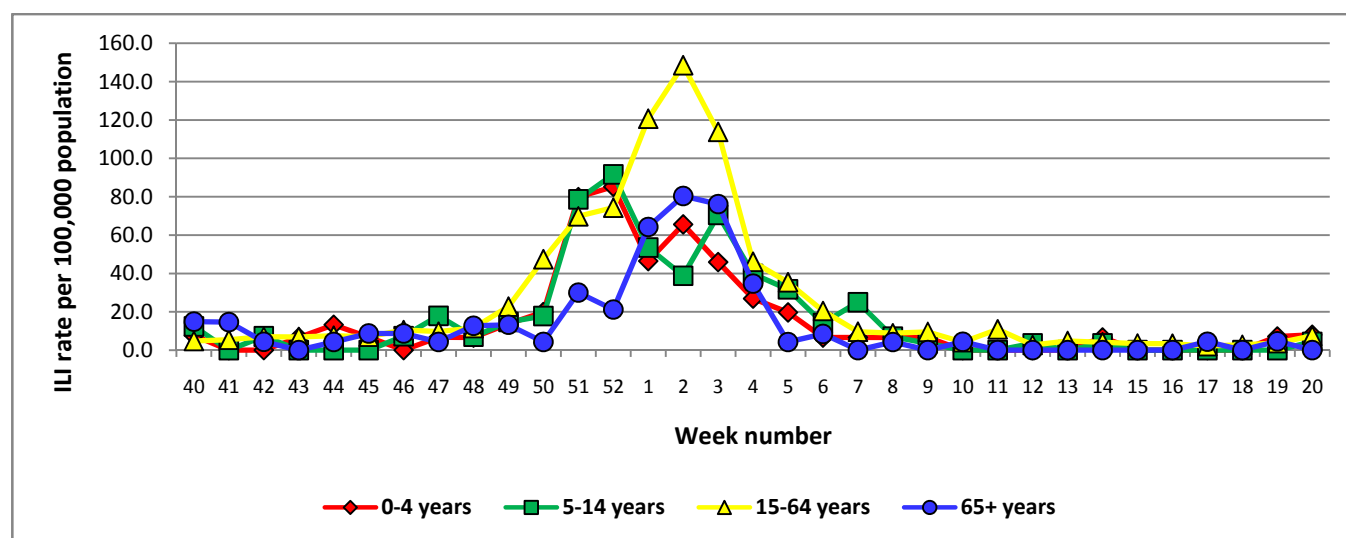


Figure 2: Age specific GP consultation rate* for ILI per 100,000 population by week during the 2008/2009 influenza season

Influenza A(H1N1) infection

Please see separate report by HPSC on Influenza A(H1N1) infection for Week 20 2009, available at <http://www.hpsc.ie/hpsc/A-Z/EmergencyPlanning/AvianPandemicInfluenza/SwineInfluenza/Surveillance%20Reports/>

Oseltamivir Resistance in Europe

During the 2008/2009 influenza season, the NVRL has conducted nucleotide sequencing on 10 influenza A(H1) specimens taken by sentinel GPs in Ireland, nine (90%) of which were resistant to oseltamivir and one was sensitive. During the 2007/2008-influenza season, seven of 63 specimens (11.1%) tested by the NVRL showed resistance to oseltamivir.

Preliminary results from antiviral drug susceptibility testing among seasonal influenza viruses circulating in Europe have revealed that some of the influenza A (H1N1) viruses in circulation this season are resistant to the antiviral drug, oseltamivir. In Europe, all influenza A(H3N2) viruses tested were sensitive to oseltamivir (n=653) and zanamivir (n=612), whereas 100% of the 644 A(H3N2) viruses tested were resistant to M2 inhibitors. Of the influenza A(H1N1) viruses analysed, 100% were sensitive to zanamivir (n=259) and 99.2% were sensitive to M2 inhibitors (n=124) but 98% were resistant to oseltamivir (n=259). One hundred and seventeen influenza B isolates were analysed and all were sensitive to oseltamivir and 113 influenza B isolates were all sensitive to zanamivir.

Latest information on oseltamivir resistance in Europe:

http://ecdc.europa.eu/en/Health_topics/Seasonal%20Influenza/Epidemiological_updates.aspx

http://ecdc.europa.eu/en/Health_Topics/influenza/antivirals.aspx

In the UK, since week 40 2008 all of the 237 influenza A(H3) isolates that have been tested for drug sensitivity have been found to be sensitive to oseltamivir and zanamivir, but resistant to amantadine. Eighty-six influenza A(H1) specimens have been tested for anti-viral drug resistance, 85 (98.8%) of these were resistant to oseltamivir and all were sensitive to zanamivir and amantadine. Fifty-five influenza B specimens have been tested and all were sensitive to oseltamivir and zanamivir.

Latest information on oseltamivir resistance in the UK:

<http://www.hpa.org.uk/web/HPAweb&Page&HPAwebAutoListName/Page/1191942171468>

* Please note the denominator used in the age specific consultation rate is from the 2006 census data; this assumes that the age distribution of the sentinel general practices is similar to the national age distribution.

Virological Data from the NVRL

Three sentinel specimens were tested by the NVRL during week 20, none of which were positive for influenza. The NVRL also tested 74 non-sentinel specimens taken during week 20 2009, mainly from hospitalised paediatric cases. Two non-sentinel specimens (from the same patient) tested positive for influenza A(H3), and two specimens tested positive for respiratory syncytial virus (RSV) during week 20 2009 (table 1).

Please note that non-sentinel specimens include all specimens referred to the NVRL, these specimens are mainly from hospitals and some GPs and may include more than one specimen from each case.

The NVRL has completed genetic characterisation for two influenza A (H3) and five influenza B viruses so far this season. Both A(H3) viruses were characterised as A/Brisbane/10/2007-like virus which is included in the 2008/2009 influenza vaccine. All five influenza B viruses were characterised as B/Malaysia/2506/2004-like (B/Victoria/2/87 lineage) which is not included in the 2008/2009 influenza vaccine. This reflects the situation in Europe where the majority of influenza B viruses characterised to date are B/Victoria lineage.

Table 2 shows the number and percentage of sentinel specimens that tested positive for influenza, by type and subtype, for the 2008/2009-influenza season to date. Influenza positive specimens by HSE area and age group (in years), for week 20 2009 and the 2008/2009 season to date are shown in tables 3 and 4, respectively. Figure 3 compares the ILI consultation rates by season and the number of positive influenza specimens tested by the NVRL. Figure 4 compares the number and percentage of non-sentinel RSV positive specimens detected during the 2007/2008 and 2008/2009 influenza seasons.

Table 1: Number of sentinel and non-sentinel[†] respiratory specimens and positive results for week 20 2009 and season to date

Week Number	Specimen Type	Total Specimens	No. Influenza Positive	% Influenza Positive	Influenza A	Influenza B	RSV	% RSV Positive
20 2009	Sentinel	3	0	0.0	0	0	NA	NA
	Non-Sentinel	74	2	2.7	2	0	2	2.7
	Total	77	2	2.6	2	0	2	2.6
Season to date	Sentinel	352	201	57.1	147	54	NA	NA
	Non-Sentinel	2736	72	2.6	58	14	386	14.1
	Total	3088	273	8.8	205	68	386	12.5

Table 2: Number and percentage of positive sentinel specimens by type and subtype, 2008/2009 season to date

2008/2009 Season to date [‡]						
Influenza (all types)		Influenza A (all subtypes)	Influenza B	Influenza A Unsubtyped	Influenza A(H1)	Influenza A(H3)
		(n=200)		(n=146)		
Number positive	201	147	54	0	18	129
% Positive	57.1	73.1	26.9	0.0	12.2	87.8

[†] Please note that non-sentinel specimens include all specimens referred to the NVRL, these specimens are mainly from hospitals and some GPs and may include more than one specimen from each case

[‡] Number of sentinel specimens tested = 352

Table 3: Total number of sentinel and non-sentinel† influenza A and B positive specimens by HSE area for week 20 2009 and the 2008/2009 season to date

	Week 20 2009			Season to date		
	Flu A	Flu B	Total	Flu A	Flu B	Total
HSE-E	0	0	0	77	20	97
HSE-M	0	0	0	17	11	28
HSE-MW	2	0	2	20	5	25
HSE-NE	0	0	0	17	2	19
HSE-NW	0	0	0	11	9	20
HSE-SE	0	0	0	26	3	29
HSE-S	0	0	0	24	6	30
HSE-W	0	0	0	4	12	16
HSE area unknown	0	0	0	9	0	9
Total	2	0	2	205	68	273

Table 4: Total number of sentinel and non-sentinel† influenza A and B positive specimens by age group (in years) for week 20 2009 and the 2008/2009 season to date

	Week 20 2009			Season to date		
	Flu A	Flu B	Total	Flu A	Flu B	Total
0-4 years	0	0	0	29	8	37
5-14 years	0	0	0	15	6	21
15-64 years	2	0	2	151	49	200
65 years and older	0	0	0	7	4	11
Age group unknown	0	0	0	3	1	4
Total	2	0	2	205	68	273

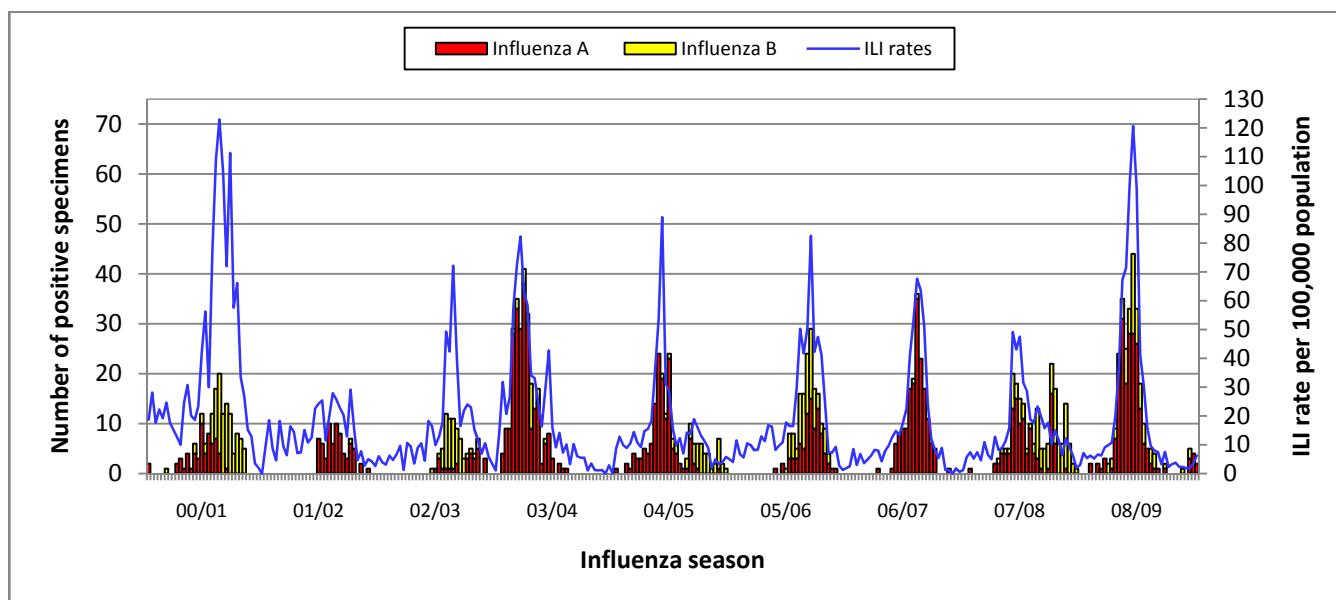


Figure 3: GP ILI consultation rate per 100,000 population and the number of positive influenza specimens detected by the NVRL by week and season, 2000/2001 - 2008/2009

† Please note that non-sentinel specimens include all specimens referred to the NVRL, these specimens are mainly from hospitals and some GPs and may include more than one specimen from each case

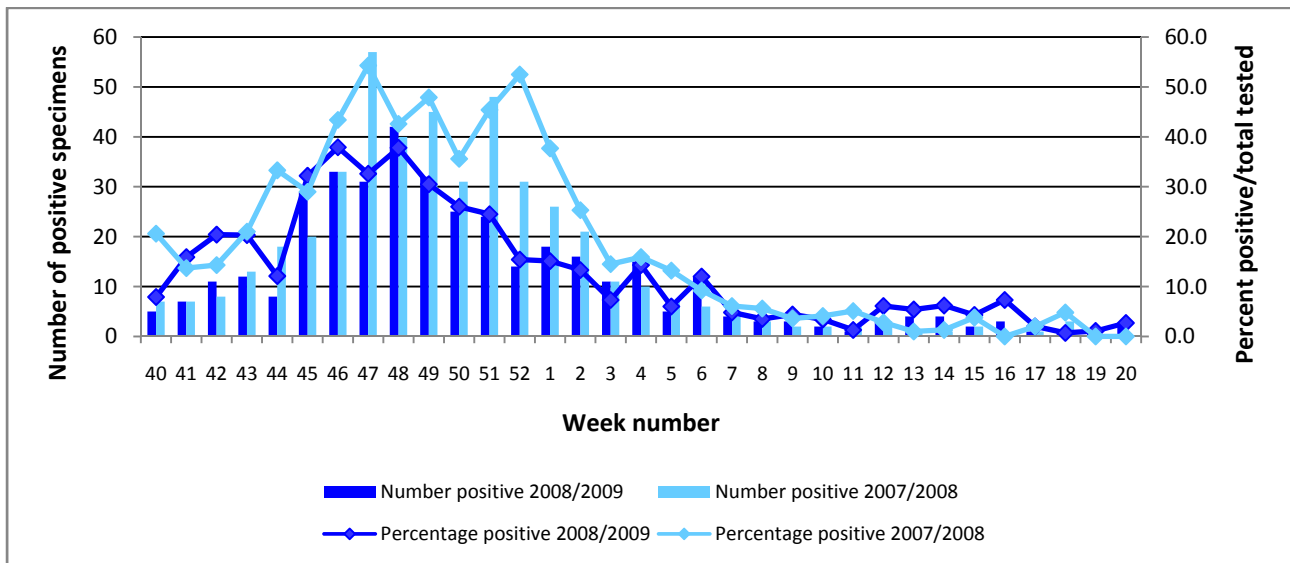


Figure 4. Number and percentage of non-sentinel RSV positive specimens detected during the 2007/2008 and 2008/2009 influenza seasons

Weekly Influenza Notifications

During week 20 2009 (week 19 2009 of epidemiological calendar), no influenza cases were notified to HPSC. It should be noted that 87 influenza (type unspecified) cases notified to HPSC during the 2008 summer season (weeks 21-39 2008) were possible cases (i.e. clinical cases with no laboratory confirmation). These were late GP notifications from HSE-E for 2007. Influenza cases notified to HPSC during the summer of 2008 and during the 2008/2009 influenza season are shown in figure 5 and compared to GP ILI consultation rates.

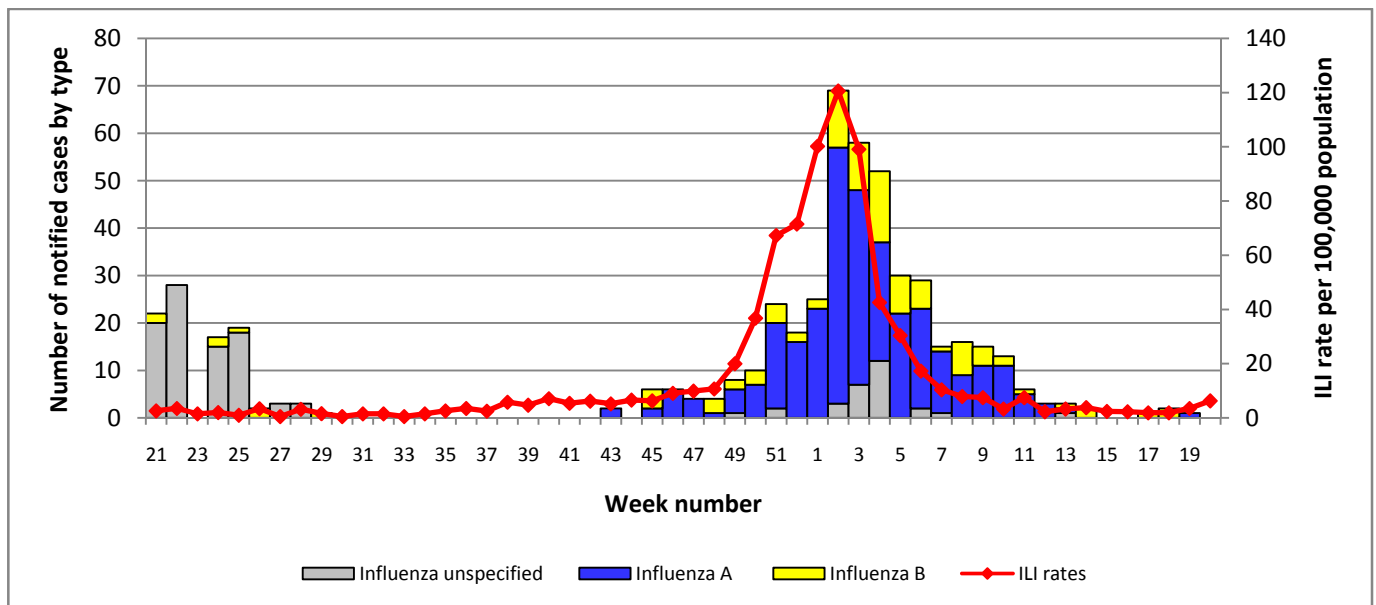


Figure 5: Number of notifications of influenza by type and week of notification compared to sentinel GP ILI consultation rates per 100,000 population during the summer of 2008 and the 2008/2009 influenza season[§]

[§] Notification data are provisional and were extracted from [CIDR](#) on the 20/05/2009 at 11.15

Baseline thresholds

A baseline threshold of 17.8 cases per 100,000 population will be used alongside expert opinion to assess influenza activity during the 2008/2009 influenza season in Ireland. This baseline was derived from the EISS method using a mathematical algorithm to identify the influenza activity period of the previous eight seasons.

Mortality Data

No deaths attributed to influenza were reported to HPSC by the General Register Office during week 20 2009.

Outbreak Reports

No influenza/ILI outbreaks were reported to HPSC during week 20 2009. During the 2008/2009-influenza season to date, six influenza/ILI outbreaks have been reported to HPSC.

Regional Influenza Activity by HSE-Area

Influenza activity is reported on a weekly basis from the Departments of Public Health. Influenza activity is based on sentinel GP ILI consultation rates, laboratory confirmed influenza cases and ILI/influenza outbreaks. Each Department of Public Health has established at least one sentinel hospital in each HSE area, to report total hospital admissions, total emergency admissions and total respiratory admissions data on a weekly basis. Sentinel primary and secondary schools were also established in each HSE area in close proximity to the sentinel GPs, reporting absenteeism data on a weekly basis. During week 19 2009, no increases in respiratory admissions were reported by sentinel hospitals and no increases in school absenteeism were reported by sentinel schools. No activity was reported by HSE-NE, -S and -W and while sporadic influenza activity (based on isolated cases of ILI and/or virological results) was reported by HSE-E, -M, -MW, -NW and -SE during week 19 2009 (figure 6).

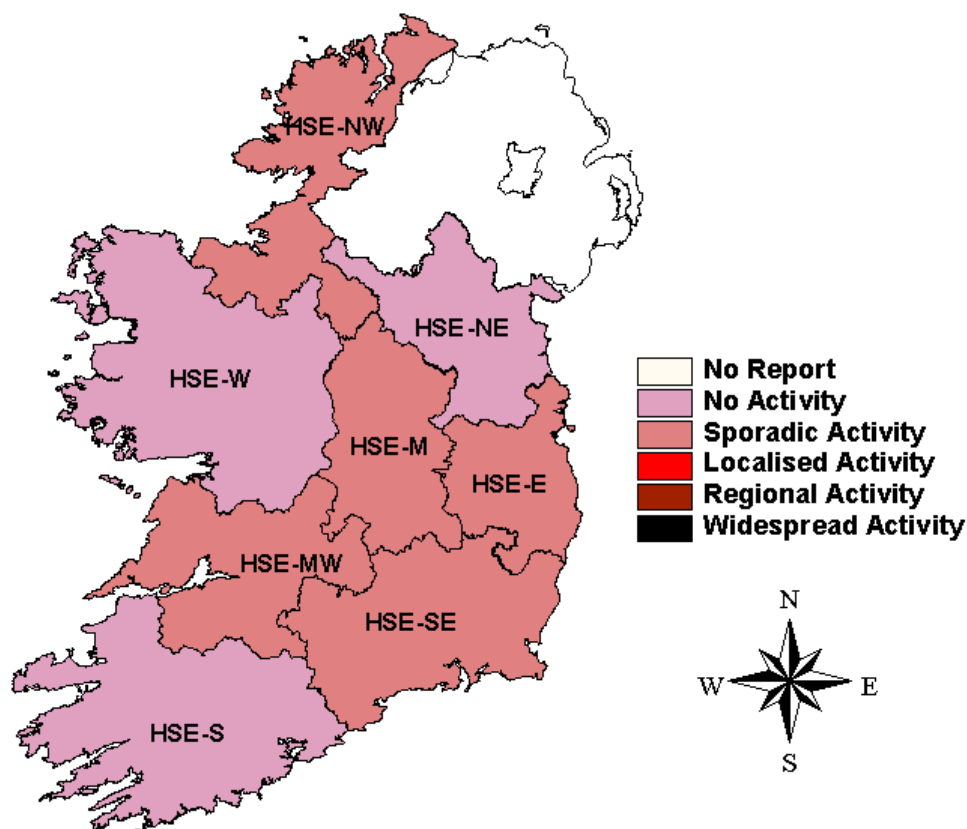


Figure 6: Map of influenza activity by HSE area during week 19 2009

Influenza Activity in Northern Ireland

During week 20 2009, 23 ILI cases and seven clinical influenza cases were reported in Northern Ireland, corresponding to a combined rate of 21.7 per 100,000 population, an increase compared to the updated rate of 15.4 per 100,000 population reported during week 19 2009. During week 20 2009, one non-sentinel specimen tested positive for influenza A(H1N1). <http://www.cdscni.org.uk>

Influenza Activity in England, Scotland & Wales

No information was available on influenza surveillance in England, Scotland and Wales for weeks 17, 18 and 19 2009 at the time of writing.

Seasonal influenza surveillance data for the UK can be accessed at the following link:

http://www.hpa.org.uk/infections/topics%5Faz/influenza/seasonal/activity0809/weekly_summary.htm

Influenza A(H1N1) surveillance data for the UK can be accessed at the following link:

http://www.hpa.org.uk/web/HPAweb&HPAwebStandard/HPAweb_C/1242111707721

Influenza Activity in Europe

Influenza surveillance data for Europe can be accessed at the following link:

<http://www.eiss.org/index.cgi>

Influenza Activity in Canada

Influenza surveillance data for Canada can be accessed at the following link:

<http://www.phac-aspc.gc.ca/fluwatch/index.html>

Influenza Activity in the United States

Influenza surveillance data for the United States can be accessed at the following link:

<http://www.cdc.gov/flu/weekly/fluactivity.htm>

Influenza Activity Worldwide

Global influenza surveillance data can be accessed at the following link:

<http://gamapserver.who.int/GlobalAtlas/home.asp>

Avian Influenza

The Ministry of Health of Egypt reported a new confirmed human case of avian influenza on 15th May 2009. The case is a 5 year old female from Tama District, Sohag Governorate. Her symptoms began on 7th May and she was admitted in Sohag Fever Hospital on 9th May where she received oseltamivir. She is in a stable condition. The case was confirmed by the Egyptian Central Public Health Laboratories on 10th May 2009. Investigations into the source of infection indicate close contact with dead and sick poultry. The Ministry of Health of Egypt also announced the deaths of previously confirmed cases of H5N1 as follows; 6-year-old male from Qaliobia Governorate; 33-year-old female from Kfr El Sheikh Governorate and 25-year-old female from Cairo Governorate. Of the 69 cases confirmed to date in Egypt, 26 (37.7%) have been fatal.

As of 15th May 2009, 424 confirmed human cases and 261 (61.6%) deaths from avian influenza A (H5N1) have been reported to the WHO from Azerbaijan, Bangladesh, Cambodia, China, Djibouti, Egypt, Indonesia, Iraq, Lao Peoples Democratic Republic, Myanmar, Nigeria, Pakistan, Thailand, Turkey and Viet Nam.

Further information on avian influenza is available on the following websites:

WHO http://www.who.int/csr/disease/avian_influenza/en/

HPSC <http://www.ndsc.ie/hpsc/A-Z/Respiratory/AvianInfluenza/>

ECDC <http://ecdc.europa.eu/en/>

Northern Hemisphere Influenza Vaccine for the 2008/2009 and 2009/2010 Seasons

For the 2008/2009 influenza season in the Northern Hemisphere, the members of the WHO Collaborating Centres on Influenza have recommended that influenza vaccines contain the following strains:

- an A/Brisbane/59/2007 (H1N1)-like virus
- an A/Brisbane/10/2007 (H3N2)-like virus^{§§}
- a B/Florida/4/2006-like virus^{##}

^{§§}*A/Brisbane/10/2007 is a current southern hemisphere vaccine virus.*

^{##}*B/Florida/4/2006 and B/Brisbane/3/2007 (a B/Florida/4/2006-like virus) are current southern hemisphere vaccine viruses.*

http://www.who.int/csr/disease/influenza/recommendations2008_9north/en/index.html

For the 2009/2010 influenza season in the Northern Hemisphere, the members of the WHO Collaborating Centres on Influenza have recommended that influenza vaccines for the contain the following strains:

- an A/Brisbane/59/2007 (H1N1)-like virus^{**}
- an A/Brisbane/10/2007 (H3N2)-like virus^{††}
- a B/Brisbane/60/2008-like virus^{‡‡}

^{**}*A/Brisbane/59/2007 is a current vaccine virus; A/South Dakota/6/2007 (an A/Brisbane/59/2007-like virus) is a current vaccine virus used in live attenuated vaccines.*

^{††}*A/Brisbane/10/2007 and A/Uruguay/716/2007 (an A/Brisbane/10/2007-like virus) are current vaccine viruses.*

^{‡‡}*B/Brisbane/33/2008 is a B/Brisbane/60/2008-like virus.*

http://www.who.int/csr/disease/influenza/recommendations2009_10north/en/index.html.

Further information on influenza can be found on the [HPSC website](#)

Acknowledgements

HPSC, ICGP and NVRL wish to thank the sentinel GPs who have participated in the GP sentinel surveillance system and who have contributed towards this report

This report was produced by Sarah Jackson and Dr Joan O'Donnell, HPSC