



# Weekly report on the epidemiology of COVID-19 in Ireland

## Week 49, 2023

- The epidemiological weeks in this report, run from Sunday to Saturday. Please refer to the [HPSC website](#) for a complete list of epidemiological weeks with start and end dates for 2020-2023.
- Data for this report are based on cases notified on the Computerised Infectious Disease Reporting (CIDR) up to midnight 09/12/2023. Data were extracted from CIDR system on 12/12/2023. Data are provisional and subject to ongoing review, validation and update. As a result, figures in this report may differ from previously published figures.
- Data should be interpreted in the context of the current testing policy. Testing policies can affect the number and age distribution of confirmed cases notified on CIDR. Information on the current testing policy in Ireland can be found [here](#)
- **From week 47, 2023 this report uses population data from Census 2022. Rates may therefore differ from those reported previously which used population data from Census 2016.**

## Key points

### Notified confirmed cases

- In week 49 (between December 03 and December 09 2023) there were 509 new confirmed COVID-19 cases reported on CIDR. This is an increase of 15.2% compared to week 48 when there were 442 confirmed COVID-19 cases notified.
- The highest number of new confirmed COVID-19 cases in week 49 was in the age group of 75-84 years with 22% of notified cases in week 49.

### Laboratory data of SARS-CoV-2 PCR tests

- In week 49, a total of 5,906 SARS-CoV-2 tests were performed, of which 593 (10%) were positive. This is an increase compared to the previous week, 48, when 8.7% were positive.

### Deaths

- Since the start of the pandemic 9,432 COVID-19 deaths among notified COVID-19 cases have been reported on CIDR. Of these, 4 had a date of death in week 49.

**Table 1:** Summary characteristics of COVID-19 cases notified in Ireland during week 49, 2023 and 2023 to date

	Week 49, 2023		Total 2023	
	Number	Percentage	Number	Percentage
Total number of confirmed cases	509		33,250	
Incidence rate of confirmed cases per 100,000 population	9.9		645.7	
<b>Severe cases</b>				
Number of cases hospitalised	243*	47.74	14,182*	42.65
Number of cases admitted to ICU	1*	0.20	145*	0.44
Number of deaths among confirmed cases	5*	0.98	742*	2.23

*\* The number of cases hospitalised, cases admitted to ICU and deaths described in the above table relate only to COVID-19 cases who were notified during this reporting period, and where the outcome is known at the time of reporting. It does not reflect all hospitalisations, ICU admissions and deaths related to COVID-19 which occurred during the period covered by the report. It also does not reflect the final number of cases hospitalised, admitted to ICU or deaths for these cases notified during this period as the outcome may not yet have occurred, or is yet to be notified*

## Confirmed cases of COVID-19

Since the start of 2023, a total of 33,250 confirmed COVID-19 cases have been notified on CIDR. In the past week, week 49 2023, 509 confirmed COVID-19 cases were reported on CIDR. This is an increase of 15.2% compared to week 48 when 442 confirmed COVID-19 cases were notified. Figure 1 shows the epidemiological curve of COVID-19 cases notified in Ireland for the last one year to week 49 2023. Data since the start of the pandemic is available on the [Epidemiology of COVID-19 in Ireland infohub](#).

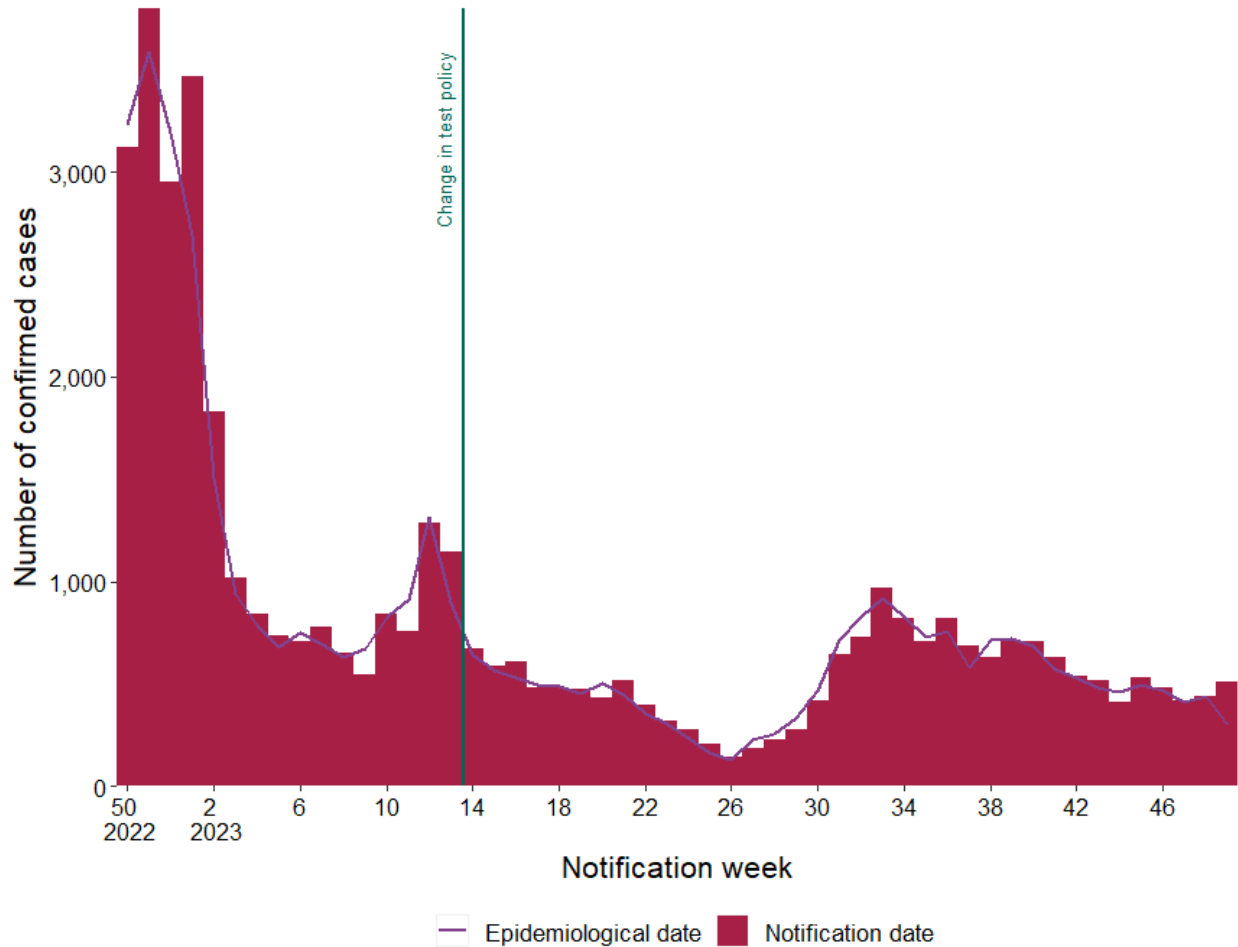


Figure 1a: Number of confirmed COVID-19 cases by notification week and epidemiological date in Ireland between week 50, 2022 and week 49, 2023. The red bars represent the number of confirmed cases by notification date. The purple line represents the number of cases by epidemiological date. The dark blue horizontal lines indicate a change in test policy<sup>1</sup>

<sup>1</sup> Since 30/03/2023 (week 13, 2023), community test centres closed and PCR testing was only performed based on clinical assessment.

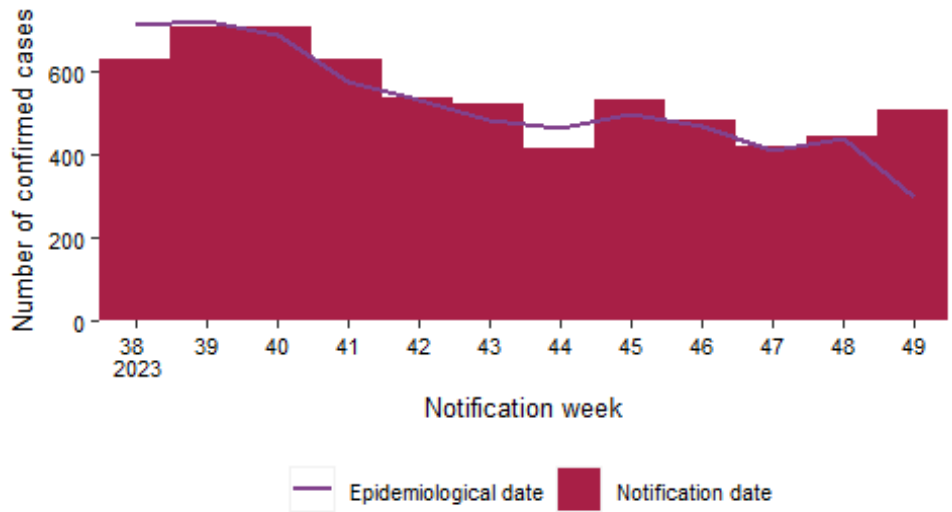
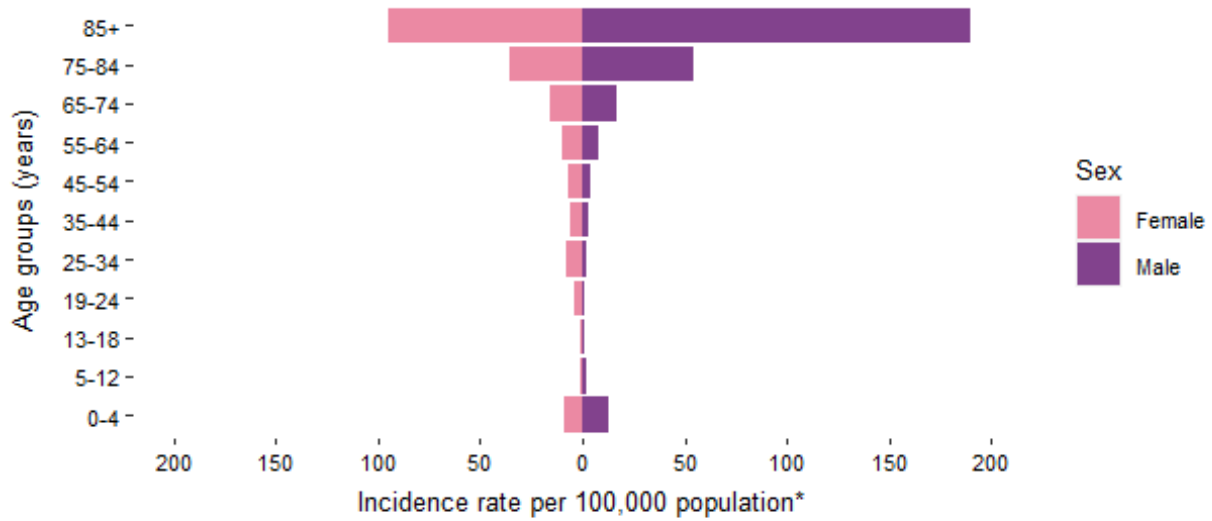


Figure 1b: Number of confirmed COVID-19 cases by notification week and epidemiological date in Ireland in the last 12 weeks. The red bars represent the number of confirmed cases by notification date. The purple line represents the number of cases by epidemiological date.

## Confirmed COVID-19 cases by age and sex

**Table 2:** Summary characteristics by age and sex of COVID-19 cases notified in Ireland during week 49, 2023 and 2023 to date

	Week 49, 2023		Total 2023	
	Number	Percentage	Number	Percentage
<b>Gender</b>				
Males	245	48.1	14,546	43.7
Females	264	51.9	18,704	56.3
M:F ratio	0.93		0.78	
<b>Age (years)</b>				
Mean age	62		58	
Median age	71		62	
Age range	0 - 100		0 - 103	
<b>Age groups (years)</b>				
0-4	33	6.5	1,532	4.6
5-12	9	1.8	359	1.1
13-18	5	1.0	436	1.3
19-24	9	1.8	1,039	3.1
25-34	30	5.9	3,116	9.4
35-44	38	7.5	3,776	11.4
45-54	40	7.9	3,624	10.9
55-64	51	10.0	3,769	11.3
65-74	72	14.1	4,622	13.9
75-84	112	22.0	6,381	19.2
85+	110	21.6	4,592	13.8
Unknown	NA	0.0	4	0.0



\*Excluding 0 for whom age is unknown, 0 for whom sex is unknown and 0 for whom both are unknown

Figure 2: Age and sex specific incidence rates of confirmed COVID-19 cases per 100,000 population for current week 49, 2023

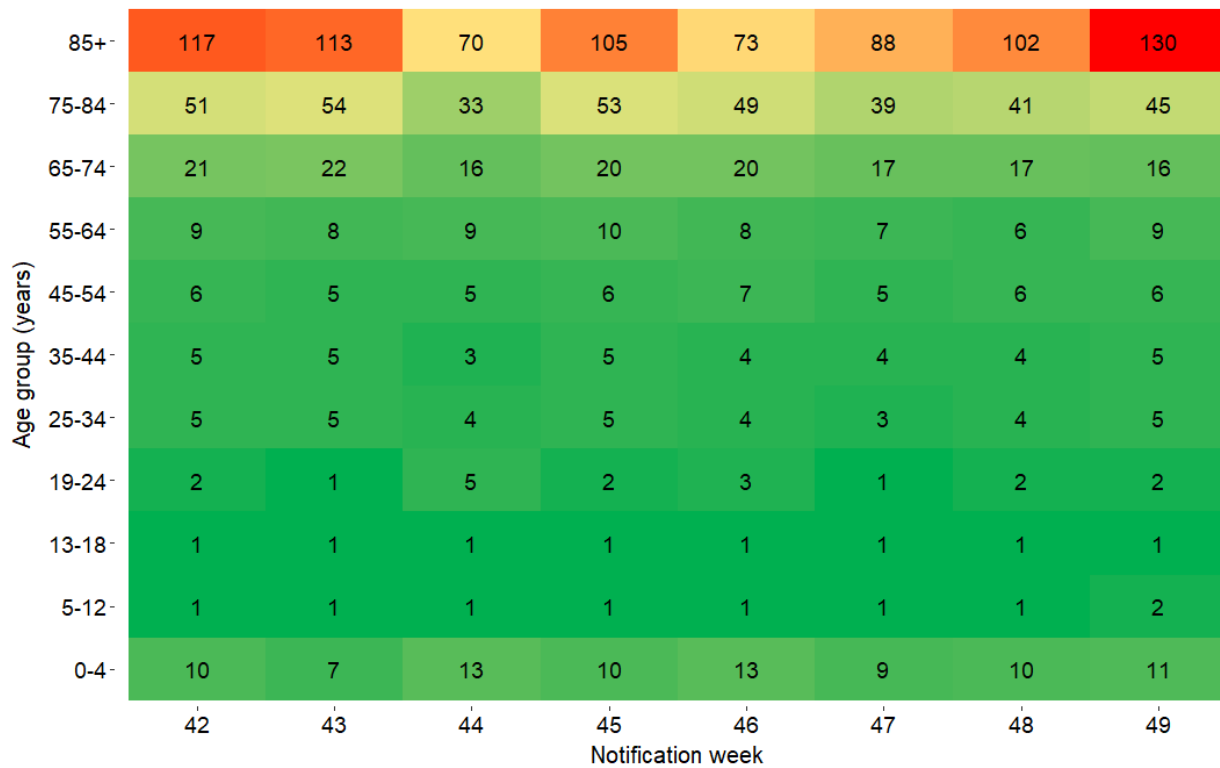


Figure 3: Heat map of weekly age-specific incidence rates of confirmed COVID-19 cases per 100,000 population in Ireland for the last 8 weeks

## Cases and incidence by county

**Table 3:** Characteristics of confirmed COVID-19 cases by county and descending incidence rate per 100,000 notified in Ireland, during week 49, 2023\*

County	Number of cases	Percent	Incidence rate per 100,000
Cavan	23	4.5	28.2
Waterford	34	6.7	26.7
Offaly	19	3.7	22.9
Wexford	29	5.7	17.7
Roscommon	11	2.2	15.7
Donegal	25	4.9	15.0
Kilkenny	15	2.9	14.4
Monaghan	9	1.8	13.8
Westmeath	13	2.6	13.5
Sligo	8	1.6	11.4
Louth	15	2.9	10.7
Kerry	15	2.9	9.6
Dublin	137	26.9	9.4
Tipperary	15	2.9	8.9
Laois	8	1.6	8.7
Cork	47	9.2	8.0
Mayo	10	2.0	7.2
Meath	15	2.9	6.8
Limerick	14	2.8	6.7
Longford	3	0.6	6.4
Kildare	15	2.9	6.1
Leitrim	2	0.4	5.7
Carlow	3	0.6	4.8
Wicklow	7	1.4	4.5
Galway	12	2.4	4.3
Clare	5	1.0	3.9

\* County data may not be accurately reflected in the most recent week due to ongoing data validations

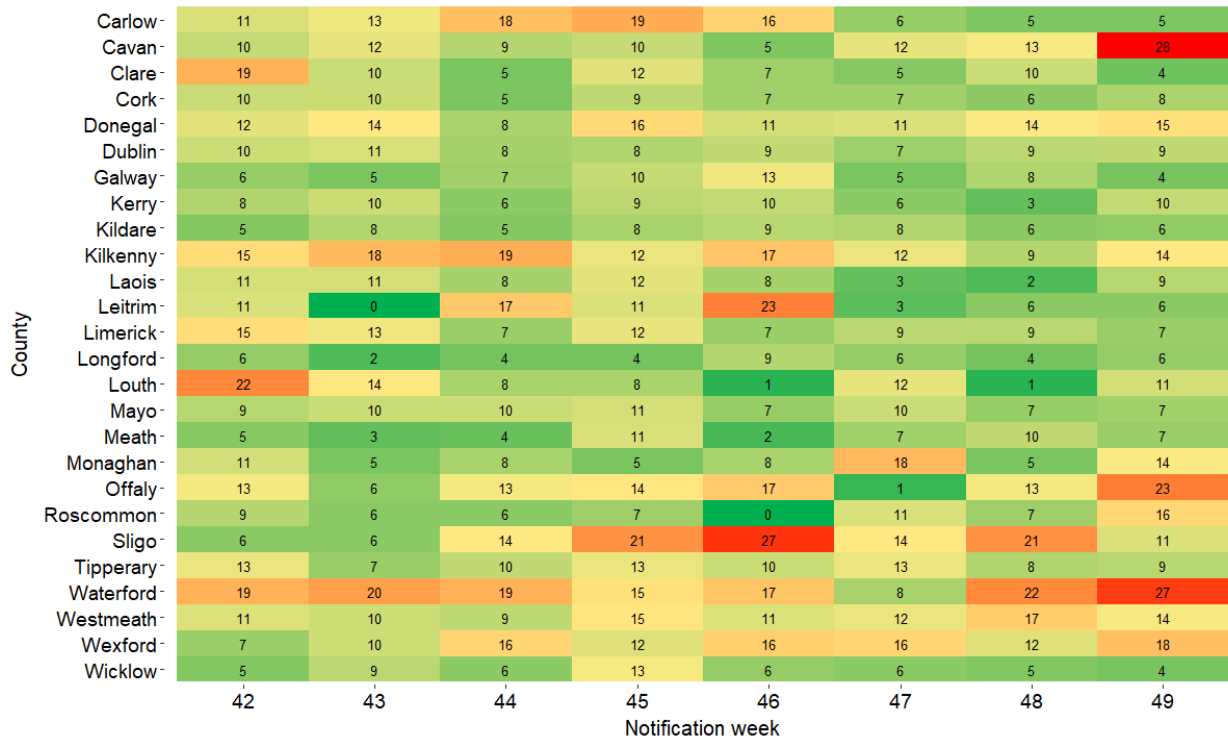


Figure 4: Heat map of weekly incidence rates of confirmed COVID-19 cases per 100,000 population, by county, notified in Ireland for the last 8 weeks



## Hospitalisations

A total of 243 hospitalised confirmed COVID-19 cases were recorded in the latest epidemiological week, week 49 2023.

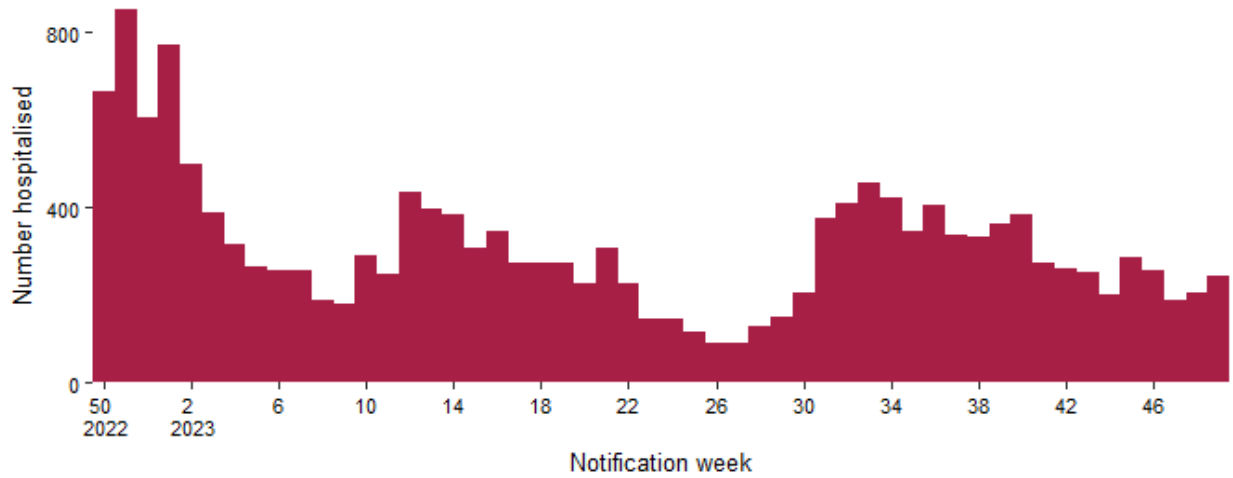


Figure 5: Hospitalisations among confirmed COVID-19 cases notified on CIDR in Ireland between week 50, 2022 and week 49, 2023

**Table 4:** Number of COVID-19 cases and hospital admissions by age group in Ireland for week<sup>2</sup> 49, 2023 based on week of notification<sup>3</sup>

Age group	Week 49, 2023			Total 2023		
	Total cases	Hospitalised cases		Total cases	Hospitalised cases	
	Number of cases	Number of cases	Percentage	Number of cases	Number of cases	Percentage
0-4	33	14	42.4	1,532	860	56.1
5-12	9	4	44.4	359	153	42.6
13-18	5	2	40.0	436	128	29.4
19-24	9	2	22.2	1,039	210	20.2
25-34	30	5	16.7	3,116	538	17.3
35-44	38	14	36.8	3,776	636	16.8
45-54	40	14	35.0	3,624	792	21.9
55-64	51	20	39.2	3,769	1,357	36.0
65-74	72	41	56.9	4,622	2,672	57.8
75-84	112	62	55.4	6,381	4,046	63.4
85+	110	65	59.1	4,592	2,790	60.8
Unknown	0	0	0.0	4	0	0.0

<sup>2</sup> Hospitalisations may be underestimated for recent weeks as the outcome may not yet have occurred or may not yet have been reported to CIDR

<sup>3</sup> Data are based on the date the case was notified on CIDR, and not the date of hospital admission

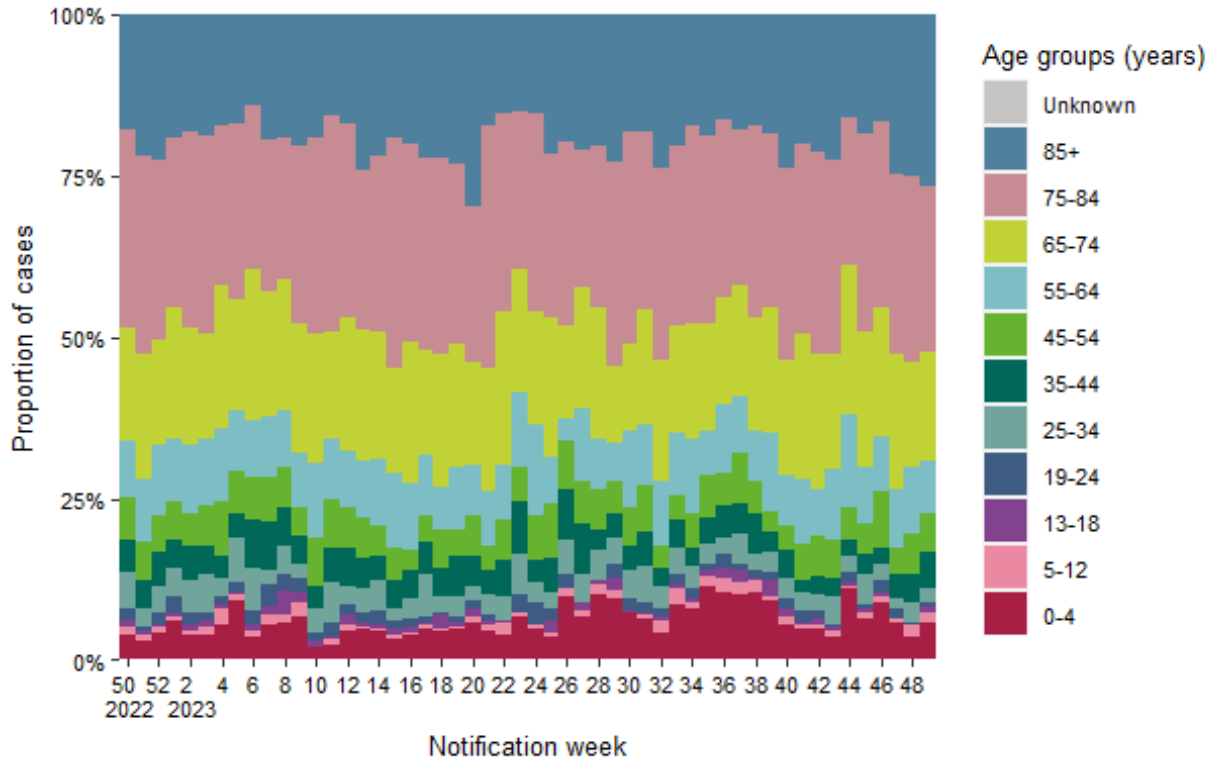


Figure 6: Age distribution of hospitalised confirmed COVID-19 cases notified on CIDR in Ireland between week 50, 2022 and week 49, 2023

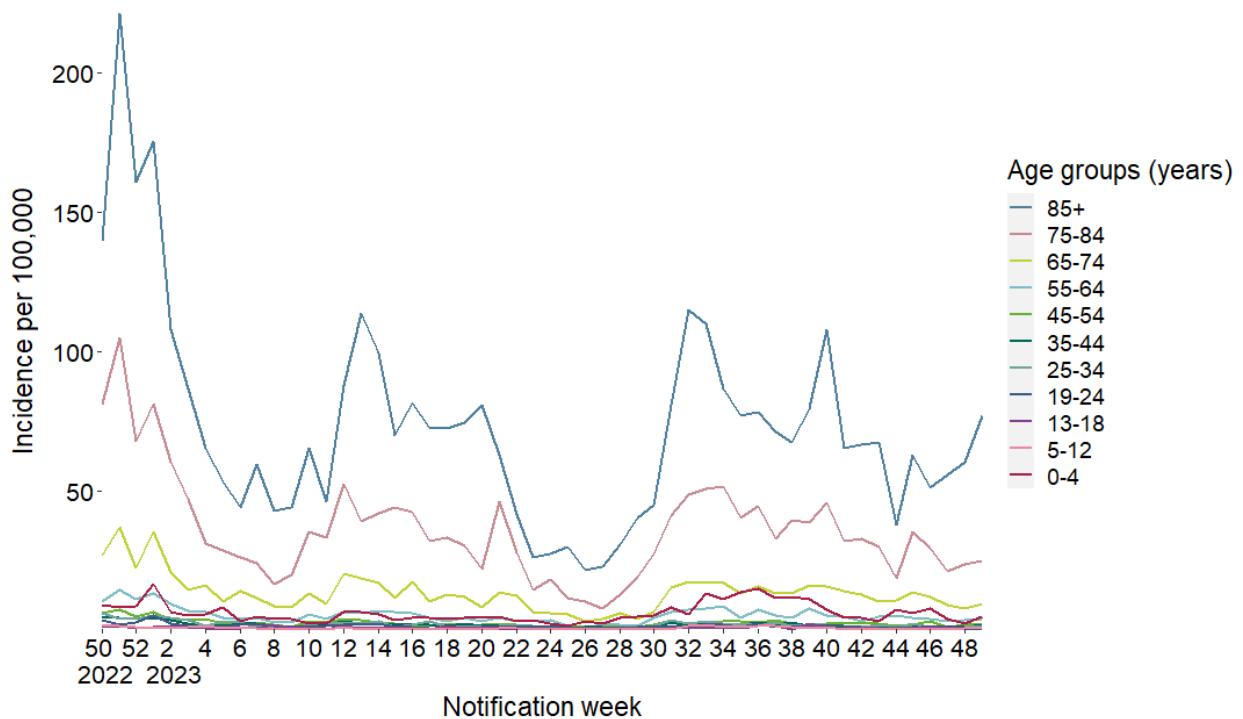


Figure 7: Incidence rate by age group of hospitalisations among confirmed COVID-19 cases on CIDR in Ireland between week 50, 2022 and week 49, 2023

## ICU admissions

A total of 1 COVID-19 cases were admitted to ICU in the latest epidemiological week<sup>3</sup>, week 49 2023.

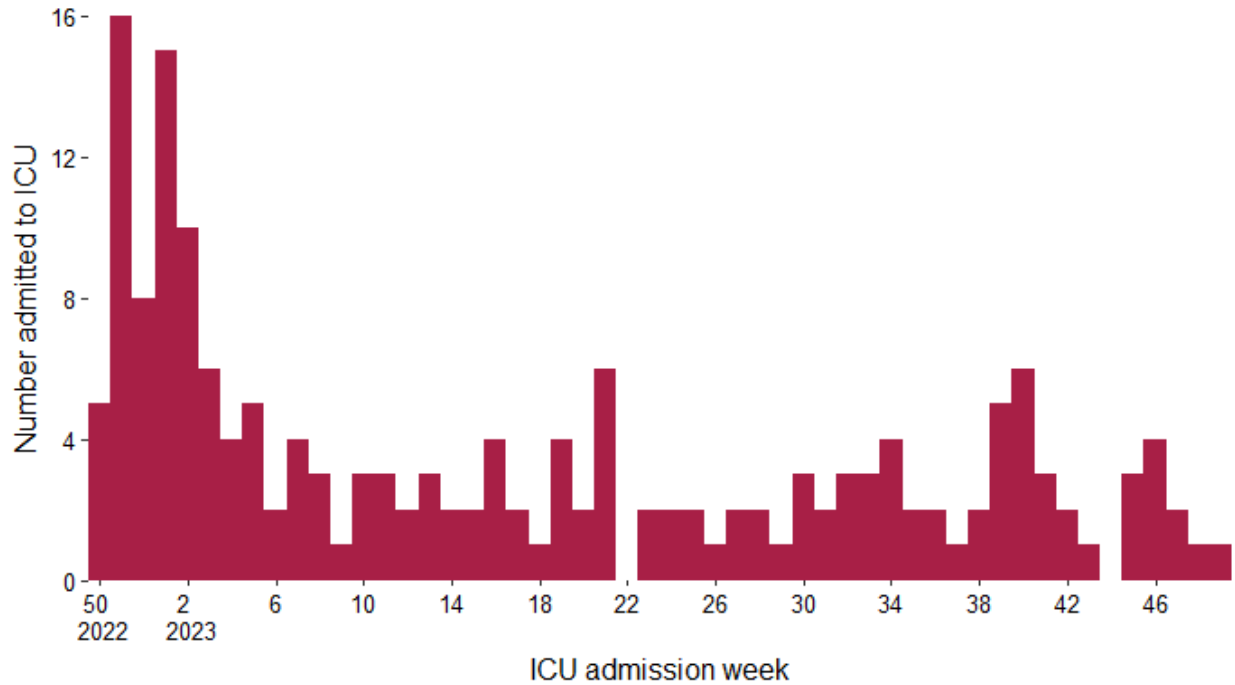


Figure 8: Number of COVID-19 ICU admissions in Ireland by week of ICU admission, between week 50, 2022 and week 49, 2023<sup>4</sup>

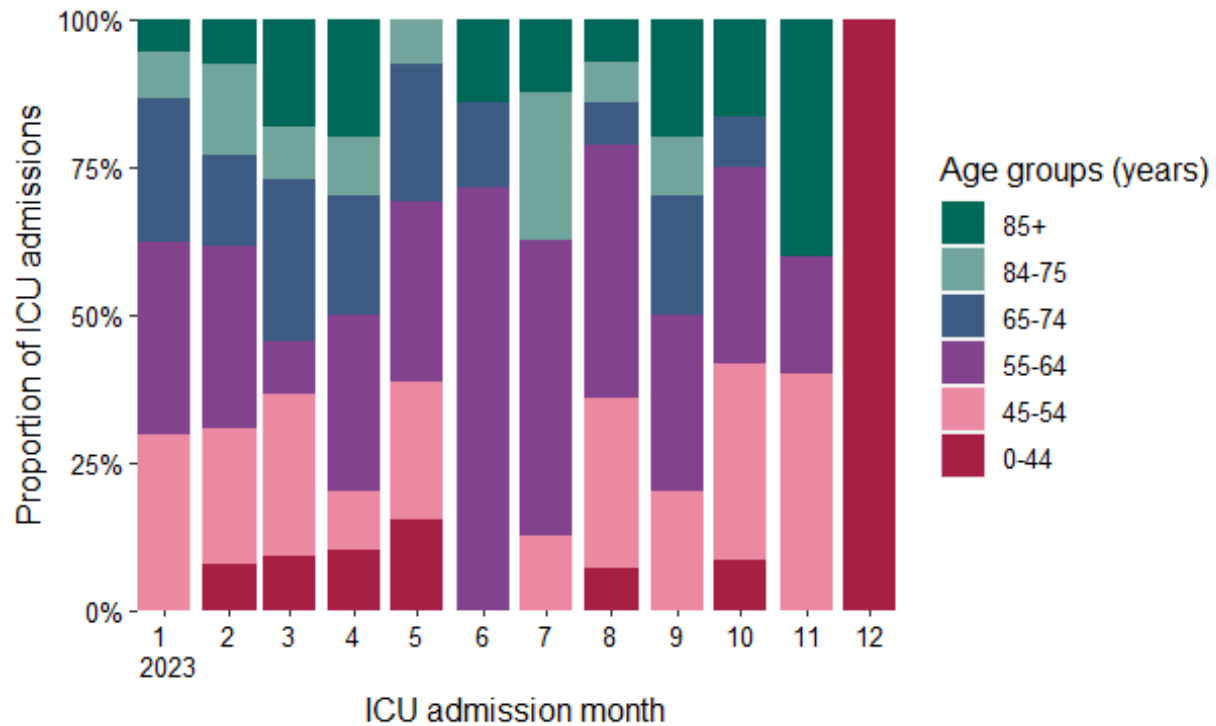


Figure 9: Age distribution of confirmed COVID-19 cases admitted to ICU by month of admission between January, 2022 and December, 2023

<sup>4</sup> Please note that most recent weeks may not yet reflect all admissions

## Deaths

Please note the below figures and tables include all cases (confirmed, probable and possible) who have died.

A total of 4 cases had a date of death in the latest epidemiological week, 49. The mean and median age of those who died in that week was 82 and 80.5 years respectively.

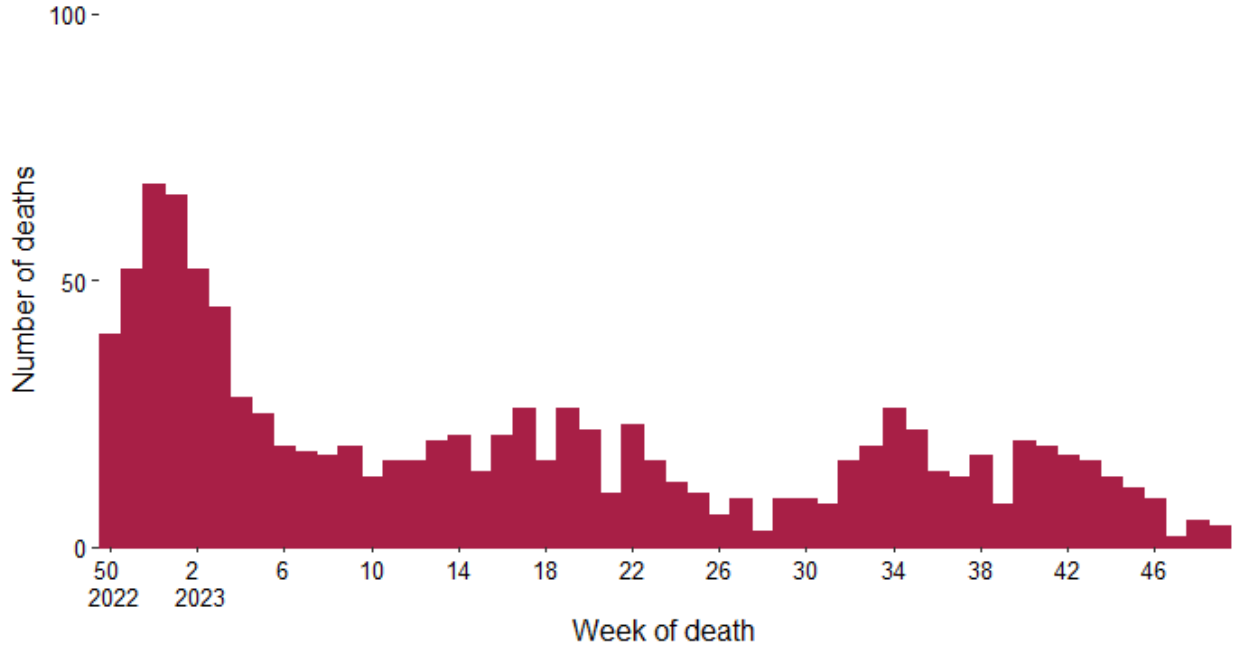


Figure 10: Total number of COVID-19 deaths notified by week of death, cases with a date of notification from week 50, 2022 to 49, 2023<sup>5</sup>. Date of death missing for 0 of the reported deaths

<sup>5</sup> Please note that most recent weeks may not yet reflect all deaths

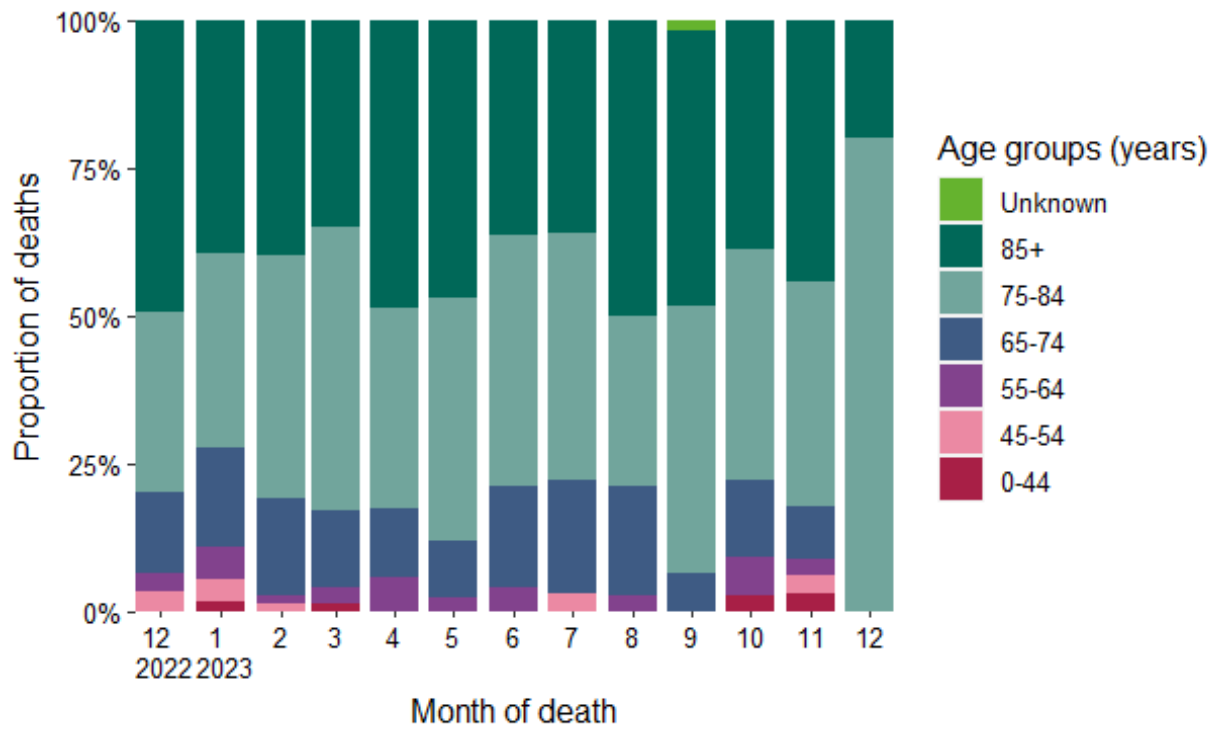


Figure 11: Age distribution of COVID-19 deaths notified on CIDR in Ireland between January, 2022 and December, 2023

## Laboratory data of SARS-CoV-2 PCR tests

In week 49, a total of 5,906 SARS-CoV-2 tests were performed, of which 593 (10%) were positive.

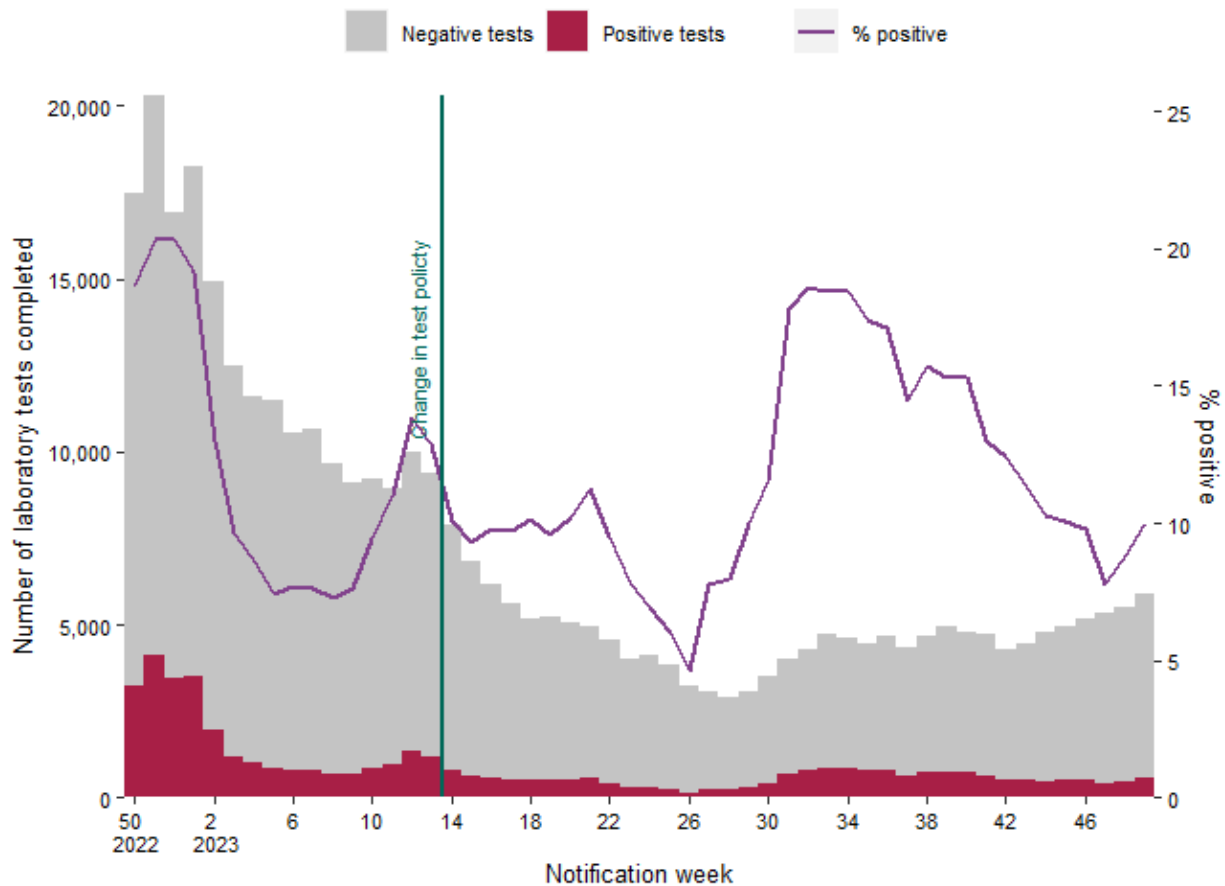


Figure 12: Number of completed laboratory tests by result and % positive tests<sup>6</sup> in Ireland between week 50, 2022 and week 49, 2023. Data source: Deloitte Ireland LLP<sup>7</sup>

<sup>6</sup> Positive tests refer to all positive specimens and includes duplicates and individuals who were retested.

<sup>7</sup> Since 30/03/2023 (week 13, 2023), community test centres closed and PCR testing was only performed based on clinical assessment.

## Notes

### Technical Notes

#### 1. Data Source

Data are based on statutory notifications and were extracted from Computerised Infectious Disease Reporting (CIDR) system and the HSE COVID care tracker. Data are provisional and subject to ongoing review, validation and update. As a result, figures in this report may differ from previously published figures. Slide with Laboratory testing for SARS-CoV-2 data provided by Deloitte Ireland LLP

#### 2. Epidemiological date

Epidemiological date is based on the earliest of dates available on the case and taken from date of onset of symptoms, date of diagnosis, laboratory specimen collection date, laboratory received date, laboratory reported date or event creation date/notification date on CIDR. By using this date rather than event creation/ notification date, adjusts for any delays in testing/notification. Further information on epidemiological dates and weeks can be found on the [HPSC website](#).

#### 3. Population data

Population data were taken from Census 2022. Data were aggregated into the following age groups for the analysis: 0-4 years, 5-12 years, 13-18 years, 19-24 years, 25-34 years, 35-44 years, 45-54 years, 55-64 years, 65-74 years, 75-84 years and  $\geq 85$  years.

### Acknowledgements

Sincere thanks are extended to all those who are participating in the collection of data and reporting of data used in these reports. This includes the HSE COVID-19 Contact Management Programme (CMP), staff in ICU units, notifying clinicians, laboratory staff, public health doctors, nurses, surveillance scientists, microbiologists and administrative staff.

### Please refer to the Health Protection Surveillance (HPSC) website for

- [Epidemiology of COVID-19 in Ireland infohub](#)
- [Outbreaks/clusters in Ireland COVID-19 weekly report](#)
- [SARS-CoV-2 wastewater surveillance programme weekly reports](#)
- [Virus variants in Ireland COVID-19 summary report](#)
- [Epidemiology of intensive care admissions in cases of COVID-19 in Ireland](#)