



Weekly report on the epidemiology of COVID-19 in Ireland

Week 40, 2023

- The epidemiological weeks in this report, run from Sunday to Saturday. Please refer to the [HPSC website](#) for a complete list of epidemiological weeks with start and end dates for 2020-2023.
- Data for this report are based on cases notified on the Computerised Infectious Disease Reporting (CIDR) up to midnight 07/10/2023. Data were extracted from CIDR system on 10/10/2023. Data are provisional and subject to ongoing review, validation and update. As a result, figures in this report may differ from previously published figures.
- Data should be interpreted in the context of the current testing policy. Testing policies can affect the number and age distribution of confirmed cases notified on CIDR. Information on the current testing policy in Ireland can be found [here](#)

Key points

Notified confirmed cases.

- In week 40 (between October 01 and October 07, 2023) there were 713 new confirmed COVID-19 cases reported on CIDR. This is stable (increase of 0.6%) compared to week 39 when there were 709 confirmed COVID-19 cases notified.
- The highest number of new confirmed COVID-19 cases in week 40 was in the age group of 75-84 years with 24.4% of notified cases in week 40.

Laboratory data of SARS-CoV-2 PCR tests

- In week 40, a total of 4,611 SARS-CoV-2 tests were performed, of which 716 (15.5%) were positive. This is stable compared to the previous week, 39, when 15.3% were positive.

Deaths

- Since the start of the pandemic 9,293 COVID-19 deaths among notified COVID-19 cases have been reported on CIDR. Of these, 3 had a date of death in week 40.

Table 1: Summary characteristics of COVID-19 cases notified in Ireland during week 40, 2023 and 2023 to date.

	Week 40, 2023		Total 2023	
	Number	Percentage	Number	Percentage
Total number of confirmed cases	713		28,777	
Incidence rate of confirmed cases per 100,000 population	15		604.3	
Severe cases				
Number of cases hospitalised	360*	50.49	11,984*	41.64
Number of cases admitted to ICU	1*	0.14	116*	0.40
Number of deaths among confirmed cases	0*	0.00	619*	2.15

* The number of cases hospitalised, cases admitted to ICU and deaths described in the above table relate only to COVID-19 cases who were notified during this reporting period, and where the outcome is known at the time of reporting. It does not reflect all hospitalisations, ICU admissions and deaths related to COVID-19 which occurred during the period covered by the report. It also does not reflect the final number of cases hospitalised, admitted to ICU or deaths for these cases notified during this period as the outcome may not yet have occurred, or is yet to be notified

Confirmed cases of COVID-19

Since the start of 2023, a total of 28,777 confirmed COVID-19 cases have been notified on CIDR. In the past week, week 40 2023, 713 confirmed COVID-19 cases were reported on CIDR. This is an increase of 0.6% compared to week 39 when 709 confirmed COVID-19 cases were notified. Figure 1 shows the epidemiological curve of COVID-19 cases notified in Ireland for the last one year to week 40 2023. Data since the start of the pandemic is available on the [Epidemiology of COVID-19 in Ireland infohub](#).

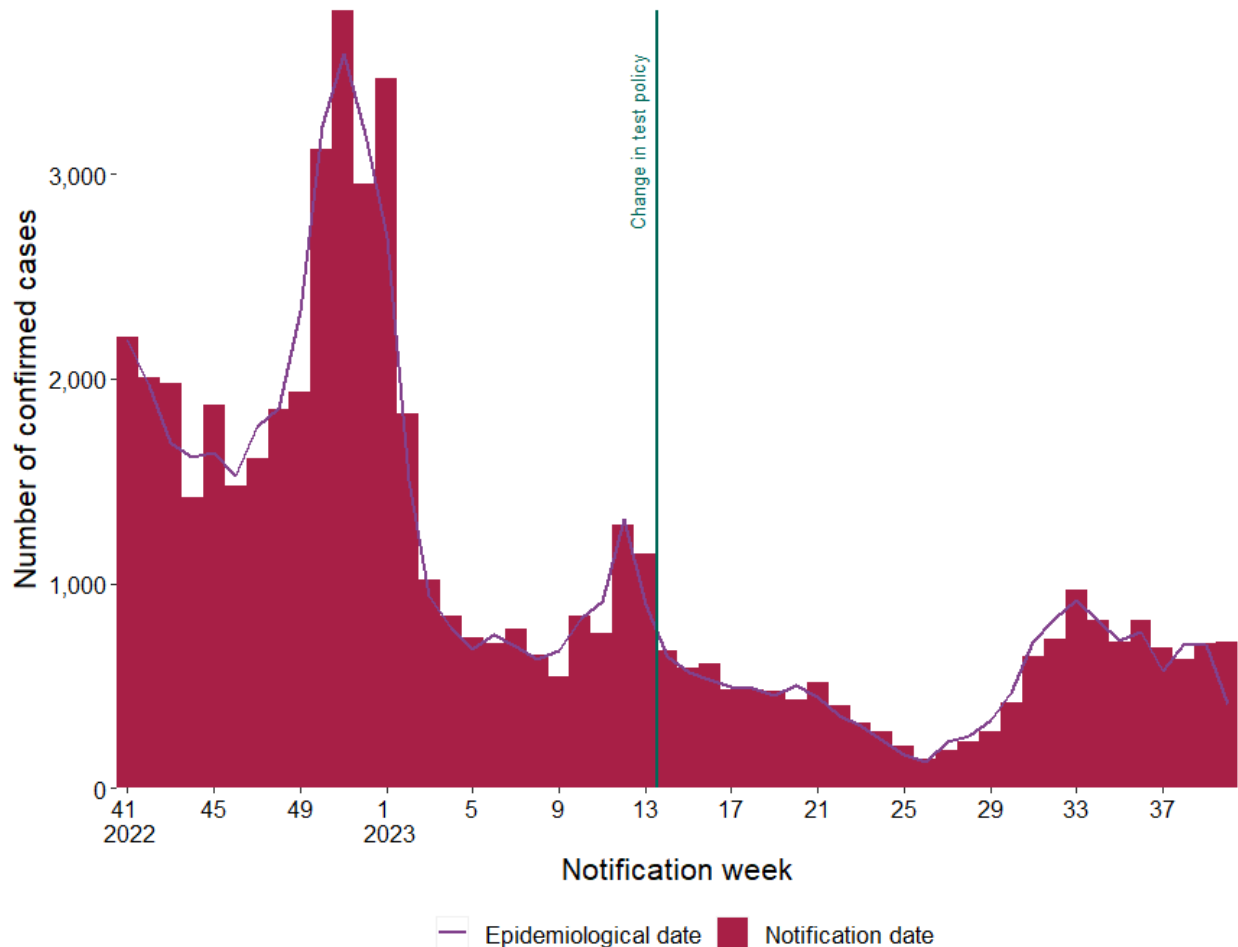


Figure 1a: Number of confirmed COVID-19 cases by notification week and epidemiological date in Ireland between week 41, 2022 and week 40, 2023. The red bars represent the number of confirmed cases by notification date. The purple line represents the number of cases by epidemiological date. The dark blue horizontal lines indicate a change in test policy¹

¹ Since 30/03/2023 (week 13, 2023), community test centres closed and PCR testing was only performed based on clinical assessment.

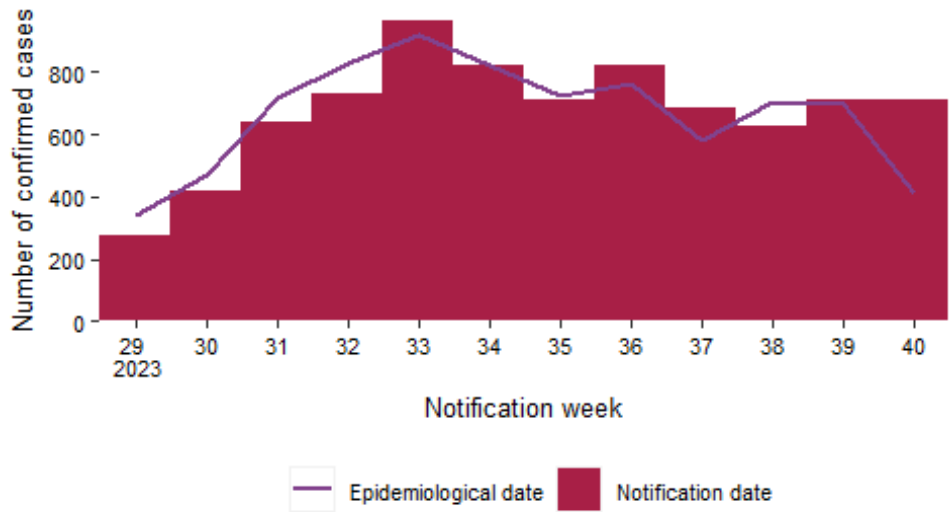
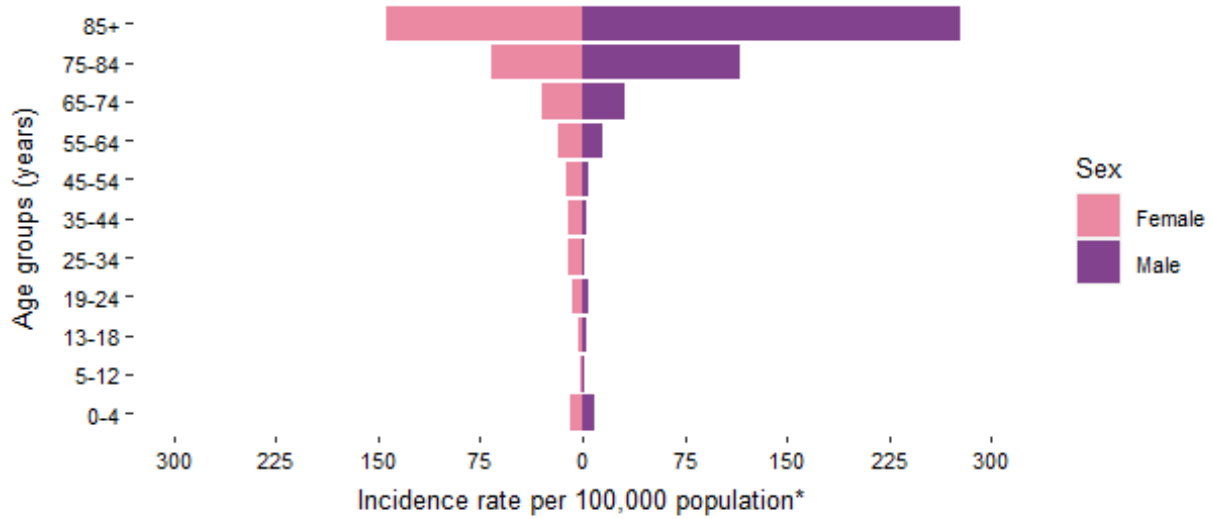


Figure 1b: Number of confirmed COVID-19 cases by notification week and epidemiological date in Ireland in the last 12 weeks. The red bars represent the number of confirmed cases by notification date. The purple line represents the number of cases by epidemiological date.

Confirmed COVID-19 cases by age and sex

Table 2: Summary characteristics by age and sex of COVID-19 cases notified in Ireland during week 40, 2023 and 2023 to date

	Week 40, 2023		Total 2023	
	Number	Percentage	Number	Percentage
Gender				
Males	329	46.1	12,390	43.1
Females	384	53.9	16,382	56.9
M:F ratio	0.86		0.76	
Age (years)				
Mean age	63		57	
Median age	71		60	
Age range	0 - 100		0 - 103	
Age groups (years)				
0-4	30	4.2	1,255	4.4
5-12	11	1.5	311	1.1
13-18	9	1.3	394	1.4
19-24	21	2.9	956	3.3
25-34	43	6.0	2,850	9.9
35-44	53	7.4	3,452	12.0
45-54	49	6.9	3,256	11.3
55-64	81	11.4	3,332	11.6
65-74	113	15.8	3,851	13.4
75-84	174	24.4	5,309	18.4
85+	128	18.0	3,807	13.2
Unknown	1	0.1	4	0.0



*Excluding 1 for whom age is unknown, 0 for whom sex is unknown and 0 for whom both are unknown

Figure 2: Age and sex specific incidence rates of confirmed COVID-19 cases per 100,000 population for current week 40, 2023

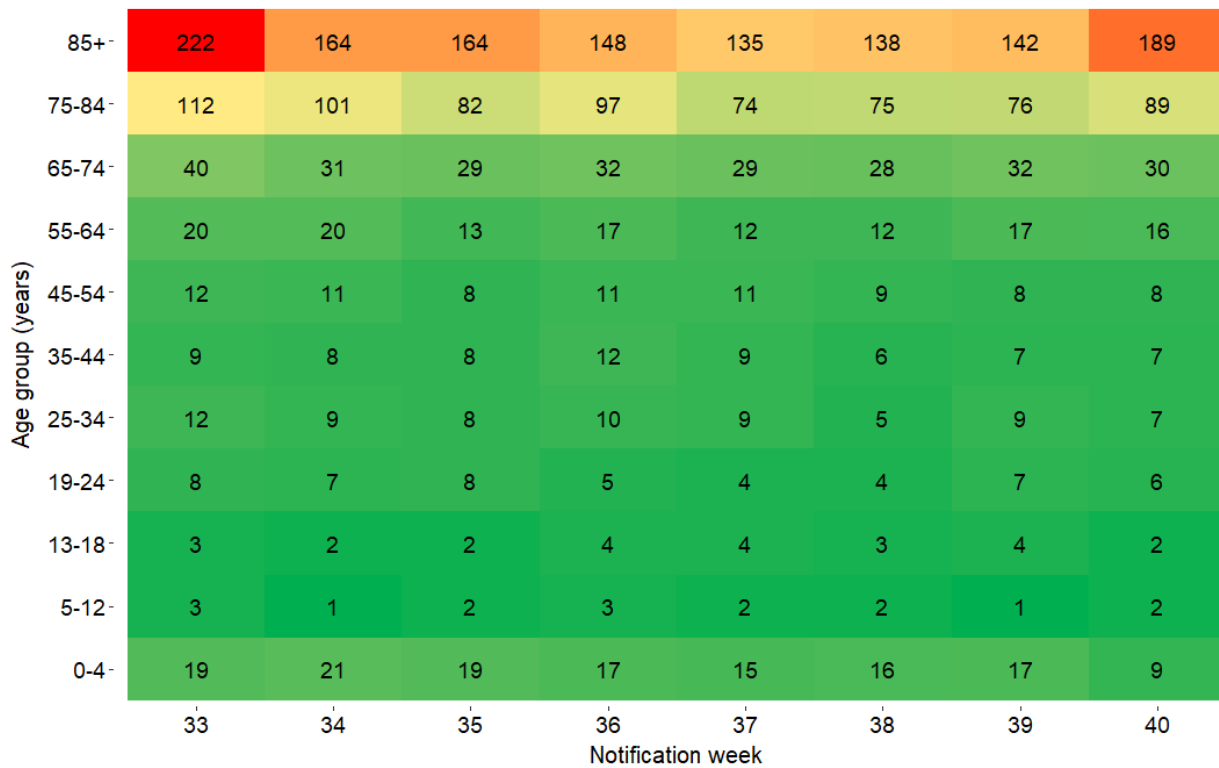


Figure 3: Heat map of weekly age-specific incidence rates of confirmed COVID-19 cases per 100,000 population in Ireland for the last 8 weeks

Cases and incidence by county

Table 3: Characteristics of confirmed COVID-19 cases by county and descending incidence rate per 100,000 notified in Ireland, during week 40, 2023*

County	Number of cases	Percent	Incidence rate per 100,000
Waterford	47	6.6	40.5
Sligo	18	2.5	27.5
Limerick	49	6.9	25.1
Cavan	17	2.4	22.3
Donegal	34	4.8	21.4
Carlow	12	1.7	21.1
Kerry	30	4.2	20.3
Kilkenny	20	2.8	20.2
Offaly	15	2.1	19.2
Cork	94	13.2	17.3
Leitrim	5	0.7	15.6
Kildare	33	4.6	14.8
Dublin	189	26.5	14.0
Mayo	18	2.5	13.8
Tipperary	22	3.1	13.8
Westmeath	12	1.7	13.5
Wexford	18	2.5	12.0
Clare	12	1.7	10.1
Louth	13	1.8	10.1
Galway	22	3.1	8.5
Laois	7	1.0	8.3
Roscommon	5	0.7	7.7
Monaghan	4	0.6	6.5
Wicklow	8	1.1	5.6
Longford	2	0.3	4.9
Meath	7	1.0	3.6

* County data may not be accurately reflected in the most recent week due to ongoing data validations

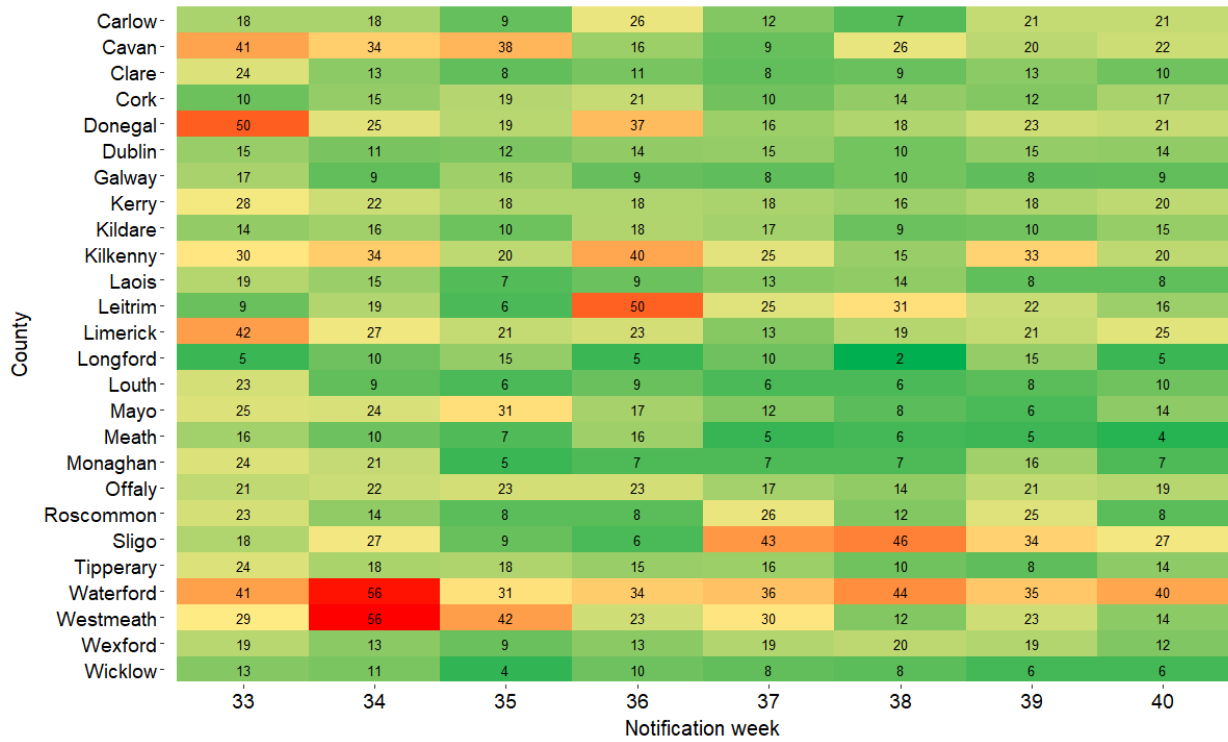


Figure 4: Heat map of weekly incidence rates of confirmed COVID-19 cases per 100,000 population, by county, notified in Ireland for the last 8 weeks

Hospitalisations

A total of 360 hospitalised confirmed COVID-19 cases were recorded in the latest epidemiological week, week 40 2023.

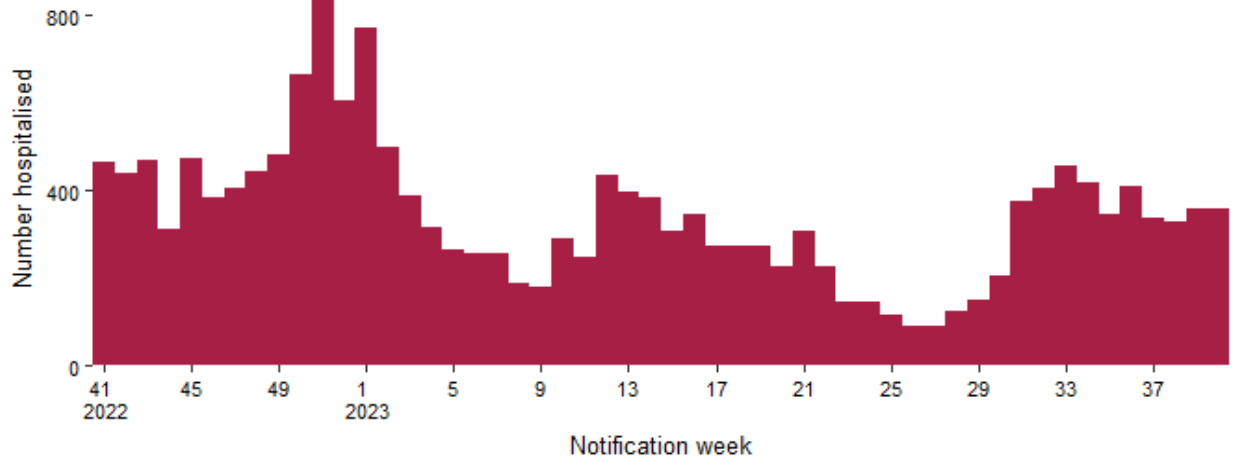


Figure 5: Hospitalisations among confirmed COVID-19 cases notified on CIDR in Ireland between week 41, 2022 and week 40, 2023

Table 4: Number of COVID-19 cases and hospital admissions by age group in Ireland for week² 40, 2023 based on week of notification³

Age group	Week 40, 2023			Total 2023		
	Total cases	Hospitalised cases		Total cases	Hospitalised cases	
	Number of cases	Number of cases	Percentage	Number of cases	Number of cases	Percentage
0-4	30	21	70.0	1,255	727	57.9
5-12	11	4	36.4	311	132	42.4
13-18	9	5	55.6	394	115	29.2
19-24	21	5	23.8	956	183	19.1
25-34	43	10	23.3	2,850	470	16.5
35-44	53	15	28.3	3,452	567	16.4
45-54	49	14	28.6	3,256	665	20.4
55-64	81	30	37.0	3,332	1,151	34.5
65-74	113	65	57.5	3,851	2,234	58.0
75-84	174	109	62.6	5,309	3,418	64.4
85+	128	82	64.1	3,807	2,322	61.0
Unknown	1	0	0.0	4	0	0.0

² Hospitalisations may be underestimated for recent weeks as the outcome may not yet have occurred or may not yet have been reported to CIDR

³ Data are based on the date the case was notified on CIDR, and not the date of hospital admission

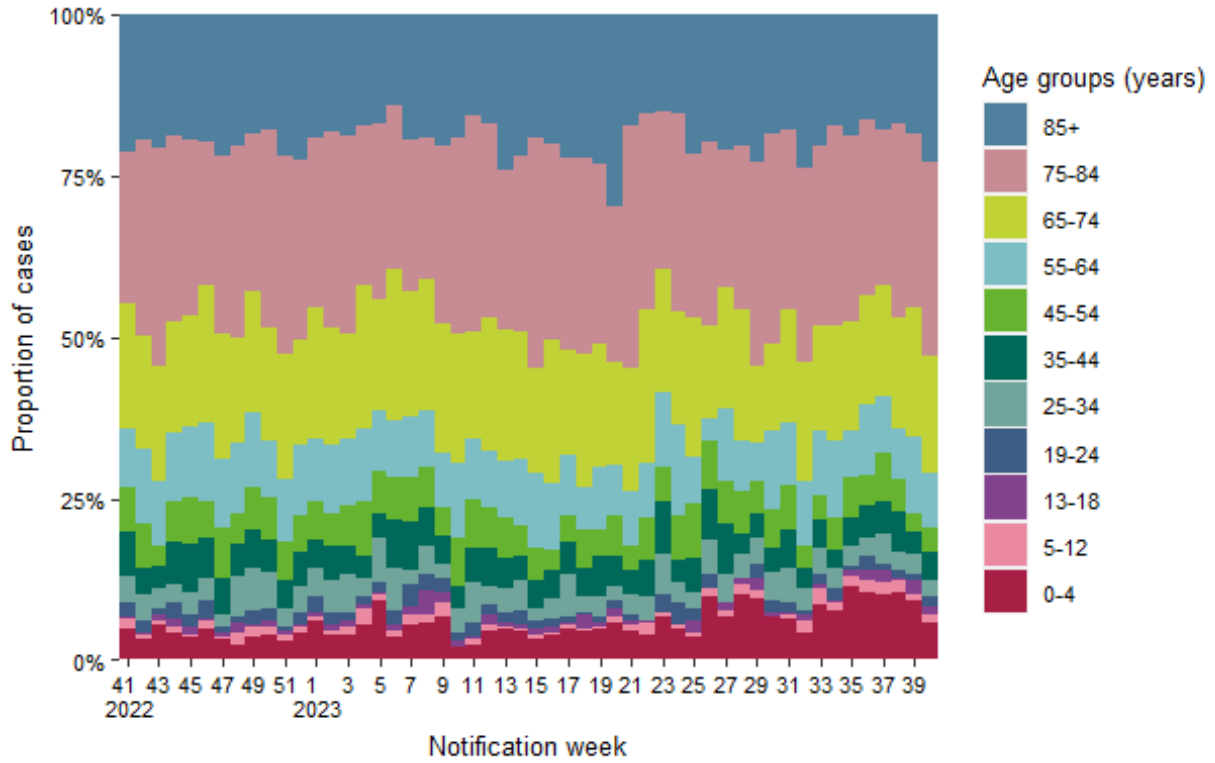


Figure 6: Age distribution of hospitalised confirmed COVID-19 cases notified on CIDR in Ireland between week 41, 2022 and week 40, 2023

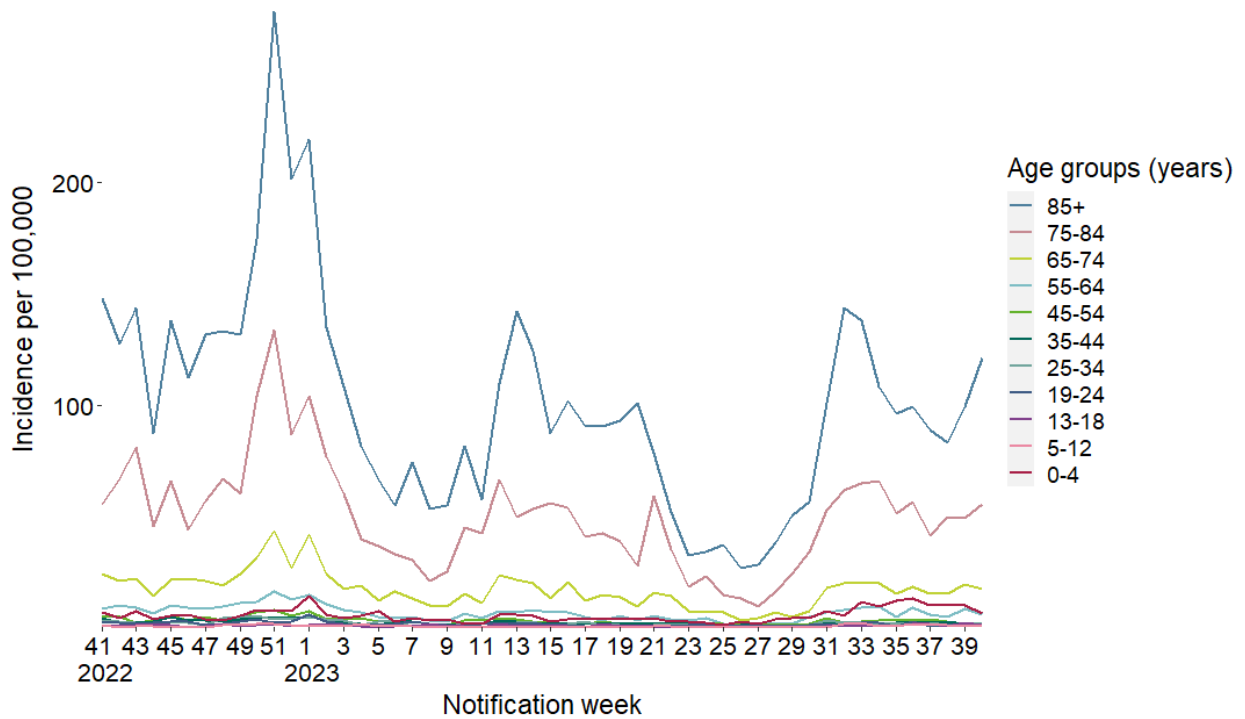


Figure 7: Incidence rate by age group of hospitalisations among confirmed COVID-19 cases on CIDR in Ireland between week 41, 2022 and week 40, 2023

ICU admissions

A total of 1 COVID-19 cases were admitted to ICU in the latest epidemiological week³, week 40 2023.

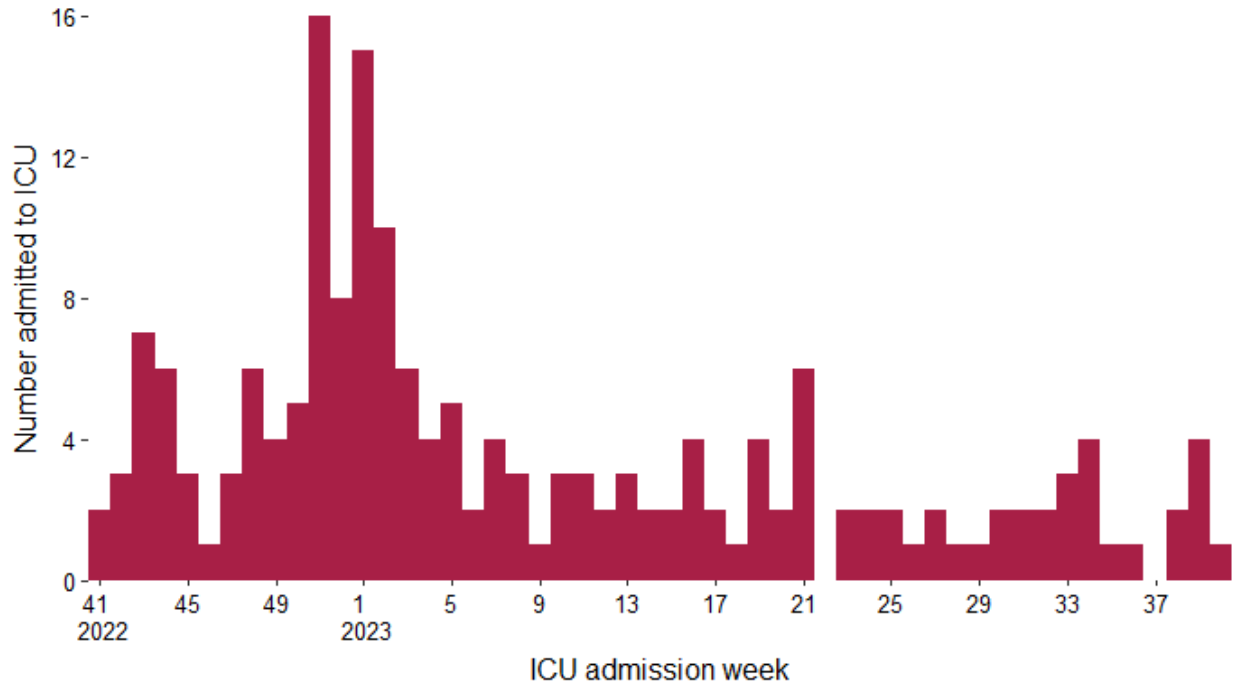


Figure 8: Number of COVID-19 ICU admissions in Ireland by week of ICU admission, between week 41, 2022 and week 40, 2023⁴

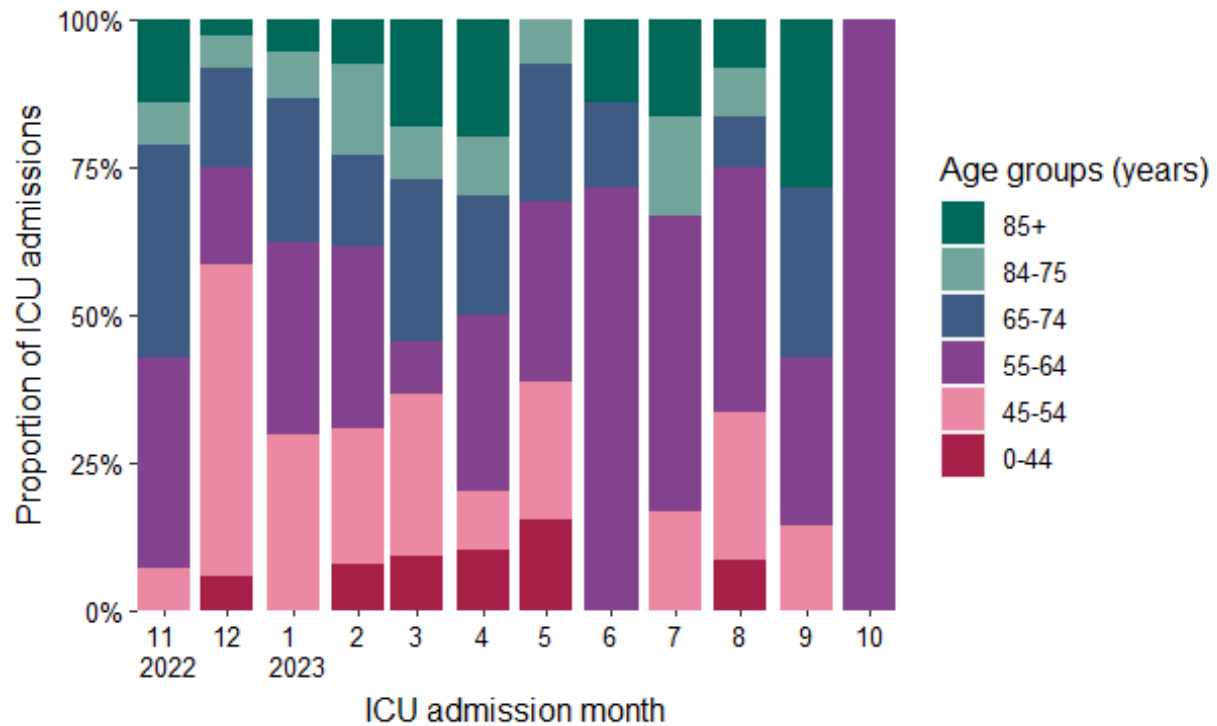


Figure 9: Age distribution of confirmed COVID-19 cases admitted to ICU by month of admission between November, 2022 and October, 2023

⁴ Please note that most recent weeks may not yet reflect all admissions

Deaths

Please note the below figures and tables include all cases (confirmed, probable and possible) who have died.

A total of 3 cases had a date of death in the latest epidemiological week, 40. The mean and median age of those who died in that week was 78 and 77 years respectively.

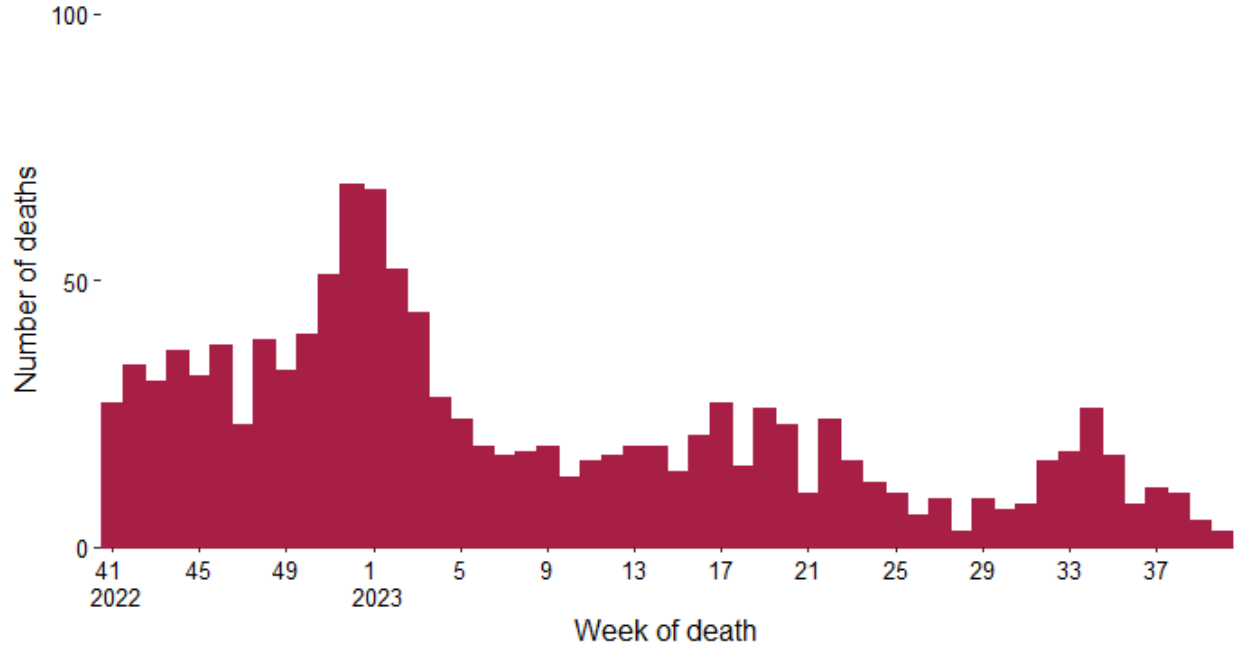


Figure 10: Total number of COVID-19 deaths notified by week of death, cases with a date of notification from week 41, 2022 to 40, 2023⁵. Date of death missing for 0 of the reported deaths

⁵ Please note that most recent weeks may not yet reflect all deaths

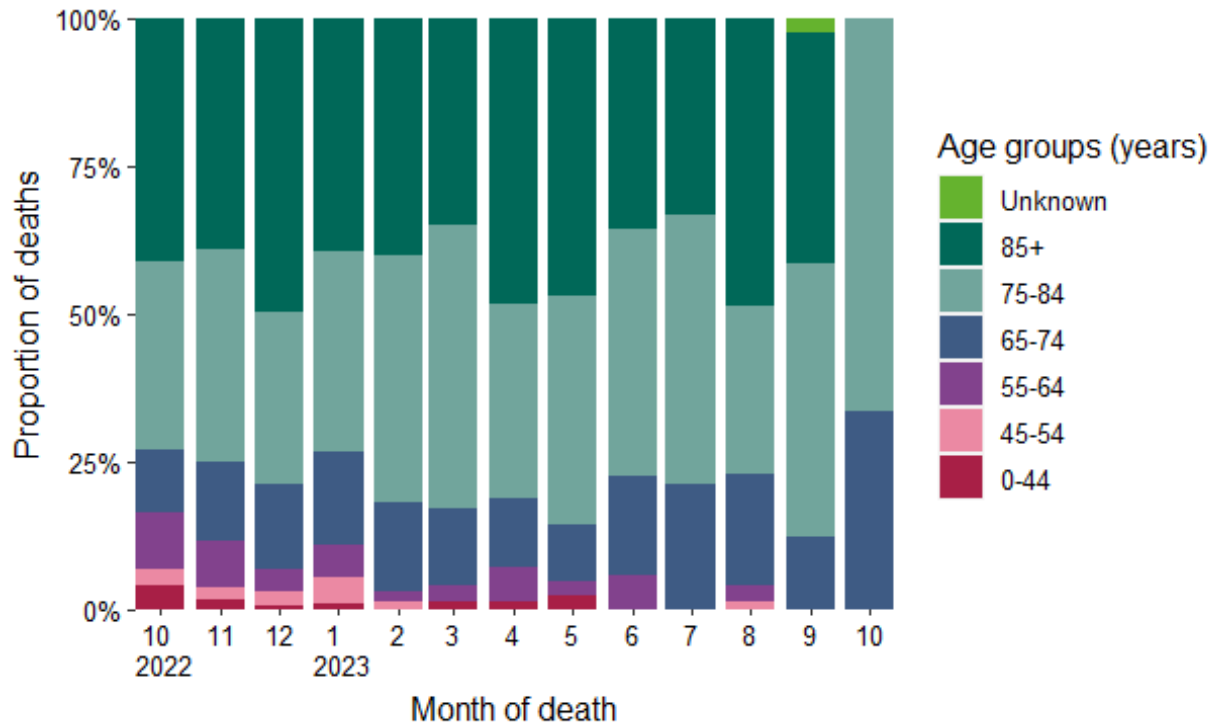


Figure 11: Age distribution of COVID-19 deaths notified on CIDR in Ireland between November, 2022 and October, 2023

Laboratory data of SARS-CoV-2 PCR tests

In week 40, a total of 4,611 SARS-CoV-2 tests were performed, of which 716 (15.5%) were positive.

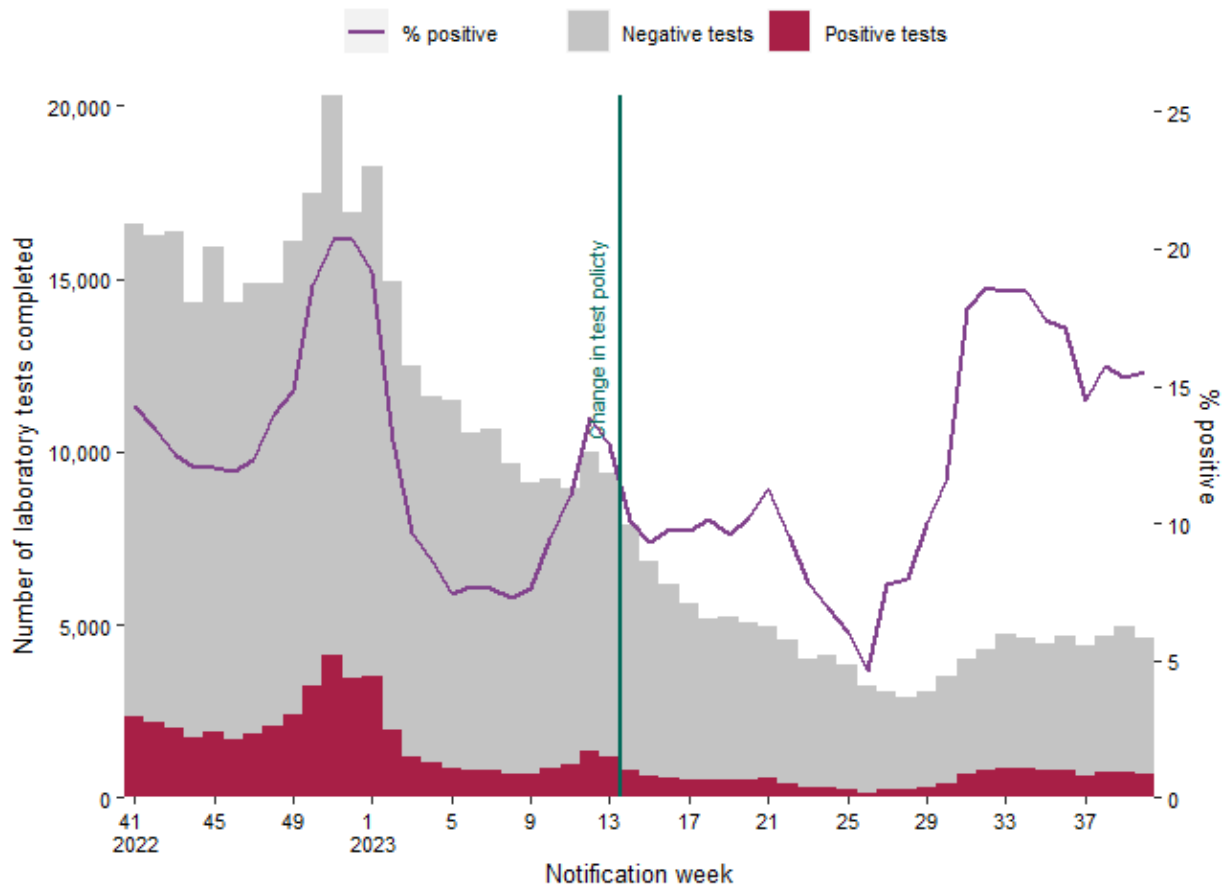


Figure 12: Number of completed laboratory tests by result and % positive tests⁶ in Ireland between week 41, 2022 and week 40, 2023. Data source: Deloitte Ireland LLP⁷

⁶ Positive tests refer to all positive specimens and includes duplicates and individuals who were retested.

⁷ Since 30/03/2023 (week 13, 2023), community test centres closed and PCR testing was only performed based on clinical assessment.

Notes

Technical Notes

1. Data Source

Data are based on statutory notifications and were extracted from Computerised Infectious Disease Reporting (CIDR) system and the HSE COVID care tracker. Data are provisional and subject to ongoing review, validation and update. As a result, figures in this report may differ from previously published figures. Slide with Laboratory testing for SARS-CoV-2 data provided by Deloitte Ireland LLP

2. Epidemiological date

Epidemiological date is based on the earliest of dates available on the case and taken from date of onset of symptoms, date of diagnosis, laboratory specimen collection date, laboratory received date, laboratory reported date or event creation date/notification date on CIDR. By using this date rather than event creation/ notification date, adjusts for any delays in testing/notification. Further information on epidemiological dates and weeks can be found on the [HPSC website](#).

3. Population data

Population data were taken from Census 2016. Data were aggregated into the following age groups for the analysis: 0-4 years, 5-12 years, 13-18 years, 19-24 years, 25-34 years, 35-44 years, 45-54 years, 55-64 years, 65-74 years, 75-84 years and ≥ 85 years.

Acknowledgements

Sincere thanks are extended to all those who are participating in the collection of data and reporting of data used in these reports. This includes the HSE COVID-19 Contact Management Programme (CMP), staff in ICU units, notifying clinicians, laboratory staff, public health doctors, nurses, surveillance scientists, microbiologists and administrative staff.

Please refer to the Health Protection Surveillance (HPSC) website for

- [Epidemiology of COVID-19 in Ireland infohub](#)
- [Outbreaks/clusters in Ireland COVID-19 weekly report](#)
- [Monthly report on COVID-19 deaths reported in Ireland](#)
- [SARS-CoV-2 wastewater surveillance programme weekly reports](#)
- [Virus variants in Ireland COVID-19 summary report](#)
- [Epidemiology of intensive care admissions in cases of COVID-19 in Ireland](#)