



# Weekly report on the epidemiology of COVID-19 in Ireland

## Week 39, 2023

- The epidemiological weeks in this report, run from Sunday to Saturday. Please refer to the [HPSC website](#) for a complete list of epidemiological weeks with start and end dates for 2020-2023.
- Data for this report are based on cases notified on the Computerised Infectious Disease Reporting (CIDR) up to midnight 30/09/2023. Data were extracted from CIDR system on 03/10/2023. Data are provisional and subject to ongoing review, validation and update. As a result, figures in this report may differ from previously published figures.
- Data should be interpreted in the context of the current testing policy. Testing policies can affect the number and age distribution of confirmed cases notified on CIDR. Information on the current testing policy in Ireland can be found [here](#)

## Key points

### Notified confirmed cases

- In week 39 (between September 24 and September 30 2023) there were 710 new confirmed COVID-19 cases reported on CIDR. This is an increase of 12.3% compared to week 38 when there were 632 confirmed COVID-19 cases notified.
- The highest number of new confirmed COVID-19 cases in week 39 was in the age group of 75-84 years with 21% of notified cases in week 39.

### Laboratory data of SARS-CoV-2 PCR tests

- In week 39, a total of 4,501 SARS-CoV-2 tests were performed, of which 700 (15.6%) were positive. This is stable compared to the previous week, 38, when 15.9% were positive.

### Deaths

- Since the start of the pandemic 9,262 COVID-19 deaths among notified COVID-19 cases have been reported on CIDR. Of these, 1 had a date of death in week 39.

**Table 1:** Summary characteristics of COVID-19 cases notified in Ireland during week 39, 2023 and 2023 to date

	Week 39, 2023		Total 2023	
	Number	Percentage	Number	Percentage
Total number of confirmed cases	710		28,099	
Incidence rate of confirmed cases per 100,000 population	14.9		590.1	
<b>Severe cases</b>				
Number of cases hospitalised	341*	48.03	11,627*	41.38
Number of cases admitted to ICU	3*	0.42	113*	0.40
Number of deaths among confirmed cases	2*	0.28	595*	2.12

\* The number of cases hospitalised, cases admitted to ICU and deaths described in the above table relate only to COVID-19 cases who were notified during this reporting period, and where the outcome is known at the time of reporting. It does not reflect all hospitalisations, ICU admissions and deaths related to COVID-19 which occurred during the period covered by the report. It also does not reflect the final number of cases hospitalised, admitted to ICU or deaths for these cases notified during this period as the outcome may not yet have occurred, or is yet to be notified

## Confirmed cases of COVID-19

Since the start of 2023, a total of 28,099 confirmed COVID-19 cases have been notified on CIDR. In the past week, week 39 2023, 710 confirmed COVID-19 cases were reported on CIDR. This is an increase of 12.3% compared to week 38 when 632 confirmed COVID-19 cases were notified. Figure 1 shows the epidemiological curve of COVID-19 cases notified in Ireland for the last one year to week 39 2023. Data since the start of the pandemic is available on the [Epidemiology of COVID-19 in Ireland infohub](#).

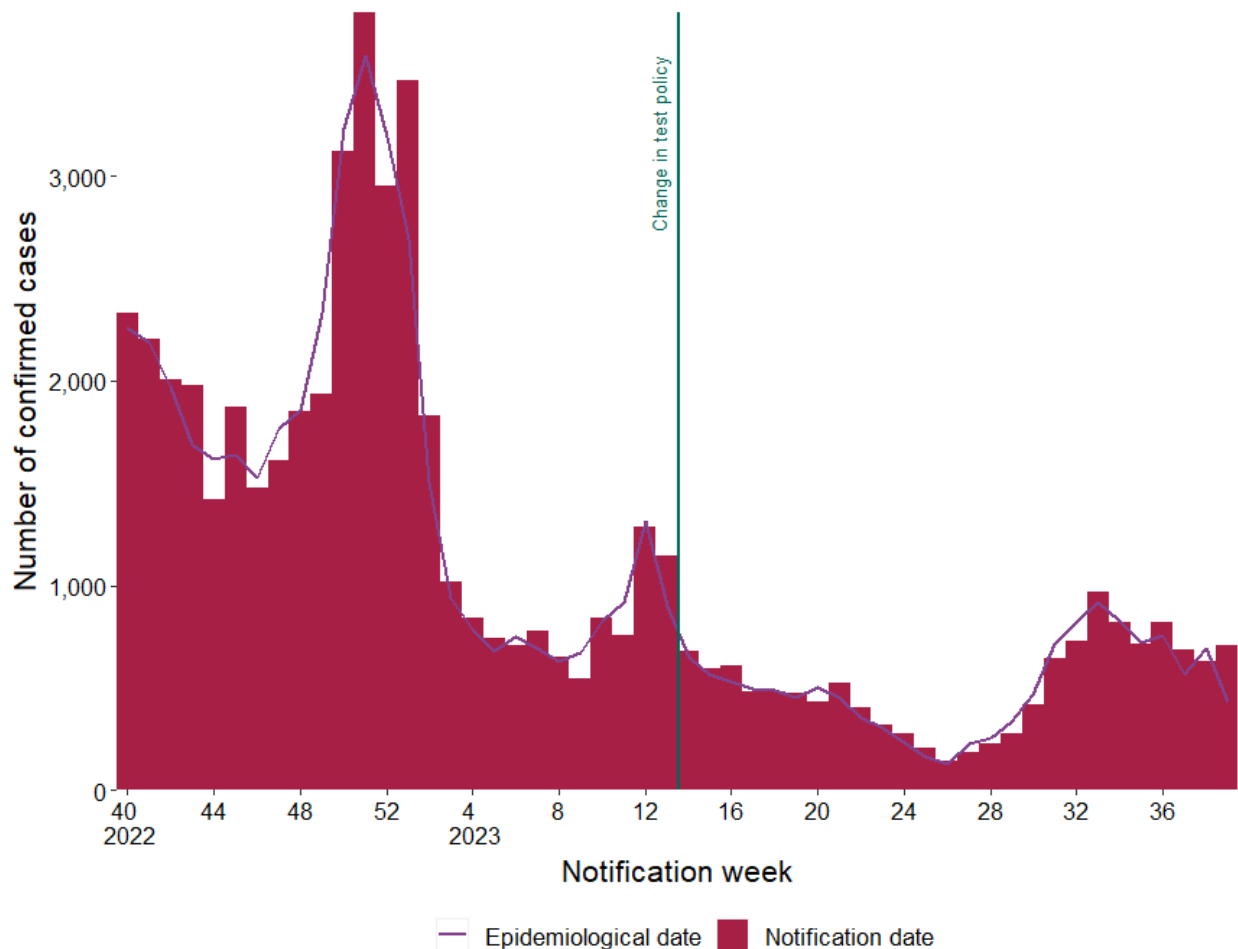


Figure 1a: Number of confirmed COVID-19 cases by notification week and epidemiological date in Ireland between week 40, 2022 and week 39, 2023. The red bars represent the number of confirmed cases by notification date. The purple line represents the number of cases by epidemiological date. The dark blue horizontal lines indicate a change in test policy<sup>1</sup>

<sup>1</sup> Since 30/03/2023 (week 13, 2023), community test centres closed and PCR testing was only performed based on clinical assessment.

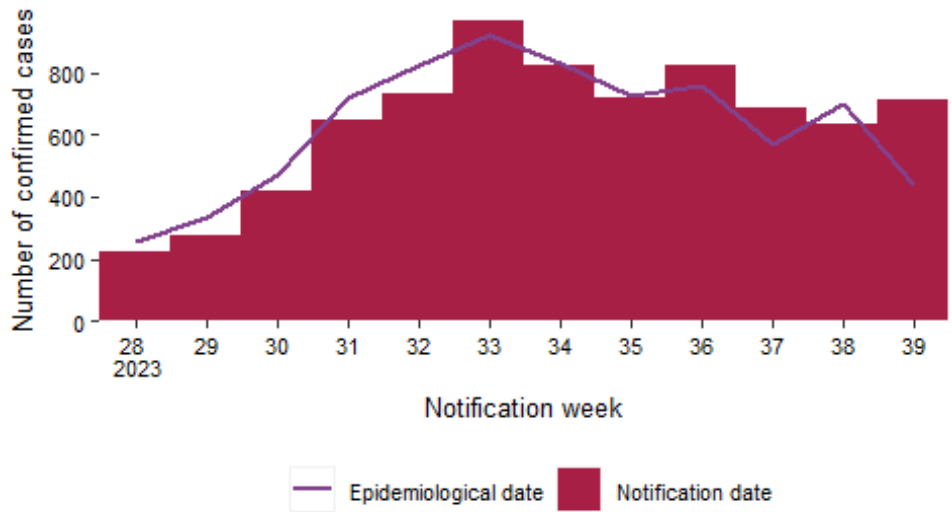
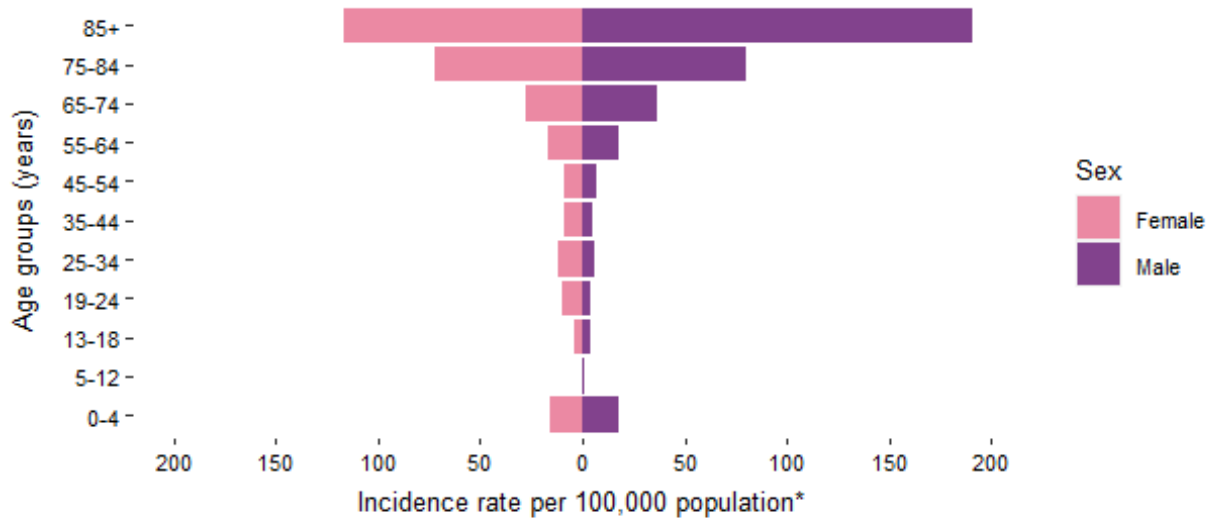


Figure 1b: Number of confirmed COVID-19 cases by notification week and epidemiological date in Ireland in the last 12 weeks. The red bars represent the number of confirmed cases by notification date. The purple line represents the number of cases by epidemiological date.

## Confirmed COVID-19 cases by age and sex

**Table 2:** Summary characteristics by age and sex of COVID-19 cases notified in Ireland during week 39, 2023 and 2023 to date

	Week 39, 2023		Total 2023	
	Number	Percentage	Number	Percentage
<b>Gender</b>				
Males	335	47.2	12,080	43.0
Females	374	52.7	16,014	57.0
M:F ratio	0.9		0.75	
<b>Age (years)</b>				
Mean age	58		57	
Median age	66		60	
Age range	0 - 102		0 - 103	
<b>Age groups (years)</b>				
0-4	56	7.9	1,225	4.4
5-12	3	0.4	300	1.1
13-18	15	2.1	385	1.4
19-24	23	3.2	935	3.3
25-34	59	8.3	2,807	10.0
35-44	54	7.6	3,402	12.1
45-54	48	6.8	3,209	11.4
55-64	88	12.4	3,251	11.6
65-74	119	16.8	3,751	13.3
75-84	149	21.0	5,148	18.3
85+	96	13.5	3,682	13.1
Unknown	NA	0.0	4	0.0



\*Excluding 0 for whom age is unknown, 1 for whom sex is unknown and 0 for whom both are unknown

Figure 2: Age and sex specific incidence rates of confirmed COVID-19 cases per 100,000 population for current week 39, 2023

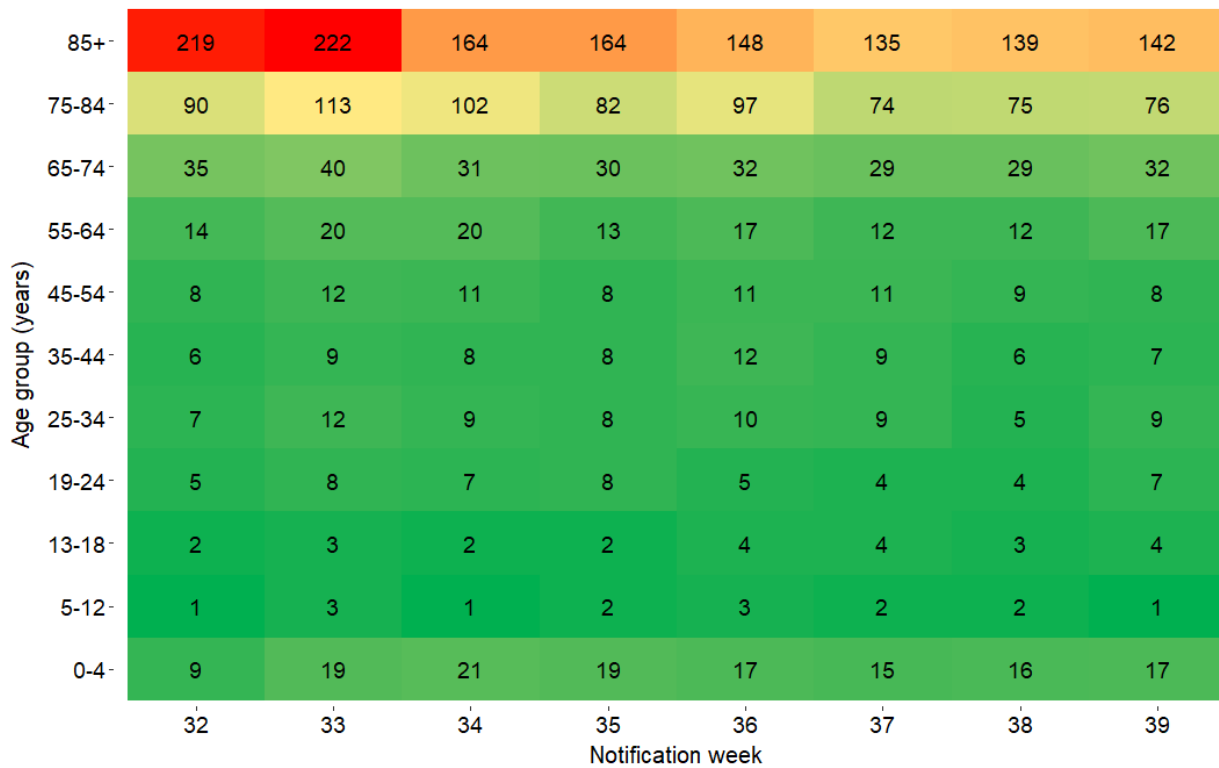


Figure 3: Heat map of weekly age-specific incidence rates of confirmed COVID-19 cases per 100,000 population in Ireland for the last 8 weeks

## Cases and incidence by county

**Table 3:** Characteristics of confirmed COVID-19 cases by county and descending incidence rate per 100,000 notified in Ireland, during week 39, 2023\*

County	Number of cases	Percent	Incidence rate per 100,000
Waterford	44	6.2	37.9
Sligo	22	3.1	33.6
Kilkenny	28	3.9	28.2
Westmeath	21	3.0	23.7
Donegal	37	5.2	23.2
Roscommon	15	2.1	23.2
Leitrim	7	1.0	21.8
Carlow	12	1.7	21.1
Limerick	41	5.8	21.0
Offaly	16	2.3	20.5
Wexford	30	4.2	20.0
Cavan	15	2.1	19.7
Kerry	27	3.8	18.3
Monaghan	10	1.4	16.3
Longford	6	0.8	14.7
Dublin	196	27.6	14.5
Clare	16	2.3	13.5
Cork	67	9.4	12.3
Kildare	23	3.2	10.3
Laois	7	1.0	8.3
Galway	21	3.0	8.1
Tipperary	13	1.8	8.1
Louth	10	1.4	7.8
Mayo	8	1.1	6.1
Wicklow	8	1.1	5.6
Meath	10	1.4	5.1

\* County data may not be accurately reflected in the most recent week due to ongoing data validations

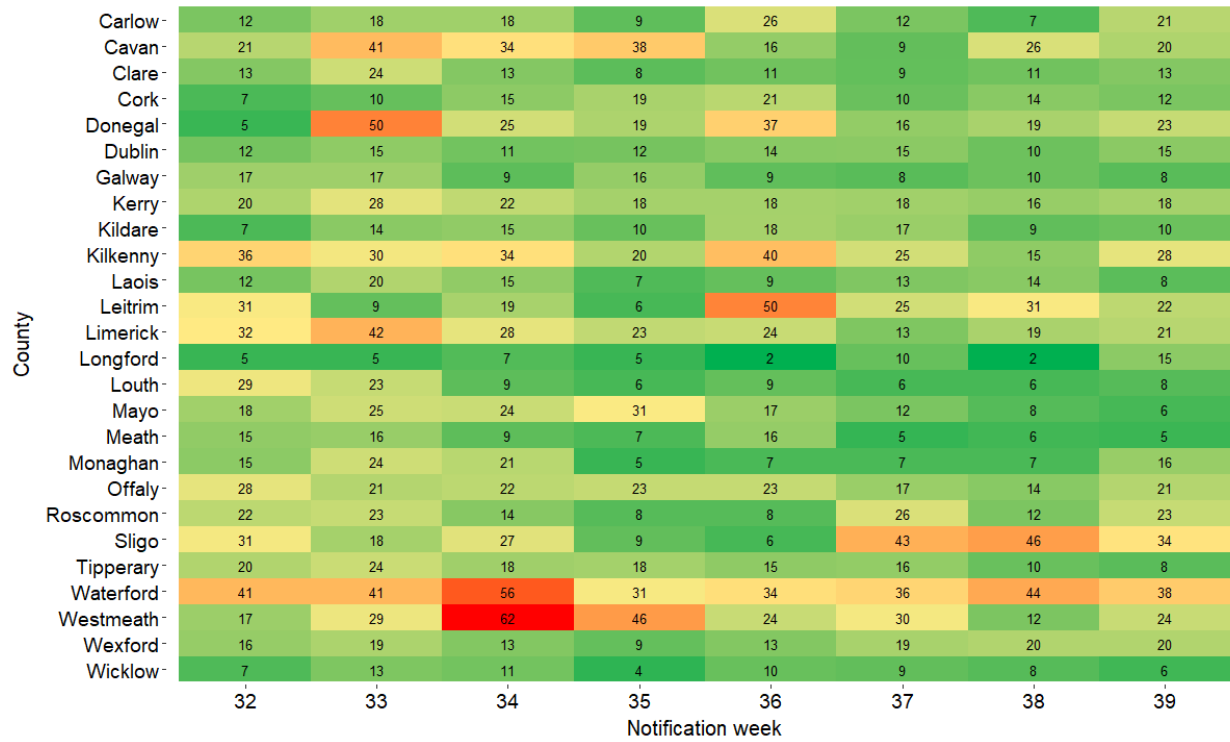


Figure 4: Heat map of weekly incidence rates of confirmed COVID-19 cases per 100,000 population, by county, notified in Ireland for the last 8 weeks



## Hospitalisations

A total of 341 hospitalised confirmed COVID-19 cases were recorded in the latest epidemiological week, week 39 2023.

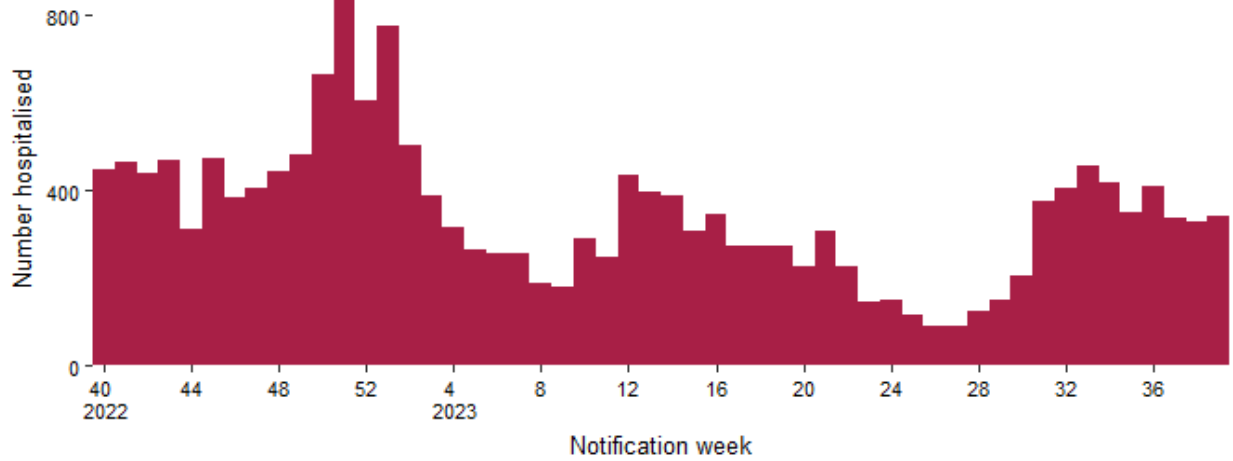


Figure 5: Hospitalisations among confirmed COVID-19 cases notified on CIDR in Ireland between week 40, 2022 and week 39, 2023

**Table 4:** Number of COVID-19 cases and hospital admissions by age group in Ireland for week<sup>2</sup> 39, 2023 based on week of notification<sup>3</sup>

Age group	Week 39, 2023			Total 2023		
	Total cases	Hospitalised cases		Total cases	Hospitalised cases	
	Number of cases	Number of cases	Percentage	Number of cases	Number of cases	Percentage
0-4	56	32	57.1	1,225	705	57.6
5-12	3	3	100.0	300	128	42.7
13-18	15	7	46.7	385	109	28.3
19-24	23	4	17.4	935	178	19.0
25-34	59	10	16.9	2,807	459	16.4
35-44	54	12	22.2	3,402	554	16.3
45-54	48	11	22.9	3,209	653	20.3
55-64	88	40	45.5	3,251	1,119	34.4
65-74	119	69	58.0	3,751	2,177	58.0
75-84	149	91	61.1	5,148	3,310	64.3
85+	96	62	64.6	3,682	2,234	60.7
Unknown	0	0	0.0	4	1	25.0

<sup>2</sup> Hospitalisations may be underestimated for recent weeks as the outcome may not yet have occurred or may not yet have been reported to CIDR

<sup>3</sup> Data are based on the date the case was notified on CIDR, and not the date of hospital admission

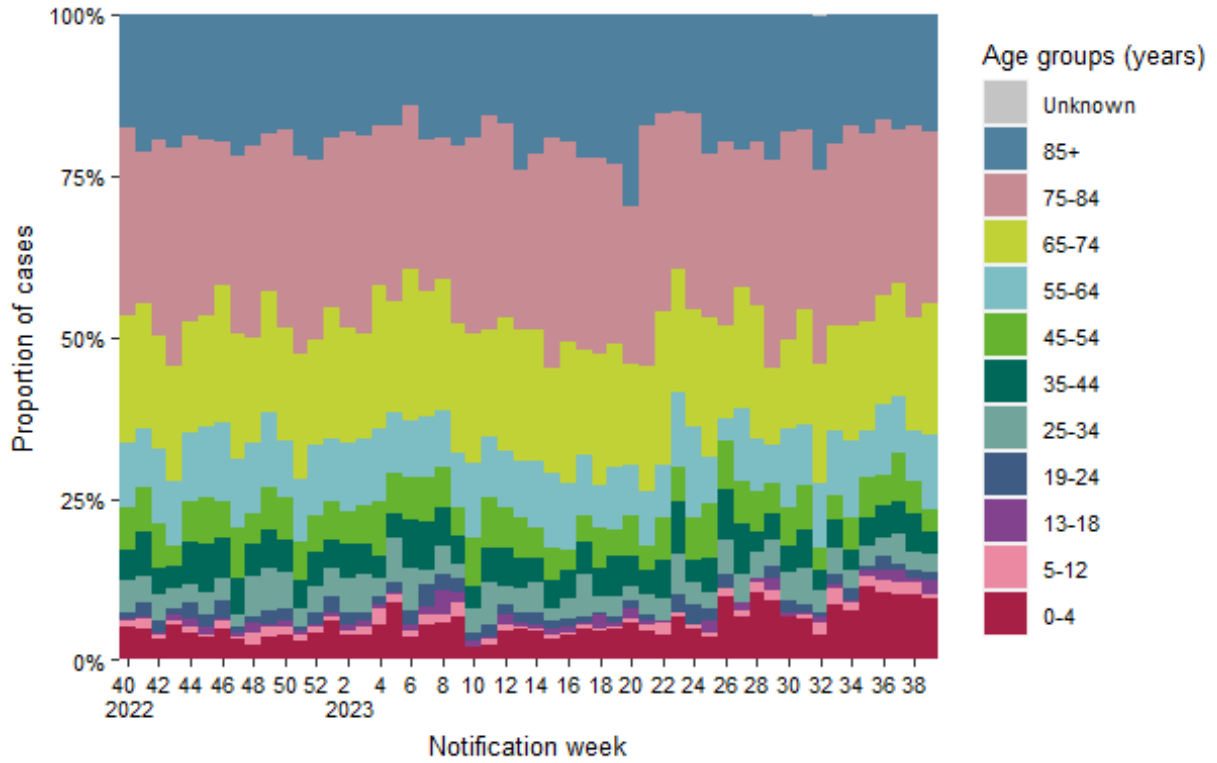


Figure 6: Age distribution of hospitalised confirmed COVID-19 cases notified on CIDR in Ireland between week 40, 2022 and week 39, 2023

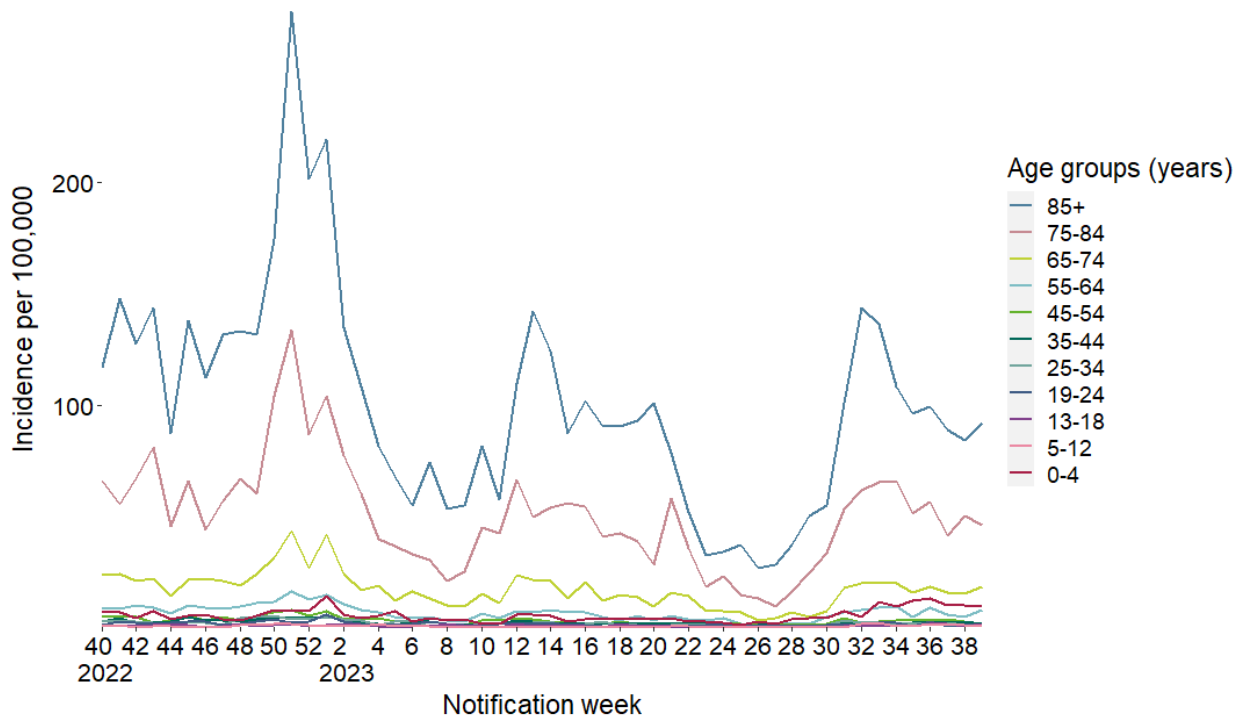


Figure 7: Incidence rate by age group of hospitalisations among confirmed COVID-19 cases on CIDR in Ireland between week 40, 2022 and week 39, 2023

## ICU admissions

A total of 3 COVID-19 cases were admitted to ICU in the latest epidemiological week<sup>3</sup>, week 39 2023.

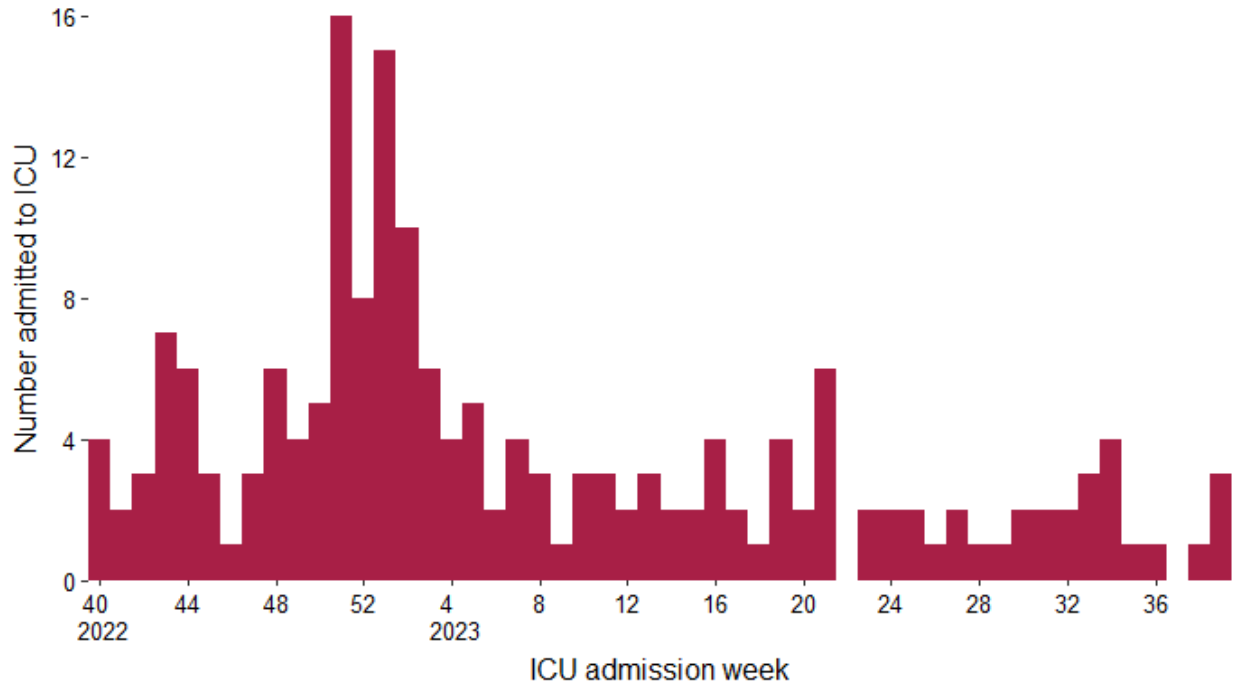


Figure 8: Number of COVID-19 ICU admissions in Ireland by week of ICU admission, between week 40, 2022 and week 39, 2023<sup>4</sup>

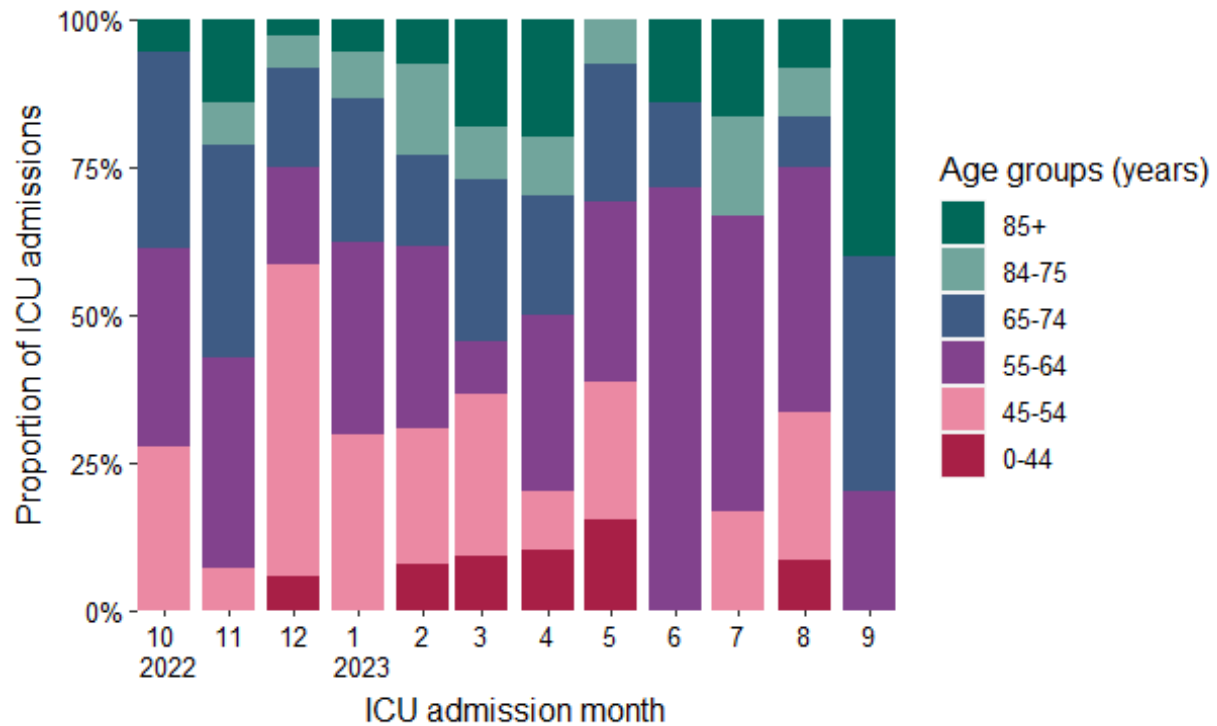


Figure 9: Age distribution of confirmed COVID-19 cases admitted to ICU by month of admission between October, 2022 and September, 2023

<sup>4</sup> Please note that most recent weeks may not yet reflect all admissions

## Deaths

Please note the below figures and tables include all cases (confirmed, probable and possible) who have died.

A total of 1 case had a date of death in the latest epidemiological week, 39. The mean and median age of those who died in that week was 85 years respectively.

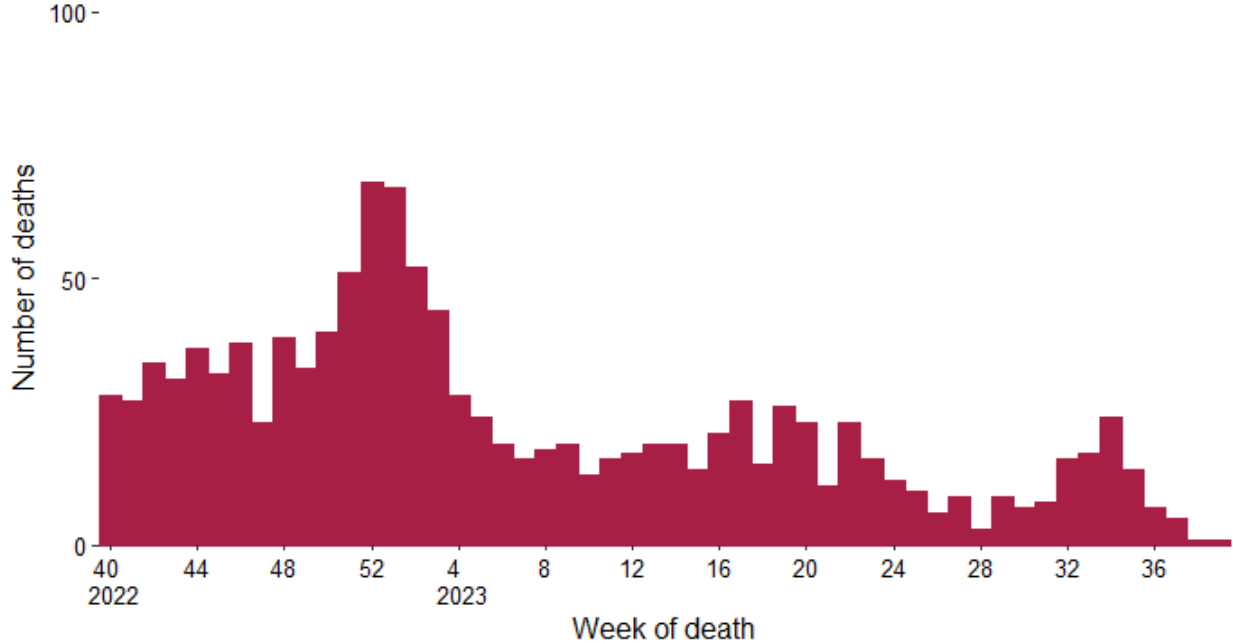


Figure 10: Total number of COVID-19 deaths notified by week of death, cases with a date of notification from week 40, 2022 to 39, 2023<sup>5</sup>. Date of death missing for 0 of the reported deaths

<sup>5</sup> Please note that most recent weeks may not yet reflect all deaths

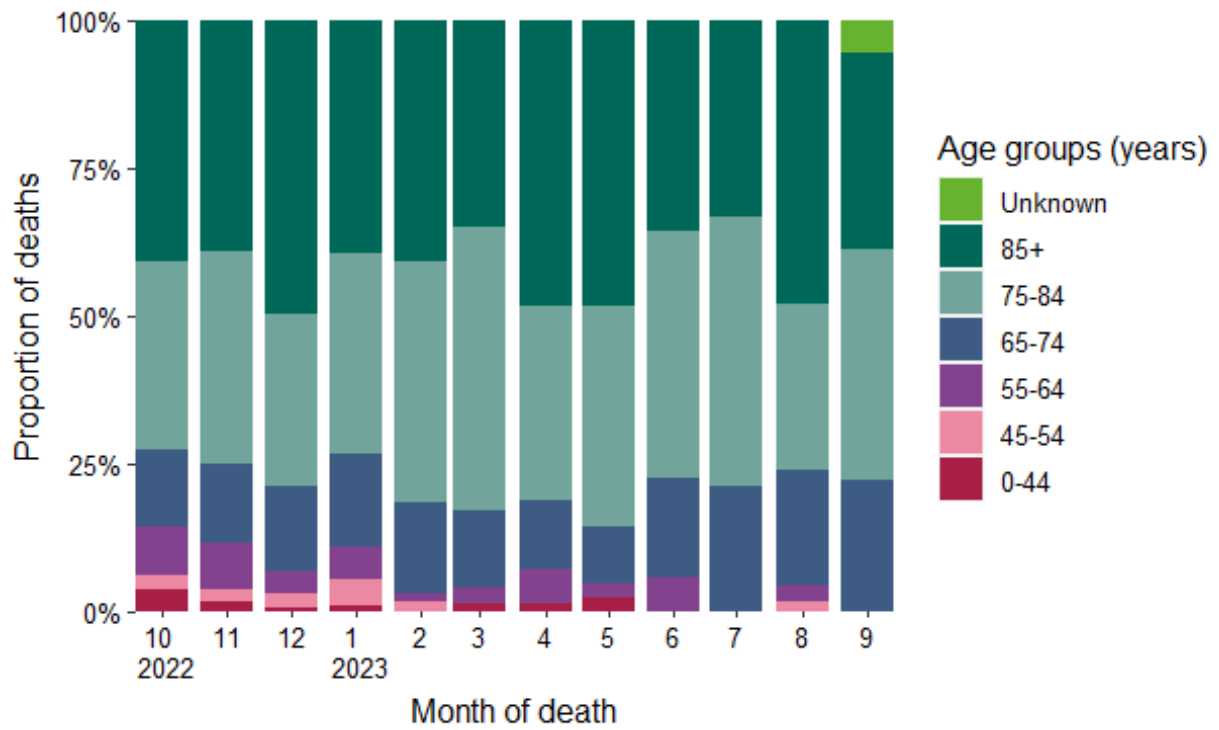


Figure 11: Age distribution of COVID-19 deaths notified on CIDR in Ireland between October, 2022 and September, 2023

## Laboratory data of SARS-CoV-2 PCR tests

In week 39, a total of 4,501 SARS-CoV-2 tests were performed, of which 700 (15.6%) were positive.

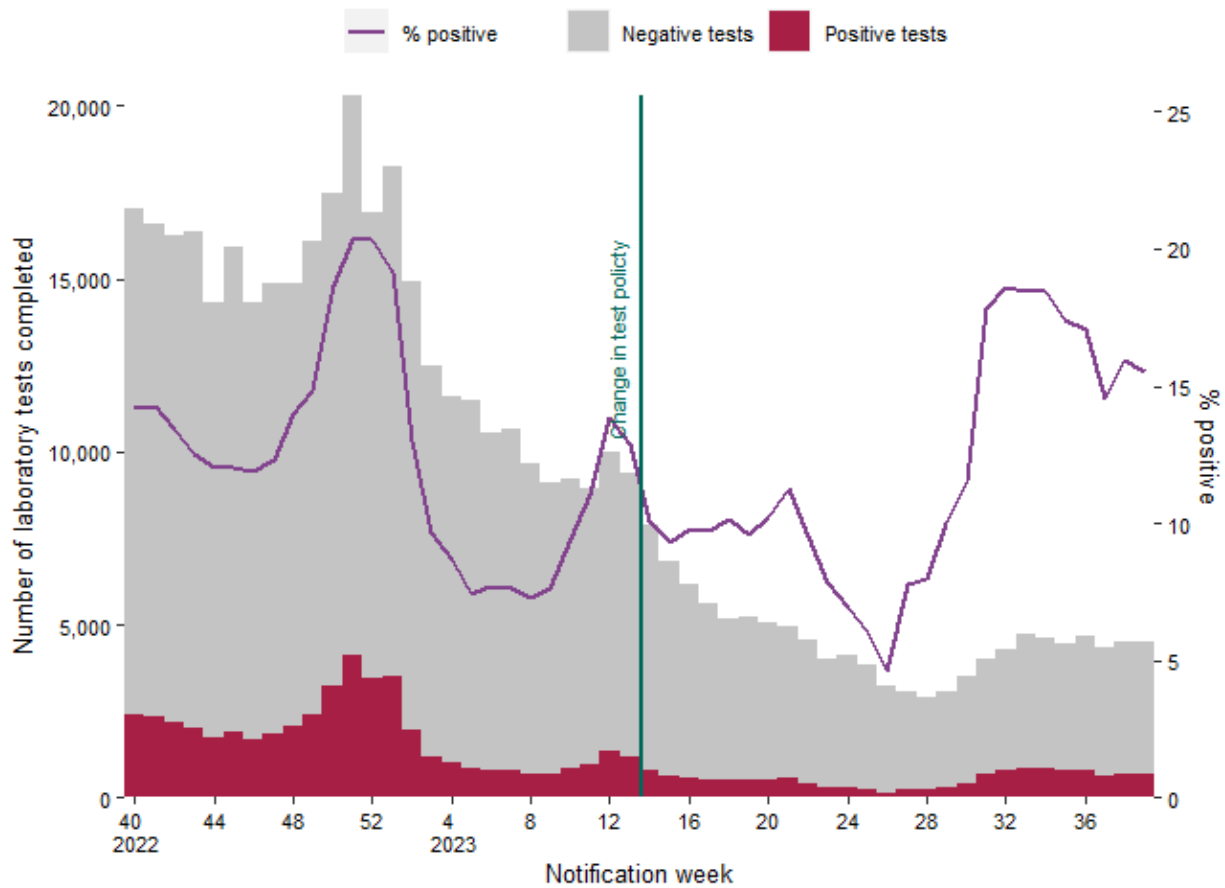


Figure 12: Number of completed laboratory tests by result and % positive tests<sup>6</sup> in Ireland between week 40, 2022 and week 39, 2023. Data source: Deloitte Ireland LLP<sup>7</sup>

<sup>6</sup> Positive tests refer to all positive specimens and includes duplicates and individuals who were retested.

<sup>7</sup> Since 30/03/2023 (week 13, 2023), community test centres closed and PCR testing was only performed based on clinical assessment.

## Notes

### Technical Notes

#### 1. Data Source

Data are based on statutory notifications and were extracted from Computerised Infectious Disease Reporting (CIDR) system and the HSE COVID care tracker. Data are provisional and subject to ongoing review, validation and update. As a result, figures in this report may differ from previously published figures. Slide with Laboratory testing for SARS-CoV-2 data provided by Deloitte Ireland LLP

#### 2. Epidemiological date

Epidemiological date is based on the earliest of dates available on the case and taken from date of onset of symptoms, date of diagnosis, laboratory specimen collection date, laboratory received date, laboratory reported date or event creation date/notification date on CIDR. By using this date rather than event creation/ notification date, adjusts for any delays in testing/notification. Further information on epidemiological dates and weeks can be found on the [HPSC website](#).

#### 3. Population data

Population data were taken from Census 2016. Data were aggregated into the following age groups for the analysis: 0-4 years, 5-12 years, 13-18 years, 19-24 years, 25-34 years, 35-44 years, 45-54 years, 55-64 years, 65-74 years, 75-84 years and  $\geq 85$  years.

### Acknowledgements

Sincere thanks are extended to all those who are participating in the collection of data and reporting of data used in these reports. This includes the HSE COVID-19 Contact Management Programme (CMP), staff in ICU units, notifying clinicians, laboratory staff, public health doctors, nurses, surveillance scientists, microbiologists and administrative staff.

### Please refer to the Health Protection Surveillance (HPSC) website for

- [Epidemiology of COVID-19 in Ireland infohub](#)
- [Outbreaks/clusters in Ireland COVID-19 weekly report](#)
- [Monthly report on COVID-19 deaths reported in Ireland](#)
- [SARS-CoV-2 wastewater surveillance programme weekly reports](#)
- [Virus variants in Ireland COVID-19 summary report](#)
- [Epidemiology of intensive care admissions in cases of COVID-19 in Ireland](#)