



Weekly report on the epidemiology of COVID-19 in Ireland

Week 30, 2023

- The epidemiological weeks in this report, run from Sunday to Saturday. Please refer to the [HPSC website](#) for a complete list of epidemiological weeks with start and end dates for 2020-2023.
- Data for this report are based on cases notified on the Computerised Infectious Disease Reporting (CIDR) up to midnight 29/07/2023. Data were extracted from CIDR system on 01/08/2023. Data are provisional and subject to ongoing review, validation and update. As a result, figures in this report may differ from previously published figures.
- Data should be interpreted in the context of the current testing policy. Testing policies can affect the number and age distribution of confirmed cases notified on CIDR. Information on the current testing policy in Ireland can be found [here](#)

Key points

Notified confirmed cases

- In week 30 (between July 23 and July 29 2023) there were 419 new confirmed COVID-19 cases reported on CIDR. This is an increase of 51.8% compared to week 29 when there were 276 confirmed COVID-19 cases notified.
- The highest number of new confirmed COVID-19 cases in week 30 was in the age group of 75-84 years with 22.7% of notified cases in week 30.

Laboratory data of SARS-CoV-2 PCR tests

- In week 30, a total of 3,270 SARS-CoV-2 tests were performed, of which 377 (11.5%) were positive. This is an increase compared to the previous week, 29, when 9.8% were positive.

Deaths

- Since the start of the pandemic 9,125 COVID-19 deaths among notified COVID-19 cases have been reported on CIDR. Of these, 2 had a date of death in week 30.

Table 1: Summary characteristics of COVID-19 cases notified in Ireland during week 30, 2023 and 2023 to date

	Week 30, 2023		Total 2023	
	Number	Percentage	Number	Percentage
Total number of confirmed cases	419		21,370	
Incidence rate of confirmed cases per 100,000 population	8.8		448.8	
Severe cases				
Number of cases hospitalised	206*	49.16	8,207*	38.40
Number of cases admitted to ICU	0*	0.00	93*	0.44
Number of deaths among confirmed cases	1*	0.24	477*	2.23

* The number of cases hospitalised, cases admitted to ICU and deaths described in the above table relate only to COVID-19 cases who were notified during this reporting period, and where the outcome is known at the time of reporting. It does not reflect all hospitalisations, ICU admissions and deaths related to COVID-19 which occurred during the period covered by the report. It also does not reflect the final number of cases hospitalised, admitted to ICU or deaths for these cases notified during this period as the outcome may not yet have occurred, or is yet to be notified

Confirmed cases of COVID-19

Since the start of 2023, 21,370 confirmed COVID-19 cases have been notified on CIDR. In the past week, week 30 2023, 419 confirmed COVID-19 cases were reported on CIDR. This is an increase of 51.8% compared to week 29 when 276 confirmed COVID-19 cases were notified. Figure 1 shows the epidemiological curve of COVID-19 cases notified in Ireland from week 1 2022 to week 30 2023. Data since the start of the pandemic is available on the [Epidemiology of COVID-19 in Ireland infohub](#).

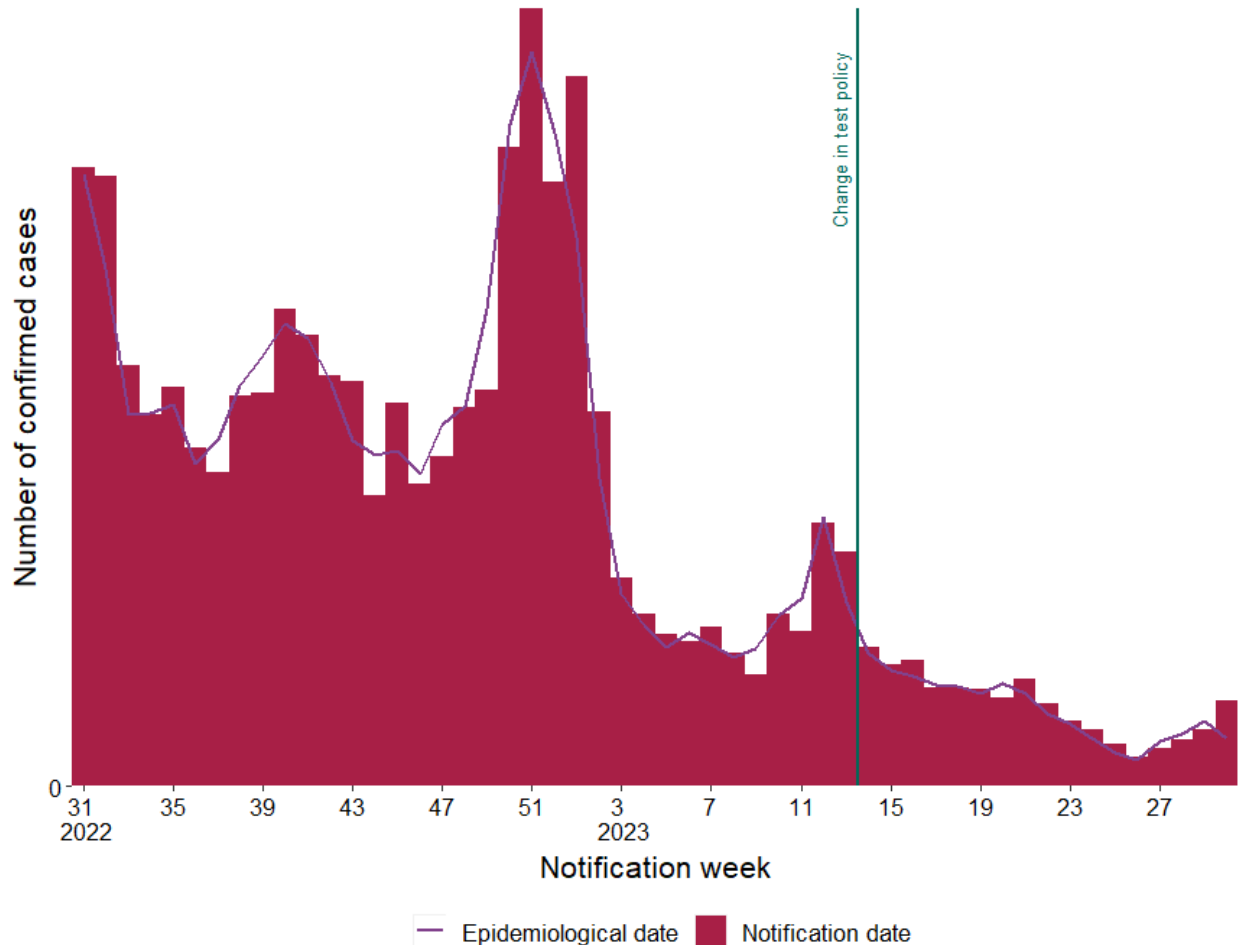


Figure 1a: Number of confirmed COVID-19 cases by notification week and epidemiological date in Ireland between week 31, 2022 and week 30, 2023. The red bars represent the number of confirmed cases by notification date. The purple line represents the number of cases by epidemiological date. The dark blue horizontal lines indicate a change in test policy^{1 2}

¹ Since 28/02/2022 (week 9, 2022), PCR testing was only needed for symptomatic people in the community within certain risk groups: those who have not had booster vaccination and are aged 55 years and older; those with a high-risk medical conditions; those who are immunocompromised; those who live in the same household as a person who is immunocompromised; those who provide care or support for person they know to be immunocompromised; those who are pregnant; Healthcare Workers.

² Since 30/03/2023 (week 13, 2023), community test centres closed and PCR testing was only performed based on clinical assessment.

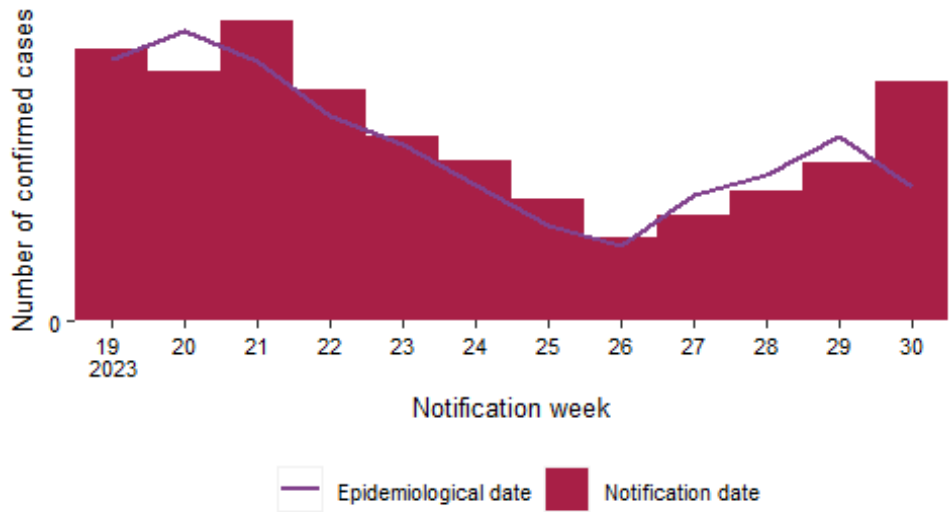
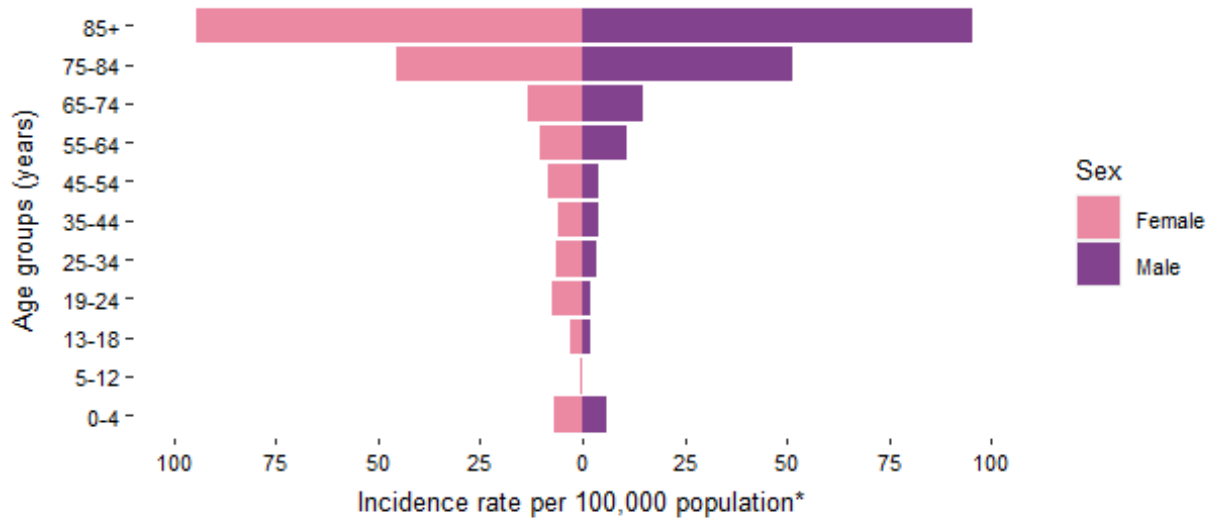


Figure 1b: Number of confirmed COVID-19 cases by notification week and epidemiological date in Ireland in the last 12 weeks. The red bars represent the number of confirmed cases by notification date. The purple line represents the number of cases by epidemiological date.

Confirmed COVID-19 cases by age and sex

Table 2: Summary characteristics by age and sex of COVID-19 cases notified in Ireland during week 30, 2023 and 2023 to date

	Week 30, 2023		Total 2023	
	Number	Percentage	Number	Percentage
Gender				
Males	177	42.2	8,964	41.9
Females	242	57.8	12,403	58.0
M:F ratio	0.73		0.72	
Age (years)				
Mean age	60		56	
Median age	65		58	
Age range	0 - 101		0 - 103	
Age groups (years)				
0-4	21	5.0	744	3.5
5-12	1	0.2	216	1.0
13-18	9	2.1	291	1.4
19-24	15	3.6	767	3.6
25-34	33	7.9	2,302	10.8
35-44	37	8.8	2,863	13.4
45-54	39	9.3	2,669	12.5
55-64	53	12.6	2,549	11.9
65-74	52	12.4	2,683	12.6
75-84	95	22.7	3,613	16.9
85+	64	15.3	2,671	12.5
Unknown	NA	0.0	2	0.0



*Excluding 0 for whom age is unknown, 0 for whom sex is unknown and 0 for whom both are unknown

Figure 2: Cumulative age and sex specific incidence rates of confirmed COVID-19 cases per 100,000 population for current week 30, 2023

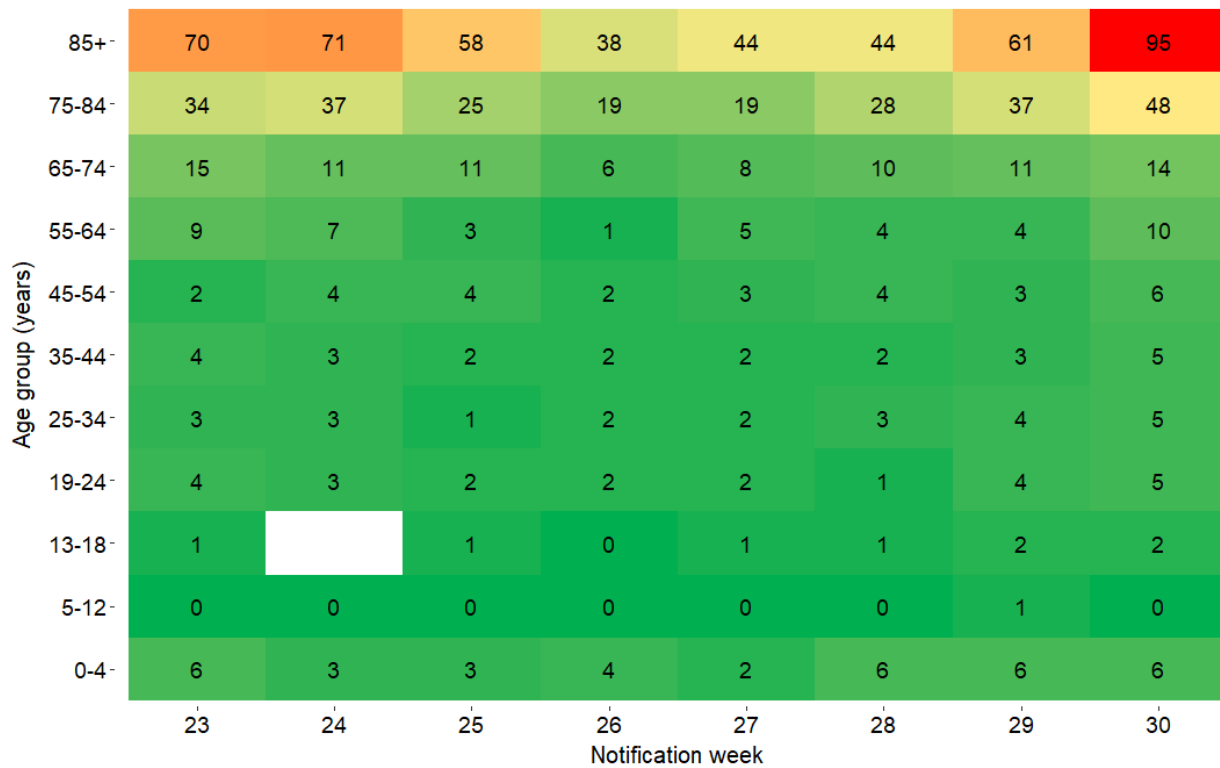


Figure 3: Heat map of weekly age-specific incidence rates of confirmed COVID-19 cases per 100,000 population in Ireland for the last 8 weeks

Cases and incidence by county

Table 3: Characteristics of confirmed COVID-19 cases by county and descending incidence rate per 100,000 notified in Ireland, during week 30, 2023*

County	Number of cases	Percent	Incidence rate per 100,000
Kerry	52	12.4	35.2
Leitrim	6	1.4	18.7
Sligo	10	2.4	15.3
Carlow	8	1.9	14.1
Tipperary	20	4.8	12.5
Westmeath	11	2.6	12.4
Kilkenny	12	2.9	12.1
Limerick	22	5.3	11.3
Cavan	8	1.9	10.5
Wexford	15	3.6	10.0
Dublin	126	30.1	9.4
Roscommon	6	1.4	9.3
Offaly	7	1.7	9.0
Waterford	10	2.4	8.6
Mayo	11	2.6	8.4
Cork	36	8.6	6.6
Galway	16	3.8	6.2
Louth	8	1.9	6.2
Donegal	9	2.1	5.7
Longford	2	0.5	4.9
Clare	5	1.2	4.2
Meath	8	1.9	4.1
Monaghan	2	0.5	3.3
Kildare	6	1.4	2.7
Laois	2	0.5	2.4
Wicklow	1	0.2	0.7

* County data may not be accurately reflected in the most recent week due to ongoing data validations

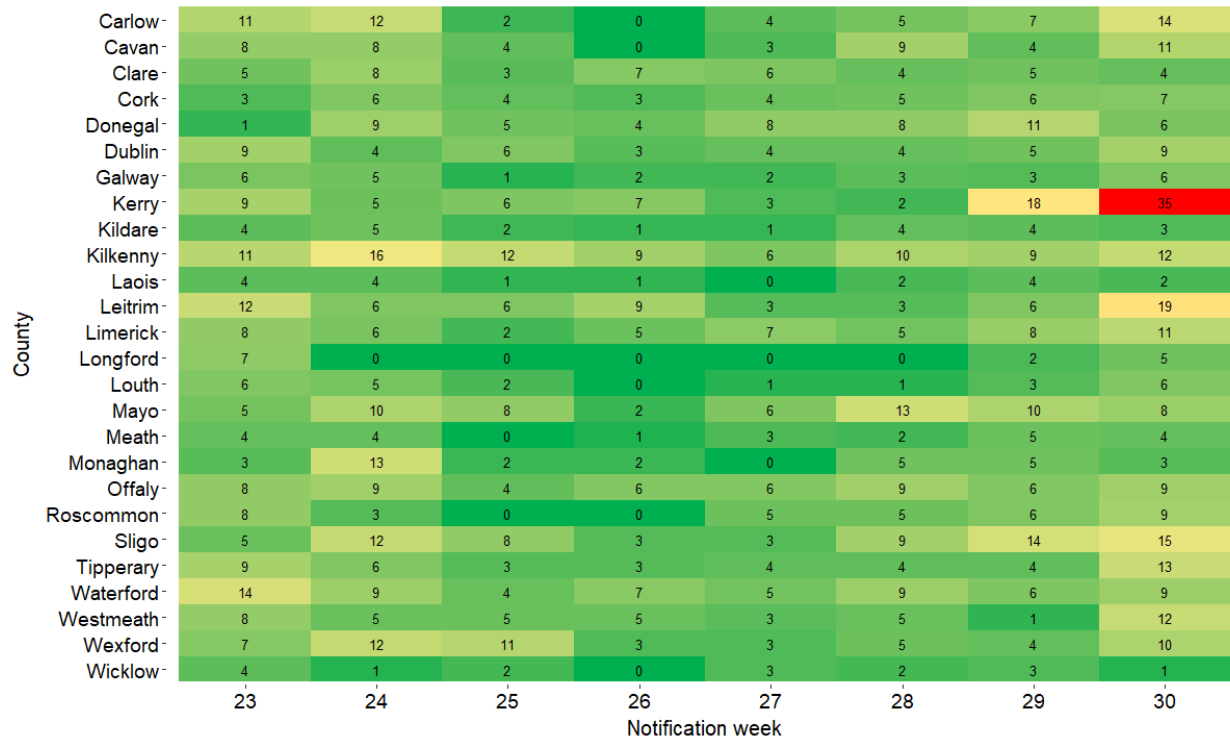


Figure 4: Heat map of weekly incidence rates of confirmed COVID-19 cases per 100,000 population, by county, notified in Ireland for the last 8 weeks

Hospitalisations

A total of 206 hospitalised confirmed COVID-19 cases were recorded in the latest epidemiological week, week 30 2023.

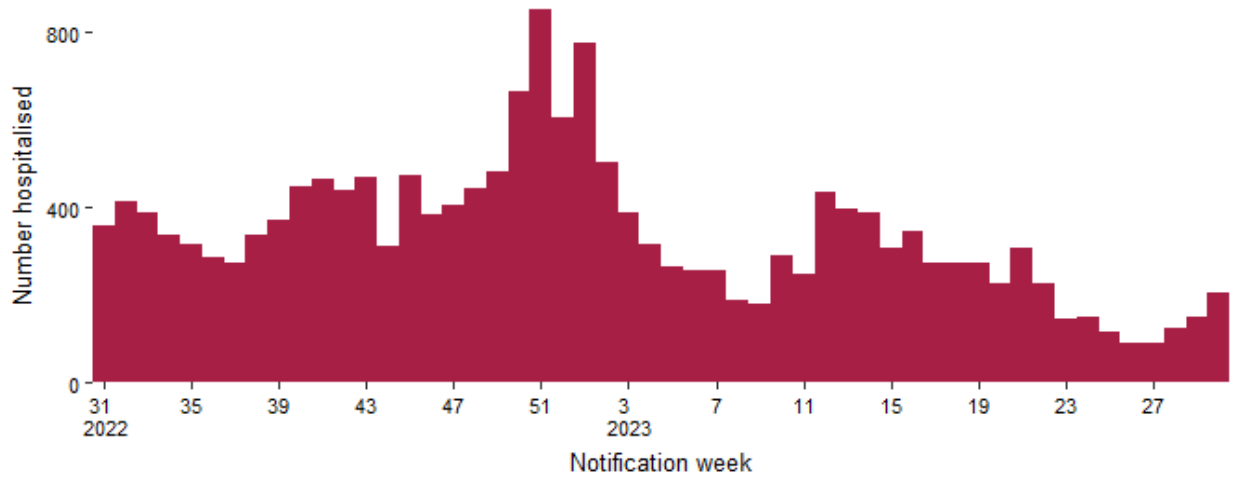


Figure 5: Hospitalisations among confirmed COVID-19 cases notified on CIDR in Ireland between week 31, 2022 and week 30, 2023

Table 4: Number of COVID-19 cases and hospital admissions by age group in Ireland for week³ 30, 2023 based on week of notification⁴

Age group	Week 30, 2023			Total 2023		
	Total cases	Hospitalised cases		Total cases	Hospitalised cases	
	Number of cases	Number of cases	Percentage	Number of cases	Number of cases	Percentage
0-4	21	14	66.7	744	411	55.2
5-12	1	0	0.0	216	73	33.8
13-18	9	1	11.1	291	75	25.8
19-24	15	4	26.7	767	134	17.5
25-34	33	8	24.2	2,302	332	14.4
35-44	37	8	21.6	2,863	404	14.1
45-54	39	11	28.2	2,669	477	17.9
55-64	53	24	45.3	2,549	785	30.8
65-74	52	29	55.8	2,683	1,575	58.7
75-84	95	69	72.6	3,613	2,350	65.0
85+	64	38	59.4	2,671	1,591	59.6
Unknown	0	0	0.0	2	0	0.0

³ Hospitalisations may be underestimated for recent weeks as the outcome may not yet have occurred or may not yet have been reported to CIDR

⁴ Data are based on the date the case was notified on CIDR, and not the date of hospital admission

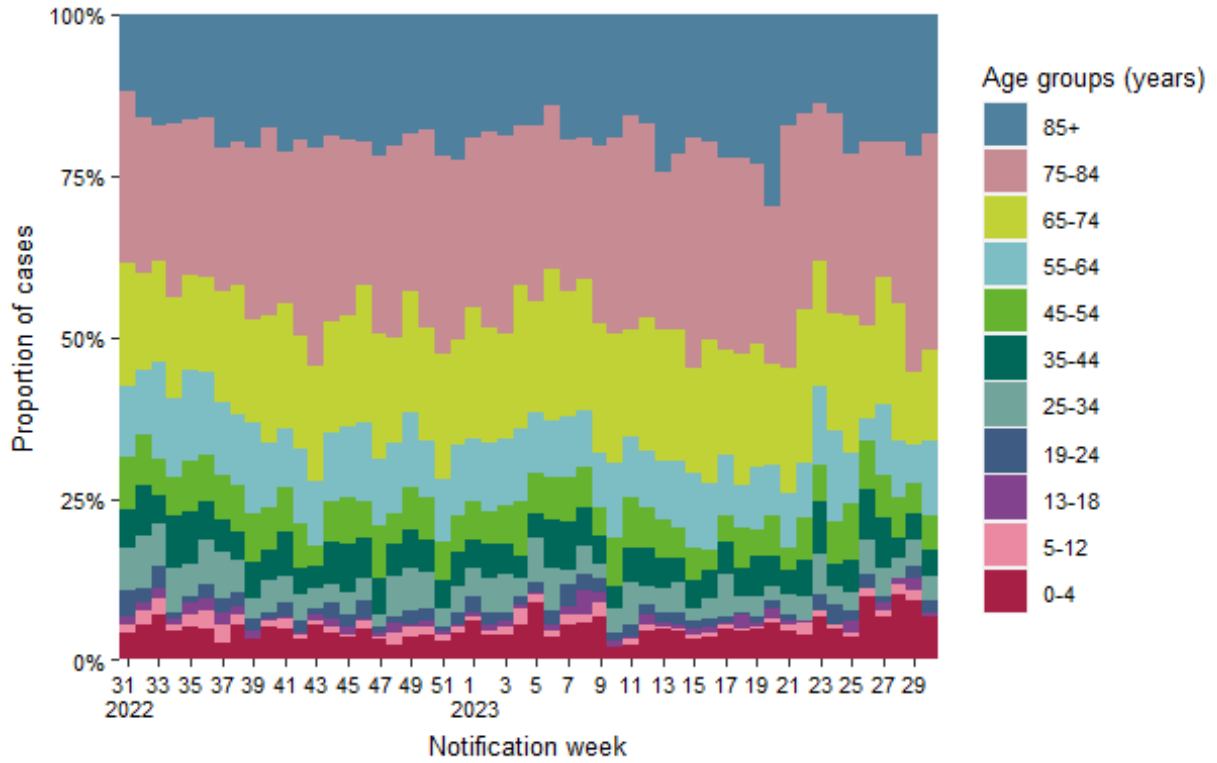


Figure 6: Age distribution of hospitalised confirmed COVID-19 cases notified on CIDR in Ireland between week 31, 2022 and week 30, 2023

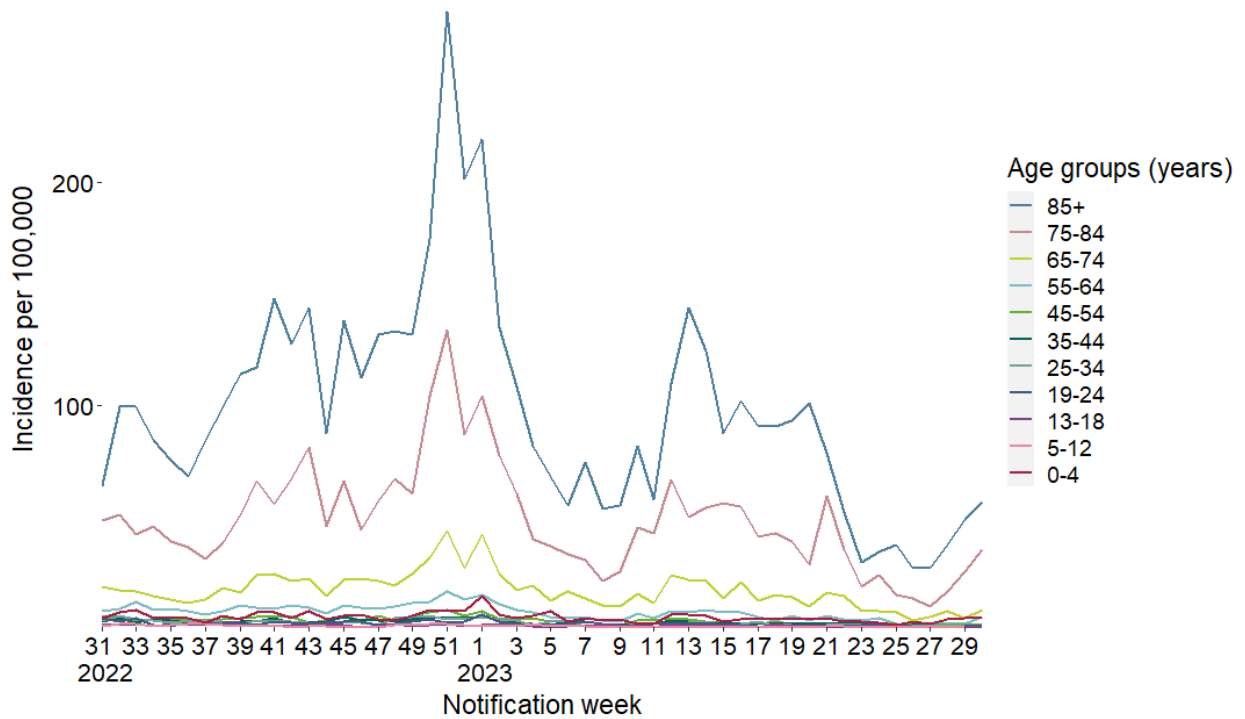


Figure 7: Incidence rate by age group of hospitalisations among confirmed COVID-19 cases on CIDR in Ireland between week 31, 2022 and week 30, 2023

ICU admissions

A total of 0 COVID-19 cases were admitted to ICU in the latest epidemiological week⁶, week 30 2023.

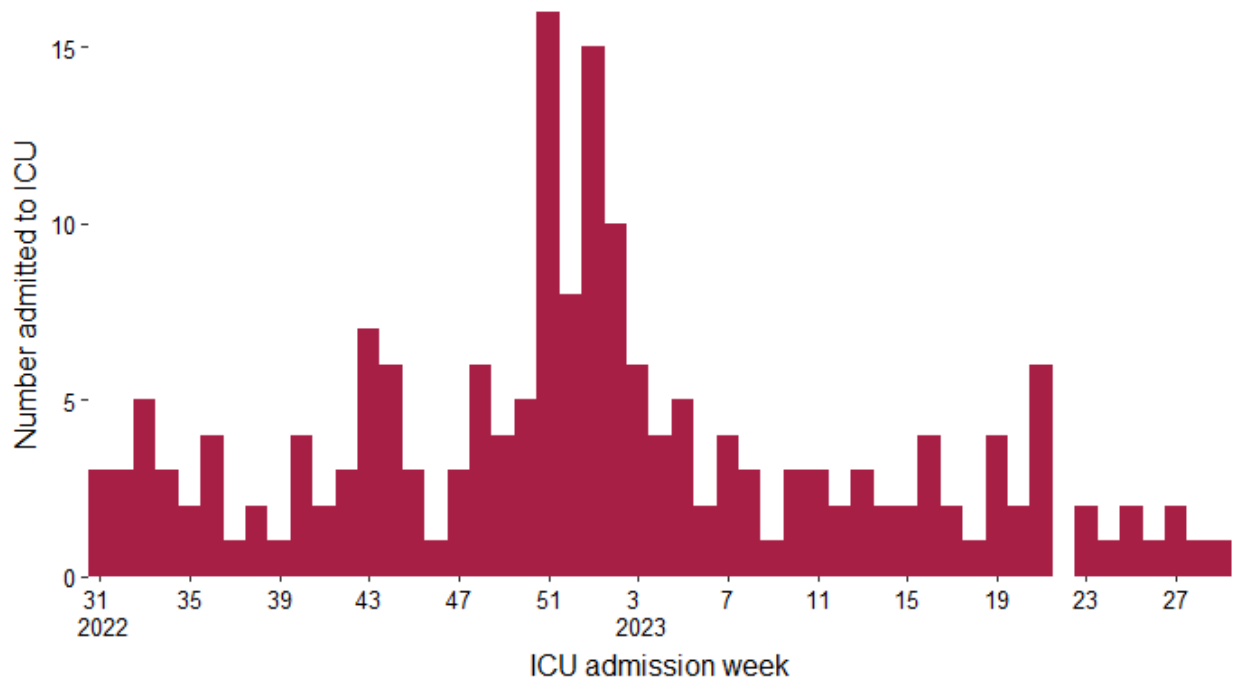


Figure 8: Number of ICU COVID-19 ICU admissions in Ireland by week of ICU admission, between week 31, 2022 and week 30, 2023⁵

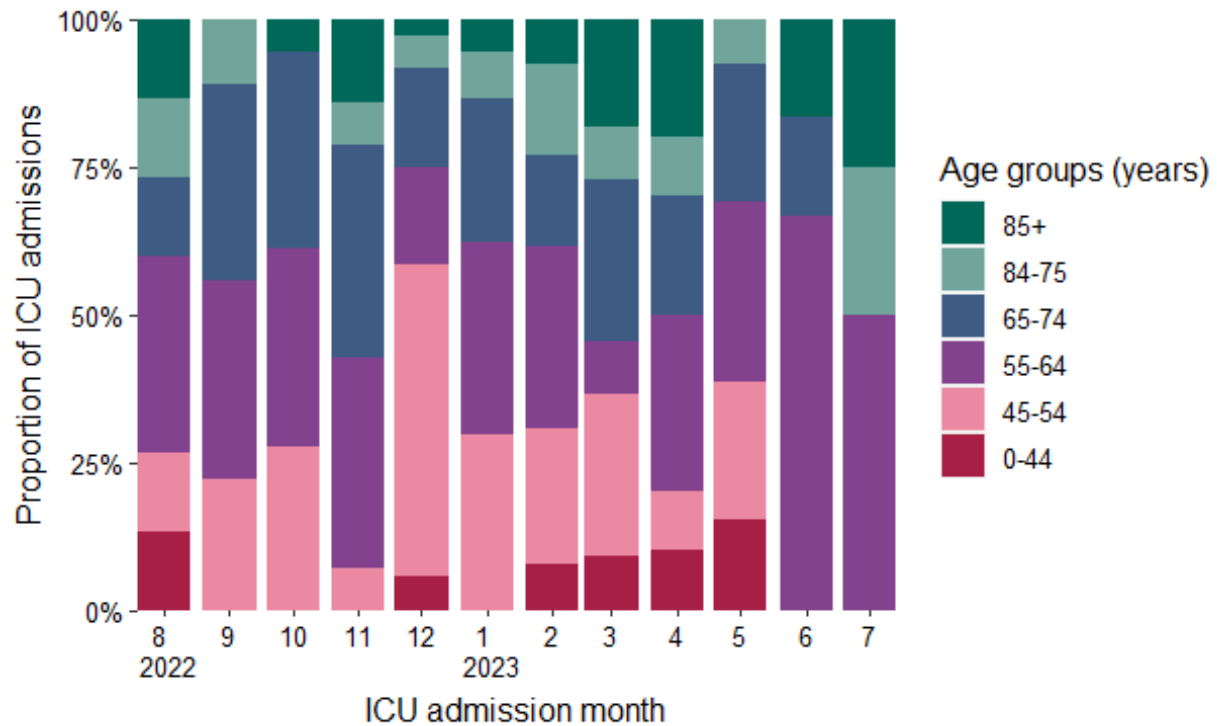


Figure 9: Age distribution of confirmed COVID-19 cases admitted to ICU by month of admission August, 2022 and July, 2023

⁵ Please note that most recent weeks may not yet reflect all admissions

Deaths

Please note the below figures and tables include all cases (confirmed, probable and possible) who have died.

A total of 2 cases had a date of death in the latest epidemiological week, 30. The mean and median age of those who died in the previous epidemiological week was 83 and 83 years respectively.

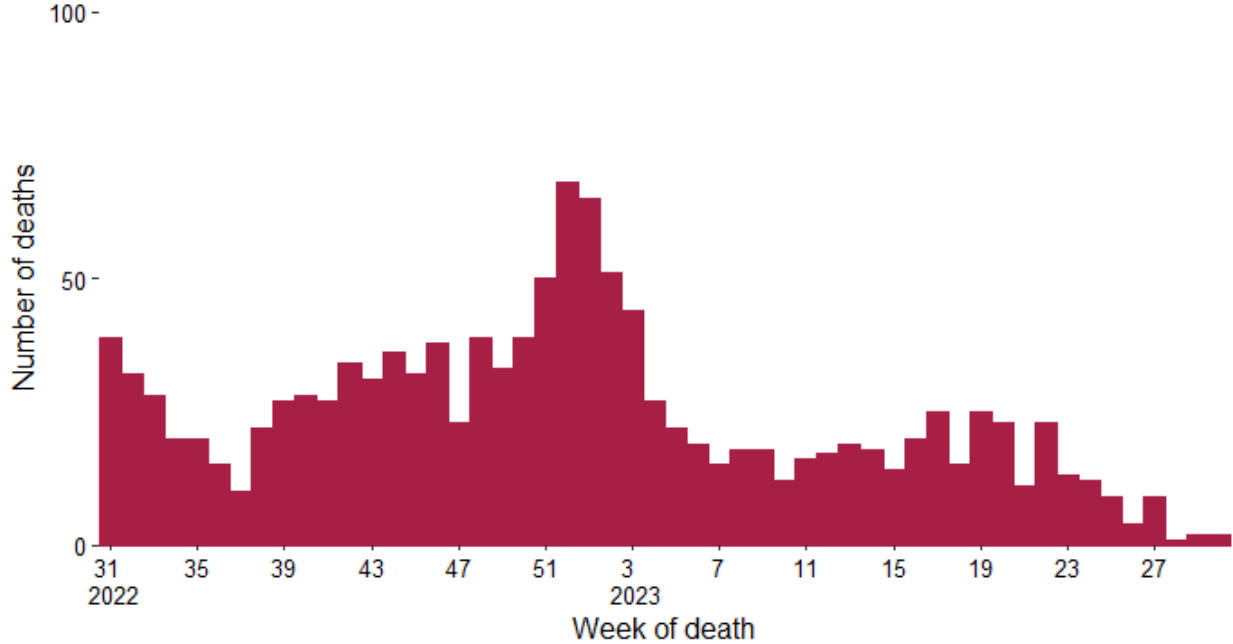


Figure 10: Total number of COVID-19 deaths notified by week of death, cases with a date of notification from week 31, 2022 to 30, 2023⁶. Date of death missing for 0 of the reported deaths

⁶ Please note that most recent weeks may not yet reflect all deaths

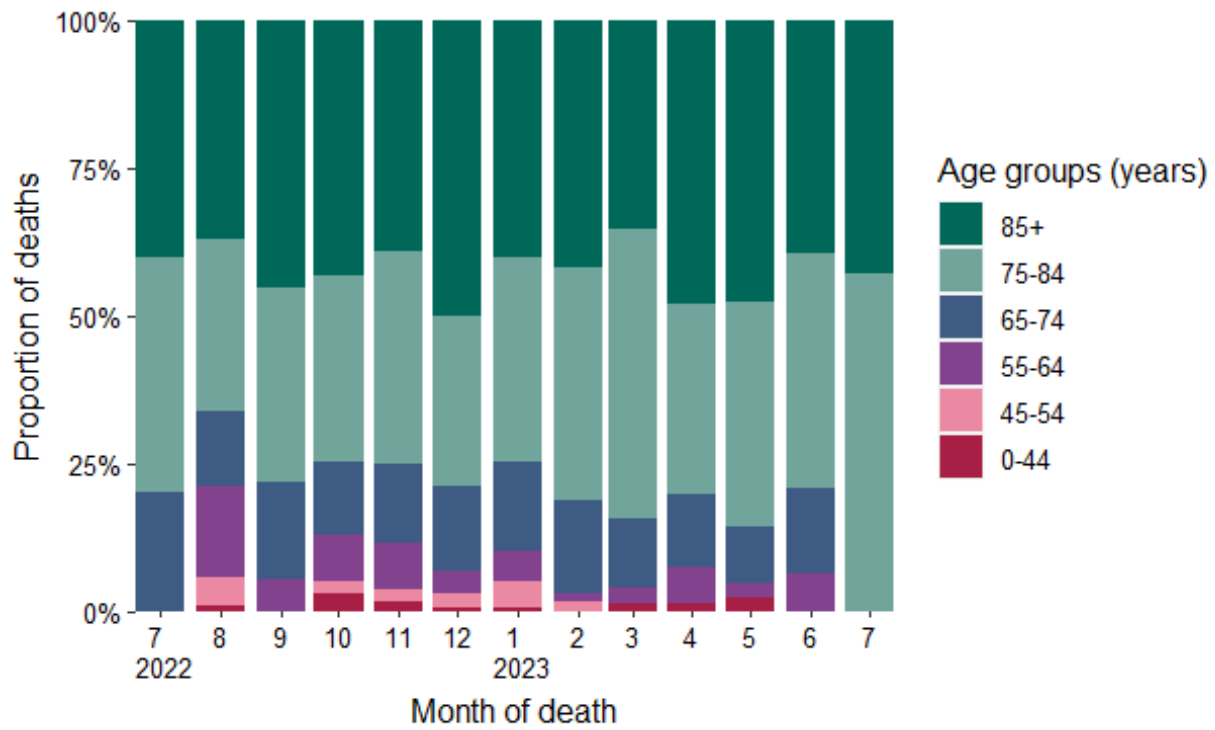


Figure 11: Age distribution of COVID-19 deaths notified on CIDR in Ireland between July, 2022 and July, 2023

Laboratory data of SARS-CoV-2 PCR tests

In week 30, a total of 3,270 SARS-CoV-2 tests were performed, of which 377 (11.5%) were positive.

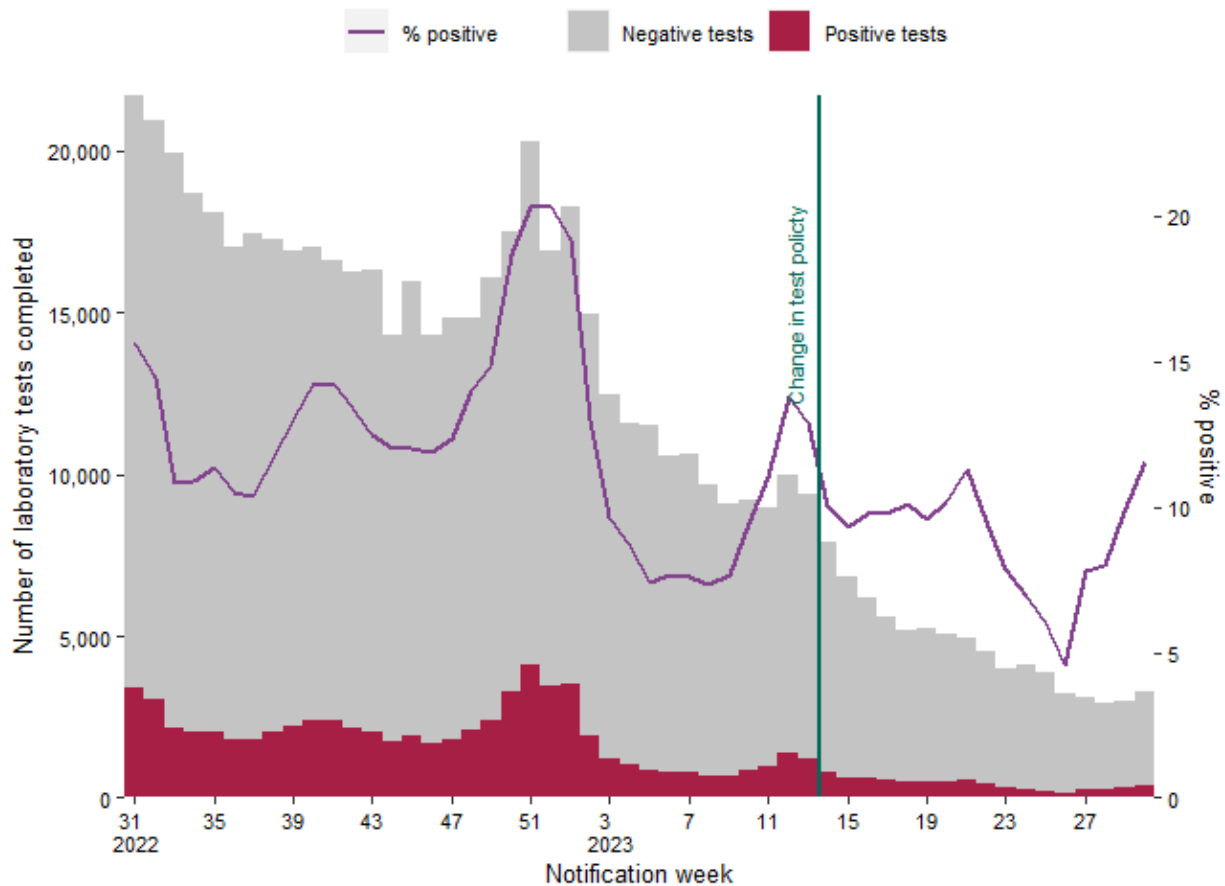


Figure 12: Number of completed laboratory tests by result and % positive tests⁷ in Ireland between week 31, 2022 and week 30, 2023. Data source: Deloitte Ireland LLP^{8, 9}

⁷ Positive tests refer to all positive specimens and includes duplicates and individuals who were retested.

⁸ Since 28/02/2022 (week 9), PCR testing is only needed for symptomatic people in the community within certain risk groups: those who have not had booster vaccination and are aged 55 years and older; those with a high-risk medical conditions; those who are immunocompromised; those who live in the same household as a person who is immunocompromised; those who provide care or support for person they know to be immunocompromised; those who are pregnant; Healthcare Workers.

⁹ Since 30/03/2023 (week 13, 2023), community test centres closed and PCR testing was only performed based on clinical assessment.

Notes

Technical Notes

1. Data Source

Data are based on statutory notifications and were extracted from Computerised Infectious Disease Reporting (CIDR) system and the HSE COVID care tracker. Data are provisional and subject to ongoing review, validation and update. As a result, figures in this report may differ from previously published figures. Slide with Laboratory testing for SARS-CoV-2 data provided by Deloitte Ireland LLP

2. Epidemiological date

Epidemiological date is based on the earliest of dates available on the case and taken from date of onset of symptoms, date of diagnosis, laboratory specimen collection date, laboratory received date, laboratory reported date or event creation date/notification date on CIDR. By using this date rather than event creation/ notification date, adjusts for any delays in testing/notification. Further information on epidemiological dates and weeks can be found on the [HPSC website](#).

3. Population data

Population data were taken from Census 2016. Data were aggregated into the following age groups for the analysis: 0-4 years, 5-12 years, 13-18 years, 19-24 years, 25-34 years, 35-44 years, 45-54 years, 55-64 years, 65-74 years, 75-84 years and ≥ 85 years.

Acknowledgements

Sincere thanks are extended to all those who are participating in the collection of data and reporting of data used in these reports. This includes the HSE COVID-19 Contact Management Programme (CMP), staff in ICU units, notifying clinicians, laboratory staff, public health doctors, nurses, surveillance scientists, microbiologists and administrative staff.

Please refer to the Health Protection Surveillance (HPSC) website for

- [Epidemiology of COVID-19 in Ireland infohub](#)
- [Outbreaks/clusters in Ireland COVID-19 weekly report](#)
- [Monthly report on COVID-19 deaths reported in Ireland](#)
- [SARS-CoV-2 wastewater surveillance programme weekly reports](#)
- [Virus variants in Ireland COVID-19 summary report](#)
- [Epidemiology of intensive care admissions in cases of COVID-19 in Ireland](#)