



# Weekly report on the epidemiology of COVID-19 in Ireland

## Week 21, 2023

- The epidemiological weeks in this report, run from Sunday to Saturday. Please refer to the [HPSC website](#) for a complete list of epidemiological weeks with start and end dates for 2020-2023.
- Data for this report are based on cases notified on the Computerised Infectious Disease Reporting (CIDR) up to midnight 27/05/2023. Data were extracted from CIDR system on 30/05/2023. Data are provisional and subject to ongoing review, validation and update. As a result, figures in this report may differ from previously published figures.
- Data should be interpreted in the context of the current testing policy. Testing policies can affect the number and age distribution of confirmed cases notified on CIDR. Information on the current testing policy in Ireland can be found [here](#)

## Key points

### Notified confirmed cases

- In week 21 (between May 21 and May 27 2023) there were 525 new confirmed COVID-19 cases reported on CIDR. This is an increase of 20.4% compared to week 20 when there were 436 confirmed COVID-19 cases notified.
- The highest number of new confirmed COVID-19 cases in week 21 was in the age group of 75-84 years with 28.8% of notified cases in week 21.

### Laboratory data of SARS-CoV-2 PCR tests

- In week 21, a total of 4,345 SARS-CoV-2 tests were performed, of which 456 (10.5%) were positive. This is stable compared to the previous week, (week 20), when 10% were positive.

### Deaths

- Since the start of the pandemic 8,979 COVID-19 deaths among notified COVID-19 cases have been reported on CIDR. Of these, one had a date of death in week 21.

**Table 1:** Summary characteristics of COVID-19 cases notified in Ireland during week 21, 2023 and 2023 to date

	Week 21, 2023		Total 2023	
	Number	Percentage	Number	Percentage
Total number of confirmed cases	525		18,915	
Incidence rate of confirmed cases per 100,000 population	11		397.2	
<b>Severe cases</b>				
Number of cases hospitalised	299*	56.95	6,898*	36.47
Number of cases admitted to ICU	4*	0.76	79*	0.42
Number of deaths among confirmed cases	3*	0.57	353*	1.87

*\* The number of cases hospitalised, cases admitted to ICU and deaths described in the above table relate only to COVID-19 cases who were notified during this reporting period, and where the outcome is known at the time of reporting. It does not reflect all hospitalisations, ICU admissions and deaths related to COVID-19 which occurred during the period covered by the report. It also does not reflect the final number of cases hospitalised, admitted to ICU or deaths for these cases notified during this period as the outcome may not yet have occurred, or is yet to be notified*

## Confirmed cases of COVID-19

Since the start of 2023, 18,915 confirmed COVID-19 cases have been notified on CIDR. In the past week, week 21 2023, 525 confirmed COVID-19 cases were reported on CIDR. This is an increase of 20.4% compared to week 20 when 436 confirmed COVID-19 cases were notified. Figure 1a shows the epidemiological curve of COVID-19 cases notified in Ireland from week 22 2022 to week 21 2023. Data since the start of the pandemic are available on the [Epidemiology of COVID-19 in Ireland infohub](#).

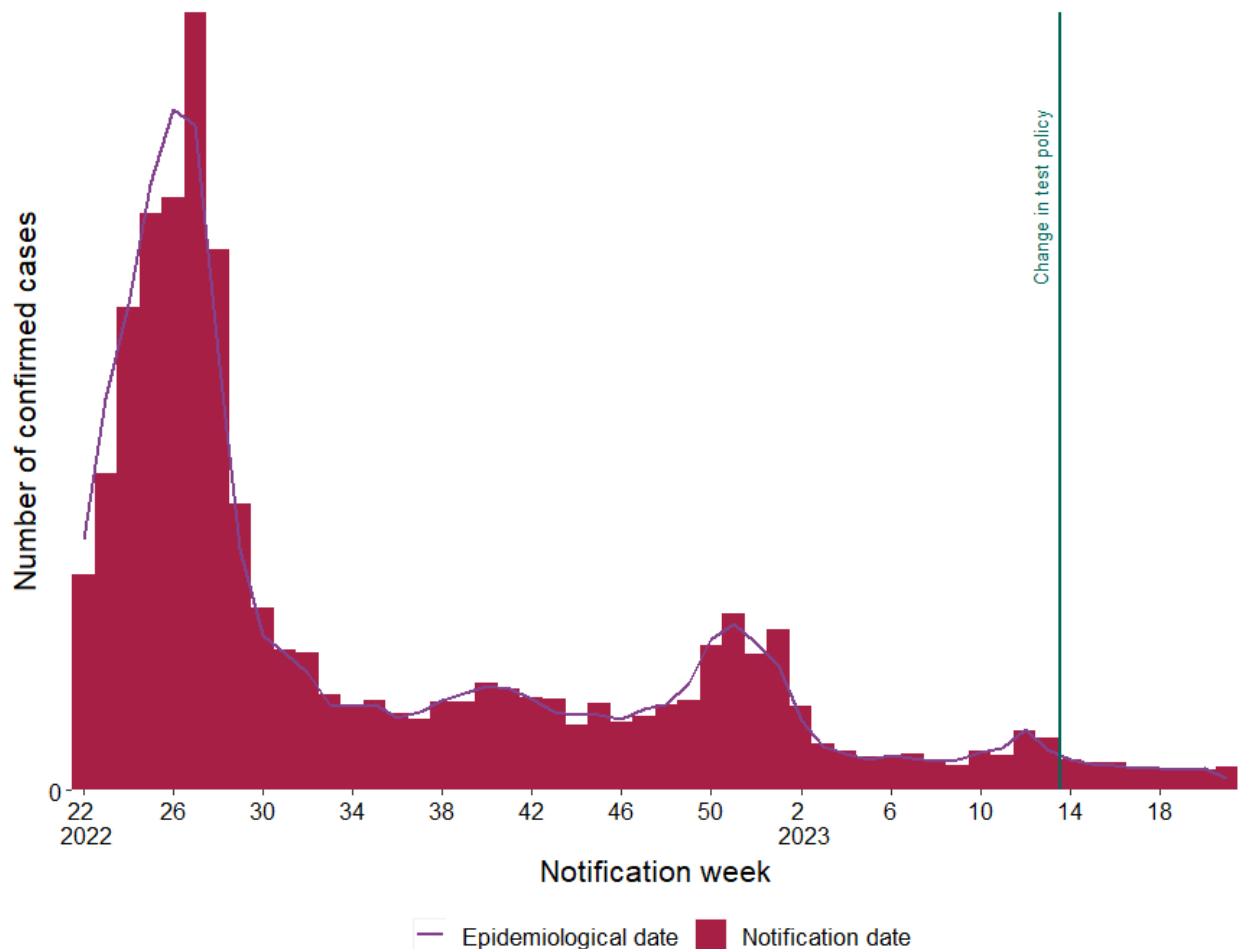


Figure 1a: Number of confirmed COVID-19 cases by notification week and epidemiological date in Ireland between week 22, 2022 and week 21, 2023. The red bars represent the number of confirmed cases by notification date. The purple line represents the number of cases by epidemiological date. The dark blue horizontal lines indicate a change in test policy<sup>1 2</sup>

<sup>1</sup> Since 28/02/2022 (week 9, 2022), PCR testing was only needed for symptomatic people in the community within certain risk groups: those who have not had booster vaccination and are aged 55 years and older; those with a high-risk medical conditions; those who are immunocompromised; those who live in the same household as a person who is immunocompromised; those who provide care or support for person they know to be immunocompromised; those who are pregnant; Healthcare Workers.

<sup>2</sup> Since 30/03/2023 (week 13, 2023), community test centres closed and PCR testing was only performed based on clinical assessment.

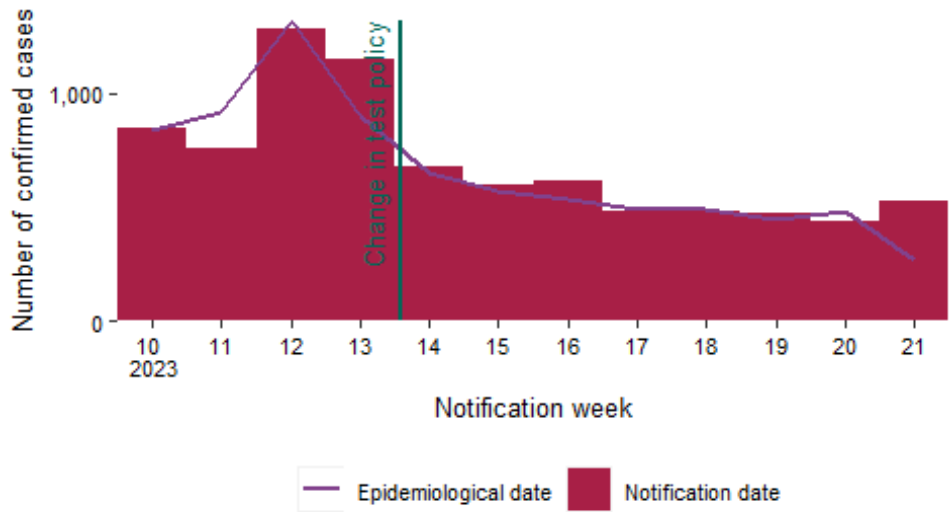
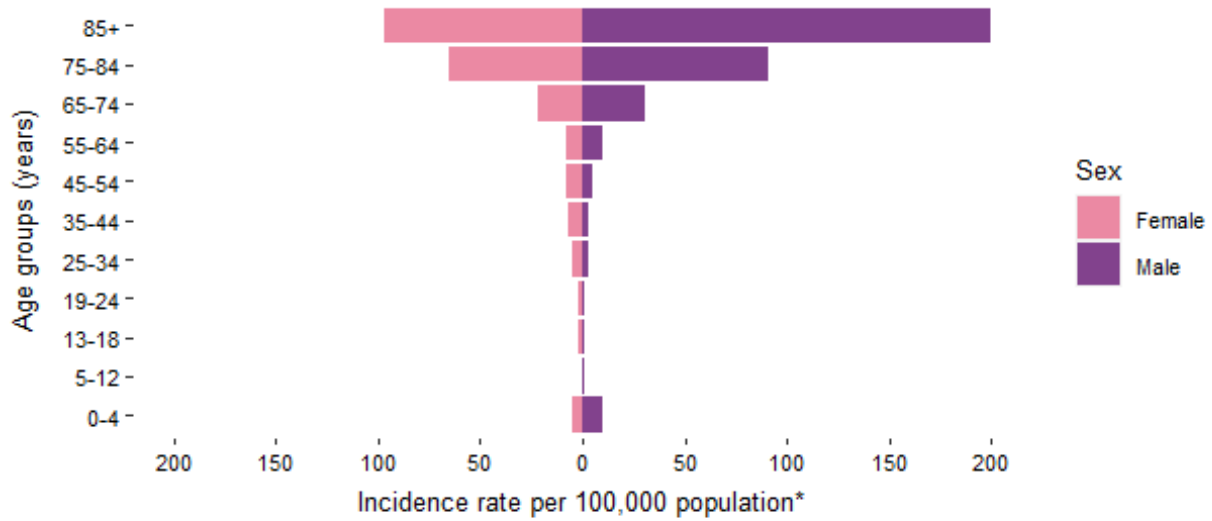


Figure 1b: Number of confirmed COVID-19 cases by notification week and epidemiological date in Ireland in the last 12 weeks. The red bars represent the number of confirmed cases by notification date. The purple line represents the number of cases by epidemiological date.

## Confirmed COVID-19 cases by age and sex

**Table 2:** Summary characteristics by age and sex of COVID-19 cases notified in Ireland during week 21, 2023 and 2023 to date

	Week 21, 2023		Total 2023	
	Number	Percentage	Number	Percentage
<b>Gender</b>				
Males	265	50.5	7,859	41.5
Females	258	49.1	11,051	58.4
M:F ratio	1.03		0.71	
<b>Age (years)</b>				
Mean age	64		56	
Median age	72		56	
Age range	0 - 95		0 - 103	
<b>Age groups (years)</b>				
0-4	25	4.8	609	3.2
5-12	3	0.6	196	1.0
13-18	6	1.1	259	1.4
19-24	7	1.3	696	3.7
25-34	27	5.1	2,135	11.3
35-44	36	6.9	2,661	14.1
45-54	38	7.2	2,464	13.0
55-64	44	8.4	2,289	12.1
65-74	98	18.7	2,285	12.1
75-84	151	28.8	3,022	16.0
85+	90	17.1	2,297	12.1
Unknown	NA	0.0	2	0.0



\*Excluding 0 for whom age is unknown, 0 for whom sex is unknown and 0 for whom both are unknown

Figure 2: Cumulative age and sex specific incidence rates of confirmed COVID-19 cases per 100,000 population for current week 21, 2023

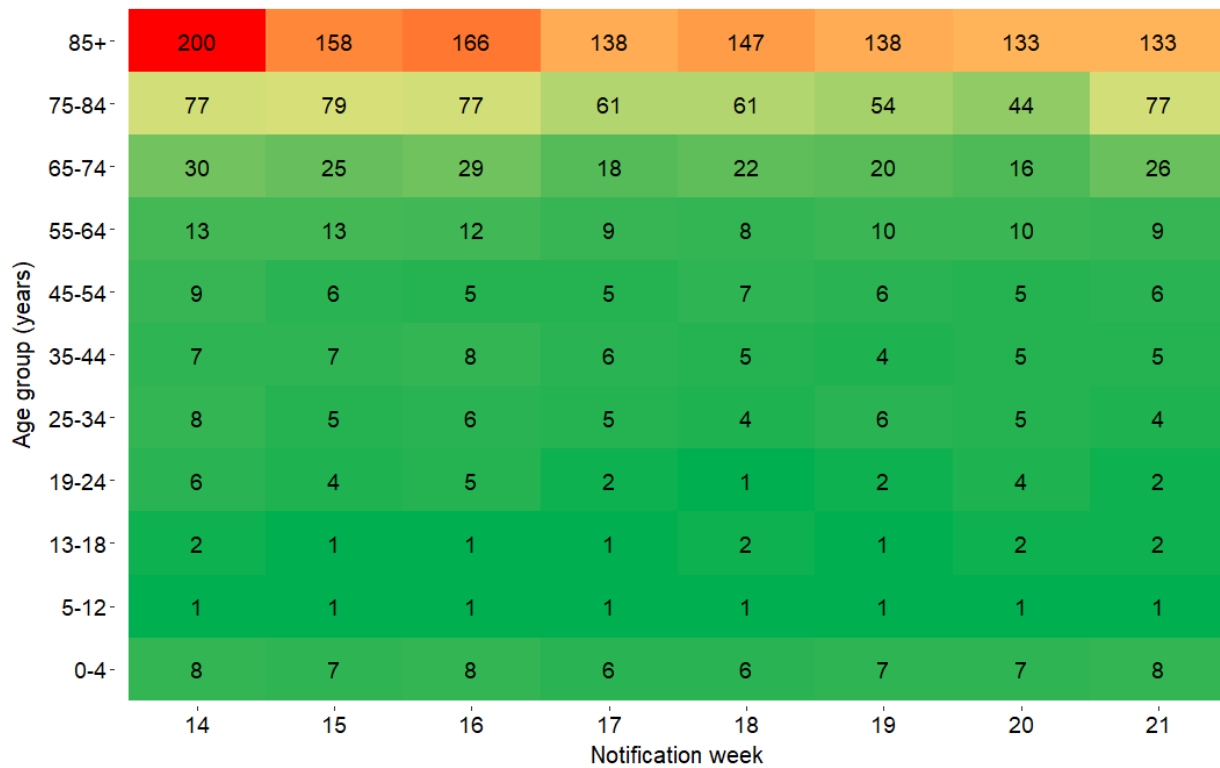


Figure 3: Heat map of weekly age-specific incidence rates of confirmed COVID-19 cases per 100,000 population in Ireland for the last 8 weeks

## Cases and incidence by county

**Table 3:** Characteristics of confirmed COVID-19 cases by county and descending incidence rate per 100,000 notified in Ireland, during week 21, 2023\*

County	Number of cases	Percent	Incidence rate per 100,000
Louth	35	6.7	27.2
Leitrim	7	1.3	21.8
Sligo	14	2.7	21.4
Offaly	15	2.9	19.2
Waterford	21	4.0	18.1
Mayo	22	4.2	16.9
Roscommon	10	1.9	15.5
Westmeath	13	2.5	14.6
Galway	34	6.5	13.2
Kildare	25	4.8	11.2
Kilkenny	11	2.1	11.1
Dublin	145	27.6	10.8
Kerry	16	3.0	10.8
Wexford	15	2.9	10.0
Limerick	19	3.6	9.7
Clare	11	2.1	9.3
Meath	18	3.4	9.2
Cork	48	9.1	8.8
Tipperary	14	2.7	8.8
Laois	7	1.3	8.3
Donegal	11	2.1	6.9
Cavan	5	1.0	6.6
Wicklow	6	1.1	4.2
Monaghan	2	0.4	3.3
Longford	1	0.2	2.4
Carlow	0	0.0	0.0

\* County data may not be accurately reflected in the most recent week due to ongoing data validations

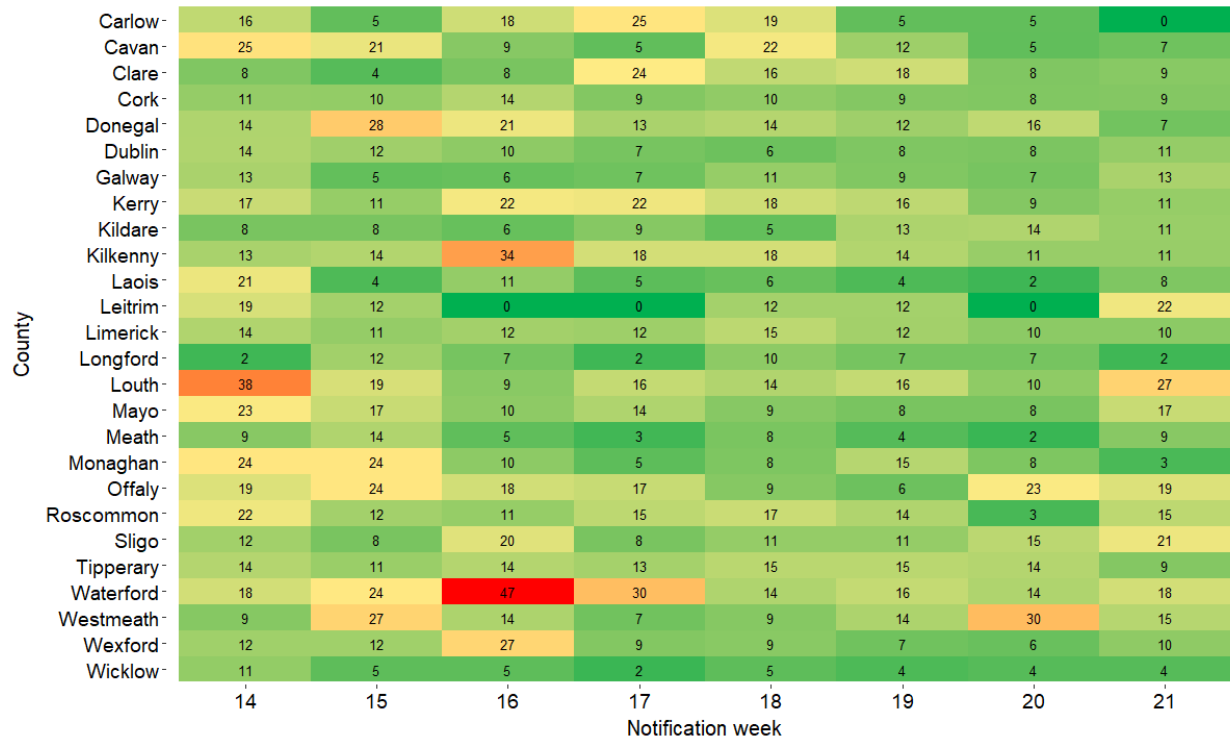


Figure 4: Heat map of weekly incidence rates of confirmed COVID-19 cases per 100,000 population, by county, notified in Ireland for the last 8 weeks



## Hospitalisations

A total of 299 hospitalised confirmed COVID-19 cases were recorded in the latest epidemiological week, week 21 2023.

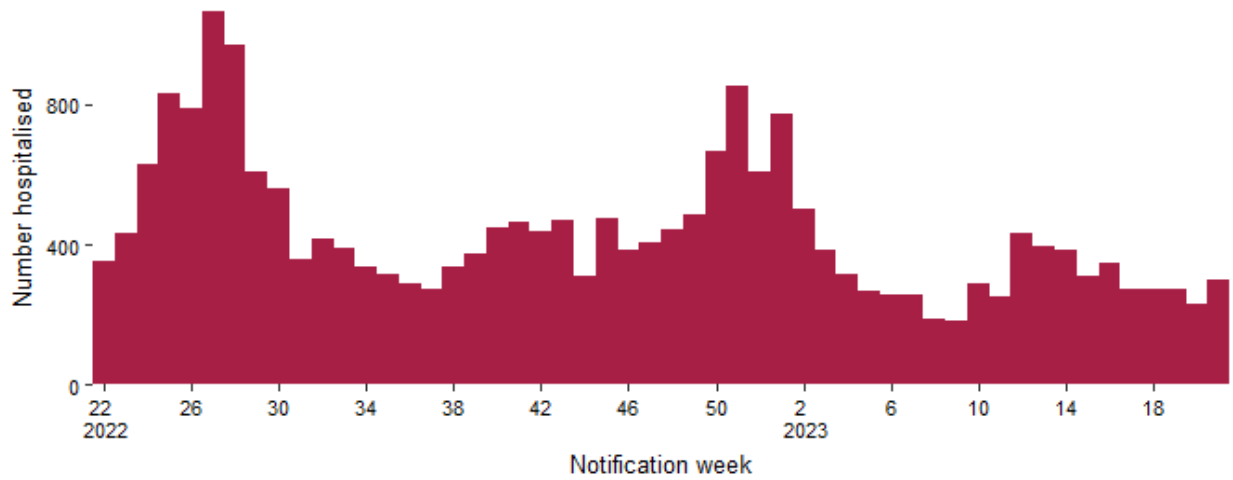


Figure 5: Hospitalisations among confirmed COVID-19 cases notified on CIDR in Ireland between week 22, 2022 and week 21, 2023

**Table 4:** Number of COVID-19 cases and hospital admissions by age group in Ireland for week<sup>3</sup> 21, 2023 based on week of notification<sup>4</sup>

Age group	Week 21, 2023			Total 2023		
	Total cases	Hospitalised cases		Total cases	Hospitalised cases	
	Number of cases	Number of cases	Percentage	Number of cases	Number of cases	Percentage
0-4	25	13	52.0	609	327	53.7
5-12	3	3	100.0	196	60	30.6
13-18	6	2	33.3	259	66	25.5
19-24	7	3	42.9	696	113	16.2
25-34	27	8	29.6	2,135	279	13.1
35-44	36	12	33.3	2,661	334	12.6
45-54	38	10	26.3	2,464	394	16.0
55-64	44	27	61.4	2,289	664	29.0
65-74	98	61	62.2	2,285	1,334	58.4
75-84	151	110	72.8	3,022	1,974	65.3
85+	90	50	55.6	2,297	1,353	58.9
Unknown	0	0	0.0	2	0	0.0

<sup>3</sup> Hospitalisations may be underestimated for recent weeks as the outcome may not yet have occurred or may not yet have been reported to CIDR

<sup>4</sup> Data are based on the date the case was notified on CIDR, and not the date of hospital admission

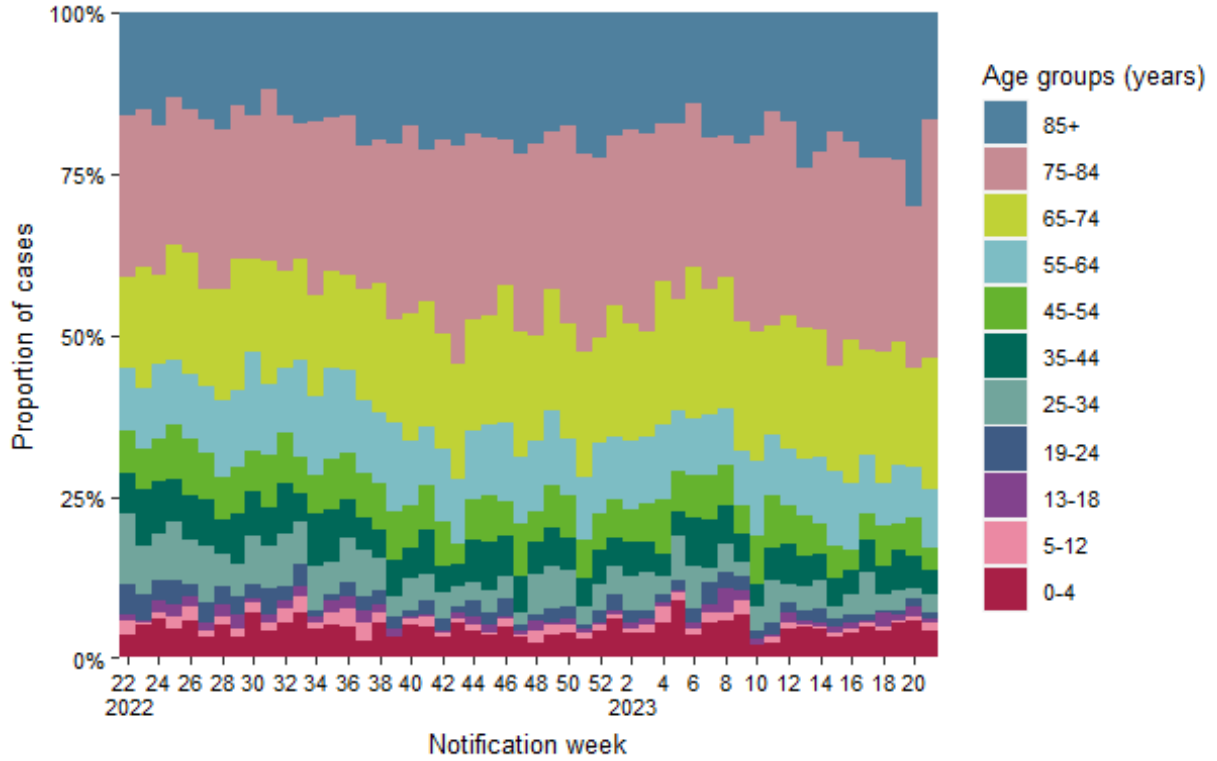


Figure 6: Age distribution of hospitalised confirmed COVID-19 cases notified on CIDR in Ireland between week 22, 2022 and week 21, 2023

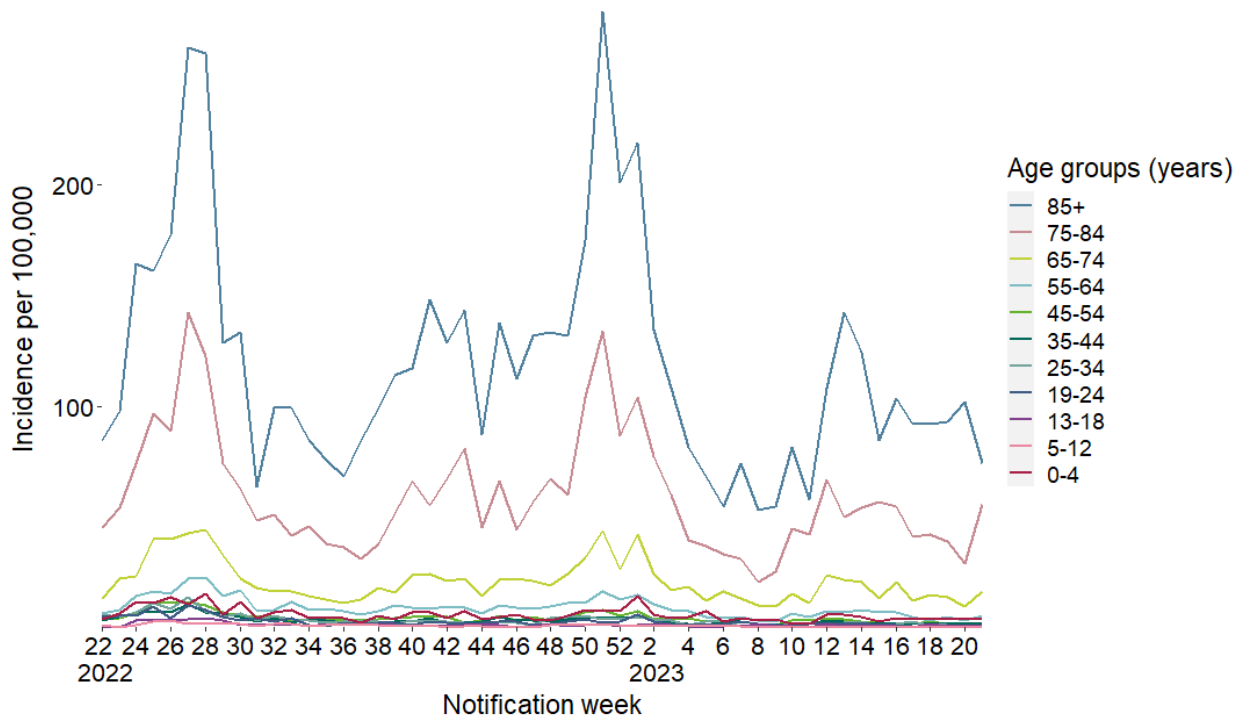


Figure 7: Incidence rate by age group of hospitalisations among confirmed COVID-19 cases on CIDR in Ireland between week 22, 2022 and week 21, 2023

## ICU admissions

A total of 4 COVID-19 cases were admitted to ICU in the latest epidemiological week<sup>5</sup>, week 21 2023.

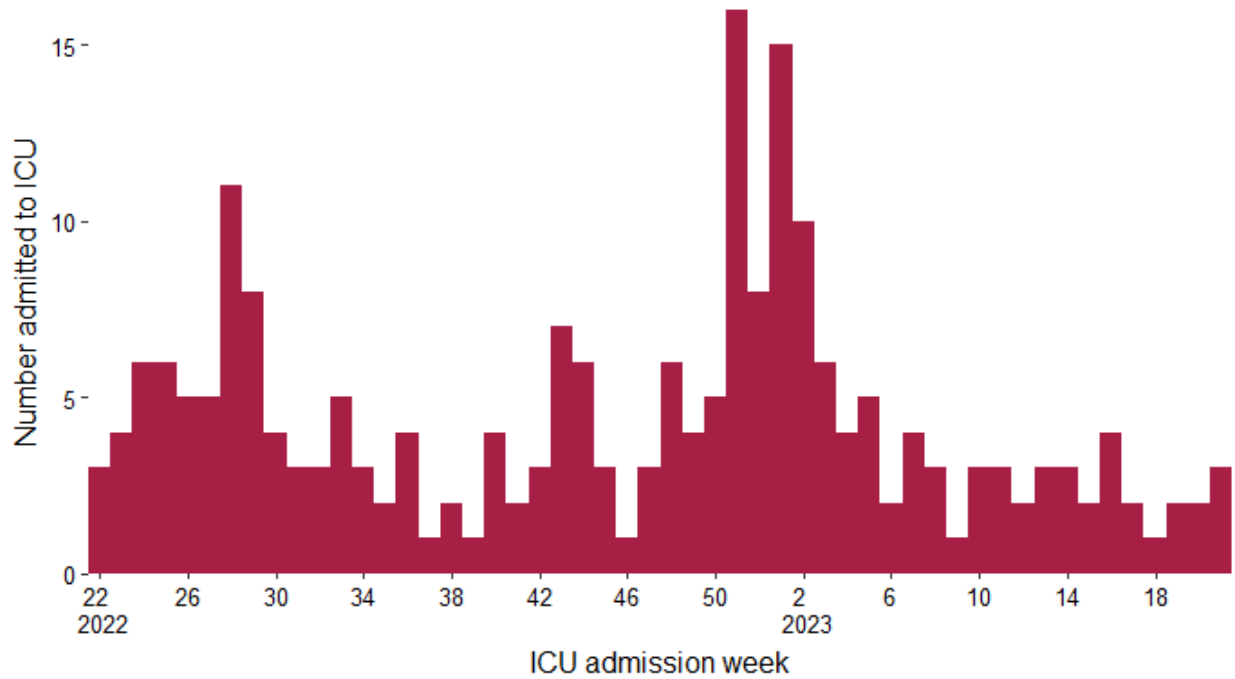


Figure 8: Number of ICU COVID-19 ICU admissions in Ireland by week of ICU admission, between week 22, 2022 and week 21, 2023<sup>6</sup>

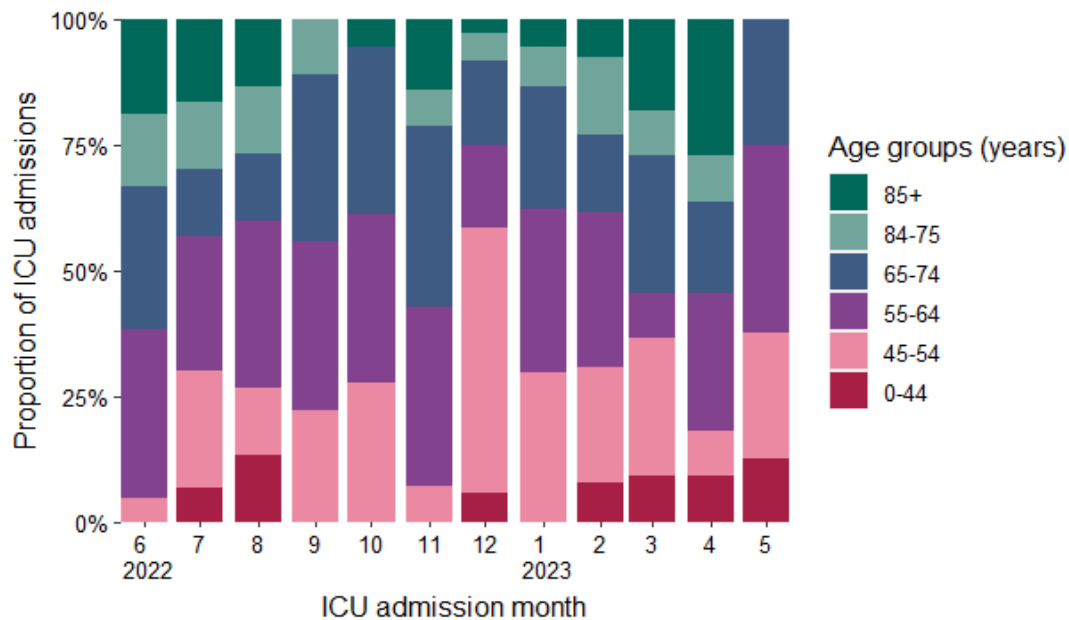


Figure 9: Age distribution of confirmed COVID-19 cases admitted to ICU by month of admission June, 2022 and May, 2023

<sup>5</sup> Please note that most recent weeks may not yet reflect all admissions

<sup>6</sup> Please note that most recent weeks may not yet reflect all admissions

## Deaths

Please note the below figures and tables include all cases (confirmed, probable and possible) who have died.

A total of one case had a date of death in the latest epidemiological week, 21. Both the mean and median age of those who died in the previous epidemiological week was 86 years r.

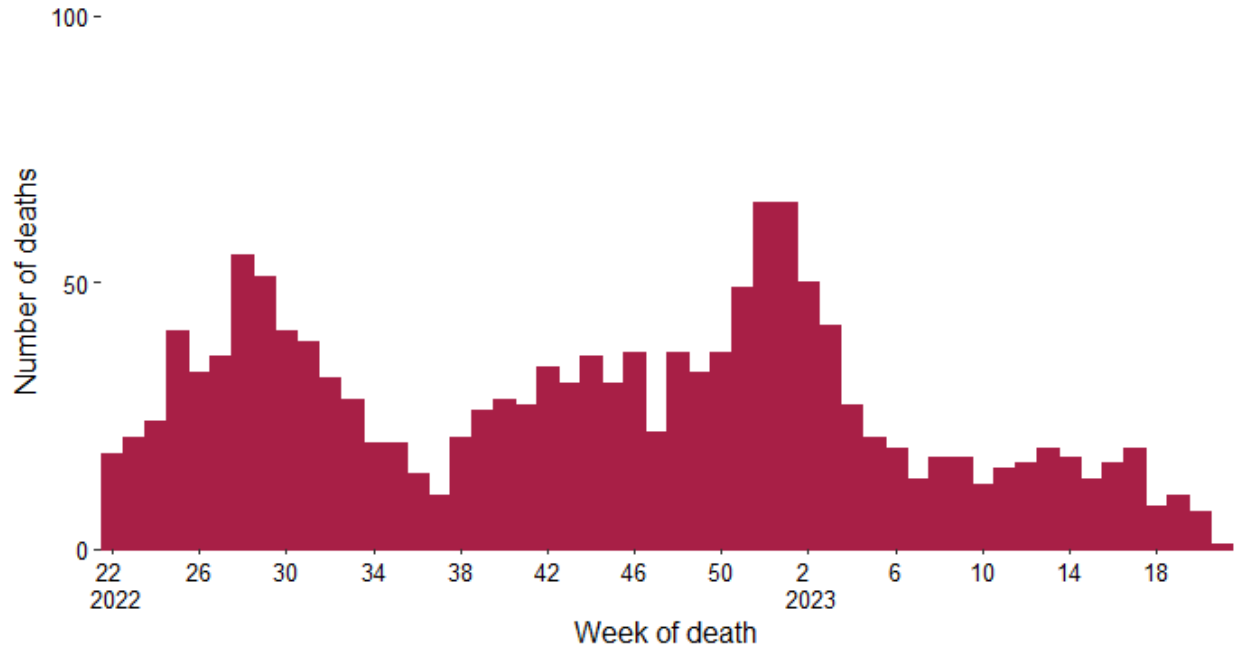


Figure 10: Total number of COVID-19 deaths notified by week of death, cases with a date of notification from weeks 22, 2022 to 21, 2023<sup>7</sup>. Date of death missing for none of the reported deaths

<sup>7</sup> Please note that most recent weeks may not yet reflect all deaths

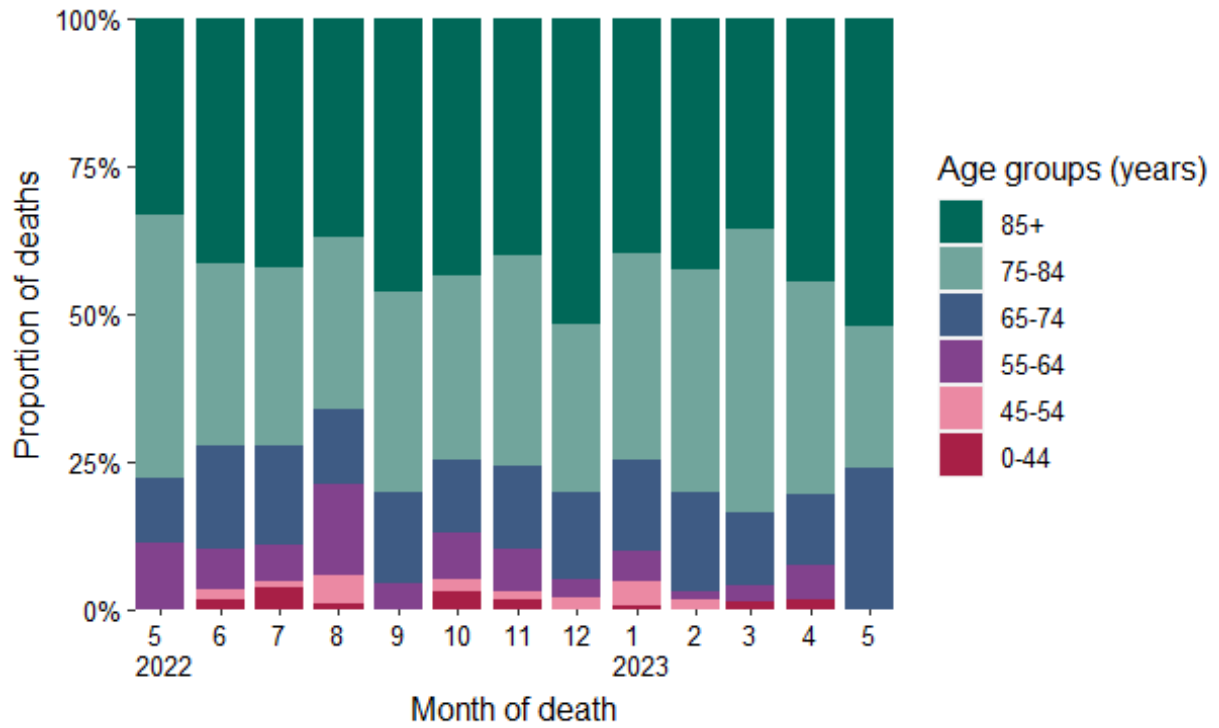


Figure 11: Age distribution of COVID-19 deaths notified on CIDR in Ireland between May, 2022 and May, 2023

## Laboratory data of SARS-CoV-2 PCR tests

In week 21, a total of 4,345 SARS-CoV-2 tests were performed, of which 456 (10.5%) were positive.

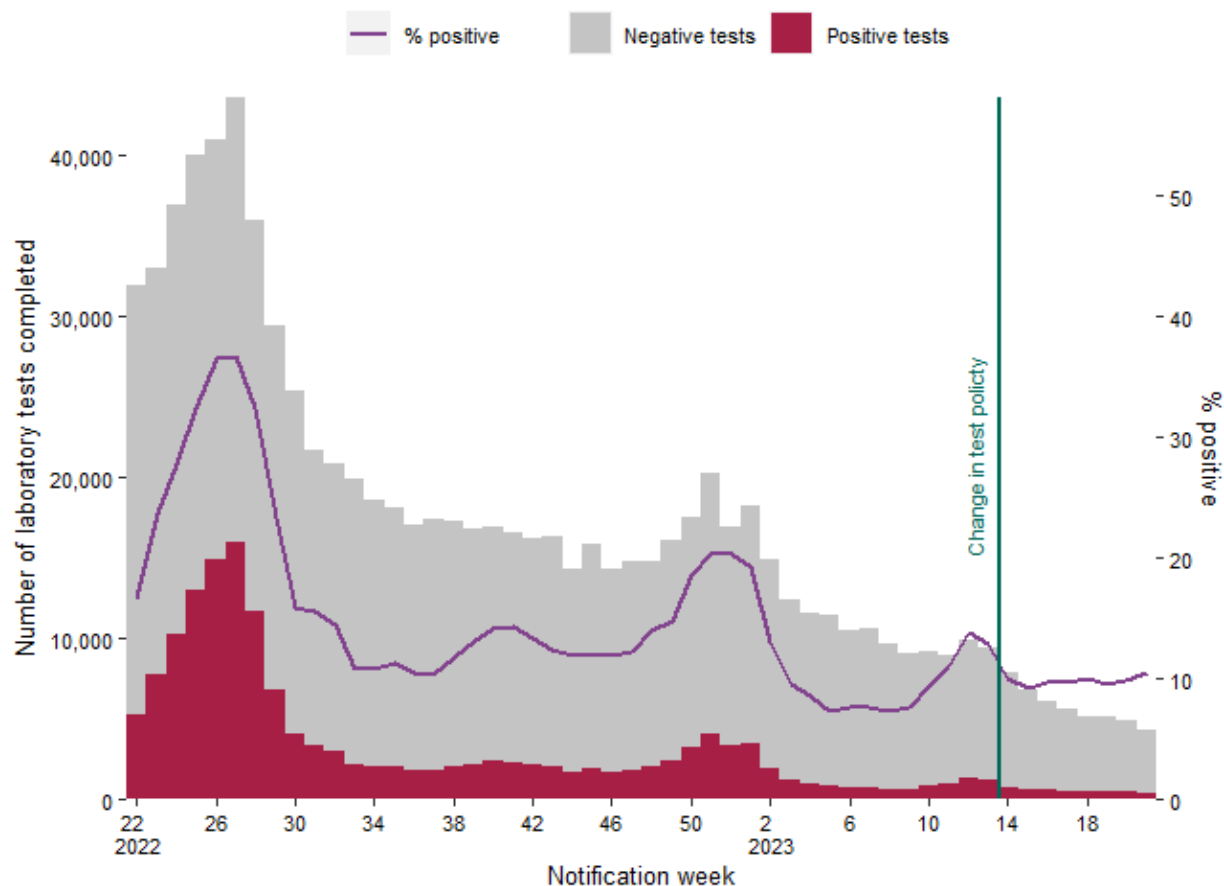


Figure 12: Number of completed laboratory tests by result and % positive tests<sup>8</sup> in Ireland between week 22, 2022 and week 21, 2023. Data source: Deloitte Ireland LLP<sup>9 10</sup>

<sup>8</sup> Positive tests refer to all positive specimens and includes duplicates and individuals who were retested.

<sup>9</sup> Since 28/02/2022 (week 9), PCR testing is only needed for symptomatic people in the community within certain risk groups: those who have not had booster vaccination and are aged 55 years and older; those with a high-risk medical conditions; those who are immunocompromised; those who live in the same household as a person who is immunocompromised; those who provide care or support for person they know to be immunocompromised; those who are pregnant; Healthcare Workers.

<sup>10</sup> Since 30/03/2023 (week 13, 2023), community test centres closed and PCR testing was only performed based on clinical assessment.

## Notes

### Technical Notes

#### 1. Data Source

Data are based on statutory notifications and were extracted from Computerised Infectious Disease Reporting (CIDR) system and the HSE COVID care tracker. Data are provisional and subject to ongoing review, validation and update. As a result, figures in this report may differ from previously published figures. Slide with Laboratory testing for SARS-CoV-2 data provided by Deloitte Ireland LLP

#### 2. Epidemiological date

Epidemiological date is based on the earliest of dates available on the case and taken from date of onset of symptoms, date of diagnosis, laboratory specimen collection date, laboratory received date, laboratory reported date or event creation date/notification date on CIDR. By using this date rather than event creation/ notification date, adjusts for any delays in testing/notification. Further information on epidemiological dates and weeks can be found on the [HPSC website](#).

#### 3. Population data

Population data were taken from Census 2016. Data were aggregated into the following age groups for the analysis: 0-4 years, 5-12 years, 13-18 years, 19-24 years, 25-34 years, 35-44 years, 45-54 years, 55-64 years, 65-74 years, 75-84 years and  $\geq 85$  years.

### Acknowledgements

Sincere thanks are extended to all those who are participating in the collection of data and reporting of data used in these reports. This includes the HSE COVID-19 Contact Management Programme (CMP), staff in ICU units, notifying clinicians, laboratory staff, public health doctors, nurses, surveillance scientists, microbiologists and administrative staff.

### Please refer to the Health Protection Surveillance (HPSC) website for

- [Epidemiology of COVID-19 in Ireland infohub](#)
- [Outbreaks/clusters in Ireland COVID-19 weekly report](#)
- [Monthly report on COVID-19 deaths reported in Ireland](#)
- [SARS-CoV-2 wastewater surveillance programme weekly reports](#)
- [Virus variants in Ireland COVID-19 summary report](#)
- [Epidemiology of intensive care admissions in cases of COVID-19 in Ireland](#)