



# Weekly report on the epidemiology of COVID-19 in Ireland

## Week 19, 2023

- The epidemiological weeks in this report, run from Sunday to Saturday. Please refer to the [HPSC website](#) for a complete list of epidemiological weeks with start and end dates for 2020-2023.
- Data for this report are based on cases notified on the Computerised Infectious Disease Reporting (CIDR) up to midnight 13/05/2023. Data were extracted from CIDR system on 16/05/2023. Data are provisional and subject to ongoing review, validation and update. As a result, figures in this report may differ from previously published figures.
- Data should be interpreted in the context of the current testing policy. Testing policies can affect the number and age distribution of confirmed cases notified on CIDR. Information on the current testing policy in Ireland can be found [here](#)

## Key points

### Notified confirmed cases

- In week 19 (between May 07 and May 13 2023) there were 474 new confirmed COVID-19 cases reported on CIDR. This is stable compared to week 18 when there were 483 confirmed COVID-19 cases notified.
- The highest number of new confirmed COVID-19 cases in week 19 was in the age group of 75-84 years with 22.4% of notified cases in week 19.

### Laboratory data of SARS-CoV-2 PCR tests

- In week 19, a total of 5,015 SARS-CoV-2 tests were performed, of which 476 (9.5%) were positive. This is stable compared to the previous week, 18, when 10.1% were positive.

### Deaths

- Since the start of the pandemic 8,935 COVID-19 deaths among notified COVID-19 cases have been reported on CIDR. Of these, 0 had a date of death in week 19.

**Table 1:** Summary characteristics of COVID-19 cases notified in Ireland during week 19, 2023 and 2023 to date

	Week 19, 2023		Total 2023	
	Number	Percentage	Number	Percentage
Total number of confirmed cases	474		17,954	
Incidence rate of confirmed cases per 100,000 population	10		377	
<b>Severe cases</b>				
Number of cases hospitalised	272*	57.38	6,364*	35.45
Number of cases admitted to ICU	1*	0.21	73*	0.41
Number of deaths among confirmed cases	4*	0.84	313*	1.74

*\* The number of cases hospitalised, cases admitted to ICU and deaths described in the above table relate only to COVID-19 cases who were notified during this reporting period, and where the outcome is known at the time of reporting. It does not reflect all hospitalisations, ICU admissions and deaths related to COVID-19 which occurred during the period covered by the report. It also does not reflect the final number of cases hospitalised, admitted to ICU or deaths for these cases notified during this period as the outcome may not yet have occurred, or is yet to be notified*

## Confirmed cases of COVID-19

Since the start of 2023, 17,954 confirmed COVID-19 cases have been notified on CIDR. In the past week, week 19 2023, 474 confirmed COVID-19 cases were reported on CIDR. This is a decrease of 1.9% compared to week 18 when 483 confirmed COVID-19 cases were notified. Figure 1 shows the epidemiological curve of COVID-19 cases notified in Ireland from week 1 2022 to week 19 2023. Data since the start of the pandemic is available on the [Epidemiology of COVID-19 in Ireland infohub](#).

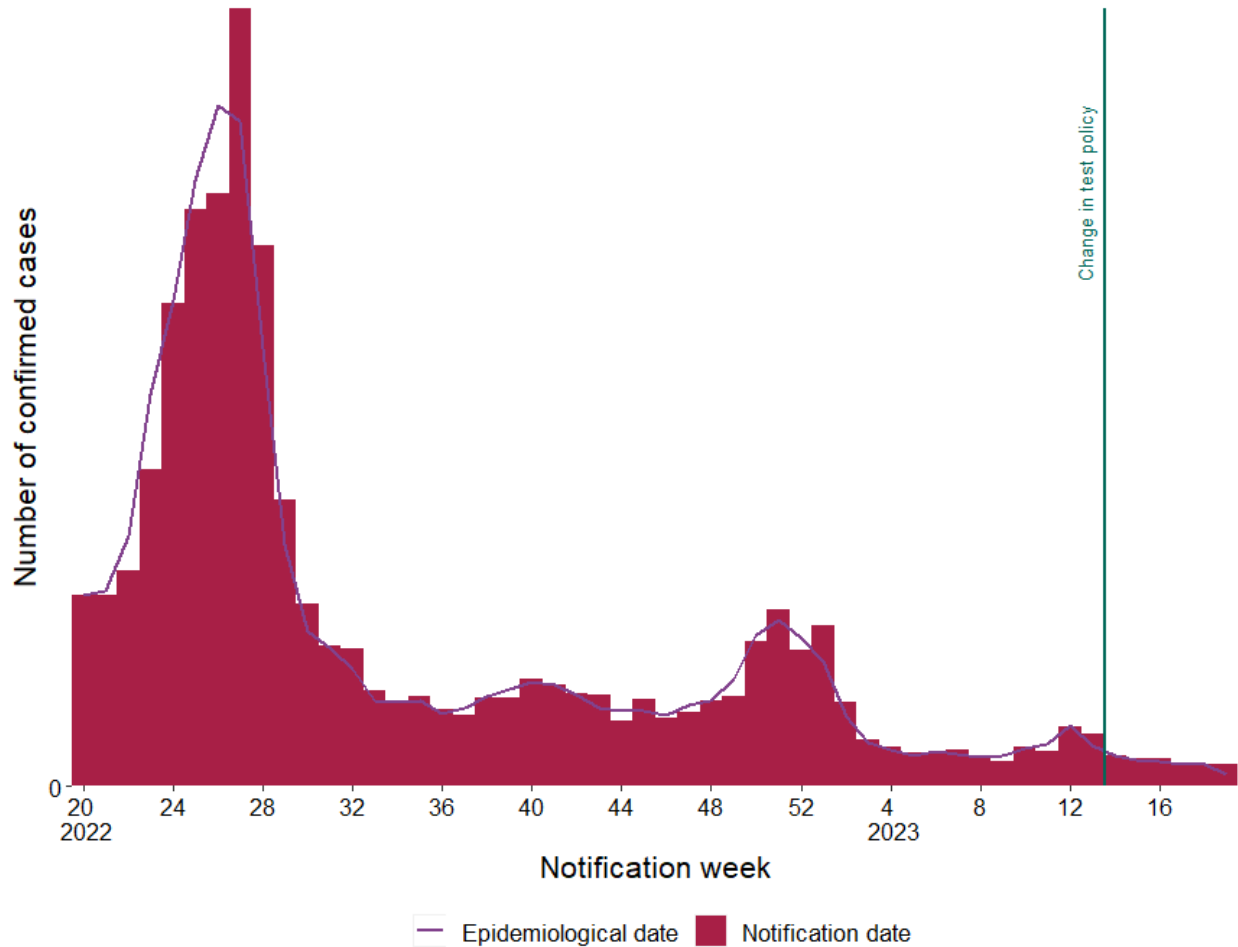


Figure 1a: Number of confirmed COVID-19 cases by notification week and epidemiological date in Ireland between week 20, 2022 and week 19, 2023. The red bars represent the number of confirmed cases by notification date. The purple line represents the number of cases by epidemiological date. The dark blue horizontal lines indicate a change in test policy<sup>1 2</sup>

<sup>1</sup> Since 28/02/2022 (week 9, 2022), PCR testing was only needed for symptomatic people in the community within certain risk groups: those who have not had booster vaccination and are aged 55 years and older; those with a high-risk medical conditions; those who are immunocompromised; those who live in the same household as a person who is immunocompromised; those who provide care or support for person they know to be immunocompromised; those who are pregnant; Healthcare Workers.

<sup>2</sup> Since 30/03/2023 (week 13, 2023), community test centres closed and PCR testing was only performed based on clinical assessment.

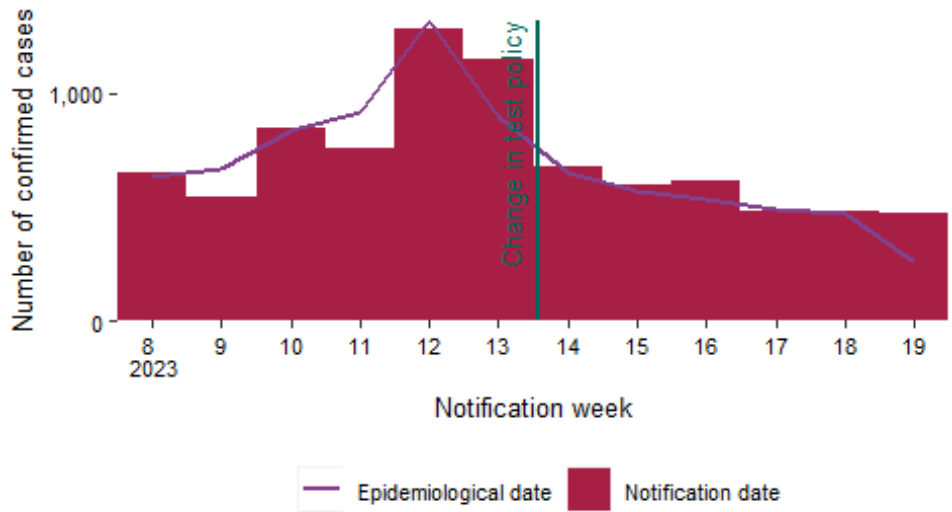
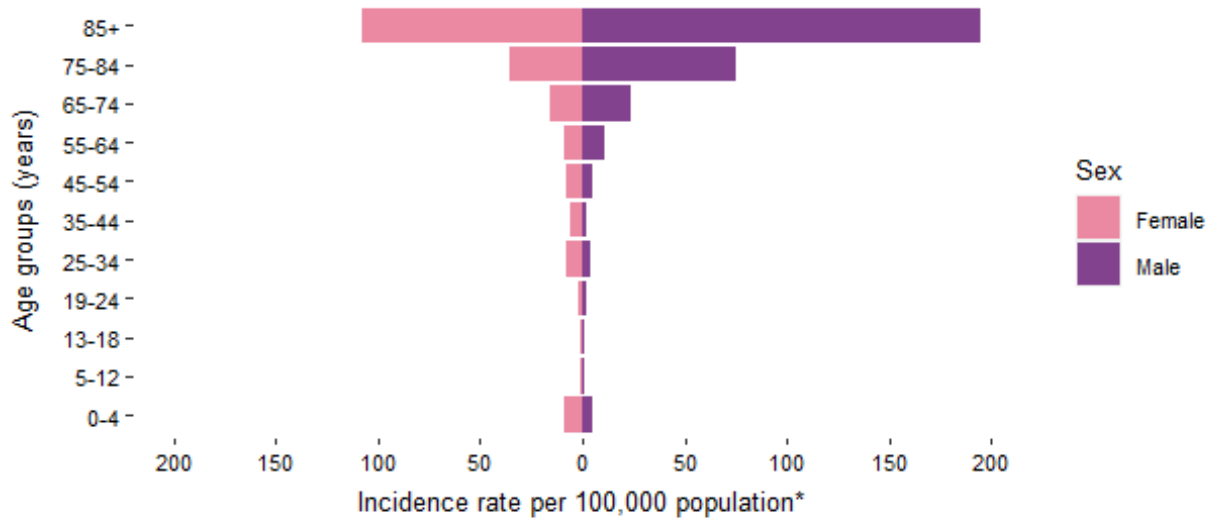


Figure 1b: Number of confirmed COVID-19 cases by notification week and epidemiological date in Ireland in the last 12 weeks. The red bars represent the number of confirmed cases by notification date. The purple line represents the number of cases by epidemiological date.

## Confirmed COVID-19 cases by age and sex

**Table 2:** Summary characteristics by age and sex of COVID-19 cases notified in Ireland during week 19, 2023 and 2023 to date

	Week 19, 2023		Total 2023	
	Number	Percentage	Number	Percentage
<b>Gender</b>				
Males	235	49.6	7,387	41.1
Females	233	49.2	10,558	58.8
M:F ratio	1.01		0.7	
<b>Age (years)</b>				
Mean age	63		55	
Median age	71		56	
Age range	0 - 103		0 - 103	
<b>Age groups (years)</b>				
0-4	23	4.9	561	3.1
5-12	4	0.8	187	1.0
13-18	3	0.6	247	1.4
19-24	7	1.5	676	3.8
25-34	41	8.6	2,076	11.6
35-44	32	6.8	2,585	14.4
45-54	40	8.4	2,394	13.3
55-64	51	10.8	2,196	12.2
65-74	74	15.6	2,128	11.9
75-84	106	22.4	2,784	15.5
85+	93	19.6	2,117	11.8
Unknown	NA	0.0	3	0.0



\*Excluding 0 for whom age is unknown, 5 for whom sex is unknown and 0 for whom both are unknown

Figure 2: Cumulative age and sex specific incidence rates of confirmed COVID-19 cases per 100,000 population for current week 19, 2023

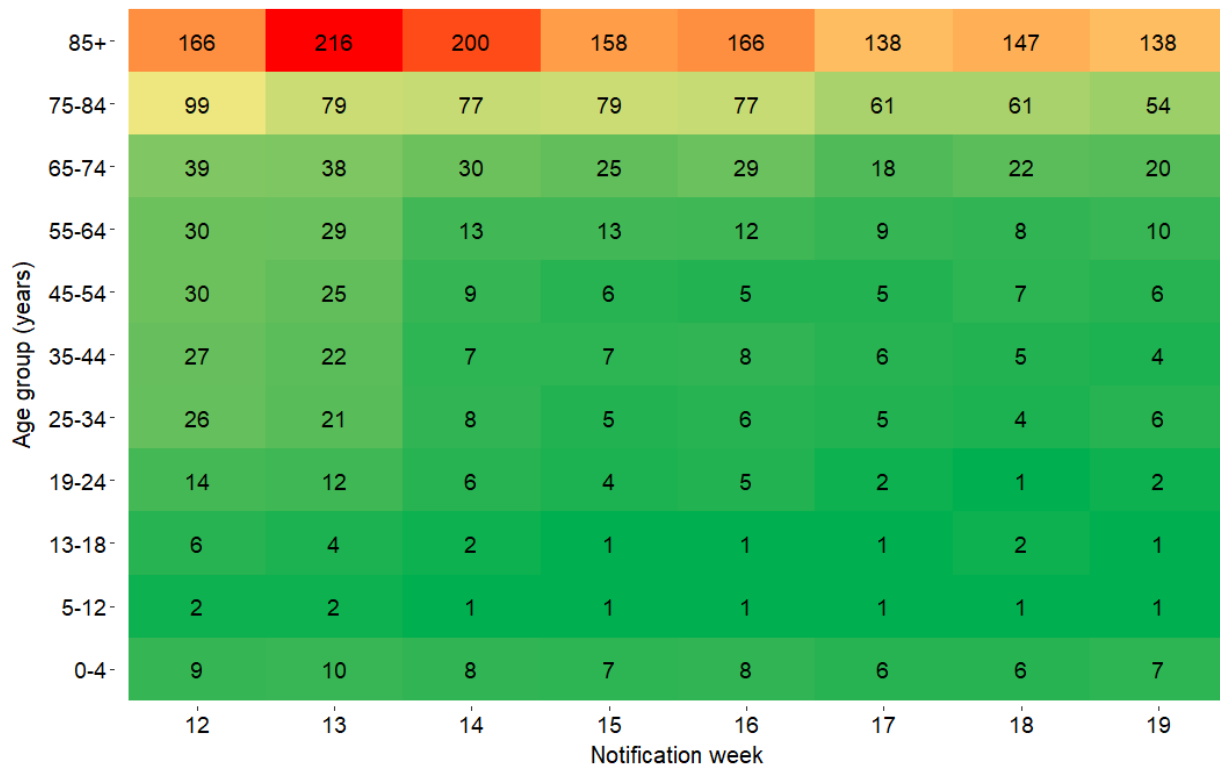


Figure 3: Heat map of weekly age-specific incidence rates of confirmed COVID-19 cases per 100,000 population in Ireland for the last 8 weeks

## Cases and incidence by county

**Table 3:** Characteristics of confirmed COVID-19 cases by county and descending incidence rate per 100,000 notified in Ireland, during week 19, 2023\*

County	Number of cases	Percent	Incidence rate per 100,000
Clare	21	4.4	17.7
Louth	21	4.4	16.3
Kerry	23	4.9	15.6
Waterford	18	3.8	15.5
Tipperary	24	5.1	15.0
Kilkenny	14	3.0	14.1
Roscommon	9	1.9	13.9
Kildare	30	6.3	13.5
Cavan	10	2.1	13.1
Monaghan	8	1.7	13.0
Leitrim	4	0.8	12.5
Westmeath	11	2.3	12.4
Limerick	24	5.1	12.3
Donegal	19	4.0	11.9
Sligo	7	1.5	10.7
Cork	48	10.1	8.8
Galway	22	4.6	8.5
Dublin	113	23.8	8.4
Mayo	10	2.1	7.7
Longford	3	0.6	7.3
Wexford	10	2.1	6.7
Offaly	5	1.1	6.4
Carlow	3	0.6	5.3
Wicklow	6	1.3	4.2
Meath	8	1.7	4.1
Laois	3	0.6	3.5

\* County data may not be accurately reflected in the most recent week due to ongoing data validations

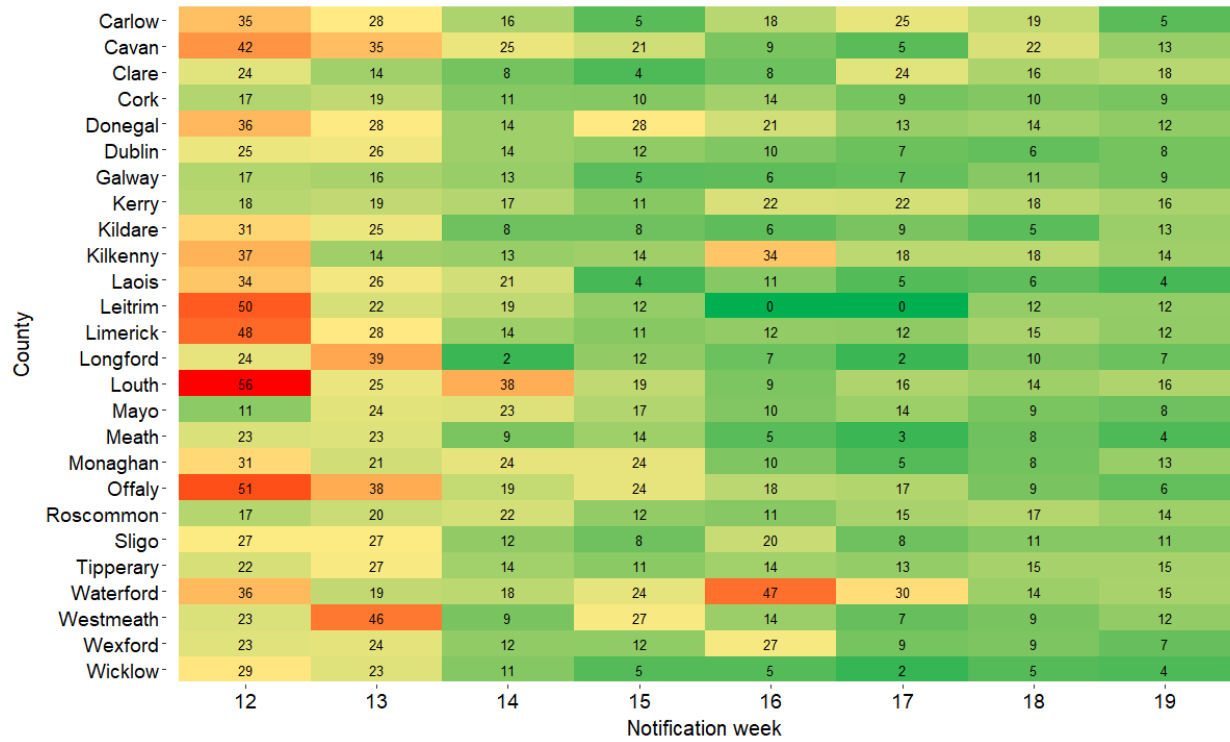


Figure 4: Heat map of weekly incidence rates of confirmed COVID-19 cases per 100,000 population, by county, notified in Ireland for the last 8 weeks



## Hospitalisations

A total of 272 hospitalised confirmed COVID-19 cases were recorded in the latest epidemiological week, week 19 2023.

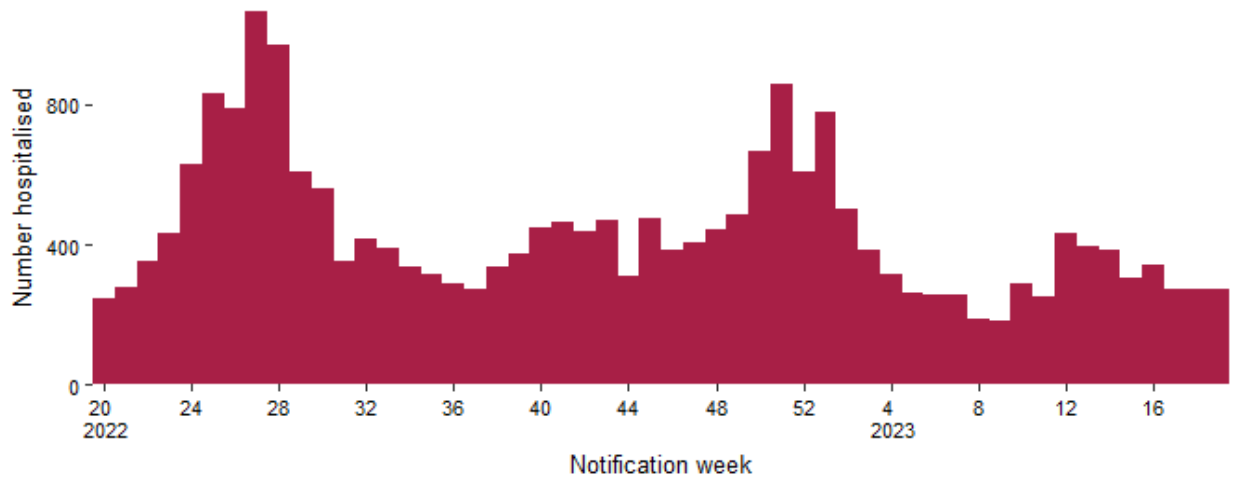


Figure 5: Hospitalisations among confirmed COVID-19 cases notified on CIDR in Ireland between week 20, 2022 and week 19, 2023

**Table 4:** Number of COVID-19 cases and hospital admissions by age group in Ireland for week<sup>3</sup> 19, 2023 based on week of notification<sup>4</sup>

Age group	Week 19, 2023			Total 2023		
	Total cases	Hospitalised cases		Total cases	Hospitalised cases	
	Number of cases	Number of cases	Percentage	Number of cases	Number of cases	Percentage
0-4	23	15	65.2	561	301	53.7
5-12	4	1	25.0	187	57	30.5
13-18	3	2	66.7	247	61	24.7
19-24	7	2	28.6	676	107	15.8
25-34	41	9	22.0	2,076	267	12.9
35-44	32	17	53.1	2,585	309	12.0
45-54	40	11	27.5	2,394	371	15.5
55-64	51	25	49.0	2,196	617	28.1
65-74	74	53	71.6	2,128	1,239	58.2
75-84	106	75	70.8	2,784	1,804	64.8
85+	93	62	66.7	2,117	1,231	58.1
Unknown	0	0	0.0	3	0	0.0

<sup>3</sup> Hospitalisations may be underestimated for recent weeks as the outcome may not yet have occurred or may not yet have been reported to CIDR

<sup>4</sup> Data are based on the date the case was notified on CIDR, and not the date of hospital admission

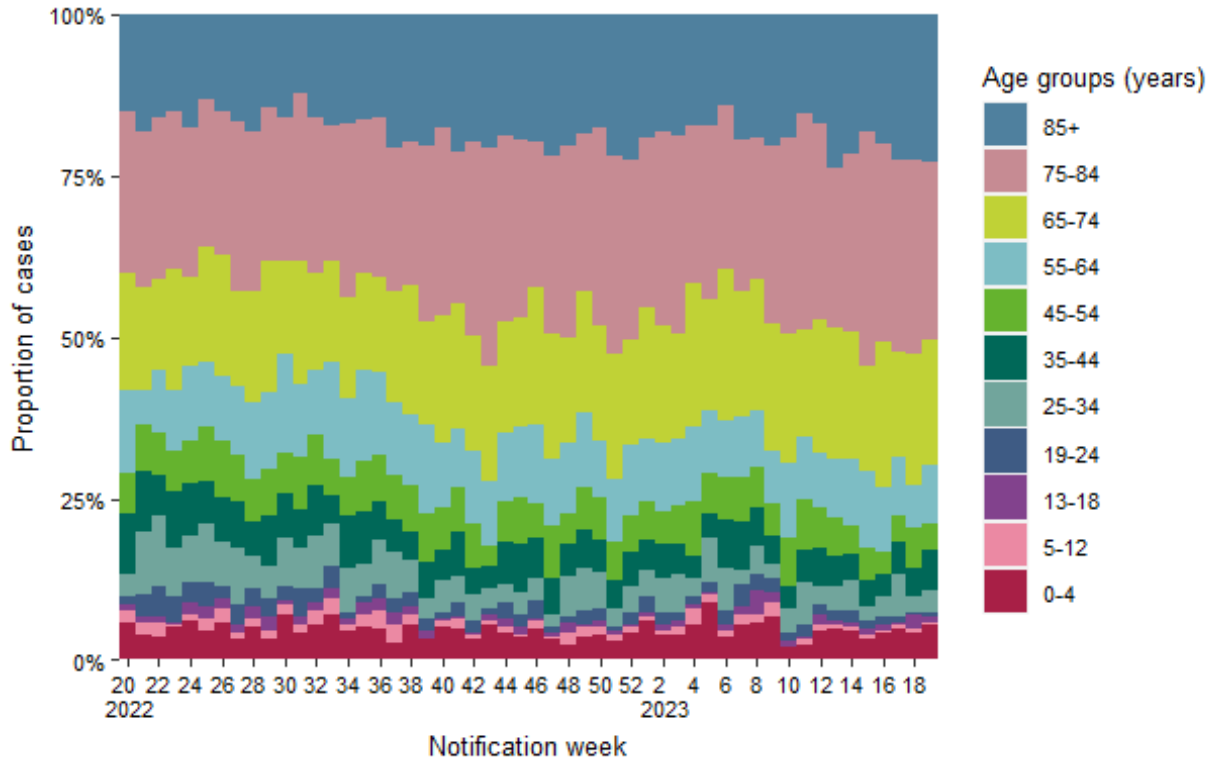


Figure 6: Age distribution of hospitalised confirmed COVID-19 cases notified on CIDR in Ireland between week 20, 2022 and week 19, 2023

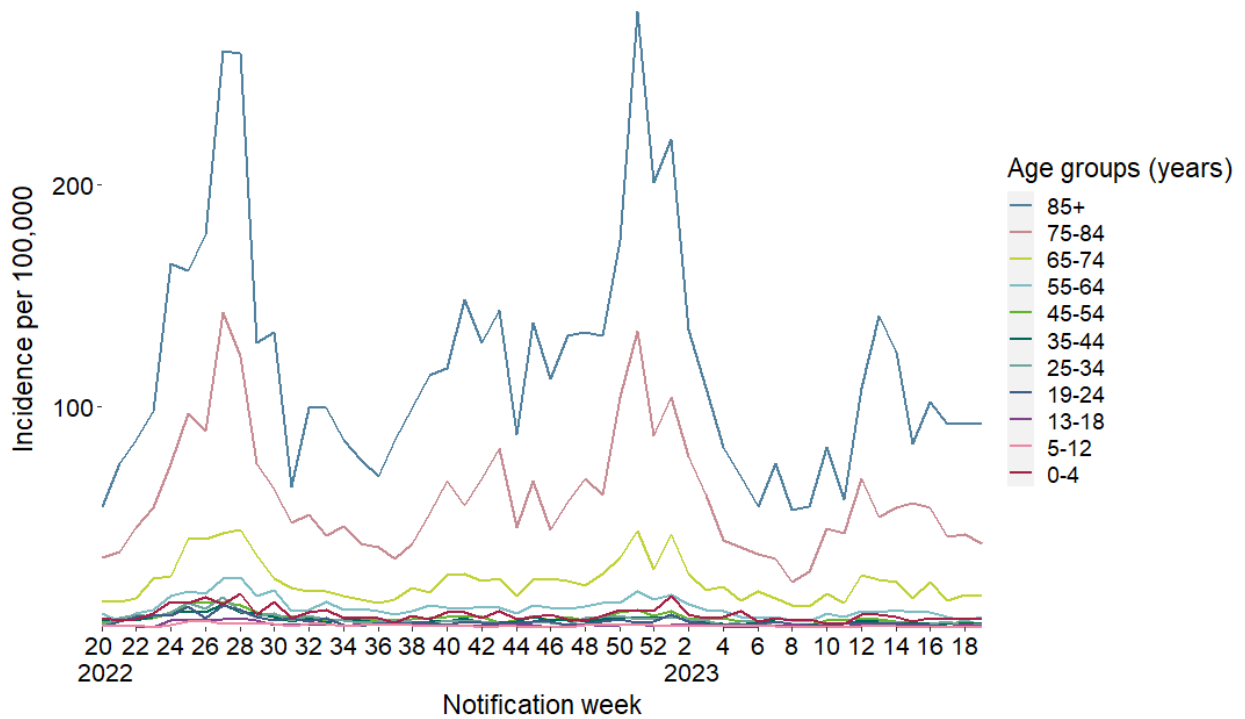


Figure 7: Incidence rate by age group of hospitalisations among confirmed COVID-19 cases on CIDR in Ireland between week 20, 2022 and week 19, 2023

## ICU admissions

A total of 1 COVID-19 cases were admitted to ICU in the latest epidemiological week<sup>6</sup>, week 19 2023.

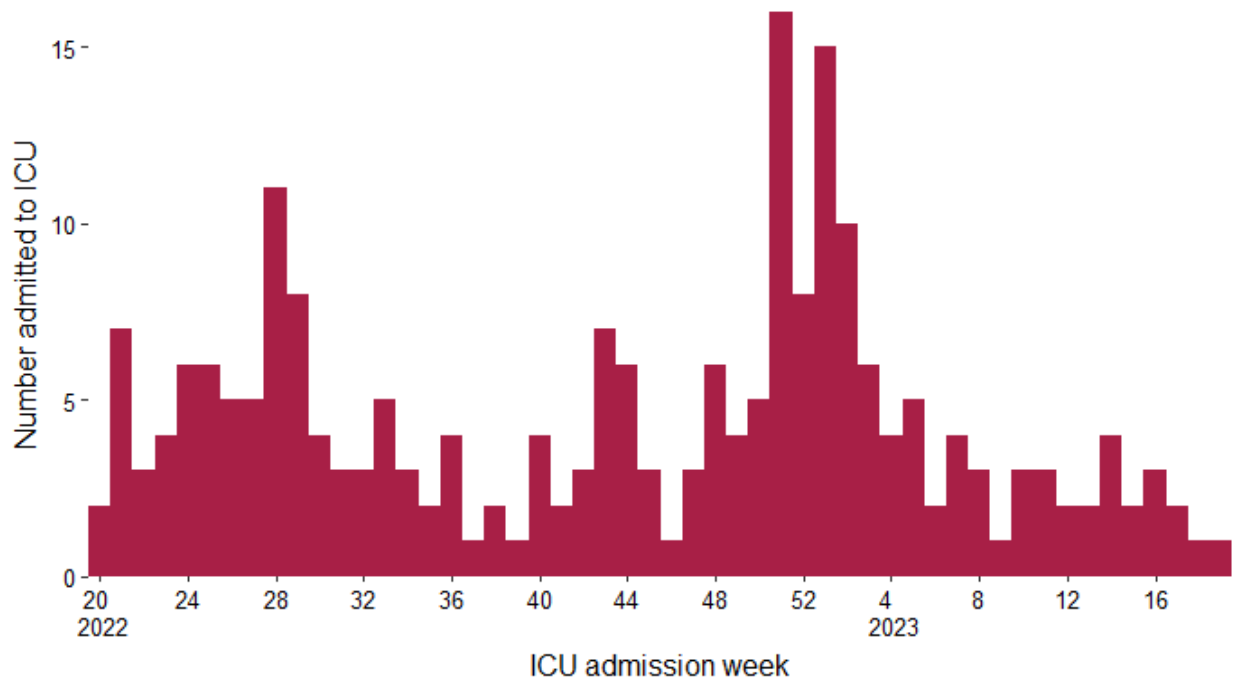


Figure 8: Number of ICU COVID-19 ICU admissions in Ireland by week of ICU admission, between week 20, 2022 and week 19, 2023<sup>5</sup>

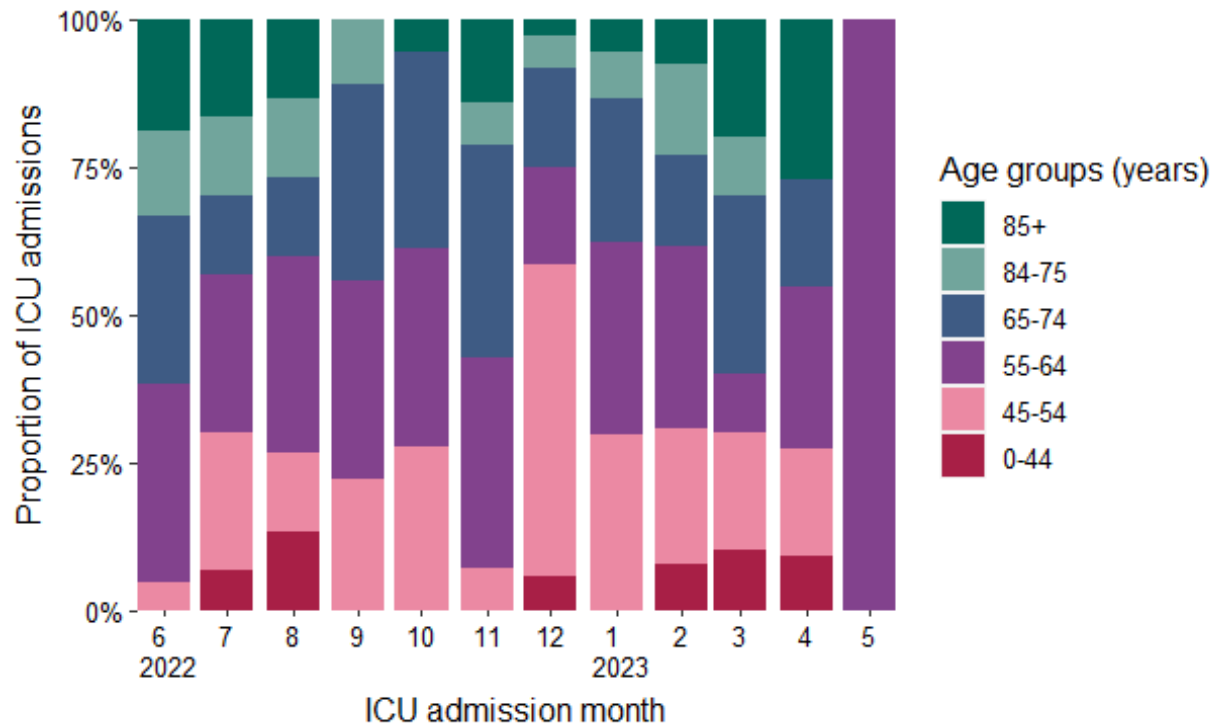


Figure 9: Age distribution of confirmed COVID-19 cases admitted to ICU by month of admission June, 2022 and May, 2023

<sup>5</sup> Please note that most recent weeks may not yet reflect all admissions



## Deaths

Please note the below figures and tables include all cases (confirmed, probable and possible) who have died.

A total of 0 cases had a date of death in the latest epidemiological week, 19. The mean and median age of those who died in the previous epidemiological week was NaN and NA years respectively.

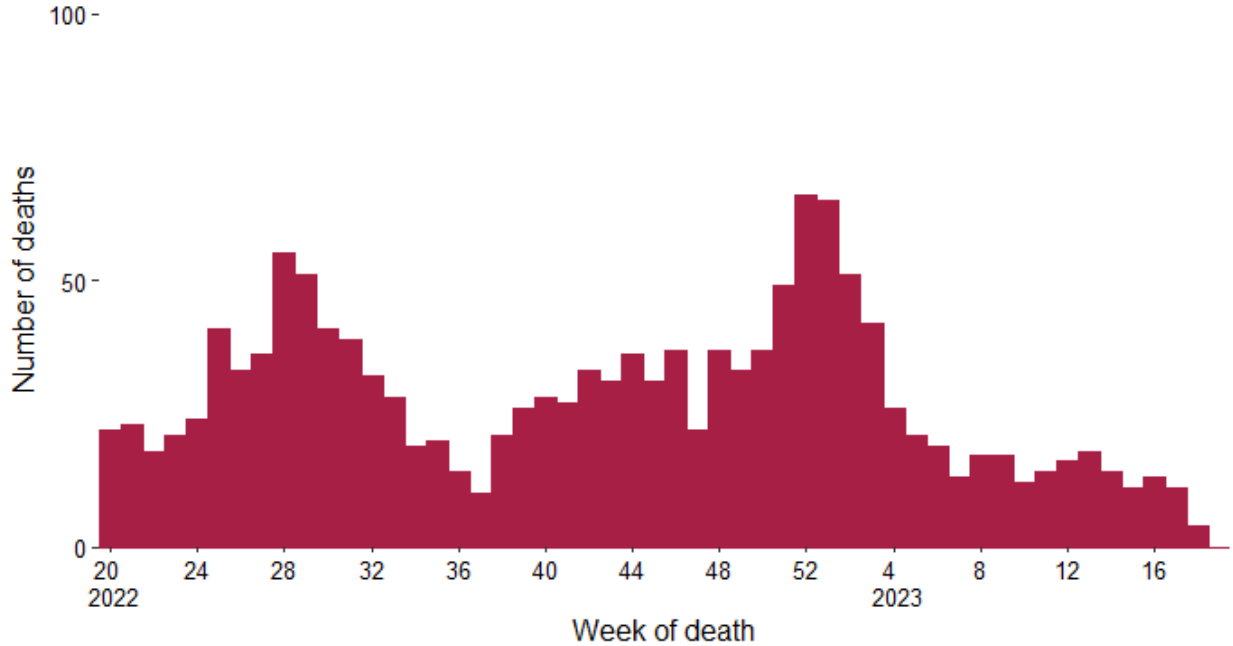


Figure 10: Total number of COVID-19 deaths notified by week of death, cases with a date of notification from week 20, 2022 to 19, 2023<sup>6</sup>. Date of death missing for 0 of the reported deaths

<sup>6</sup> Please note that most recent weeks may not yet reflect all deaths

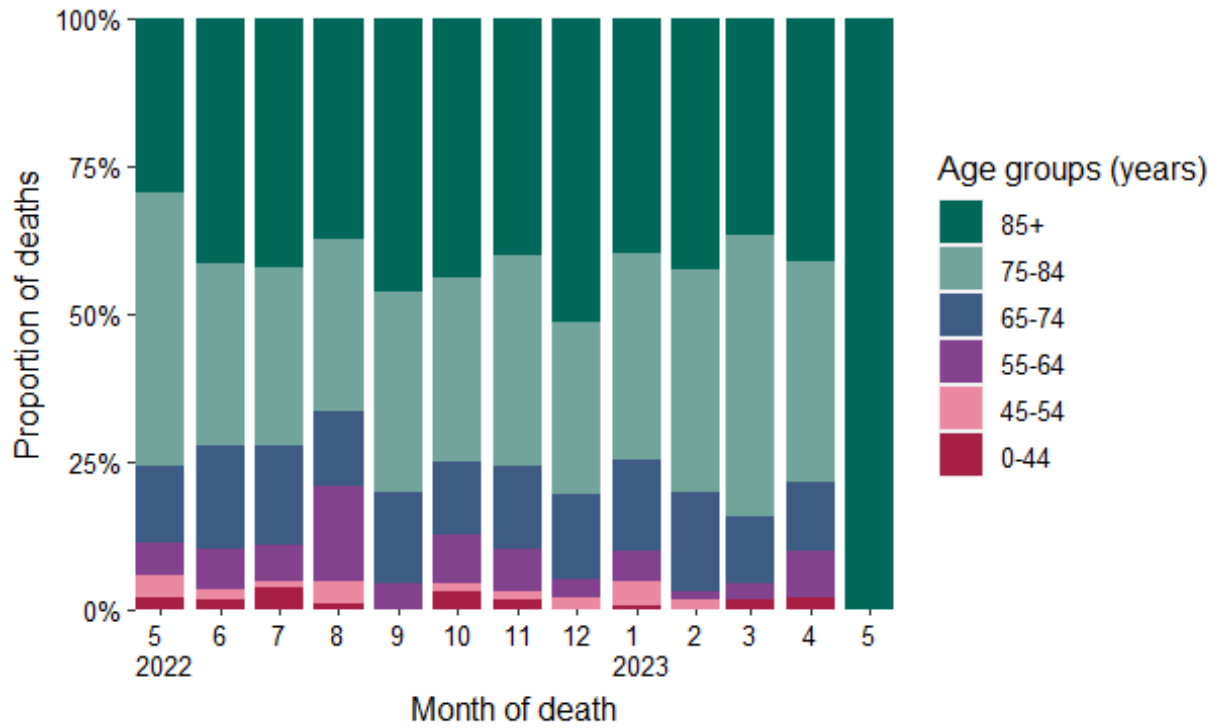


Figure 11: Age distribution of COVID-19 deaths notified on CIDR in Ireland between June, 2022 and May, 2023

## Laboratory data of SARS-CoV-2 PCR tests

In week 19, a total of 5,015 SARS-CoV-2 tests were performed, of which 476 (9.5%) were positive.

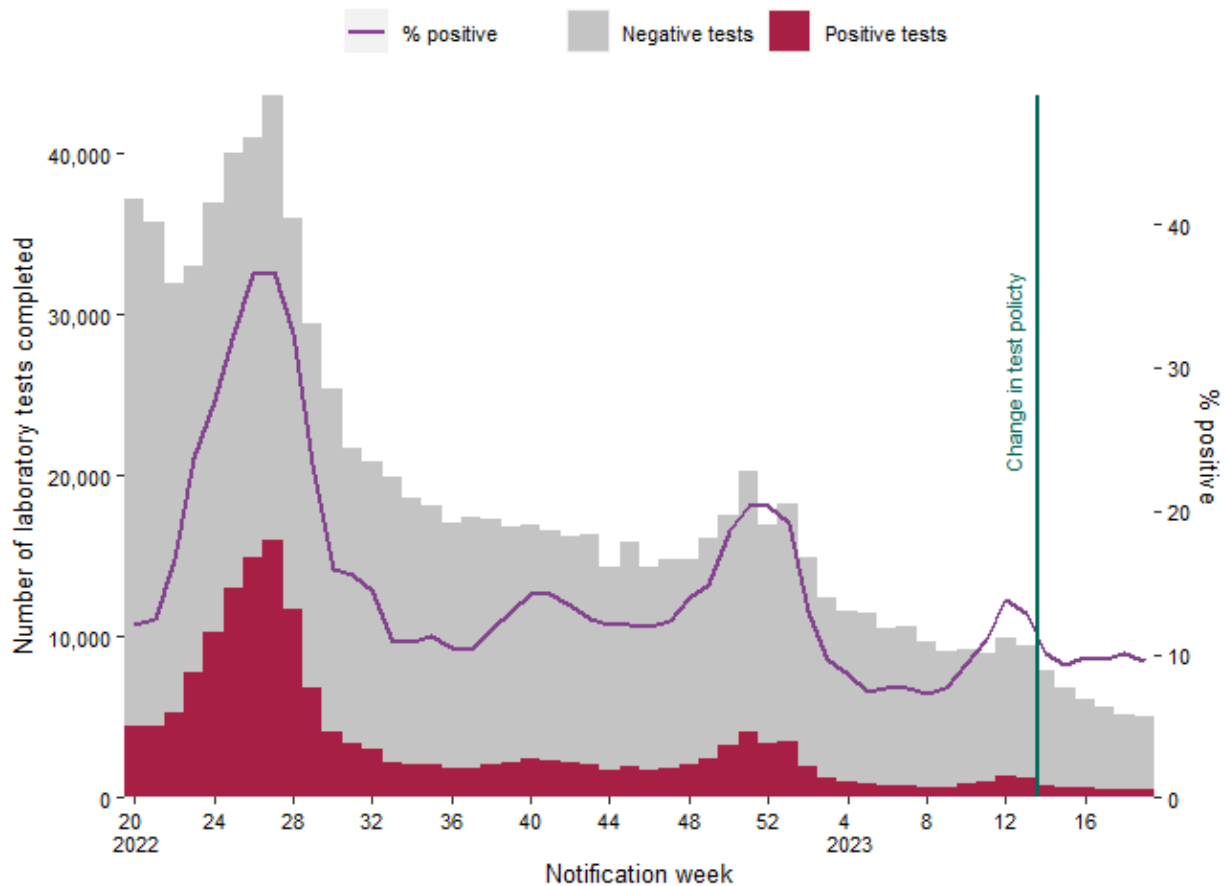


Figure 12: Number of completed laboratory tests by result and % positive tests<sup>7</sup> in Ireland between week 20, 2022 and week 19, 2023. Data source: Deloitte Ireland LLP<sup>8, 9</sup>

<sup>7</sup> Positive tests refer to all positive specimens and includes duplicates and individuals who were retested.

<sup>8</sup> Since 28/02/2022 (week 9), PCR testing is only needed for symptomatic people in the community within certain risk groups: those who have not had booster vaccination and are aged 55 years and older; those with a high-risk medical conditions; those who are immunocompromised; those who live in the same household as a person who is immunocompromised; those who provide care or support for person they know to be immunocompromised; those who are pregnant; Healthcare Workers.

<sup>9</sup> Since 30/03/2023 (week 13, 2023), community test centres closed and PCR testing was only performed based on clinical assessment.



## Notes

### Technical Notes

#### 1. Data Source

Data are based on statutory notifications and were extracted from Computerised Infectious Disease Reporting (CIDR) system and the HSE COVID care tracker. Data are provisional and subject to ongoing review, validation and update. As a result, figures in this report may differ from previously published figures. Slide with Laboratory testing for SARS-CoV-2 data provided by Deloitte Ireland LLP

#### 2. Epidemiological date

Epidemiological date is based on the earliest of dates available on the case and taken from date of onset of symptoms, date of diagnosis, laboratory specimen collection date, laboratory received date, laboratory reported date or event creation date/notification date on CIDR. By using this date rather than event creation/ notification date, adjusts for any delays in testing/notification. Further information on epidemiological dates and weeks can be found on the [HPSC website](#).

#### 3. Population data

Population data were taken from Census 2016. Data were aggregated into the following age groups for the analysis: 0-4 years, 5-12 years, 13-18 years, 19-24 years, 25-34 years, 35-44 years, 45-54 years, 55-64 years, 65-74 years, 75-84 years and  $\geq 85$  years.

## Acknowledgements

Sincere thanks are extended to all those who are participating in the collection of data and reporting of data used in these reports. This includes the HSE COVID-19 Contact Management Programme (CMP), staff in ICU units, notifying clinicians, laboratory staff, public health doctors, nurses, surveillance scientists, microbiologists and administrative staff.

## Please refer to the Health Protection Surveillance (HPSC) website for

- [Epidemiology of COVID-19 in Ireland infohub](#)
- [Outbreaks/clusters in Ireland COVID-19 weekly report](#)
- [Monthly report on COVID-19 deaths reported in Ireland](#)
- [SARS-CoV-2 wastewater surveillance programme weekly reports](#)
- [Virus variants in Ireland COVID-19 summary report](#)
- [Epidemiology of intensive care admissions in cases of COVID-19 in Ireland](#)