



Seirbhís Sláinte  
Níos Fearr  
á Forbairt

Building a  
Better Health  
Service



# Weekly Report on the Epidemiology of COVID-19 in Ireland

## Week 5

Health Protection Surveillance Centre, HPSC

COVID-19 Epidemiology Team, 08/02/2021

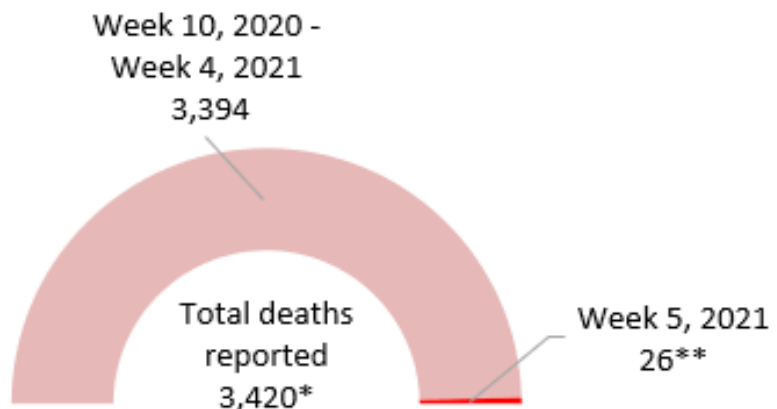
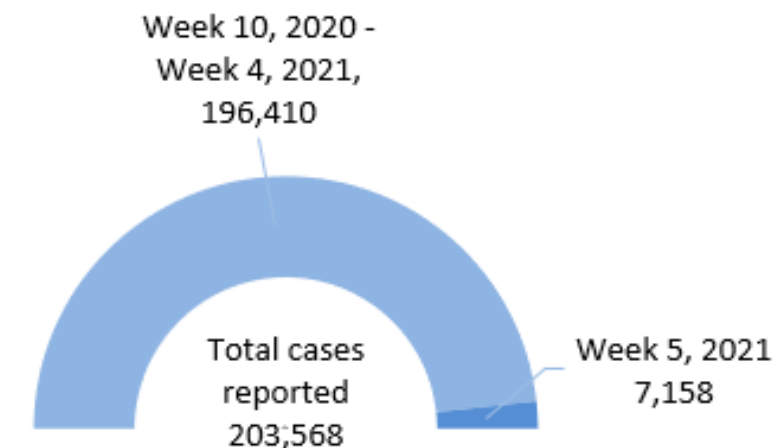
### Dates to note:

- Week 5 (31<sup>st</sup> January to 6<sup>th</sup> February 2021)
- Week 48 (22<sup>nd</sup> to 28<sup>th</sup> November 2020)
- Week 10 (1<sup>st</sup> to 7<sup>th</sup> March 2020)– The beginning of the pandemic in Ireland

**Note:** The epidemiological weeks in this report, run from Sunday to Saturday, please refer to appendix 1 for a complete list of epidemiological weeks with start and end dates.

*Note: Data were extracted from Computerised Infectious Disease Reporting (CIDR) system on 08/02/2021 and are provisional and subject to ongoing review, validation and update. As a result, figures in this report may differ from previously published figures.*

# Summary characteristics of COVID-19 cases notified in Ireland

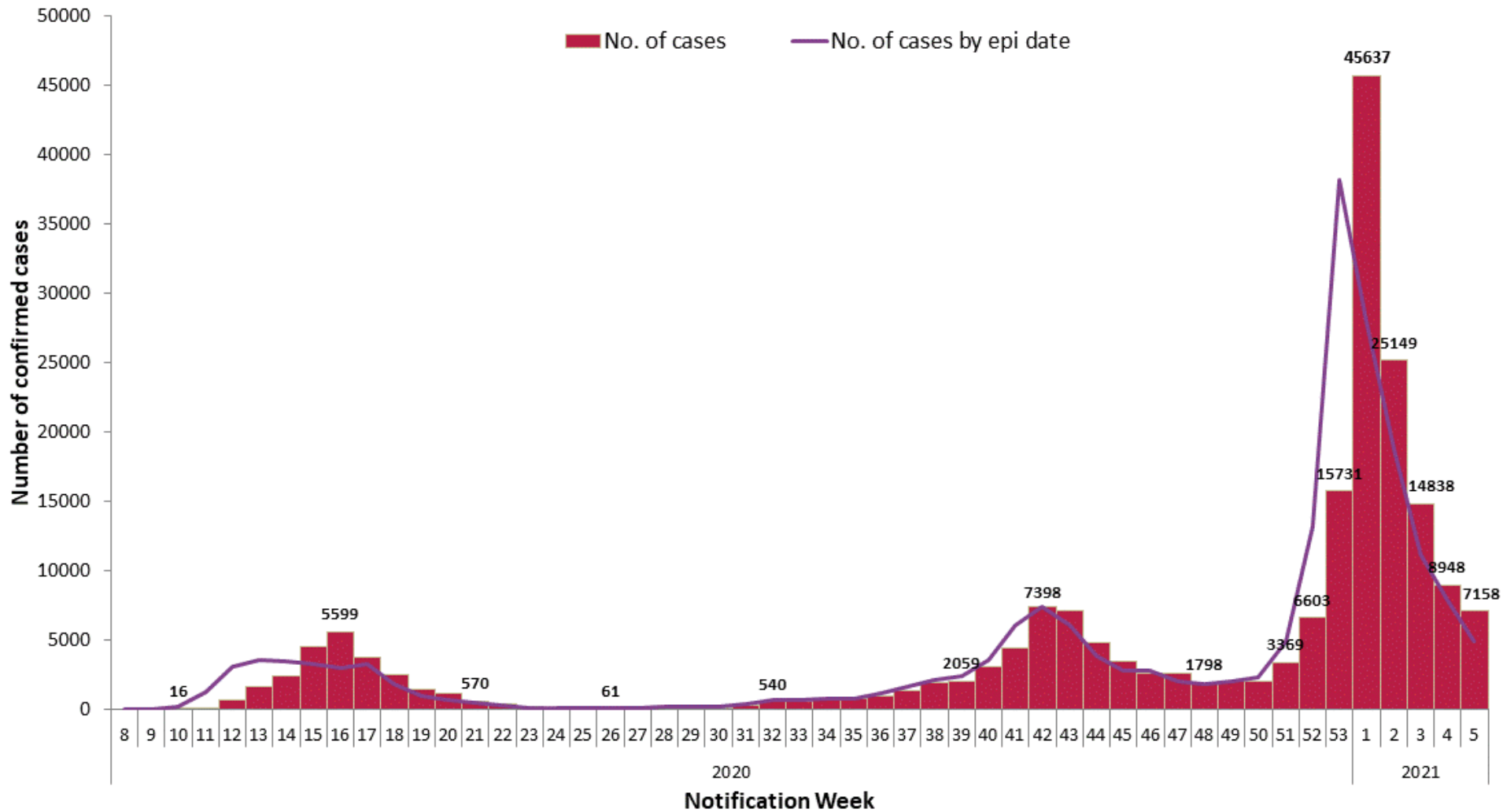


	Total (week 10, 2020-week 5, 2021 )		Week 5, 2021	
	Number	Percent	Number	Percent
Total number of confirmed cases	203,568		7,158	
Incidence rate of confirmed cases per 100,000 population	4275.0		150.3	
Number of cases hospitalised	11,533	5.67	524***	7.32
Number of cases admitted to ICU	1,157	0.57	12***	0.17
Number of deaths among confirmed cases	3,420	1.68	26	0.36
Case fatality ratio (CFR %)	1.68		0.36	
Incidence rate of confirmed deaths per 100,000 population	71.82		0.55	
Number of cases associated with clusters	58,063	28.52	887	12.39
Number of imported cases	849	0.42	2	0.03
Number of cases in healthcare workers	25,449	12.50	718	10.03
Males	96,286	47.30	3,429	47.90
Females	107,229	52.67	3,724	52.03
M:F ratio	0.90		0.92	
Median (years)	38		39	
Mean age (years)	41		41	
Age range (years)	0 - 108		0 - 103	

\*\*\*The number of cases who were hospitalised and the number of cases who were admitted to ICU relate only to cases who were notified and admitted to hospital or ICU in week 5. It does not include cases who were notified prior to week 5 and who were admitted to hospital or ICU in week 5.

\* Total deaths reported include deaths from confirmed cases only.

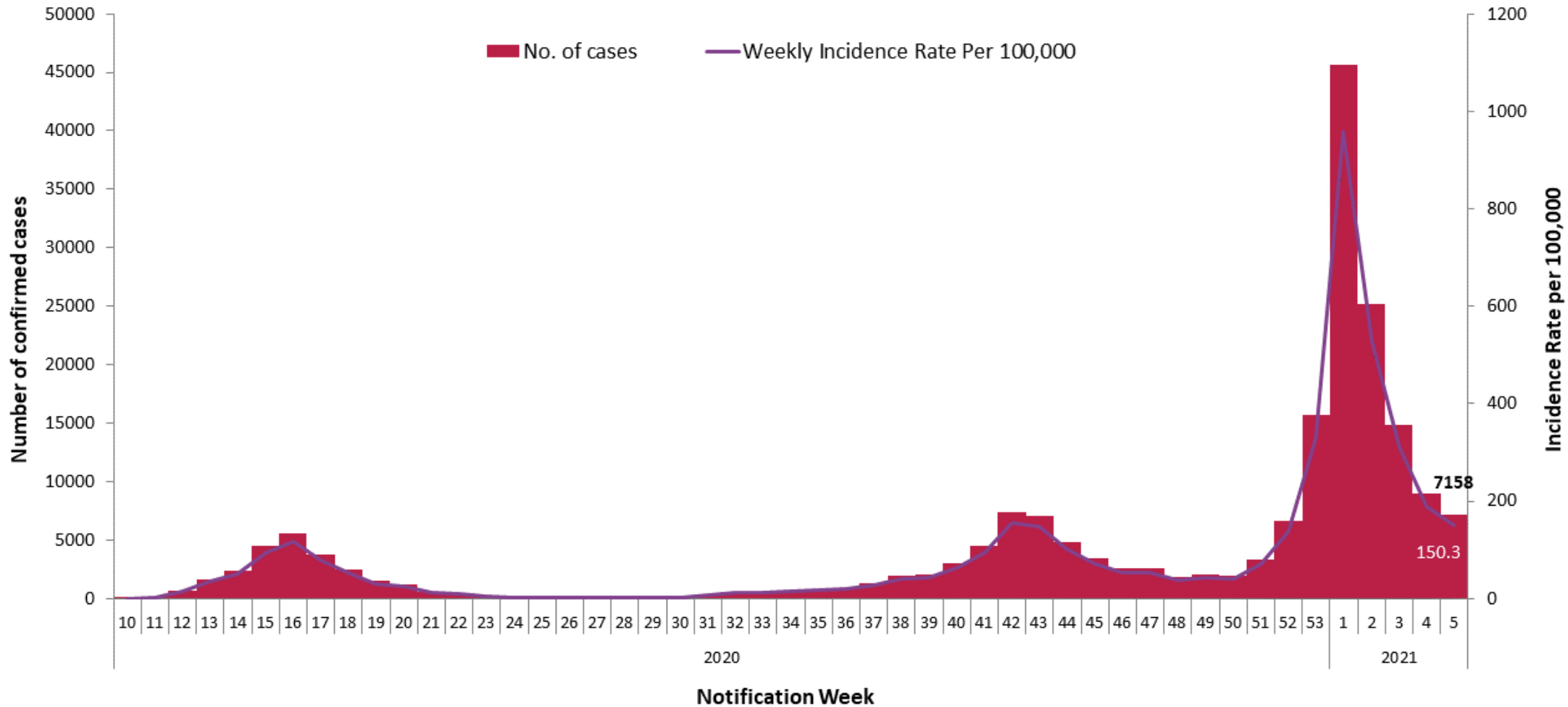
\*\*The number of deaths relate only to cases who were notified and who died in week 5. It does not include cases who were notified prior to week 5 and who died in week 5.



**Figure 1:** Number of confirmed COVID-19 cases by notification week and epidemiological week in Ireland between week 8, 2020 and week 5, 2021.

At the end of week 53 a significant number of cases were awaiting processing, as a result the number of cases reported in week 53 is reduced and the number of cases reported in week 1 is inflated.

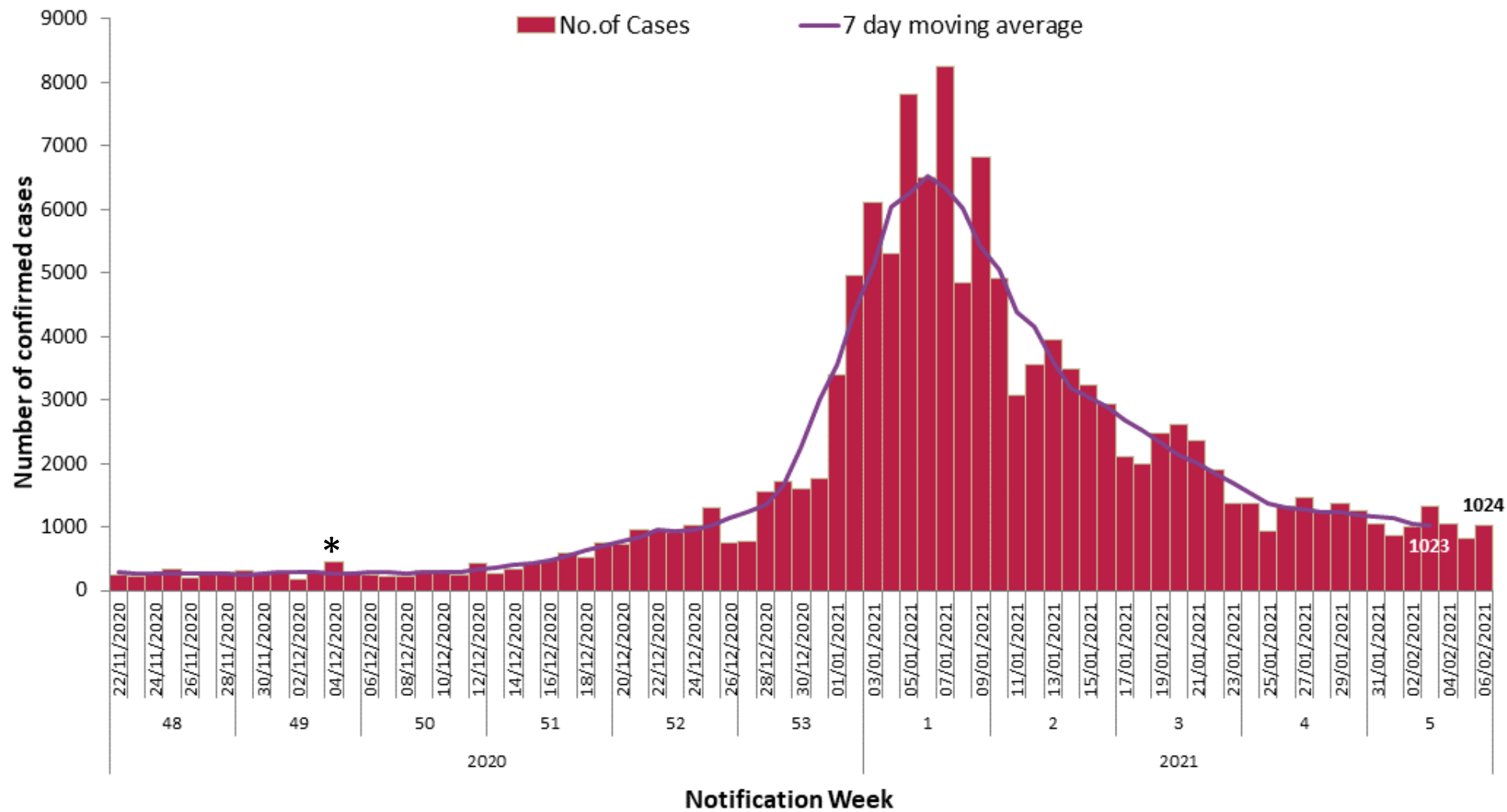
*In between week 15 and 16 (05/04/2020 – 19/04/2020) the daily number of COVID-19 events notified in Ireland is inflated due to batch reporting of cases with specimen dates between from 19/03/2020 – 01/04/2020 in addition to real-time reporting of cases with contemporaneous specimen dates*



**Figure 2:** Number of confirmed COVID-19 cases by notification week and weekly incidence rate per 100,000 population in Ireland between week 10, 2020 and week 5, 2021.

At the end of week 53 a significant number of cases were awaiting processing, as a result the number of cases reported in week 53 is reduced and the number of cases reported in week 1 is inflated.

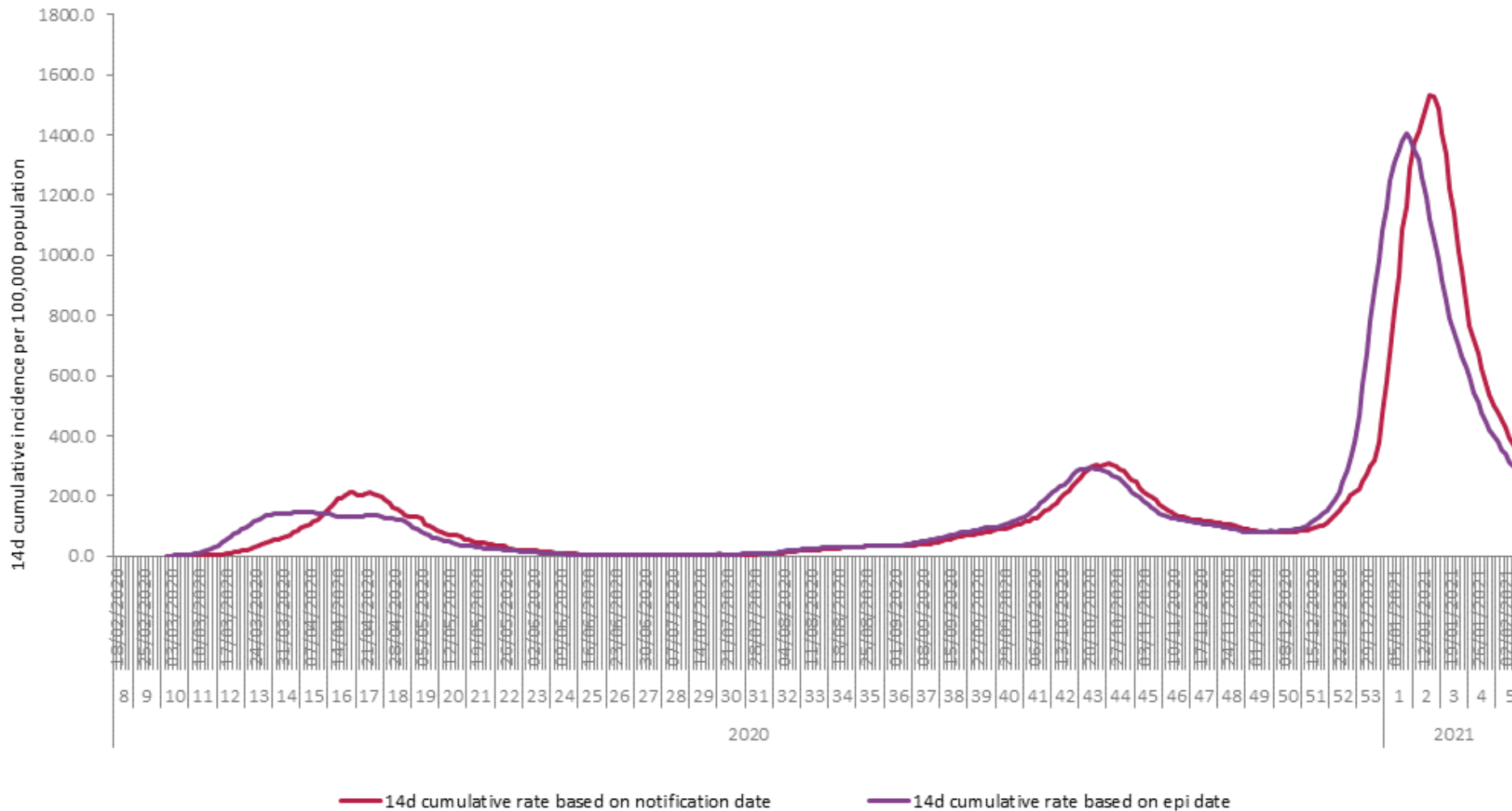
Population data were taken from Census 2016



**Figure 3:** Number of confirmed COVID-19 cases , and 7-day moving average, by notification date in Ireland between week 48, 2020 and week 5, 2021.

At the end of week 53 a significant number of cases were awaiting processing, as a result the number of cases reported in week 53 is reduced and the number of cases reported in week 1 is inflated.

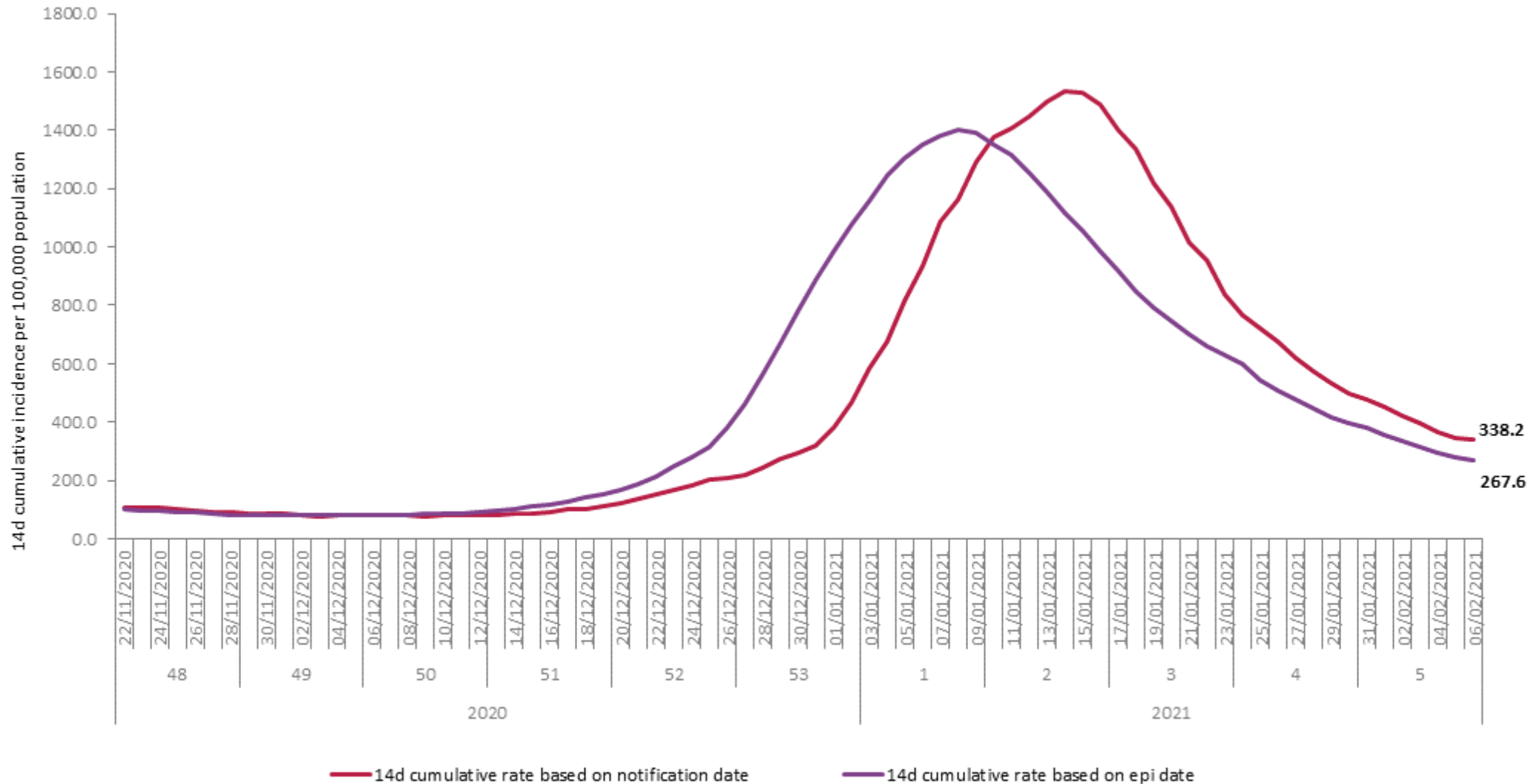
\*on the 04/12/2020 the number of COVID-19 cases notified in Ireland is inflated due to the inclusion of cases notified earlier in week 49 which were batch reported following an IT issue on 02/12/2020



**Figure 4a:** Cumulative 14-day incidence rate of confirmed COVID-19 cases per 100,000 population notified in Ireland by notification and epidemiological date\* between week 8, 2020 and week 5, 2021.

At the end of week 53 a significant number of cases were awaiting processing, as a result the number of cases reported in week 53 is reduced and the number of cases reported in week 1 is inflated.

\*Epidemiological date: is based on the earliest of dates available on the case and taken from date of onset of symptoms, date of diagnosis, laboratory specimen collection date, laboratory received date, laboratory reported date or event creation date/notification date on CIDR. By using this date rather than event creation/notification date, adjusts for any delays in testing/notification. Please note that the trend in cases by epidemiological date will show a lag for recent days and therefore should be interpreted with caution.



**Figure 4b:** Cumulative 14-day incidence rate of confirmed COVID-19 cases per 100,000 population notified in Ireland by notification and epidemiological date between week 48, 2020 and week 5, 2021.

At the end of week 53 a significant number of cases were awaiting processing, as a result the number of cases reported in week 53 is reduced and the number of cases reported in week 1 is inflated.

**Table 1:** Characteristics of confirmed COVID-19 cases notified in Ireland during week 5, 2021.

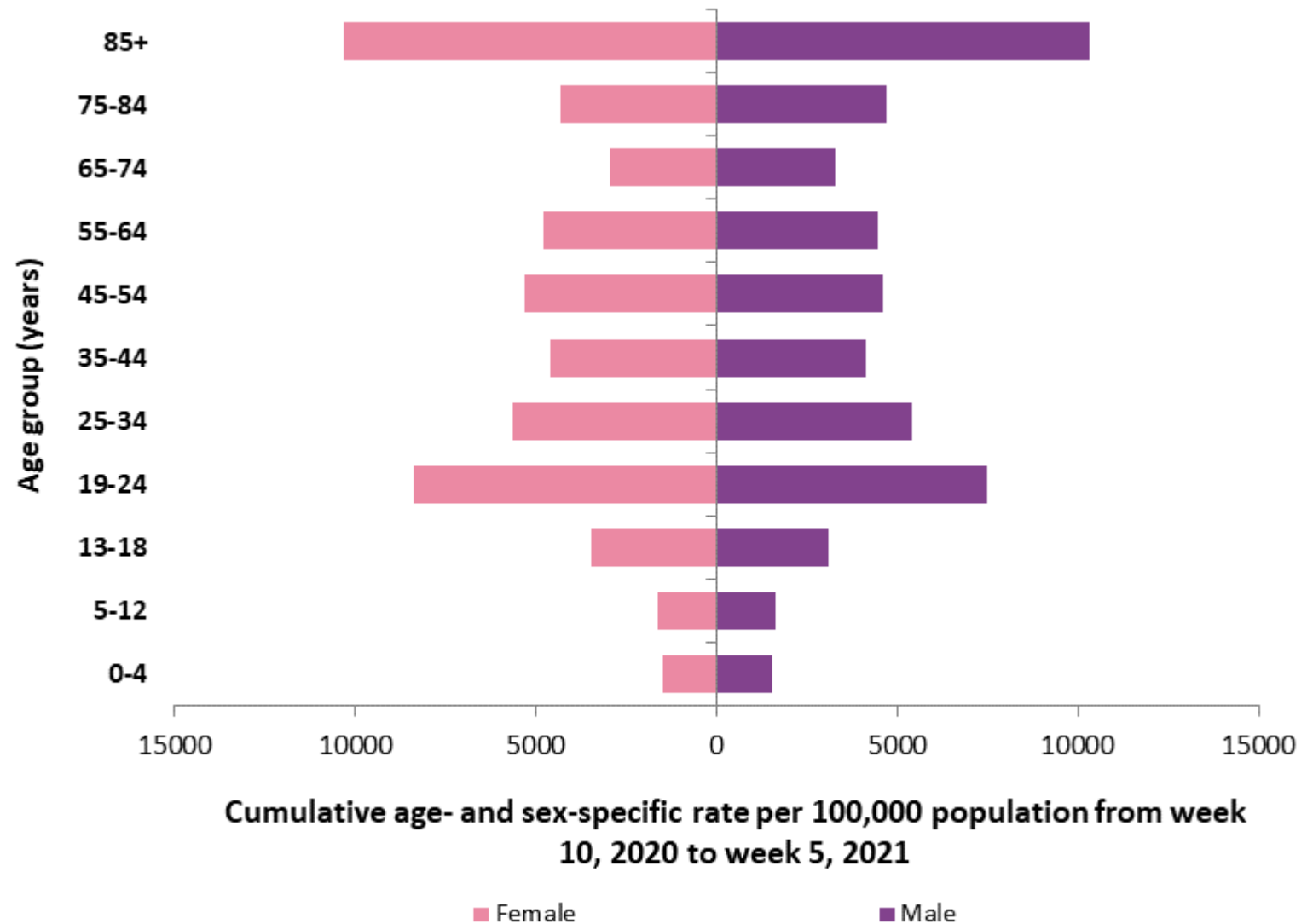
Characteristic		Week 5	Percent
Total number of confirmed cases		7,158	100
<b>Sex</b>	Male:Female ratio	0.9	
	Male	3,429	47.9
	Female	3,724	52.0
	Unknown	5	0.1
<b>Age</b>	Mean age (years)	39	
	Median age (years)	41	
	Age range (years)	0 - 103	
	0-4 yrs	213	3.0
	5-12 yrs	374	5.2
	13-18 yrs	461	6.4
	19-24 yrs	821	11.5
	25-34 yrs	1,132	15.8
	35-44 yrs	1,210	16.9
	45-54 yrs	1,085	15.2
	55-64 yrs	760	10.6
	65-74 yrs	398	5.6
	75-84 yrs	354	4.9
	85+ yrs	342	4.8
	Unknown	8	0.1
<b>Symptomatic*</b>	Yes	4,556	63.6
	No	1296	18.1
	Unknown	1,306	18.2

\*Symptom status is recorded at the time of test and is not updated; therefore, a proportion of the asymptomatic cases may subsequently develop symptoms however this will not be captured in the data.



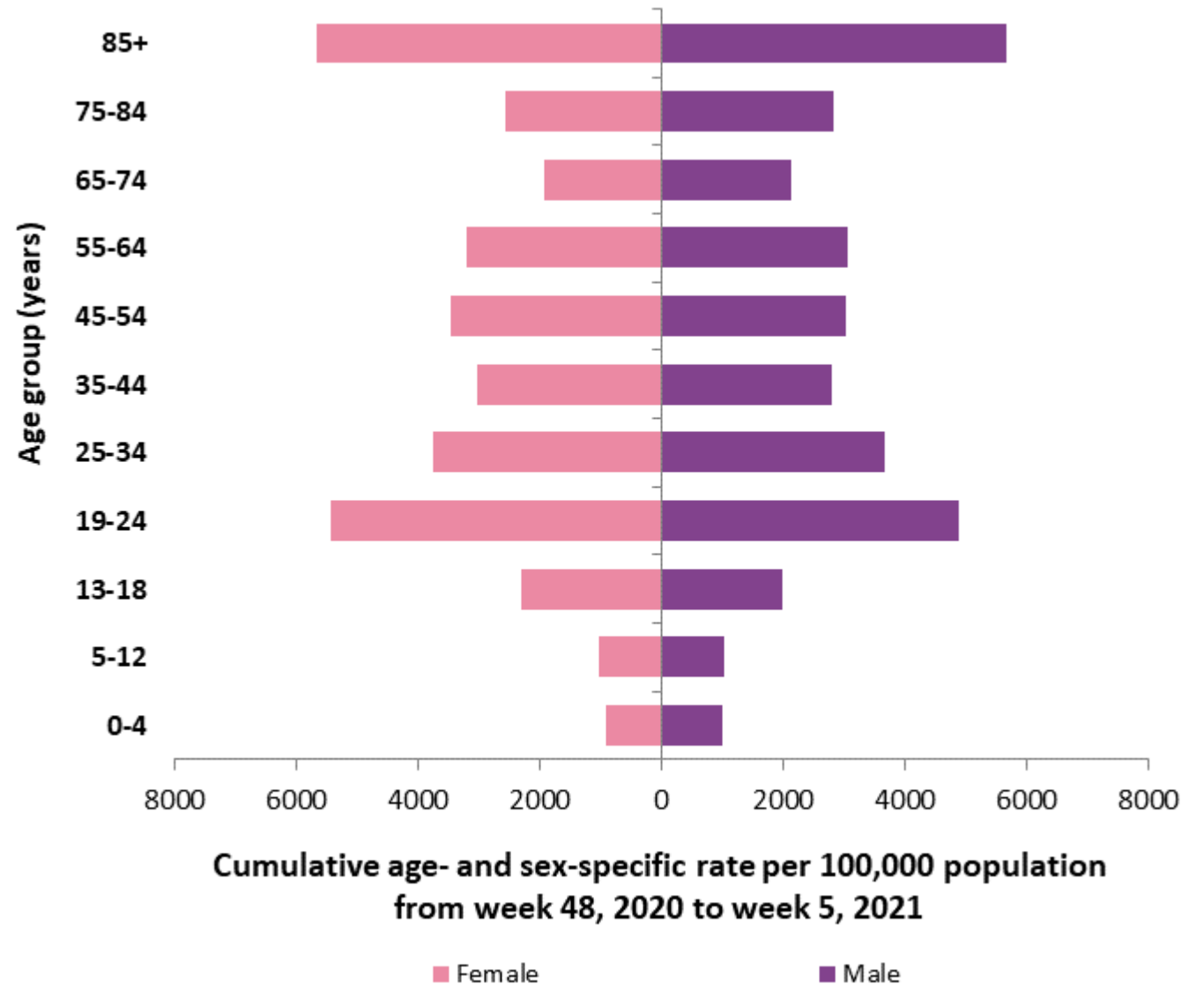
**Figure 5a:** Cumulative age- and sex-specific incidence rates of confirmed COVID-19 cases per 100,000 population notified in Ireland between week 10, 2020 and week 5, 2021.

(excluding 83 cases for whom age is unknown, 52 cases for whom sex is unknown and one case for whom both are unknown)



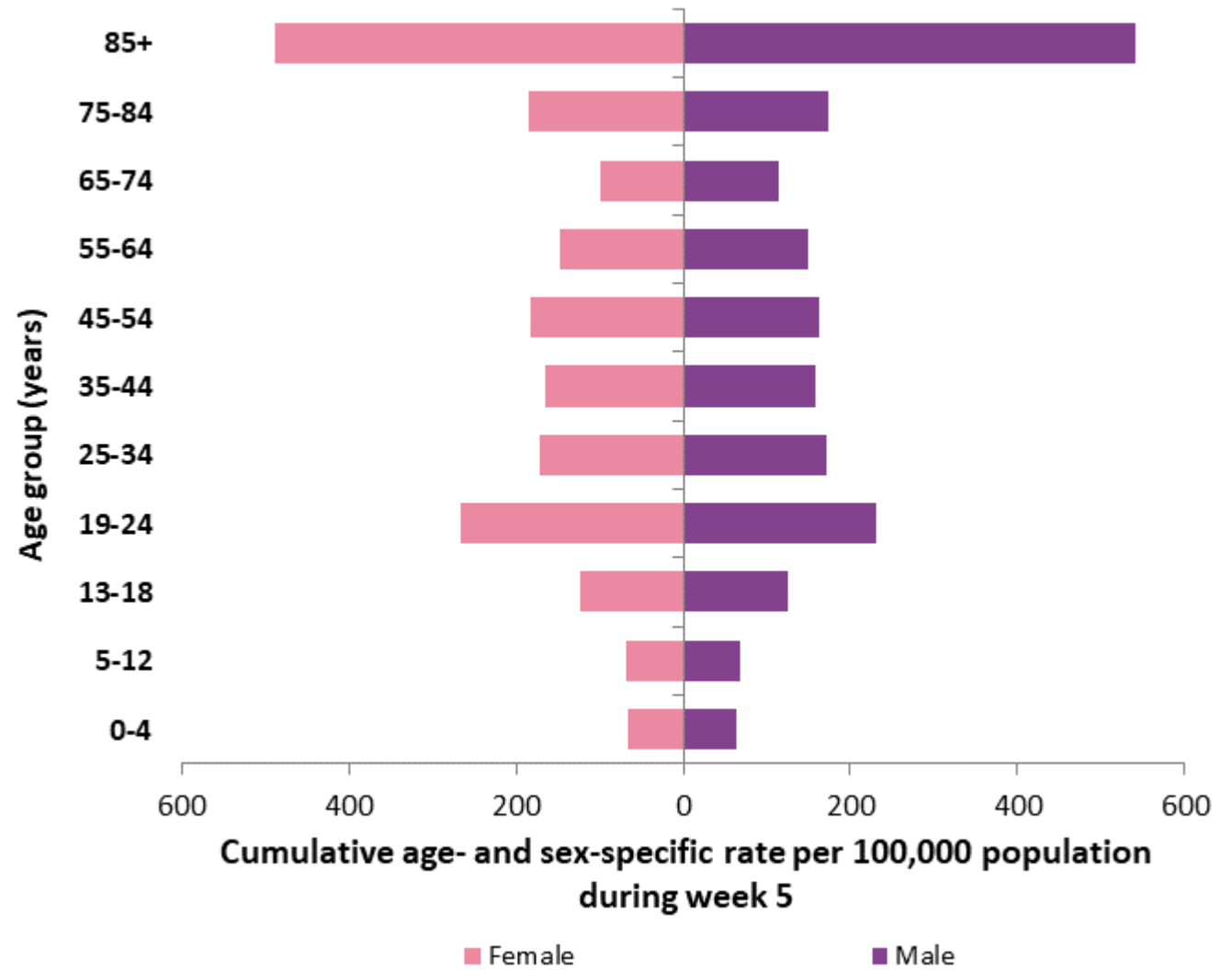
**Figure 5b:** Cumulative age- and sex-specific incidence rates of confirmed COVID-19 cases per 100,000 population notified in Ireland between week 48, 2020 and week 5, 2021.

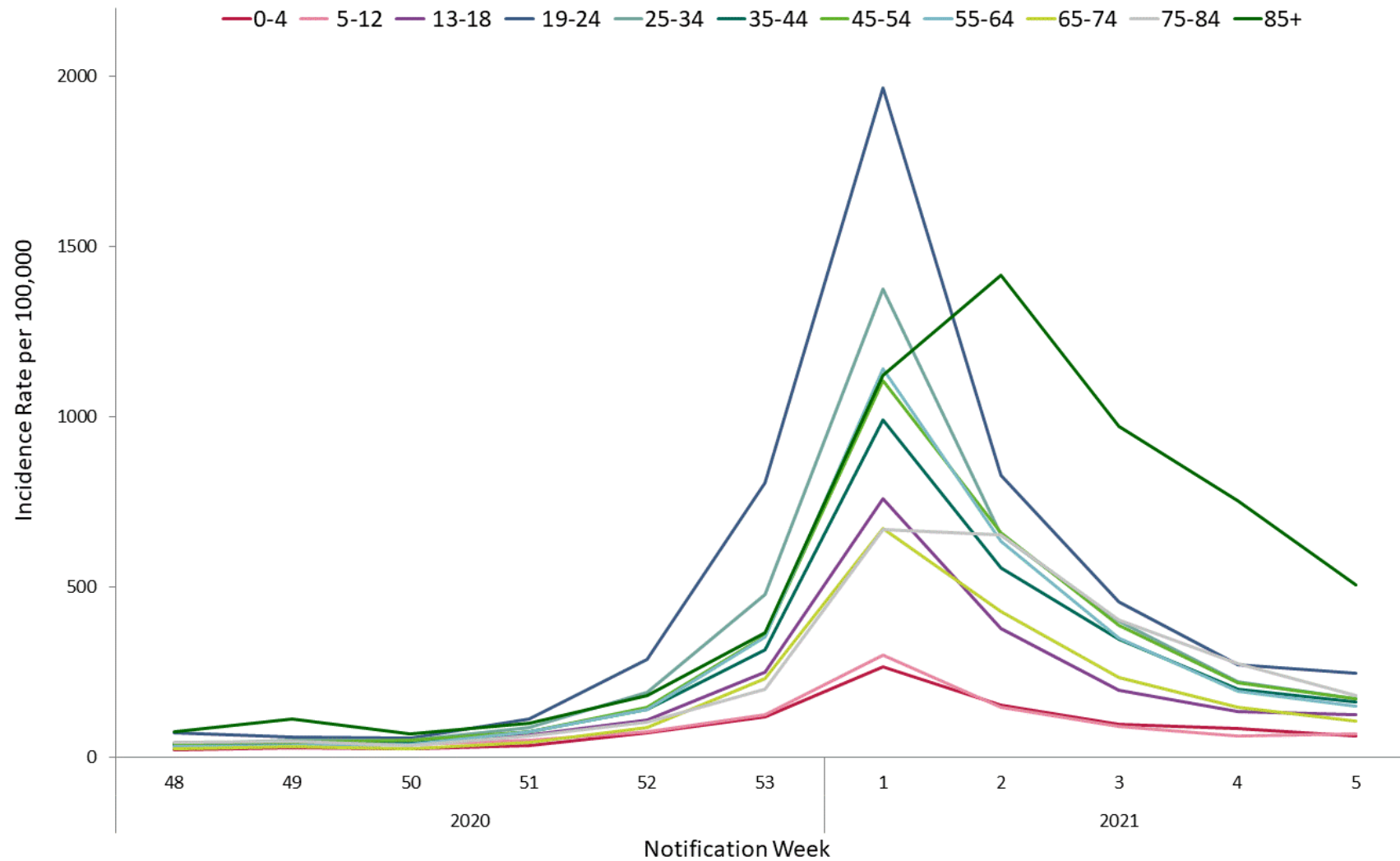
(excluding 58 cases for whom age is unknown, and 44 cases for whom sex is unknown)



**Figure 5c:** Cumulative age- and sex-specific incidence rates of confirmed COVID-19 cases per 100,000 population notified in Ireland during week 5, 2021.

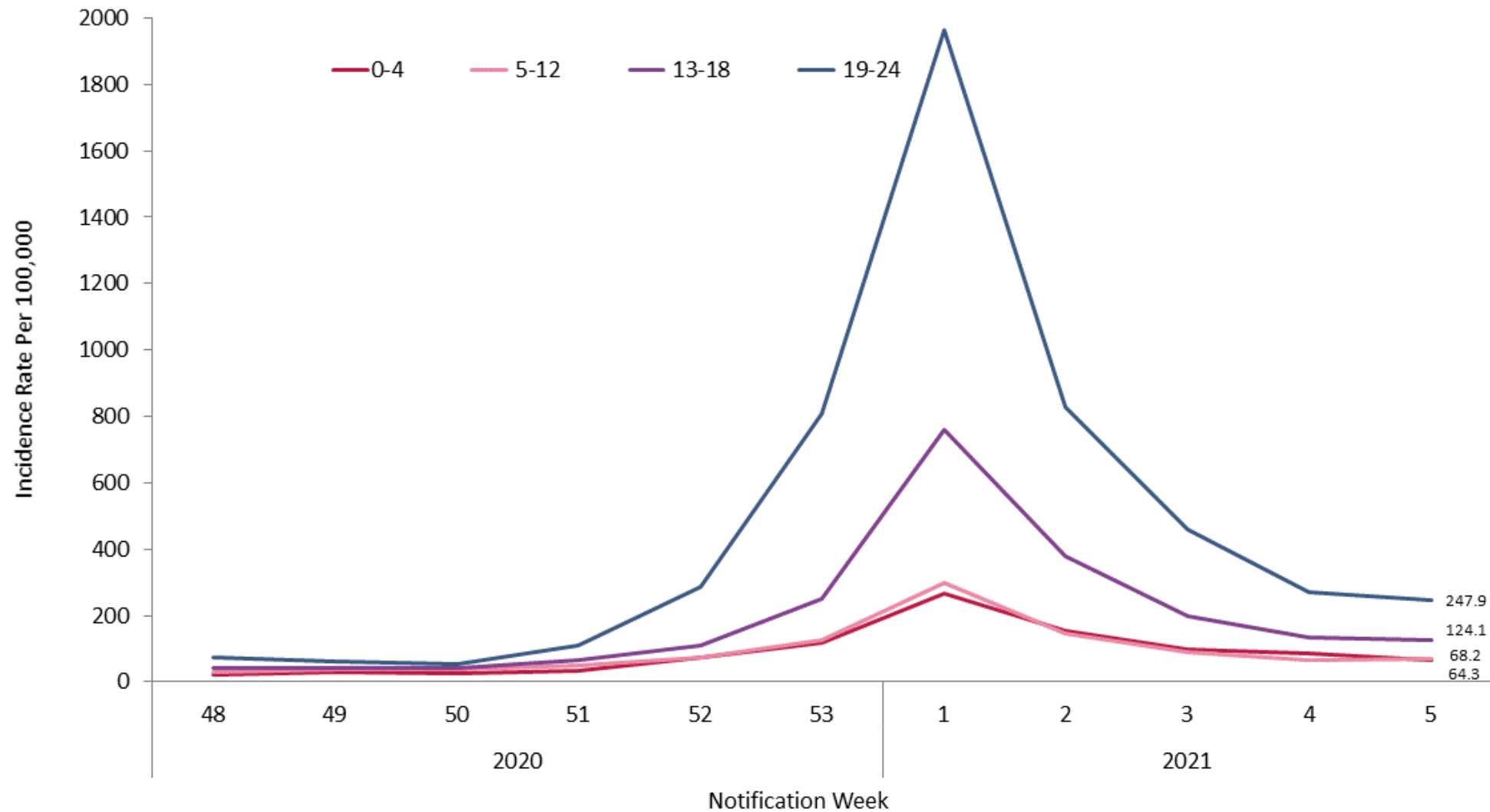
(excluding 8 cases for whom age is unknown, and five cases for whom sex is unknown)





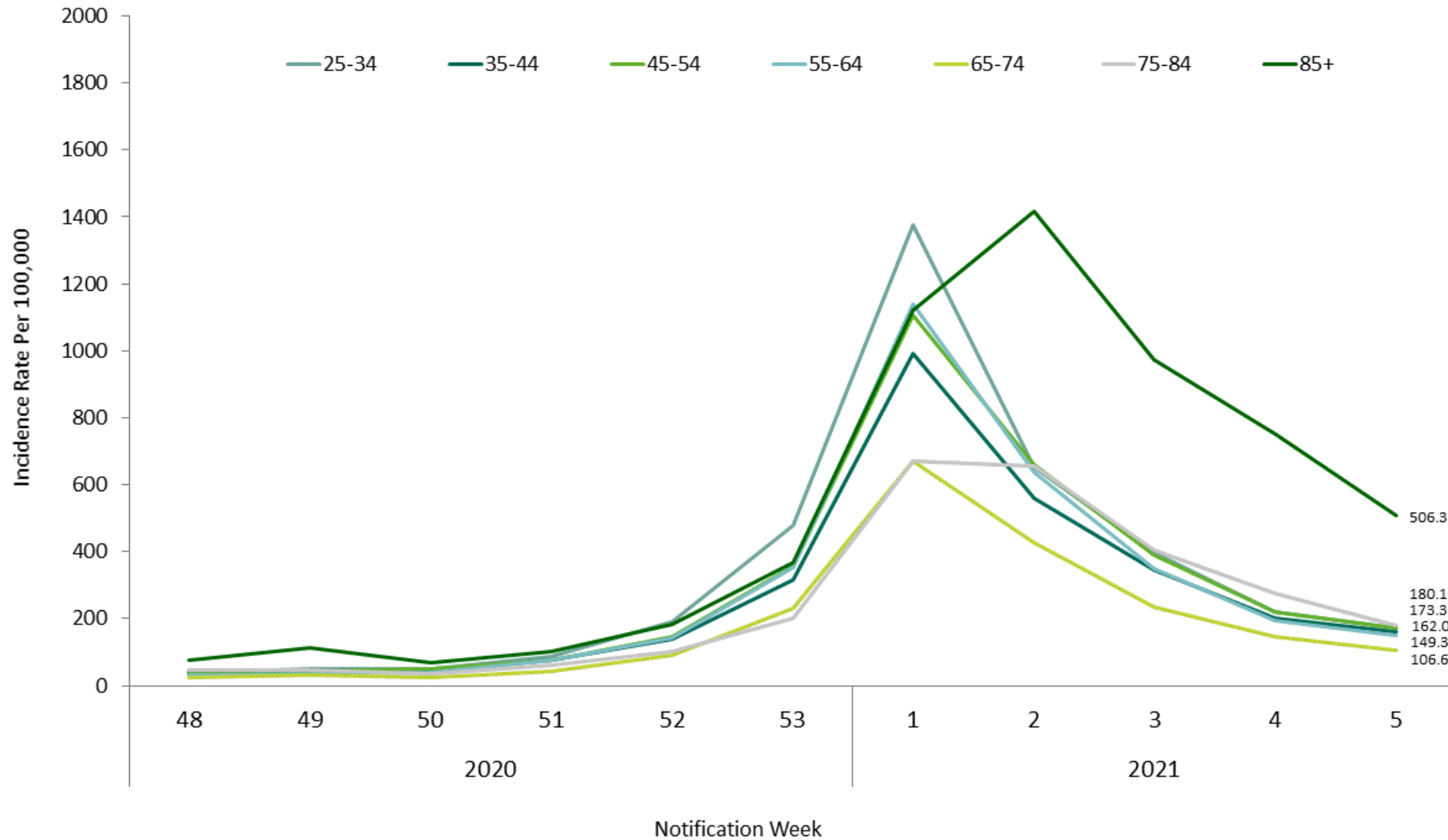
**Figure 6a:** Weekly age-specific incidence rates of confirmed COVID-19 cases per 100,000 population in Ireland between week 48, 2020 and week 5, 2021.

At the end of week 53 a significant number of cases were awaiting processing, as a result the incidence rates reported in week 53 are reduced and the incidence rates reported in week 1 are inflated.



**Figure 6b:** Weekly age-specific incidence rates of confirmed COVID-19 cases per 100,000 population in Ireland between week 48, 2020 and week 5, 2021.

At the end of week 53 a significant number of cases were awaiting processing, as a result the incidence rates reported in week 53 are reduced and the incidence rates reported in week 1 are inflated.



**Figure 6c:** Weekly age-specific incidence rates of confirmed COVID-19 cases per 100,000 population in Ireland between week 48, 2020 and week 5, 2021.

At the end of week 53 a significant number of cases were awaiting processing, as a result the incidence rates reported in week 53 are reduced and the incidence rates reported in week 1 are inflated.

		Age Range											
		0-4	5-12	13-18	19-24	25-34	35-44	45-54	55-64	65-74	75-84	85+	National
2020	48	23.2	29.7	40.9	72.2	39.0	37.2	39.6	30.5	24.1	44.8	74.0	37.8
	49	28.7	38.3	43.1	60.7	48.8	40.3	44.2	35.6	30.3	46.3	114.0	42.6
	50	24.7	36.5	40.9	55.3	50.3	41.6	49.0	37.3	24.9	34.6	68.1	41.2
	51	35.3	51.4	65.1	111.7	88.0	75.8	75.4	75.3	44.2	62.6	100.7	70.7
	52	72.1	74.9	110.9	286.5	190.5	140.0	145.8	140.9	89.2	103.3	182.1	138.7
	53	117.9	125.4	250.0	806.1	478.6	316.4	355.7	352.9	231.9	201.0	367.1	330.4
2021	1	266.4	299.8	759.7	1965.2	1375.0	991.7	1104.7	1140.0	671.5	669.7	1120.6	958.4
	2	152.9	146.0	377.0	827.3	652.2	557.8	660.8	635.6	426.8	654.4	1415.1	528.1
	3	97.1	91.5	197.3	457.4	398.7	346.1	388.2	350.1	234.3	403.0	972.5	311.6
	4	84.2	64.0	135.6	271.4	221.1	201.6	219.0	193.1	147.0	274.8	752.0	187.9
	5	64.3	68.2	124.1	247.9	171.7	162.0	173.3	149.3	106.6	180.1	506.3	150.3

**Figure 7:** Heat map of weekly age-specific incidence rates of confirmed COVID-19 cases per 100,000 population in Ireland between week 48, 2020 and week 5, 2021.

At the end of week 53 a significant number of cases were awaiting processing, as a result the incidence rates reported in week 53 are reduced and the incidence rates reported in week 1 are inflated.

**Table 2:** Characteristics of confirmed COVID-19 cases by county notified in Ireland, during week 5, 2021.

County	Cases		M:F ratio	Median age	Incidence Rate per 100,000
	N	%		(years)	
Monaghan	212	3.0	1.1	40.5	345.4
Wexford	315	4.4	0.8	39	210.4
Waterford	243	3.4	1.0	41	209.2
Carlow	115	1.6	0.9	38	202.0
Louth	238	3.3	1.1	40.5	184.7
Dublin	2454	34.3	1.0	37	182.1
Galway	423	5.9	0.9	40	163.9
Meath	318	4.4	0.8	42.5	163.0
Kildare	347	4.8	1.0	41	156.0
Mayo	203	2.8	0.8	45	155.5
Laois	130	1.8	1.2	42	153.5
Limerick	274	3.8	0.9	37.5	140.6
Offaly	107	1.5	0.7	40	137.2
Donegal	204	2.8	1.0	35	128.1
Westmeath	111	1.6	0.7	43	125.0
Longford	51	0.7	0.6	38	124.8
Cork	655	9.2	0.7	45	120.7
Cavan	88	1.2	1.1	38.5	115.5
Sligo	75	1.0	0.8	38	114.4
Wicklow	149	2.1	1.0	33	104.6
Leitrim	27	0.4	1.3	38	84.3
Clare	89	1.2	0.8	42	74.9
Kerry	106	1.5	1.0	37	71.8
Kilkenny	71	1.0	1.0	40	71.5
Tipperary	113	1.6	1.2	39	70.8
Roscommon	40	0.6	0.9	35.5	62.0



		Carlow	Cavan	Clare	Cork	Donegal	Dublin	Galway	Kerry	Kildare	Kilkenny	Laois	Leitrim	Limerick	Longford	Louth	Mayo	Meath	Monaghan	Offaly	Roscommon	Sligo	Tipperary	Waterford	Westmeath	Wexford	Wicklow	National
2020	48	31.6	19.7	14.3	24.5	111.2	43.6	20.2	21.0	21.1	83.6	29.5	3.1	60.5	41.6	75.3	36.8	24.1	31.0	23.1	23.2	21.4	45.1	41.3	13.5	7.3	52.7	37.8
	49	73.8	40.7	19.4	13.4	112.4	50.9	31.0	12.2	27.4	85.7	26.0	12.5	80.6	44.0	83.0	43.7	25.1	97.7	34.6	24.8	15.3	44.5	21.5	13.5	12.0	68.1	42.6
	50	84.3	68.3	12.6	12.9	107.4	42.2	28.7	8.1	30.1	112.9	69.7	12.5	50.8	97.9	93.1	65.9	34.4	39.1	30.8	20.1	33.6	38.2	45.6	15.8	24.7	35.8	41.2
	51	110.7	106.3	14.3	39.1	154.5	81.9	23.3	99.5	54.8	84.7	105.1	12.5	99.5	46.5	144.3	50.6	74.3	86.3	34.6	21.7	59.5	27.0	58.5	28.2	143.6	32.3	70.7
	52	112.4	89.3	105.2	123.6	271.4	166.5	98.8	149.6	113.7	184.4	86.2	56.2	227.3	34.3	166.8	79.7	105.6	202.0	46.2	66.6	131.2	72.1	99.8	80.0	205.7	81.4	138.7
	53	252.9	506.7	397.2	282.4	554.7	276.5	276.3	299.2	164.5	305.3	328.2	287.1	612.6	342.5	773.6	491.2	372.2	858.5	315.5	311.4	497.4	196.8	234.1	244.5	282.5	119.4	330.4
2021	1	1085.5	978.0	989.8	1054.6	853.1	1197.1	454.9	761.6	807.6	852.5	540.8	424.4	1226.3	552.9	1429.2	667.4	769.1	1668.1	556.7	415.2	631.7	615.5	1304.1	463.0	1179.5	496.4	958.4
	2	669.2	449.0	472.2	527.6	533.3	563.0	630.5	280.3	397.3	315.4	433.3	149.8	644.4	166.4	810.0	970.1	460.9	1005.1	406.6	502.0	212.1	411.8	572.4	255.7	665.2	308.2	528.1
	3	432.1	349.2	196.1	273.0	294.0	373.1	251.9	156.4	306.5	153.2	242.0	137.3	314.5	200.6	450.8	350.9	317.4	656.5	305.3	145.6	218.2	245.7	395.1	184.7	394.7	221.2	311.6
	4	265.2	140.5	109.4	152.3	185.9	230.3	170.5	81.9	147.0	83.6	145.2	74.9	174.4	173.7	286.3	223.0	188.2	413.8	210.4	68.2	138.9	148.5	286.6	127.3	241.1	127.1	187.9
	5	202.0	115.5	74.9	120.7	128.1	182.1	163.9	71.8	156.0	71.5	153.5	84.3	140.6	124.8	184.7	155.5	163.0	345.4	137.2	62.0	114.4	70.8	209.2	125.0	210.4	104.6	150.3

**Figure 8:** Heat map of weekly incidence rates of confirmed COVID-19 cases per 100,000 population, by county, notified in Ireland between week 48, 2020 and week 5, 2021.

At the end of week 53 a significant number of cases were awaiting processing, as a result the incidence rates reported in week 53 are reduced and the incidence rates reported in week 1 are inflated.

		HSE-E	HSE-M	HSE-MW	HSE-NE	HSE-NW	HSE-SE	HSE-S	HSE-W	National
2020	Notification Week 48	41.5	24.6	40.5	38.7	74.4	41.3	23.7	25.4	37.8
	49	49.3	27.4	51.2	53.7	74.8	43.7	13.2	33.8	42.6
	50	40.1	46.9	36.4	57.1	76.4	55.8	11.9	38.2	41.2
	51	74.3	54.7	59.7	101.0	112.0	89.0	52.0	30.9	70.7
	52	152.5	66.4	169.9	133.2	207.8	137.2	129.2	88.7	138.7
	53	248.8	303.5	482.6	572.4	504.8	246.5	286.0	343.2	330.4
2021	1	1088.2	523.4	1017.9	1106.8	745.9	1052.8	991.9	510.5	958.4
	2	520.2	334.9	553.0	629.6	403.2	529.1	474.7	710.0	528.1
	3	351.8	236.7	257.9	405.2	255.5	331.2	248.1	265.3	311.6
	4	210.9	161.1	156.1	238.3	159.3	202.6	137.3	171.0	187.9
	5	172.3	136.8	107.5	185.7	119.0	157.7	110.2	147.0	150.3

**Figure 9:** Weekly Incidence rates of confirmed COVID-19 cases per 100,000 population, by HSE area, notified in Ireland between week 48, 2020 and week 5, 2021.

At the end of week 53 a significant number of cases were awaiting processing, as a result the incidence rates reported in week 53 are reduced and the incidence rates reported in week 1 are inflated.

		CHO1	CHO2	CHO3	CHO4	CHO5	CHO6	CHO7	CHO8	CHO9
2020	48	57.8	25.4	40.5	23.7	41.3	55.3	31.8	34.9	43.9
	49	72.6	33.8	51.2	13.2	43.7	66.3	34.1	38.1	56.2
	50	69.8	38.2	36.4	11.9	55.8	47.8	31.5	52.3	45.2
	51	108.1	30.9	59.7	52.0	89.0	74.4	51.4	79.3	100.3
	52	186.1	88.7	169.9	129.2	137.2	178.8	129.9	99.3	162.2
	53	565.8	343.2	482.6	286.0	246.5	261.0	188.9	421.5	309.6
2021	1	938.7	510.5	1017.9	991.9	1052.8	1025.1	975.3	787.4	1255.7
	2	509.9	710.0	553.0	474.7	529.1	475.0	453.7	471.8	623.9
	3	338.4	265.3	257.9	248.1	331.2	324.4	314.8	305.5	410.8
	4	195.3	171.0	156.1	137.3	202.6	185.8	188.8	196.2	251.5
	5	151.6	147.0	107.5	110.1	157.7	142.0	151.0	154.4	215.2

**Figure 10:** Weekly Incidence rates of confirmed COVID-19 cases per 100,000 population by CHO notified in Ireland between week 48, 2020 and week 5, 2021.

At the end of week 53 a significant number of cases were awaiting processing, as a result the incidence rates reported in week 53 are reduced and the incidence rates reported in week 1 are inflated.

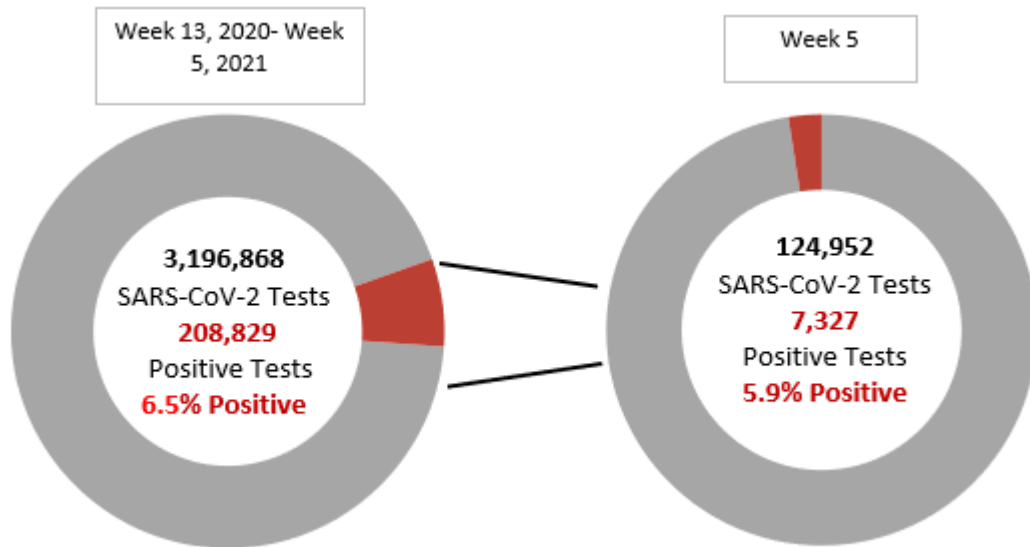
	CCA	CCA1	CCA2	CCA3	CCA4	CCA5	CCA6	CCA7	CCA8
	LHO	Dublin South	Dublin South East	Dublin South City	Dublin South West	Dublin West	Dublin North West	Dublin North Central	Dublin North
2020	Notification Week 48	38.2	69.5	34.0	44.1	35.4	43.8	64.0	32.0
	49	41.9	80.8	32.7	38.5	44.4	60.7	69.2	44.8
	50	29.4	75.2	30.7	26.7	42.5	34.7	62.1	43.6
	51	48.5	142.3	46.7	44.7	62.4	104.5	133.3	77.2
	52	127.1	321.7	120.1	134.9	171.9	172.4	241.3	106.9
	53	196.2	460.0	217.4	205.1	198.9	328.0	415.3	231.9
2021	1	798.8	1742.1	953.7	1146.7	1164.5	1441.7	1450.4	990.9
	2	318.9	776.0	390.8	519.6	574.2	731.7	705.8	488.9
	3	234.4	501.2	291.5	285.3	411.3	504.3	502.0	281.7
	4	149.2	269.2	132.7	203.2	307.7	306.8	295.0	181.4
	5	81.6	231.2	108.7	149.2	204.1	264.4	266.5	145.1

**Figure 11:** Weekly Incidence rates of confirmed COVID-19 cases per 100,000 population cases by Dublin Local Health Offices (LHOs) notified in Ireland between week 48, 2020 and week 5, 2021.

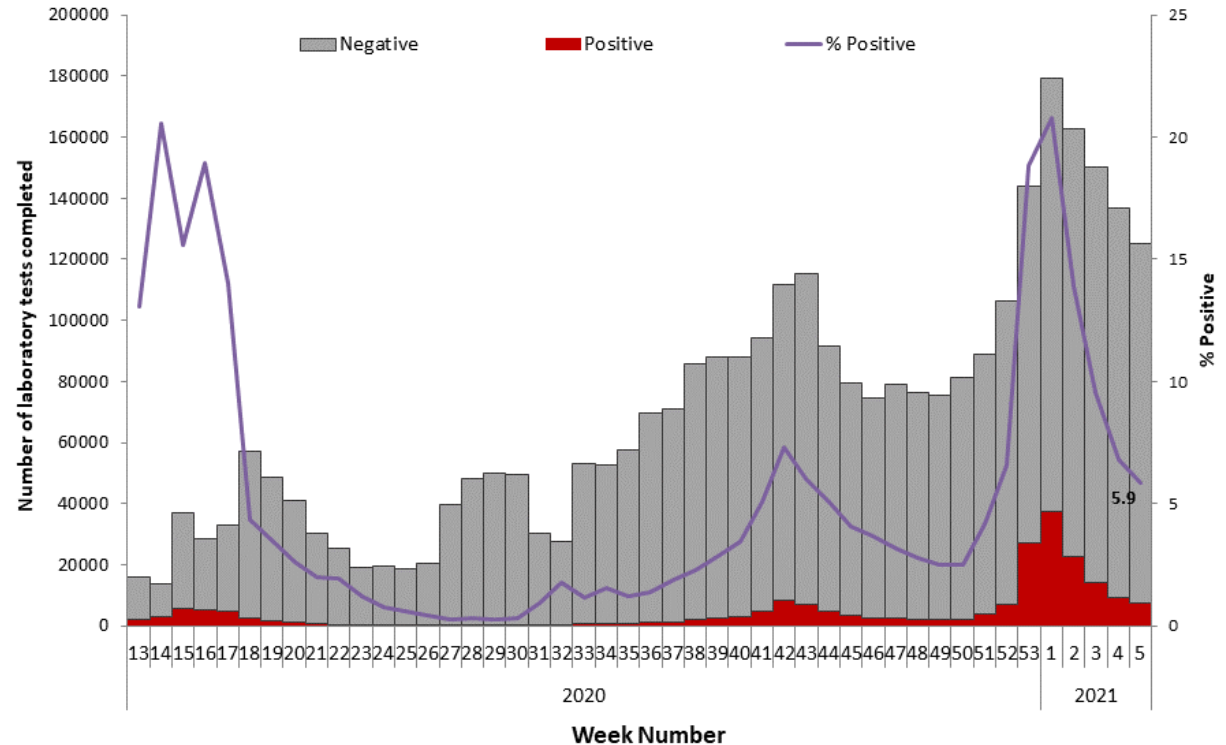
At the end of week 53 a significant number of cases were awaiting processing, as a result the incidence rates reported in week 53 are reduced and the incidence rates reported in week 1 are inflated.

**Note:** Local health offices (LHOs) came into operation on 1st September 2005, replacing Community Care Areas (CCAs). LHO population denominators are used in this report rather than CCA population denominators. The LHO rates were calculated using Census 2016 LHO denominator data extracted from the HSE Health Atlas and are not a direct match to the corresponding CCAs.

# Laboratory data for COVID-19 cases



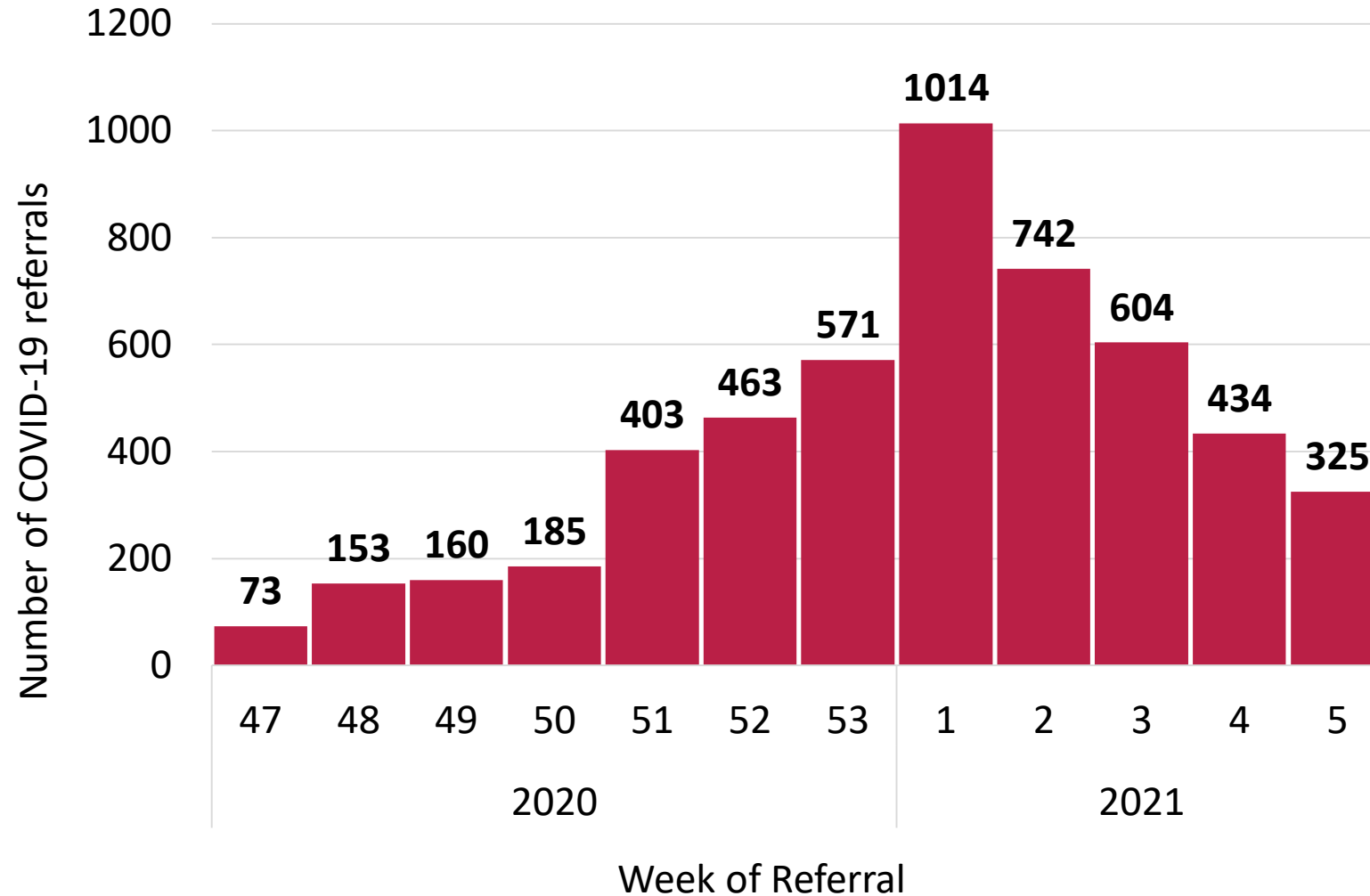
**Figure 12a:** Number of SARS-CoV-2 tests and positive tests\* in Ireland between week 13, 2020 and week 5, 2021.



**Figure 12b:** Number of SARS-CoV-2 negative and positive tests\* completed in Ireland between week 13, 2020 and week 5, 2021.

\*Positive tests refers to all positive specimens and includes duplicates and individuals who were retested

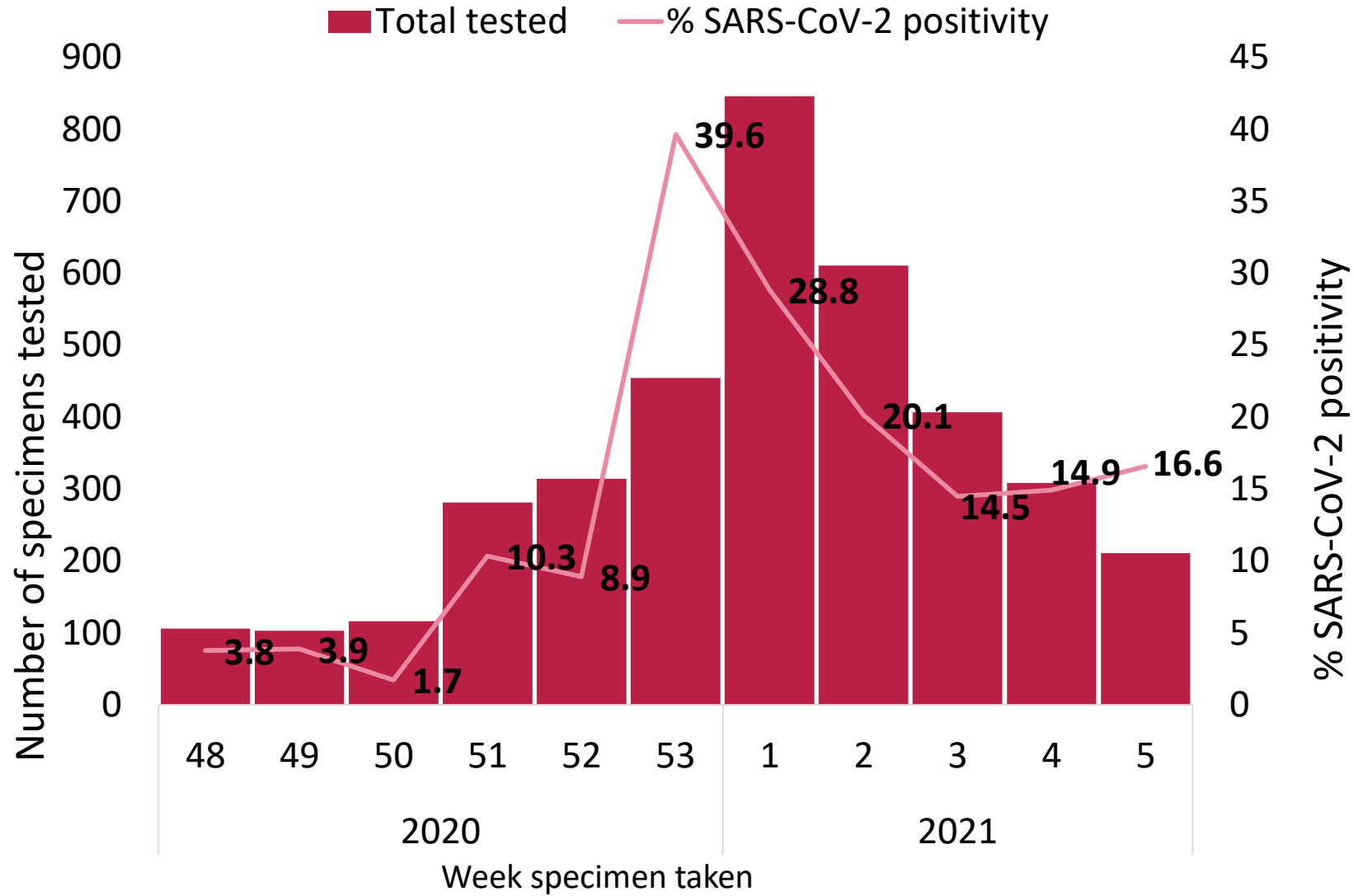
# Number of sentinel GP COVID-19 referrals by week of consultation



- The Irish Sentinel GP Surveillance Scheme is a collaboration between the Health Protection Surveillance Centre, the National Virus Reference Laboratory and the Irish College of General Practitioners.
- The sentinel GP network comprises 60 general practices and 166 practitioners, covering 6.6% of the national population (CSO Census 2016).

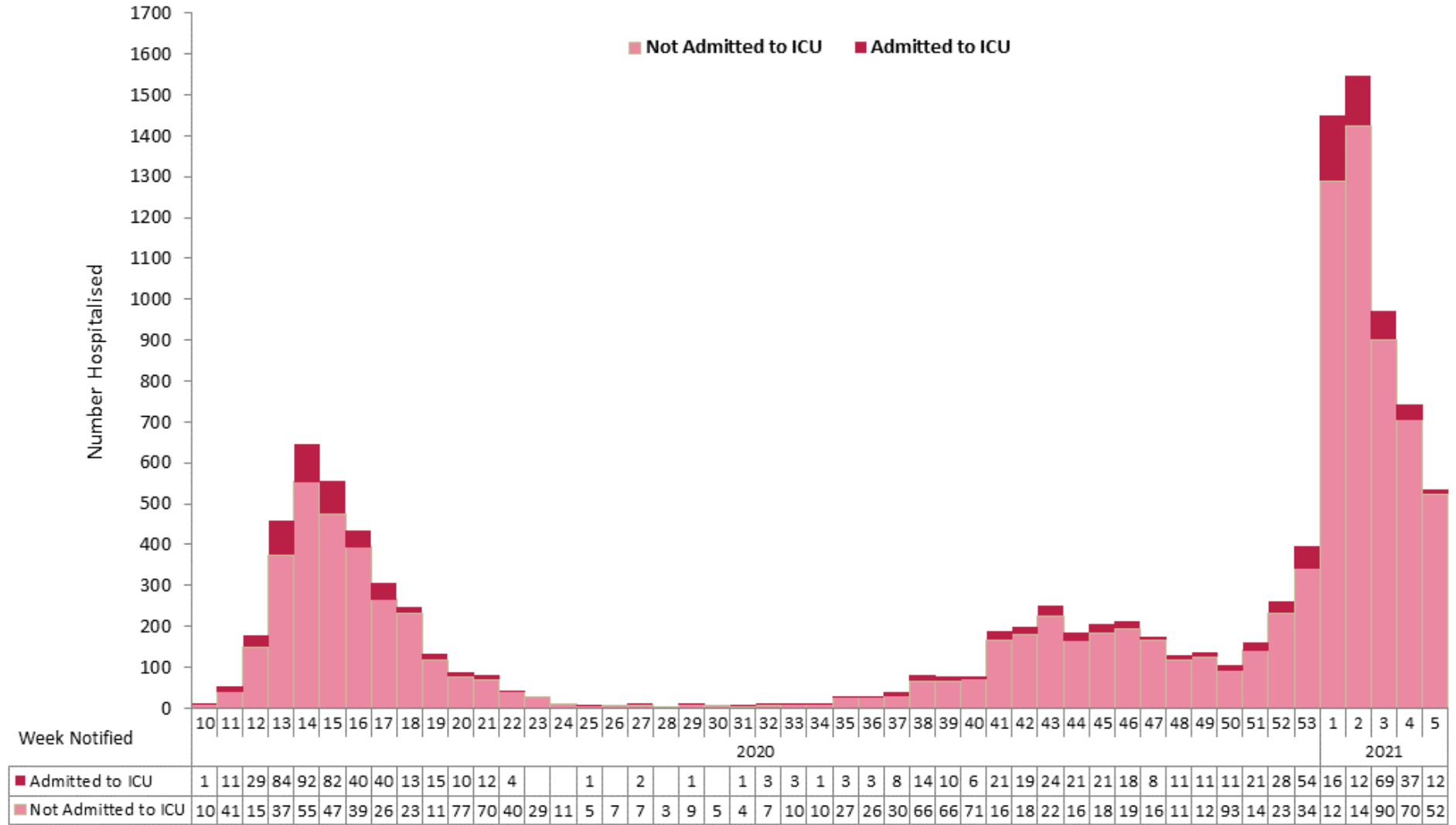
**Figure 13a:** Number of sentinel GP COVID-19 referrals by week of consultation, weeks 47 2020-week 5 2021, Ireland. The epidemiological week is Monday-Sunday (ISO week) in line with influenza/COVID-19 international reporting to European Centre for Disease Prevention and Control (ECDC).

# % SARS-CoV-2 positivity data from sentinel GP COVID-19 referrals tested by NVRL



**Figure 13b:** % SARS-CoV-2 positivity data from sentinel GP COVID-19 referrals tested by the NVRL by week specimen was taken, weeks 48 2020 to week 5 2021. The Epidemiological week is Monday to Sunday (ISO week) in line with influenza/COVID-19 international reporting to ECDC.

# Hospitalisations and ICU admissions among COVID-19 cases



**Figure 14:** Number of hospitalised COVID-19 cases based on ICU admission status in Ireland between week 10, 2020 and week 5, 2021\*

\*Please note that the most recent weeks may not yet reflect all admissions.



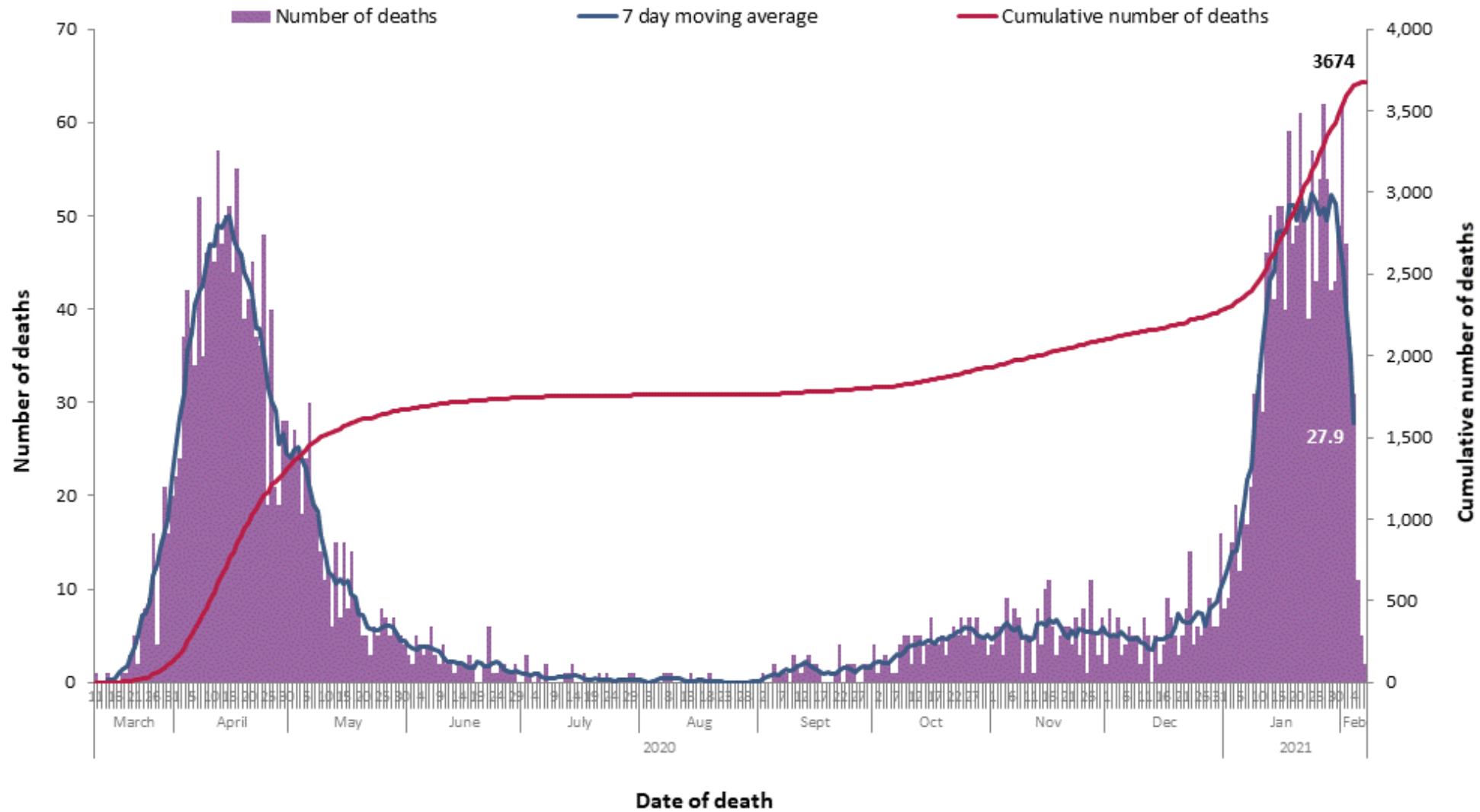
## Deaths among COVID-19 cases

	Number	Percent
Total number of deaths	3,687	
confirmed	3,420	92.8
probable	96	2.6
possible	171	4.6
Number hospitalised who died	1793	48.6
admitted to ICU who died	292	7.9
not admitted to ICU who died	1501	40.7
Number of imported cases who died	5	0.1
Number of HCWs who died	11	0.3
Number with underlying conditions who died	3,022	82.0
Males who died	1931	52.4
M:F ratio	1.10	
Median age (years)	83	
Mean age (years)	81	
Age range (years)	17 - 105	

**Table 3:** Summary of deaths in all COVID-19 cases notified in Ireland between week 10, 2020 and week 5, 2021.

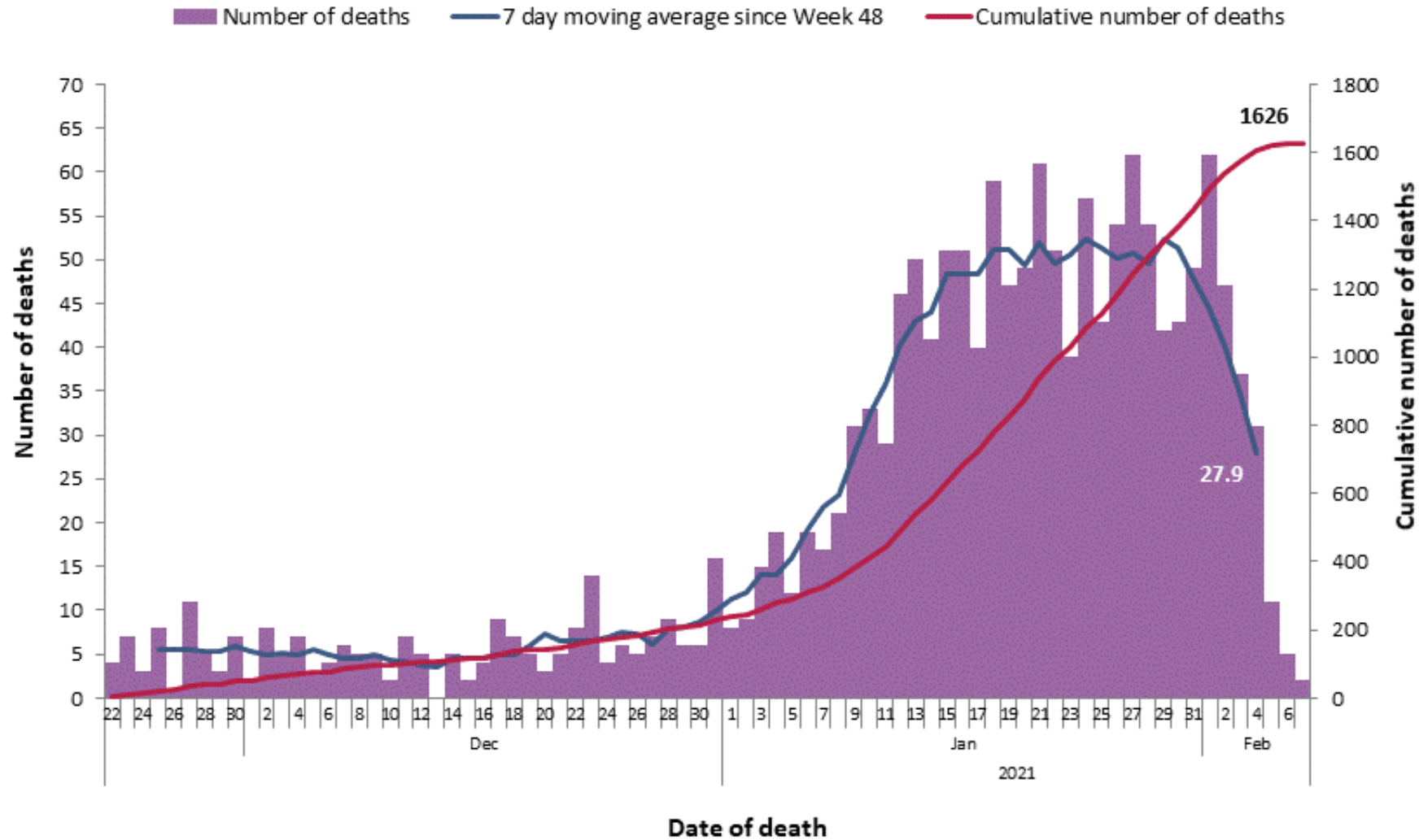
Age group (years)	Female	Male	Total	Percent
<35 yrs	7	5	12	<b>0.3</b>
35-44 yrs	11	12	23	<b>0.6</b>
45-54 yrs	22	34	56	<b>1.5</b>
55-64 yrs	60	105	165	<b>4.5</b>
65-74 yrs	197	366	563	<b>15.3</b>
75-84 yrs	544	725	1269	<b>34.4</b>
85+ yrs	913	684	1597	<b>43.3</b>
Unknown	2	0	2	<b>0.1</b>
Total	1756	1931	3687	<b>100.0</b>
<b>Percent</b>	<b>47.7</b>	<b>52.3</b>		

**Table 4:** Number of deaths in all COVID-19 cases by sex and age group notified in Ireland between week 10, 2020 and week 5, 2021.



**Figure 15a:** Daily and 7-day moving average number of deaths among COVID-19 cases notified in Ireland by date of death and cumulative total between week 10, 2020 and week 5, 2021.

\* Date of death is not yet available for 13 cases



**Figure 15b:** Daily and 7-day moving average number of deaths among COVID-19 cases notified in Ireland by date of death and cumulative total, between week 48, 2020 and week 5, 2021.

Please note: a lag in time between reporting of deaths and data extraction is expected and as such most recent dates will not yet reflect all deaths on that date.

**Please refer to the Health Protection Surveillance (HPSC) website for specific reports on**

- [14 Day report](#) epidemiology of COVID-19 in Ireland
- [Outbreaks/clusters](#) in Ireland COVID-19 weekly report
- [Underlying Conditions](#) in confirmed cases of COVID-19 in Ireland weekly report
- [Healthcare Workers](#) in Ireland COVID-19 weekly report

## **Acknowledgements**

Sincere thanks are extended to all those who are participating in the collection of data and reporting of data used in these reports. This includes the HSE COVID-19 Contact Management Programme (CMP), staff in ICU units, notifying clinicians, laboratory staff, public health doctors, nurses, surveillance scientists, microbiologists and administrative staff.

**Report prepared by COVID-19 Epidemiology Team, HPSC**

## Technical Notes

### 1. Data Source

- Data are based on statutory notifications and were extracted from Computerised Infectious Disease Reporting (CIDR) system at 09:30 on 18/01/2021. Data are provisional and subject to ongoing review, validation and update. As a result, figures in this report may differ from previously published figures.
- Slides 23 and 24 include data reported from the Irish sentinel GP network.

### 2. Epidemiological date

- Epidemiological date is based on the earliest of dates available on the case and taken from date of onset of symptoms, date of diagnosis, laboratory specimen collection date, laboratory received date, laboratory reported date or event creation date/notification date on CIDR. By using this date rather than event creation/ notification date, adjusts for any delays in testing/notification.

### 3. Population data

- Population data were taken from Census 2016. Data were aggregated into the following age groups for the analysis: 0-4 years, 5-12 years, 13-18 years, 19-24 years, 25-34 years, 35-44 years, 45-54 years, 55-64 years, 65-74 years, 75-84 years and  $\geq 85$  years.

## Appendix 1: Epidemiological weeks, start and end dates, 2021

- Note: Epidemiological week is from Sunday to Saturday in line with the [Infectious Disease Regulations 1981](#) and subsequent amendments

Year	Week	Start date	End date
2021	1	03/01/2021	09/01/2021
2021	2	10/01/2021	16/01/2021
2021	3	17/01/2021	23/01/2021
2021	4	24/01/2021	30/01/2021
2021	5	31/01/2021	06/02/2021
2021	6	07/02/2021	13/02/2021
2021	7	14/02/2021	20/02/2021
2021	8	21/02/2021	27/02/2021
2021	9	28/02/2021	06/03/2021
2021	10	07/03/2021	13/03/2021
2021	11	14/03/2021	20/03/2021
2021	12	21/03/2021	27/03/2021
2021	13	28/03/2021	03/04/2021
2021	14	04/04/2021	10/04/2021
2021	15	11/04/2021	17/04/2021
2021	16	18/04/2021	24/04/2021
2021	17	25/04/2021	01/05/2021
2021	18	02/05/2021	08/05/2021
2021	19	09/05/2021	15/05/2021
2021	20	16/05/2021	22/05/2021
2021	21	23/05/2021	29/05/2021
2021	22	30/05/2021	05/06/2021
2021	23	06/06/2021	12/06/2021
2021	24	13/06/2021	19/06/2021
2021	25	20/06/2021	26/06/2021
2021	26	27/06/2021	03/07/2021

Year	Week	Start date	End date
2021	27	04/07/2021	10/07/2021
2021	28	11/07/2021	17/07/2021
2021	29	18/07/2021	24/07/2021
2021	30	25/07/2021	31/07/2021
2021	31	01/08/2021	07/08/2021
2021	32	08/08/2021	14/08/2021
2021	33	15/08/2021	21/08/2021
2021	34	22/08/2021	28/08/2021
2021	35	29/08/2021	04/09/2021
2021	36	05/09/2021	11/09/2021
2021	37	12/09/2021	18/09/2021
2021	38	19/09/2021	25/09/2021
2021	39	26/09/2021	02/10/2021
2021	40	03/10/2021	09/10/2021
2021	41	10/10/2021	16/10/2021
2021	42	17/10/2021	23/10/2021
2021	43	24/10/2021	30/10/2021
2021	44	31/10/2021	06/11/2021
2021	45	07/11/2021	13/11/2021
2021	46	14/11/2021	20/11/2021
2021	47	21/11/2021	27/11/2021
2021	48	28/11/2021	04/12/2021
2021	49	05/12/2021	11/12/2021
2021	50	12/12/2021	18/12/2021
2021	51	19/12/2021	25/12/2021
2021	52	26/12/2021	01/01/2022