

Epidemiology of COVID-19 Outbreaks/Clusters in Ireland - Weekly Report. Week 26, 2022

Weekly COVID-19 Outbreak Report for week ending 02/07/2022

Prepared by HPSC on 06/07/2022

Please note: Data are provisional

This report includes data extracted from the Computerised Infectious Disease Reporting (CIDR) on 06/07/2022 up to midnight 02/07/2022.

Reference dates:

Waves	Dates
Wave 1 (Week 10 – 31 2020)	01/03/2020 – 01/08/2020
Wave 2 (Week 32 – 47 2020)	02/08/2020 – 21/11/2020
Wave 3 (Week 48 2020 – Week 25 2021)	22/11/2020 – 26/06/2021
Wave 4 (Week 26 – 50 2021)	27/06/2021 – 18/12/2021
Wave 5 (Week 51 2021 onwards)	19/12/2021 onwards

The HPSC Epidemiology of COVID-19 Data Hub provides data on non-private household outbreaks. The [Data Hub](#) is updated Monday to Friday.

Regional Departments of Public Health are currently prioritising the investigation and reporting of outbreaks in settings that benefit most from public health and clinical intervention. These settings include acute hospitals, nursing homes, community hospital/long-stay units, residential institutions, other healthcare settings, vulnerable populations, special educational needs schools/classes and childcare facilities. For this reason, outbreaks in other settings may be underestimated. This report focuses on these key settings/groups.

In addition, due to the surge in case numbers in early 2022 and changes in testing policy, all outbreak cases may not be linked to their outbreak on CIDR. Due to these changes, an interim measure has been applied whereby the higher number between aggregate and outbreak linked confirmed case numbers is used in outbreak settings (report pages 9-19).

Due to the cyber-attack on the HSE IT systems on 14/05/2021, CIDR was unavailable for the reporting of COVID-19 outbreaks from 14/05/2021 to the 28/06/2021. As a result, there has been a delay in reporting for many outbreaks on CIDR. To account for this, outbreak week for all outbreaks created between May 14th and October 9th 2021 is based on the following algorithm: earliest of 1. outbreak recognition date; 2. first reported date; 3. outbreak created date. Outbreak week is based on outbreak created date for all outbreaks created on or before May 13th 2021, and on or after October 10th 2021.



Please note COVID-19 outbreaks and cases are continuously validated/updated on CIDR.

The COVID-19 outbreak definition is available in [Appendix 2](#) of this report and on the [HPSC website](#).

Sincere thanks are extended to all those who are participating in the collection of data and reporting of data used in these reports. This includes the HSE COVID-19 Contact Management Programme (CMP), staff in ICU units, notifying clinicians, laboratory staff, public health doctors, nurses, surveillance scientists, microbiologists and administrative staff.

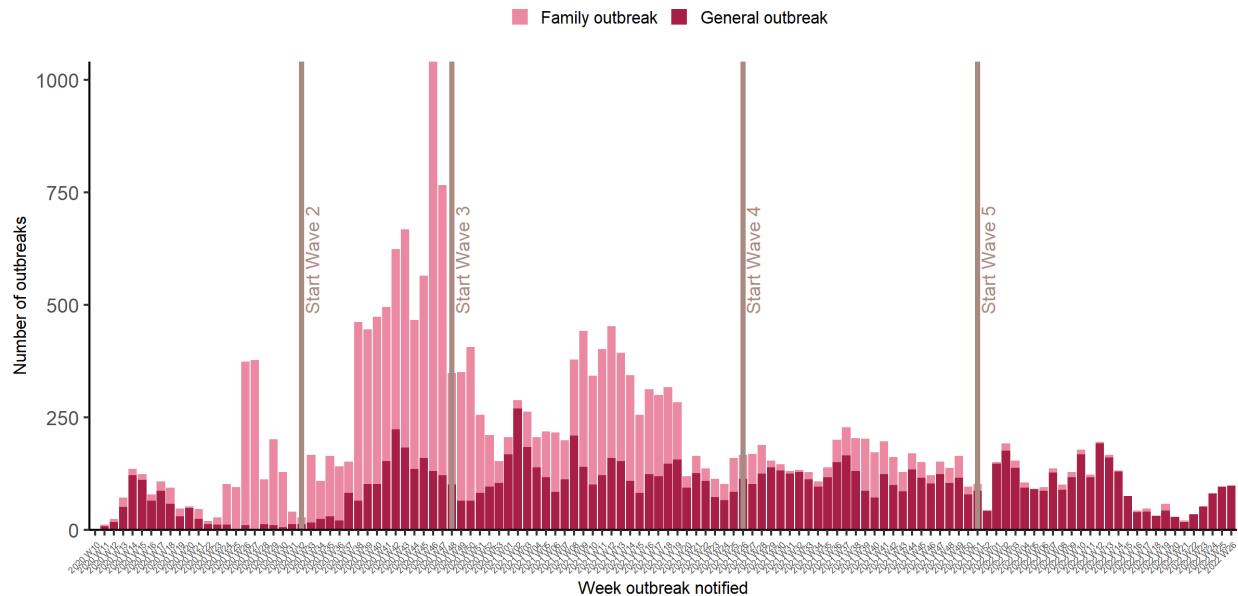


Figure 1: Epi-curve of COVID-19 outbreaks in all settings notified in Ireland by week of notification and outbreak type (see technical note 5, [Appendix 2](#)) to end Week 26 2022, N=24,060. Vertical lines indicate the timeline of epidemic waves of COVID-19 infection in Ireland. Second wave of infection commenced in Week 32 2020 (week beginning 02/08/2020); the third wave commenced in Week 48 2020 (week beginning 22/11/2020); the fourth wave commenced Week 51 2021 (week beginning 27/06/2021); the fifth wave commenced Week 51 2021 (week beginning 19/12/2021)). *Data source: CIDR*

Key points

24,060 COVID-19 outbreaks have been reported in Ireland since Week 10, 2020 (Figure 1, [Appendix 1](#)).

Summary Wave 5 (Week 51 2021 to Week 26 2022)

2,753 COVID-19 outbreaks have been reported from Week 51 2021 onwards and key outbreak locations are as follows:

- 460 (16.7%) were reported in hospitals
- 753 (27.4%) were reported in nursing homes
- 111 (4.0%) were reported in community hospital/long-stay units
- 876 (31.8%) were reported in residential institutions
- 198 (7.2%) were reported in 'other' healthcare services
- 119 (4.3%) were reported in schools
- 14 (0.5%) were reported in childcare facilities
- 222 (8.1%) were reported in a range of other settings

2,436 outbreaks have been closed and **317** are open (See [Appendix 1](#), Table A for breakdown of outbreaks by location and outbreak status. Note that it is common practice not to close private house outbreaks on CIDR due to the large volume of outbreaks in this category).

Summary Week 26 2022

In **Week 26** 2022, there were **98** COVID-19 outbreaks notified.

The overall number of outbreaks notified in Week 26 2022 increased by 2 compared to Week 25 2022. There were:

- 25 outbreaks associated with acute hospitals notified
- 21 outbreaks associated with nursing homes notified
- 2 outbreaks associated with community hospital/long-stay units notified
- 36 outbreaks associated with residential institutions notified
- 10 outbreaks associated with other healthcare services notified
- 1 outbreak associated with schools notified
- 3 outbreaks associated with other settings notified (all travel related)

COVID-19 Outbreaks/Clusters in Residential Facilities and Hospital settings in Ireland

A summary of COVID-19 outbreaks linked to nursing homes, acute hospitals, community hospital/long-stay units, and other residential institutions is shown in Figure 2 and in the subsequent “Focus” sections, Tables 3-5 and Figures 3-5.

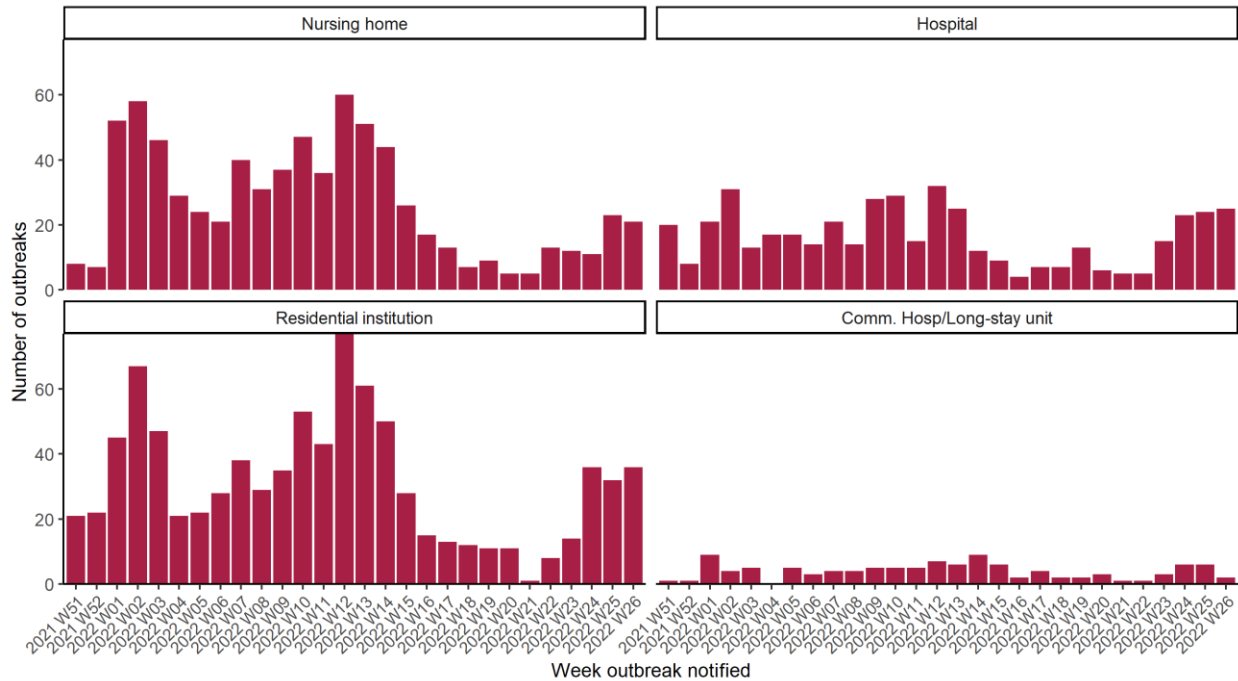


Figure 2: Epi-curve of COVID-19 outbreaks in: Acute Hospitals, Nursing Homes, Community Hospitals/Long-stay units and Residential institutions notified in Ireland by week of notification, Wave 5. *Data source: CIDR*

Table 1: Number of COVID-19 outbreaks notified in Ireland by outbreak location and by week of notification Wave 5, and difference in number of outbreaks notified in Week 26 2022 compared to the previous week, N=2,753. *Data source: CIDR*

Outbreak location	Total Week 51 2021 - Week 18 2022	2022 W19	2022 W20	2022 W21	2022 W22	2022 W23	2022 W24	2022 W25	2022 W26	Difference in number of outbreaks notified since last week	Total wave 5: Week 51 2021 - Week 26 2022
Residential institution	727	11	11	1	8	14	36	32	36	4	876
Hospital	344	13	6	5	5	15	23	24	25	1	460
Other healthcare service	157	3	3	1	4	8	3	9	10	1	198
Nursing home	654	9	5	5	13	12	11	23	21	-2	753
Comm. Hosp/Long-stay unit	87	2	3	1	1	3	6	6	2	-4	111
Other school type	26	0	0	0	0	0	0	0	0	0	26
Special education	87	0	1	0	1	0	2	1	1	0	93
Total School	113	0	1	0	1	0	2	1	1	0	119
Childcare facility	13	1	0	0	0	0	0	0	0	0	14
Other location	190	18 [†]	0	8 [*]	2	0	0	1	3	2	222
Total	2,285	57[†]	29	21[*]	34	52	81	96	98	2	2,753

*6 outbreaks were late notifications from February 2021. †17 outbreaks were late notifications from Dec 2020 to Feb 2021 (16 in other locations and one in a residential institution)

Table 2A: Number of COVID-19 outbreaks by outbreak location and HSE-Area notified in Ireland, Wave 5. N=2,753. *Data source: CIDR*

Outbreak location	HSE E	HSE M	HSE MW	HSE NE	HSE NW	HSE SE	HSE S	HSE W	Total
Residential institution	248	54	88	138	76	106	112	54	876
Nursing home	247	49	77	72	33	83	91	101	753
Hospital	200	6	41	56	47	29	28	53	460
Other healthcare service	26	3	29	34	7	19	53	27	198
Comm. Hosp/Long-stay unit	11	0	17	1	22	19	33	8	111
Other school type	12	1	1	3	2	0	6	1	26
Special education	20	2	21	7	6	7	26	4	93
Total School	32	3	22	10	8	7	32	5	119
Childcare facility	1	1	1	1	3	1	4	2	14
Other location	9	1	43	31	8	3	43	84	222
Total	774	117	318	343	204	267	396	334	2,753

Table 2B: Number of COVID-19 outbreaks by outbreak location and HSE-Area notified in Ireland during Week 26 2022, N=98. *Data source: CIDR*

Outbreak location	HSE E	HSE M	HSE MW	HSE NE	HSE NW	HSE SE	HSE S	HSE W	Total
Hospital	7	1	3	2	3	5	1	3	25
Nursing home	7	1	2	3	1	1	4	2	21
Comm. Hosp/Long-stay unit	1	0	0	0	0	0	1	0	2
Residential institution	6	8	1	4	1	2	8	6	36
Other healthcare service	3	0	0	2	1	1	3	0	10
Other school type	0	0	0	0	0	0	0	0	0
Special education	0	0	0	0	0	0	1	0	1
Total School	0	0	0	0	0	0	1	0	1
Childcare facility	0	0	0	0	0	0	0	0	0
Other location	0	0	0	0	0	0	3	0	3
Total	24	10	6	11	6	9	21	11	98

Focus on COVID-19 Outbreaks in Nursing Homes and Community Hospitals

Table 3: Number of COVID-19 outbreaks and laboratory confirmed cases¹. in nursing homes and community hospital/long-stay units in Ireland, Wave 5. *Data source: CIDR*

Outbreak location	Total number of outbreaks week 26	Range in number of confirmed cases# week 26	Total number of outbreaks since start wave 5	Total number of open outbreaks	Range in number of confirmed cases# in open outbreaks
Nursing home	21	0 - 20	753	72	0 - 45
Comm. Hosp/Long-stay unit	2	3 - 3	111	13	2 - 10
Total	23	0 - 20	864	85	0 - 45

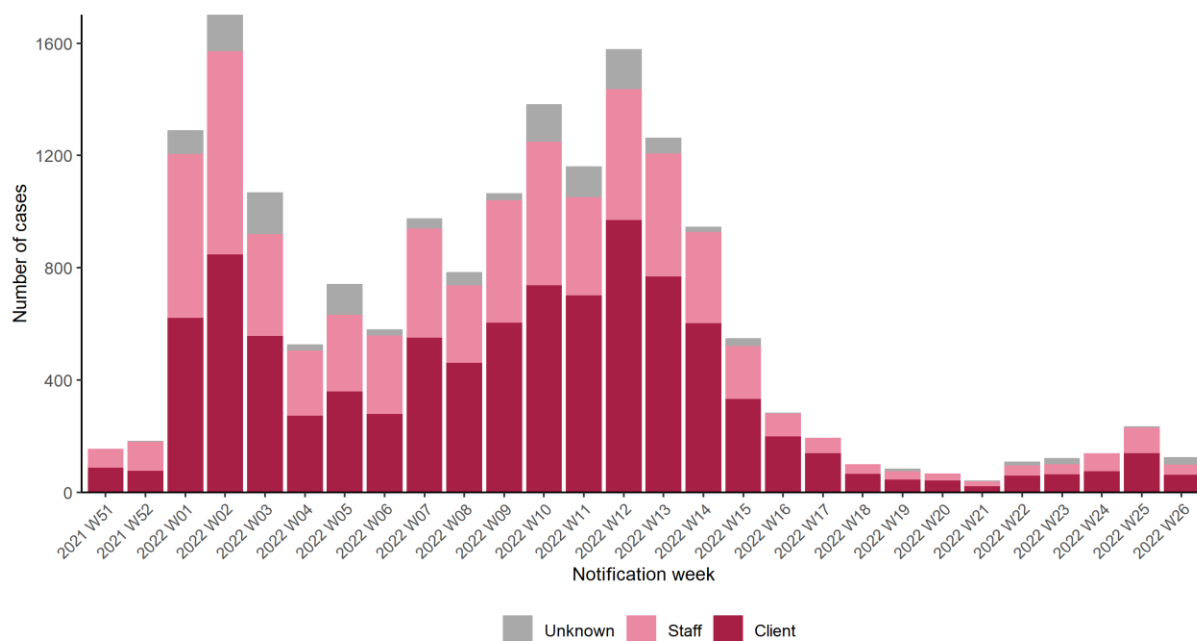


Figure 3: Epi-curve of confirmed COVID-19 cases linked to outbreaks in nursing homes and community hospital/long-stay units by staff/client status and date of notification, Wave 5. *Data source: CIDR*

¹ Note re Tables 3-8. due to the surge in case numbers in early 2022 and changes in testing policy, all outbreak cases may not be linked to their outbreak on CIDR. Due to these changes, an interim measure has been applied whereby the higher number between aggregate and outbreak linked confirmed case numbers is used in outbreak settings. #n/a is used where there were no outbreaks in a category or where there are no confirmed cases currently linked to any outbreak in that category (see technical note 6, [Appendix 2](#))

Focus on COVID-19 Outbreaks in Acute Hospitals

Table 4: Number of COVID-19 outbreaks and laboratory confirmed cases in acute hospital settings in Ireland, Wave 5. *Data source: CIDR*

Outbreak location	Total number of outbreaks week 26	Range in number of confirmed cases# week 26	Total number of outbreaks since start wave 5	Total number of open outbreaks	Range in number of confirmed cases# in open outbreaks
Hospital	25	0 - 17	460	81	0 - 44

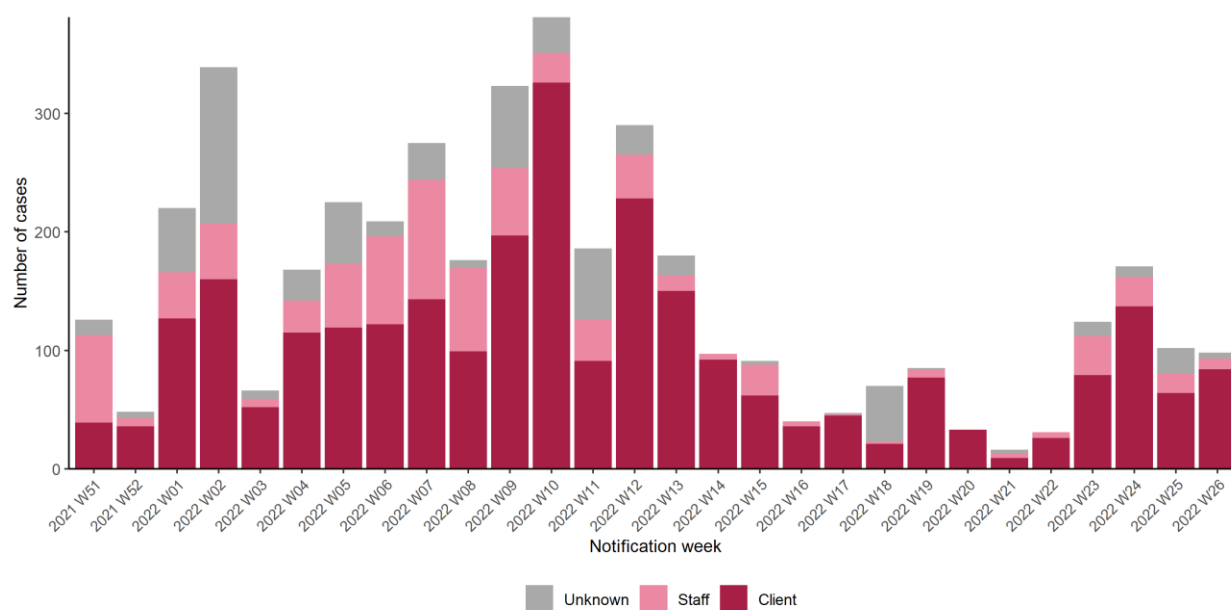


Figure 4: Epi-curve of confirmed COVID-19 cases linked to outbreaks in hospitals by staff/client status and date of notification, Wave 5. *Data source: CIDR*

Focus on COVID-19 Outbreaks in Residential Institutions (please see footnote²)

Table 5: Number of COVID-19 outbreaks and laboratory confirmed cases in residential institutions in Ireland, Wave 5. *Data source: CIDR*

Type of residential facility	Total number of outbreaks week 26	Range in number of confirmed cases# week 26	Total number of outbreaks since start wave 5	Total number of open outbreaks	Range in number of confirmed cases# in open outbreaks
Centre for disabilities	27	0 - 16	550	62	0 - 16
Mental health facility	6	3 - 6	111	21	2 - 43
Children's / TUSLA residential centre	1	<5	44	<5	<5
Centre for older people	0	0	29	3	0 - 5
Not specified	0	0	4	0	0
Other	0	0	39	4	1 - 12
Women/ children's refuge	0	0	6	0	0
Total	34	0 - 16	783	92	0 - 43

² This section focuses on the following residential settings: Centres for disabilities, Centres for older people, Children's/TUSLA residential centres and mental health facilities. Homeless services, addiction services, direct provision centres and prisons are reported in the Focus on Vulnerable Populations section.

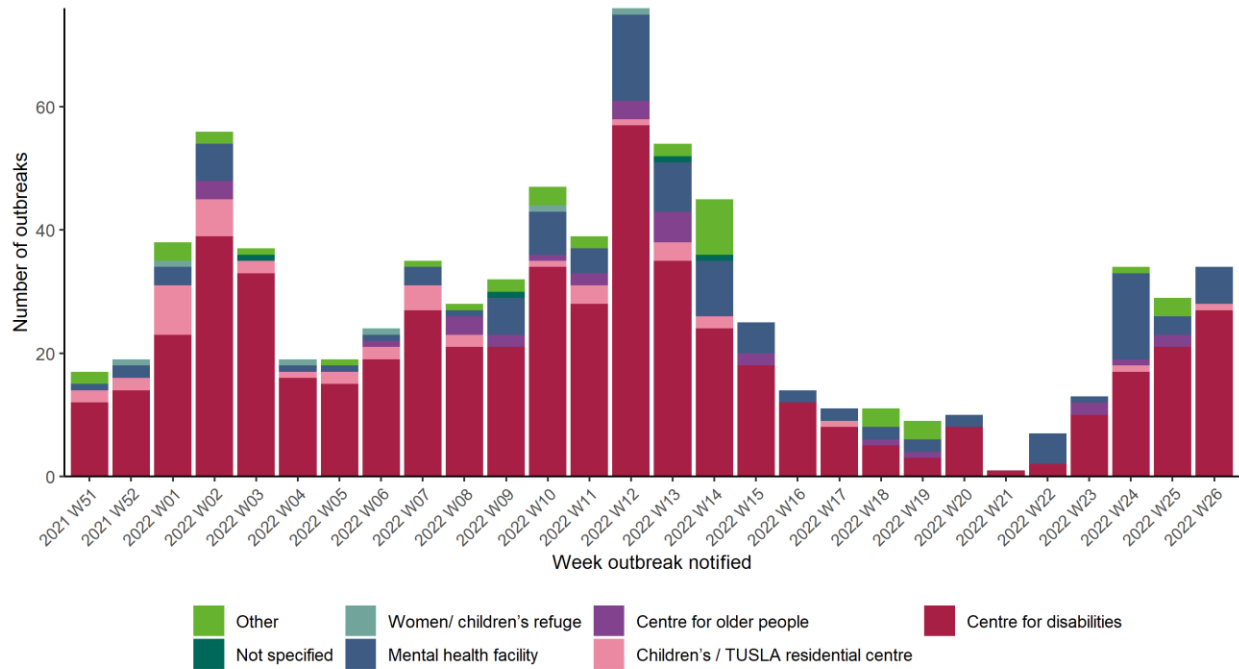


Figure 5: Number of COVID-19 outbreaks in residential institutions by type of residential institution in Ireland, Wave 5. *Data source: CIDR*

Focus on COVID-19 Outbreaks associated with Other Healthcare Settings

Table 6: Number of COVID-19 outbreaks and laboratory confirmed cases associated with other healthcare settings in Ireland, Wave 5. *Data source: CIDR*

Outbreak location	Total number of outbreaks week 26	Range in number of confirmed cases# week 26	Total number of outbreaks since start wave 5	Total number of open outbreaks	Range in number of confirmed cases# in open outbreaks
People with disabilities	8	2 - 6	128	18	2 - 7
Clients of home care services	0	0	29	1	<5
Not specified/Other	2	<5	25	2	<5
Clients of mental health facilities	0	0	16	2	2 - 4
Total	10	1 - 6	198	23	1 - 7

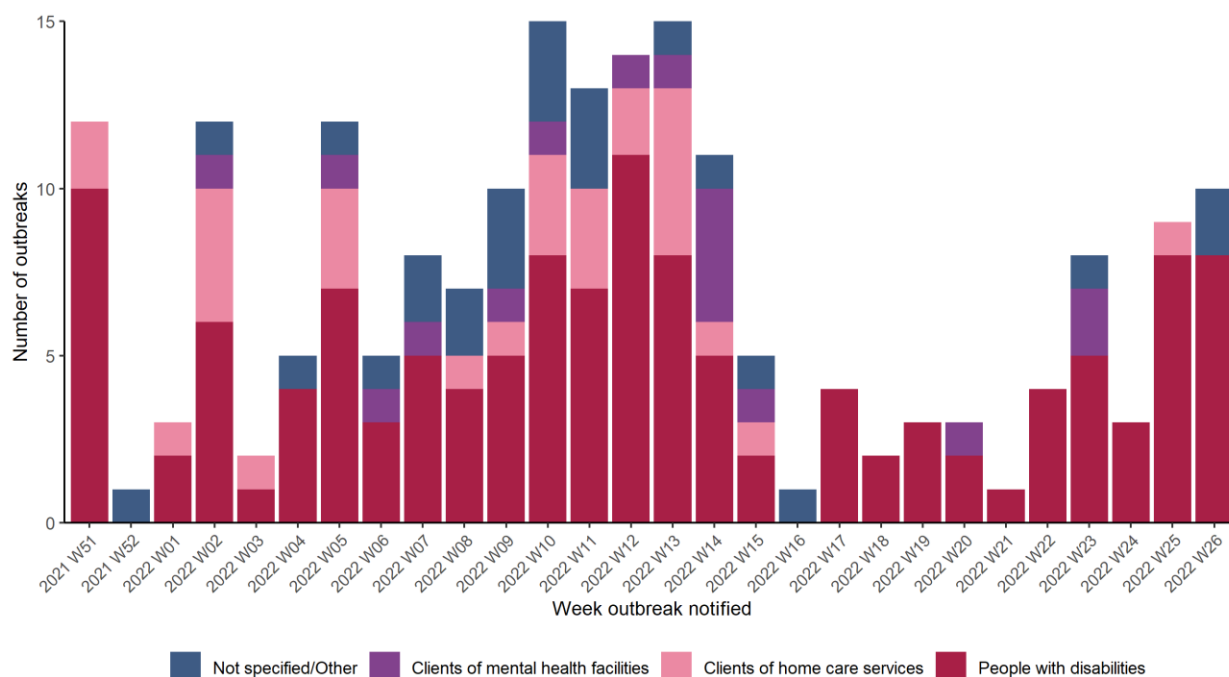


Figure 6: Number of COVID-19 outbreaks in 'Other healthcare' settings by type of setting in Ireland, Wave 5. *Data source: CIDR*

Focus on COVID-19 Outbreaks associated Other Vulnerable Populations

Table 7: Number of COVID-19 outbreaks and laboratory confirmed cases in settings involving vulnerable populations, including: the Irish Traveller community; Roma community; asylum seekers/refugees; migrants (including undocumented); the homeless; people with addictions and; prison staff/prisoners in Ireland, Wave 5. *Data source: CIDR*

Vulnerable populations	Total number of outbreaks week 26	Range in number of confirmed cases# week 26	Total number of outbreaks since start wave 5	Total number of open outbreaks	Range in number of confirmed cases# in open outbreaks
Asylum seekers / refugees	1	<5	27	3	3 - 24
Prison staff and prisoners	1	10	20	3	10 - 56
Homeless	0	0	28	1	<5
Irish Travellers	0	0	110	13	2 - 14
Migrants (including undocumented)	0	0	4	1	<5
People with addictions	0	0	16	3	4 - 13
Roma community	0	0	18	1	<5
Total	2	3 - 10	223	25	2 - 56

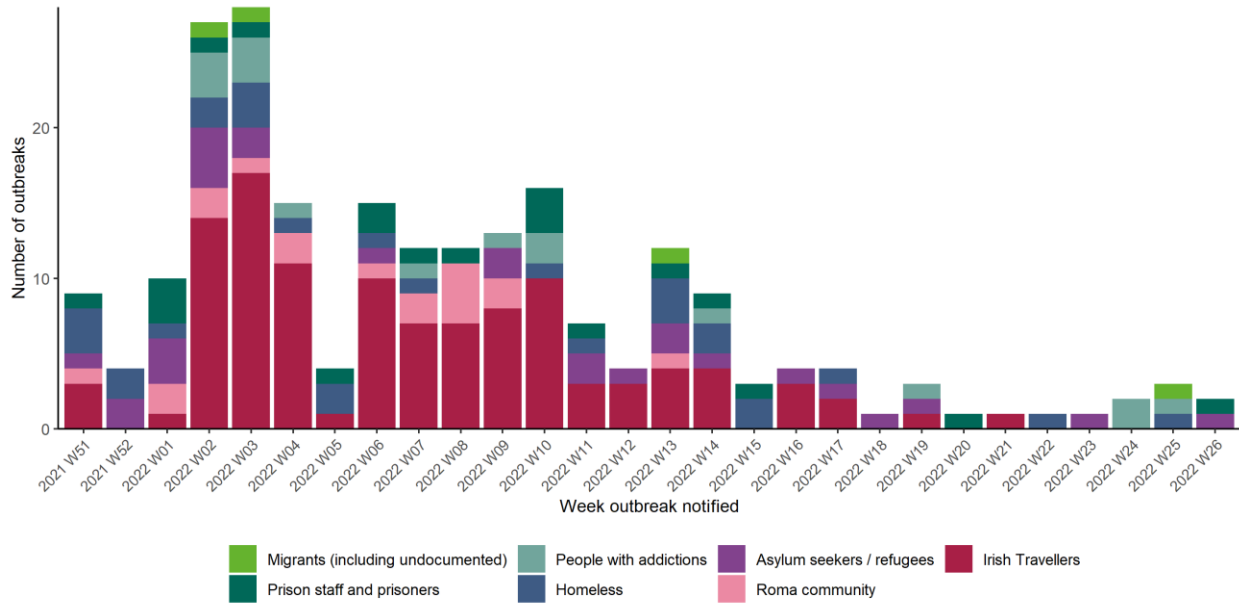


Figure 7: Number of COVID-19 outbreaks associated with other vulnerable populations in Ireland, Wave 5. *Data source: CIDR*

Focus on COVID-19 Outbreaks associated with School Children (+/- staff), and Childcare Facilities

Table 8: Number of COVID-19 outbreaks and laboratory confirmed cases associated with school children (+/- staff) and childcare facilities in Ireland, Wave 5. *Data source: CIDR*

Type of educational facility	Total number of outbreaks week 26	Range in number of confirmed cases# week 26	Total number of outbreaks since start wave 5	Total number of open outbreaks	Range in number of confirmed cases# in open outbreaks
Special education	1	<5	93	5	1 - 3
Childcare facility	0	0	14	0	0
Other school type	0	0	26	0	0
Total	1	<5	133	5	1 - 3

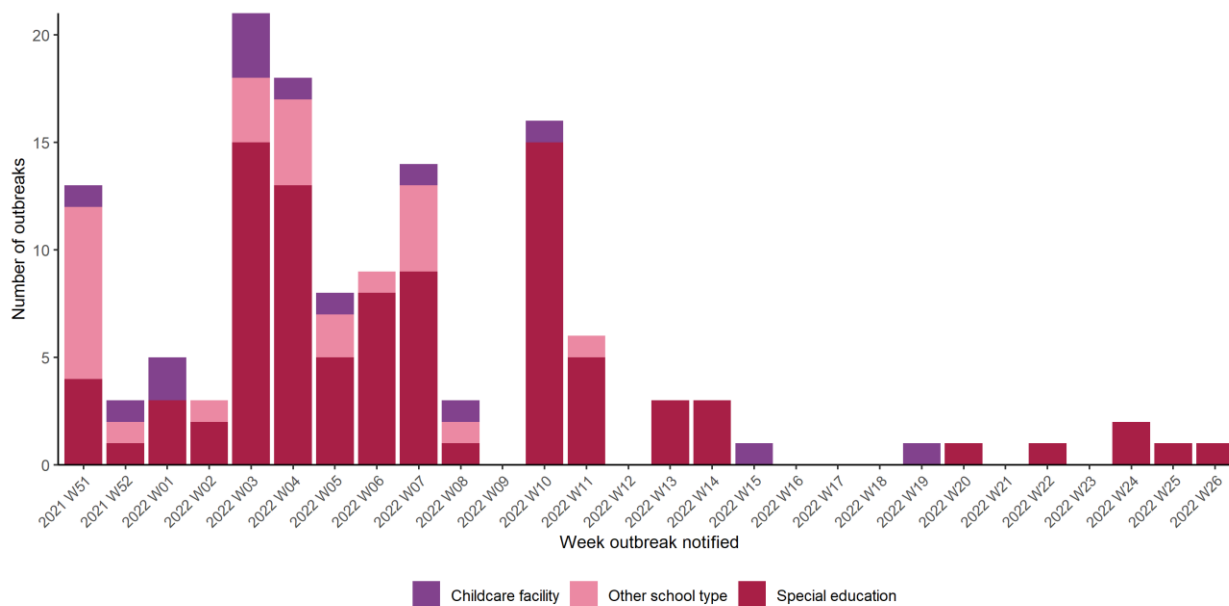


Figure 8: Number of COVID-19 outbreaks in school and childcare facility settings in Ireland, Wave 5. *Data source: CIDR*

Appendices

Appendix 1

Table A: Number of COVID-19 outbreaks notified in Ireland by outbreak location and closure status from Week 10 2022 to Week 26, 2022, N=24,060. *Data source: CIDR*

Outbreak location	Closed	Open	Total
Comm. Hosp/Long-stay unit	199	13	212
Hospital	994	82	1,076
Nursing home	1,430	72	1,502
Other healthcare service	502	23	525
Residential institution	1,702	105	1,807
Childcare facility	653	0	653
School	1,387	6	1,393
University/College	68	0	68
Workplace	1,266	0	1,266
Travel related	266	15	281
Guest house / B and B	14	0	14
Hotel	111	1	112
Public house	117	0	117
Restaurant / Cafe	223	0	223
Other recreation activity	29	0	29
Sporting activity/fitness	95	0	95
Social gathering	284	5	289
Religious/Other ceremony	139	5	144
Extended family	823	131	954
Community outbreak	527	3	530
Personal grooming service	48	0	48
Transport	66	1	67
Retail outlet	388	0	388
Private house	6,789	5,426	12,215

Outbreak location	Closed	Open	Total
Other	42	1	43
Unknown	5	0	5
Not Specified	4	0	4
Total	18,171	5,889	24,060

Appendix 2

Technical Notes

1. Data are based on statutory notifications and were extracted from the National Computerised Infectious Disease Reporting (CIDR) system. Data are provisional and subject to ongoing review, validation and update. As a result, figures in this report may differ from previously published figures.
2. For surveillance purposes, the following COVID-19 outbreak definition is used for notifying **Confirmed**³ COVID-19 outbreaks/clusters:
 - There is a cluster/outbreak, with two or more cases of laboratory confirmed COVID-19 infection regardless of symptom status. This includes cases with symptoms and cases who are asymptomatic.OR
 - There is a cluster/outbreak, with two or more cases of illness with symptoms consistent with COVID-19 infection (as per the COVID-19 case definition), and at least one person is a confirmed case of COVID-19.
3. This report includes confirmed and suspected COVID-19 outbreaks.
4. An “Open” or “Closed” outbreak is defined as an outbreak where the outbreak status is “Open” or “Closed” on CIDR. In order to declare an outbreak “Closed” the outbreak location should not have experienced any new cases of infection which meet the case definition for a period of 28 days (two incubation periods).
5. Outbreak type (family/general) indicates whether an outbreak is confined to a family (family outbreak) or affects members of more than one household (general outbreak).
6. The “range in number of cases” presented in Tables 3 to 8 is based on laboratory confirmed cases linked to an outbreak in CIDR. The priority is to notify outbreaks to CIDR in a timely fashion and, while every effort is made to link cases to outbreaks as quickly as possible, there can sometimes be a delay in linking cases to the outbreak. Ranges in number of cases that include “0” include outbreaks that currently have no linked cases. Data in CIDR are continuously reviewed and updated and this includes the identification and linking of outbreak-associated cases.

³ From September 21st 2020, suspected COVID outbreaks should be reported with the disease category ‘Acute Respiratory Infection (ARI)’. If one or more cases linked to the outbreak are subsequently confirmed as COVID-19, the ARI outbreak should be reclassified to being a COVID-19 outbreak. Outbreaks of suspected COVID-19 which were notified before September 21st 2020, and met the previous COVID-19 outbreak definition should remain as COVID-19 outbreaks on CIDR. The COVID-19 case definition is detailed on the [HPSC website](#)