

Epidemiology of COVID-19 Outbreaks/Clusters in Ireland - Weekly Report. Week 17, 2022

Weekly COVID-19 Outbreak Report for week ending 30/04/2022

Prepared by HPSC on 03/05/2022

Please note: Data are provisional

This report includes data extracted from the Computerised Infectious Disease Reporting (CIDR) on 03/05/2022 up to midnight 30/04/2022.

Reference dates:

Waves	Dates
Wave 1 (Week 10 – 31 2020)	01/03/2020 – 01/08/2020
Wave 2 (Week 32 – 47 2020)	02/08/2020 – 21/11/2020
Wave 3 (Week 48 2020 – Week 25 2021)	22/11/2020 – 26/06/2021
Wave 4 (Week 26 – 50 2021)	27/06/2021 – 18/12/2021
Wave 5 (Week 51 2021 onwards)	19/12/2021 onwards

The HPSC Epidemiology of COVID-19 Data Hub provides data on non-private household outbreaks. The [Data Hub](#) is updated Monday to Friday.

Regional Departments of Public Health are currently prioritising the investigation and reporting of outbreaks in settings that benefit most from public health and clinical intervention. These settings include acute hospitals, nursing homes, community hospital/long-stay units, residential institutions, other healthcare settings, vulnerable populations, special educational needs schools/classes and childcare facilities. For this reason, outbreaks in other settings may be underestimated. This report focuses on these key settings/groups.

In addition, due to the surge in case numbers in recent months, the processing time of case notifications on CIDR has increased. Outbreak cases may not yet be processed and linked to their outbreak on CIDR. Due to these delays, an interim measure has been applied whereby the higher number between aggregate and outbreak linked confirmed case numbers is used in outbreak settings (report pages 9-19).

Due to the cyber-attack on the HSE IT systems on 14/05/2021, CIDR was unavailable for the reporting of COVID-19 outbreaks from 14/05/2021 to the 28/06/2021. As a result, there has been a delay in reporting for many outbreaks on CIDR. To account for this, outbreak week for all outbreaks created between May 14th and October 9th 2021 is based on the following algorithm: earliest of 1. outbreak recognition date; 2. first reported date; 3. outbreak created date.



Outbreak week is based on outbreak created date for all outbreaks created on or before May 13th 2021, and on or after October 10th 2021.

Please note COVID-19 outbreaks and cases are continuously validated/updated on CIDR.

The COVID-19 outbreak definition is available in [Appendix 2](#) of this report and on the [HPSC website](#).

Sincere thanks are extended to all those who are participating in the collection of data and reporting of data used in these reports. This includes the HSE COVID-19 Contact Management Programme (CMP), staff in ICU units, notifying clinicians, laboratory staff, public health doctors, nurses, surveillance scientists, microbiologists and administrative staff.

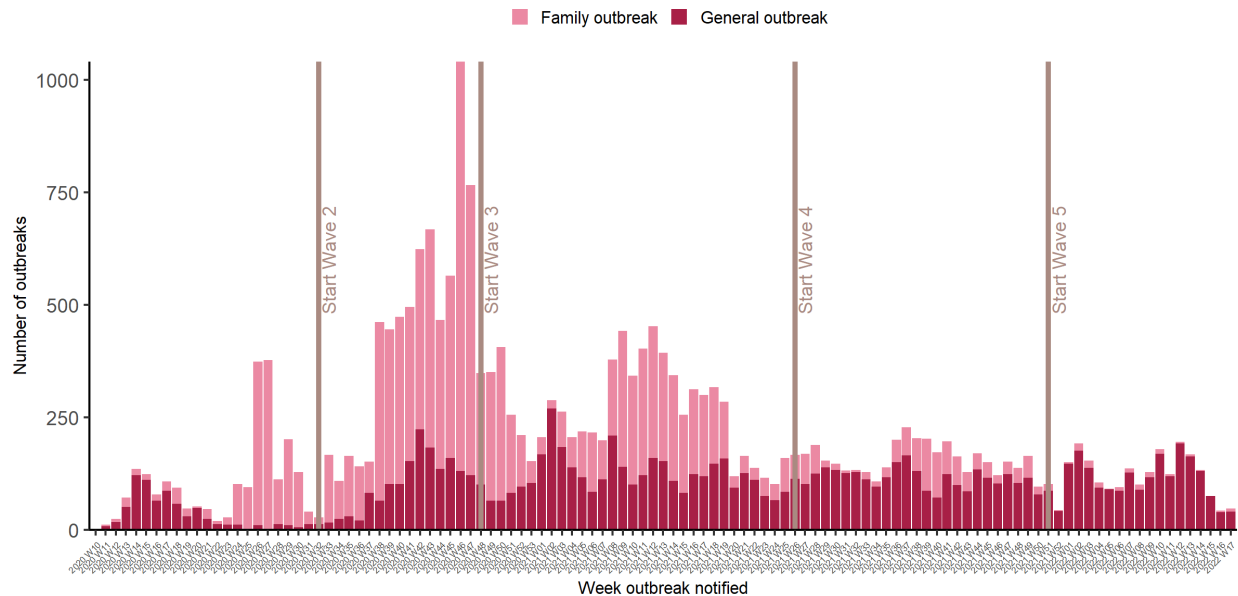


Figure 1: Epi-curve of COVID-19 outbreaks in all settings notified in Ireland by week of notification and outbreak type (see technical note 5, [Appendix 2](#)) to end Week 17 2022, N=23,577. *Data source: CIDR.*

Vertical lines indicate the timeline of epidemic waves of COVID-19 infection in Ireland. Second wave of infection commenced in Week 32 2020 (week beginning 02/08/2020); the third wave commenced in Week 48 2020 (week beginning 22/11/2020); the fourth wave commenced Week 51 2021 (week beginning 27/06/2021); the fifth wave commenced Week 51 2021 (week beginning 19/12/2021)).

Key points

23,577 COVID-19 outbreaks have been reported in Ireland since Week 10, 2020 (Figure 1, Appendix 1).

Summary Wave 5 (Week 51 2021 to Week 17 2022)

2,260 COVID-19 outbreaks have been reported from Week 51 2021 onwards and key outbreak locations are as follows:

- 337 (14.9%) were reported in hospitals
- 649 (28.7%) were reported in nursing homes
- 86 (3.8%) were reported in community hospital/long-stay units
- 714 (31.6%) were reported in residential institutions
- 157 (6.9%) were reported in 'other' healthcare services
- 113 (5.0%) were reported in schools
- 13 (0.6%) were reported in childcare facilities
- 191 (8.5%) were reported in a range of other settings

1,620 outbreaks have been closed and **640** are open (See Appendix 1, Table A for breakdown of outbreaks by location and outbreak status. Note that it is common practice not to close private house outbreaks on CIDR due to the large volume of outbreaks in this category).

Summary Week 17 2022

In **Week 17 2022**, there were **47** COVID-19 outbreaks notified.

The overall number of outbreaks notified in Week 17 2022 increased by 5 compared to Week 16 2022. There were:

- 7 outbreaks associated with acute hospitals notified
- 13 outbreaks associated with nursing homes notified
- 4 associated with community hospital/long-stay units notified
- 13 outbreaks associated with residential institutions notified
- 2 outbreaks associated with other healthcare services notified
- 8 outbreaks associated with a range of other settings notified; extended family (n=1), other (n=1), workplace (n=1) and private house (n=5). Five of these were late notifications from February, March and April 2022.

COVID-19 Outbreaks/Clusters in Residential Facilities and Hospital settings in Ireland

A summary of COVID-19 outbreaks linked to nursing homes, acute hospitals, community hospital/long-stay units, and other residential institutions is shown in Figure 2 and in the subsequent “Focus” sections, Tables 3-5 and Figures 3-5.

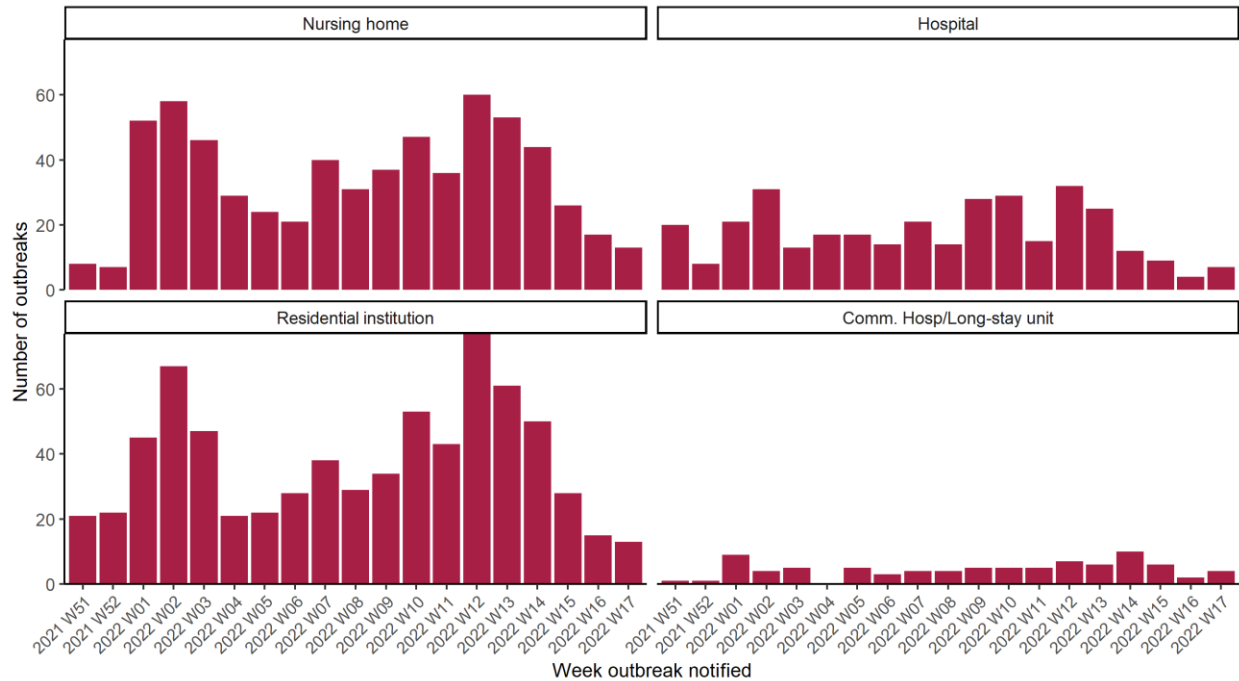


Figure 2: Epi-curve of COVID-19 outbreaks in: Acute Hospitals, Nursing Homes, Community Hospitals/Long-stay units and Residential institutions notified in Ireland by week of notification, Wave 5. *Data source: CIDR*

Table 1: Number of COVID-19 outbreaks notified in Ireland by outbreak location and by week of notification Wave 5, and difference in number of outbreaks notified in Week 17 2022 compared to the previous week, N=2,260. *Data source: CIDR*

Outbreak location	Total Week 51 2021 - Week 9 2022	2022 W10	2022 W11	2022 W12	2022 W13	2022 W14	2022 W15	2022 W16	2022 W17	Difference in number of outbreaks notified since last week	Total wave 5: Week 51 2021 - Week 17 2022
Residential institution	374	53	43	77	61	50	28	15	13	-2	714
Hospital	204	29	15	32	25	12	9	4	7	3	337
Other healthcare service	78	16	15	14	15	11	5	1	2	1	157
Nursing home	353	47	36	60	53	44	26	17	13	-4	649
Comm. Hosp/Long-stay unit	41	5	5	7	6	10	6	2	4	2	86
Other school type	17	0	1	0	0	0	0	0	0	0	18
Special education	69	15	5	0	3	3	0	0	0	0	95
Total School*	86	15	6	0	3	3	0	0	0	0	113
Childcare facility	11	1	0	0	0	0	1	0	0	0	13
Other location	150	13	4	5	5	3	0	3	8	5	191
Total	1,297	179	124	195	168	133	75	42	47	5	2,260

*These outbreaks are associated with school children +/- school staff. Transmission of COVID-19 within the school has not necessarily been established in these outbreaks. Please note not all school outbreaks require public health prioritisation and therefore may not be reported to CIDR.

Table 2A: Number of COVID-19 outbreaks by outbreak location and HSE-Area notified in Ireland, Wave 5. N=2,260. *Data source: CIDR*

Outbreak location	HSE E	HSE M	HSE MW	HSE NE	HSE NW	HSE SE	HSE S	HSE W	Total
Nursing home	214	44	64	59	30	71	79	88	649
Residential institution	210	39	81	115	67	89	76	37	714
Hospital	157	5	24	42	36	12	21	40	337
Other healthcare service	14	3	28	24	5	18	42	23	157
Comm. Hosp/Long-stay unit	7	0	12	1	18	13	27	8	86
Other school type	12	0	1	2	1	0	2	0	18
Special education	20	3	21	8	7	7	25	4	95
Total School*	32	3	22	10	8	7	27	4	113
Childcare facility	1	1	1	1	3	1	3	2	13
Other location	10	1	22	29	7	2	37	83	191
Total	645	96	254	281	174	213	312	285	2,260

Table 2B: Number of COVID-19 outbreaks by outbreak location and HSE-Area notified in Ireland during Week 17 2022, N=47. *Data source: CIDR*

Outbreak location	HSE E	HSE M	HSE MW	HSE NE	HSE NW	HSE SE	HSE S	HSE W	Total
Hospital	4	0	0	0	0	0	0	3	7
Nursing home	2	0	2	1	1	3	1	3	13
Comm. Hosp/Long-stay unit	0	0	2	0	0	1	1	0	4
Residential institution	1	0	2	3	1	3	2	1	13
Other healthcare service	1	0	1	0	0	0	0	0	2
Other school type	0	0	0	0	0	0	0	0	0
Special education	0	0	0	0	0	0	0	0	0
Total School	0	0	0	0	0	0	0	0	0
Childcare facility	0	0	0	0	0	0	0	0	0
Other location	1	0	5**	0	0	0	1	1	8
Total	9	0	12	4	2	7	5	8	47



*These outbreaks are associated with school children +/- school staff. Transmission of COVID-19 within the school has not necessarily been established in these outbreaks. Please note not all school outbreaks require public health prioritisation and therefore may not be reported to CIDR. **These were late notifications from February, March and April 2022.

Focus on COVID-19 Outbreaks in Nursing Homes and Community Hospitals

Table 3: Number of COVID-19 outbreaks and laboratory confirmed cases[§] in nursing homes and community hospital/long-stay units in Ireland, Wave 5. *Data source: CIDR*

Outbreak location	Total number of outbreaks week 17	Range in number of confirmed cases# week 17	Total number of outbreaks since start wave 5	Total number of open outbreaks	Range in number of confirmed cases# in open outbreaks
Nursing home	13	0 - 16	649	204	0 - 82
Comm. Hosp/Long-stay unit	4	<5	86	35	0 - 28
Total	17	0 - 16	735	239	0 - 82

[§]Due to delays in linkage of outbreak cases as a result of the recent surge, an interim measure has been applied whereby the higher number between aggregate and outbreak linked confirmed case numbers is used. [#]n/a is used where there were no outbreaks in a category or where there are no confirmed cases currently linked to any outbreak in that category (see technical note 6, [Appendix 2](#)).

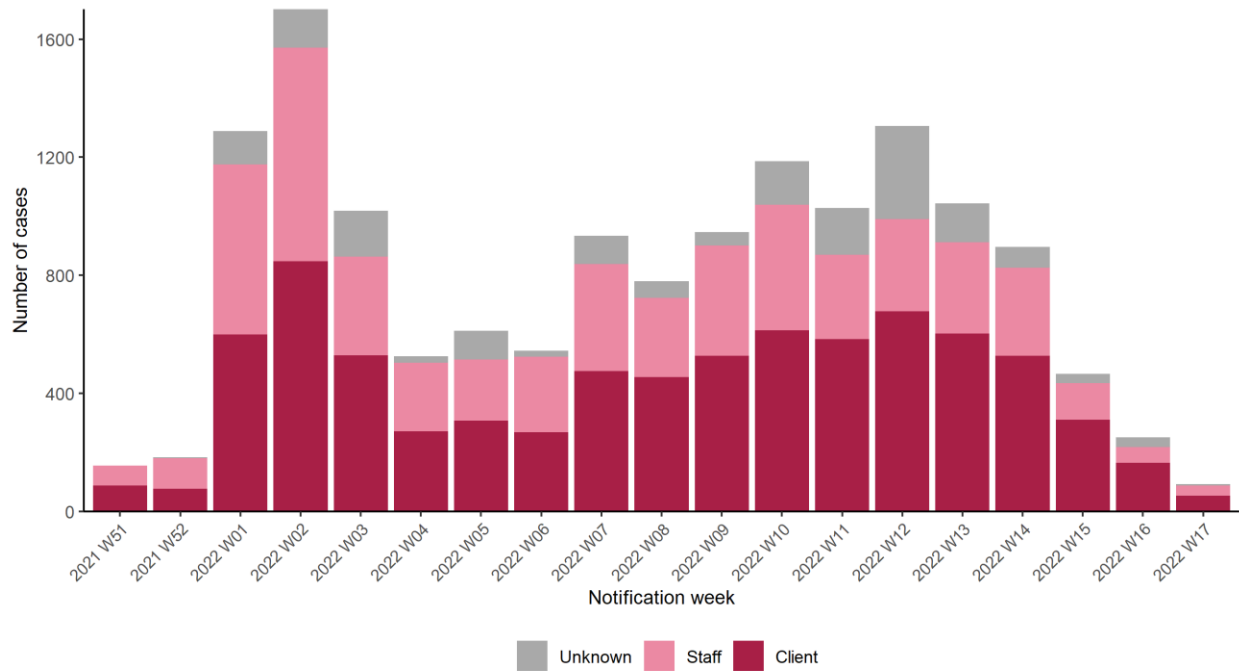


Figure 3: Epi-curve of confirmed COVID-19 cases linked to outbreaks in nursing homes and community hospital/long-stay units by staff/client status and date of notification, Wave 5. *Data source: CIDR*

Focus on COVID-19 Outbreaks in Acute Hospitals

Table 4: Number of COVID-19 outbreaks and laboratory confirmed cases[§] in acute hospital settings in Ireland, Wave 5. *Data source: CIDR*

Outbreak location	Total number of outbreaks week 17	Range in number of confirmed cases# week 17	Total number of outbreaks since start wave 5	Total number of open outbreaks	Range in number of confirmed cases# in open outbreaks
Hospital	7	2 - 9	337	74	2 - 61

[§]Due to delays in linkage of outbreak cases as a result of the recent surge, an interim measure has been applied whereby the higher number between aggregate and outbreak linked confirmed case numbers is used. [#]n/a is used where there were no outbreaks in a category or where there are no confirmed cases currently linked to any outbreak in that category (see technical note 6, [Appendix 2](#)).

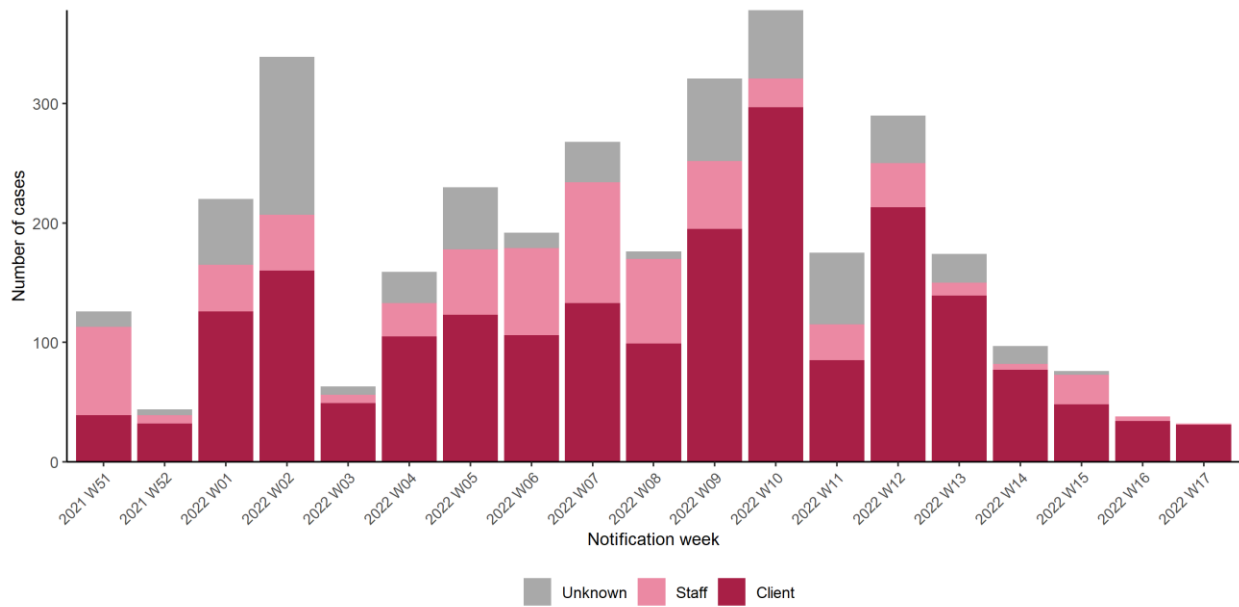


Figure 4: Epi-curve of confirmed COVID-19 cases linked to outbreaks in hospitals by staff/client status and date of notification, Wave 5. *Data source: CIDR*

Focus on COVID-19 Outbreaks in Residential Institutions (please see footnote¹)

Table 5: Number of COVID-19 outbreaks and laboratory confirmed cases[§] in residential institutions in Ireland, Wave 5. *Data source: CIDR*

Type of residential facility	Total number of outbreaks week 17	Range in number of confirmed cases# week 17	Total number of outbreaks since start wave 5	Total number of open outbreaks	Range in number of confirmed cases# in open outbreaks
Centre for disabilities	8	0 - 5	456	124	0 - 21
Mental health facility	2	5 - 8	76	35	0 - 43
Children's / TUSLA residential centre	1	<5	42	10	1 - 5
Other	1	<5	30	9	0 - 9
Centre for older people	0	0	22	8	2 - 25
Not specified	0	0	4	3	3 - 18
Women/ children's refuge	0	0	6	0	0
Total	12	0 - 8	636	189	0 - 43

[§]Due to delays in linkage of outbreak cases as a result of the recent surge, an interim measure has been applied whereby the higher number between aggregate and outbreak linked confirmed case numbers is used. [#]n/a is used where there were no outbreaks in a category or where there are no confirmed cases currently linked to any outbreak in that category (see technical note 6, [Appendix 2](#)).

¹ This section focuses on the following residential settings: Centres for disabilities, Centres for older people, Children's/TUSLA residential centres and mental health facilities. Homeless services, addiction services, direct provision centres and prisons are reported in the Focus on Vulnerable Populations section.

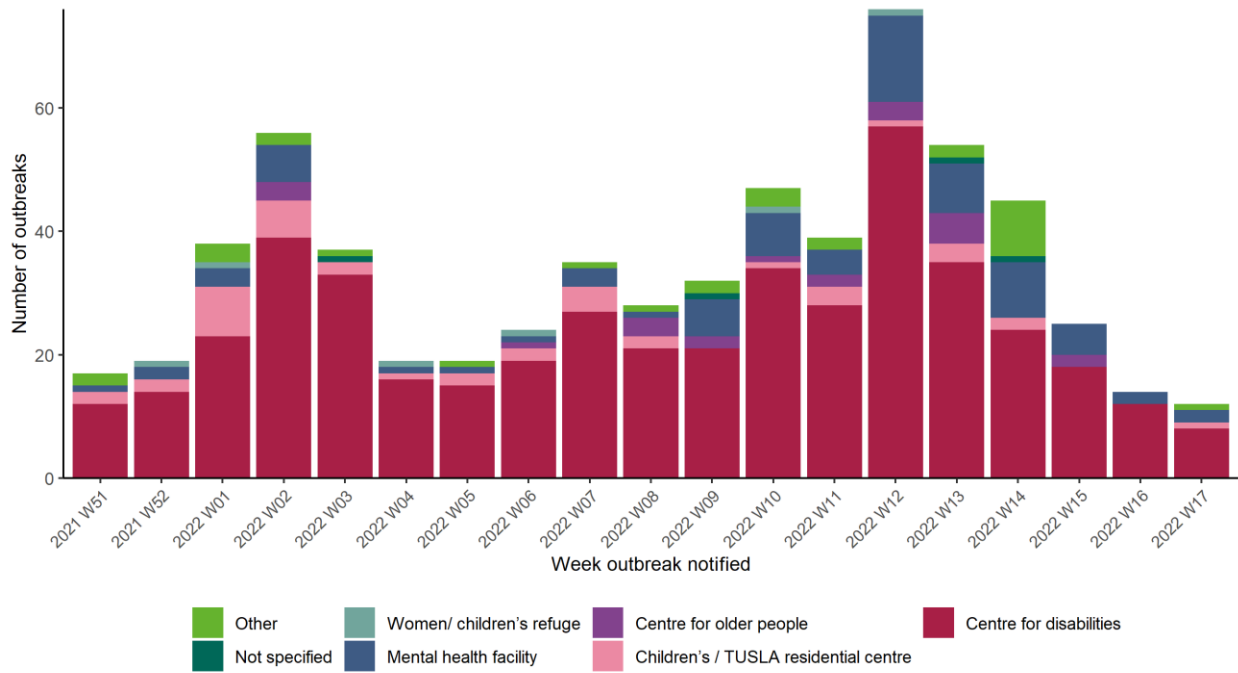


Figure 5: Number of COVID-19 outbreaks in residential institutions by type of residential institution in Ireland, Wave 5. *Data source: CIDR*

Focus on COVID-19 Outbreaks associated with Other Healthcare Settings

Table 6: Number of COVID-19 outbreaks and laboratory confirmed cases[§] associated with other healthcare settings in Ireland, Wave 5. *Data source: CIDR*

Outbreak location	Total number of outbreaks week 17	Range in number of confirmed cases# week 17	Total number of outbreaks since start wave 5	Total number of open outbreaks	Range in number of confirmed cases# in open outbreaks
People with disabilities	1	5	92	32	0 - 14
Clients of home care services	0	0	28	4	<5
Not specified/Other	1	<5	24	7	1 - 8
Clients of mental health facilities	0	0	13	6	0 - 13
Total	2	≤ 5	157	49	0 - 14

[§]Due to delays in linkage of outbreak cases as a result of the recent surge, an interim measure has been applied whereby the higher number between aggregate and outbreak linked confirmed case numbers is used. #n/a is used where there were no outbreaks in a category or where there are no confirmed cases currently linked to any outbreak in that category (see technical note 6, [Appendix 2](#)).

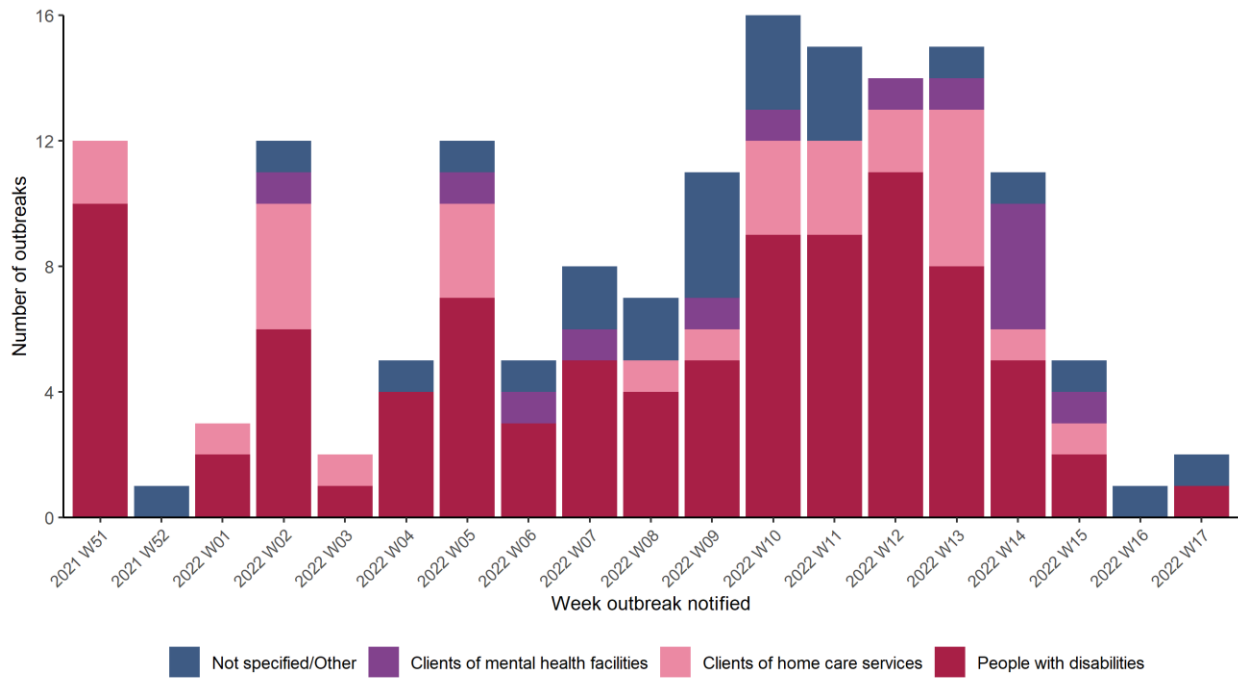


Figure 6: Number of COVID-19 outbreaks in 'Other healthcare' settings by type of setting in Ireland, Wave 5. *Data source: CIDR*

Focus on COVID-19 Outbreaks associated Other Vulnerable Populations

Table 7: Number of COVID-19 outbreaks and laboratory confirmed cases in settings involving vulnerable populations, including the Irish Traveller community, Roma community, direct provision centres, facilities for the homeless/those with addiction issues and prisons in Ireland, Wave 5. *Data source: CIDR*

Vulnerable populations	Total number of outbreaks week 17	Range in number of confirmed cases# week 17	Total number of outbreaks since start wave 5	Total number of open outbreaks	Range in number of confirmed cases# in open outbreaks
Irish Travellers	2	<5	108	43	0 - 15
Homeless	1	<5	26	5	0 - 8
Asylum seekers / refugees	0	0	22	5	1 - 24
Migrants (including undocumented)	0	0	3	0	0
People with addictions	0	0	12	1	<5
Prison staff and prisoners	0	0	18	8	8 - 117
Roma community	0	0	18	1	<5
Total	3	<5	207	63	0 - 117

^sDue to delays in linkage of outbreak cases as a result of the recent surge, an interim measure has been applied whereby the higher number between aggregate and outbreak linked confirmed case numbers is used. ⁿn/a is used where there were no outbreaks in a category or where there are no confirmed cases currently linked to any outbreak in that category (see technical note 6, [Appendix 2](#)).

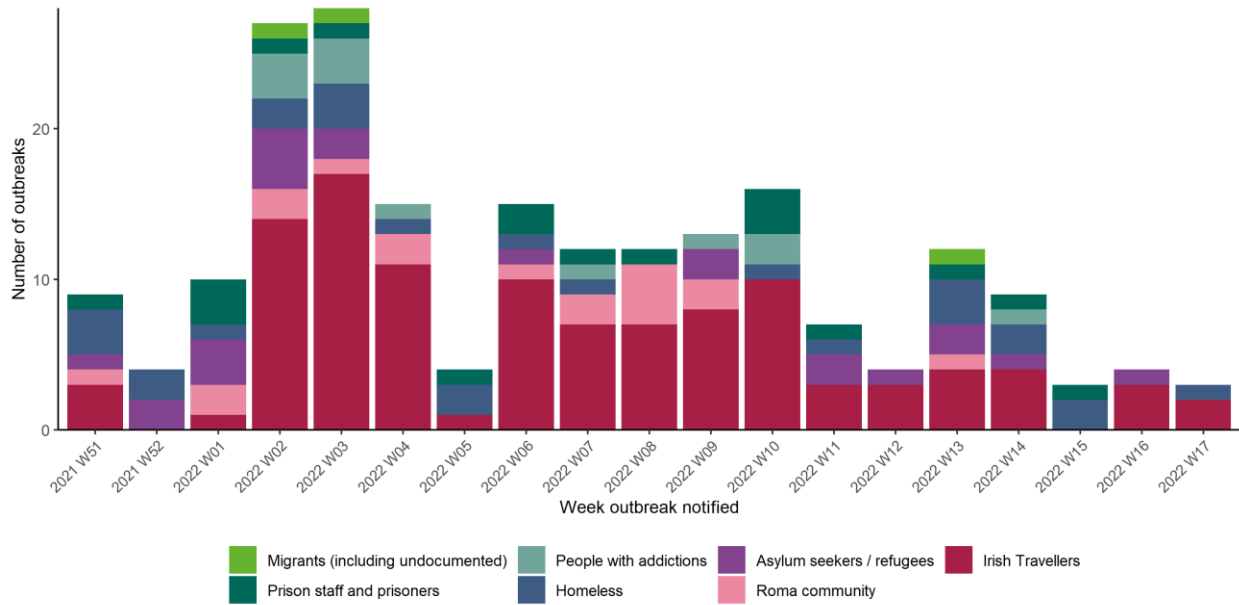


Figure 7: Number of COVID-19 outbreaks associated with other vulnerable populations in Ireland, Wave 5. *Data source: CIDR*

Focus on COVID-19 Outbreaks associated with School Children (+/- staff), and Childcare Facilities

Table 8: Number of COVID-19 outbreaks and laboratory confirmed cases[§] associated with school children (+/- staff) and childcare facilities in Ireland, Wave 5. *Data source: CIDR*

Type of educational facility	Total number of outbreaks week 17	Range in number of confirmed cases# week 17	Total number of outbreaks since start wave 5	Total number of open outbreaks	Range in number of confirmed cases# in open outbreaks
Childcare facility	0	0	13	2	0 - 8
Other school type	0	0	18	0	0
Special education	0	0	95	14	0 - 12
Total	0	n/a	126	16	0 - 12

[§]Due to delays in linkage of outbreak cases as a result of the recent surge, an interim measure has been applied whereby the higher number between aggregate and outbreak linked confirmed case numbers is used. [#]n/a is used where there were no outbreaks in a category or where there are no confirmed cases currently linked to any outbreak in that category (see technical note 6, [Appendix 2](#)).

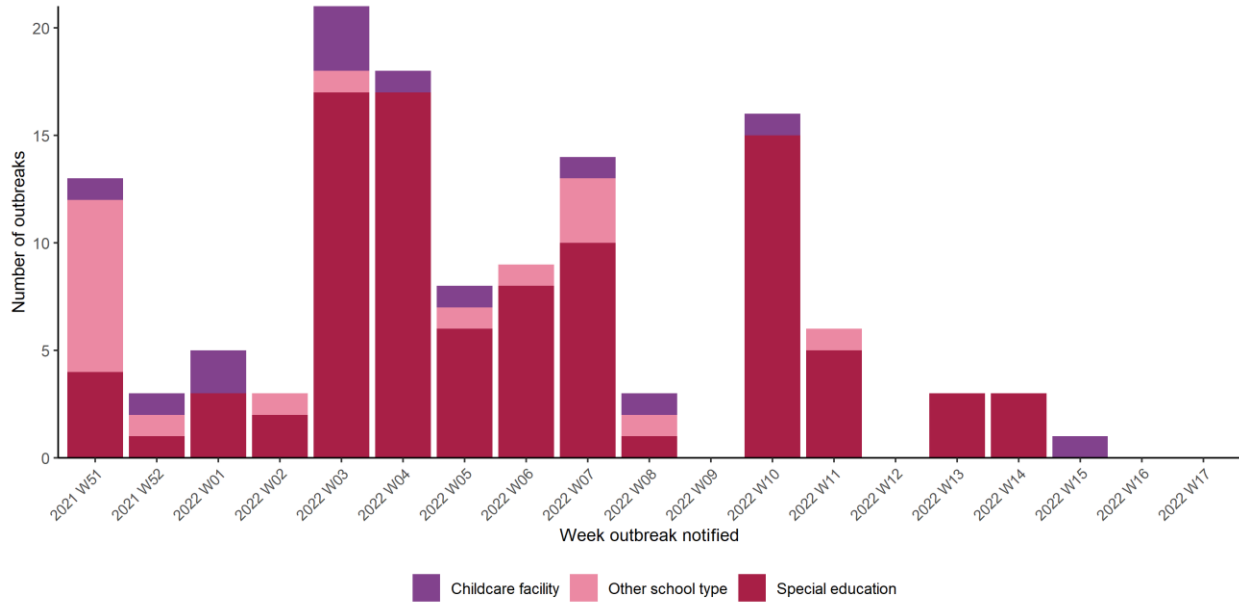


Figure 8: Number of COVID-19 outbreaks in school and childcare facility settings in Ireland, Wave 5. Data source: CIDR

Appendices

Appendix 1

Table A: Number of COVID-19 outbreaks notified in Ireland by outbreak location and closure status from Week 10 20200 to Week 17, 2022, N=23,577. *Data source: CIDR*

Outbreak location	Closed	Open	Total
Comm. Hosp/Long-stay unit	152	35	187
Hospital	878	75	953
Nursing home	1,193	205	1,398
Other healthcare service	434	50	484
Residential institution	1,436	210	1,646
Childcare facility	640	12	652
School	1,373	17	1,390
University/College	65	3	68
Workplace	1,267	0	1,267
Travel related	259	16	275
Guest house / B and B	14	0	14
Hotel	111	0	111
Public house	117	0	117
Restaurant / Cafe	223	0	223
Other recreation activity	29	0	29
Sporting activity/fitness	95	0	95
Social gathering	282	5	287
Religious/Other ceremony	133	9	142
Extended family	770	179	949
Community outbreak	527	4	531
Personal grooming service	48	0	48
Transport	65	2	67
Retail outlet	390	0	390
Private house	6,573	5,628	12,201

Outbreak location	Closed	Open	Total
Other	42	2	44
Unknown	5	0	5
Not Specified	4	0	4
Total	17,125	6,452	23,577

Appendix 2

Technical Notes

1. Data are based on statutory notifications and were extracted from the National Computerised Infectious Disease Reporting (CIDR) system. Data are provisional and subject to ongoing review, validation and update. As a result, figures in this report may differ from previously published figures.
2. For surveillance purposes, the following COVID-19 outbreak definition is used for notifying **Confirmed**² COVID-19 outbreaks/clusters:
 - There is a cluster/outbreak, with two or more cases of laboratory confirmed COVID-19 infection regardless of symptom status. This includes cases with symptoms and cases who are asymptomatic.OR
 - There is a cluster/outbreak, with two or more cases of illness with symptoms consistent with COVID-19 infection (as per the COVID-19 case definition), and at least one person is a confirmed case of COVID-19.
3. This report includes confirmed and suspected COVID-19 outbreaks.
4. An “Open” or “Closed” outbreak is defined as an outbreak where the outbreak status is “Open” or “Closed” on CIDR. In order to declare an outbreak “Closed” the outbreak location should not have experienced any new cases of infection which meet the case definition for a period of 28 days (two incubation periods).
5. Outbreak type (family/general) indicates whether an outbreak is confined to a family (family outbreak) or affects members of more than one household (general outbreak).
6. The “range in number of cases” presented in Tables 3 to 8 is based on laboratory confirmed cases linked to an outbreak in CIDR. The priority is to notify outbreaks to CIDR in a timely fashion and, while every effort is made to link cases to outbreaks as quickly as possible, there can sometimes be a delay in linking cases to the outbreak. Ranges in number of cases that include “0” include outbreaks that currently have no linked cases. Data in CIDR are continuously reviewed and updated and this includes the identification and linking of outbreak-associated cases.

² From September 21st 2020, suspected COVID outbreaks should be reported with the disease category ‘Acute Respiratory Infection (ARI)’. If one or more cases linked to the outbreak are subsequently confirmed as COVID-19, the ARI outbreak should be reclassified to being a COVID-19 outbreak. Outbreaks of suspected COVID-19 which were notified before September 21st 2020, and met the previous COVID-19 outbreak definition should remain as COVID-19 outbreaks on CIDR. The COVID-19 case definition is detailed on the [HPSC website](#)