

# Epidemiology of COVID-19 Outbreaks/Clusters in Ireland

## Weekly Report

Prepared by HPSC on 22<sup>nd</sup> March 2022

**Week 11 2022 (week ending 19<sup>th</sup> March 2022)**

### Note: Data are provisional

This report includes data extracted from CIDR on 22<sup>nd</sup> March 2022 at 8:30am and includes COVID-19 outbreaks notified on CIDR up to midnight 19/03/2022.

<b>Total number of COVID-19 outbreaks notified since Week 10 2020:</b>	<b>22,932</b>
<b>Number of COVID-19 outbreaks notified from Week 26 2021:</b>	<b>5,560</b>
<b>Number of COVID-19 outbreaks notified since Week 26 2021 OPEN:</b>	<b>1,473</b>
<b>Number of COVID-19 outbreaks notified since Week 26 2021 CLOSED:</b>	<b>4,087</b>
<b>Number of COVID-19 outbreaks notified in Week 11 2022:</b>	<b>125</b>

<b>Waves (weeks)</b>	<b>Dates</b>
Wave 1 (Week 10 – 31 2020)	01/03/2020 – 01/08/2020
Wave 2 (Week 32 – 47 2020)	02/08/2020 – 21/11/2020
Wave 3 (Week 48 2020 – Week 25 2021)	22/11/2020 – 26/06/2021
Wave 4 (Week 26 – 50 2021)	27/06/2021 – 18/12/2021
Wave 5 (Week 51 2021 onwards)	19/12/2021 onwards

*Regional Departments of Public Health are currently prioritising the investigation and reporting of outbreaks in settings that benefit most from public health and clinical intervention. These settings include acute hospitals, nursing homes, community hospital/long-stay units, residential institutions, other healthcare settings, vulnerable populations, special educational needs schools/classes and childcare facilities. For this reason, outbreaks in other settings may be underestimated. This report focuses on these key settings/groups.*

*In addition, due to the surge in case numbers in recent months, the processing time of case notifications on CIDR has increased. Outbreak cases may not yet be processed and linked to their outbreak on CIDR. Due to these delays, an interim measure has been applied whereby the higher number between aggregate and outbreak linked confirmed case numbers is used in outbreak settings (report pages 8-18).*

*Due to the cyber-attack on the HSE IT systems on 14/05/2021, CIDR was unavailable for the reporting of COVID-19 outbreaks from 14/05/2021 to the 28/06/2021. As a result, there has been a delay in reporting for many outbreaks on CIDR. To account for this, outbreak week for all outbreaks created between May 14<sup>th</sup> and*

**Note: Data are provisional**

HSE-Health Protection Surveillance Centre

*October 9<sup>th</sup> is based on the following algorithm: earliest of 1. outbreak recognition date; 2. first reported date; 3. outbreak created date. Outbreak week is based on outbreak created date for all outbreaks created on or before May 13<sup>th</sup> 2021, and on or after October 10<sup>th</sup> 2021.*

Please note COVID-19 outbreaks and cases are continuously validated/updated on Ireland's National Computerised Infectious Disease Reporting System (CIDR).

The COVID-19 outbreak definition is available in appendix 2 of this report and on the HPSC website at: <https://www.hpsc.ie/a-z/respiratory/coronavirus/novelcoronavirus/casedefinitions/covid-19outbreakcasedefinitionforireland/>

Sincere thanks are extended to all those who are participating in the collection of data and reporting of data used in these reports. This includes the HSE COVID-19 Contact Management Programme (CMP), staff in ICU units, notifying clinicians, laboratory staff, public health doctors, nurses, surveillance scientists, microbiologists and administrative staff.

**22,932 COVID-19 outbreaks have been reported in Ireland since Week 10, 2020 (Figure 1).**

### Summary (Week 26 2021 to Week 11 2022)

**5,560** COVID-19 outbreaks have been reported from Week 26 2021 onwards (week beginning 27/06/2021; fourth wave of COVID-19 infection in Ireland) and key outbreak locations are as follows:

- 442 (7.9%) were reported in hospitals
- 600 (10.8%) were reported in nursing homes
- 89 (1.6%) were reported in community hospital/long-stay units
- 784 (14.1%) were reported in residential institutions
- 240 (4.3%) were reported in 'other' healthcare services
- 605 (10.9%) were reported in schools<sup>#</sup>
- 254 (4.6%) were reported in childcare facilities
- 2,546 (45.8%) were reported in a range of other settings

4,087 outbreaks have been closed and 1,473 outbreaks are open (See Appendix 1, Table A for breakdown of outbreaks by location and outbreak status. Note that it is common practice not to close private house outbreaks on CIDR due to the large volume of outbreaks in this category).

*#In Week 44 2021, 32 outbreaks associated with schools that occurred during May and June 2021 (2020/2021 academic year) were retrospectively notified.*

### Wave 5 (Week 51 2021 – Week 11 2022)

1,611 of the 5,560 COVID-19 outbreaks reported from Week 26 2021 occurred since the beginning of wave 5 (week beginning 19/12/2021). Of these, 250 (19.2%) were reported in hospitals, 435 (33.4%) were reported in nursing homes, 52 (4%) were reported in community hospital/long-stay units and 473 (36.3%) were reported in residential institutions.

### Summary (Week 11, 2022)

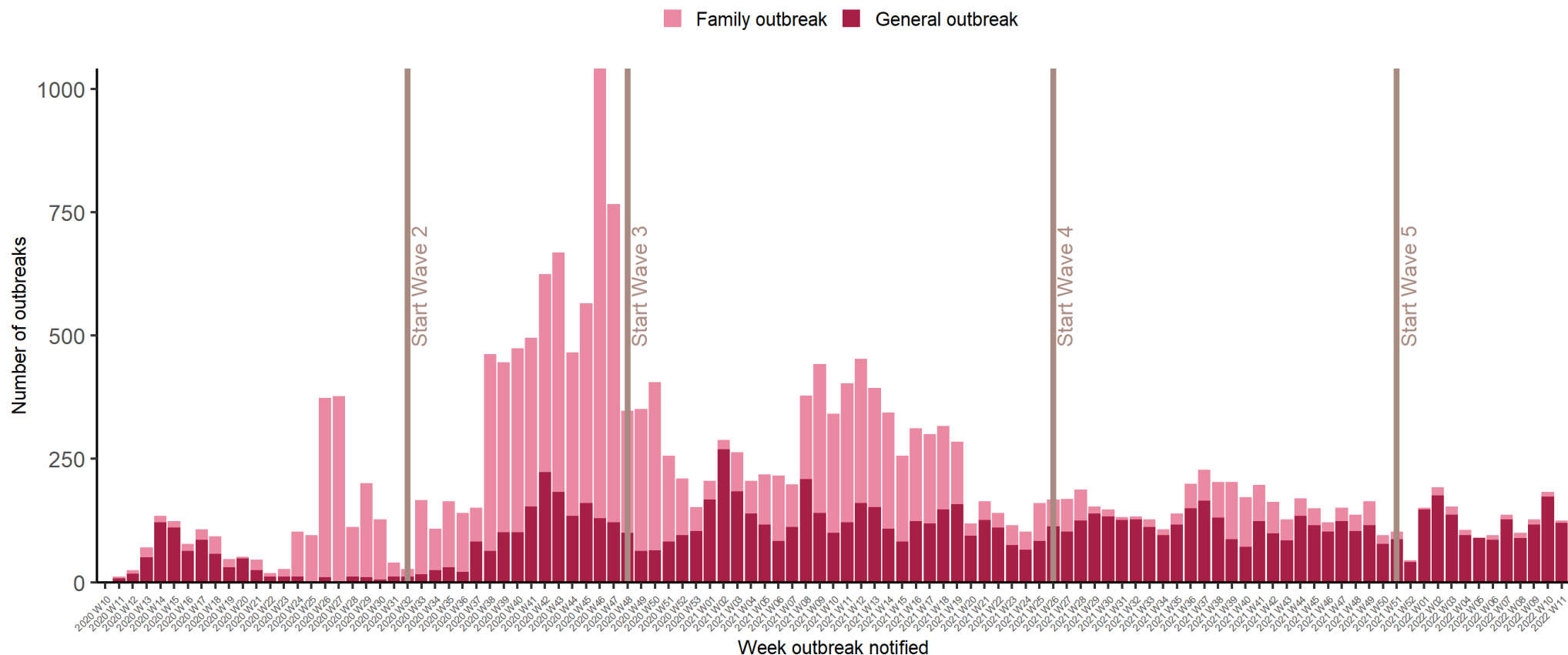
In **Week 11 2022**, there were **125** COVID-19 outbreaks notified:

- The overall number of outbreaks notified in Week 11 2022 decreased by 58\* compared to Week 10 2021
- In healthcare settings there were:
  - 16 acute hospital outbreaks notified
  - 34 nursing home outbreaks notified
  - five community hospital/long-stay unit outbreak notified
  - 44 residential institution outbreaks notified
  - 16 outbreaks associated with other healthcare services notified
- The remaining ten outbreaks were reported in a number of other settings: schools (n=6); private houses (n=2; Irish Traveller Community (n=2)); extended family (n=1; Irish Traveller Community (n=1)); restaurant/cafe (n=1)

\*reporting may have been affected by the extended bank holiday weekend

**Note: Data are provisional**

HSE-Health Protection Surveillance Centre



**Figure 1:** Epi-curve of COVID-19 outbreaks in all settings notified in Ireland by week of notification and outbreak type (see technical note 5, Appendix 2) to midnight on 19/03/2022, N=22,932. Data source: CIDR

Vertical lines indicate the timeline of epidemic waves of COVID-19 infection in Ireland. Second wave of infection commenced in Week 32 2020 (week beginning 02/08/2020); the third wave commenced in Week 48 2020 (week beginning 22/11/2020); the fourth wave commenced Week 26 2021 (week beginning 27/06/2021); the fifth wave commenced Week 51 2021 (week beginning 19/12/2021).

**Note: Data are provisional**

**Table 1:** Number of COVID-19 outbreaks notified in Ireland by outbreak location and by week of notification from 27/06/2021 to midnight on 19/03/2022, and difference in number of outbreaks notified in Week 11 2022 compared to the previous week, N=5,560. *Data source: CIDR*

Outbreak location	Week of Outbreak Notification									Difference in number of outbreaks notified since last week	Total Wave 4 and 5 (Week 26 2021 - Week 11 2022)
	Week 26 2021 to Week 3 2022	2022									
		4	5	6	7	8	9	10	11		
Hospital	285	17	17	14	22	13	28	30	16	-14	442
Nursing home	337	29	24	21	40	31	37	47	34	-13	600
Community Hospital / Long-stay unit	57	0	5	3	4	4	5	6	5	-1	89
Residential institution	513	22	20	28	38	30	34	55	44	-11	784
Other healthcare services	158	5	14	5	8	7	11	16	16	0	240
<b>School total**§</b>	<b>536</b>	<b>17</b>	<b>7</b>	<b>9</b>	<b>13</b>	<b>2</b>	<b>0</b>	<b>15</b>	<b>6</b>	<b>-9</b>	<b>605</b>
Special educational needs	109	17	6	8	10	1	0	15	5	-10	171
Other school type	427	0	1	1	3	1	0	0	1	+1	434
Childcare Facility	249	1	1	0	1	1	0	1	0	-1	254
Other locations	2460	15	3	15	11	12	13	13	4	-9	2546
<b>Total</b>	<b>4595</b>	<b>106</b>	<b>91</b>	<b>95</b>	<b>137</b>	<b>100</b>	<b>128</b>	<b>183</b>	<b>125</b>	<b>-58</b>	<b>5560</b>

\*These outbreaks are outbreaks associated with school children +/- school staff. Transmission of COVID-19 within the school has not necessarily been established in these outbreaks. #In Week 44 2021, 32 outbreaks associated with schools that occurred during May and June 2021 (2020/21 academic year) were retrospectively notified. Outbreaks in settings in grey may be underestimated due to public health focus on key settings at present. §Please note not all school outbreaks require public health prioritization and therefore may not be reported to CIDR.

**Note: Data are provisional**

**Table 2A:** Number of COVID-19 outbreaks by outbreak location and HSE-Area notified in Ireland from 27/06/2021 to midnight on 19/03/2022 N=5,560. *Data source: CIDR*

Outbreak Location	East	Midlands	MidWest	NorthEast	NorthWest	SouthEast	South	West	HPSC#	Total
Hospital	173	19	37	52	57	25	35	44	0	442
Nursing home	189	39	68	55	31	57	81	80	0	600
Community Hospital/Long-stay unit	15	2	6	2	17	15	24	8	0	89
Residential institution	244	33	105	122	66	82	86	46	0	784
Other healthcare service	28	3	55	32	14	33	40	35	0	240
<b>School total***\$</b>	<b>162</b>	<b>59</b>	<b>129</b>	<b>66</b>	<b>73</b>	<b>24</b>	<b>52</b>	<b>40</b>	<b>0</b>	<b>605</b>
Special educational needs	60	13	35	14	10	8	26	5	0	171
Other school type	102	46	94	52	63	16	26	35	0	434
Childcare facility	83	22	30	46	20	11	13	29	0	254
Other locations	342	250	360	252	654	149	309	229	1	2546
<b>Total</b>	<b>1236</b>	<b>427</b>	<b>790</b>	<b>627</b>	<b>932</b>	<b>396</b>	<b>640</b>	<b>511</b>	<b>1</b>	<b>5560</b>

**Table 2B:** Number of COVID-19 outbreaks by outbreak location and HSE-Area notified in Ireland during Week 11 2022 (week ending 19/03/2022), N=125. *Data source: CIDR*

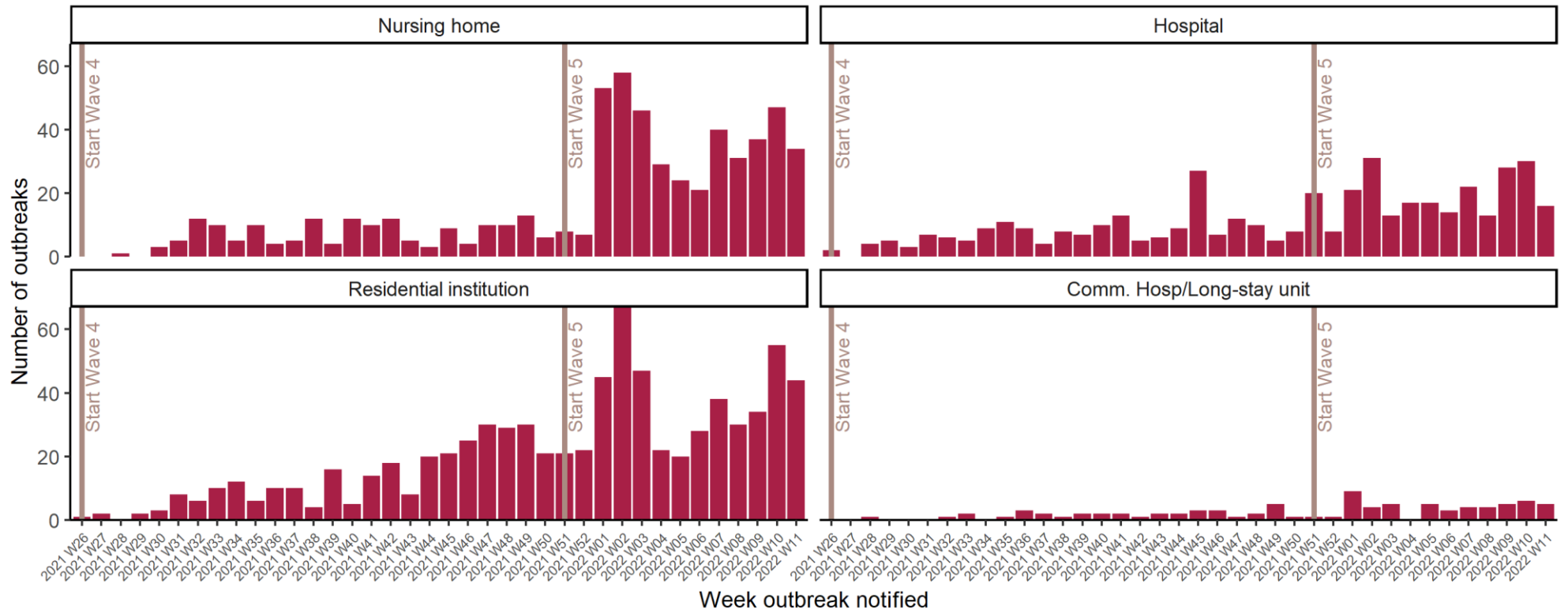
Outbreak Location	East	Midlands	MidWest	NorthEast	NorthWest	SouthEast	South	West	Total
Hospital	7	0	0	3	2	0	2	2	16
Nursing home	6	3	6	2	1	2	5	9	34
Community Hospital / Long-stay unit	0	0	0	0	2	3	0	0	5
Residential institution	11	0	4	5	13	3	5	3	44
Other healthcare service	0	0	0	2	0	6	7	1	16
<b>School total*\$</b>	<b>1</b>	<b>0</b>	<b>0</b>	<b>0</b>	<b>0</b>	<b>0</b>	<b>5</b>	<b>0</b>	<b>6</b>
Special education	0	0	0	0	0	0	5	0	5
Other school type	0	0	0	0	0	0	0	0	0
Childcare facility	0	0	0	0	0	0	0	0	0
Other locations	0	0	0	0	0	0	1	3	4
<b>Total</b>	<b>25</b>	<b>3</b>	<b>10</b>	<b>12</b>	<b>18</b>	<b>14</b>	<b>25</b>	<b>18</b>	<b>125</b>

\*These outbreaks are associated with school children +/- or school staff. Transmission of COVID-19 within the school has not necessarily been established in these outbreaks. #Outbreak involves three or more public health regions. ##In Week 44 2021, 32 outbreaks associated with schools that occurred during May and June 2021 (2020/21 academic year) were retrospectively notified. Outbreaks in settings in grey may be underestimated due to public health focus on key settings at present. \$Please note not all school outbreaks require public health prioritization and therefore may not be reported to CIDR.

**Note: Data are provisional**

### COVID-19 Outbreaks/Clusters in Residential Facilities and Hospital settings in Ireland

A summary of COVID-19 outbreaks linked to nursing homes, acute hospitals, community hospital/long-stay units, and other residential institutions is shown in Figure 2 and in the subsequent “Focus” sections, Tables 3-5 and Figures 3-5.



**Figure 2:** Epi-curve of COVID-19 outbreaks in: Acute Hospitals, Nursing Homes, Community Hospitals/Long-stay units and Residential institutions notified in Ireland by week of notification, from 27/06/2021 to midnight on 19/03/2022. *Data source: CIDR*

**Note: Data are provisional**

### Focus on COVID-19 Outbreaks in Nursing Homes and Community Hospitals

There have been **1,337** COVID-19 outbreaks in nursing homes and community hospital/long stay units, with **28,054** laboratory confirmed COVID-19 cases<sup>§</sup>, notified in Ireland since 01/03/2020.

From 27/06/2021 to 19/03/2022, **689** outbreaks in nursing homes or community hospital/long-stay units have been notified and **339** of these outbreaks remain open (Table 3).

**There were 34 new COVID-19 outbreaks reported in nursing homes and five reported in community hospitals during Week 11 2022.**

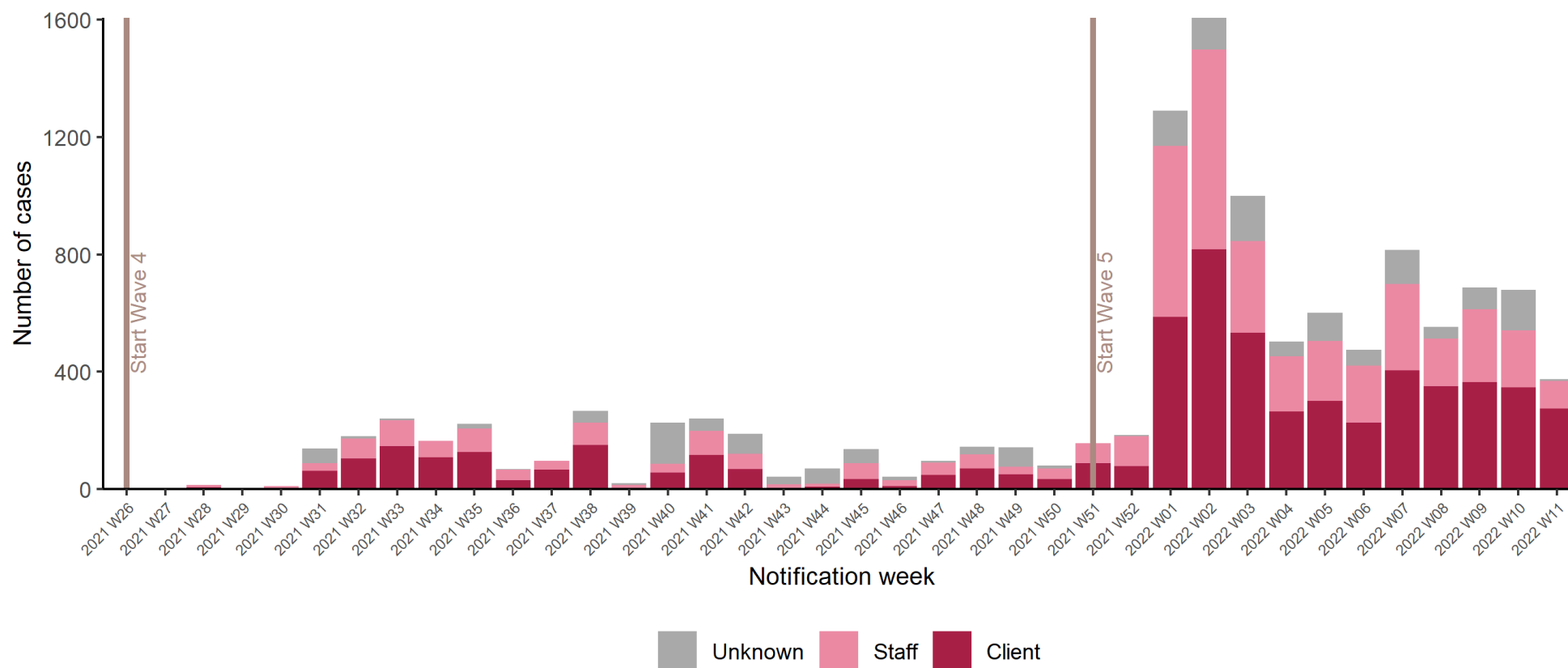
**Table 3:** Number of COVID-19 outbreaks and laboratory confirmed cases<sup>§</sup> in nursing homes and community hospital/long-stay units in Ireland, from 27/06/2021 to midnight on 19/03/2022. *Data source: CIDR*

Outbreak location	Number of outbreaks notified				
	Week 11	Week 11 outbreaks: Range in no. of cases <sup>#</sup>	Week 26 2021 – Week 11 2022	Number open	Open outbreaks: Range in no. of cases <sup>#</sup>
Nursing home	34	0-30	600	303	0-129
Community Hospital/Long-stay unit	5	2-7	89	36	0-65
<b>Total</b>	<b>39</b>	<b>0-30</b>	<b>689</b>	<b>339</b>	<b>0-129</b>

<sup>#</sup>n/a is used where there were no outbreaks in a category or where there are no confirmed cases currently linked to any outbreak in that category (see technical note 6, Appendix 2). <sup>§</sup>Due to delays in linkage of outbreak cases as a result of the surge, an interim measure has been applied whereby the higher number between aggregate and outbreak linked confirmed case numbers is used.

**Note: Data are provisional**





**Figure 3:** Epi-curve of confirmed COVID-19 cases linked to outbreaks in nursing homes and community hospital/long-stay units by staff/client status and date of notification from 27/06/2021 to midnight on 19/03/2022. *Data source: CIDR*

**Note: Data are provisional**

### Focus on COVID-19 Outbreaks in Acute Hospitals

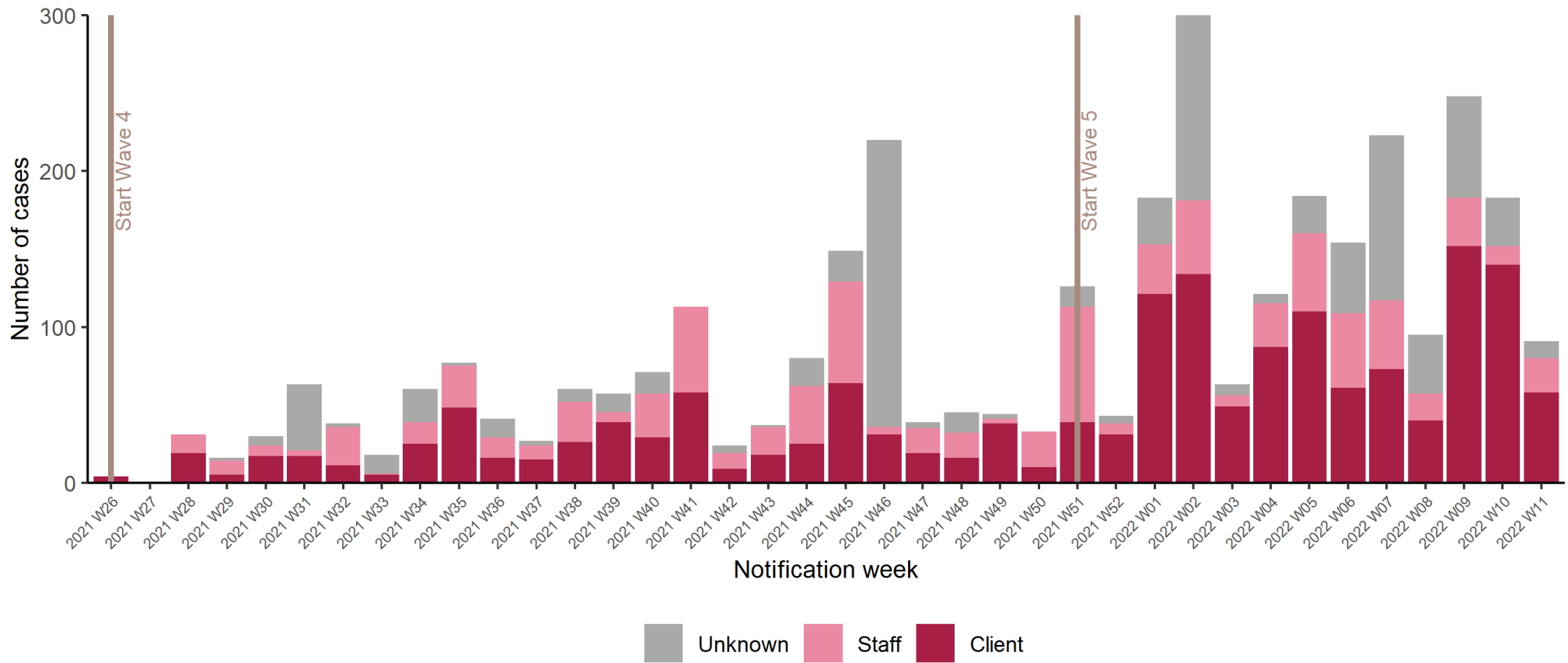
There were **866** COVID-19 outbreaks in acute hospitals, with **9,869** laboratory confirmed COVID-19 cases<sup>§</sup>, notified in Ireland since 01/03/2020. From 27/06/2021 to 19/03/2022, **442** outbreaks in acute hospitals have been notified and **156** of these outbreaks remain open (Table 4).

**There were 16 new COVID-19 outbreaks reported in acute hospitals during Week 11 2022.**

**Table 4:** Number of COVID-19 outbreaks and laboratory confirmed cases<sup>§</sup> in acute hospital settings in Ireland, from 27/06/2021 to midnight on 19/03/2022. *Data source: CIDR*

Outbreak location: Acute Hospitals	Number of outbreaks notified				
	Week 11	Week 11 outbreaks: Range in no. of cases	Week 26 2021 – Week 11 2022	Number open	Open outbreaks: Range in no. of cases
	16	2-25	442	156	0-94

<sup>§</sup>Due to delays in linkage of outbreak cases as a result of the surge, an interim measure has been applied whereby the higher number between aggregate and outbreak linked confirmed case numbers is used.



**Figure 4:** Epi-curve of confirmed COVID-19 cases linked to outbreaks in hospitals by staff/client status and date of notification from 27/06/2021 to midnight on 19/03/2022. *Data source: CIDR*

**Note: Data are provisional**

### Focus on COVID-19 Outbreaks in Residential Institutions (please see footnote<sup>1</sup>)

There were **1,114** COVID-19 outbreaks in residential institutions, with **6,659** laboratory confirmed COVID-19 cases<sup>§</sup>, notified in Ireland since 01/03/2020. From 27/06/2021 to 19/03/2022, **671** outbreaks in residential institutions have been notified and **256** of these outbreaks remain open.

**There were 40 new COVID-19 outbreaks reported in residential institutions in Week 11 2022: 27 in centres for disabilities; four in centres for older people; three in children’s / TUSLA residential centres; three in mental health facilities and; three in other/non-specified locations.**

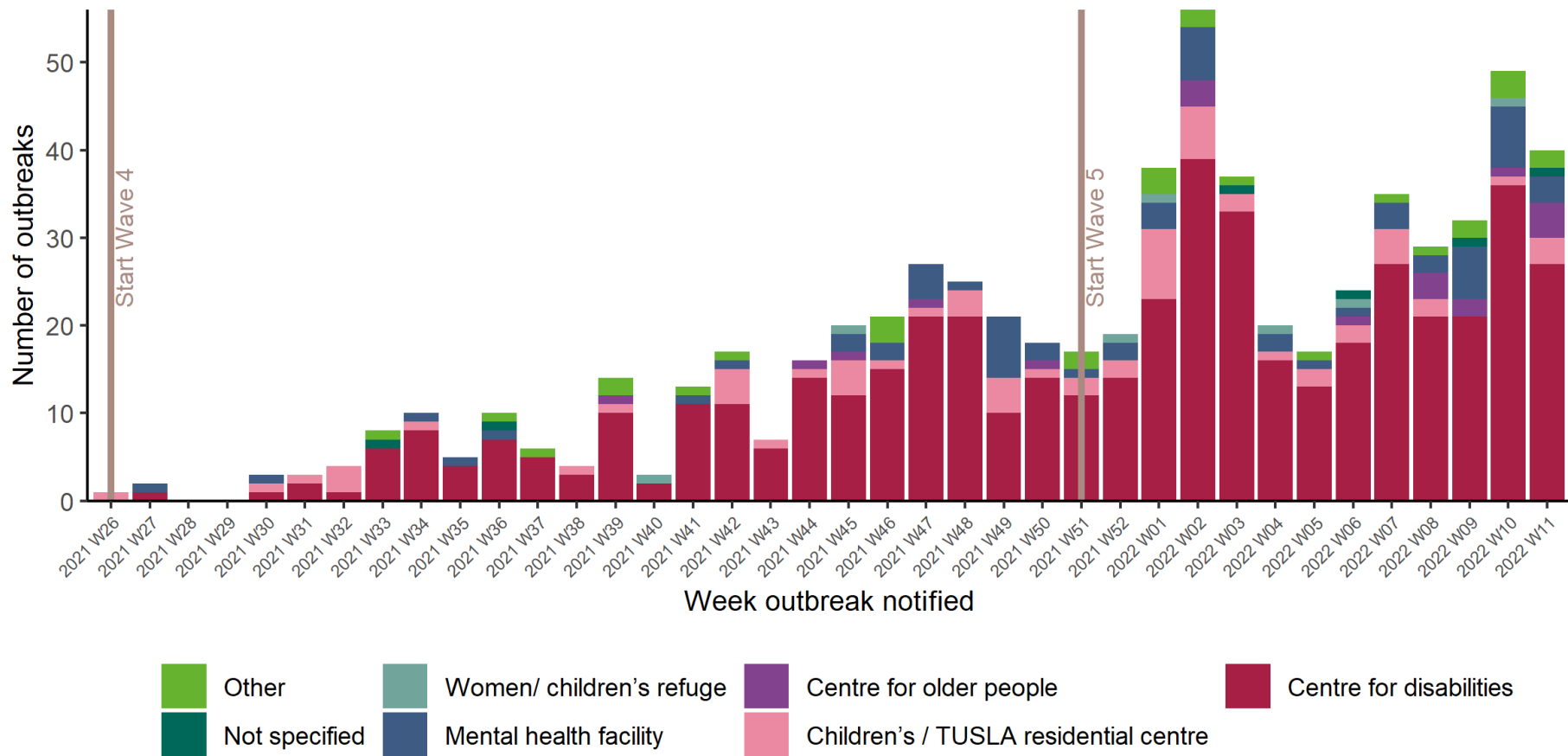
**Table 5:** Number of COVID-19 outbreaks and laboratory confirmed cases<sup>§</sup> in residential institutions in Ireland, from 27/06/2021 to midnight on 19/03/2022. *Data source: CIDR*

Outbreak location	Number of outbreaks notified				
	Week 11	Week 11 outbreaks: Range in no. of cases <sup>#</sup>	Week 26 2021 – Week 11 2022	Number open	Open outbreaks: Range in no. of cases <sup>#</sup>
Centre for disabilities	27	0-10	485	187	0-26
Centre for older people	4	4-11	19	11	0-18
Children’s / TUSLA residential centre	3	<5	64	12	1-6
Mental health facility	3	0-14	62	32	0-38
Women/children’s refuge	0	n/a	7	2	4-6
Other	2	5-7	28	10	0-20
Not Specified	1	n/a*	6	2	<5
<b>Total</b>	<b>40</b>	<b>0-14</b>	<b>671</b>	<b>256</b>	<b>0-38</b>

<sup>#</sup>n/a is used where there were no outbreaks in a category or where there are no confirmed cases currently linked to any outbreak in that category (see technical note 6, Appendix 2). <sup>§</sup>Due to delays in linkage of outbreak cases as a result of the surge, an interim measure has been applied whereby the higher number between aggregate and outbreak linked confirmed case numbers is used. \*No associated outbreak cases as yet.

<sup>1</sup> This section focuses on the following residential settings: Centres for disabilities, Centres for older people, Children’s/TUSLA residential centres and mental health facilities. Homeless services, addiction services, direct provision centres and prisons are reported in the Focus on Vulnerable Populations section.

**Note: Data are provisional**



**Figure 5:** Number of COVID-19 outbreaks in residential institutions by type of residential institution in Ireland, from 27/06/2021 to midnight on 19/03/2022. *Data source: CIDR*

**Note: Data are provisional**

### Focus on COVID-19 Outbreaks associated with Other Healthcare Settings

There were **440** COVID-19 outbreaks associated with other healthcare settings, with **1,761** laboratory confirmed COVID-19 cases<sup>§</sup>, notified in Ireland since 01/03/2020.

This brief overview of COVID-19 outbreaks in other healthcare settings notified up to midnight on 19/03/2022 (Table 6). Since Week 26 2021 there have been **240** outbreaks associated with other healthcare services and **76** of these remain open.

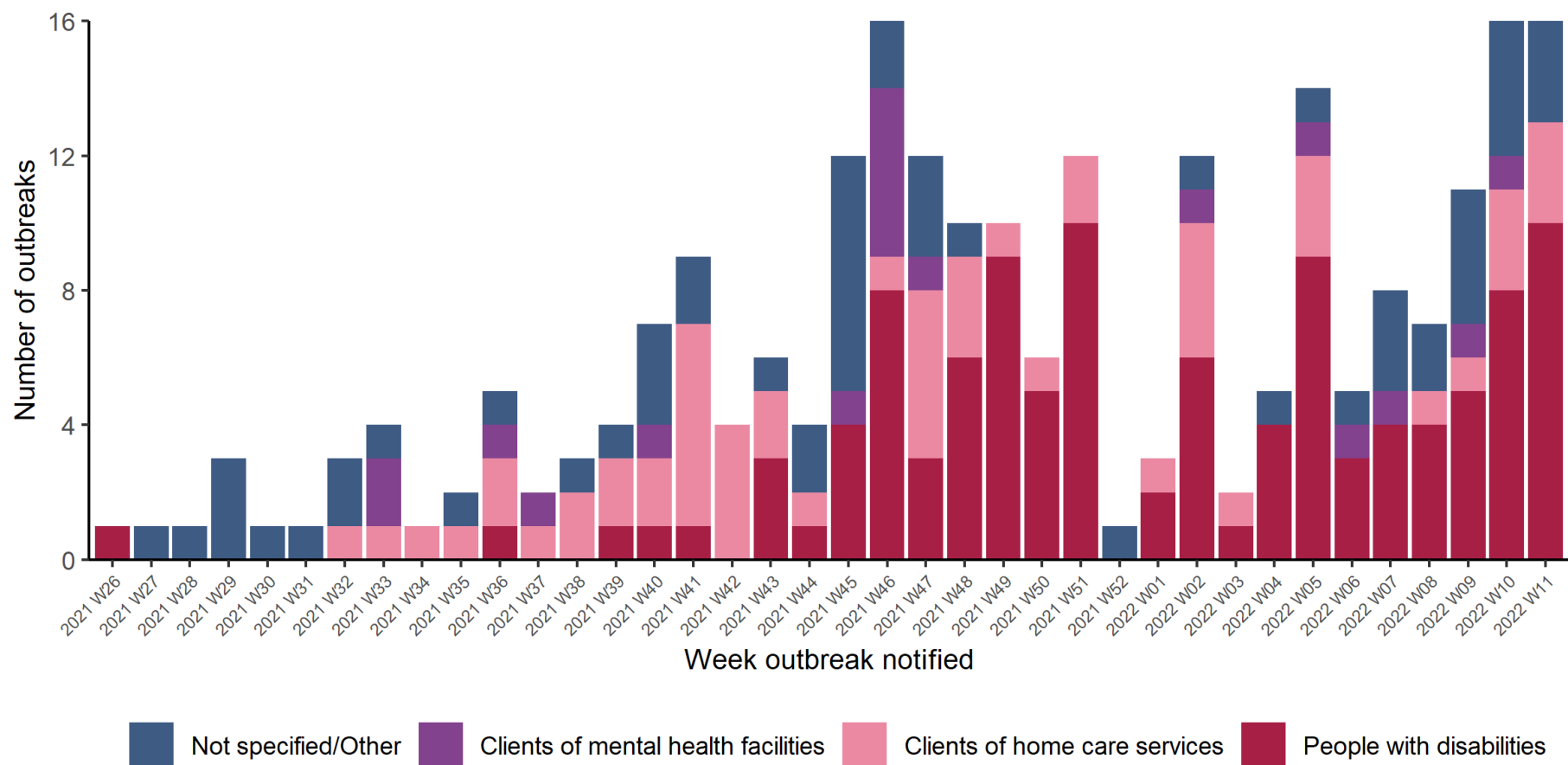
**There were 16 new COVID-19 outbreaks reported in other healthcare settings in Week 11 2022: three associated with home care services; ten in services for people with disabilities and; three in other healthcare services.**

**Table 6:** Number of COVID-19 outbreaks and laboratory confirmed cases<sup>§</sup> associated with other healthcare settings in Ireland, from 27/06/2021 to midnight on 19/03/2022. *Data source: CIDR*

Outbreak location	Number of outbreaks notified				
	Week 11	Week 11 outbreaks: Range in no. of cases <sup>#</sup>	Week 26 2021 – Week 11 2022	Number open	Open outbreaks: Range in no. of cases <sup>#</sup>
Clients of home care services	3	2-5	56	13	1-5
People with disabilities	10	0-14	110	42	0-14
Clients of mental health facilities	0	n/a	18	4	<5
All other healthcare service	3	<5	56	17	0-9
<b>Total</b>	<b>16</b>	<b>0-14</b>	<b>240</b>	<b>76</b>	<b>0-14</b>

<sup>#</sup>n/a is used where there were no outbreaks in a category or where there are no confirmed cases currently linked to any outbreak in that category (see technical note 6, Appendix 2). <sup>§</sup>Due to delays in linkage of outbreak cases as a result of the surge, an interim measure has been applied whereby the higher number between aggregate and outbreak linked confirmed case numbers is used.

**Note: Data are provisional**



**Figure 6:** Number of COVID-19 outbreaks in 'Other healthcare' settings by type of setting in Ireland, from 27/06/2021 to midnight on 19/03/2022. *Data source: CIDR*

**Note: Data are provisional**

## Focus on COVID-19 Outbreaks associated Other Vulnerable Populations

There were **1,056** COVID-19 outbreaks associated with the below described vulnerable populations, with **10,289** laboratory confirmed COVID-19 cases<sup>§</sup>, notified in Ireland since 01/03/2020.

This brief overview of COVID-19 outbreaks in vulnerable populations/settings only includes outbreaks involving Irish Travellers, the Roma community, outbreaks in direct provision centres, facilities for the homeless/those with addiction issues and prisons notified up to midnight on 19/03/2022 (Table 7). From 27/06/2021 to 19/03/2022, there have been **455** outbreaks in vulnerable populations, of which **138** remain open.

### There were seven new outbreaks reported in vulnerable populations during Week 11 2022:

- three outbreaks associated with Irish Travellers
- two outbreaks associated with direct provision centres
- one outbreak associated with the homeless community
- one outbreak associated with prison staff and prisoners

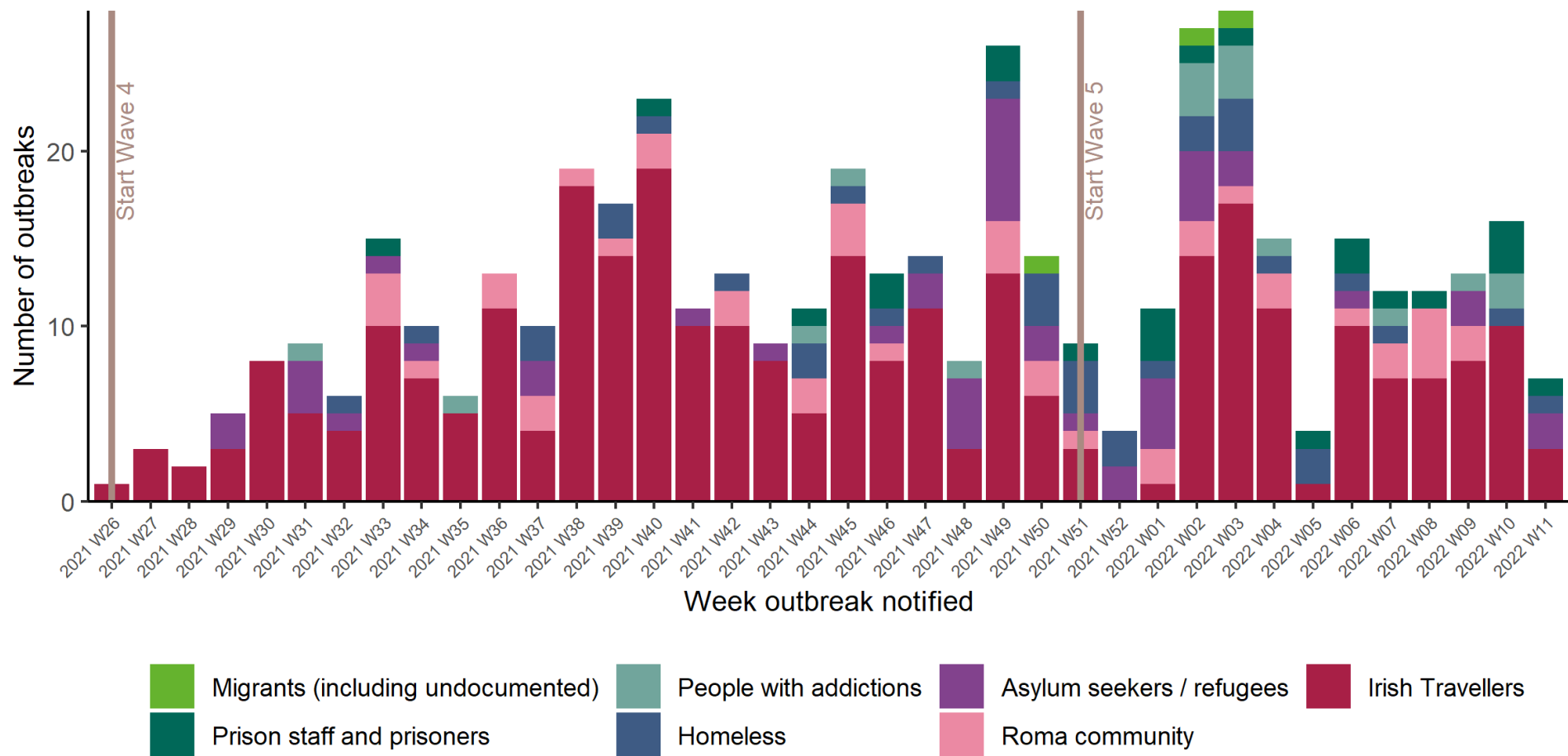
**Table 7:** Number of COVID-19 outbreaks and laboratory confirmed cases<sup>§</sup> in settings involving vulnerable populations, including the Irish Traveller community, Roma community, direct provision centres, facilities for the homeless/those with addiction issues and prisons notified from 27/06/2021 to midnight on 19/03/2022. *Data source: CIDR*

Vulnerable populations	Number of outbreaks notified				
	Week 11	Week 11 outbreaks: Range in no. of cases <sup>#</sup>	Week 26 2021 – Week 11 2022	Number open	Open outbreaks: Range in no. of cases <sup>#</sup>
Irish Travellers	3	<5	294	95	0-83
Roma community	0	n/a	42	10	0-9
Direct provision centres	2	<5	46	9	3-61
Homeless <sup>¥</sup>	1	<5	35	7	1-33
Persons with addictions	0	n/a	16	5	2-22
Prisoners/Prison staff	1	7	22	12	4-174
<b>Total</b>	<b>7</b>	<b>1-7</b>	<b>455</b>	<b>138</b>	<b>0-174</b>

<sup>¥</sup>Homeless facilities include some facilities that provide long term supported accommodation. Also includes staff of homeless facilities. <sup>#</sup>n/a is used where there were no outbreaks in a category or where there are no confirmed cases currently linked to any outbreak in that category (see technical note 6, Appendix 2). <sup>§</sup>Due to delays in linkage of outbreak cases as a result of the surge, an interim measure has been applied whereby the higher number between aggregate and outbreak linked confirmed case numbers is used.

**Note: Data are provisional**





**Figure 7:** Number of COVID-19 outbreaks associated with other vulnerable populations in Ireland, from 27/06/2021 to midnight on 19/03/2022. Note: to date, all migrant and asylum seeker associated outbreaks linked to direct provision centres. *Data source: CIDR*

**Note: Data are provisional**

### Focus on COVID-19 Outbreaks associated with school children (+/- staff), and childcare facilities

There were **1,384** COVID-19 outbreaks in schools, with **7,188** laboratory confirmed COVID-19 cases<sup>§</sup>; and **651** outbreaks in childcare facilities, with **3,472** laboratory confirmed COVID-19 cases<sup>§</sup>, notified in Ireland since 01/03/2020.

In total, **859** COVID-19 outbreaks associated with school children (+/- staff), and childcare facilities have been notified from 27/06/2021 up to midnight on 19/03/2022 (Table 8) and **80** of these outbreaks remain open.

**During Week 11 2022, there were six COVID-19 outbreaks notified associated with school children +/- staff.**

**Table 8:** Number of COVID-19 outbreaks and laboratory confirmed cases<sup>§</sup> associated with school children (+/- staff) and childcare facilities notified to midnight on 19/03/2022. *Data source: CIDR*

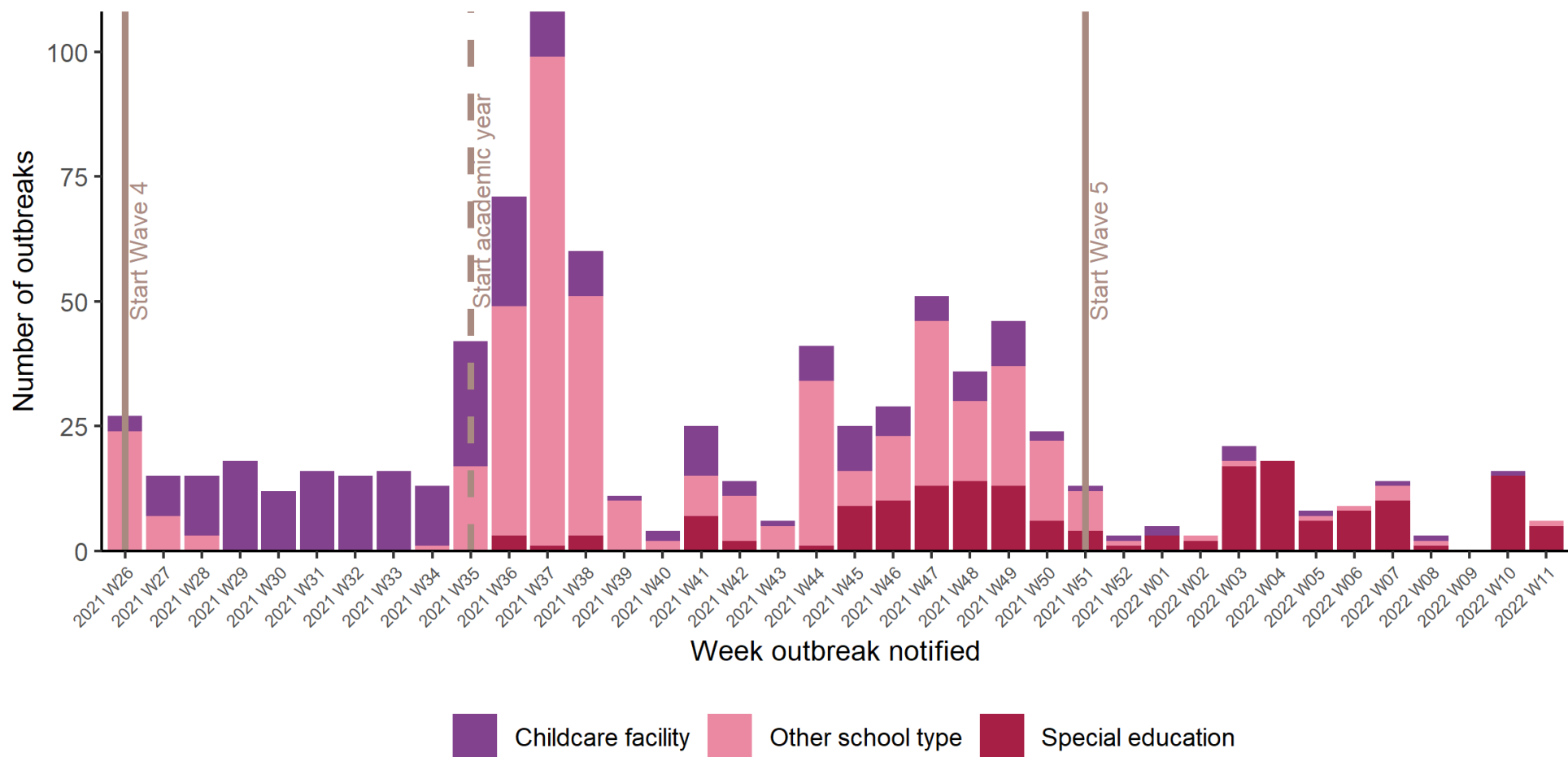
Outbreak location	Number of outbreaks notified				
	Week 11	Week 11 outbreaks: Range in no. of cases <sup>#</sup>	Week 26 2021 – Week 11 2022	Number open	Open outbreaks: Range in no. of cases <sup>#</sup>
Special education	5	<5	171	58	0-14
Other school type	1	6	434	6	0-18
<b>Total School*##</b>	<b>6</b>	<b>0-6</b>	<b>605</b>	<b>64</b>	<b>0-18</b>
Childcare facility	0	n/a	254	16	0-13
<b>Total</b>	<b>6</b>	<b>0-6</b>	<b>859</b>	<b>80</b>	<b>0-18</b>

\*These outbreaks are outbreaks associated with school children +/- or school staff. Transmission of COVID-19 within the school has not necessarily been established in these outbreaks.

#n/a is used where there were no outbreaks in a category or where there are no confirmed cases currently linked to any outbreak in that category (see technical note 6, Appendix 2). ##In Week 44 2021, 32 outbreaks associated with schools that occurred during May and June 2021 (2020/21 academic year) were retrospectively notified. Please note not all school outbreaks require public health prioritization and therefore may not be reported to CIDR. Therefore, school settings (primary, post-primary) other than special educational needs classes/schools are grouped under 'Other school type'.

§Due to delays in linkage of outbreak cases as a result of the surge, an interim measure has been applied whereby the higher number between aggregate and outbreak linked confirmed case numbers is used.

**Note: Data are provisional**



**Figure 8:** Number of COVID-19 outbreaks in school and childcare facility settings, from 27/06/2021 to midnight on 19/03/2022. *Data source: CIDR*

**Note: Data are provisional**

Appendices  
Appendix 1

**Table A:** Number of COVID-19 outbreaks notified in Ireland by outbreak location and closure status, to midnight 19/03/2022, N=22,932. *Data source: CIDR*

Outbreak Location	Outbreak closure status (all outbreak classifications)		
	Closed	Open	Total
Hospital	710	156	<b>866</b>
Nursing home	881	303	<b>1184</b>
Community Hospital/Long-stay unit	117	36	<b>153</b>
Residential institution	1111	290	<b>1401</b>
Other healthcare service	364	76	<b>440</b>
School**	1320	64	<b>1384</b>
Childcare facility	635	16	<b>651</b>
University/college***	63	4	<b>67</b>
Workplace	1253	12	<b>1265</b>
Retail outlet	388	1	<b>389</b>
Hotel	111	0	<b>111</b>
Guest house/ B&B	14	0	<b>14</b>
Public house	117	0	<b>117</b>
Restaurant / Cafe	222	1	<b>223</b>
Travel related	258	17	<b>275</b>
Transport	65	2	<b>67</b>
Private house*	6555	5638	<b>12193</b>
Extended family	759	179	<b>938</b>
Community outbreak	524	5	<b>529</b>
Social gathering	277	9	<b>286</b>
Religious/Other ceremony	133	9	<b>142</b>
Sporting activities/fitness	95	0	<b>95</b>
Other recreation activity	26	0	<b>26</b>
Personal grooming service	48	0	<b>48</b>
Other	55	4	<b>59</b>
Unknown	5	0	<b>5</b>
Not specified	4	0	<b>4</b>
<b>Total</b>	<b>16110</b>	<b>6822</b>	<b>22932</b>

\*It is common practice not to close private house outbreaks on CIDR due to the large volume of these types of outbreaks on CIDR

\*\*These outbreaks are outbreaks associated with school children +/- school staff. Transmission of COVID-19 within the school has not necessarily been established in these outbreaks.

\*\*\*These outbreaks are associated with a university/college location and do not include outbreaks among third level students that occurred at other locations

## Appendix 2 Technical Notes

1. Data are based on statutory notifications and were extracted from the National Computerised Infectious Disease Reporting (CIDR) system. Data are provisional and subject to ongoing review, validation and update. As a result, figures in this report may differ from previously published figures.

2. For surveillance purposes, the following COVID-19 outbreak definition is used for notifying COVID-19 outbreaks/clusters:

### **Confirmed\***

- **There is a cluster/outbreak, with two or more cases of laboratory confirmed COVID-19 infection regardless of symptom status. This includes cases with symptoms and cases who are asymptomatic.**

**OR**

- **There is a cluster/outbreak, with two or more cases of illness with symptoms consistent with COVID-19 infection (as per the COVID-19 case definition), and at least one person is a confirmed case of COVID-19.**

\* From September 21<sup>st</sup> 2020, suspected COVID outbreaks should be reported with the disease category 'Acute Respiratory Infection (ARI)'. If one or more cases linked to the outbreak are subsequently confirmed as COVID-19, the ARI outbreak should be reclassified to being a COVID-19 outbreak. Outbreaks of suspected COVID-19 which were notified before September 21<sup>st</sup> 2020, and met the previous COVID-19 outbreak definition should remain as COVID-19 outbreaks on CIDR.

The COVID-19 case definition is detailed on the Health Protection Surveillance Centre (HPSC) website: <https://www.hpsc.ie/a-z/respiratory/coronavirus/novelcoronavirus/casedefinitions/>

3. This report includes confirmed and suspected COVID-19 outbreaks.

4. An "Open" or "Closed" outbreak is defined as an outbreak where the outbreak status is "Open" or "Closed" on CIDR. In order to declare an outbreak "Closed" the outbreak location should not have experienced any new cases of infection which meet the case definition for a period of 28 days (two incubation periods).

5. Outbreak type (family/general) indicates whether an outbreak is confined to a family (family outbreak) or affects members of more than one household (general outbreak).

6. The "range in number of cases" presented in Tables 3 to 8 is based on laboratory confirmed cases linked to an outbreak in CIDR. The priority is to notify outbreaks to CIDR in a timely fashion and, while every effort is made to link cases to outbreaks as quickly as possible, there can sometimes be a delay in linking cases to the outbreak. Ranges in number of cases that include "0" include outbreaks that currently have no linked cases. Data in CIDR are continuously reviewed and updated and this includes the identification and linking of outbreak-associated cases.