

# Epidemiology of COVID-19 Outbreaks/Clusters in Ireland

## Weekly Report

Prepared by HPSC on 22<sup>nd</sup> February 2022

**Week 7 2022 (week ending 19<sup>th</sup> February 2022)**

### Note: Data are provisional

This report includes data extracted from CIDR on 22<sup>nd</sup> February 2022 at 8:30am and includes COVID-19 outbreaks notified on CIDR up to midnight 19/02/2022.

<b>Total number of COVID-19 outbreaks notified since Week 10 2020:</b>	<b>22,402</b>
<b>Number of COVID-19 outbreaks notified from Week 26 2021:</b>	<b>5,030</b>
<b>Number of COVID-19 outbreaks notified since Week 26 2021 OPEN:</b>	<b>1,685</b>
<b>Number of COVID-19 outbreaks notified since Week 26 2021 CLOSED:</b>	<b>3,345</b>
<b>Number of COVID-19 outbreaks notified in Week 7 2022:</b>	<b>138</b>

Waves (weeks)	Dates
Wave 1 (Weeks 10 – 31 2020)	01/03/2020 – 01/08/2020
Wave 2 (Week 32 – 47 2020)	02/08/2020 – 21/11/2020
Wave 3 (Week 48 2020 – Week 25 2021)	22/11/2020 – 26/06/2021
Wave 4 (Week 26 – 50 2021)	27/06/2021 – 18/12/2021
Wave 5 (Week 51 2021 onwards)	19/12/2021 onwards

*Regional Departments of Public Health are currently prioritising the investigation and reporting of outbreaks in settings that benefit most from Public Health and clinical intervention. These settings include acute hospitals, nursing homes, community hospital/long-stay units, residential institutions, other healthcare settings, vulnerable populations, special educational needs schools/classes and childcare facilities. For this reason, outbreaks in other settings may be underestimated in this report. Tables 1, 2A and 2B focus on these key settings, with the remaining settings coloured grey.*

*In addition, due to a technical issue and reduced processing over the extended holiday weekend, alongside the surge in case numbers, the processing time of case notifications on CIDR has increased. Outbreak cases may not yet be processed and linked to their outbreak on CIDR. Due to these delays, an interim measure has been applied whereby the higher number between aggregate and outbreak linked confirmed case numbers is used in outbreak settings (report pages 9-19).*

*Due to the cyber-attack on the HSE IT systems on 14/05/2021, CIDR was unavailable for the reporting of COVID-19 outbreaks from 14/05/2021 to the 28/06/2021. As a result, there has been a delay in reporting for many outbreaks on CIDR. To account for this, outbreak week for all outbreaks created between May 14<sup>th</sup> and October 9<sup>th</sup> is based on the following algorithm: earliest of 1. outbreak recognition date; 2. first reported date; 3. outbreak created date. Outbreak week is based on*

**Note: Data are provisional**

*outbreak created date for all outbreaks created on or before May 13<sup>th</sup> 2021, and on or after October 10<sup>th</sup> 2021.*

Please note COVID-19 outbreaks and cases are continuously validated/updated on Ireland's National Computerised Infectious Disease Reporting System (CIDR).

The COVID-19 outbreak definition is available in appendix 2 of this report and on the HPSC website at: <https://www.hpsc.ie/a-z/respiratory/coronavirus/novelcoronavirus/casedefinitions/covid-19outbreakcasedefinitionforireland/>

Sincere thanks are extended to all those who are participating in the collection of data and reporting of data used in these reports. This includes the HSE COVID-19 Contact Management Programme (CMP), staff in ICU units, notifying clinicians, laboratory staff, public health doctors, nurses, surveillance scientists, microbiologists and administrative staff.

**22,402 COVID-19 outbreaks have been reported in Ireland since Week 10, 2020 (Figure 1).**

### Summary (Week 26 2021 to Week 7 2022)

**5,030** COVID-19 outbreaks have been reported from Week 26 2021 onwards (week beginning 27/06/2021; fourth wave of COVID-19 infection in Ireland) and key outbreak locations are as follows:

- 357 (7.1%) were reported in hospitals
- 465 (9.2%) were reported in nursing homes
- 57 (1.1%) were reported in community hospital/long-stay units
- 619 (12.3%) were reported in residential institutions
- 193 (3.8%) were reported in 'other' healthcare services
- 581 (11.6%) were reported in schools<sup>#</sup>
- 252 (5.0%) were reported in childcare facilities
- 470 (9.3%) were reported in workplaces
- 2,036 (40.5%) were reported in a range of other settings\*, including private houses (n=1,020, 20.3%), retail outlets (n=153, 3.0%); extended family (n=144, 2.9%) and social gatherings (n=122, 2.4%). See Table 1 for further details

3,345 outbreaks have been closed and 1,685 outbreaks are open (See Appendix 1, Table A for breakdown of outbreaks by location and outbreak status. Note that it is common practice not to close private house outbreaks on CIDR due to the large volume of outbreaks in this category).

### Wave 5 (Week 51 2021 – Week 7 2022)

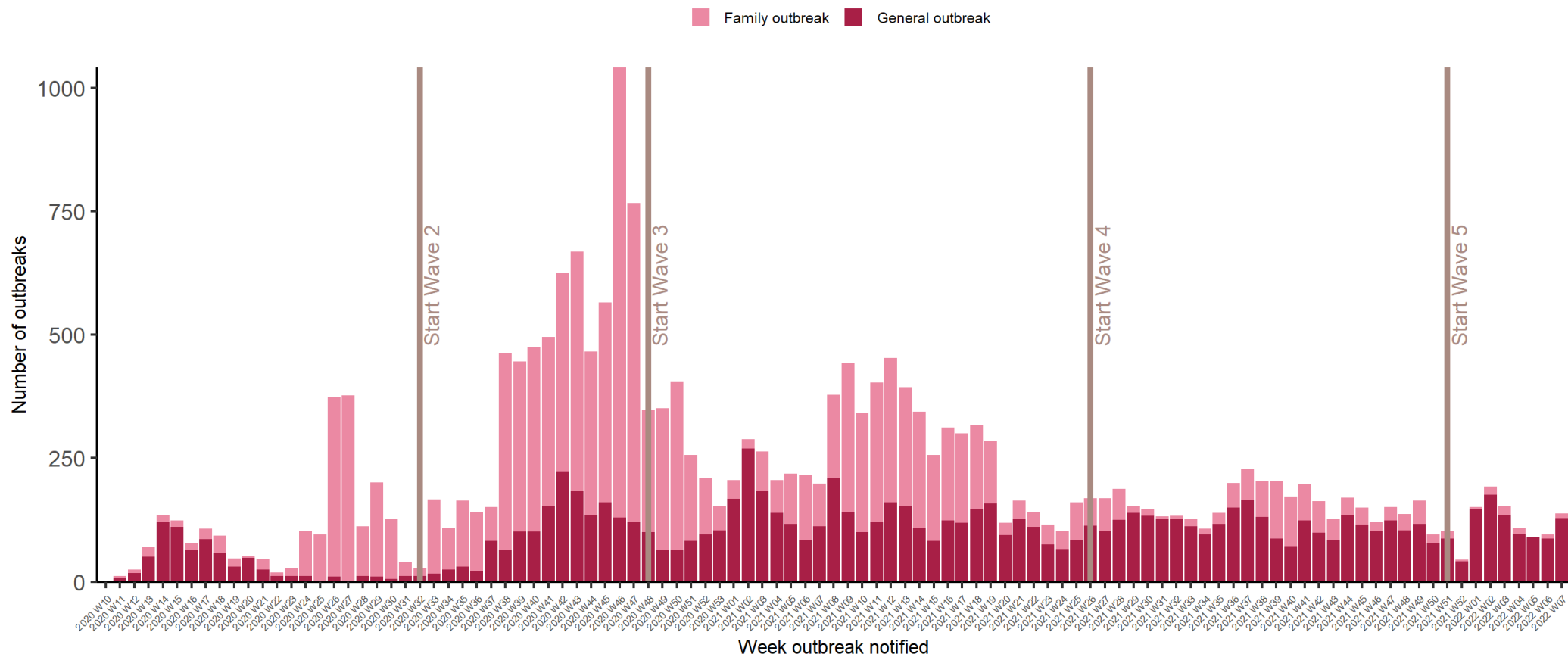
1,080 of the 5,030 COVID-19 outbreaks reported from Week 26 2021 occurred since the beginning of wave 5 (week beginning 19/12/2021). Of these, 165 (15.3%) were reported in hospitals, 297 (27.5%) were reported in nursing homes, 23 (2.1%) were reported in community hospital/long-stay units and 308 (28.5%) were reported in residential institutions.

### Summary (Week 7, 2022)

In **Week 7** 2022, there were **138** COVID-19 outbreaks notified:

- The overall number of outbreaks notified in Week 7 2022 increased by 42 compared to Week 6 2021
- In healthcare settings there were:
  - 22 acute hospital outbreaks notified
  - 43 nursing home outbreaks notified
  - one community hospital/long-stay unit outbreak notified
  - 37 residential institution outbreaks notified
  - 11 outbreaks associated with other healthcare services notified
- In educational settings there were:
  - 12 outbreaks associated with schools
  - one outbreak associated with childcare facilities
- The remaining 11 outbreaks included: private houses (n=6; Irish Traveller Community (n=5); Roma community (n=1)); extended family (n=3; Irish Traveller community (n=2); Roma community (n=1)); and workplace (n=2)

*<sup>#</sup>In Week 44 2021, 32 outbreaks associated with schools that occurred during May and June 2021 (2020/2021 academic year) were retrospectively notified.*



**Figure 1:** Epi-curve of COVID-19 outbreaks in all settings notified in Ireland by week of notification and outbreak type (see technical note 5, Appendix 2) to midnight on 19/02/2022, N=22,402. *Data source: CIDR*

Vertical lines indicate the timeline of epidemic waves of COVID-19 infection in Ireland. Second wave of infection commenced in Week 32 2020 (week beginning 02/08/2020); the third wave commenced in Week 48 2020 (week beginning 22/11/2020); the fourth wave commenced Week 26 2021 (week beginning 27/06/2021); the fifth wave commenced Week 51 2021 (week beginning 19/12/2021).

**Note:** Family outbreaks reported in July 2020 (weeks 27-31 2020) were composed largely of late notified outbreaks from the period March to May 2020 (weeks 10-22 2020). In addition, the creation of private house outbreaks is not prioritised in waves 3, 4 and 5 and therefore the number of family outbreaks in these waves is likely to be an underestimate.

**Note: Data are provisional**

**Table 1:** Number of COVID-19 outbreaks notified in Ireland by outbreak location and by week of notification from 27/06/2021 to midnight on 19/02/2022, and difference in number of outbreaks notified in Week 7 2022 compared to the previous week, N=5,030. *Data source: CIDR*

Outbreak location	Week of Outbreak Notification									Difference in number of outbreaks notified since last week	Total Wave 4 and 5 (Week 26 2021 - Week 7 2022)
	2021		2022								
	Week 26-51	52	1	2	3	4	5	6	7		
Hospital	212	8	21	31	13	18	17	15	22	+7	357
Nursing home	176	7	54	59	48	30	27	21	43	+22	465
Community Hospital / Long-stay unit	35	1	8	4	3	0	2	3	1	-2	57
Residential institution	332	22	45	66	47	22	20	28	37	+9	619
Other healthcare services	140	1	3	12	2	5	14	5	11	+6	193
School**§	510	2	3	3	18	17	7	9	12	+3	581
Childcare Facility	243	1	2	0	3	1	1	0	1	+1	252
Workplace	458	0	5	0	2	1	1	1	2	+1	470
University/College**	15	0	0	0	0	0	0	0	0	0	15
Retail outlet	152	0	1	0	0	0	0	0	0	0	153
Restaurant / Café	105	0	1	0	0	0	0	0	0	0	106
Public house	71	0	1	0	0	0	0	0	0	0	72
Hotel	84	0	0	0	0	0	0	0	0	0	84
Guest house/ B&B	9	0	0	0	0	0	1	0	0	0	10
Private house: family outbreaks	918	2	3	16	17	9	0	8	6	-2	979
Private house: general outbreaks	36	0	2	1	0	1	0	1	0	-1	41
Extended family	132	0	0	1	1	4	1	2	3	+1	144
Community outbreak	51	0	0	0	0	0	0	0	0	0	51
Travel related	59	0	0	0	0	0	0	0	0	0	59
Transport	26	0	0	0	0	0	0	0	0	0	26
Social gathering	120	0	0	0	0	0	0	2	0	-2	122
Religious/Other ceremony	60	0	2	0	0	0	0	1	0	-1	63
Sporting activity/fitness	52	0	0	0	0	0	0	0	0	0	52
Other recreation activity	22	0	0	0	0	0	0	0	0	0	22
Personal grooming service	26	0	0	0	0	0	0	0	0	0	26
Other	9	0	0	0	0	0	0	0	0	0	9
Unknown	2	0	0	0	0	0	0	0	0	0	2
<b>Total</b>	<b>4055</b>	<b>44<sup>†</sup></b>	<b>151</b>	<b>193</b>	<b>154</b>	<b>108</b>	<b>91</b>	<b>96</b>	<b>138</b>	<b>+42</b>	<b>5030</b>

\*These outbreaks are outbreaks associated with school children +/- or school staff. Transmission of COVID-19 within the school has not necessarily been established in these outbreaks. \*\*These outbreaks are associated with a university/college location and do not include outbreaks among third level students that occurred at other locations. †In Week 44 2021, 32 outbreaks associated with schools that occurred during May and June 2021 (2020/21 academic year) were retrospectively notified. ‡Outbreak reporting to CIDR was likely impacted by the extended Christmas weekend in Week 52 and the surge in case numbers. Outbreaks in settings in grey may be underestimated due to public health focus on key settings at present. §Please note not all school outbreaks require public health prioritization and therefore may not be reported to CIDR.

**Note: Data are provisional**

**Table 2A:** Number of COVID-19 outbreaks by outbreak location and HSE-Area notified in Ireland from 27/06/2021 to midnight on 19/02/2022 N=5,030. *Data source: CIDR*

Outbreak Location	East	Midlands	MidWest	NorthEast	NorthWest	SouthEast	South	West	HPSC#	Total
Hospital	145	18	29	45	41	22	29	28	0	357
Nursing home	152	29	47	43	20	44	75	55	0	465
Community Hospital/Long-stay unit	14	2	4	2	11	9	9	6	0	57
Residential institution	196	28	93	92	40	56	74	40	0	619
Other healthcare service	27	1	51	19	13	20	29	33	0	193
School*##\$	160	59	125	64	71	19	43	40	0	581
Childcare facility	83	21	29	46	20	11	13	29	0	252
Workplace	123	24	36	81	42	51	78	35	0	470
Travel related	7	10	1	6	10	2	21	1	1	59
University/college**	6	0	4	1	3	0	1	0	0	15
Retail outlet	65	0	11	21	17	16	17	6	0	153
Restaurant / Café	31	2	11	10	16	12	17	7	0	106
Public house	10	2	4	10	20	3	15	8	0	72
Hotel	7	1	4	14	12	12	19	15	0	84
Guest house/ B&B	3	0	0	2	1	2	2	0	0	10
Private house	34	180	199	56	419	7	41	84	0	1020
Extended family	6	15	36	0	42	8	12	25	0	144
Community outbreak	4	3	2	1	10	1	26	4	0	51
Social gathering	3	7	37	16	36	6	15	2	0	122
Religious/Other ceremony	7	1	1	13	10	8	20	3	0	63
Transport	3	3	1	0	10	3	1	5	0	26
Sporting activity/fitness	12	0	6	9	6	9	7	3	0	52
Personal grooming service	10	1	2	5	0	3	5	0	0	26
Other recreation activity	11	1	0	3	0	3	2	2	0	22
Other/Unknown/Not specified	0	0	4	1	0	3	1	2	0	11
<b>Total</b>	<b>1119</b>	<b>408</b>	<b>737</b>	<b>560</b>	<b>870</b>	<b>330</b>	<b>572</b>	<b>433</b>	<b>1</b>	<b>5030</b>

\*These outbreaks are outbreaks associated with school children +/- school staff. Transmission of COVID-19 within the school has not necessarily been established in these outbreaks. \*\*These outbreaks are associated with a university/college location and do not include outbreaks among third level students that occurred at other locations. #Outbreak involves three or more public health regions. ##In Week 44 2021, 32 outbreaks associated with schools that occurred during May and June 2021 (2020/21 academic year) were retrospectively notified. Outbreaks in settings in grey may be underestimated due to public health focus on key settings at present. \$Please note not all school outbreaks require public health prioritization and therefore may not be reported to CIDR.

**Note: Data are provisional**

**Table 2B:** Number of COVID-19 outbreaks by outbreak location and HSE-Area notified in Ireland during Week 7 2022 (week ending 19/02/2022), N=138. *Data source: CIDR*

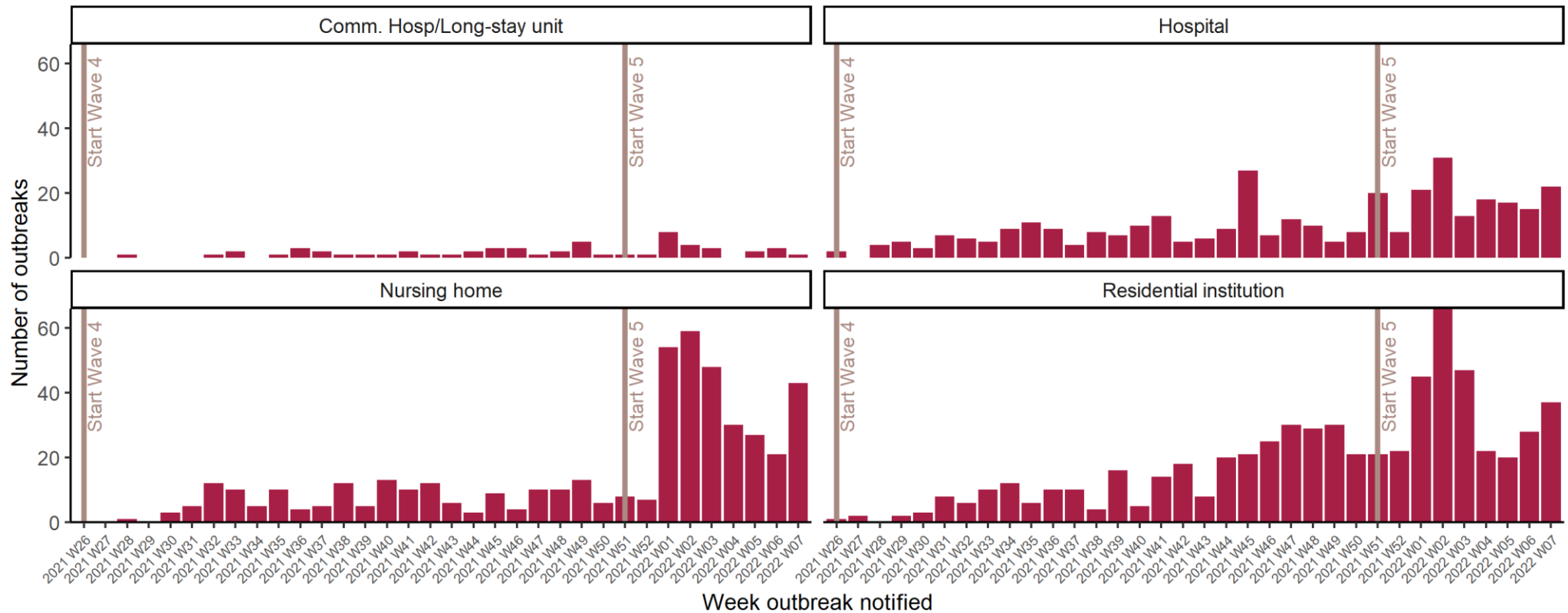
<b>Outbreak Location</b>	<b>East</b>	<b>Midlands</b>	<b>MidWest</b>	<b>NorthEast</b>	<b>NorthWest</b>	<b>SouthEast</b>	<b>South</b>	<b>West</b>	<b>Total</b>
Hospital	13	0	1	4	3	0	1	0	<b>22</b>
Nursing home	22	0	5	4	3	1	7	1	<b>43</b>
Community Hospital / Long-stay unit	0	0	0	0	1	0	0	0	<b>1</b>
Residential institution	13	0	7	7	5	0	2	3	<b>37</b>
Other healthcare service	1	0	2	1	0	2	1	4	<b>11</b>
School* <sup>§</sup>	4	1	3	0	1	1	1	1	<b>12</b>
Childcare facility	0	0	0	0	0	0	0	1	<b>1</b>
Workplace	0	0	0	0	0	0	2	0	<b>2</b>
Private house	0	0	0	1	0	0	0	5	<b>6</b>
Extended family	0	0	0	0	0	0	1	2	<b>3</b>
<b>Total</b>	<b>53</b>	<b>1</b>	<b>18</b>	<b>17</b>	<b>13</b>	<b>4</b>	<b>15</b>	<b>17</b>	<b>138</b>

\*These outbreaks are outbreaks associated with school children +/- school staff. Transmission of COVID-19 within the school has not necessarily been established in these outbreaks.

Outbreaks in settings in grey may be underestimated due to public health focus on key settings at present. <sup>§</sup>Please note not all school outbreaks require public health prioritization and therefore may not be reported to CIDR.

## COVID-19 Outbreaks/Clusters in Residential Facilities and Hospital settings in Ireland

A summary of COVID-19 outbreaks linked to nursing homes, acute hospitals, community hospital/long-stay units, and other residential institutions is shown in Figure 2 (A-D), in the subsequent “Focus” sections and Tables 3-7.



**Figure 2:** Epi-curve of COVID-19 outbreaks in: Acute Hospitals, Nursing Homes, Community Hospitals/Long-stay units and Residential institutions notified in Ireland by week of notification, from 27/06/2021 to midnight on 19/02/2022. *Data source: CIDR*

**Note: Data are provisional**



### Focus on COVID-19 Outbreaks in Nursing Homes and Community Hospitals

There have been **1,170** COVID-19 outbreaks in nursing homes and community hospital/long stay units, with **24,820** laboratory confirmed COVID-19 cases<sup>§</sup>, notified in Ireland since 01/03/2020.

From 27/06/2021 to 19/02/2022, **522** outbreaks in nursing homes or community hospital/long-stay units have been notified and **308** of these outbreaks remain open (Table 3).

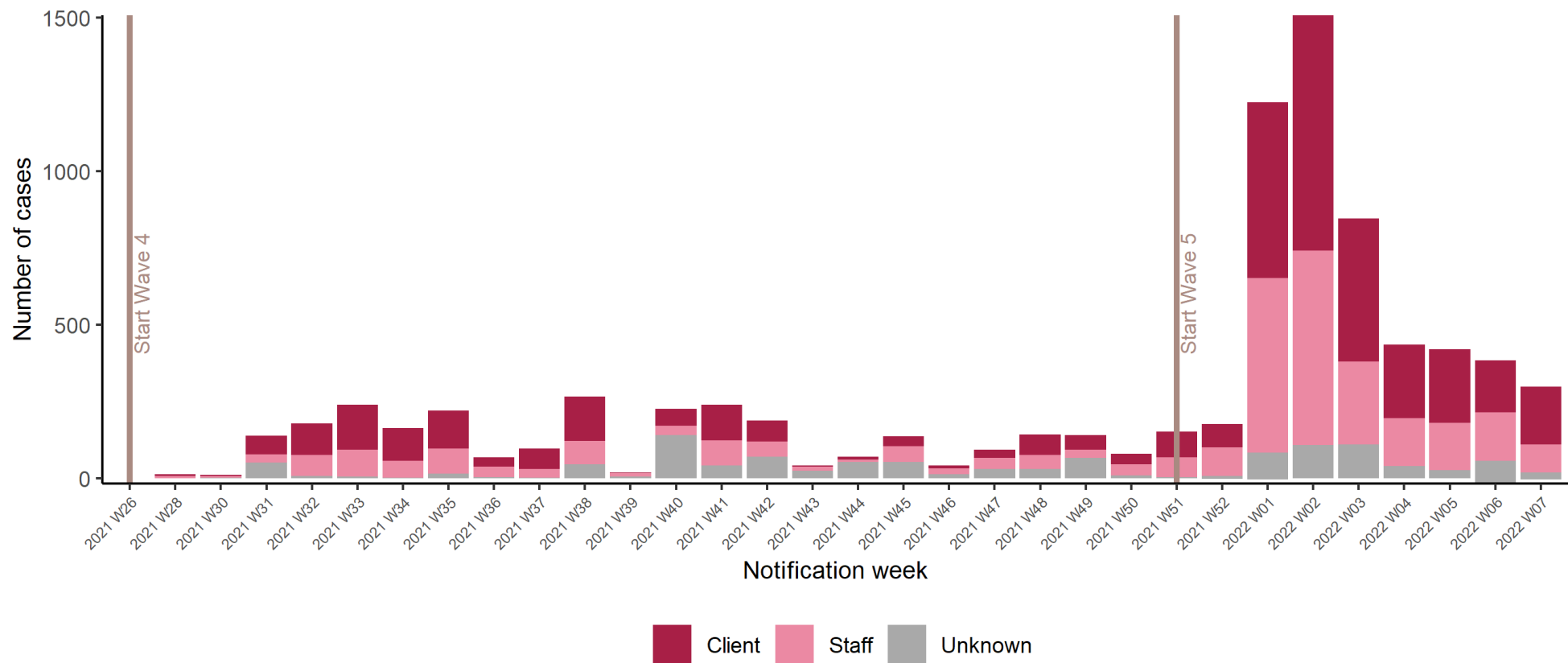
**There were 43 new COVID-19 outbreaks reported in nursing homes and one reported in community hospitals during Week 7 2022.**

**Table 3:** Number of COVID-19 outbreaks and laboratory confirmed cases<sup>§</sup> in nursing homes and community hospital/long-stay units in Ireland, from 27/06/2021 to midnight on 19/02/2022. *Data source: CIDR*

Outbreak location	Number of outbreaks notified				
	Week 7	Week 7 outbreaks: Range in no. of cases <sup>#</sup>	Week 26 2021 – Week 7 2022	Number open	Open outbreaks: Range in no. of cases <sup>#</sup>
Nursing home	43	0-74	465	285	0-82
Community Hospital/Long-stay unit	1	9	57	23	2-46
<b>Total</b>	<b>44</b>	<b>0-74</b>	<b>522</b>	<b>308</b>	<b>0-82</b>

<sup>#</sup>n/a is used where there were no outbreaks in a category or where there are no confirmed cases currently linked to any outbreak in that category (see technical note 6, Appendix 2). <sup>§</sup>Due to delays in linkage of outbreak cases as a result of the recent surge, an interim measure has been applied whereby the higher number between aggregate and outbreak linked confirmed case numbers is used.

**Note: Data are provisional**



**Figure 3:** Epi-curve of confirmed COVID-19 cases linked to outbreaks in nursing homes and community hospital/long-stay units by staff/client status and date of notification from 27/06/2021 to midnight on 19/02/2022. *Data source: CIDR*

**Note: Data are provisional**

### Focus on COVID-19 Outbreaks in Acute Hospitals

There were **781** COVID-19 outbreaks in acute hospitals, with **8,913** laboratory confirmed COVID-19 cases<sup>§</sup>, notified in Ireland since 01/03/2020. From 27/06/2021 to 19/02/2022, **357** outbreaks in acute hospitals have been notified and **139** of these outbreaks remain open (Table 4).

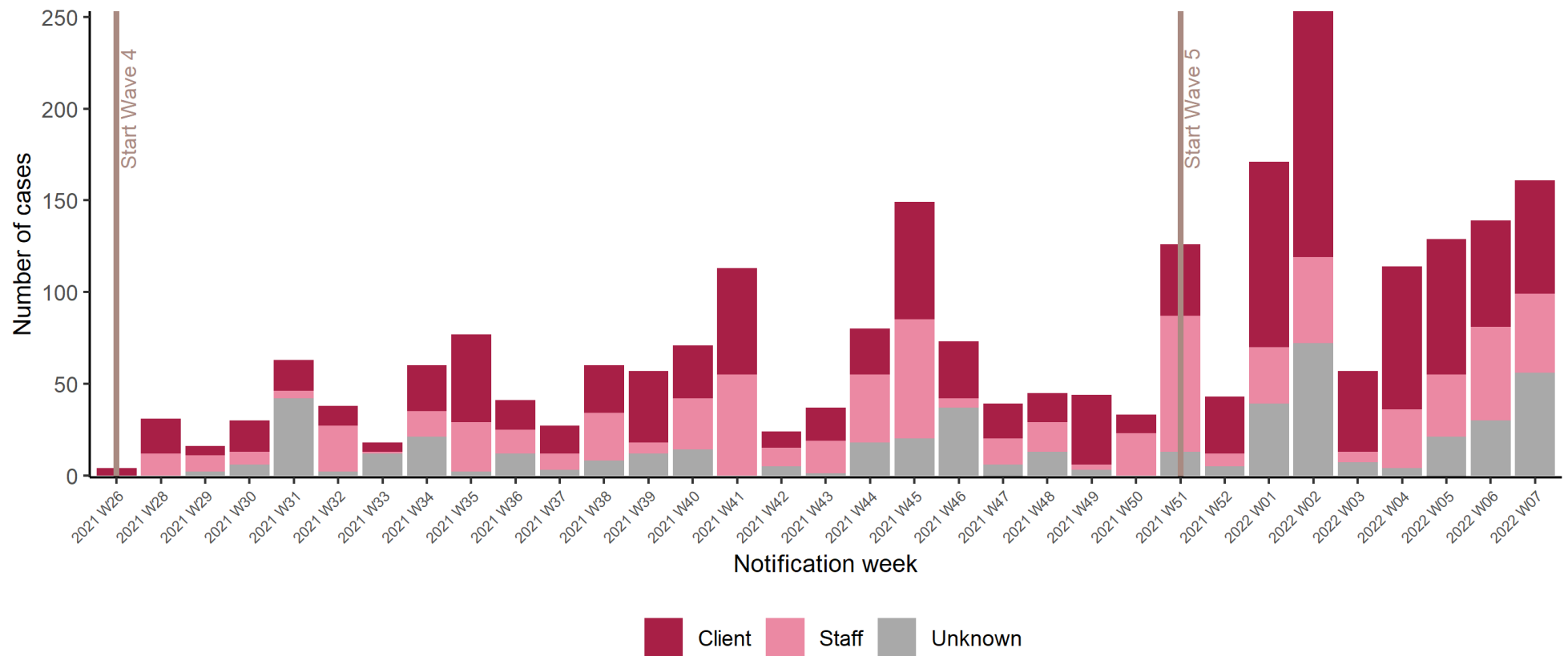
**There were 22 new COVID-19 outbreaks reported in acute hospitals during Week 7 2022.**

**Table 4:** Number of COVID-19 outbreaks and laboratory confirmed cases<sup>§</sup> in acute hospital settings in Ireland, from 27/06/2021 to midnight on 19/02/2022. *Data source: CIDR*

Outbreak location: Acute Hospitals	Number of outbreaks notified				
	Week 7	Week 7 outbreaks: Range in no. of cases	Week 26 2021 – Week 7 2022	Number open	Open outbreaks: Range in no. of cases
	22	2-32	357	139	1-47

<sup>§</sup>Due to delays in linkage of outbreak cases as a result of the recent surge, an interim measure has been applied whereby the higher number between aggregate and outbreak linked confirmed case numbers is used.

**Note: Data are provisional**



**Figure 4:** Epi-curve of confirmed COVID-19 cases linked to outbreaks in hospitals by staff/client status and date of notification from 27/06/2021 to midnight on 19/02/2022. *Data source: CIDR*

**Note: Data are provisional**

### Focus on COVID-19 Outbreaks in Residential Institutions (please see footnote<sup>1</sup>)

There were **963** COVID-19 outbreaks in residential institutions, with **5,804** laboratory confirmed COVID-19 cases<sup>§</sup>, notified in Ireland since 01/03/2020. From 27/06/2021 to 19/02/2022, **519** outbreaks in residential institutions have been notified and **270** of these outbreaks remain open.

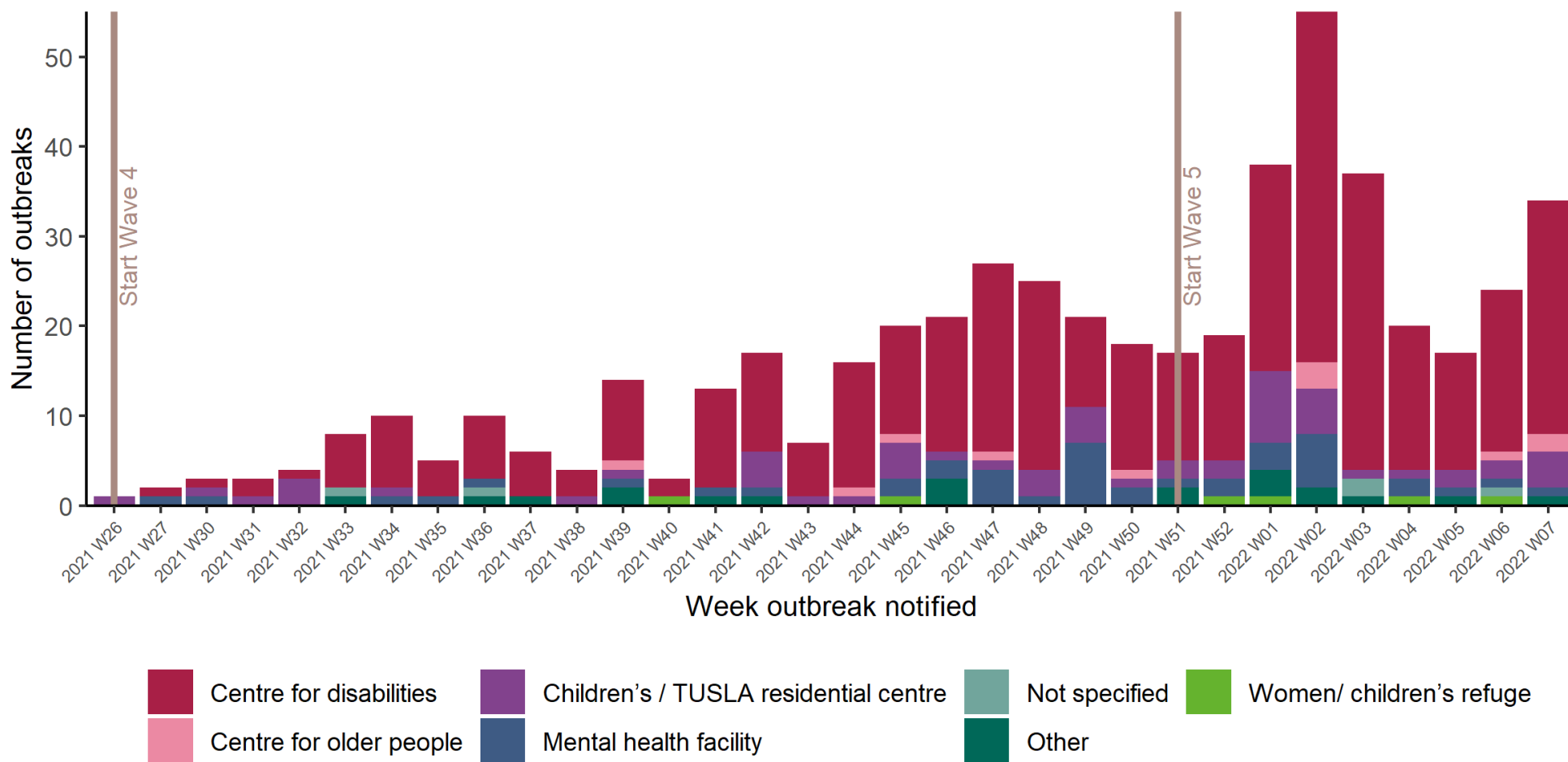
**There were 34 new COVID-19 outbreaks reported in residential institutions in Week 7 2022: 26 in centres for disabilities; four in children's/TUSLA residential centres; two in centres for older people; one in a mental health facility and; one in another location.**

**Table 5:** Number of COVID-19 outbreaks and laboratory confirmed cases<sup>§</sup> in residential institutions in Ireland, from 27/06/2021 to midnight on 19/02/2022. *Data source: CIDR*

Outbreak location	Number of outbreaks notified				
	Week 7	Week 7 outbreaks: Range in no. of cases <sup>#</sup>	Week 26 2021 – Week 7 2022	Number open	Open outbreaks: Range in no. of cases <sup>#</sup>
Centre for disabilities	26	1-9	378	206	1-28
Centre for older people	2	3-11	11	4	3-11
Children's / TUSLA residential centre	4	2-6	56	25	0-8
Mental health facility	1	<5	43	20	1-19
Women/children's refuge	0	n/a	6	3	2-4
Other	1	n/a*	20	9	0-14
Not Specified	0	n/a	5	3	<5
<b>Total</b>	<b>34</b>	<b>0-11</b>	<b>519</b>	<b>270</b>	<b>0-28</b>

<sup>#</sup>n/a is used where there were no outbreaks in a category or where there are no confirmed cases currently linked to any outbreak in that category (see technical note 6, Appendix 2). <sup>§</sup>Due to delays in linkage of outbreak cases as a result of the recent surge, an interim measure has been applied whereby the higher number between aggregate and outbreak linked confirmed case numbers is used. \*No cases associated with outbreak as yet.

<sup>1</sup> This section focuses on the following residential settings: Centres for disabilities, Centres for older people, Children's/TUSLA residential centres and mental health facilities. Homeless services, addiction services, direct provision centres and prisons are reported in the Focus on Vulnerable Populations section.



**Figure 5:** Number of COVID-19 outbreaks in residential institutions by type of residential institution in Ireland, from 27/06/2021 to midnight on 19/02/2022. *Data source: CIDR*

**Note: Data are provisional**

### Focus on COVID-19 Outbreaks associated with Other Healthcare Settings

There were **393** COVID-19 outbreaks associated with other healthcare settings, with **1,575** laboratory confirmed COVID-19 cases<sup>§</sup>, notified in Ireland since 01/03/2020.

This brief overview of COVID-19 outbreaks in other healthcare settings notified up to midnight on 19/02/2022 (Table 6). Since Week 26 2021 there have been **193** outbreaks associated with other healthcare services and **91** of these remain open.

**There were 11 new COVID-19 outbreaks reported in other healthcare settings in Week 7 2022: five in services for people with disabilities; three associated with clients of mental health facilities and; three in other healthcare services.**

**Table 6:** Number of COVID-19 outbreaks and laboratory confirmed cases<sup>§</sup> associated with other healthcare settings in Ireland, from 27/06/2021 to midnight on 19/02/2022. *Data source: CIDR*

Outbreak location	Number of outbreaks notified				
	Week 7	Week 7 outbreaks: Range in no. of cases <sup>#</sup>	Week 26 2021 – Week 7 2022	Number open	Open outbreaks: Range in no. of cases <sup>#</sup>
Clients of home care services	0	n/a	48	19	1-6
People with disabilities	5	2-12	84	46	1-15
Clients of mental health facilities	3	0-10	18	11	0-11
All other healthcare service	3	<5	43	15	1-5
<b>Total</b>	<b>11</b>	<b>0-12</b>	<b>193</b>	<b>91</b>	<b>0-15</b>

<sup>#</sup>n/a is used where there were no outbreaks in a category or where there are no confirmed cases currently linked to any outbreak in that category (see technical note 6, Appendix 2). <sup>§</sup>Due to delays in linkage of outbreak cases as a result of the recent surge, an interim measure has been applied whereby the higher number between aggregate and outbreak linked confirmed case numbers is used.

**Note: Data are provisional**

## Focus on COVID-19 Outbreaks associated Other Vulnerable Populations

There were **1,009** COVID-19 outbreaks associated with the below described vulnerable populations, with **9,758** laboratory confirmed COVID-19 cases<sup>5</sup>, notified in Ireland since 01/03/2020.

This brief overview of COVID-19 outbreaks in vulnerable populations/settings only includes outbreaks involving Irish Travellers, the Roma community, outbreaks in direct provision centres, facilities for the homeless/those with addiction issues and prisons notified up to midnight on 19/02/2022 (Table 7). From 27/06/2021 to 19/02/2022, there have been **408** outbreaks in vulnerable populations, of which **186** remain open.

### There were twelve new outbreaks reported in vulnerable populations during Week 7 2022:

- seven outbreaks associated with Irish Travellers
- two outbreaks associated with the Roma community
- one outbreak associated with prisons
- one outbreak associated with the homeless
- one outbreak associated with a persons with addictions

**Table 7:** Number of COVID-19 outbreaks and laboratory confirmed cases<sup>5</sup> in settings involving vulnerable populations, including the Irish Traveller community, Roma community, direct provision centres, facilities for the homeless/those with addiction issues and prisons notified from 27/06/2021 to midnight on 19/02/2022. *Data source: CIDR*

Vulnerable populations	Number of outbreaks notified				
	Week 7	Week 7 outbreaks: Range in no. of cases <sup>#</sup>	Week 26 2021 – Week 7 2022	Number open	Open outbreaks: Range in no. of cases <sup>#</sup>
Irish Travellers	7	2-8	267	123	0-83
Roma community	2	<5	36	13	0-9
Direct provision centres	0	n/a	42	13	2-51
Homeless <sup>¥</sup>	1	7	33	19	2-33
Persons with addictions	1	9	13	10	1-22
Prisons	1	37	17	8	3-156
<b>Total</b>	<b>12</b>	<b>0-37</b>	<b>408</b>	<b>186</b>	<b>0-156</b>

<sup>¥</sup>Homeless facilities include some facilities that provide long term supported accommodation. Also includes staff of homeless facilities. <sup>#</sup>n/a is used where there were no outbreaks in a category or where there are no confirmed cases currently linked to any outbreak in that category (see technical note 6, Appendix 2). <sup>5</sup>Due to delays in linkage of outbreak cases as a result of the recent surge, an interim measure has been applied whereby the higher number between aggregate and outbreak linked confirmed case numbers is used.

**Note: Data are provisional**



### Focus on COVID-19 Outbreaks associated with school children (+/- staff), universities/colleges and childcare facilities

There were **1,360** COVID-19 outbreaks in schools, with **7,112** laboratory confirmed COVID-19 cases<sup>§</sup>; **224** outbreaks in universities colleges/third-level students, with **2,506** laboratory confirmed COVID-19 cases<sup>§</sup>; **649** outbreaks in childcare facilities, with **3,466** laboratory confirmed COVID-19 cases<sup>§</sup>, notified in Ireland since 01/03/2020.

In total, **851** COVID-19 outbreaks associated with school children (+/- staff), universities/colleges/third level students and childcare facilities have been notified from 27/06/2021 up to midnight on 19/02/2022 (Table 8) and **186** of these outbreaks remain open.

**During Week 7 2022, there were 12 COVID-19 outbreaks notified associated with school children +/- staff and one associated with a childcare facility.**

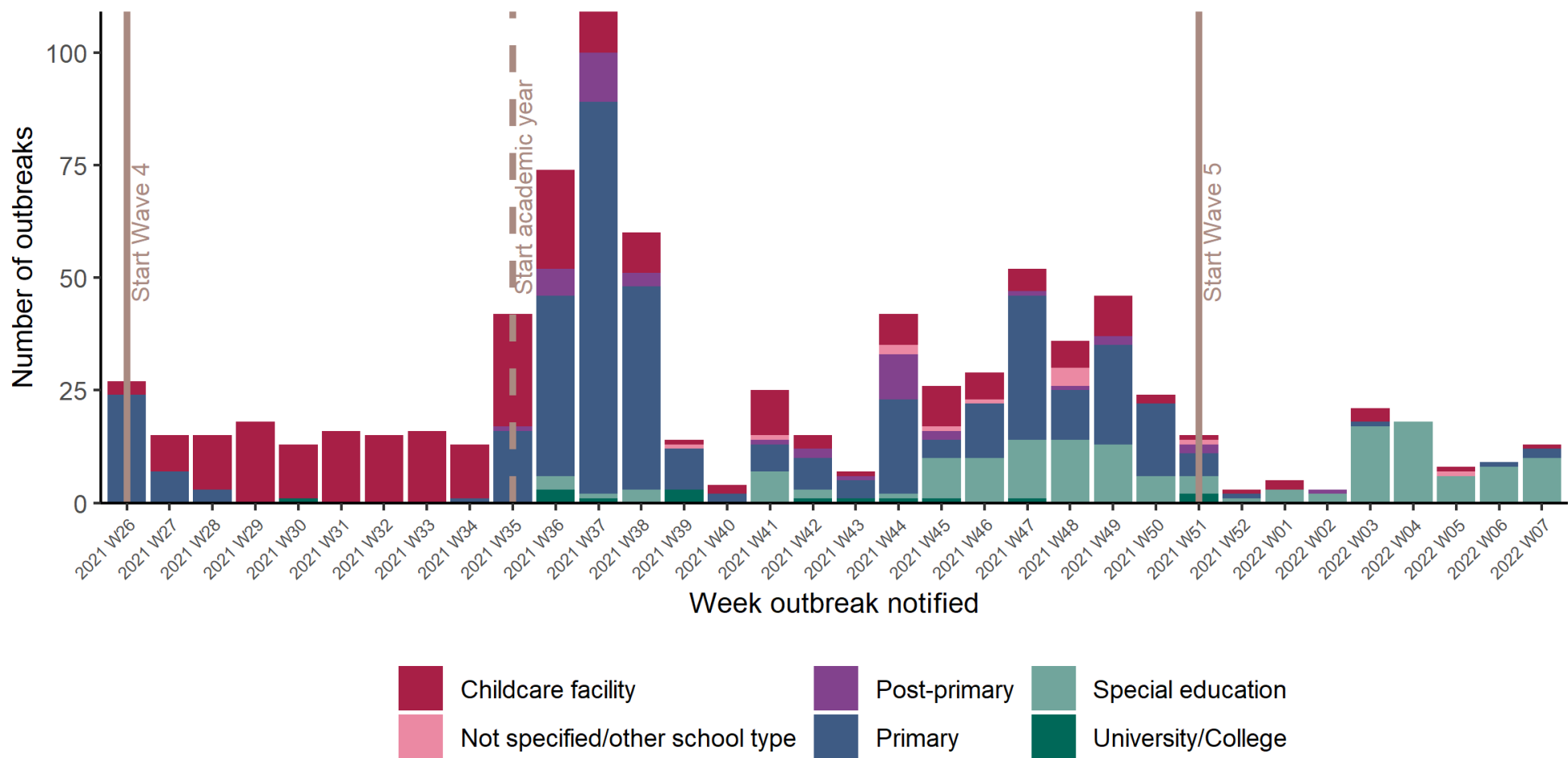
**Table 8:** Number of COVID-19 outbreaks and laboratory confirmed cases<sup>§</sup> associated with school children (+/- staff), universities/colleges/third level students and childcare facilities notified to midnight on 19/02/2022. *Data source: CIDR*

Outbreak location	Number of outbreaks notified				
	Week 7	Week 7 outbreaks: Range in no. of cases <sup>#</sup>	Week 26 2021 – Week 7 2022	Number open	Open outbreaks: Range in no. of cases <sup>#</sup>
Primary	2	5-8	377	57	0-18
Post-primary	0	n/a	44	15	0-70
Special education	10	0-20	150	77	0-20
Not specified/other	0	n/a	10	5	0-10
<b>Total School***</b>	<b>12</b>	<b>0-20</b>	<b>581</b>	<b>154</b>	<b>0-70</b>
Childcare facility	1	n/a†	252	26	0-13
University/college/third level students**	0	n/a	18	6	2-7
<b>Total</b>	<b>13</b>	<b>0-20</b>	<b>851</b>	<b>186</b>	<b>0-70</b>

\*These outbreaks are outbreaks associated with school children +/- school staff. Transmission of COVID-19 within the school has not necessarily been established in these outbreaks.

\*\*These outbreaks also include outbreaks among third level students that may have occurred in other locations, such as private houses or social gatherings, and may not be directly linked to a University/college location. #n/a is used where there were no outbreaks in a category or where there are no confirmed cases currently linked to any outbreak in that category (see technical note 6, Appendix 2). \*\*\*In Week 44 2021, 32 outbreaks associated with schools that occurred during May and June 2021 (2020/21 academic year) were retrospectively notified. Please note not all school outbreaks require public health prioritization and therefore may not be reported to CIDR. §Due to delays in linkage of outbreak cases as a result of the recent surge, an interim measure has been applied whereby the higher number between aggregate and outbreak linked confirmed case numbers is used. †No cases associated with outbreak as yet.

**Note: Data are provisional**



**Figure 6:** Number of COVID-19 outbreaks by educational setting, from 27/06/2021 to midnight on 19/02/2022. *Data source: CIDR*

**Note: Data are provisional**

### Focus on COVID-19 Outbreaks associated with Workplaces

There were **1,262** COVID-19 outbreaks in workplaces, with **10,140** laboratory confirmed COVID-19 cases<sup>§</sup>. This included **144** outbreaks in meat/poultry production and processing facilities, with **4,001** laboratory confirmed COVID-19 cases<sup>§</sup> and **162** outbreaks in other food/beverage production and processing facilities, with **1,556** laboratory confirmed COVID-19 cases<sup>§</sup>, notified in Ireland since 01/03/2020.

In total, **470** COVID-19 outbreaks associated with workplaces have been notified from 27/06/2021 up to midnight on 19/02/2022 (Table 9) and **40** of these outbreaks remain open.

**During Week 7 2022, there were two COVID-19 outbreaks notified associated with non-specified workplace settings.**

**Table 9:** Number of COVID-19 outbreaks and laboratory confirmed cases<sup>§</sup> associated with workplaces notified to midnight on 19/02/2022. *Data source: CIDR*

Workplace outbreaks	Number of outbreaks notified				
	Week 7	Week 7 outbreaks: Range in no. of cases <sup>#</sup>	Week 26 2021 – Week 7 2022	Number open	Open outbreaks: Range in no. of cases <sup>#</sup>
Meat/poultry production and processing	0	n/a	35	3	2-240
Other food/beverage production and processing	0	n/a	65	4	1-44
Other workplaces	2	<5	370	33	0-41
<b>Total</b>	<b>2</b>	<b>0-2</b>	<b>470</b>	<b>40</b>	<b>0-240</b>

<sup>#</sup>n/a is used where there were no outbreaks in a category or where there are no confirmed cases currently linked to any outbreak in that category (see technical note 6, Appendix 2). Outbreaks in settings in grey may be underestimated due to public health focus on key settings at present. <sup>§</sup>Due to delays in linkage of outbreak cases as a result of the recent surge, an interim measure has been applied whereby the higher number between aggregate and outbreak linked confirmed case numbers is used.

**Note: Data are provisional**

## Appendices

### Appendix 1

**Table A:** Number of COVID-19 outbreaks notified in Ireland by outbreak location and closure status, to midnight 19/02/2022, N=22,402. *Data source: CIDR*

Outbreak Location	Outbreak closure status (all outbreak classifications)		
	Closed	Open	Total
Hospital	642	139	<b>781</b>
Nursing home	772	285	<b>1057</b>
Community Hospital/Long-stay unit	90	23	<b>113</b>
Residential institution	917	319	<b>1236</b>
Other healthcare service	302	91	<b>393</b>
School**	1206	154	<b>1360</b>
Childcare facility	623	26	<b>649</b>
University/college***	62	4	<b>66</b>
Workplace	1222	40	<b>1262</b>
Retail outlet	380	8	<b>388</b>
Hotel	107	4	<b>111</b>
Guest house/ B&B	13	1	<b>14</b>
Public house	111	6	<b>117</b>
Restaurant / Cafe	217	5	<b>222</b>
Travel related	254	21	<b>275</b>
Transport	62	4	<b>66</b>
Private house*	6500	5672	<b>12172</b>
Extended family	750	180	<b>930</b>
Community outbreak	518	7	<b>525</b>
Social gathering	262	24	<b>286</b>
Religious/Other ceremony	127	15	<b>142</b>
Sporting activities/fitness	93	2	<b>95</b>
Other recreation activity	26	0	<b>26</b>
Personal grooming service	48	0	<b>48</b>
Other	54	5	<b>59</b>
Unknown	5	0	<b>5</b>
Not specified	4	0	<b>4</b>
<b>Total</b>	<b>15367</b>	<b>7035</b>	<b>22402</b>

\*It is common practice not to close private house outbreaks on CIDR due to the large volume of these types of outbreaks on CIDR

\*\*These outbreaks are outbreaks associated with school children +/- or school staff. Transmission of COVID-19 within the school has not necessarily been established in these outbreaks.

\*\*\*These outbreaks are associated with a university/college location and do not include outbreaks among third level students that occurred at other locations

## Appendix 2 Technical Notes

1. Data are based on statutory notifications and were extracted from the National Computerised Infectious Disease Reporting (CIDR) system. Data are provisional and subject to ongoing review, validation and update. As a result, figures in this report may differ from previously published figures.
2. For surveillance purposes, the following COVID-19 outbreak definition is used for notifying COVID-19 outbreaks/clusters:

### Confirmed\*

- **There is a cluster/outbreak, with two or more cases of laboratory confirmed COVID-19 infection regardless of symptom status. This includes cases with symptoms and cases who are asymptomatic.**
- OR**
- **There is a cluster/outbreak, with two or more cases of illness with symptoms consistent with COVID-19 infection (as per the COVID-19 case definition), and at least one person is a confirmed case of COVID-19.**

\*From September 21<sup>st</sup> 2020, suspected COVID outbreaks should be reported with the disease category 'Acute Respiratory Infection (ARI)'. If one or more cases linked to the outbreak are subsequently confirmed as COVID-19, the ARI outbreak should be reclassified to being a COVID-19 outbreak. Outbreaks of suspected COVID-19 which were notified before September 21<sup>st</sup> 2020, and met the previous COVID-19 outbreak definition should remain as COVID-19 outbreaks on CIDR.

The COVID-19 case definition is detailed on the Health Protection Surveillance Centre (HPSC) website: <https://www.hpsc.ie/a-z/respiratory/coronavirus/novelcoronavirus/casedefinitions/>

3. This report includes confirmed and suspected COVID-19 outbreaks.
4. An "Open" or "Closed" outbreak is defined as an outbreak where the outbreak status is "Open" or "Closed" on CIDR. In order to declare an outbreak "Closed" the outbreak location should not have experienced any new cases of infection which meet the case definition for a period of 28 days (two incubation periods).
5. Outbreak type (family/general) indicates whether an outbreak is confined to a family (family outbreak) or affects members of more than one household (general outbreak).
6. The "range in number of cases" presented in Tables 3 to 9 is based on laboratory confirmed cases linked to an outbreak in CIDR. The priority is to notify outbreaks to CIDR in a timely fashion and, while every effort is made to link cases to outbreaks as quickly as possible, there can sometimes be a delay in linking cases to the outbreak. Ranges in number of cases that include "0" include outbreaks that currently have no linked cases. Data in CIDR are continuously reviewed and updated and this includes the identification and linking of outbreak-associated cases.
  - a. *Due to the surge in case numbers, the processing time of case notifications on CIDR increased. Outbreak cases may not yet be processed and linked to their outbreak on CIDR. Due to these delays, an interim measure has been applied whereby the higher number between aggregate and outbreak linked confirmed case numbers is used in outbreak settings.*