



Epidemiology of COVID-19 Outbreaks/Clusters in Ireland

Weekly Report

Prepared by HPSC on 15th March 2021

Week 10 2021 (week ending 13th March 2021)

Note: Data are provisional

This report includes data extracted from CIDR on 15th March 2021 at 08:30am and includes COVID-19 outbreaks notified on CIDR up to midnight 13/03/2021.

Total Number of COVID-19 outbreaks notified since week 10 2020:	13,416
Number of COVID-19 outbreaks notified from week 48:	4,384
Number of COVID-19 outbreaks notified since week 48 OPEN:	2,649
Number of COVID-19 outbreaks notified since week 48 CLOSED:	1,735
Number of COVID-19 outbreaks notified in week 10 2021:	339

Waves (weeks)	Dates
Wave 1 (weeks 10 -31 2020)	01/03/2020 – 01/08/2020
Wave 2 (week 32-47 2020)	02/08/2020 – 21/11/2020
Wave 3 (week 48 2020 onwards)	22/11/2020 onwards

The COVID-19 outbreak definition is available in appendix 3 of this report and on the HPSC website at: <https://www.hpsc.ie/a-z/respiratory/coronavirus/novelcoronavirus/casedefinitions/covid-19outbreakcasedefinitionforireland/>

Please note COVID-19 outbreaks and cases are continuously validated/updated on Ireland’s national Computerised Infectious Disease Reporting System (CIDR).

Sincere thanks are extended to all those who are participating in the collection of data and reporting of data used in these reports. This includes the HSE COVID-19 Contact Management Programme (CMP), staff in ICU units, notifying clinicians, laboratory staff, public health doctors, nurses, surveillance scientists, microbiologists and administrative staff.

Note: Data are provisional

Summary (week 48 2020 to week 10 2021)

4,384 outbreaks have been reported from week 48 2020 onwards (week beginning 22/11/2020; third wave of COVID-19 infection in Ireland) and key outbreak locations are as follows:

- 2,261 (52%) were in private houses*
- 209 (4.8%) were reported in hospitals
- 229 (5.2%) were reported in nursing homes
- 22 (0.5%) were reported in community hospital/long-stay units
- 292 (6.7%) were reported in residential institutions
- 1,371 (31%) were reported in a range of other settings, including workplaces (n=318; 7.3%), travel/transport related settings (n=34; 0.8%), retail outlet (n=72; 1.6%) and restaurant/café (n=34; 0.8%). See Table 1 for further details.

1,735 outbreaks have been closed and 2,649 outbreaks are open (See Appendix 1, Table A for breakdown of outbreaks by location and outbreak status. Note that it is common practice not to close private house outbreaks on CIDR due to the large volume of outbreaks in this category.)

13,416 COVID-19 outbreaks have been reported in Ireland since week 10, 2020 (Figure 1).

Summary (week 10, 2021)

In **week 10 2021**, there were **339** COVID-19 outbreaks notified:

- The overall number of outbreaks notified in week 10 decreased by 89 compared to week 9
- There were 12 new acute hospital outbreaks notified
- There were three nursing home outbreaks notified
- There were 12 residential institution outbreaks notified
- Eight outbreaks associated with childcare facilities were notified
- There were eight new outbreaks associated with school children +/- school staff notified
- One new outbreak was linked to third level students/University college
- There were 14 workplace outbreaks notified and locations are summarised in the workplaces section of this report
- The remaining 281 outbreaks included private houses* (n=215, excluding third-level student outbreaks), extended family (n=31), restaurant/café (n=6), other healthcare services (n=10), social gathering (n=2), travel/transport related (n=1), retail (n=4), religious/other ceremony (n=2), community outbreaks (n=5, excluding third-level student outbreaks) and five in an unknown/other location

Late notifications of outbreaks

In **week 10 2021**, 95 outbreaks were late notifications from October (n=1), November (n=3), December (n=22) and January (n=69) (See Appendix 2, Table B for breakdown of these outbreaks by month).

*Public Health are prioritising the reporting of outbreaks in key settings e.g. RCFs, hospitals. Therefore, the number of private house outbreaks is underestimated.

Note: Data are provisional

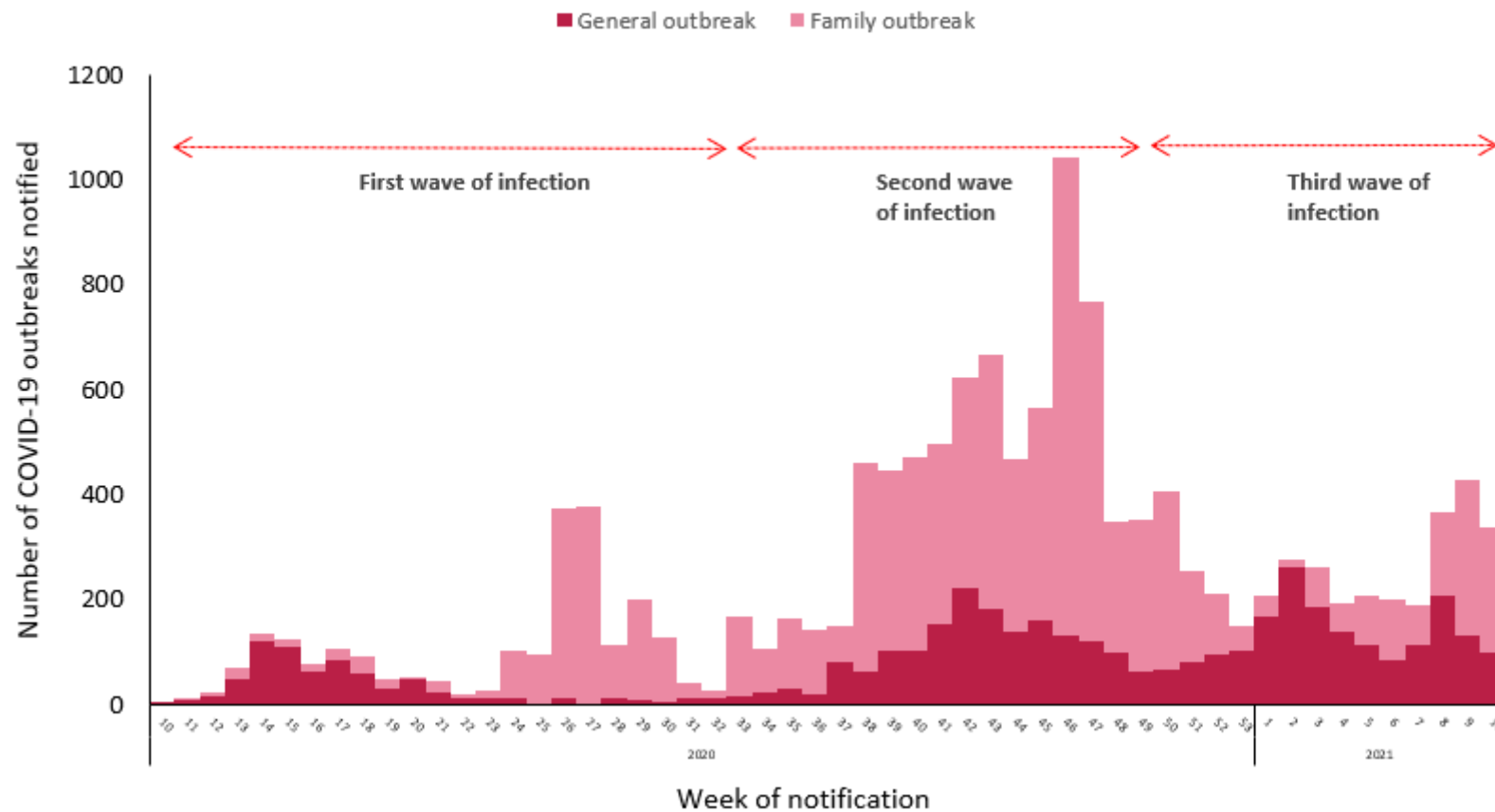


Figure 1: Epi-curve of COVID-19 outbreaks in all settings notified in Ireland by week of notification and outbreak type (see technical note 5, Appendix 3) to midnight on 13/03/2021, N=13,416. *Data source: CIDR*

Dashed red arrows indicate the timeline of the first, second and third waves of COVID-19 infection in Ireland (Second wave of infection commenced in week 32; week beginning 02/08/2020 and the third wave commenced in week 48 (22/11/2020)).

Note: Family outbreaks reported in July 2020 were composed largely of late notified outbreaks from the period March to May 2020.

Note: Data are provisional

Table 1: Number of COVID-19 outbreaks notified in Ireland by outbreak location and by week of notification from 22/11/2020 to midnight on 13/03/2021, and difference in number of outbreaks notified in week 10 2021 compared to the previous week, N=4,384. *Data source: CIDR*

Outbreak location	Week of Outbreak Notification									Difference in number of outbreaks notified since last week	Total (week 48 2020 to week 10 2021)
	Week 48 2020 to week 2 2021	2021									
		3	4	5	6	7	8	9	10		
Hospital	112	19	13	15	11	4	18	5	12	+7	209
Nursing home	146	26	23	11	5	7	6	2	3	+1	229
Community Hospital / Long-stay unit	11	4	1	0	1	5	0	0	0	0	22
Residential institution	145	33	30	20	13	11	19	9	12	+3	292
Community outbreak	31	2	3	3	4	0	27	4	5	+1	79
Other healthcare services	48	16	8	10	3	6	7	10	10	0	118
Hotel	4	0	0	0	0	0	0	0	0	0	4
Restaurant / Cafe	21	0	0	2	0	2	3	0	6	+6	34
Public house	8	0	0	1	1	0	0	0	0	0	10
Social gathering	10	0	0	2	0	2	6	9	2	-7	31
Retail outlet	28	2	6	4	7	10	5	6	4	-2	72
Workplace	114	36	24	26	21	29	36	18	14	-4	318
Travel related	9	0	6	0	3	3	1	3	1	-2	26
Transport	4	0	0	0	0	0	1	3	0	-3	8
Private house: family outbreaks	1169	65	33	68	89	54	129	256	205	-51	2068
Private house: general outbreaks	66	2	0	4	6	7	50	48	10	-38	193
Extended family	90	14	23	27	24	32	34	37	31	-6	312
Childcare Facility	49	27	14	12	5	9	15	10	8	-2	149
School*	106	8	1	1	0	0	3	0	8	+8	127
University/College**	6	0	2	1	0	1	4	1	1	0	16
Religious/Other ceremony	12	3	2	1	3	6	0	4	2	-2	33
Sporting activity/fitness	1	0	0	0	0	0	0	0	0	0	1
Personal grooming service	2	0	0	0	0	0	0	0	0	0	2
Other	11	3	3	0	3	2	1	3	5	+2	31
Total	2203	260	192	208	199	190[^]	365^{^^}	428^{^^^}	339^{^^^^}	-89	4384

*These outbreaks are outbreaks associated with school children +/- school staff. Transmission of COVID-19 within the school has not necessarily been established in these outbreaks. **These outbreaks are associated with a university/college location and do not include outbreaks among third level students that occurred at other locations. ***Contains outbreaks for weeks in 2020 (48-53) and 2021 (weeks 1-10). [^]Includes late outbreak notifications from December 2020 (n=1), January (n=3) and February (n=1) 2021 ^{^^}Includes 99 late notifications from November, December and January. ^{^^^}Includes 141 late notifications from October, December and January ^{^^^^}Includes 95 late notifications from October, November, December and January (see Appendix 2, Table B for breakdown).

Note: Data are provisional

COVID-19 Outbreaks/Clusters in Residential Facilities and Hospital settings in Ireland

A summary of outbreaks linked to nursing homes, acute hospitals, community hospital/long-stay units, and other residential institutions is shown in Figure 2 (A-D), in the subsequent “Focus” sections and Tables 2-5.

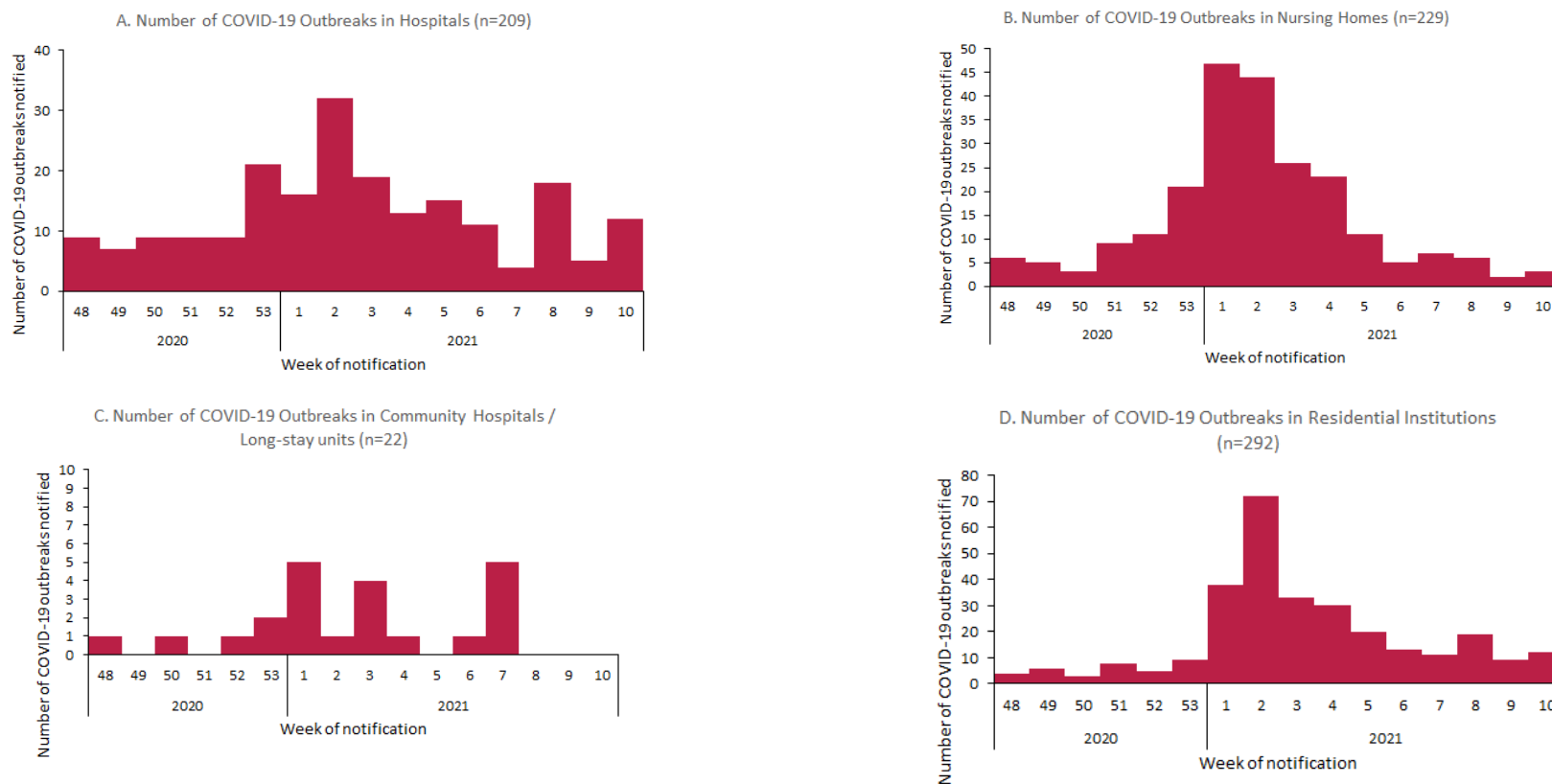


Figure 2 A-D: Epi-curve of COVID-19 outbreaks in (A) Acute Hospitals[^], (B) Nursing Homes^{^^}, (C) Community Hospitals/Long-stay units[^] and (D) Residential institutions^{^^} notified in Ireland by week of notification, from 22/11/2020 to midnight on 13/03/2021. [^]Week 7 includes late outbreak notifications from December 2020, January and February 2021. ^{^^}Week 8 includes late notifications from November and December 2020 and January 2021 (Hospitals=11, Nursing home=1, Residential Institutions=7). *Week 9 includes late notifications from January 2021 (Nursing home=1, Residential Institutions=2). #Week 10 includes late notifications from December 2020 and January 2021 (Hospital=5 and Residential Institution =4) Data source: CIDR

Note: Data are provisional

Focus on Nursing Homes and Community Hospitals

There have been **631** outbreaks in nursing homes and community hospital/long stay units, with **15,861** linked laboratory confirmed COVID-19 cases, notified in Ireland since 01/03/2020.

From 22/11/2020 to 13/03/2021, **251** outbreaks in nursing homes or community hospital/long-stay units have been notified and **110** of these outbreaks remain open. A total of **7,912 laboratory confirmed cases** linked with outbreaks in nursing homes or community hospital/long-stay units have been notified. Of those cases, 522 were hospitalised, eleven were admitted to ICU, and 921 laboratory confirmed cases linked to outbreaks in these settings died (Table 2).

Cases were reported to be a healthcare worker (HCW) in 3,320 cases, not a HCW in 3,976 cases and HCW status was unknown for the remaining cases (Figure 3).

There were three new outbreaks reported in nursing homes and no new outbreaks in community hospital/long-stay units during week 10 2021.

Table 2: Number of COVID-19 outbreaks and cases[‡] in nursing homes and community hospital/long-stay units in Ireland, from 22/11/2020 to midnight on 13/03/2021. *Data source: CIDR*

Outbreak location	Number of outbreaks notified					Laboratory confirmed cases [‡] linked to outbreaks (week 48-10)*				
	Week 10	Week 10 outbreaks: Range in no. of cases [#]	Week 48-10*	Number open	Open outbreaks: Range in no. of cases [#]	Cases notified in week 10	Total cases	Total hospitalised cases	Total ICU cases	Total number of deaths
Nursing home	3	0-5	229	92	0-127	<5	7299	429	9	883
Community Hospital/Long-stay unit	0	n/a	22	18	4-91	<5	613	93	<5	38
Total	3	0-5	251	110	0-127	<5	7912	522	11	921

[‡]Case numbers fewer than 5 are not presented here.

[#]n/a is used where there were no outbreaks in a category or where there are no confirmed cases currently linked to any outbreak in that category (see technical note 6, Appendix 3).

*Contains data from weeks in 2020 (48-53) and 2021 (weeks 1-10).

Note: Data are provisional and confidential

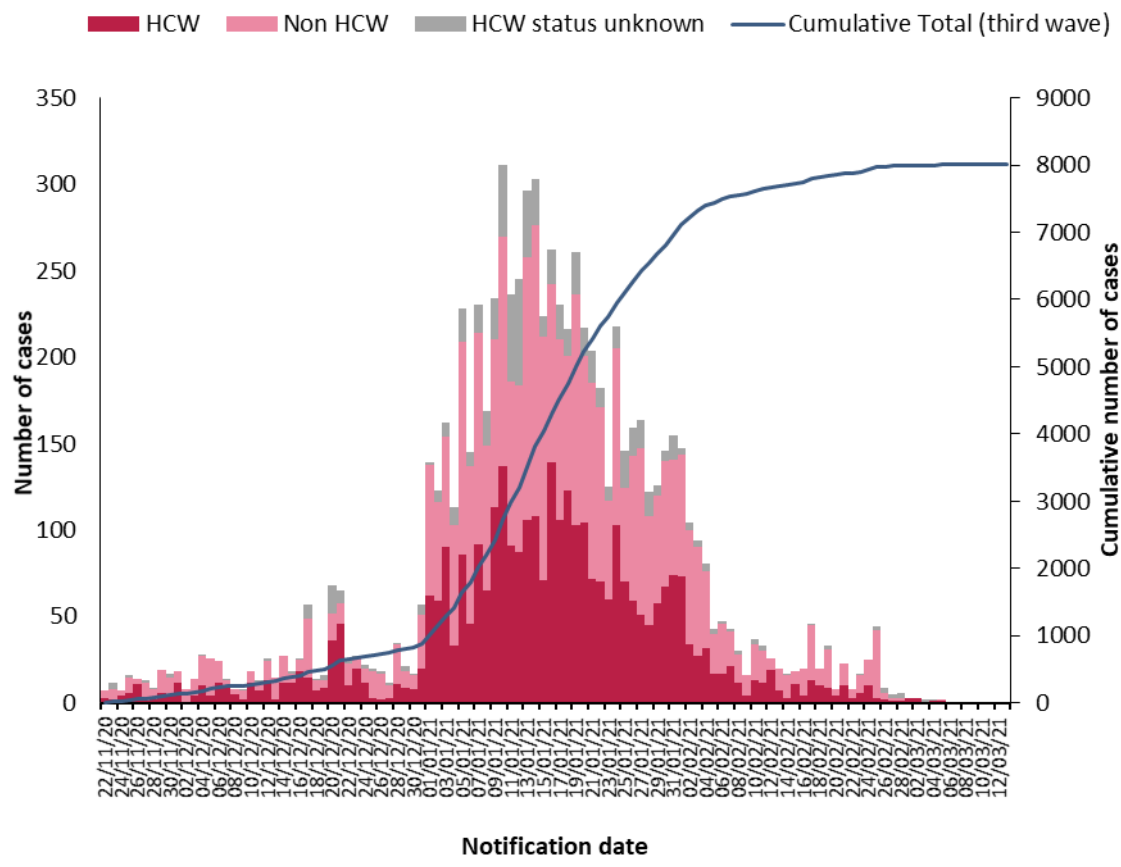


Figure 3: Epi-curve of confirmed COVID-19 cases linked to outbreaks in nursing homes and community hospital/long-stay units by healthcare worker (HCW) status and by date of notification, and cumulative number of confirmed cases during the third wave of infection by date of notification, from 22/11/2020 to midnight 13/03/2021. *Data source: CIDR*

Note: Data are provisional

Focus on Acute Hospitals

There were **387** outbreaks in acute hospitals, with **4,961** linked laboratory confirmed COVID-19 cases, notified in Ireland since 01/03/2020.

From 22/11/2020 to 13/03/2021, **209** outbreaks in acute hospitals have been notified and 86 of these outbreaks remain open. A total of **2,515 laboratory confirmed cases** linked with outbreaks in acute hospitals have been notified. Of those, 65 were admitted to ICU and 354 died (Table 3). Cases were reported to be a healthcare worker (HCW) in 988 cases, not a HCW in 1,376 cases and HCW status was unknown for the remaining cases (Figure 4).

There were 12 new outbreaks reported in acute hospitals during week 10 2021, five of which were late notifications (December 2020=2 and January 2021=3):

Table 3: Number of COVID-19 outbreaks and cases[‡] in acute hospital settings in Ireland, from 22/11/2020 to midnight on 13/03/2021. *Data source: CIDR*

Acute Hospitals	Number of outbreaks notified					Laboratory confirmed cases linked to outbreaks (week 48-10)*			
	Week 10	Week 10 outbreaks: Range in no. of cases	Week 48-10*	Number open	Open outbreaks: Range in no. of cases	Cases notified in week 10	Total cases	Total ICU cases	Total number of deaths
	12	0-16	209	86	0-155	12	2515	65	354

‡Case numbers fewer than 5 are not presented here. *Contains data from weeks in 2020 (48-53) and 2021 (weeks 1-10) **Not all cases are linked to outbreaks as of yet

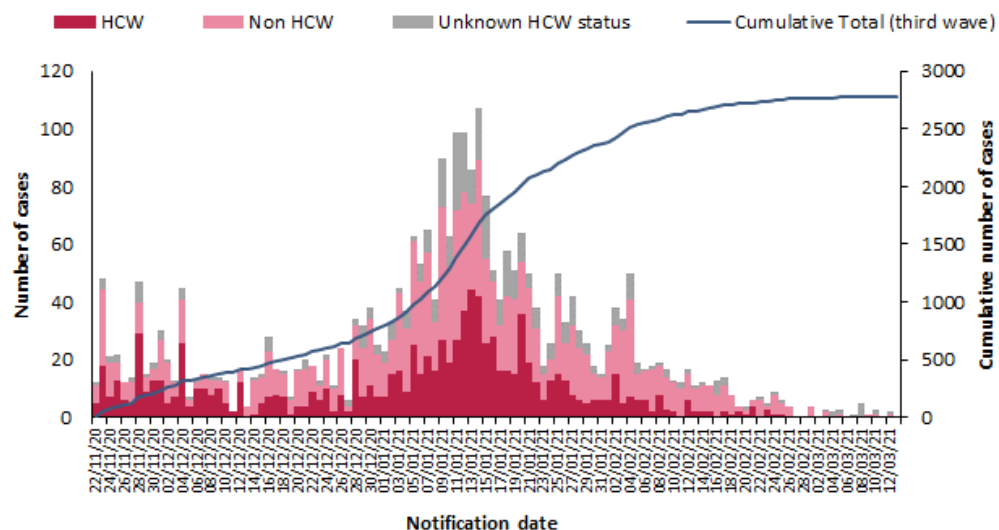


Figure 4: Epi-curve of confirmed COVID-19 cases linked to outbreaks in acute hospitals by healthcare worker (HCW) status and by date of notification, and cumulative number of confirmed cases during the third wave of infection by date of notification, from 22/11/2020 to 13/03/2021. *Data source: CIDR*

Note: Data are provisional

Focus on Residential Institutions (see footnote¹)

There were **442** outbreaks in residential institutions, with **3,024** linked laboratory confirmed COVID-19 cases, notified in Ireland since 01/03/2020.

From 22/11/2020 to 13/03/2021, **219** outbreaks in residential institutions have been notified and 97 of these outbreaks remain open. There were **1,733 laboratory confirmed cases** linked with outbreaks in residential institutions. Of those, 65 cases linked to outbreaks in residential facilities were hospitalised, three were admitted to ICU and 40 cases died (Table 4). The majority of residential institution outbreaks were notified in centres for disabilities, with **161** outbreaks and 1,245 linked cases notified since week 48.

There were five new outbreaks reported in residential institutions during week 10 2021

Table 4: Number of COVID-19 outbreaks and cases[‡] in residential institutions in Ireland, from 22/11/2020 to midnight on 13/03/2021. *Data source: CIDR*

Outbreak location	Number of outbreaks notified					Laboratory confirmed cases linked to outbreaks (week 48-10)*				
	Week 10	Week 10 outbreaks: Range in no. of cases [#]	Week 48-10*	Number open	Open outbreaks: Range in no. of cases [#]	Cases notified in week 10	Total cases	Total hospitalised cases	Total ICU cases	Total number of deaths
Centre for disabilities	1 [^]	7	161	71	0-42	<5	1245	45	<5	19
Centre for older people	0	n/a	14	7	1-44	<5	177	<5	<5	7
Children's / TUSLA residential centre	2	5-10	17	8	0-10	15	72	<5	<5	<5
Mental health facility	0	n/a	18	5	0-3	<5	116	13	<5	<5
Other	1	7	7	4	7-49	<5	111	<5	<5	13
Not Specified	1	5	2	2	0-7	<5	12	<5	<5	<5
Total	5	0-10	219	97	0-49	20	1733	65	<5	40

#n/a is used where there were no outbreaks in a category or where there are no confirmed cases currently linked to any outbreak in that category (see technical note 6, Appendix 3). †Case numbers fewer than 5 are not presented here. *Contains data from weeks in 2020 (48-53) and 2021 (weeks 1-10). **Not all cases are linked to outbreaks as of yet. ^A late outbreak notification from January 2021.

¹ This section focuses on the following residential settings: Centres for disabilities, Centres for older people, Children's/TUSLA residential centres and mental health facilities. Homeless services, addiction services, direct provision centres and prisons are reported in the Focus on Vulnerable Populations section.

Note: Data are provisional

COVID-19 Outbreaks in Other Vulnerable Populations

This brief overview of COVID-19 outbreaks in vulnerable populations/settings only includes outbreaks involving the Roma community, Irish Traveller community, outbreaks in Direct Provision Centres, facilities for the homeless/those with addiction issues and prisons notified up to midnight on 13/03/2021 (Table 5).

There were 22 new outbreaks reported in vulnerable populations during week 10 2021:

- Fifteen outbreaks among Irish Travellers
- Five outbreaks in the homeless population
- One outbreak in a direct provision centre
- One outbreak in people with addictions

Table 5: Number of COVID-19 outbreaks in settings involving vulnerable populations, including the Roma community, Irish Traveller community, outbreaks in Direct Provision Centres, facilities for the homeless/those with addiction issues and prisons notified from week 48 (week commencing 22/11/2020) to midnight on 13/03/2021 and laboratory confirmed cases[†] linked to these outbreaks. *Data source: CIDR*

Vulnerable populations	Number of outbreaks notified					Laboratory confirmed cases linked to outbreaks (week 48-10)**				
	Week 10	Week 10 outbreaks: Range in no. of cases [#]	Week 48-10**	Number open	Open outbreaks: Range in no. of cases [#]	Cases notified in week 10	Total cases	Total hospitalised cases	Total ICU cases	Total number of deaths*
Roma community	0	n/a	7	3	2-11	<5	49	8	<5	<5
Irish Travellers [^]	15	2-22	202	136	0-130	103	2591	110	14	6
Direct provision centres	1	3	35	8	1-26	5	313	<5	<5	<5
Homeless [^]	5	0-7	22	8	1-28	8	134	<5	<5	<5
People with addictions	1	2	10	1	2	<5	60	<5	<5	<5
Prisons	0	n/a	5	2	9-29	<5	101	<5	<5	<5
Total	22	0-22	281	158	0-130	117	3248	126	16	7

‡Case numbers fewer than 5 are not presented here. [^] Homeless facilities include some facilities that provide long term supported accommodation. Also includes staff of homeless facilities. #n/a is used where there were no outbreaks in a category or where there are no confirmed cases currently linked to any outbreak in that category (see technical note 6, Appendix 3). †Case numbers fewer than 5 are not presented here. **Contains data from weeks in 2020 (48-53) and 2021 (weeks 1-10). [^]Includes late outbreak notifications from November, December 2020 and January 2021 (Homeless=3, Irish Travellers=3).

Note: Data are provisional

COVID-19 Outbreaks in Workplaces

In total, **318** COVID-19 outbreaks in workplaces² have been notified from 22/11/2020 up to midnight on 13/03/2021. Since week 48, **71** COVID-19 outbreaks have been notified in businesses associated with the production or processing of food and beverages, of which **39** were in meat/poultry/fish plants in all HSE areas.

There were **14 COVID-19 workplace outbreaks notified during week 10 2021:**

- Ten outbreaks were associated with the commercial sector
- One outbreak occurred in food production workplace, in a meat-plant facility
- One outbreak related to manufacturing
- One office-based outbreak
- One outbreak specified as ‘other workplace’

Table 6: Number of COVID-19 workplace outbreaks notified from 22/11/2020 to midnight on 13/03/2021 and laboratory confirmed cases[‡] linked to workplace outbreaks. *Data source: CIDR*

Workplace outbreaks	Number of outbreaks notified					Laboratory confirmed cases linked to outbreaks (week 48-10) ^{***}				
	Week 10	Week 10 outbreaks: Range in no. of cases [#]	Weeks 48-10 ^{***}	Number open	Open outbreaks: Range in no. of cases [#]	Cases notified in week 10	Total cases	Total hospitalised cases	Total ICU cases	Total number of deaths [*]
Meat/poultry Production and Processing	1	32	39	27	0-132	32	990	6	<5	<5
Other food/beverage Production and Processing	0	n/a	32	18	0-102	<5	314	6	<5	<5
Construction industry ^{**}	0	n/a	29	17	2-22	<5	137	<5	<5	<5
Commercial [^]	10	2-4	80	39	1-54	7	450	8	<5	<5
Manufacturing [^]	1	2	50	24	1-49	6	345	7	<5	<5
Office-based [^]	1	4	31	8	2-12	<5	166	6	<5	<5
Defence/Justice/Emergency services	0	n/a	40	10	0-16	<5	214	<5	<5	<5
Other Workplace [^]	1	0-3	17	7	2-18	<5	74	<5	<5	<5
Total	14	0-32	318	150	0-132	52	2690	35	11	<5

[‡]Case numbers fewer than 5 are not presented here. ^{*}All COVID-19 cases that died and were linked to outbreaks in these settings have been laboratory confirmed. No deaths in probable/possible cases linked to outbreaks in these settings have been notified. ^{**}Cases linked to some construction site outbreaks may reside in Northern Ireland and consequently will be notified in that jurisdiction. These cases will not be included in the case numbers for Ireland. ^{***}Contains data from weeks in 2020 (48-53) and 2021 (weeks 1-10). [^]“Other workplace” includes businesses that do not fit in the above workplace categories. [#]n/a is used where there were no outbreaks in a category or where there are no confirmed cases currently linked to any outbreak in that category (see technical note 6, Appendix 3). [^]Includes late notifications from January 2021 (Commercial=5, Office=1, Manufacturing=1)

² Workplace outbreaks exclude the following workplaces: hospitals, residential facilities, hotels, public houses, retail outlets, and other settings (outbreaks in GP practices and outbreaks associated with home carers). These are reported under those headings.

Note: Data are provisional

COVID-19 Outbreaks associated with school children (+/- staff), universities/colleges and childcare facilities

In total, **374** COVID-19 outbreaks associated with school children (+/- staff), universities/colleges/third level students and childcare facilities have been notified from 21/11/2020 up to midnight on 13/03/2021 (Table 7).

During **week 10** 2021, there was **one** associated outbreak with University/college or third level students, **eight** COVID-19 outbreaks associated with childcare facilities and **eight** COVID-19 outbreaks associated with school children +/- staff

Table 7: Number of COVID-19 outbreaks associated with school children (+/- staff), universities/colleges/third level students and childcare facilities notified to midnight on 13/03/2021 and laboratory confirmed cases[†] linked to these outbreaks. *Data source: CIDR*

Outbreak location	Number of outbreaks notified					Laboratory confirmed cases linked to outbreaks (week 48-10) ^{##}				
	Week 10	Week 10 outbreaks: Range in no. of cases [#]	Week 48-10 ^{##}	Number open	Open outbreaks: Range in no. of cases [#]	Cases notified in week 10	Total cases	Total hospitalised cases	Total ICU cases ^{***}	Total number of deaths
School*	8	0-7	127	19	0-54	21	601	7	<5	<5
University/college/third level students**	1	1	98	86	1-169	<5	761	6	<5	<5
Childcare facility	8	0-8	149	52	0-21	31	855	5	<5	<5
Total	17	0-8	374	157	0-169	53	2217	18	<5	<5

†Case numbers fewer than 5 are not presented here. *These outbreaks are outbreaks associated with school children +/- or school staff. Transmission of COVID-19 within the school has not necessarily been established in these outbreaks. **These outbreaks also include outbreaks among third level students that may have occurred in other locations, such as private houses or social gatherings, and may not be directly linked to a University/college location #n/a is used where there were no outbreaks in a category or where there are no confirmed cases currently linked to any outbreak in that category (see technical note 6, Appendix 3) ##Contains data from weeks in 2020 (48-53) and 2021 (weeks 1-10). ^Not all cases are linked to outbreaks as of yet.

Note: Data are provisional

Appendices
Appendix 1

Table A: Number of COVID-19 outbreaks notified in Ireland by outbreak location and closure status, to midnight 13/03/2021, N=13,416. *Data source: CIDR*

Outbreak Location	Outbreak closure status (all outbreak classifications)		
	Closed	Open	Total
Hospital	299	88	387
Nursing home	484	93	577
Community Hospital/Long-stay unit	36	18	54
Residential institution	449	122	571
Other healthcare service	81	61	142
Private house*	3470	5632	9102
Workplace	438	151	589
Travel related	62	24	86
Transport	10	8	18
Extended family	248	256	504
Childcare facility	173	53	226
Community outbreak	128	148	276
Hotel	14	1	15
Guest house/ B&B	1	0	1
Public house	32	0	32
Restaurant / Cafe	67	14	81
Social gathering	60	21	81
Retail outlet	83	29	112
School**	306	21	327
University/college***	34	9	43
Religious/Other ceremony	23	30	53
Sporting activities/fitness	28	0	28
Other recreation activity	1	0	1
Personal grooming service	5	2	7
Other	76	20	96
Unknown	1	2	3
Not specified	2	2	4
Total	6611	6805	13416

*It is common practice not to close private house outbreaks on CIDR due to the large volume of these types of outbreaks on CIDR.

**These outbreaks are outbreaks associated with school children +/- school staff. Transmission of COVID-19 within the school has not necessarily been established in these outbreaks.

***These outbreaks are associated with a university/college location and do not include outbreaks among third level students that occurred at other locations.

Note: Data are provisional

Appendix 2

Table B: Number of COVID-19 outbreaks in Ireland notified in Week 10 2021, by outbreak location and month of occurrence of first case, data up to midnight 13/03/2021, N=339. *Data source: CIDR*

Outbreak location	2020			2021			Unknown	Total
	Oct	Nov	Dec	Jan	Feb	Mar		
Childcare facility					4	3	1	8
Community outbreak				1	1	3		5
Extended family		2	6	12	6	5		31
Hospital			2	3	2	4	1	12
Not Specified					1	1		2
Nursing home					1		2	3
Other						1		1
Other healthcare service			1	5	1	3		10
Private house	1	1	11	35	93	72	2	215
Religious/Other ceremony				1	1			2
Residential institution			1	3	3	4	1	12
Restaurant / Cafe				1	2	3		6
Retail outlet				1	2	1		4
School					1	6	1	8
Social gathering			1			1		2
Travel related					1			1
University/College					1			1
Unknown					2			2
Workplace				7	3	4		14
Total	1	3	22	69	125	111	8	339

Note: Data are provisional

Appendix 3 Technical Notes

1. Data are based on statutory notifications and were extracted from the National Computerised Infectious Disease Reporting (CIDR) system. Data are provisional and subject to ongoing review, validation and update. As a result, figures in this report may differ from previously published figures.

2. For surveillance purposes, the following COVID-19 outbreak definition is used for notifying COVID-19 outbreaks/clusters:

Confirmed*

- **There is a cluster/outbreak, with two or more cases of laboratory confirmed COVID-19 infection regardless of symptom status. This includes cases with symptoms and cases who are asymptomatic.**

OR

- **There is a cluster/outbreak, with two or more cases of illness with symptoms consistent with COVID-19 infection (as per the COVID-19 case definition), and at least one person is a confirmed case of COVID-19.**

* From September 21st 2020, suspected COVID outbreaks should be reported with the disease category 'Acute Respiratory Infection (ARI)'. If one or more cases linked to the outbreak are subsequently confirmed as COVID-19, the ARI outbreak should be reclassified to being a COVID-19 outbreak. Outbreaks of suspected COVID-19 which were notified before September 21st 2020, and met the previous COVID-19 outbreak definition should remain as COVID-19 outbreaks on CIDR.

The COVID-19 case definition is detailed on the Health Protection Surveillance Centre (HPSC) website: <https://www.hpsc.ie/a-z/respiratory/coronavirus/novelcoronavirus/casedefinitions/>

3. This report includes confirmed and suspected COVID-19 outbreaks.

4. An "Open" or "Closed" outbreak is defined as an outbreak where the outbreak status is "Open" or "Closed" on CIDR. In order to declare an outbreak "Closed" the outbreak location should not have experienced any new cases of infection which meet the case definition for a period of 28 days (two incubation periods).

5. Outbreak type (family/general) indicates whether an outbreak is confined to a family (family outbreak) or affects members of more than one household (general outbreak).

6. The "range in number of cases" presented in Tables 2 to 7 is based on laboratory confirmed cases linked to an outbreak in CIDR. The priority is to notify outbreaks to CIDR in a timely fashion and, while every effort is made to link cases to outbreaks as quickly as possible, there can sometimes be a delay in linking cases to the outbreak. Ranges in number of cases that include "0" include outbreaks that currently have no linked cases. Data in CIDR are continuously reviewed and updated and this includes the identification and linking of outbreak-associated cases.

Note: Data are provisional