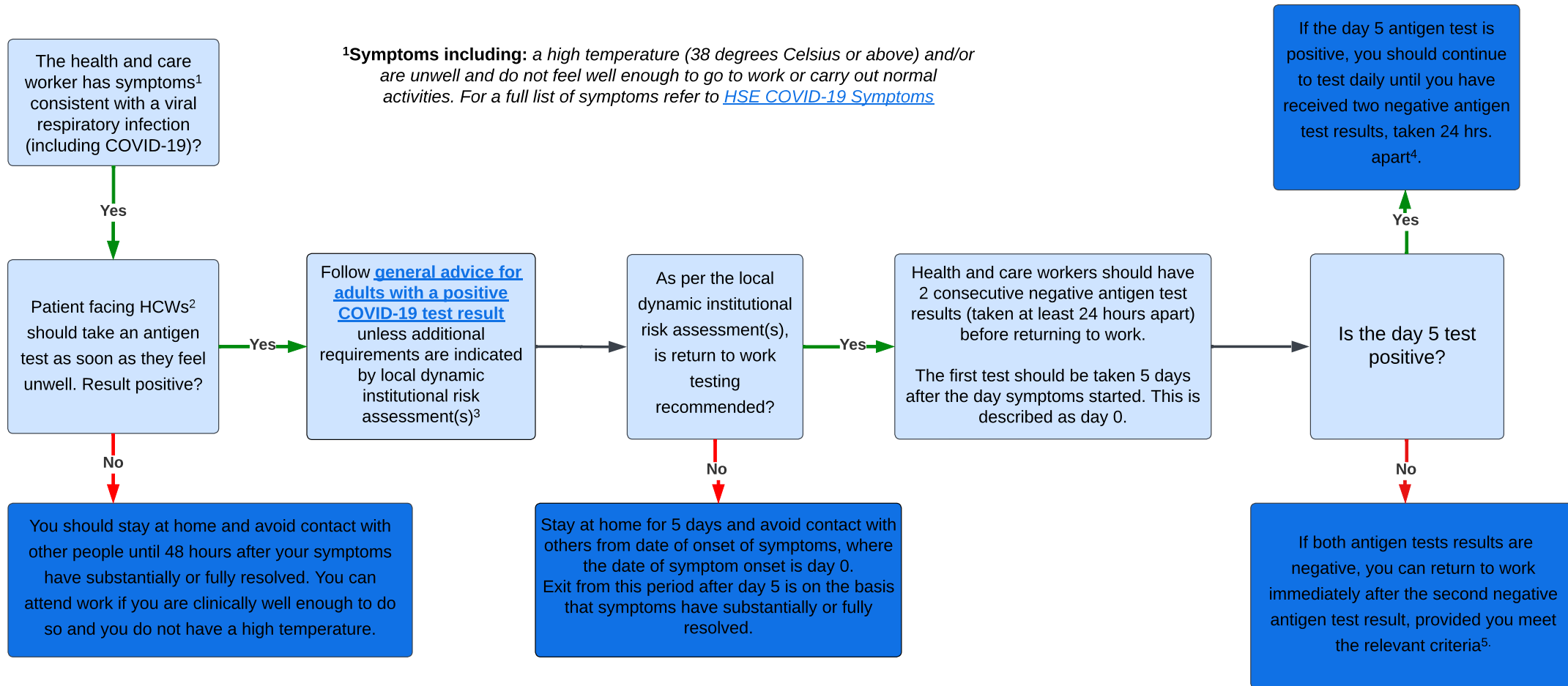


# Public Health Advice for Health and Care Workers for the Management of COVID-19 Cases and Contacts

This should be read in conjunction with [Public health advice for the management of COVID-19 cases and contacts V1.2 18/04/2023](#)

<sup>1</sup>**Symptoms including:** a high temperature (38 degrees Celsius or above) and/or are unwell and do not feel well enough to go to work or carry out normal activities. For a full list of symptoms refer to [HSE COVID-19 Symptoms](#)



<sup>2</sup>This includes but is not limited to people providing care in community care settings, care homes, hospices, disability services, older persons services, acute and non-acute hospitals, community hospitals, mental health services, palliative care services, primary care clinics, home care, paramedics and community services.

<sup>3</sup>The dynamic institutional risk assessment will require appropriate advice and input from relevant others including Infection, Prevention and Control Team (IPCT), Occupational Health Departments, Departments of Public Health. The local dynamic institutional risk assessment may indicate a requirement for specific HCWs to undertake antigen testing prior to returning to work particularly if they are **working with the most clinically vulnerable**. As part of this risk assessment, consideration should be given to redeployment until 10 days after their symptoms started (or the day their first positive test was taken if they did not have symptoms).

<sup>4</sup>If the staff member's antigen test result is positive on the 10th day, they should discuss this with their line manager who may undertake a further risk assessment. If a staff member is tested with an antigen test within 90 days of a prior positive COVID-19 test and the result is positive, they should follow the advice for staff members who have received a positive test result for COVID-19 again, unless a clinical or risk assessment suggests that a re-infection is unlikely.

<sup>5</sup>Health and care workers should feel well enough to return to work, and not have a high temperature. The staff member must continue to comply rigorously with all relevant infection, prevention and control procedures and personal protective equipment (PPE) must be worn properly in line with local/national recommendations.