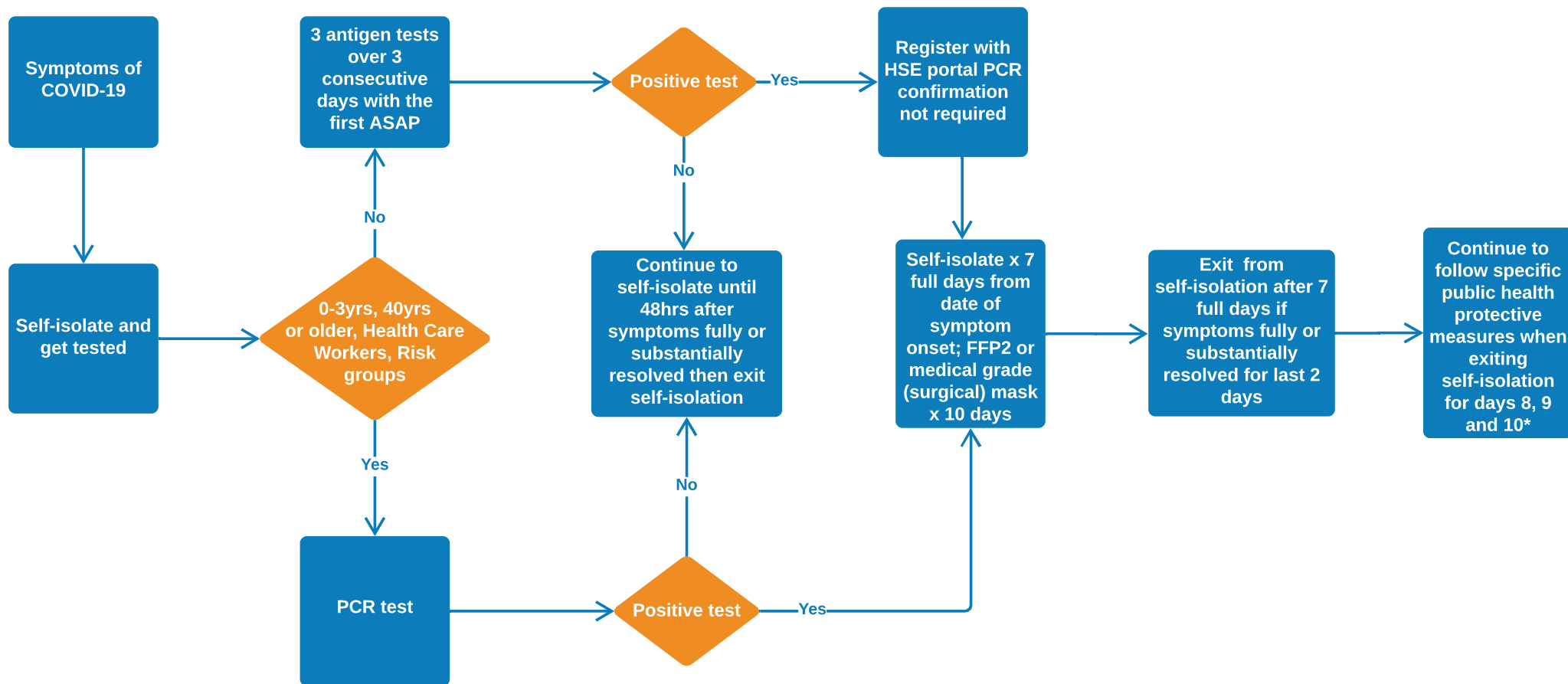




Guidance for Cases and Symptomatic Individuals (*not including close contacts*): Version 1.0 - 13/01/2022



*Day 8, 9 and 10

Limit close contact with other people outside their household, especially in crowded, enclosed or poorly ventilated spaces

Wear a FFP2 or medical grade (surgical) mask in crowded, enclosed or poorly ventilated spaces and where they are in close contact with other people

Avoid contact with anyone who is at higher risk of severe illness if infected with COVID-19

Work from home unless it is essential to attend in person