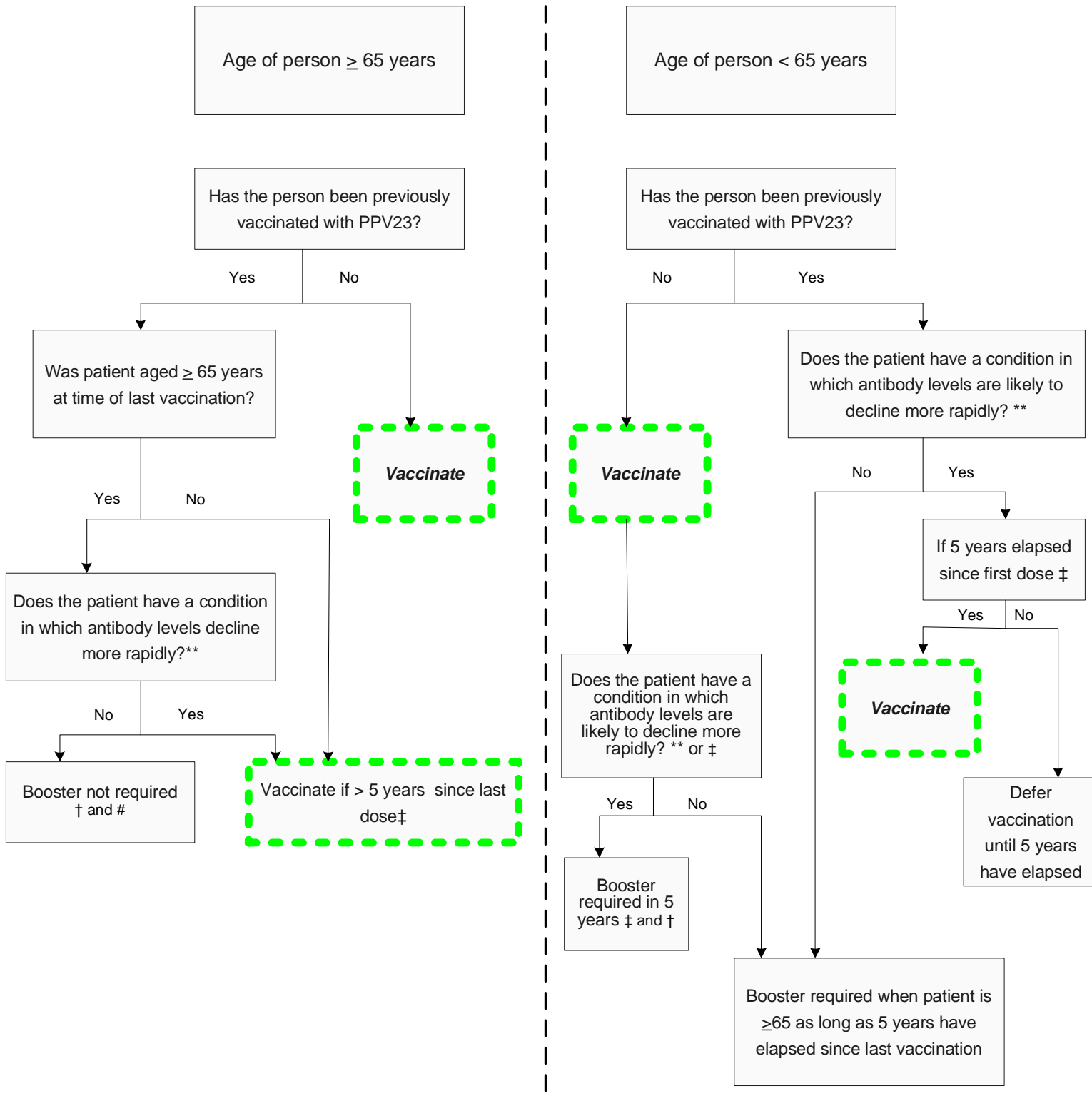


**Algorithm for Assessing PPV23 Vaccination Requirements
for individuals at Increased Risk of Invasive Pneumococcal Disease***



* Risk conditions include; asplenia or splenic dysfunction (splenectomy, sickle cell disease, coeliac syndrome); chronic renal, heart, lung, liver disease, diabetes mellitus, complement deficiency, immunosuppressive conditions; CSF leaks; cochlear implant recipients or candidates for implants; children < 5 years of age with history of invasive disease pneumococcal disease, smokers and alcoholics.

** Conditions where antibodies are more likely to decline rapidly include those with no spleen, with splenic dysfunction, immunosuppression including HIV infection, nephrotic syndrome or chronic renal disease. For these individuals a once only booster of PPV23 vaccine should be given 5 years after the first dose.

† The need and benefit for repeated booster doses among high-risk individuals is unclear and is not routinely indicated

‡ If vaccination has been given during chemotherapy or radiotherapy revaccination 3 months after treatment is indicated

not routinely recommended for immunocompetent people as lack of evidence of improved immunity and increase incidence in side-effects after repeated doses