

Summary

Children 12 months of age in Quarter 4-2009

The immunisation uptake figures for children at 12 months of age presented in this report are incomplete as only two HSE Areas were in a position to provide BCG data and only three Areas were in a position to provide the remaining vaccine data. The available BCG cohort figure may be around 16% of the birth cohort and the remaining vaccine cohort figures available may be around half the birth cohort. Based on the available data the national immunisation uptake rates were 88% for D₃, P₃, T₃, Hib₃, Polio₃, HepB₃, MenC₂ and PCV₂ and 95% for BCG.

Children 24 months of age in Quarter 4-2009

The immunisation uptake figures for children at 24 months of age presented in this report are incomplete as only four HSE Areas were in a position to provide data. The available vaccine cohort figures may be around 65% of the birth cohort. Based on the available data the national immunisation uptake rates were 93% for D₃, P₃, T₃, Hib₃, Polio₃ and MenC₃, 86% for Hib₆ and 90% for MMR₁.

Introduction

Since September 1st 2008 the new primary childhood immunisation schedule has been implemented (table 1).

The changes to the primary schedule for children born on or after 1st July 2008 include;
Introduction of a hepatitis B vaccine (as part of a 6 in 1 vaccine) given at 2, 4 and 6 months of age
Introduction of pneumococcal conjugate vaccine given at 2, 6 and 12 months of age
Change in timing of meningococcal serogroup C conjugate vaccination, now given at 4, 6 and 13 months of age
Change in timing of the *Haemophilus influenzae* type b vaccination, now given at 2, 4, 6 and 13 months of age.

Please see www.immunisation.ie for complete information on the Irish childhood immunisation schedule and changes to the schedule introduced in September 2008.

The immunisation uptake statistics presented in this report relate to children 12 and 24 months of age in Quarter 4-2009.

The immunisation uptake rates presented in this report for children at 12 months of age in Quarter 4-2009 are children born between 01/10/2008 and 31/12/2008 and who have received three doses of vaccines against diphtheria (D₃), pertussis (P₃), tetanus (T₃), *Haemophilus influenzae* type b (Hib₃), polio (Polio₃), hepatitis B (HepB₃), two doses of meningococcal serogroup C conjugate vaccine (MenC₂), two doses of pneumococcal conjugate vaccine (PCV₂) and one dose of BCG vaccine.

The immunisation uptake rates presented in this report for children at 24 months of age in Quarter 4-2009 are children born between 01/10/2007 and 31/12/2007 and who have received three doses of vaccines against diphtheria (D₃), pertussis (P₃), tetanus (T₃), *Haemophilus influenzae* type b (Hib₃), polio (Polio₃) and meningococcal group C (MenC₃), one booster dose of vaccine against *Haemophilus influenzae* type b given after 12 months of age (Hib₆) and one dose of vaccine against measles, mumps and rubella (MMR₁).

The national immunisation uptake statistics, based on available data, for Quarter 4-2009 are presented in this document, the uptake statistics are also presented by HSE Area and Local Health Office (LHO).

Table 1. Change in Primary Childhood Immunisation Schedule

Age	Children born before 01/07/2008	Children born on or after 01/07/2008
Birth	BCG	BCG
2 months	DTaP/Hib/IPV + MenC	DTaP/Hib/IPV/HepB + PCV
4 months	DTaP/Hib/IPV + MenC	DTaP/Hib/IPV/HepB + MenC
6 months	DTaP/Hib/IPV + MenC	DTaP/Hib/IPV/HepB + PCV + MenC
12 months	MMR + Hib	MMR + PCV
13 months	-	MenC + Hib

Please see www.immunisation.ie for complete information on the Irish childhood immunisation schedule and changes to the schedule introduced in September 2008.

BCG;	Bacille Calmette Guerin vaccine
DTaP	Diphtheria, Tetanus and acellular Pertussis vaccine
Hib	<i>Haemophilus influenzae</i> type b vaccine
IPV	Inactivate Polio Virus vaccine
HepB	Hepatitis B vaccine
PCV	Pneumococcal Conjugate Vaccine
MenC	Meningococcal group C vaccine
MMR	Measles, Mumps and Rubella vaccine

Immunisation uptake at 12 months

National and HSE Area uptake

Please note: The immunisation uptake figures for children at 12 months of age presented in this report are incomplete as only two HSE Areas were in a position to provide BCG data and only three Areas were in a position to provide the remaining vaccine data. The available BCG cohort figures may be around 16% of the birth cohort and the remaining vaccine cohort figures available may be around half the birth cohort. Immunisation uptake rates, where available, in children 12 months of age in Q4-2009 are presented by HSE Area in Table 1. National uptake rates, based on the available data, were 95% for BCG and 88% for D₃, P₃, T₃, Hib₃, Polio₃, HepB₃, MenC₂ and PCV₂.

National & HSE Area trends

Figure 1 presents the national uptake rates at 12 months for each vaccine from Q3-2000 to Q4-2009. Compared to Q3-2009, national uptake rates in Q4-2009 for D₃, P₃, T₃, Hib₃ and Polio₃ decreased by 2% and HepB₃, MenC₂ and PCV₂ decreased by 1%. Due to incompleteness of data in both Q3 and Q4 these decreases may not be genuine.

Compared to the previous quarter, uptake rates in the HSE-Eastern Area for D₃, P₃, T₃, Polio₃ and HepB₃ decreased by 1% while Hib₃ uptake decreased by 2%. Compared to the previous quarter, uptake rates in the HSE-North Western Area for D₃, P₃, T₃, Polio₃, MenC₂ and PCV₂ decreased by 1%, uptake rates for Hib₃ and HepB₃ decreased by 2% and the uptake rate for BCG was unchanged. In the HSE-South Eastern Area uptake rates for all vaccines were unchanged in Q4 2009 compared to Q3 2009.

LHO uptake

The immunisation uptake rates by LHO are shown in appendix 1.

All six LHOs reporting BCG data had ≥90% uptake with uptake of ≥95% in four of these LHOs.

The immunisation uptake target rate of 95% was not reached for D₃, P₃, T₃, Hib₃, Polio₃, HepB₃, MenC₂ and PCV₂ in any of the 16 LHOs reporting data.

Of the 16 LHOs reporting data five had ≥90% uptake of D₃, P₃, T₃, Hib₃, Polio₃, HepB₃, MenC₂ and PCV₂. D₃ immunisation uptake rates are mapped by LHO in figure 2.

Internationally

Vaccination coverage statistics for D₃, P₃, T₃, Hib₃ and Polio₃ for children 12 months of age in Quarter 4-2009 were 93.5% in England, 95.6% in Wales, 97.4% in Northern Ireland and 97.6% in Scotland.¹ MenC₂ uptake was 92.8% in England, 95.3% in Wales, 97.3% in Northern Ireland and 97.3% in Scotland.¹ PCV₂ uptake was 93.2% in England, 95.6% in Wales, 97.3% in Northern Ireland and 97.5% in Scotland.¹ Please see HPA report for caveats to data.¹

Table 1. Immunisation uptake (%) at 12 months in cohort born 01/10/2008–31/12/2008

HSE Area	No. in cohort*	BCG	D ₃	P ₃	T ₃	Hib ₃	Polio ₃	HepB ₃	MenC ₂	PCV ₂
Eastern	6798	na	88	88	88	87	88	87	87	87
Midland	na	na	na	na	na	na	na	na	na	na
Mid Western	na	na	na	na	na	na	na	na	na	na
North Eastern	na	na	na	na	na	na	na	na	na	na
North Western	976	95	90	90	90	90	90	89	89	90
South Eastern	2042	95	90	90	90	90	90	90	90	90
Southern	na	na	na	na	na	na	na	na	na	na
Western	na	na	na	na	na	na	na	na	na	na
Ireland	9816†	95	88	88	88	88	88	88	88	88

na = not available at this time

*As the denominator/number in cohort varied slightly according to vaccine, most commonly used number is presented here.

†Number in cohort for BCG is 3,018.

Please note the national figures are all incomplete.

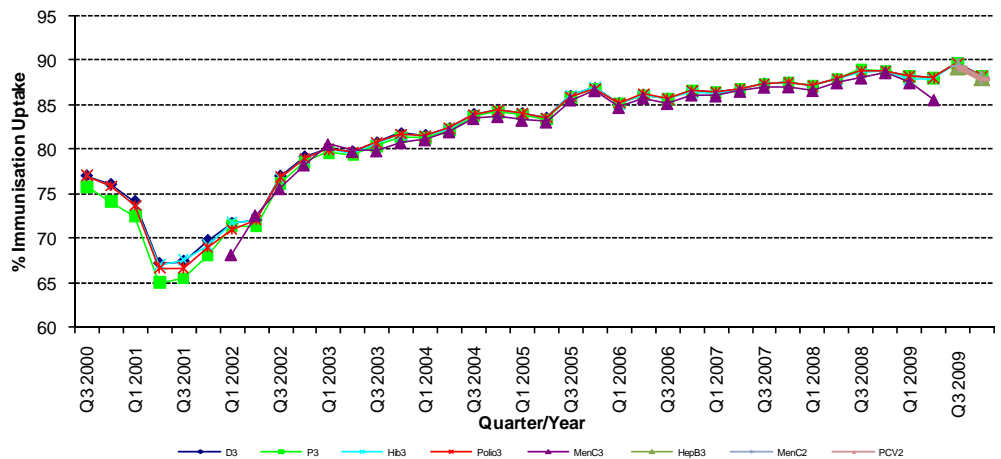


Figure 1. National quarterly immunisation uptake rates at 12 months

Since T₃ uptake identical to D₃ uptake only D₃ uptake figures presented

The Q3 2008 MenC₃ uptake figure is based on data from six of the eight HSE Areas

The Q1-2009 HSE-Eastern Area D₃, P₃, T₃, Polio₃ and MMR₁ uptake figures exclude those born on the 31/03/2007.

The Q3 2009 figures are incomplete as two HSE Areas were unable to provide data, two additional areas were unable to provide MenC₂ data and one additional area was unable to provide PCV₂ data.

The Q4 2009 figures are incomplete as five HSE Areas were unable to provide data.

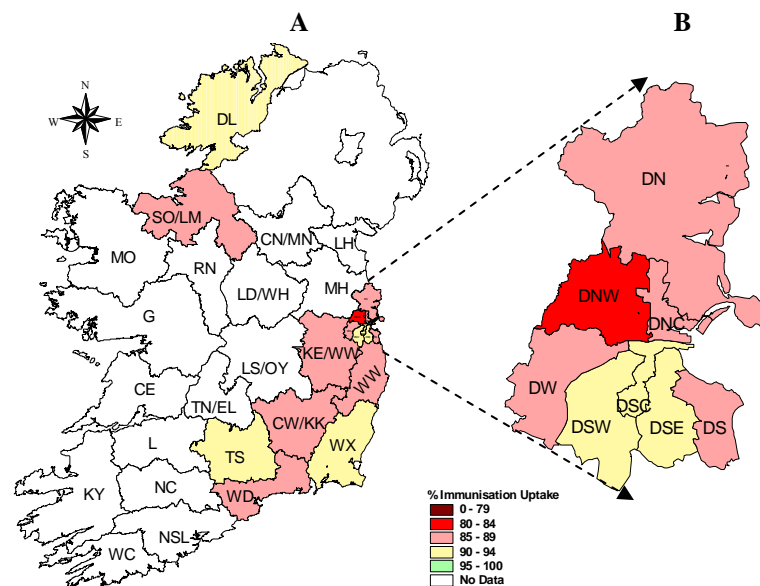


Figure 2. D₃ immunisation uptake rates (%) by LHO, in those 12 months of age in Quarter 4 2009, in (A) Ireland and (B) Dublin. Please see Appendix 3 to translate LHO abbreviations.

Immunisation uptake at 24 months

National and HSE Area uptake

The immunisation uptake figures for children at 24 months of age presented in this report are incomplete as only four HSE Areas were in a position to provide data. The available vaccine cohort figures may be around 65% of the birth cohort. Immunisation uptake rates, where available, in children 24 months of age in Q4-2009 are presented (Table 2). National uptake rates, based on available data, were 93% for D₃, P₃, T₃, Hib₃, Polio₃ and MenC₃. All four HSE Areas had ≥91% uptake of D₃, P₃, T₃, Hib₃, Polio₃ and MenC₃. The target uptake of 95% was reached/exceeded in the HSE-Midland and North Western Areas for D₃, P₃, T₃, Hib₃, Polio₃ and MenC₃. Hib_b uptake was 86% nationally (based on available data) with ≥90% uptake of Hib_b in two of the four HSE Areas (table 2). MMR₁ uptake was 90% nationally (based on available data) with uptake of ≥91% in three HSE Areas (table 2).

Table 2. Immunisation uptake (%) at 24 months in cohort born 01/10/2007 – 31/12/2007

HSE Area	No. in Cohort*	D ₃	P ₃	T ₃	Hib ₃	Hib _b	Polio ₃	MenC ₃	MMR ₁
Eastern	5923	93	93	93	92	83	93	92	88
Midland	1286	97	97	97	97	92	97	97	93
Mid Western	na	na	na	na	na	na	na	na	na
North Eastern	na	na	na	na	na	na	na	na	na
North Western	942	97	97	97	97	93	97	96	93
South Eastern	2024	93	92	93	92	88	92	91	91
Southern	na	na	na	na	na	na	na	na	na
Western	na	na	na	na	na	na	na	na	na
Ireland	10175	93	93	93	93	86	93	93	90

* As the denominator/number in cohort varied slightly according to vaccine, most commonly used number is presented here. Please note the national figures are all incomplete.

Trends

Figure 3 presents the national uptake rates at 24 months for each vaccine from Q1-1999 to Q4-2009. In Q4-2009, compared to the previous quarter, national uptake rates for D₃, P₃, T₃, Hib₃ and Polio₃ decreased by 1%, MenC₃ was unchanged, Hib_b decreased by 3% and MMR₁ decreased by 1%. Due to incompleteness of data in Q4-2009 this comparison may be invalid.

In Q4 2009 in the HSE-Eastern Area, compared to the previous quarter, D₃, P₃, T₃, Polio₃ and MenC₃ uptake was unchanged, Hib₃ decreased by 1%, Hib_b decreased by 2% and MMR₁ decreased by 1%. In the HSE-Midland Area, compared to the previous quarter, uptake rates for D₃, P₃, T₃, Hib₃, Polio₃, MenC₃ and MMR₁ increased by 2% and Hib_b uptake increased by 1%. In the HSE-North Western Area, compared to the previous quarter, uptake rates for D₃, P₃, T₃, Hib₃ and Polio₃ increased by 2%, Hib_b uptake increased by 1% and MenC₃ and MMR₁ uptake increased by 3%. In the HSE-South Eastern Area, compared to the previous quarter, uptake rates for D₃, T₃ and MMR₁ increased by 1%, P₃, Hib₃, Polio₃ and MenC₃ were unchanged, Hib_b decreased by 4% and MMR₁ increased by 1%.

LHO uptake

Immunisation uptake rates for D₃, P₃, T₃, Hib₃, Hib_b, Polio₃, MenC₃ and MMR₁ in children 24 months of age in Q4-2009 are presented by LHO in Appendix 2.

The immunisation uptake target rate of 95% was reached or exceeded in the Local Health Offices (LHOs) of: Longford/Westmeath for D₃, P₃, T₃, Hib₃, Polio₃, MenC₃ and MMR₁; Donegal, Dublin South, Dublin South East, Laois/Offaly and Wexford for D₃, P₃, T₃, Hib₃, Polio₃ and MenC₃ and Sligo/Leitrim for D₃, P₃, T₃, Hib₃ and Polio₃.

Of the 18 LHOs reporting data; seven had ≥95% uptake of D₃, P₃, T₃, Hib₃ and Polio₃; six had ≥95% uptake of MenC₃, and one had ≥95% uptake of MMR₁.

All eighteen LHOs reporting data had ≥90% uptake of D₃, P₃, T₃, Hib₃ and Polio₃. Of the 18 LHOs; 15 had ≥90% uptake of MenC₃; 12 had ≥90% uptake of MMR₁ and five had ≥90% uptake of Hib_b.

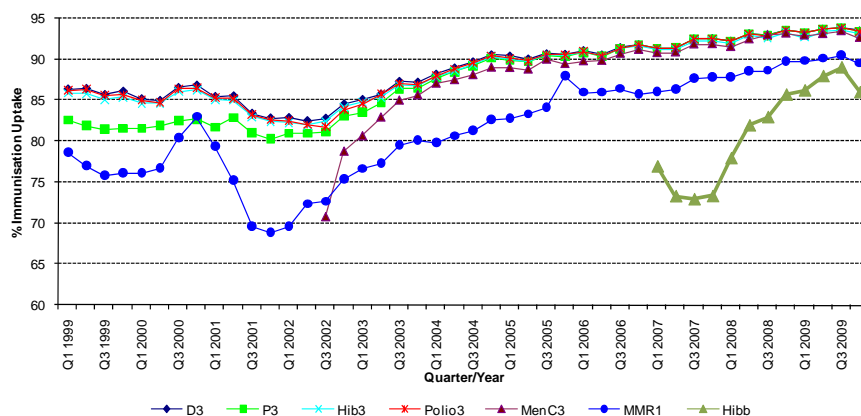


Figure 3. National quarterly immunisation uptake rates at 24 months

Notes: The Q4-2005 MMR₁ figure is based on data from seven of the eight HSE-Areas. The Q1-2006 MMR₁ figure includes the HSE-Eastern Area figure that is an estimate only. The Q1-2007, Q3-2007, Q2-2008 and Q3-2008 Hib_b figures are based on data from seven of the eight HSE Areas. In Q1-2008 the HSE-SE changed their Hib_b data extraction method compared to previous quarters; in Q1-2008 the uptake of Hib_b in the HSE-SE was 83% compared to 53% in Q4-2007. The Q3-2008 MenC₃ figure is based on data from six of the eight HSE Areas. The Q1-2009 HSE-Eastern Area D₃, P₃, T₃, Polio₃ and MMR₁ uptake figures exclude those born on the 31/03/2007. The Q2-2009 HSE-Eastern Area Hib_b uptake figures exclude uptake figures from Dublin North. The Q4-2009 figures are based on data from only four of the eight HSE Areas. The Q4-2009 Hib_b figures also exclude uptake figures from Dublin North.

Internationally

In Q4-2009, vaccination coverage statistics at 24 months for D₃, P₃, T₃, Hib₃ and Polio₃ were 95.3% in England, 97.5% in Wales, 98.6% in Northern Ireland and 98.3% in Scotland.¹ Infant MenC uptake was 94.2% in England, 96.4% in Wales, 97.0% in Northern Ireland and 96.5% in Scotland.¹ Hib/MenC booster was 89.8% in England, 94.5% in Wales, 94.8% in Northern Ireland and 94.2% in Scotland.¹ MMR₁ uptake was 87.7% in England, 93.1% in Wales, 92.1% in Northern Ireland and 94.2% in Scotland.¹ Please see HPA report for caveats to data.¹

Conclusions

In Q4-2009, the uptake rates at 24 months for D₃, P₃, T₃, Hib₃, Polio₃ and MenC₃ were ≥91% in all four HSE Areas reporting data and MMR₁ uptake was ≥91% in three HSE Areas. Two of the four HSE Areas reached the target uptake of ≥95% for D₃, P₃, T₃, Hib₃, Polio₃ and MenC₃.

Further information

A complete listing of national and regional immunisation uptake statistics at 12 and 24 months for each HSE Area is also available at <http://www.hpsc.ie>.

Acknowledgements

HPSC would like to thank the HSE Areas for providing data and special thanks to the Specialists in Public Health Medicine, Immunisation Co-ordinators, Surveillance Scientists and Systems Analysts for their assistance.

References 1. COVER programme: October to December 2009. Health Protection Report 2010: 4 (12). Available at: <http://www.hpa.org.uk/hpr/infections/immunisation.htm#091012> (accessed 26/03/2010)

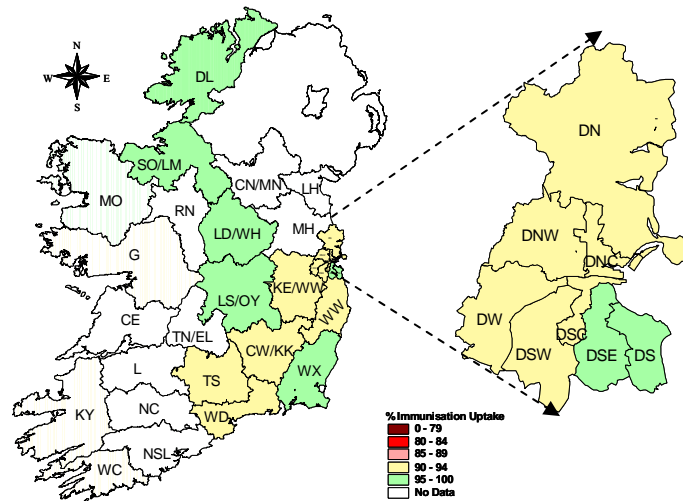
A**B**

Figure 4. D₃ immunisation uptake rates (%) by LHO, in those 24 months of age in Quarter 4 2009, in (A) Ireland and (B) Dublin. Please see Appendix 3 to translate LHO codes.

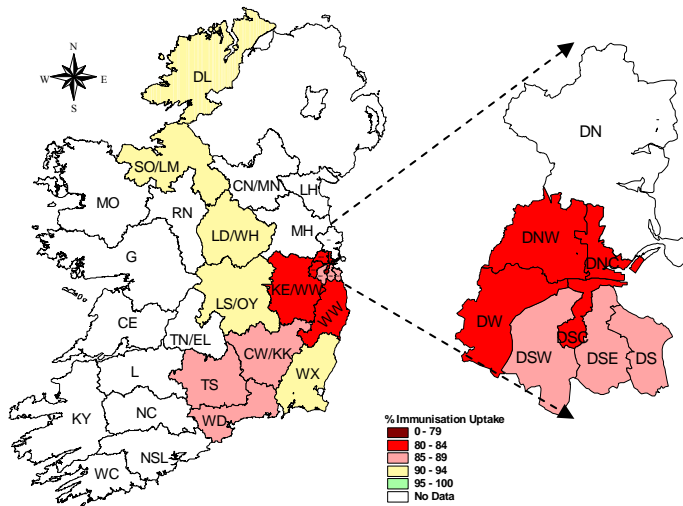
A**B**

Figure 5. Hib₆ immunisation uptake rates (%) by LHO, in those 24 months of age in Quarter 4 2009, in (A) Ireland and (B) Dublin. Please see Appendix 3 to translate LHO codes.

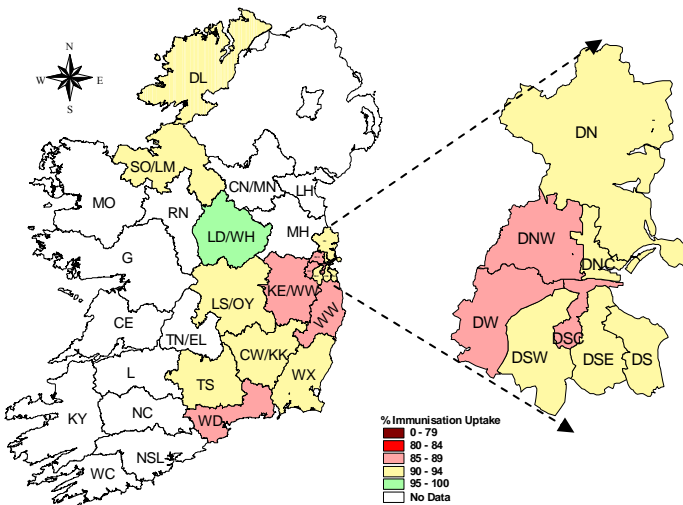
A**B**

Figure 6. MMR₁ immunisation uptake rates (%) by LHO, in those 24 months of age in Quarter 4 2009, in (A) Ireland and (B) Dublin. Please see Appendix 3 to translate LHO codes.

Appendix 1

Immunisation Uptake at 12 Months in Cohort Born 01/10/2008-31/12/2008												
HSE Area	LHO/HSE Area	No. in cohort for BCG	No. in cohort for other vaccines†	Immunisation Uptake (%) *								
				BCG	D ₃	P ₃	T ₃	Hib ₃	Polio ₃	HepB ₃	MenC ₂	PCV ₂
Eastern†	Dublin South	na	404	na	89	89	89	89	89	89	90	89
	Dublin South East	na	370	na	91	91	91	91	91	91	91	90
	Dublin South City	na	469	na	90	90	90	90	90	89	89	89
	Dublin South West	na	670	na	92	92	92	91	92	91	91	92
	Dublin West	na	696	na	86	86	86	86	86	86	86	85
	Dublin North West	na	948	na	83	83	83	83	83	82	82	82
	Dublin North Central	na	448	na	89	89	89	89	89	88	88	88
	Dublin North	na	1106	na	89	89	89	89	89	88	88	89
	Kildare/West Wicklow	na	1117	na	87	87	87	87	87	87	86	86
	Wicklow	na	570	na	87	87	87	87	87	86	87	87
	HSE-E Total	na	6798	na	88	88	88	87	88	87	87	87
Midland	Laois/Offaly	na	na	na	na	na	na	na	na	na	na	na
	Longford/Westmeath	na	na	na	na	na	na	na	na	na	na	na
	HSE-M Total	na	na	na	na	na	na	na	na	na	na	na
Mid Western	Clare	na	na	na	na	na	na	na	na	na	na	na
	Limerick	na	na	na	na	na	na	na	na	na	na	na
	Tipperary NR/East Limerick	na	na	na	na	na	na	na	na	na	na	na
	HSE-MW Total	na	na	na	na	na	na	na	na	na	na	na
North Eastern	Cavan/Monaghan	na	na	na	na	na	na	na	na	na	na	na
	Louth	na	na	na	na	na	na	na	na	na	na	na
	Meath	na	na	na	na	na	na	na	na	na	na	na
	HSE-NE Total	na	na	na	na	na	na	na	na	na	na	na
North Western	Donegal	601	601	94	91	91	91	91	91	91	91	91
	Sligo/Leitrim	375	375	95	87	87	87	87	87	86	87	87
	HSE-NW Total	976	976	95	90	90	90	90	90	89	89	90
South Eastern	Carlow/Kilkenny	547	547	95	88	88	88	88	88	89	88	88
	South Tipperary	364	364	95	93	93	93	93	93	93	93	93
	Waterford	557	557	92	88	88	88	88	88	88	88	88
	Wexford	574	574	97	92	92	92	92	92	91	92	92
	HSE-SE Total	2042	2042	95	90	90	90	90	90	90	90	90
Southern	North Cork	na	na	na	na	na	na	na	na	na	na	na
	North South Lee	na	na	na	na	na	na	na	na	na	na	na
	West Cork	na	na	na	na	na	na	na	na	na	na	na
	Kerry	na	na	na	na	na	na	na	na	na	na	na
	HSE-S Total	na	na	na	na	na	na	na	na	na	na	na
Western	Galway	na	na	na	na	na	na	na	na	na	na	na
	Mayo	na	na	na	na	na	na	na	na	na	na	na
	Roscommon	na	na	na	na	na	na	na	na	na	na	na
	HSE-W Total	na	na	na	na	na	na	na	na	na	na	na
	Ireland *	3018	9816	95	88	88	88	88	88	88	88	88

na=not available

* The national data are incomplete as only two Areas were able to provide BCG data and only three were able to provide data for the remainder of the vaccines.

† As the denominator/number in cohort varied slightly according to vaccine, most commonly used number is presented here.

Please note while North Lee and South Lee are two separate LHOs their combined immunisation uptake data are reported here.

Uptake in Sligo/Leitrim was reported as being down as the immunisation staff were drafted in to help with the pandemic vaccination clinics and are now behind with the childhood immunisation data entry.

Uptake may be down in other areas for this reason also.

Appendix 2

Immunisation Uptake at 24 Months in Cohort Born 01/10/2007-31/12/2007											
HSE Area	LHO/HSE Area	No. in cohort for Hib ₃	No. in cohort for other vaccines†	Immunisation Uptake (%)*							
				D ₃	P ₃	T ₃	Hib ₃	Hib ₆	Polio ₃	MenC ₃	MMR ₁
Eastern†	Dublin South	386	386	96	96	96	96	85	96	96	90
	Dublin South East	383	383	98	98	98	98	87	98	97	92
	Dublin South City	418	418	92	92	92	91	81	92	89	86
	Dublin South West	653	653	94	94	94	94	87	94	92	93
	Dublin West	731	731	92	92	92	92	82	92	91	86
	Dublin North West	930	930	91	91	91	90	82	91	90	85
	Dublin North Central	433	433	94	94	94	93	84	94	92	90
	Dublin North	na	1061	93	93	93	93	na	93	93	90
	Kildare/West Wicklow	1152	1152	90	90	90	90	82	90	89	86
Wicklow	524	524	93	93	93	92	81	93	92	85	
HSE-E Total †	5610	6671	93	93	93	92	83	93	92	88	
Midland	Laos/Offaly	682	695	95	95	95	95	90	95	95	92
	Longford/Westmeath	580	591	99	99	99	99	94	99	99	95
	HSE-M Total	1262	1286	97	97	97	97	92	97	97	93
Mid Western	Clare	na	na	na	na	na	na	na	na	na	na
	Limerick	na	na	na	na	na	na	na	na	na	na
	Tipperary NR/East Limerick	na	na	na	na	na	na	na	na	na	na
	HSE-MW Total	na	na	na	na	na	na	na	na	na	na
North Eastern	Cavan/Monaghan	na	na	na	na	na	na	na	na	na	na
	Louth	na	na	na	na	na	na	na	na	na	na
	Meath	na	na	na	na	na	na	na	na	na	na
	HSE-NE Total	na	na	na	na	na	na	na	na	na	na
North Western	Donegal	598	598	98	98	98	97	94	98	97	94
	Sligo/Leitrim	344	344	97	97	97	96	92	97	94	92
	HSE-NW Total	942	942	97	97	97	97	93	97	96	93
South Eastern	Carlow/Kilkenny	506	506	90	90	90	90	87	90	89	91
	South Tipperary	375	375	93	93	93	92	89	93	91	93
	Waterford	553	553	92	91	92	91	86	91	90	88
	Wexford	590	590	96	96	96	95	90	95	95	92
	HSE-SE Total	2024	2024	93	92	93	92	88	92	91	91
Southern	North Cork	na	na	na	na	na	na	na	na	na	na
	North South Lee	na	na	na	na	na	na	na	na	na	na
	West Cork	na	na	na	na	na	na	na	na	na	na
	Kerry	na	na	na	na	na	na	na	na	na	na
	HSE-S Total	na	na	na	na	na	na	na	na	na	na
Western	Galway	na	na	na	na	na	na	na	na	na	na
	Mayo	na	na	na	na	na	na	na	na	na	na
	Roscommon	na	na	na	na	na	na	na	na	na	na
	HSE-W Total	na	na	na	na	na	na	na	na	na	na
Ireland*	9838	10923	93	93	93	93	86	93	93	90	

na=not available

*National figures are incomplete as only four Areas were able to provide data and Dublin North were unable to provide Hib₆ data.

†As the denominator/number in cohort varied slightly according to vaccine, most commonly used number is reported here.

Please note while North Lee and South Lee are two separate LHOs their combined immunisation uptake data are reported here.

Uptake in Sligo/Leitrim was reported as being down as the immunisation staff were drafted in to help with the pandemic vaccination clinics and are now behind with the childhood immunisation data entry.

Uptake may be down in other areas for this reason also.

Appendix 3

Local Health Office (LHO) Abbreviations (used in maps in this report)	Local Health Office (LHO)
CE	Clare
CN/MN	Cavan/Monaghan
CW/KK	Carlow/Kilkenny
DL	Donegal
DN	Dublin North
DNC	Dublin North Central
DNW	Dublin North West
DS	Dublin South
DSC	Dublin South City
DSE	Dublin South East
DSW	Dublin South West
DW	Dublin West
G	Galway
KE/WW	Kildare/West Wicklow
KY	Kerry
L	Limerick
LD/WD	Longford/Westmeath
LH	Louth
LS/OY	Laois/Offaly
MH	Meath
MO	Mayo
NC	North Cork
NSL*	North South Lee*
RN	Roscommon
SO/LM	Sligo/Leitrim
TN/EL	Tipperary North /East Limerick
TS	South Tipperary
WC	West Cork
WD	Waterford
WX	Wexford
WW	Wicklow

*Please note while North Lee and South Lee are two separate LHOs their combined immunisation uptake data are reported here