

Summary

Children 12 months of age in Quarter 3-2009

The immunisation uptake figures for children at 12 months of age presented in this report are incomplete as two HSE Areas were unable to provide data, two additional areas were unable to provide MenC₂ data and one additional area was unable to provide PCV₂ data. Therefore, all cohort numbers are incomplete and the numbers in the MenC₂ and PCV₂ cohorts are approximately half those in the available D₃, P₃, T₃, Hib₃ and Polio₃ cohorts.

- ❖ Based on the available data the **national** immunisation uptake rates were 90% for D₃, P₃, T₃, Hib₃ and Polio₃ and 89% for HepB₃, MenC₂ and PCV₂.
 - The highest uptake rates for D₃, P₃, T₃, Hib₃, Polio₃, HepB₃ and PCV₂ was in the **HSE-Mid Western Area** (92%). Four HSE Areas had ≥90% uptake of D₃, P₃, T₃, Hib₃, Polio₃ and HepB₃.
 - Eight of the nine **Local Health Offices** (LHOs) reporting BCG had uptake of ≥95%. One LHO had ≥95% uptake of D₃, P₃, T₃, Hib₃, Polio₃, MenC₂ and PCV₂. None of the LHOs had ≥95% of HepB₃.
 - Of the 25 LHOs, where D₃, P₃, T₃, Hib₃, Polio₃ and HepB₃ data were available, 17 had ≥90% uptake of D₃, P₃, T₃, Hib₃ and Polio₃ and 16 had ≥90% uptake of HepB₃. Of the 12 LHOs, where MenC₂ data were available, seven had uptake of ≥90%. Of the 15 LHOs, where PCV₂ data were available, eight had uptake of ≥90%. All nine LHOs, where BCG data were available, had ≥90% uptake.

Children 24 months of age in Quarter 3-2009

- ❖ The **national** immunisation uptake rates were 94% for D₃, P₃, T₃, Hib₃ and Polio₃, 93% for MenC₃ and 89% for Hib₆. When compared to the previous quarter, uptake of D₃, P₃, T₃, Polio₃ and MenC₃ were unchanged and uptake of Hib₃ and Hib₆ increased by 1%.

The national immunisation uptake rate for MMR₁ was 91%, an increase of 1% when compared to the previous quarter.

- All eight **HSE Areas** had ≥90% uptake of D₃, P₃, T₃, Hib₃, Polio₃ and MenC₃. The target uptake rate of 95% was reached or exceeded for D₃, P₃, T₃, Hib₃, Polio₃ and MenC₃ in the HSE-Midland, North Eastern and Southern Areas, for D₃, P₃, T₃ and Polio₃ in the HSE-Mid Western Area and for D₃, P₃, T₃, Hib₃ and Polio₃ in the HSE- North Western Area.

Seven HSE Areas had ≥90% uptake of MMR₁ with the highest uptake in the HSE-Midland Area (93%).

Five HSE Areas had ≥90% uptake of Hib₆ with the target uptake rate of 95% reached in the HSE-North Eastern Area (95%).

 - Sixteen **Local Health Offices** (LHOs) had ≥95% uptake of D₃, P₃, T₃, and Polio₃.
Thirteen LHOs had ≥95% uptake of Hib₃
Twelve LHOs had ≥95% uptake of MenC₃
Four LHOs had ≥95% uptake of Hib₆
Four LHOs had ≥95% uptake of MMR₁
 - Thirty LHOs had ≥90% uptake of D₃ and T₃
Twenty nine LHOs had ≥90% uptake of P₃, Hib₃, Polio₃ and MenC₃
Twenty one LHOs had ≥90% uptake of MMR₁
Seventeen LHOs had ≥90% uptake of Hib₆

Introduction

Since September 1st 2008 the new primary childhood immunisation schedule has been implemented (table 1).

The changes to the primary schedule for children born on or after 1st July 2008 include;
 Introduction of a hepatitis B vaccine (as part of a 6 in 1 vaccine) given at 2, 4, 6 months of age
 Introduction of pneumococcal conjugate vaccine given at 2, 6 and 12 months of age
 Change in timing of meningococcal serogroup C conjugate vaccination, now given at 4, 6 and 13 months of age
 Change in timing of the *Haemophilus influenzae* type B vaccination, now given at 2, 4, 6 and 13 months of age.

Please see www.immunisation.ie for complete information on the Irish childhood immunisation schedule and changes to the schedule introduced in September 2008.

The immunisation uptake statistics presented in this report relate to children 12 and 24 months of age in Quarter 3-2009.

The immunisation uptake rates presented in this report for children at 12 months of age in Quarter 3-2009 are children born between 01/07/2008 and 30/09/2008 and who have received three doses of vaccines against diphtheria (D₃), pertussis (P₃), tetanus (T₃), *Haemophilus influenzae* type b (Hib₃), polio (Polio₃), hepatitis B (HepB₃), two doses of meningococcal serogroup C conjugate vaccine (MenC₂), two doses of pneumococcal conjugate vaccine (PCV₂) and one dose of BCG vaccine.

The immunisation uptake rates presented in this report for children at 24 months of age in Quarter 3-2009 are children born between 01/07/2007 and 30/09/2007 and who have received three doses of vaccines against diphtheria (D₃), pertussis (P₃), tetanus (T₃), *Haemophilus influenzae* type b (Hib₃), polio (Polio₃) and meningococcal group C (MenC₃), one booster dose of vaccine against *Haemophilus influenzae* type b given after 12 months of age (Hib₆) and one dose of vaccine against measles, mumps and rubella (MMR₁).

The national immunisation uptake statistics for Quarter 3-2009 are presented in this document, the uptake statistics are also presented by HSE Area and Local Health Office (LHO).

Table 1. Change in Primary Childhood Immunisation Schedule

| Age | Children born before 01/07/2008 | Children born on or after 01/07/2008 |
|-----------|---------------------------------|--------------------------------------|
| Birth | BCG | BCG |
| 2 months | DTaP/Hib/IPV + MenC | DTaP/Hib/IPV/HepB + PCV |
| 4 months | DTaP/Hib/IPV + MenC | DTaP/Hib/IPV/HepB + MenC |
| 6 months | DTaP/Hib/IPV + MenC | DTaP/Hib/IPV/HepB + PCV + MenC |
| 12 months | MMR + Hib | MMR + PCV |
| 13 months | - | MenC + Hib |

Please see www.immunisation.ie for complete information on the Irish childhood immunisation schedule and changes to the schedule introduced in September 2008.

| | |
|------|---|
| BCG; | Bacille Calmette Guerin vaccine |
| DTaP | Diphtheria, Tetanus and acellular Pertussis vaccine |
| Hib | <i>Haemophilus influenzae</i> type b vaccine |
| IPV | Inactivate Polio Virus vaccine |
| HepB | Hepatitis B vaccine |
| PCV | Pneumococcal Conjugate Vaccine |
| MenC | Meningococcal group C vaccine |
| MMR | Measles, Mumps and Rubella vaccine |

Immunisation uptake at 12 months

National and HSE Area uptake

Please note: The immunisation uptake figures for children at 12 months of age presented in this report are incomplete as two HSE Areas were unable to provide data, two additional areas were unable to provide MenC₂ data and one additional area was unable to provide PCV₂ data. Therefore, all cohort numbers are incomplete and the numbers in the MenC₂ and PCV₂ cohorts are approximately half those in the available D₃, P₃, T₃, Hib₃ and Polio₃ cohorts. Immunisation uptake rates in children 12 months of age in Q3-2009 are presented by HSE Area in Table 1. National uptake rates were 90% for D₃, P₃, T₃, Hib₃ and Polio₃ and 89% for HepB₃, MenC₂ and PCV₂. The highest uptake rates for these vaccines (except MenC₂) at 12 months were in the HSE- Mid Western Area (92%) while the lowest rates (except PCV₂) were in the HSE-Western Area (87%). Four HSE Areas had ≥90% uptake of D₃, P₃, T₃, Hib₃, Polio₃ and HepB₃ (table 1). BCG uptake data were available for three of the eight HSE-Areas. These areas cover approximately a third of the national birth cohort. Where data were available, national uptake was 96% for the BCG vaccination. This is unchanged compared to Q2-2009.

Table 1. Immunisation uptake (%) at 12 months in cohort born 01/07/2008–30/09/2008

| HSE Area | No. in cohort* | BCG | D ₃ | P ₃ | T ₃ | Hib ₃ | Polio ₃ | HepB ₃ | MenC ₂ | PCV ₂ |
|---------------|----------------|-----|----------------|----------------|----------------|------------------|--------------------|-------------------|-------------------|------------------|
| Eastern | 7058 | na | 89 | 89 | 89 | 89 | 89 | 88 | na | na |
| Midland | na | na | na | na | na | na | na | na | na | na |
| Mid Western | 1562 | 97 | 92 | 92 | 92 | 92 | 92 | 92 | na | 92 |
| North Eastern | 2192 | na | 92 | 92 | 92 | 92 | 92 | 91 | 91 | 87 |
| North Western | 997 | 95 | 91 | 91 | 91 | 92 | 91 | 91 | 90 | 91 |
| South Eastern | 2200 | 95 | 90 | 90 | 90 | 90 | 90 | 90 | 90 | 90 |
| Southern | na | na | na | na | na | na | na | na | na | na |
| Western | 1774 | na | 87 | 87 | 87 | 87 | 87 | 87 | 87 | 88 |
| Ireland | 15783† | 96 | 90 | 90 | 90 | 90 | 90 | 89 | 89 | 89 |

na = not available at this time

*As the denominator/number in cohort varied slightly according to vaccine, most commonly used number is presented here. † Number in cohort for BCG, HepB₃, MenC₂ and PCV₂ is 4,741, 15,785, 7,143 and 8,711, respectively.

National & HSE Area trends

Figure 1 presents the national uptake rates at 12 months for each vaccine from Q3-2000 to Q3-2009. In Q3-2009 national uptake rates for D₃, P₃, T₃, Hib₃ and Polio₃ increased by 2% compared to the previous quarter, however, due to incompleteness of data this increase may not be genuine.

In Q3-2009, D₃, P₃, T₃, Hib₃ and Polio₃ uptake rates, in children 12 months of age, increased by 3% in the HSE-Eastern, increased by 1% in the Mid Western, North Eastern and South Eastern Areas and were unchanged in the HSE-Western Area when compared to the previous quarter. In Q3 2009 in the HSE North Western Area D₃, P₃, T₃ and Polio₃ uptake rates decreased by 1% while Hib₃ were unchanged compared to the previous quarter.

LHO uptake

The immunisation uptake rates by LHO are shown in appendix 1.

All nine LHOs reporting BCG data had ≥90% uptake with uptake of ≥95% in eight of these LHOs.

The immunisation uptake target rate of 95% was reached or exceeded in one LHO (Roscommon) for D₃, P₃, T₃, Hib₃, Polio₃, MenC₂ and PCV₂. None of the LHOs had ≥95% of HepB₃.

Of the 25 LHOs reporting D₃, P₃, T₃, Hib₃, Polio₃ and HepB₃ data 17 had ≥90% uptake of D₃, P₃, T₃, Hib₃ and Polio₃ and 16 had ≥90% uptake of HepB₃. D₃ immunisation uptake rates are mapped by LHO in figure 2. Of the 12 LHOs, where MenC₂ data were available, seven had uptake of ≥90%. Of the 15 LHOs, where PCV₂ data were available, eight had uptake of ≥90%. All nine LHOs, where BCG data were available, had ≥90% uptake.

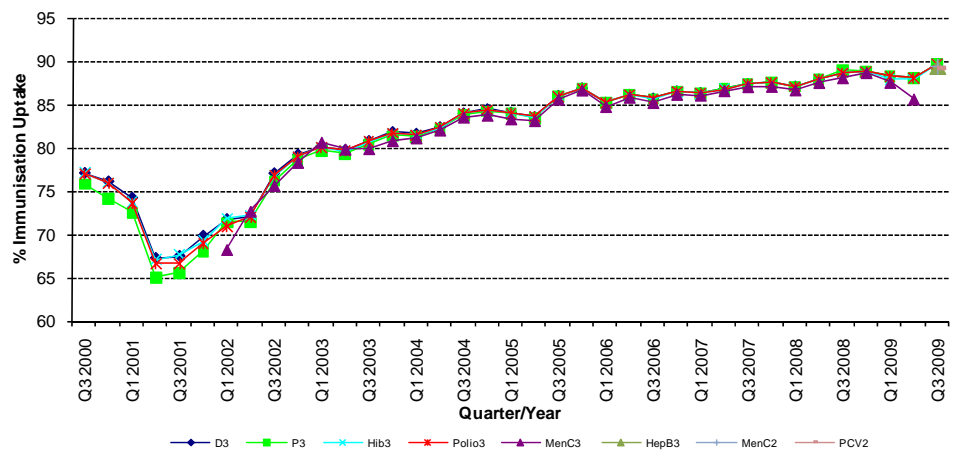


Figure 1. National quarterly immunisation uptake rates at 12 months

Since T₃ uptake identical to D₃ uptake only D₃ uptake figures presented

The Q3 2008 MenC₃ uptake figure is based on data from six of the eight HSE Areas

The Q1-2009 HSE-Eastern Area D₃, P₃, T₃, Polio₃ and MMR₁ uptake figures exclude those born on the 31/03/2007.

The Q3 2009 figures are incomplete as two HSE Areas were unable to provide data, two additional areas were unable to provide MenC₂ data and one additional area was unable to provide PCV₂ data.

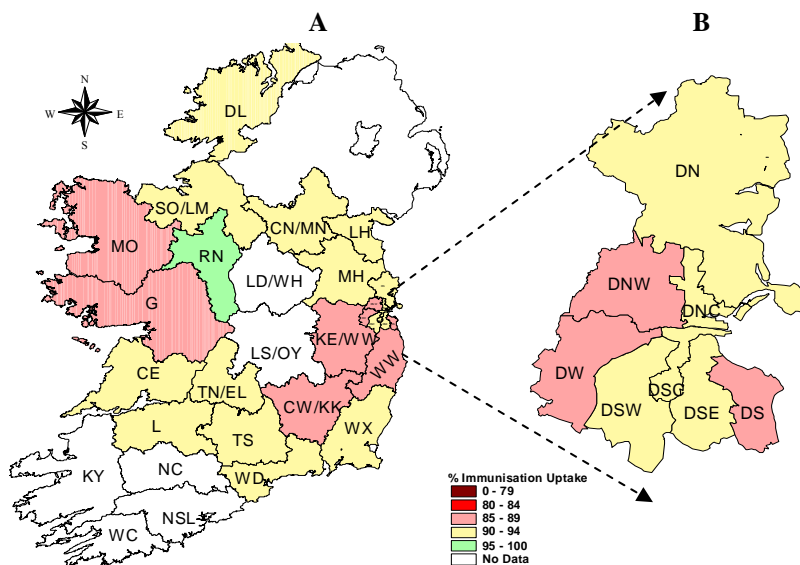


Figure 2. D₃ immunisation uptake rates (%) by LHO, in those 12 months of age in Quarter 3 2009, in (A) Ireland and (B) Dublin. Please see Appendix 3 to translate LHO abbreviations.

Immunisation uptake at 24 months

National and HSE Area uptake

Immunisation uptake rates in children 24 months of age in Q3-2009 are presented (Table 2). National uptake rates were 94% for D₃, P₃, T₃, Hib₃ and Polio₃ and 93% for MenC₃. All eight HSE Areas had ≥91% uptake of D₃, P₃, T₃, Hib₃, Polio₃ and MenC₃. The target uptake of 95% was reached/exceeded in the HSE-Midland, North Eastern and Southern Areas for D₃, P₃, T₃, Hib₃, Polio₃ and MenC₃, in the HSE-Mid Western Area for D₃, P₃, T₃ and Polio₃ and in the HSE-North Western for D₃, P₃, T₃, Hib₃ and Polio₃. Hib_b uptake was 89% nationally with ≥90% uptake of Hib_b in five HSE Areas (table 2); the target uptake rate of 95% was reached for Hib_b in the HSE-North Eastern Area. MMR₁ uptake was 91% nationally with uptake of ≥90% in seven of the HSE Areas (table 2); the highest uptake rate of MMR₁ was in the HSE-Mid Western Area (93%).

Trends

Figure 3 presents the national uptake rates at 24 months for each vaccine from Q1-1999 to Q3-2009. In Q3-2009, compared to the previous quarter, national uptake rates for D₃, P₃, T₃, Polio₃ and MenC₃ were unchanged while Hib₃ and Hib_b increased by 1%.

In Q3-2009, the national MMR₁ uptake rate at 24 months was 91%, an increase of 1% compared to the previous quarter. In Q3-2009, when compared to Q2-2009, the MMR₁ uptake rate was unchanged in the HSE Eastern and Western Areas, decreased in the HSE-Midland Area (by 3%) and North Western Area (by 4%) and increased in the HSE-Mid Western (by 2%), North Eastern (by 1%), South Eastern (by 1%) and Southern (by 1%) Areas.

LHO uptake

Immunisation uptake rates for D₃, P₃, T₃, Hib₃, Hib_b, Polio₃, MenC₃ and MMR₁ in children 24 months of age in Q3-2009 are presented by LHO in Appendix 2.

The immunisation uptake target rate of 95% was reached or exceeded in the Local Health Offices (LHOs) of: Tipperary North/East Limerick and Roscommon for all vaccines i.e. D₃, P₃, T₃, Hib₃, Hib_b, Polio₃, MenC₃ and MMR₁; Cavan/Monaghan for D₃, P₃, T₃, Hib₃, Hib_b, Polio₃ and MenC₃; North/South Lee for D₃, P₃, T₃, Hib₃, Polio₃, MenC₃ and MMR₁; Dublin South, Dublin South East, Dublin North Central, Laois/Offaly, Longford/Westmeath and North Cork for D₃, P₃, T₃, Hib₃, Polio₃ and MenC₃; Dublin South West for D₃, P₃, T₃, Hib₃, Polio₃ and MMR₁; Sligo/Leitrim and Tipperary South for D₃, P₃, T₃, Hib₃ and Polio₃; Dublin South City, Dublin North and Donegal for D₃, P₃, T₃ and Polio₃; Louth for Hib₃ and MenC₃ and Meath for MenC₃.

Sixteen LHOs had ≥95% uptake of D₃, P₃, T₃, and Polio₃. Thirteen LHOs had ≥95% uptake of Hib₃, 12 LHOs had ≥95% uptake of MenC₃, four LHOs had ≥95% uptake of Hib_b and four had ≥95% uptake of MMR₁.

Thirty LHOs had ≥90% uptake of D₃ and T₃. Twenty nine LHOs had ≥90% uptake of P₃, Hib₃, Polio₃ and MenC₃. Twenty one LHOs had ≥90% uptake of MMR₁. Seventeen LHOs had ≥90% uptake of Hib_b.

Table 2. Immunisation uptake (%) at 24 months in cohort born 01/07/2007 – 30/09/2007

| HSE Area | No. in Cohort* | D ₃ | P ₃ | T ₃ | Hib ₃ | Hib _b | Polio ₃ | MenC ₃ | MMR ₁ |
|----------------|----------------|----------------|----------------|----------------|------------------|------------------|--------------------|-------------------|------------------|
| Eastern | 6972 | 93 | 93 | 93 | 93 | 85 | 93 | 92 | 89 |
| Midland | 1342 | 95 | 95 | 95 | 95 | 91 | 95 | 95 | 91 |
| Mid Western | 1583 | 95 | 95 | 95 | 94 | 92 | 95 | 94 | 93 |
| North Eastern | 2037 | 95 | 95 | 95 | 95 | 95 | 95 | 96 | 92 |
| North Western | 986 | 95 | 95 | 95 | 95 | 92 | 95 | 93 | 90 |
| South Eastern | 2051 | 92 | 92 | 92 | 92 | 92 | 92 | 91 | 90 |
| Southern | 2684 | 95 | 95 | 95 | 95 | 89 | 95 | 95 | 92 |
| Western | 1804 | 94 | 94 | 94 | 94 | 87 | 94 | 94 | 90 |
| Ireland | 19459 | 94 | 94 | 94 | 94 | 89 | 94 | 93 | 91 |

* As the denominator/number in cohort varied slightly according to vaccine, most commonly used number is presented here.

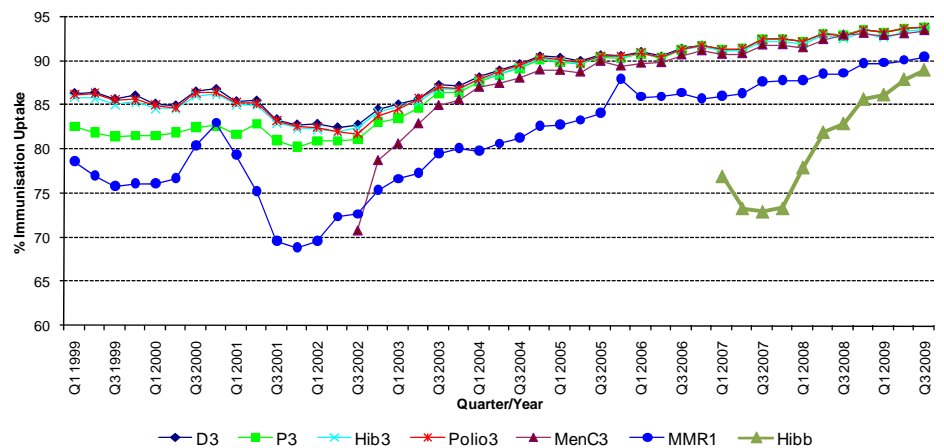


Figure 3. National quarterly immunisation uptake rates at 24 months

Notes: The Q4-2005 MMR₁ figure is based on data from seven of the eight HSE-Areas. The Q1-2006 MMR₁ figure includes the HSE-Eastern Area figure that is an estimate only. The Q1-2007, Q3-2007, Q2-2008 and Q3-2008 Hib_b figures are based on data from seven of the eight HSE Areas. In Q1-2008 the HSE-SE changed their Hib_b data extraction method compared to previous quarters; in Q1-2008 the uptake of Hib_b in the HSE-SE was 83% compared to 53% in Q4-2007. The Q3-2008 MenC₃ figure is based on data from six of the eight HSE Areas. The Q1-2009 HSE-Eastern Area D₃, P₃, T₃, Polio₃ and MMR₁ uptake figures exclude those born on the 31/03/2007. The Q2-2009 HSE-Eastern Area Hib_b uptake figures exclude uptake figures from Dublin North.

Conclusions

In Q3-2009, the national Hib_b, MMR₁ and MenC₃ uptake rates were 89%, 91% and 93%, respectively, below the target uptake rates of 95%. National uptake rates for all other vaccines at 24 months were 1% below the target rates.

Further information

A complete listing of national and regional immunisation uptake statistics at 12 and 24 months for each HSE Area is also available at <http://www.hpsc.ie>.

Acknowledgements

HPSC would like to thank the HSE Areas for providing data and special thanks to the Specialists in Public Health Medicine, Immunisation Co-ordinators, Surveillance Scientists and Systems Analysts for their assistance.

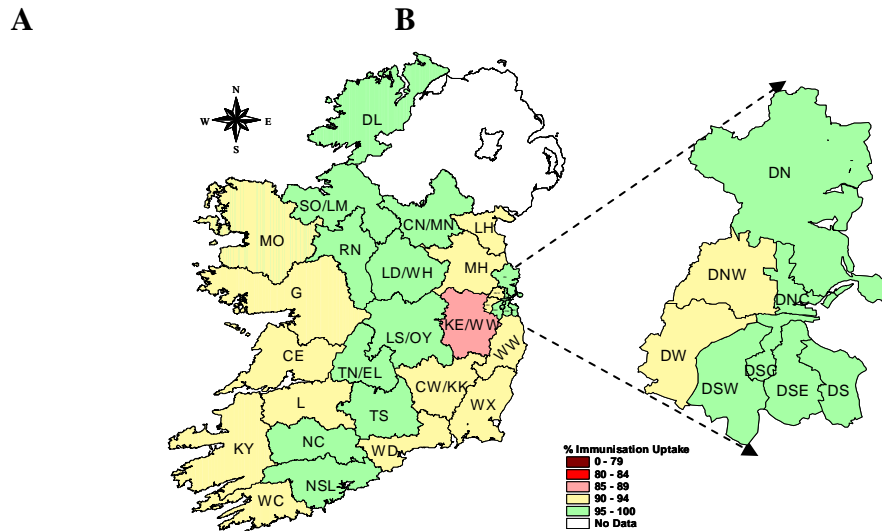


Figure 4. D_3 immunisation uptake rates (%) by LHO, in those 24 months of age in Quarter 3 2009, in (A) Ireland and (B) Dublin. Please see Appendix 3 to translate LHO codes.

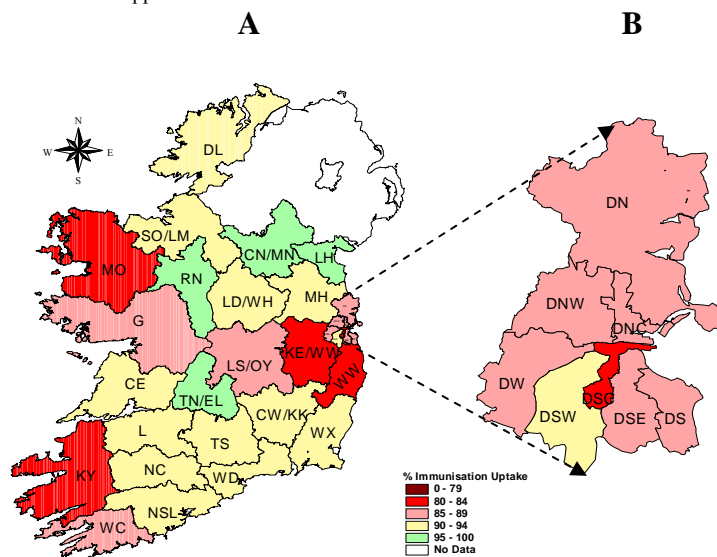


Figure 5. Hib_6 immunisation uptake rates (%) by LHO, in those 24 months of age in Quarter 3 2009, in (A) Ireland and (B) Dublin. Please see Appendix 3 to translate LHO codes.

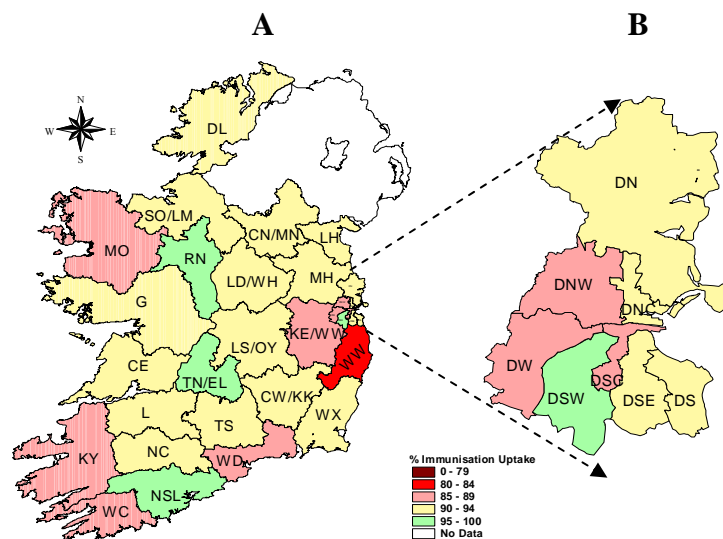


Figure 6. MMR_1 immunisation uptake rates (%) by LHO, in those 24 months of age in Quarter 3 2009, in (A) Ireland and (B) Dublin. Please see Appendix 3 to translate LHO codes.

Appendix 1

| Immunisation Uptake at 12 Months in Cohort Born 01/07/2008-30/09/2008 | | | | | | | | | | | | |
|---|----------------------------|-----------------------|-----------------------------------|---------------------------|----------------|----------------|----------------|------------------|--------------------|-------------------|-------------------|------------------|
| HSE Area | LHO/HSE Area | No. in cohort for BCG | No. in cohort for other vaccines† | Immunisation Uptake (%) * | | | | | | | | |
| | | | | BCG | D ₃ | P ₃ | T ₃ | Hib ₃ | Polio ₃ | HepB ₃ | MenC ₂ | PCV ₂ |
| Eastern‡ | Dublin South | na | 385 | na | 88 | 88 | 88 | 88 | 88 | 88 | na | na |
| | Dublin South East | na | 429 | na | 93 | 93 | 93 | 93 | 93 | 93 | na | na |
| | Dublin South City | na | 456 | na | 92 | 92 | 92 | 92 | 92 | 91 | na | na |
| | Dublin South West | na | 627 | na | 94 | 94 | 94 | 93 | 94 | 92 | na | na |
| | Dublin West | na | 802 | na | 87 | 87 | 87 | 87 | 87 | 86 | na | na |
| | Dublin North West | na | 1050 | na | 86 | 86 | 86 | 86 | 86 | 86 | na | na |
| | Dublin North Central | na | 489 | na | 92 | 92 | 92 | 92 | 92 | 91 | na | na |
| | Dublin North | na | 1152 | na | 90 | 90 | 90 | 90 | 90 | 90 | na | na |
| | Kildare/West Wicklow | na | 1119 | na | 85 | 85 | 85 | 85 | 85 | 84 | na | na |
| | Wicklow | na | 549 | na | 87 | 87 | 87 | 87 | 87 | 87 | na | na |
| HSE-E Total | na | 7058 | na | 89 | 89 | 89 | 89 | 89 | 89 | 88 | na | na |
| Midland | Laois/Offaly | na | na | na | na | na | na | na | na | na | na | na |
| | Longford/Westmeath | na | na | na | na | na | na | na | na | na | na | na |
| | HSE-M Total | na | na | na | na | na | na | na | na | na | na | na |
| Mid Western | Clare | 467 | 466 | 99 | 93 | 93 | 93 | 93 | 93 | 93 | na | 93 |
| | Limerick | 550 | 561 | 97 | 92 | 92 | 92 | 92 | 92 | 92 | na | 91 |
| | Tipperary NR/East Limerick | 527 | 535 | 95 | 91 | 91 | 91 | 91 | 91 | 91 | na | 92 |
| | HSE-MW Total | 1544 | 1562 | 97 | 92 | 92 | 92 | 92 | 92 | 92 | na | 92 |
| | | | | | | | | | | | | |
| North Eastern | Cavan/Monaghan | na | 587 | na | 94 | 94 | 94 | 94 | 94 | 93 | 93 | 89 |
| | Louth | na | 610 | na | 91 | 91 | 91 | 91 | 91 | 91 | 89 | 86 |
| | Meath | na | 995 | na | 91 | 91 | 91 | 91 | 91 | 91 | 91 | 87 |
| | HSE-NE Total | na | 2192 | na | 92 | 92 | 92 | 92 | 92 | 92 | 91 | 87 |
| North Western | Donegal | 618 | 618 | 94 | 92 | 92 | 92 | 93 | 92 | 92 | 91 | 92 |
| | Sligo/Leitrim | 379 | 379 | 97 | 90 | 90 | 90 | 90 | 90 | 89 | 87 | 88 |
| | HSE-NW Total | 997 | 997 | 95 | 91 | 91 | 91 | 92 | 91 | 91 | 90 | 91 |
| South Eastern | Carlow/Kilkenny | 567 | 567 | 96 | 88 | 88 | 88 | 88 | 88 | 88 | 87 | 87 |
| | South Tipperary | 388 | 388 | 95 | 91 | 91 | 91 | 91 | 91 | 90 | 90 | 90 |
| | Waterford | 576 | 576 | 95 | 90 | 90 | 90 | 90 | 90 | 90 | 90 | 90 |
| | Wexford | 669 | 669 | 96 | 92 | 92 | 92 | 92 | 92 | 92 | 92 | 92 |
| | HSE-SE Total | 2200 | 2200 | 95 | 90 | 90 | 90 | 90 | 90 | 90 | 90 | 90 |
| Southern | North Cork | na | na | na | na | na | na | na | na | na | na | na |
| | North South Lee | na | na | na | na | na | na | na | na | na | na | na |
| | West Cork | na | na | na | na | na | na | na | na | na | na | na |
| | Kerry | na | na | na | na | na | na | na | na | na | na | na |
| | HSE-S Total | na | na | na | na | na | na | na | na | na | na | na |
| Western | Galway | na | 1055 | na | 85 | 85 | 85 | 85 | 85 | 85 | 86 | 86 |
| | Mayo | na | 471 | na | 88 | 88 | 88 | 88 | 88 | 87 | 86 | 88 |
| | Roscommon | na | 248 | na | 96 | 96 | 96 | 95 | 96 | 94 | 95 | 95 |
| | HSE-W Total | na | 1774 | na | 87 | 87 | 87 | 87 | 87 | 87 | 87 | 88 |
| Ireland * | | 4741 | 15783 | 96 | 90 | 90 | 90 | 90 | 90 | 89 | 89 | 89 |

na=not available

* HSE-Eastern Area were unable to provide MenC₂ and PCV₂ data; HSE-Midland and Southern Areas were unable to provide data; HSE-Mid Western Area were unable to provide MenC₂ data. BCG uptake data were available for three of the eight HSE-Areas only.

† As the denominator/number in cohort varied slightly according to vaccine, most commonly used number is presented here. Number in national cohort for HepB₃, MenC₂ and PCV₂ is 15785, 7143 and 8711, respectively.

Appendix 2

| Immunisation Uptake at 24 Months in Cohort Born 01/07/2007-30/09/2007 | | | | | | | | | | | |
|---|----------------------------|------------------------------------|-----------------------------------|-------------------------|----------------|----------------|------------------|------------------|--------------------|-------------------|------------------|
| HSE Area | LHO/HSE Area | No. in cohort for Hib _b | No. in cohort for other vaccines* | Immunisation Uptake (%) | | | | | | | |
| | | | | D ₃ | P ₃ | T ₃ | Hib ₃ | Hib _b | Polio ₃ | MenC ₃ | MMR ₁ |
| Eastern† | Dublin South | 428 | 428 | 96 | 96 | 96 | 96 | 88 | 96 | 96 | 94 |
| | Dublin South East | 351 | 351 | 97 | 97 | 97 | 97 | 86 | 97 | 97 | 91 |
| | Dublin South City | 458 | 458 | 95 | 95 | 95 | 94 | 84 | 95 | 93 | 89 |
| | Dublin South West | 655 | 655 | 96 | 96 | 96 | 95 | 90 | 96 | 94 | 95 |
| | Dublin West | 735 | 735 | 93 | 93 | 93 | 93 | 86 | 93 | 92 | 89 |
| | Dublin North West | 947 | 947 | 92 | 92 | 92 | 91 | 87 | 92 | 92 | 87 |
| | Dublin North Central | 438 | 438 | 97 | 97 | 97 | 96 | 87 | 97 | 95 | 91 |
| | Dublin North | 1198 | 1198 | 95 | 95 | 95 | 94 | 88 | 95 | 93 | 92 |
| | Kildare/West Wicklow | 1196 | 1196 | 88 | 88 | 88 | 88 | 81 | 88 | 88 | 85 |
| | Wicklow | 566 | 566 | 91 | 91 | 91 | 91 | 80 | 91 | 90 | 82 |
| | HSE-E Total † | 6972 | 6972 | 93 | 93 | 93 | 93 | 85 | 93 | 92 | 89 |
| Midland | Laos/Offaly | 768 | 775 | 95 | 95 | 95 | 95 | 89 | 95 | 95 | 91 |
| | Longford/Westmeath | 552 | 567 | 95 | 95 | 95 | 95 | 93 | 95 | 95 | 91 |
| | | HSE-M Total | 1320 | 1342 | 95 | 95 | 95 | 95 | 91 | 95 | 95 |
| Mid Western | Clare | 516 | 516 | 94 | 94 | 94 | 94 | 93 | 94 | 94 | 94 |
| | Limerick | 554 | 554 | 94 | 94 | 94 | 94 | 90 | 94 | 94 | 90 |
| | Tipperary NR/East Limerick | 513 | 513 | 96 | 96 | 96 | 96 | 95 | 96 | 95 | 95 |
| | | HSE-MW Total | 1583 | 1583 | 95 | 95 | 95 | 94 | 92 | 95 | 94 |
| North Eastern | Cavan/Monaghan | 564 | 564 | 96 | 96 | 96 | 96 | 95 | 96 | 96 | 93 |
| | Louth | 557 | 557 | 94 | 94 | 94 | 94 | 96 | 94 | 96 | 92 |
| | Meath | 916 | 916 | 94 | 94 | 94 | 94 | 94 | 94 | 96 | 92 |
| | | HSE-NE Total | 2037 | 2037 | 95 | 95 | 95 | 95 | 95 | 95 | 96 |
| North Western | Donegal | 616 | 616 | 95 | 95 | 95 | 94 | 93 | 95 | 93 | 90 |
| | Sligo/Leitrim | 370 | 370 | 95 | 95 | 95 | 96 | 91 | 96 | 92 | 91 |
| | | HSE-NW Total | 986 | 986 | 95 | 95 | 95 | 95 | 92 | 95 | 93 |
| South Eastern | Carlow/Kilkenny | 552 | 552 | 91 | 91 | 91 | 91 | 92 | 91 | 91 | 91 |
| | South Tipperary | 355 | 355 | 95 | 95 | 95 | 95 | 93 | 95 | 94 | 91 |
| | Waterford | 522 | 522 | 90 | 89 | 90 | 89 | 90 | 89 | 89 | 87 |
| | Wexford | 622 | 622 | 93 | 93 | 93 | 93 | 92 | 93 | 93 | 92 |
| | | HSE-SE Total | 2051 | 2051 | 92 | 92 | 92 | 92 | 92 | 92 | 91 |
| Southern | North Cork | 421 | 420 | 96 | 96 | 96 | 96 | 90 | 96 | 96 | 93 |
| | North South Lee | 1498 | 1516 | 97 | 97 | 97 | 97 | 92 | 97 | 97 | 95 |
| | West Cork | 196 | 194 | 91 | 91 | 91 | 91 | 85 | 91 | 90 | 85 |
| | Kerry | 566 | 554 | 92 | 92 | 92 | 92 | 83 | 92 | 91 | 86 |
| | | HSE-S Total | 2681 | 2684 | 95 | 95 | 95 | 95 | 89 | 95 | 95 |
| Western | Galway | 1066 | 1066 | 93 | 93 | 93 | 93 | 87 | 93 | 93 | 90 |
| | Mayo | 505 | 505 | 93 | 93 | 93 | 93 | 84 | 93 | 93 | 89 |
| | Roscommon | 233 | 233 | 98 | 98 | 98 | 97 | 98 | 98 | 98 | 96 |
| | | HSE-W Total | 1804 | 1804 | 94 | 94 | 94 | 94 | 87 | 94 | 94 |
| | Ireland † | 19434 | 19459 | 94 | 94 | 94 | 94 | 89 | 94 | 93 | 91 |

na=not available

*As the denominator/number in cohort varied slightly according to vaccine, most commonly used number is presented here.

Please note while North Lee and South Lee are two separate LHOs their combined immunisation uptake data are reported here.

Appendix 3

| Local Health Office (LHO) Abbreviations (used in maps in this report) | Local Health Office (LHO) |
|--|--------------------------------|
| CE | Clare |
| CN/MN | Cavan/Monaghan |
| CW/KK | Carlow/Kilkenny |
| DL | Donegal |
| DN | Dublin North |
| DNC | Dublin North Central |
| DNW | Dublin North West |
| DS | Dublin South |
| DSC | Dublin South City |
| DSE | Dublin South East |
| DSW | Dublin South West |
| DW | Dublin West |
| G | Galway |
| KE/WW | Kildare/West Wicklow |
| KY | Kerry |
| L | Limerick |
| LD/WD | Longford/Westmeath |
| LH | Louth |
| LS/OY | Laois/Offaly |
| MH | Meath |
| MO | Mayo |
| NC | North Cork |
| NSL* | North South Lee* |
| RN | Roscommon |
| SO/LM | Sligo/Leitrim |
| TN/EL | Tipperary North /East Limerick |
| TS | South Tipperary |
| WC | West Cork |
| WD | Waterford |
| WX | Wexford |
| WW | Wicklow |

*Please note while North Lee and South Lee are two separate LHOs their combined immunisation uptake data are reported here