

Summary

In children 12 months of age in Quarter 2-2009

- ❖ The **national** immunisation uptake rates were 88% for D₃, P₃, T₃, Hib₃ and Polio₃ and 86% for MenC₃. When compared to the previous quarter, uptake of D₃, P₃, T₃, Hib₃ and Polio₃ were unchanged while MenC₃ decreased by 1%.
 - The highest uptake rates for all these vaccines was in the **HSE-Midland Area** (93%). Four HSE Areas had ≥90% uptake of D₃, P₃, T₃, Hib₃, Polio₃ and one had had ≥90% uptake of MenC₃.
 - The immunisation uptake target rate of 95% was reached or exceeded in the **Local Health Offices (LHOs)** of: Dublin South, Dublin South East and Roscommon for D₃, P₃, T₃, Hib₃ and Polio₃; Carlow/Kilkenny, Clare, Limerick, Laois/Offaly, Longford/Westmeath, Sligo/Leitrim, Tipperary NR/East Limerick, Tipperary South, Waterford and Wexford for BCG.
 - Fourteen LHOs had ≥90% uptake of D₃, P₃, T₃, Hib₃ and Polio₃ and five had ≥90% uptake of MenC₃. All twelve LHOs reporting BCG data had ≥90% uptake.

In children 24 months of age in Quarter 2-2009

- ❖ The **national** immunisation uptake rates were 94% for D₃, P₃, T₃ and Polio₃, 93% for Hib₃ and MenC₃ and 88% for Hib_b. When compared to the previous quarter, uptake of D₃, P₃, T₃ and Polio₃ increased by 1%, uptake of Hib₃ and MenC₃ were unchanged and Hib_b uptake increased by 2%.

The national immunisation uptake rate for MMR₁ was 90%, unchanged when compared to the previous quarter.

- All eight **HSE Areas** had ≥90% uptake of D₃, P₃, T₃, Hib₃, Polio₃ and MenC₃. The target uptake rate of 95% was reached or exceeded for D₃, P₃, T₃, Hib₃, Polio₃ and MenC₃ in the **HSE-Midland Area**, for MenC₃ in the HSE-North Eastern Area and for D₃, P₃, T₃, Hib₃ and Polio₃ in the HSE- North Western and Western Areas.

Six HSE Areas had ≥90% uptake of MMR₁ with the highest uptake in the HSE-Midland and North Western Areas (94%).

Four HSE Areas had ≥90% uptake of Hib_b with the target uptake rate of 95% reached in the HSE-Midland Area (95%).

 - The immunisation uptake target rate of 95% was reached or exceeded in the **Local Health Offices (LHOs)** of: Longford/Westmeath and Roscommon for all vaccines i.e. D₃, P₃, T₃, Hib₃, Hib_b, Polio₃, MenC₃ and MMR₁; Laois/Offaly for D₃, P₃, T₃, Hib₃, Hib_b, Polio₃ and MenC₃; Dublin South, Dublin South East, Tipperary NR/East Limerick, Donegal and North South Lee for D₃, P₃, T₃, Hib₃, Polio₃ and MenC₃; Dublin South West and Sligo/Leitrim for D₃, P₃, T₃, Hib₃, Polio₃ and MMR₁; North Cork and Galway for D₃, P₃, T₃, Hib₃ and Polio₃; Cavan/Monaghan for D₃, P₃, T₃, Polio₃ and MenC₃; Tipperary South for D₃, P₃, T₃ and Polio₃; Wexford for D₃, P₃ and T₃.
 - Twenty seven LHOs had ≥90% uptake of D₃, P₃, T₃, Hib₃, Polio₃ and MenC₃
 - Nineteen LHOs had ≥90% uptake of MMR₁
 - Twelve LHOs had ≥90% uptake of Hib_b

Introduction

The immunisation uptake statistics presented in this report relate to children 12 and 24 months of age in Quarter 2-2009 and who have received three doses of vaccines against diphtheria (D₃), pertussis (P₃), tetanus (T₃), *Haemophilus influenzae* type b (Hib₃), polio (Polio₃) and meningococcal group C (MenC₃), one booster dose of vaccine against *Haemophilus influenzae* type b after 12 months of age (Hib_b; uptake at 24 months only), one dose of vaccine against measles, mumps and rubella (MMR₁; uptake at 24 months only) and one dose of BCG vaccine (BCG: uptake at 12 months only). These statistics therefore relate to uptake in the cohorts born between 01/04/2008 & 30/06/2008 and 01/04/2007 & 30/06/2007.

The national immunisation uptake statistics for Quarter 2-2009 are presented in this document, the uptake statistics are also presented by HSE Area and Local Health Office (LHO).

Immunisation uptake at 12 months

National and HSE Area uptake

Immunisation uptake rates in children 12 months of age in Q2-2009 are presented by HSE Area in Table 1. National uptake rates were 88% for D₃, P₃, T₃, Hib₃ and Polio₃ and 86% for MenC₃. The highest uptake rates for these vaccines at 12 months were in the HSE- Midland Area (93%) while the lowest rates for D₃, P₃, T₃, Hib₃ and Polio₃ were in the HSE-Southern Area (85%) and the lowest rate for MenC₃ was in the HSE-Eastern Area (82%). Four HSE Areas had ≥90% uptake of D₃, P₃, T₃, Hib₃, Polio₃ and MenC₃ (table 1). BCG uptake data were available for five of the eight HSE-Areas (data from HSE-Southern Area relates to Kerry only). These areas cover approximately a third of the national birth cohort. Where data were available, national uptake was 96% for the BCG vaccination. This is an increase of 1% compared to Q1-2009 when BCG uptake was 95%.

National & HSE Area trends

Figure 1 presents the national uptake rates at 12 months for each vaccine from Q3-2000 to Q2-2009. In Q2-2009 national uptake rates for D₃, P₃, T₃, Hib₃ and Polio₃ were unchanged compared to the previous quarter while MenC₃ uptake decreased by 1%.

In Q2-2009, D₃, P₃, T₃, Hib₃ and Polio₃ uptake rates, in children 12 months of age, increased in the HSE-Midland (by 1%), Mid Western (by 2%) and North Eastern Areas (by 1%) and decreased in the HSE-North Western (by 2%), South Eastern (by 1%), Southern (by 1%) and Western Areas (by 2%) when compared to the previous quarter. D₃, P₃, T₃ and Polio₃ uptake rates in the HSE Eastern Area were unchanged compared to the previous quarter while Hib₃ uptake increased by 1%. Compared to the previous quarter MenC₃ uptake was unchanged in the HSE-North Eastern Area, increased in the HSE-Midland Area (by 1%) but decreased in the HSE-Mid Western (by 1%), Southern (by 1%), South Eastern (by 2%), Eastern (by 3%), Western (by 4%) and North Western (by 6%) Areas.

LHO uptake

All twelve LHOs reporting BCG data had ≥90% uptake with uptake of ≥95% in ten of these LHOs (appendix 1).

Fourteen LHOs had ≥90% uptake of D₃, P₃, T₃, Hib₃ and Polio₃ with the immunisation uptake target rate of 95% reached for these vaccines in the LHOs of Dublin South, Dublin South East and Roscommon (appendix 1). D₃ immunisation uptake rates are mapped by LHO in figure 2.

Five LHOs had ≥90% uptake of MenC₃, however, the target uptake of 95% was not reached in any of the LHOs (appendix 1).

Internationally

Vaccination coverage statistics for D₃, P₃, T₃, Hib₃ and Polio₃ for children 12 months of age in Quarter 2-2009 were 91.9% in England, 95.8% in Wales, 97.1% in Northern Ireland and 97.3% in Scotland.¹ MenC₂ uptake was 91.3% in England, 95.6% in Wales, 96.9% in Northern Ireland and 97.2% in Scotland.¹ Please see HPA report for caveats to data.¹

Table 1. Immunisation uptake (%) at 12 months in cohort born 01/04/2008–30/06/2008

HSE Area	No. in cohort*	BCG	D ₃	P ₃	T ₃	Hib ₃	Polio ₃	MenC ₃
Eastern	6671	na	86	86	86	86	86	82
Midland	1336	96	93	93	93	93	93	93
Mid Western	1511	97	91	91	91	91	91	88
North Eastern	2052	na	91	91	91	91	91	87
North Western	998	94	92	92	92	92	92	88
South Eastern	2130	97	89	89	89	89	89	87
Southern	2640	94†	85	85	85	85	85	85
Western	1808	na	87	87	87	87	87	85
Ireland	19146‡	96	88	88	88	88	88	86

na = not available at this time

*As the denominator/number in cohort varied slightly according to vaccine, most commonly used number is presented here. †HSE-Southern - part coverage of neonatal BCG (i.e. Kerry only)

‡ Number in cohort for BCG vaccination = 6,503

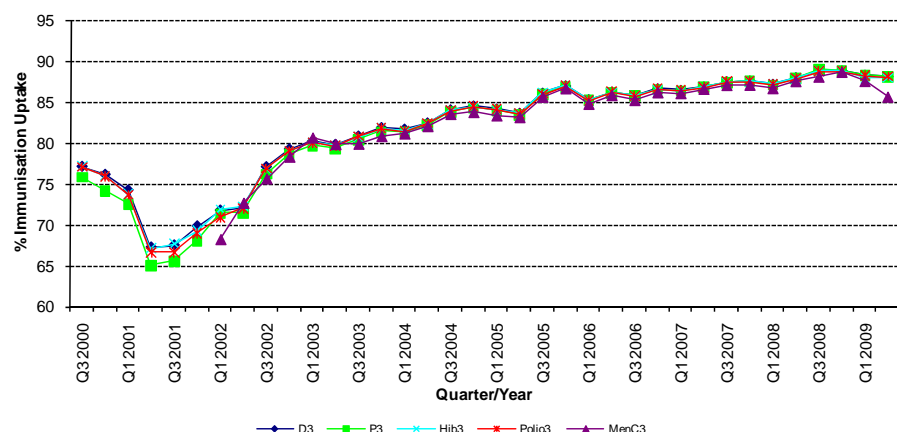


Figure 1. National quarterly immunisation uptake rates at 12 months

Since T₃ uptake identical to D₃ uptake only D₃ uptake figures presented

The Q3 2008 MenC₃ uptake figure is based on data from six of the eight HSE Areas

The Q1-2009 HSE-Eastern Area D₃, P₃, T₃, Polio₃ and MMR₁ uptake figures exclude those born on the 31/03/2007.

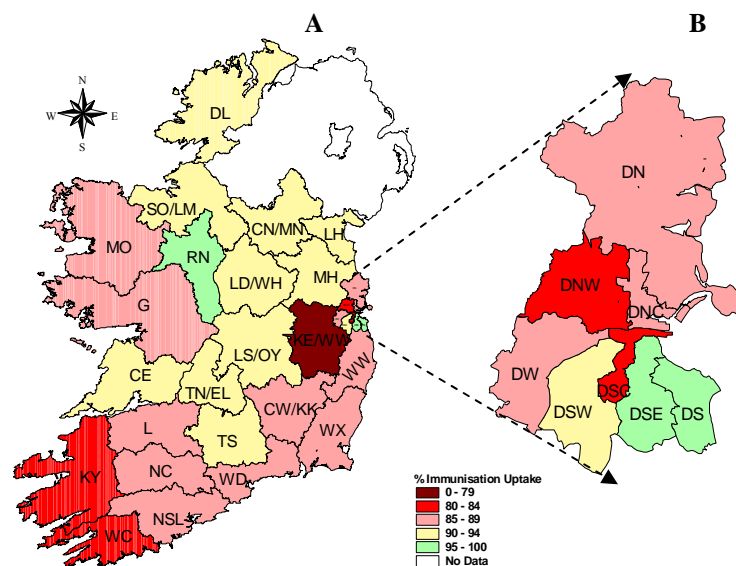


Figure 2. D₃ immunisation uptake rates (%) by LHO, in those 12 months of age in Quarter 2 2009, in (A) Ireland and (B) Dublin. Please see Appendix 3 to translate LHO abbreviations.

Immunisation uptake at 24 months

National and HSE Area uptake

Immunisation uptake rates in children 24 months of age in Q2-2009 are presented (Table 2). National uptake rates were 94% for D₃, P₃, T₃ and Polio₃ and 93% for Hib₃ and MenC₃. All eight HSE Areas had ≥92% uptake of D₃, P₃, T₃, Hib₃, Polio₃ and MenC₃. The target uptake of 95% was reached/exceeded in the HSE-Midland Area for D₃, P₃, T₃, Hib₃, Polio₃ and MenC₃, in the HSE-North Western and Western Areas for D₃, P₃, T₃, Hib₃ and Polio₃ and in the HSE-North Eastern Area for MenC₃. Hib₆ uptake was 88% nationally with ≥90% uptake of Hib₆ in four HSE Areas (table 2); the target uptake rate of 95% was reached for Hib₆ in the HSE-Midland Area. MMR₁ uptake was 90% nationally with uptake of ≥90% in six of the HSE Areas (table 2); the highest uptake rate of MMR₁ was in the HSE-Midland and North Western Areas (94%).

Trends

Figure 3 presents the national uptake rates at 24 months for each vaccine from Q1-1999 to Q2-2009. In Q2-2009, compared to the previous quarter, national uptake rates for Hib₆ increased by 2%, D₃, P₃, T₃ and Polio₃ increased by 1% while Hib₃ and MenC₃ were unchanged. In Q2-2009 uptake rates for D₃, P₃, T₃, Hib₃ and Polio₃ increased by 2% in the HSE Midland Area and by 1% in the HSE Eastern, North Eastern, South Eastern (except Polio₃ increased by 2%) and Western Area. MenC₃ uptake increased by 2% in the HSE Midland Area and by 1% in the HSE North Eastern Area and South Eastern Area. MenC₃ uptake was unchanged in the HSE Eastern and Southern Areas. MenC₃ uptake decreased by 1% in the HSE Mid Western, North Western and Western Areas.

In Q1-2009, the national MMR₁ uptake rate at 24 months was 90%, unchanged compared to the previous quarter.

When compared to Q1-2009 the MMR₁ uptake rate increased by 1% in the HSE Mid Western, North Eastern, North Western and South Eastern Areas and was unchanged in the HSE-Eastern, Midland, Southern and Western Areas.

LHO uptake

Immunisation uptake rates for D₃, P₃, T₃, Hib₃, Hib₆, Polio₃, MenC₃ and MMR₁ in children 24 months of age in Q2-2009 are presented by LHO in Appendix 2.

The immunisation uptake target rate of 95% was reached/exceeded in the LHOs of: Longford/Westmeath and Roscommon for all vaccines i.e. D₃, P₃, T₃, Hib₃, Hib₆, Polio₃, MenC₃ and MMR₁; Laois/Offaly for D₃, P₃, T₃, Hib₃, Hib₆, Polio₃ and MenC₃; Dublin South, Dublin South East, Tipperary NR/East Limerick, Donegal and North South Lee for D₃, P₃, T₃, Hib₃, Polio₃ and MenC₃; Dublin South West and Sligo/Leitrim for D₃, P₃, T₃, Hib₃, Polio₃ and MMR₁; North Cork and Galway for D₃, P₃, T₃, Hib₃ and Polio₃; Cavan/Monaghan for D₃, P₃, T₃, Polio₃ and MenC₃; Tipperary South for D₃, P₃, T₃ and Polio₃ and Wexford for D₃, P₃ and T₃.

Twenty seven LHOs had ≥90% uptake of D₃ (figure 4), P₃, T₃, Hib₃, Polio₃ and MenC₃. Twelve LHOs had ≥90% uptake of Hib₆ (figure 5). Nineteen LHOs had ≥90% uptake of MMR₁ (figure 6).

References

1. COVER programme: April to June 2009. Health Protection Report 2009: 3 (38). Available at: <http://www.hpa.org.uk/hpr/archives/2009/hpr3809.pdf> (accessed 09/10/2009)

Table 2. Immunisation uptake (%) at 24 months in cohort born 01/04/2007 – 30/06/2007

HSE Area	No. in Cohort*	D ₃	P ₃	T ₃	Hib ₃	Hib ₆	Polio ₃	MenC ₃	MMR ₁
Eastern	6358	93	93	93	92	83‡	93	92	89
Midland	993	97	97	97	97	95	97	97	94
Mid Western	1485	93	93	93	93	88	93	92	91
North Eastern	1991	94	94	94	94	91	94	95	91
North Western	943	97	97	97	96	93	97	94	94
South Eastern	2006	93	93	93	92	91	93	92	89
Southern	2521	94	94	94	94	88	94	94	91
Western	1688	95	95	95	95	86	95	93	90
Ireland	17985†	94	94	94	93	88‡	94	93	90

* As the denominator/number in cohort varied slightly according to vaccine, most commonly used number is presented here. † Number in cohort for Hib₆ vaccination = 16,925. ‡ The Q2-2009 HSE-Eastern Area Hib₆ uptake figures exclude uptake figures from Dublin North.

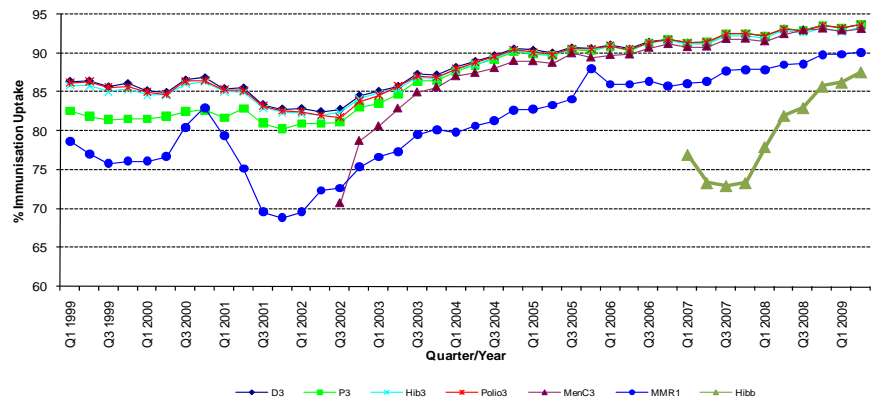


Figure 3. National quarterly immunisation uptake rates at 24 months

Notes: The Q4-2005 MMR₁ figure is based on data from seven of the eight HSE-Areas. The Q1-2006 MMR₁ figure includes the HSE-Eastern Area figure that is an estimate only. The Q1-2007, Q3-2007, Q2-2008 and Q3-2008 Hib₆ figures are based on data from seven of the eight HSE Areas. In Q1-2008 the HSE-SE changed their Hib₆ data extraction method compared to previous quarters; in Q1-2008 the uptake of Hib₆ in the HSE-SE was 83% compared to 53% in Q4-2007. The Q3-2008 MenC₃ figure is based on data from six of the eight HSE Areas. The Q1-2009 HSE-Eastern Area D₃, P₃, T₃, Polio₃ and MMR₁ uptake figures exclude those born on the 31/03/2007. The Q2-2009 HSE-Eastern Area Hib₆ uptake figures exclude uptake figures from Dublin North.

Internationally

In Q2-2009, vaccination coverage statistics at 24 months for D₃, P₃, T₃, Hib₃ and Polio₃ were 94.2% in England, 97.2% in Wales, 98.4% in Northern Ireland and 98.3% in Scotland.¹ Infant MenC uptake was 92.9% in England, 95.7% in Wales, 96.5% in Northern Ireland and 96.3% in Scotland.¹ MMR₁ uptake was 86.3% in England, 90.5% in Wales, 90.6% in Northern Ireland and 93.3% in Scotland.¹ Please see HPA report for caveats to data.¹

Conclusions

In Q2-2009, the national MMR₁ uptake was 5% below the target rate of 95%. The national uptake rate for Hib₆ was 7% below the target rate. National uptake rates for all other vaccines at 24 months were 1-2% below the target rates.

Further information

A complete listing of national and regional immunisation uptake statistics at 12 and 24 months for each HSE Area is also available at <http://www.hpsc.ie>.

Acknowledgements

HPSC would like to thank the HSE Areas for providing data and special thanks to the Specialists in Public Health Medicine, Immunisation Co-ordinators, Surveillance Scientists and Systems Analysts for their assistance.

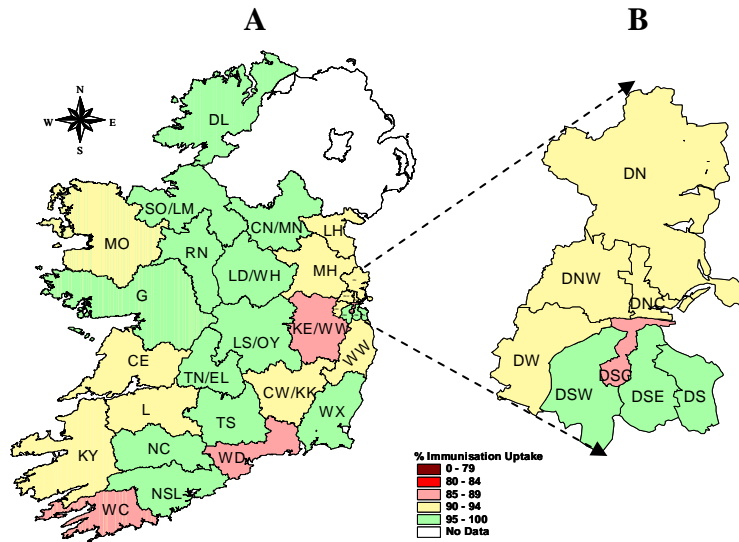


Figure 4. D₃ immunisation uptake rates (%) by LHO, in those 24 months of age in Quarter 2 2009, in (A) Ireland and (B) Dublin. Please see Appendix 3 to translate LHO codes.

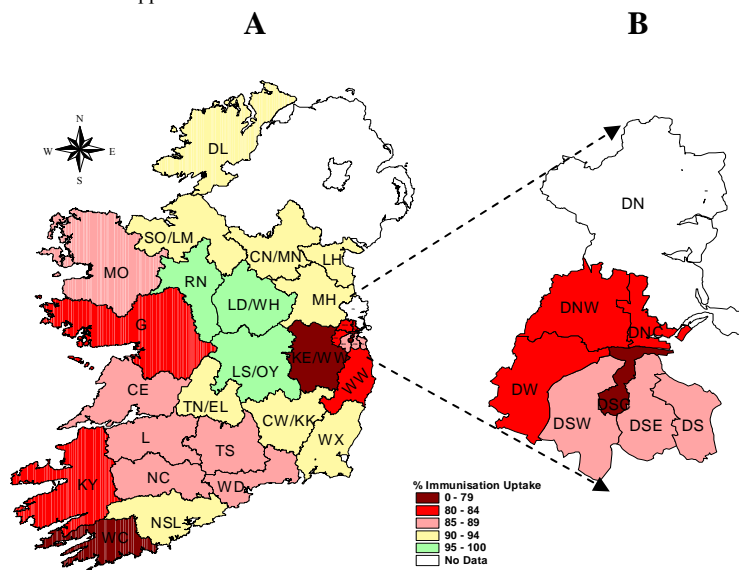


Figure 5. Hib₆ immunisation uptake rates (%) by LHO, in those 24 months of age in Quarter 2 2009, in (A) Ireland and (B) Dublin. Please see Appendix 3 to translate LHO codes.

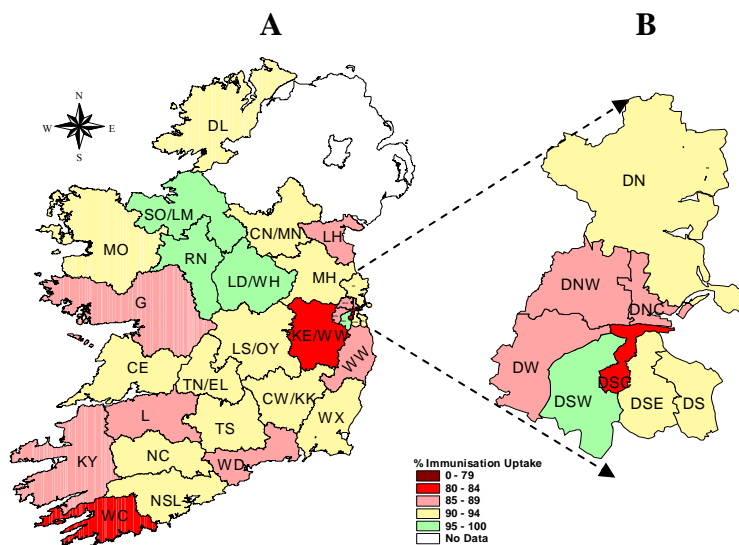


Figure 6. MMR₁ immunisation uptake rates (%) by LHO, in those 24 months of age in Quarter 2 2009, in (A) Ireland and (B) Dublin. Please see Appendix 3 to translate LHO codes.

Appendix 1

Immisation Uptake at 12 Months in Cohort Born 01/04/2008-30/06/2008										
HSE Area	LHO/HSE Area	No. in cohort for BCG	No. in cohort for other vaccines*	Immisation Uptake (%)						
				BCG†	D ₃	P ₃	T ₃	Hib ₃	Polio ₃	MenC ₃
Eastern†	Dublin South	na	411	na	95	95	95	95	95	89
	Dublin South East	na	342	na	95	95	95	95	95	85
	Dublin South City	na	423	na	82	82	82	81	82	77
	Dublin South West	na	690	na	93	93	93	93	93	89
	Dublin West	na	696	na	85	85	85	85	85	81
	Dublin North West	na	995	na	81	81	81	80	81	76
	Dublin North Central	na	415	na	89	89	89	89	89	84
	Dublin North	na	1113	na	89	89	89	89	89	86
	Kildare/West Wicklow	na	1082	na	78	78	78	78	78	77
Wicklow	na	504	na	86	86	86	86	86	84	
HSE-E Total	na	6671	na	86	86	86	86	86	82	
Midland	Laois/Offaly	785	785	96	92	92	92	92	92	92
	Longford/Westmeath	551	551	96	93	93	93	93	93	93
	HSE-M Total	1336	1336	96	93	93	93	93	93	93
Mid Western	Clare	454	446	99	91	91	91	91	91	89
	Limerick	554	538	97	89	89	89	89	89	86
	Tipperary NR/East Limerick	507	527	95	92	92	92	92	92	91
	HSE-MW Total	1515	1511	97	91	91	91	91	91	88
North Eastern	Cavan/Monaghan	na	569	na	90	90	90	91	90	88
	Louth	na	577	na	90	90	90	90	90	86
	Meath	na	906	na	91	91	91	91	91	88
	HSE-NE Total	na	2052	na	91	91	91	91	91	87
North Western	Donegal	642	642	93	92	92	92	92	92	88
	Sligo/Leitrim	356	356	97	92	92	92	91	92	89
	HSE-NW Total	998	998	94	92	92	92	92	92	88
South Eastern	Carlow/Kilkenny	539	539	97	87	87	87	87	87	86
	South Tipperary	365	365	97	92	92	92	92	92	92
	Waterford	587	587	98	88	88	88	88	88	86
	Wexford	639	639	97	89	89	89	89	89	87
	HSE-SE Total	2130	2130	97	89	89	89	89	89	87
Southern	North Cork	na	390	na	86	86	86	86	86	86
	North South Lee	na	1510	na	87	87	87	87	87	87
	West Cork	na	226	na	83	83	83	83	83	82
	Kerry	524	514	94	81	81	81	81	81	81
	HSE-S Total §	524	2640	94	85	85	85	85	85	85
Western	Galway	na	1090	na	86	86	86	86	86	83
	Mayo	na	475	na	88	88	88	88	88	86
	Roscommon	na	243	na	95	95	95	95	95	93
	HSE-W Total	na	1808	na	87	87	87	87	87	85
Ireland †		6503	19146	96	88	88	88	88	88	86

na=not available

* As the denominator/number in cohort varied slightly according to vaccine, most commonly used number is presented here.

† BCG uptake data were available for five of the eight HSE-Areas only (data from HSE-Southern Area relates to Kerry only).

§HSE-Southern Area - part coverage of neonatal BCG (i.e. Kerry only)

Please note while North Lee and South Lee are two separate LHOs their combined immunisation uptake data are reported here

Appendix 2

Immunisation Uptake at 24 Months in Cohort Born 01/04/2007-30/06/2007											
HSE Area	LHO/HSE Area	No. in cohort for Hib ₆	No. in cohort for other vaccines*	Immunisation Uptake (%)							
				D ₃	P ₃	T ₃	Hib ₃	Hib ₆ †	Polio ₃	MenC ₃	MMR ₁
Eastern †	Dublin South	414	414	98	98	98	98	89	98	97	93
	Dublin South East	322	322	96	96	96	96	88	96	97	93
	Dublin South City	430	430	87	87	87	87	76	87	87	82
	Dublin South West	576	576	96	96	96	95	87	96	94	95
	Dublin West	731	731	92	92	92	92	84	92	92	88
	Dublin North West	938	938	92	92	92	92	84	92	92	87
	Dublin North Central	364	364	94	94	94	93	80	94	93	89
	Dublin North	na	1050	94	94	94	94	na	94	93	91
	Kildare/West Wicklow	1060	1060	89	89	89	89	79	89	89	84
Wicklow	473	473	92	92	92	92	83	92	92	88	
HSE-E Total †	5308	6358	93	93	93	92	83	93	92	89	
Midland	Laois/Offaly	664	677	97	97	97	97	95	97	97	94
	Longford/Westmeath	310	316	97	97	97	97	96	97	97	95
	HSE-M Total	974	993	97	97	97	97	95	97	97	94
Mid Western	Clare	462	462	92	92	92	92	88	92	92	90
	Limerick	489	489	91	91	91	91	86	91	90	89
	Tipperary NR/East Limerick	534	534	95	95	95	95	90	95	95	94
	HSE-MW Total	1485	1485	93	93	93	93	88	93	92	91
North Eastern	Cavan/Monaghan	558	558	95	95	95	94	91	95	95	91
	Louth	512	512	93	93	93	93	90	93	94	89
	Meath	921	921	94	94	94	94	91	94	94	91
	HSE-NE Total	1991	1991	94	94	94	94	91	94	95	91
North Western	Donegal	567	567	97	97	97	97	94	97	96	93
	Sligo/Leitrim	376	376	96	96	96	95	93	96	93	95
	HSE-NW Total	943	943	97	97	97	96	93	97	94	94
South Eastern	Carlow/Kilkenny	516	516	93	93	93	93	91	93	92	91
	South Tipperary	360	360	95	95	95	94	89	95	93	91
	Waterford	548	548	89	89	89	89	89	89	89	86
	Wexford	582	582	95	95	95	94	92	94	93	90
	HSE-SE Total	2006	2006	93	93	93	92	91	93	92	89
Southern	North Cork	370	363	95	95	95	95	89	95	94	92
	North South Lee	1459	1470	96	96	96	96	91	96	95	93
	West Cork	189	186	88	88	88	88	78	88	88	81
	Kerry	512	502	91	91	91	91	83	91	90	85
	HSE-S Total	2530	2521	94	94	94	94	88	94	94	91
Western	Galway	1011	1011	96	96	96	96	84	96	92	89
	Mayo	470	470	93	93	93	93	85	93	94	90
	Roscommon	207	207	98	98	98	96	97	98	99	96
	HSE-W Total	1688	1688	95	95	95	95	86	95	93	90
Ireland †	16925	17985	94	94	94	93	88	94	93	90	

na=not available

*As the denominator/number in cohort varied slightly according to vaccine, most commonly used number is presented here.

†Hib₆ uptake figures do not include Hib₆ uptake in HSE-E Dublin North

Please note while North Lee and South Lee are two separate LHOs their combined immunisation uptake data are reported here.

Appendix 3

Local Health Office (LHO) Abbreviations (used in maps in this report)	Local Health Office (LHO)
CE	Clare
CN/MN	Cavan/Monaghan
CW/KK	Carlow/Kilkenny
DL	Donegal
DN	Dublin North
DNC	Dublin North Central
DNW	Dublin North West
DS	Dublin South
DSC	Dublin South City
DSE	Dublin South East
DSW	Dublin South West
DW	Dublin West
G	Galway
KE/WW	Kildare/West Wicklow
KY	Kerry
L	Limerick
LD/WD	Longford/Westmeath
LH	Louth
LS/OY	Laois/Offaly
MH	Meath
MO	Mayo
NC	North Cork
NSL*	North South Lee*
RN	Roscommon
SO/LM	Sligo/Leitrim
TN/EL	Tipperary North /East Limerick
TS	South Tipperary
WC	West Cork
WD	Waterford
WX	Wexford
WW	Wicklow

*Please note while North Lee and South Lee are two separate LHOs their combined immunisation uptake data are reported here