

## Summary

### In children 12 months of age in Quarter 1-2009

- ❖ The **national** immunisation uptake rates were 88% for D<sub>3</sub>, P<sub>3</sub>, T<sub>3</sub>, Hib<sub>3</sub> and Polio<sub>3</sub> and 87% for MenC<sub>3</sub>. When compared to the previous quarter, uptake of D<sub>3</sub>, P<sub>3</sub>, T<sub>3</sub>, Hib<sub>3</sub> and Polio<sub>3</sub> decreased by 1% while MenC<sub>3</sub> decreased by 2%.
- Two **HSE Areas** had ≥90% uptake of D<sub>3</sub>, P<sub>3</sub>, T<sub>3</sub>, Hib<sub>3</sub>, Polio<sub>3</sub> and MenC<sub>3</sub> with the highest uptake in the HSE-North Western Area (94%).
  - The immunisation uptake target rate of 95% was reached or exceeded in the **Local Health Offices** of:  
Roscommon for D<sub>3</sub>, P<sub>3</sub>, T<sub>3</sub>, Hib<sub>3</sub>, Polio<sub>3</sub> and MenC<sub>3</sub>  
Dublin South East for D<sub>3</sub>, P<sub>3</sub>, T<sub>3</sub> and Polio<sub>3</sub>  
Sligo/Leitrim for Polio<sub>3</sub>  
Clare, Limerick, Sligo/Leitrim, Tipperary NR/East Limerick, Waterford and Wexford for BCG.
  - Ten Local Health Offices had ≥90% uptake of D<sub>3</sub>, P<sub>3</sub>, T<sub>3</sub>, Hib<sub>3</sub>, Polio<sub>3</sub> and MenC<sub>3</sub>.  
All twelve Local Health Offices reporting BCG data had ≥90% uptake.

### In children 24 months of age in Quarter 1-2009

- The **national** immunisation uptake rates were 93% for D<sub>3</sub>, P<sub>3</sub>, T<sub>3</sub>, Hib<sub>3</sub>, Polio<sub>3</sub> and MenC<sub>3</sub> and 86% for Hib<sub>6</sub>. When compared to the previous quarter, uptake of D<sub>3</sub>, P<sub>3</sub>, T<sub>3</sub> and Polio<sub>3</sub> decreased by 1% while Hib<sub>3</sub>, MenC<sub>3</sub> and Hib<sub>6</sub> were unchanged.

The national immunisation uptake rate for MMR<sub>1</sub> was 90%, unchanged when compared to the previous quarter.

- All eight **HSE Areas** had ≥91% uptake of D<sub>3</sub>, P<sub>3</sub>, T<sub>3</sub>, Hib<sub>3</sub>, Polio<sub>3</sub> and MenC<sub>3</sub>. The target uptake rate of 95% was reached or exceeded for D<sub>3</sub>, P<sub>3</sub>, T<sub>3</sub>, Hib<sub>3</sub>, Polio<sub>3</sub> and MenC<sub>3</sub> in the **HSE-Midland** and **North Western** Areas.

Six HSE Areas had ≥90% uptake of MMR<sub>1</sub> with the highest uptake in the HSE-Midland Area (94%).

Three HSE Areas had ≥90% uptake of Hib<sub>6</sub> with the highest uptake in the HSE-North Western Area (94%).

- The immunisation uptake target rate of 95% was reached or exceeded in the **Local Health Offices** (LHOs) of:  
Sligo/Leitrim and Roscommon for all vaccines i.e. D<sub>3</sub>, P<sub>3</sub>, T<sub>3</sub>, Hib<sub>3</sub>, Hib<sub>6</sub>, Polio<sub>3</sub>, MenC<sub>3</sub> and MMR<sub>1</sub>  
Dublin South East and Longford/Westmeath for D<sub>3</sub>, P<sub>3</sub>, T<sub>3</sub>, Hib<sub>3</sub>, Polio<sub>3</sub>, MenC<sub>3</sub> and MMR<sub>1</sub>  
Cavan/Monaghan, Donegal, North Cork, NSL and Tipperary NR/East Limerick for D<sub>3</sub>, P<sub>3</sub>, T<sub>3</sub>, Hib<sub>3</sub>, Polio<sub>3</sub> and MenC<sub>3</sub>  
Dublin South for D<sub>3</sub>, P<sub>3</sub>, T<sub>3</sub>, Hib<sub>3</sub>, Polio<sub>3</sub> and MMR<sub>1</sub>  
Dublin South West for D<sub>3</sub>, P<sub>3</sub>, T<sub>3</sub> and Polio<sub>3</sub>
- Twenty six Local Health Offices had ≥90% uptake of D<sub>3</sub>, P<sub>3</sub>, T<sub>3</sub>, Hib<sub>3</sub>, Polio<sub>3</sub> and MenC<sub>3</sub>
- Nineteen Local Health Offices had ≥90% uptake of MMR<sub>1</sub>
- Ten Local Health Offices had ≥90% uptake of Hib<sub>6</sub>

## Introduction

The immunisation uptake statistics presented in this report relate to children 12 and 24 months of age in Quarter 1-2009 and who have received three doses of vaccines against diphtheria (D<sub>3</sub>), pertussis (P<sub>3</sub>), tetanus (T<sub>3</sub>), *Haemophilus influenzae* type b (Hib<sub>3</sub>), polio (Polio<sub>3</sub>) and meningococcal group C (MenC<sub>3</sub>), one booster dose of vaccine against *Haemophilus influenzae* type b after 12 months of age (Hib<sub>6</sub>; uptake at 24 months only), one dose of vaccine against measles, mumps and rubella (MMR<sub>1</sub>; uptake at 24 months only) and one dose of BCG vaccine (BCG; uptake at 12 months only). These statistics therefore relate to uptake in the cohorts born between 01/01/2008 & 31/03/2008 and 01/01/2007 & 31/03/2007.

The national immunisation uptake statistics for Quarter 1-2009 are presented in this document, the uptake statistics are also presented by HSE Area and Local Health Office (LHO).

## Immunisation uptake at 12 months

### National and HSE Area uptake

Immunisation uptake rates in children 12 months of age in Q1-2009 are presented by HSE Area in Table 1. National uptake rates were 88% for D<sub>3</sub>, P<sub>3</sub>, T<sub>3</sub>, Hib<sub>3</sub> and Polio<sub>3</sub> and 87% for MenC<sub>3</sub>. The highest uptake rates for these vaccines at 12 months were in the HSE- North Western (94%) and Midland (92%) Areas while the lowest rates were in the HSE-Eastern (85-86%) and Southern Areas (86%). Two HSE Areas had ≥90% uptake of these vaccines. BCG uptake data were available for five of the eight HSE-Areas (data from HSE-Southern Area relates to Kerry only). These areas cover approximately a third of the national birth cohort. Where data were available, national uptake was 95% for the BCG vaccination. This is an increase of 2% compared to Q4-2008 when BCG uptake was 93%.

### National & HSE Area trends

Figure 1 presents the national uptake rates at 12 months for each vaccine from Q3-2000 to Q1-2009. In Q1-2009 national uptake rates for D<sub>3</sub>, P<sub>3</sub>, T<sub>3</sub>, Hib<sub>3</sub> and Polio<sub>3</sub> decreased by 1% compared to the previous quarter while MenC<sub>3</sub> decreased by 2%. Please note the HSE Eastern Area D<sub>3</sub>, P<sub>3</sub>, T<sub>3</sub> and Polio<sub>3</sub> uptake rates exclude those born on the 31/03/2008.

In Q1-2009, D<sub>3</sub>, P<sub>3</sub>, T<sub>3</sub>, Hib<sub>3</sub>, Polio<sub>3</sub> and MenC<sub>3</sub> uptake rates, in children 12 months of age, decreased by 1-2% in the HSE-Eastern, Midland, Mid-Western and Southern Areas when compared to the previous quarter.

### LHO uptake

All twelve LHOs reporting BCG data had ≥90% uptake. Uptake of BCG was ≥95% in six of these LHOs (Clare, Limerick, Sligo/Leitrim, Tipperary NR/East Limerick, Waterford and Wexford).

Ten LHOs had ≥90% uptake of D<sub>3</sub>, P<sub>3</sub>, T<sub>3</sub>, Hib<sub>3</sub>, Polio<sub>3</sub> and MenC<sub>3</sub>. The immunisation uptake target rate of 95% was reached or exceeded for D<sub>3</sub>, P<sub>3</sub>, T<sub>3</sub>, Hib<sub>3</sub>, Polio<sub>3</sub> and MenC<sub>3</sub> in Roscommon and for D<sub>3</sub>, P<sub>3</sub>, T<sub>3</sub> and Polio<sub>3</sub> in Dublin South East.

D<sub>3</sub> immunisation uptake rates are mapped by LHO in figure 2. Immunisation uptake rates for BCG, D<sub>3</sub>, P<sub>3</sub>, T<sub>3</sub>, Hib<sub>3</sub>, Polio<sub>3</sub> and MenC<sub>3</sub>, in children 12 months of age in Q1-2009, are presented by LHO in Appendix 1.

### Internationally

Vaccination coverage statistics for D<sub>3</sub>, P<sub>3</sub>, T<sub>3</sub>, Hib<sub>3</sub> and Polio<sub>3</sub> for children 12 months of age in Quarter 1-2009 were 91.8% in England, 96.0% in Wales, 97.1% in Northern Ireland and 97.2% in Scotland.<sup>1</sup> MenC<sub>2</sub> uptake was 91.2% in England, 95.7% in Wales, 97.0% in Northern Ireland and 97.1% in Scotland.<sup>1</sup> Please see HPA report for caveats to data.<sup>1</sup>

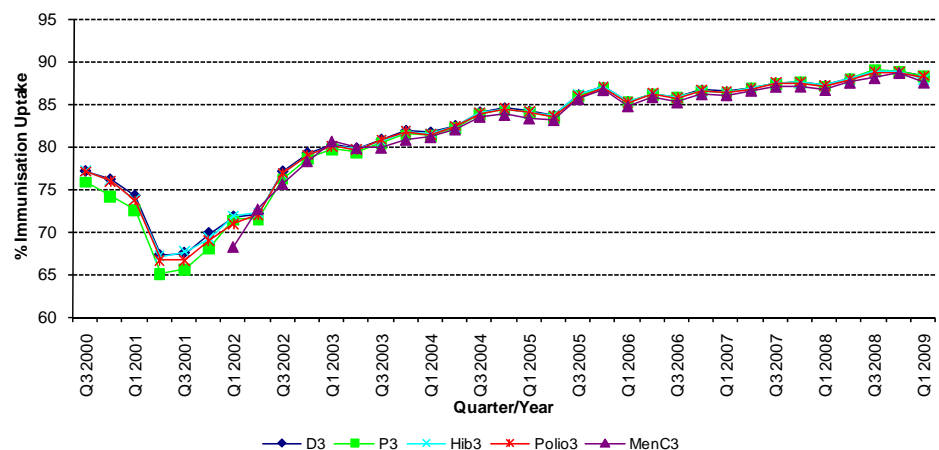
**Table 1.** Immunisation uptake (%) at 12 months in cohort born 01/01/2008–31/03/2008

HSE Area	No. in cohort*	BCG	D <sub>3</sub>	P <sub>3</sub>	T <sub>3</sub>	Hib <sub>3</sub>	Polio <sub>3</sub>	MenC <sub>3</sub>
Eastern†	6238	na	86	86	86	85	86	85
Midland	1239	93	92	92	92	92	92	92
Mid Western	1513	96	89	89	89	89	89	89
North Eastern	1979	na	90	90	90	90	90	87
North Western	974	95	94	94	94	94	94	94
South Eastern	1992	95	90	90	90	90	90	89
Southern	2510	91‡	86	86	86	86	86	86
Western	1770	na	89	89	89	89	89	89
<b>Ireland</b>	<b>18215§</b>	<b>95</b>	<b>88</b>	<b>88</b>	<b>88</b>	<b>88</b>	<b>88</b>	<b>87</b>

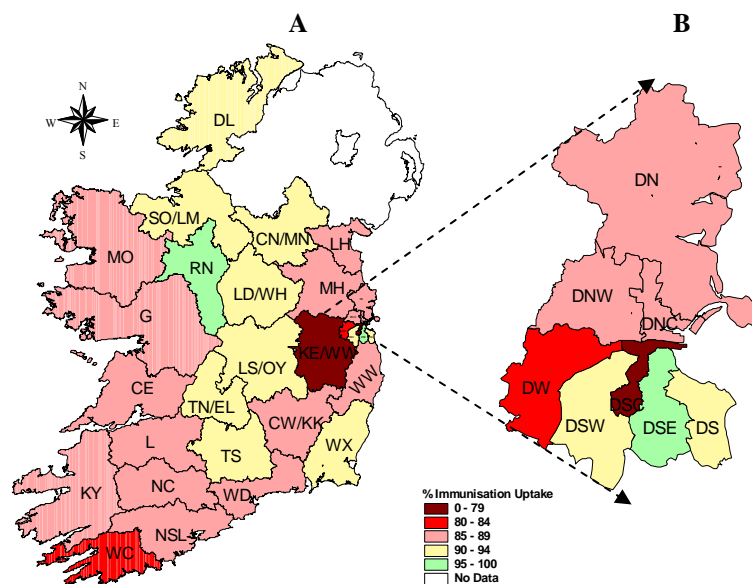
na = not available at this time

\*As the denominator/number in cohort varied slightly according to vaccine, most commonly used number is presented here. †The HSE Eastern Area D<sub>3</sub>, P<sub>3</sub>, T<sub>3</sub> and Polio<sub>3</sub> uptake figures exclude those born on the 31/03/2008. ‡ HSE-Southern - part coverage of neonatal BCG (i.e. Kerry only)

§ Number in cohort for BCG vaccination = 6,221



**Figure 1.** National quarterly immunisation uptake rates at 12 months. Since T<sub>3</sub> uptake identical to D<sub>3</sub> uptake only D<sub>3</sub> uptake figures presented. The Q3 2008 MenC<sub>3</sub> uptake figure is based on data from six of the eight HSE Areas



**Figure 2.** D<sub>3</sub> immunisation uptake rates (%) by LHO, in those 12 months of age in Quarter 1 2009, in (A) Ireland and (B) Dublin. Please see Appendix 3 to translate LHO codes. Note: the HSE Eastern Area D<sub>3</sub> uptake figures excludes those born on the 31/03/2008.

## Immunisation uptake at 24 months

### National and HSE Area uptake

Immunisation uptake rates in children 24 months of age in Q1-2009 are presented (Table 2). National uptake rates were 93% for D<sub>3</sub>, P<sub>3</sub>, T<sub>3</sub>, Hib<sub>3</sub>, Polio<sub>3</sub> and MenC<sub>3</sub>. All eight HSE Areas had ≥91% uptake of D<sub>3</sub>, P<sub>3</sub>, T<sub>3</sub>, Hib<sub>3</sub>, Polio<sub>3</sub> and MenC<sub>3</sub> with the target uptake of 95% reached/exceeded in the HSE-Midland and North Western Areas. Hib<sub>b</sub> uptake was 86% nationally with ≥90% uptake of Hib<sub>b</sub> in three HSE Areas (table 2); the highest uptake rate of Hib<sub>b</sub> was in the HSE-North Western Area (94%). MMR<sub>1</sub> uptake was 90% nationally with uptake of ≥90% in six of the HSE Areas (table 2); the highest uptake rate of MMR<sub>1</sub> was in the HSE-Midland Area (94%).

### Trends-D<sub>3</sub>, P<sub>3</sub>, T<sub>3</sub>, Hib<sub>3</sub>, Polio<sub>3</sub> & MenC<sub>3</sub>

Figure 3 presents the national uptake rates at 24 months for each vaccine from Q1-1999 to Q1-2009. National uptake rates for D<sub>3</sub>, P<sub>3</sub>, T<sub>3</sub> and Polio<sub>3</sub> decreased by 1% compared to the previous quarter while Hib<sub>3</sub>, MenC<sub>3</sub> and Hib<sub>b</sub> were unchanged. In Q1-2009 uptake rates for D<sub>3</sub>, P<sub>3</sub>, T<sub>3</sub> and Polio<sub>3</sub> decreased in the HSE Eastern and North Eastern Areas (by 1%), and in the HSE Midland Areas (by 2%). Please note the HSE Eastern Area D<sub>3</sub>, P<sub>3</sub>, T<sub>3</sub>, Polio<sub>3</sub> and MMR<sub>1</sub> uptake rates exclude those born on the 31/03/2007.

### Trends-MMR<sub>1</sub>

In Q1-2009, the national MMR<sub>1</sub> uptake rate at 24 months was 90%, unchanged compared to the previous quarter.

When compared to Q4-2008 the MMR<sub>1</sub> uptake rate was unchanged in the HSE-Mid Western and Western Areas, increased by 1% in the HSE Eastern, Midland, North Western and Southern Areas and decreased by 1% in the HSE North Eastern and South Eastern Areas.

### LHO uptake

The immunisation uptake target rate of 95% was reached/exceeded in the LHOs of Sligo/Leitrim and Roscommon for all vaccines i.e. D<sub>3</sub>, P<sub>3</sub>, T<sub>3</sub>, Hib<sub>3</sub>, Hib<sub>b</sub>, Polio<sub>3</sub>, MenC<sub>3</sub> and MMR<sub>1</sub>, in Dublin South East and Longford/Westmeath for D<sub>3</sub>, P<sub>3</sub>, T<sub>3</sub>, Hib<sub>3</sub>, Polio<sub>3</sub>, MenC<sub>3</sub> and MMR<sub>1</sub>, in Cavan/Monaghan, Donegal, North Cork, NSL and Tipperary NR/East Limerick for D<sub>3</sub>, P<sub>3</sub>, T<sub>3</sub>, Hib<sub>3</sub>, Polio<sub>3</sub> and MenC<sub>3</sub>, in Dublin South for D<sub>3</sub>, P<sub>3</sub>, T<sub>3</sub>, Hib<sub>3</sub>, Polio<sub>3</sub> and MMR<sub>1</sub> and in Dublin South West for D<sub>3</sub>, P<sub>3</sub>, T<sub>3</sub> and Polio<sub>3</sub>.

Twenty six Local Health Offices had ≥90% uptake of D<sub>3</sub>, P<sub>3</sub>, T<sub>3</sub>, Hib<sub>3</sub>, Polio<sub>3</sub> and MenC<sub>3</sub>. Nineteen Local Health Offices had ≥90% uptake of MMR<sub>1</sub>. Ten Local Health Offices had ≥90% uptake of Hib<sub>b</sub>.

D<sub>3</sub>, Hib<sub>b</sub> and MMR<sub>1</sub> immunisation uptake rates are mapped by LHO in figures 4-6. Immunisation uptake rates for D<sub>3</sub>, P<sub>3</sub>, T<sub>3</sub>, Hib<sub>3</sub>, Hib<sub>b</sub>, Polio<sub>3</sub>, MenC<sub>3</sub> and MMR<sub>1</sub> in children 24 months of age in Q1-2009 are presented by LHO in Appendix 2.

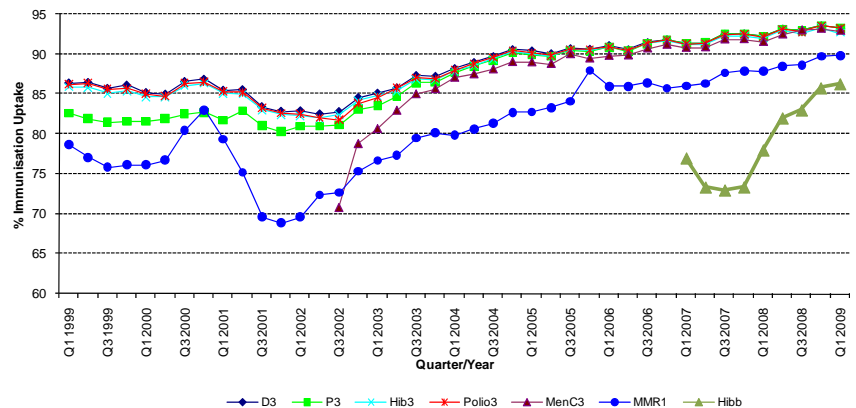
## References

1. COVER programme: January to March 2009. Health Protection Report 2009: 3 (25). Available at: <http://www.hpa.org.uk/hpr/archives/2009/hpr2509.pdf> (accessed 01/07/2009)

**Table 2.** Immunisation uptake (%) at 24 months in cohort born 01/01/2007 – 31/03/2007

HSE Area	No. in Cohort*	D <sub>3</sub>	P <sub>3</sub>	T <sub>3</sub>	Hib <sub>3</sub>	Hib <sub>b</sub>	Polio <sub>3</sub>	MenC <sub>3</sub>	MMR <sub>1</sub>
Eastern†	5798‡	92	92	92	91	81	92	91	89
Midland	1089	95	95	95	95	93	95	95	94
Mid Western	1425	93	93	93	93	86	93	93	90
North Eastern	1776	93	93	93	93	90	93	94	90
North Western	925	96	96	96	96	94	96	95	93
South Eastern	1878	92	92	92	91	89	91	91	89
Southern	2404	94	94	94	94	88	94	94	91
Western	1499	94	94	94	94	86	94	94	90
<b>Ireland</b>	<b>16794‡</b>	<b>93</b>	<b>93</b>	<b>93</b>	<b>93</b>	<b>86</b>	<b>93</b>	<b>93</b>	<b>90</b>

\* As the denominator/number in cohort varied slightly according to vaccine, most commonly used number is presented here. †The HSE Eastern Area D<sub>3</sub>, P<sub>3</sub>, T<sub>3</sub>, Polio<sub>3</sub> and MMR<sub>1</sub> uptake figures exclude those born on the 31/03/2007. ‡Number in cohort for Hib<sub>b</sub> vaccination = 16,819.



**Figure 3.** National quarterly immunisation uptake rates at 24 months

**Notes:** The Q4-2005 MMR<sub>1</sub> figure is based on data from seven of the eight HSE-Areas. The Q1-2006 MMR<sub>1</sub> figure includes the HSE-Eastern Area figure that is an estimate only. The Q1-2007, Q3-2007, Q2-2008 and Q3-2008 Hib<sub>b</sub> figures are based on data from seven of the eight HSE Areas. In Q1-2008 the HSE-SE changed their Hib<sub>b</sub> data extraction method compared to previous quarters; in Q1-2008 the uptake of Hib<sub>b</sub> in the HSE-SE was 83% compared to 53% in Q4-2007. The Q3-2008 MenC<sub>3</sub> figure is based on data from six of the eight HSE Areas. The Q1-2009 HSE-Eastern Area D<sub>3</sub>, P<sub>3</sub>, T<sub>3</sub>, Polio<sub>3</sub> and MMR<sub>1</sub> uptake figures exclude those born on the 31/03/2007.

### Internationally

In Q1-2009, vaccination coverage statistics at 24 months for D<sub>3</sub>, P<sub>3</sub>, T<sub>3</sub>, Hib<sub>3</sub> and Polio<sub>3</sub> were 94.1% in England, 97.3% in Wales, 98.2% in Northern Ireland and 98.0% in Scotland.<sup>1</sup> Infant MenC uptake was 92.7% in England, 95.9% in Wales, 95.9% in Northern Ireland and 96.1% in Scotland.<sup>1</sup> MMR<sub>1</sub> uptake was 85.6% in England, 89.6% in Wales, 90.8% in Northern Ireland and 92.9% in Scotland.<sup>1</sup> Please see HPA report for caveats to data.<sup>1</sup>

### Conclusions

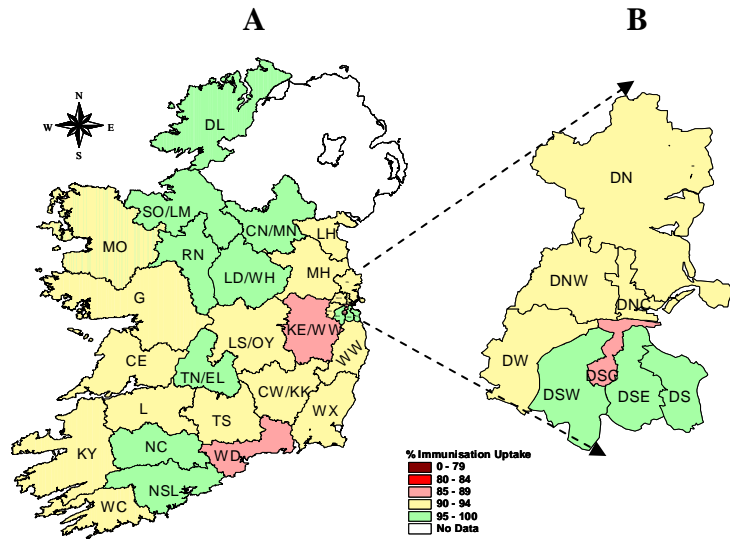
In Q1-2009, the national MMR<sub>1</sub> uptake was 5% below the target rate of 95%. The uptake rate for Hib<sub>b</sub> was 9% below the target rate. Uptake rates for all other vaccines at 24 months were 2% below the target rates.

### Further information

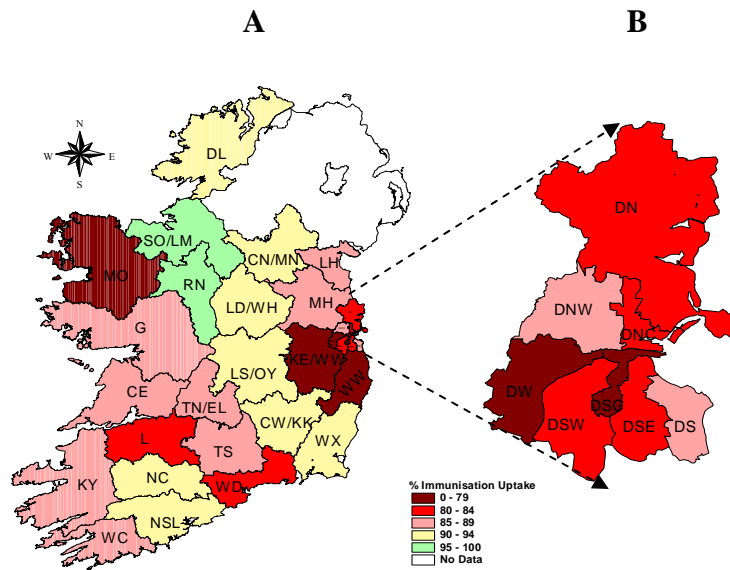
A complete listing of national and regional immunisation uptake statistics at 12 and 24 months for each HSE Area is also available at <http://www.hpsc.ie>.

### Acknowledgements

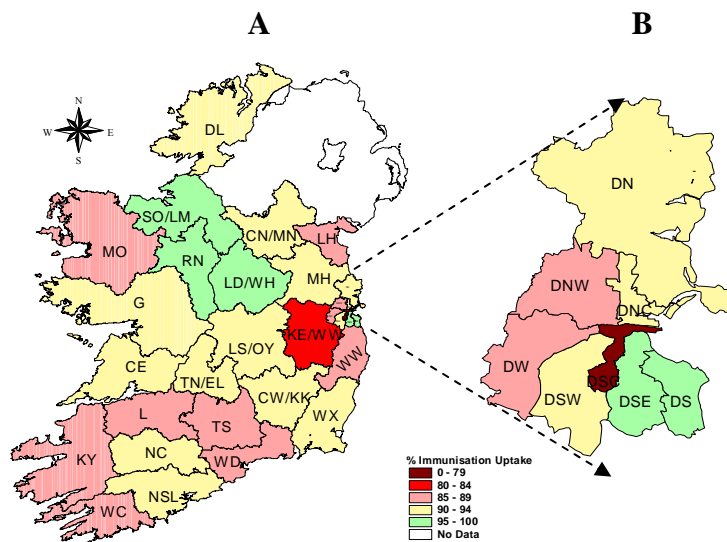
HPSC would like to thank the HSE Areas for providing data and special thanks to the Specialists in Public Health Medicine, Immunisation Co-ordinators, Surveillance Scientists and Systems Analysts for their assistance.



**Figure 4.** D<sub>3</sub> immunisation uptake rates (%) by LHO, in those 24 months of age in Quarter 1 2009, in (A) Ireland and (B) Dublin. Please see Appendix 3 to translate LHO codes. Note: the HSE Eastern Area D<sub>3</sub> uptake figures exclude those born on the 31/03/2007.



**Figure 5.** Hib<sub>6</sub> immunisation uptake rates (%) by LHO, in those 24 months of age in Quarter 1 2009, in (A) Ireland and (B) Dublin. Please see Appendix 3 to translate LHO codes. Note: the HSE Eastern Area Hib<sub>6</sub> uptake figures exclude those born on the 31/03/2007.



**Figure 6.** MMR<sub>1</sub> immunisation uptake rates (%) by LHO, in those 24 months of age in Quarter 1 2009, in (A) Ireland and (B) Dublin. Please see Appendix 3 to translate LHO codes. Note: the HSE Eastern Area MMR<sub>1</sub> uptake figures exclude those born on the 31/03/2007.

## Appendix 1

Immunisation Uptake at 12 Months in Cohort Born 01/01/2008-31/03/2008										
HSE Area	LHO/HSE Area	No. in cohort for BCG	No. in cohort for other vaccines†	Immunisation Uptake (%)						
				BCG†	D <sub>3</sub>	P <sub>3</sub>	T <sub>3</sub>	Hib <sub>3</sub>	Polio <sub>3</sub>	MenC <sub>3</sub>
Eastern‡	Dublin South	na	365	na	92	92	92	90	92	90
	Dublin South East	na	335	na	95	95	95	94	95	93
	Dublin South City	na	418	na	76	76	76	75	76	74
	Dublin South West	na	632	na	93	93	93	92	93	90
	Dublin West	na	653	na	84	84	84	82	84	82
	Dublin North West	na	896	na	86	86	86	85	86	86
	Dublin North Central	na	370	na	88	88	88	88	88	87
	Dublin North	na	1004	na	89	89	89	88	89	89
	Kildare/West Wicklow	na	1074	na	77	77	77	77	77	77
	Wicklow	na	491	na	88	88	88	87	88	87
	<b>HSE-E Total</b>	<b>na</b>	<b>6238</b>	<b>na</b>	<b>86</b>	<b>86</b>	<b>86</b>	<b>85</b>	<b>86</b>	<b>85</b>
Midland	Laois/Offaly	681	681	93	91	91	91	91	91	91
	Longford/Westmeath	558	558	93	94	94	94	94	94	94
		<b>HSE-M Total</b>	<b>1239</b>	<b>1239</b>	<b>93</b>	<b>92</b>	<b>92</b>	<b>92</b>	<b>92</b>	<b>92</b>
Mid Western	Clare	458	466	96	89	89	89	89	89	89
	Limerick	531	507	95	89	89	89	89	89	89
	Tipperary NR/East Limerick	512	540	96	90	90	90	90	90	90
		<b>HSE-MW Total</b>	<b>1501</b>	<b>1513</b>	<b>96</b>	<b>89</b>	<b>89</b>	<b>89</b>	<b>89</b>	<b>89</b>
North Eastern	Cavan/Monaghan	na	568	na	93	93	93	93	93	88
	Louth	na	527	na	89	89	89	89	89	88
	Meath	na	884	na	88	88	88	88	88	86
		<b>HSE-NE Total</b>	<b>na</b>	<b>1979</b>	<b>na</b>	<b>90</b>	<b>90</b>	<b>90</b>	<b>90</b>	<b>90</b>
North Western	Donegal	603	603	94	94	94	94	94	94	94
	Sligo/Leitrim	371	371	97	94	94	94	94	95	93
		<b>HSE-NW Total</b>	<b>974</b>	<b>974</b>	<b>95</b>	<b>94</b>	<b>94</b>	<b>94</b>	<b>94</b>	<b>94</b>
South Eastern	Carlow/Kilkenny	517	517	94	88	88	88	88	88	88
	South Tipperary	341	341	93	90	90	90	90	90	89
	Waterford	527	527	97	89	89	89	89	89	89
	Wexford	607	607	96	91	91	91	91	91	90
		<b>HSE-SE Total</b>	<b>1992</b>	<b>1992</b>	<b>95</b>	<b>90</b>	<b>90</b>	<b>90</b>	<b>90</b>	<b>90</b>
Southern	North Cork	na	373	na	88	88	88	88	88	88
	North South Lee	na	1442	na	87	87	87	87	87	87
	West Cork	na	180	na	82	82	82	82	82	82
	Kerry	515	515	91	85	85	85	85	85	84
		<b>HSE-S Total §</b>	<b>515</b>	<b>2510</b>	<b>91</b>	<b>86</b>	<b>86</b>	<b>86</b>	<b>86</b>	<b>86</b>
Western	Galway	na	1042	na	88	88	88	88	88	87
	Mayo	na	470	na	89	89	89	89	89	88
	Roscommon	na	258	na	95	95	95	95	95	95
		<b>HSE-W Total</b>	<b>na</b>	<b>1770</b>	<b>na</b>	<b>89</b>	<b>89</b>	<b>89</b>	<b>89</b>	<b>89</b>
	<b>Ireland †</b>	<b>6221</b>	<b>18215</b>	<b>95</b>	<b>88</b>	<b>88</b>	<b>88</b>	<b>88</b>	<b>88</b>	<b>87</b>

na=not available

\* As the denominator/number in cohort varied slightly according to vaccine, most commonly used number is presented here.

† BCG uptake data were available for five of the eight HSE-Areas only (data from HSE-Southern Area relates to Kerry only).

‡Q1 2009 HSE-Eastern Area D<sub>3</sub>, T<sub>3</sub>, P<sub>3</sub> and Polio<sub>3</sub> uptake stats do not include those born on the 31/03/2008

§HSE-Southern Area - part coverage of neonatal BCG (i.e. Kerry only)

Please note while North Lee and South Lee are two separate LHOs their combined immunisation uptake data are reported here

## Appendix 2

Immunisation Uptake at 24 Months in Cohort Born 01/01/2007-31/03/2007											
HSE Area	LHO/HSE Area	No. in cohort for Hib <sub>b</sub>	No. in cohort for other vaccines *	Immunisation Uptake (%)							
				D <sub>3</sub>	P <sub>3</sub>	T <sub>3</sub>	Hib <sub>3</sub>	Hib <sub>b</sub>	Polio <sub>3</sub>	MenC <sub>3</sub>	MMR <sub>1</sub>
Eastern†	Dublin South	377	373	96	96	96	95	86	96	94	95
	Dublin South East	335	332	98	98	98	97	84	98	98	95
	Dublin South City	341	336	85	85	85	83	68	85	85	76
	Dublin South West	594	591	95	95	95	94	82	95	93	94
	Dublin West	601	594	91	91	91	89	77	91	90	87
	Dublin North West	821	816	93	93	93	92	85	93	93	88
	Dublin North Central	366	366	94	94	94	93	81	94	92	91
	Dublin North	962	950	93	93	93	92	83	93	93	91
	Kildare/West Wicklow	969	964	88	88	88	88	79	88	88	84
	Wicklow	482	476	91	91	91	90	79	91	91	85
	<b>HSE-E Total</b>	<b>5848</b>	<b>5798</b>	<b>92</b>	<b>92</b>	<b>92</b>	<b>91</b>	<b>81</b>	<b>92</b>	<b>92</b>	<b>89</b>
Midland	Laois/Offaly	614	622	94	94	94	94	93	94	94	94
	Longford/Westmeath	458	467	98	98	98	98	94	98	98	95
		<b>HSE-M Total</b>	<b>1072</b>	<b>1089</b>	<b>95</b>	<b>95</b>	<b>95</b>	<b>95</b>	<b>93</b>	<b>95</b>	<b>95</b>
Mid Western	Clare	449	449	93	93	93	93	86	93	93	91
	Limerick	494	494	91	91	91	90	84	91	91	87
	Tipperary NR/East Limerick	482	482	96	96	96	95	88	96	95	92
		<b>HSE-MW Total</b>	<b>1425</b>	<b>1425</b>	<b>93</b>	<b>93</b>	<b>93</b>	<b>93</b>	<b>86</b>	<b>93</b>	<b>93</b>
North Eastern	Cavan/Monaghan	472	472	95	95	95	95	92	95	95	90
	Louth	481	481	92	92	92	92	88	92	94	89
	Meath	823	823	93	93	93	93	89	93	94	91
		<b>HSE-NE Total</b>	<b>1776</b>	<b>1776</b>	<b>93</b>	<b>93</b>	<b>93</b>	<b>93</b>	<b>90</b>	<b>93</b>	<b>94</b>
North Western	Donegal	548	548	95	95	95	95	93	95	95	92
	Sligo/Leitrim	377	377	98	98	98	97	95	98	95	95
		<b>HSE-NW Total</b>	<b>925</b>	<b>925</b>	<b>96</b>	<b>96</b>	<b>96</b>	<b>96</b>	<b>94</b>	<b>96</b>	<b>95</b>
South Eastern	Carlow/Kilkenny	476	476	92	92	92	92	92	92	92	91
	South Tipperary	367	367	91	91	91	89	89	90	89	87
	Waterford‡	490	490	89	89	89	89	82	89	89	85
	Wexford	545	545	93	93	93	93	93	93	92	90
		<b>HSE-SE Total</b>	<b>1878</b>	<b>1878</b>	<b>92</b>	<b>92</b>	<b>92</b>	<b>91</b>	<b>89</b>	<b>91</b>	<b>91</b>
Southern	North Cork	338	333	96	96	96	96	91	96	97	92
	North South Lee	1355	1377	95	95	95	95	90	95	95	92
	West Cork	188	189	90	90	90	90	86	90	91	86
	Kerry	515	505	91	91	91	91	85	91	91	87
		<b>HSE-S Total</b>	<b>2396</b>	<b>2404</b>	<b>94</b>	<b>94</b>	<b>94</b>	<b>94</b>	<b>88</b>	<b>94</b>	<b>94</b>
Western	Galway	868	868	93	93	93	93	87	93	94	90
	Mayo	433	433	93	93	93	93	78	93	93	86
	Roscommon	198	198	99	99	99	99	98	99	99	98
		<b>HSE-W Total</b>	<b>1499</b>	<b>1499</b>	<b>94</b>	<b>94</b>	<b>94</b>	<b>94</b>	<b>86</b>	<b>94</b>	<b>94</b>
	<b>Ireland</b>	<b>16819</b>	<b>16794</b>	<b>93</b>	<b>93</b>	<b>93</b>	<b>93</b>	<b>86</b>	<b>93</b>	<b>93</b>	<b>90</b>

na=not available

\*As the denominator/number in cohort varied slightly according to vaccine, most commonly used number is presented here.

†Q1 2009 HSE-Eastern Area D<sub>3</sub>, T<sub>3</sub>, P<sub>3</sub>, Polio<sub>3</sub> and MMR<sub>1</sub> uptake stats do not include those born on the 31/03/2007

‡Q1 2009 Waterford Hib<sub>b</sub> figure may be low as personnel were required to work on MMR campaign

Please note while North Lee and South Lee are two separate LHOs their combined immunisation uptake data are reported here.



### Appendix 3

Local Health Office (LHO) Codes (used in the maps in this report)	Local Health Office (LHO)
CE	Clare
CN/MN	Cavan/Monaghan
CW/KK	Carlow/Kilkenny
DL	Donegal
DN	Dublin North
DNC	Dublin North Central
DNW	Dublin North West
DS	Dublin South
DSC	Dublin South City
DSE	Dublin South East
DSW	Dublin South West
DW	Dublin West
G	Galway
KE/WW	Kildare/West Wicklow
KY	Kerry
L	Limerick
LD/WD	Longford/Westmeath
LH	Louth
LS/OY	Laois/Offaly
MH	Meath
MO	Mayo
NC	North Cork
NSL*	North South Lee*
RN	Roscommon
SO/LM	Sligo/Leitrim
TN/EL	Tipperary North /East Limerick
TS	South Tipperary
WC	West Cork
WD	Waterford
WX	Wexford
WW	Wicklow

\*Please note while North Lee and South Lee are two separate LHOs their combined immunisation uptake data are reported here