

Summary

In Quarter 4-2006, national immunisation uptake rates for D₃, P₃, T₃, Polio₃ and MenC₃, in children 12 months of age, increased by 1% compared to Q3-2006. Hib₃ uptake remained unchanged while BCG uptake increased by 2% compared to the previous quarter. Uptake rates in Q4-2006 were 87% for D₃, P₃, T₃ and Polio₃, 86% for Hib₃ and MenC₃ and 94% for BCG.

National immunisation uptake rates for D₃, P₃, T₃, Hib₃ and Polio₃, in children 24 months of age, increased by 1% when compared with the previous quarter while MenC₃ uptake remained unchanged. Uptake rates at 24 months, in Q4-2006, for D₃, P₃, T₃, Hib₃ and Polio₃ were 92% while MenC₃ uptake was 91%.

In Q4-2006, the national immunisation uptake rate at 24 months for MMR₁ was 86%, unchanged from Q3-2006.

Trends at 12 months

Figure 1 presents the national uptake rates at 12 months for each vaccine from Q3-2000 to Q4-2006. In Q4-2006 national uptake rates for D₃, P₃, T₃, Polio₃ and MenC₃ increased by 1% when compared to the previous quarter. Hib₃ uptake remained unchanged compared to Q3-2006.

The HSE-North Western Area reported increases of 1-3% in uptake rates for D₃, P₃, T₃, Hib₃, Polio₃ and MenC₃ at 12 months compared to Q3-2006. The HSE-South Eastern Area reported an increase of 2% in uptake rates for all antigens (except BCG) at 12 months compared to the previous quarter.

Internationally

Vaccination coverage statistics for children 12 months of age in Quarter 4-2006 were 94-96% in Wales (provisional), 96% in Northern Ireland and 96-98% in Scotland.¹

Introduction

The immunisation uptake statistics presented in this report relate to children 12 and 24 months of age in Quarter 4-2006 and who have received three doses of vaccines against diphtheria (D₃), pertussis (P₃), tetanus (T₃), *Haemophilus influenzae* type b (Hib₃), polio (Polio₃), meningococcal group C (MenC₃), one dose of vaccine against measles, mumps and rubella (MMR₁; uptake at 24 months only) and one dose of BCG vaccine (BCG; uptake at 12 months only). These statistics therefore relate to uptake in the cohorts born between 01/10/2005 & 31/12/2005 and 01/10/2004 & 31/12/2004.

Immunisation uptake at 12 months

Immunisation uptake rates in children 12 months of age in Q4-2006 are presented (Table 1). National uptake rates for D₃, P₃, T₃ and Polio₃ were 87%. The national uptake rates for Hib₃ and MenC₃ were 86%. In Q4-2006 the highest uptake rates for these vaccines at 12 months were in the HSE-North Western Area (92-94%) while the lowest rates were in the HSE-Eastern Area (83%). BCG uptake data were available for five of the eight HSE-Areas (data from HSE-Southern Area relates to Kerry CCA only). These areas cover only a third of the national birth cohort. Where data were available, national uptake was 94% for the BCG vaccination. This is an increase of 2% compared to Q3-2006 when BCG uptake was 92%.

Table 1. Immunisation uptake (%) at 12 months in cohort born 01/10/2005–31/12/2005

HSE Area	No. in cohort	BCG	D ₃	P ₃	T ₃	Hib ₃	Polio ₃	MenC ₃
Eastern	5501	na	83	83	83	83	83	83
Midland	961	94	91	91	91	91	91	91
Mid Western	1286	97	89	89	89	89	89	89
North Eastern	1599	na	88	88	88	88	88	86
North Western	779	92	94	94	94	93	94	92
South Eastern	1778	93	88	88	88	88	88	87
Southern	2124	90 [†]	87	87	87	87	87	86
Western	1497	na	86	86	86	86	86	86
Ireland	15525**	94	87	87	87	86	87	86

na = not available at this time

[†]HSE-Southern - part coverage of neonatal BCG (i.e. Kerry only)

** Number in cohort for BCG vaccination = 5,161

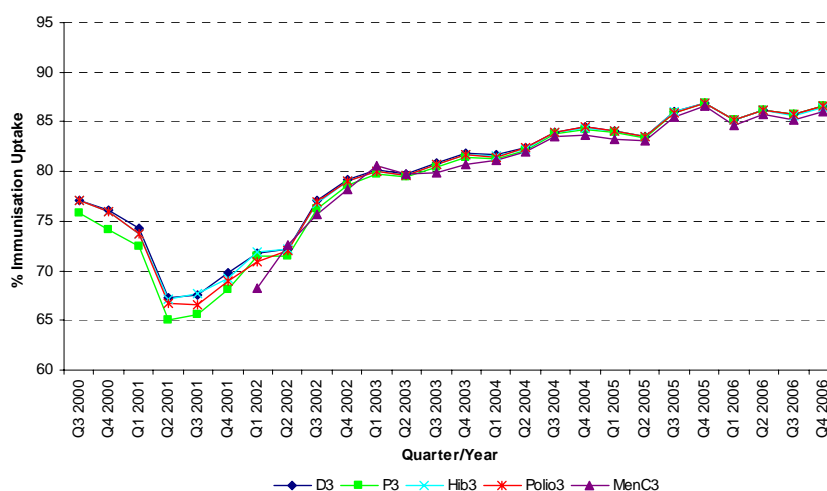


Figure 1. National quarterly immunisation uptake rates at 12 months

Immunisation uptake at 24 months

Immunisation uptake rates in children 24 months of age in Quarter 4-2006 are presented (Table 2). National uptake rates were 92% for D₃, P₃, T₃, Hib₃ and Polio₃ and 91% for MenC₃. Uptake rates for these vaccines ranged from 89% in the HSE-Eastern Area to 97% in the HSE-Midland Area (Table 2). The target uptake rate of 95% was reached for D₃, P₃, T₃, Hib₃, Polio₃ and MenC₃ in the HSE-Midland Area and for D₃, P₃, T₃, Hib₃ and Polio₃ in the HSE-North Western Area. MMR₁ uptake was 86% nationally, ranging from 82% in the HSE-Eastern Area to 94% in the HSE-Midland Area (Table 2).

Trends at 24 months

Figure 2 presents the national uptake rates at 24 months for each antigen from Q1-1999 to Q4-2006. In Q4-2006, national uptake rates for D₃, P₃, T₃, Hib₃ and Polio₃ increased by 1% compared to Q3-2006. MenC₃ remained unchanged when compared with the previous quarter.

Uptake rates for D₃, P₃, T₃, Hib₃, Polio₃ and MenC₃ increased by 2% in the HSE-North Eastern Area compared to the previous quarter.

MMR₁ uptake

In Q4-2006, the national MMR₁ uptake rate at 24 months was 86%, unchanged from the previous quarter.

Compared to Q3-2006 the MMR₁ uptake rate increased by 2% in the HSE-North Western Area. The uptake rate for MMR₁ decreased by 2% in the HSE-Mid-Western Area and by 1% in the HSE-North Eastern, South Eastern and Southern Areas compared to Q3-2006. The uptake rate was unchanged in the HSE-Eastern, Midland and Western Areas compared to the previous quarter.

The target uptake rate of 95% for MMR₁ was not reached in any of the areas.

Internationally

In Q4-2006, vaccination coverage statistics at 24 months for D₃, P₃, T₃, Hib₃, Polio₃ and MenC₃ were 96-97% in Wales (provisional), 97-98% in Northern Ireland and Scotland.¹ MMR₁ uptake was 86% in Wales (provisional), 92% in Northern Ireland and 93% in Scotland.

Conclusions

In Q4-2006, the national MMR₁ uptake was 86%, this is 9% below the national target rate of 95% uptake. Uptake rates for all other vaccines at 24 months were 3-4% below the national target rates.

Acknowledgements

HPSC would like to thank the HSE Areas for providing data and special thanks to the Specialists in Public Health Medicine, Immunisation Co-ordinators, Surveillance Scientists and Systems Analysts for their assistance.

References

1. COVER programme: October to December 2006. Health Protection Report 2007: 1(13). Available at: <http://www.hpa.org.uk/hpr>

Table 2. Immunisation uptake (%) at 24 months in cohort born 01/10/2004 – 31/12/2004

HSE Area	No. in cohort	D ₃	P ₃	T ₃	Hib ₃	Polio ₃	MenC ₃	MMR ₁
Eastern	5717	89	89	89	89	89	89	82
Midland	993	97	97	97	97	97	97	94
Mid Western	1275	92	92	92	92	92	92	87
North Eastern	1608	94	94	94	94	94	94	88
North Western	783	96	96	96	95	96	92	92
South Eastern	1722	92	92	92	92	92	91	87
Southern	2232	93	93	93	93	93	93	87
Western	1426	93	93	93	93	93	91	85
Ireland	15756	92	92	92	92	92	91	86

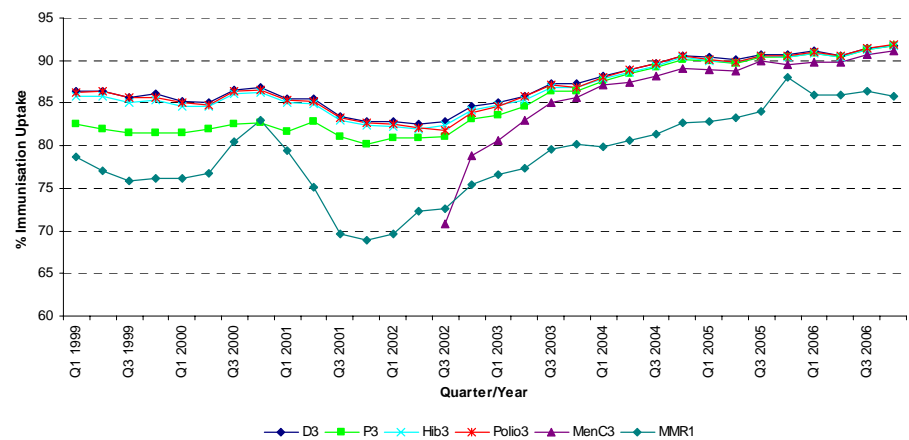


Figure 2. National quarterly immunisation uptake rates at 24 months

Please note The Q4-2005 MMR₁ figure is based on data from seven of the eight HSE-Areas as the HSE-Eastern Area were unable to provide MMR₁ uptake data. The Q1-2006 figure includes the HSE-Eastern Area MMR₁ figure which is an estimate only

Further information

Table 3 presents national quarterly immunisation uptake rates at 24 months from Q1-2003 to Q4-2006. A complete listing of national and regional immunisation uptake statistics at 12 and 24 months for each HSE Area are available at the following URL: <http://www.ndsc.ie/hpsc/A-Z/VaccinePreventable/Vaccination/ImmunisationUptakeStatistics/>

Table 3. National quarterly immunisation uptake rates at 24 months

Quarter -Year	D ₃	P ₃	T ₃	Hib ₃	Polio ₃	MenC ₃	MMR ₁
Q1-2003	85	84	85	85	85	81	77
Q2-2003	86	85	86	85	86	83	77
Q3-2003	87	86	87	87	87	85	80
Q4-2003	87	86	87	87	87	86	80
Q1-2004	88	88	88	88	88	87	80
Q2-2004	89	88	89	89	89	87	81
Q3-2004	90	89	90	89	90	88	81
Q4-2004	91	90	91	90	90	89	83
Q1-2005	90	90	90	90	90	89	83
Q2-2005	90	90	90	90	90	89	83
Q3-2005	91	90	91	91	91	90	84
Q4-2005	91	90	91	90	91	89	88*
Q1-2006	91	91	91	91	91	90	86**
Q2-2006	91	90	91	90	91	90	86
Q3-2006	91	91	91	91	91	91	86
Q4-2006	92	92	92	92	92	91	86

* This figure is based on data from seven of the eight HSE-Areas as the HSE-Eastern Area were unable to provide MMR₁ uptake data in Q4-2005

** This figure includes the HSE-Eastern MMR₁ Q1-2006 uptake figure, which is an estimate only