

Summary

In Quarter 2-2006, national immunisation uptake rates, in children 12 months of age, for D₃, P₃, T₃, Hib₃, Polio₃ and MenC₃ were 86%. This is an increase of 1% when compared with Q1-2006. Uptake of BCG was 92% in Q2-2006.

National immunisation uptake rates at 24 months, in Q2-2006, for D₃, T₃ and Polio₃ were 91% while P₃, Hib₃ and MenC₃ were 90%. Uptake rates for D₃, T₃, Polio₃ and MenC₃ remained unchanged when compared with the previous quarter while P₃ and Hib₃ uptake decreased by 1%.

In Q2-2006, the national immunisation uptake rate at 24 months for MMR₁ was 86%.

Trends at 12 months

Figure 1 presents the national uptake rates at 12 months for each vaccine from Q3-2000 to Q2-2006. In Q2-2006 national uptake rates for D₃, P₃, T₃, Hib₃, Polio₃ and MenC₃, at 12 months, increased by 1% when compared to the previous quarter. The HSE-Eastern Area, HSE-Mid Western Area and HSE-North Western Area reported increases of 2-3% in uptake rates for all antigens at 12 months compared to Q1-2006.

Internationally

Vaccination coverage statistics for children 12 months of age in Quarter 2-2006 were 95% in Wales, 96% in Northern Ireland and 96-97% in Scotland.¹

Introduction

The immunisation uptake statistics presented in this report relate to children 12 and 24 months of age in Quarter 2-2006 and who have received three doses of vaccines against diphtheria (D₃), pertussis (P₃), tetanus (T₃), *Haemophilus influenzae* type b (Hib₃), polio (Polio₃), meningococcal group C (MenC₃), one dose of vaccine against measles, mumps and rubella (MMR₁; uptake at 24 months only) and one dose of BCG vaccine (BCG; uptake at 12 months only). These statistics therefore relate to uptake in the cohorts born between 01/04/2005 & 30/06/2005 and 01/04/2004 & 30/06/2004.

Immunisation uptake at 12 months

Immunisation uptake rates in children 12 months of age in Q2-2006 are presented (Table 1). National uptake rates for D₃, P₃, T₃, Hib₃, Polio₃ and MenC₃ were 86%. In Q2-2006 the highest uptake rates for these vaccines at 12 months were in the HSE-Midland Area (92%) and HSE-North Western Area (91-92%) while the lowest rates were in the HSE-Eastern Area (82-83%). BCG uptake data are available for five of the eight HSE-Areas (data from HSE-Southern Area relates to Kerry CCA only). These areas cover only a third of the national birth cohort. Where data were available, national uptake was 92% for the BCG vaccination. This is a decrease of 2% compared to Q1-2006. However, this decrease in BCG uptake reflects a slight change in the calculation of the BCG uptake rate in the HSE-SE. In previous reports the HSE-SE BCG cohort at 12 months was based on the number of children born in the HSE-SE, however, in this and future reports the BCG cohort is all children at 12 months on the HSE-SE immunisation database who were eligible for vaccination (regardless of place of birth).

Table 1. Immunisation uptake (%) at 12 months in cohort born 01/04/2005–30/06/2005

HSE Area	No. in cohort	BCG	D ₃	P ₃	T ₃	Hib ₃	Polio ₃	MenC ₃
Eastern	5667	na	82	82	82	82	83	82
Midland	970	92	92	92	92	92	92	92
Mid Western	1307	91	90	90	90	90	90	90
North Eastern	1581	na	87	87	87	87	87	86
North Western	819	94	92	92	92	92	92	91
South Eastern	1660	93	85	85	85	85	85	85
Southern	2099	88 [†]	86	86	86	86	86	86
Western	1447	na	89	89	89	89	89	88
Ireland	15553^{**}	92	86	86	86	86	86	86

na = not available at this time

[†]HSE-Southern - part coverage of neonatal BCG (i.e. Kerry only)

^{**}Number in cohort for BCG vaccination = 5,192

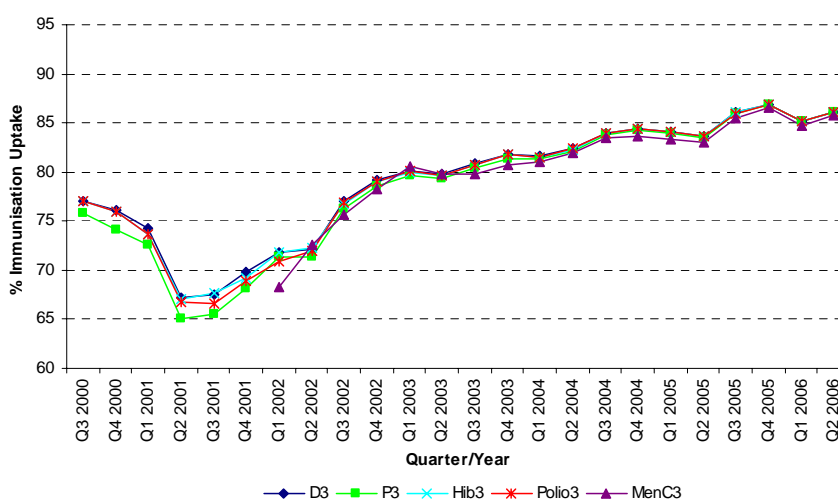


Figure 1. National quarterly immunisation uptake rates at 12 months

Immunisation uptake at 24 months

Immunisation uptake rates in children 24 months of age in Quarter 2-2006 are presented (Table 2). National uptake rates were 91% for D₃, T₃ and Polio₃ and 90% for P₃, Hib₃ and MenC₃. Uptake rates for these vaccines ranged from 87% in the HSE-Eastern Area to 95% in the HSE-Midland Area (Table 2). The target uptake rate of 95% was reached for D₃, P₃, T₃, Hib₃, Polio₃ and MenC₃ in the HSE-Midland Area and for D₃, P₃, T₃, Hib₃ and Polio₃ in HSE-North Western Area. MMR₁ uptake was 86% nationally, ranging from 82% in the HSE-Eastern Area to 93% in the HSE-Midland Area (Table 2).

Trends at 24 months

Figure 2 presents the national uptake rates at 24 months for each antigen from Q1-1999 to Q2-2006. In Q2-2006, national uptake rates for D₃, T₃, Polio₃ and MenC₃ remained unchanged when compared with the previous quarter. P₃ and Hib₃ uptake decreased by 1% compared to the previous quarter.

MMR₁ uptake

In Q2-2006, the national MMR₁ uptake rate at 24 months was 86%. Compared to Q1-2006 MMR₁ uptake rates increased by 1% in the HSE-Southern and Western Areas. The uptake rate for MMR₁ decreased by 2% in the HSE-Midland, Mid-Western and North Eastern Area and decreased by 1% in the HSE-North Western Area compared to Q1-2006. The target uptake rate of 95% for MMR₁ was not reached in any of the areas.

Internationally

In Q2-2006, vaccination coverage statistics at 24 months for D₃, P₃, T₃, Hib₃, Polio₃ and MenC₃ were 96% in Wales, 97% in Northern Ireland and 98% in Scotland.¹ MMR₁ uptake was 87% in Wales, 90% in Northern Ireland, and 92% in Scotland.

Conclusions

In Q2-2006, the national MMR₁ uptake was 86%, this is 9% below the national target rate of 95% uptake. Uptake rates for all other vaccines at 24 months are 4-5% below the national target rates.

Acknowledgements

HPSC would like to thank the HSE Areas for providing data and special thanks to the Specialists in Public Health Medicine, Immunisation Co-ordinators, Surveillance Scientists and Systems Analysts for their assistance.

References

- COVER programme: April to June 2006. CDR Weekly 2006: 16(39). Available at: <http://www.hpa.org.uk/cdr/>

Table 2. Immunisation uptake (%) at 24 months in cohort born 01/04/2004 – 30/06/2004

HSE Area	No. in cohort	D ₃	P ₃	T ₃	Hib ₃	Polio ₃	MenC ₃	MMR ₁
Eastern	5680	87	87	87	87	87	87	82
Midland	947	95	95	95	95	95	95	93
Mid Western	1275	92	91	92	92	92	91	86
North Eastern	1573	91	91	91	91	91	91	88
North Western	795	95	95	95	95	95	94	91
South Eastern	1755	90	89	90	90	90	89	87
Southern	2102	94	93	94	93	93	93	89
Western	1455	92	92	92	92	92	90	87
Ireland	15582	91	90	91	90	91	90	86

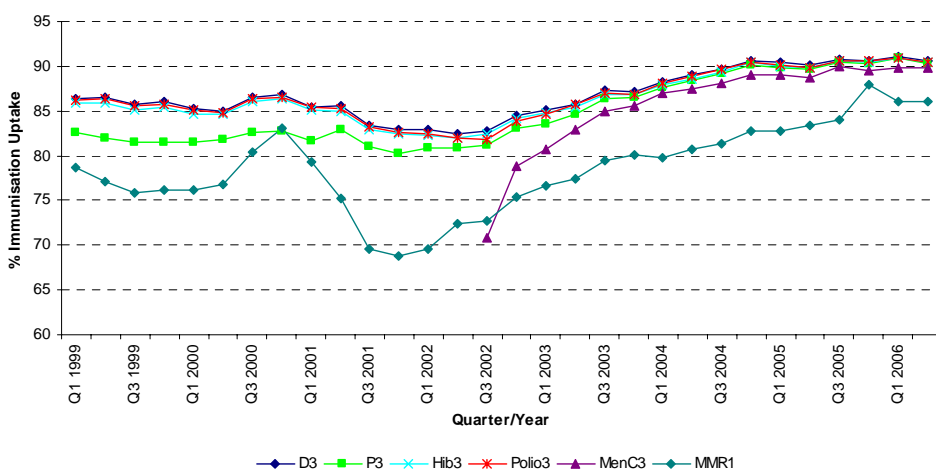


Figure 2. National quarterly immunisation uptake rates at 24 months

Please note The Q4-2005 MMR₁ figure is based on data from seven of the eight HSE-Areas as the HSE-Eastern Area were unable to provide MMR₁ uptake data. The Q1-2006 figure includes the HSE-Eastern Area MMR₁ figure which is an estimate only

Further information

Table 3 presents recent national quarterly immunisation uptake rates at 24 months from Q1-2003 to Q2-2006. A complete listing of national and regional immunisation uptake statistics at 12 and 24 months for each HSE Area are available at the following URL:

<http://www.hpsc.ie/A-Z/VaccinePreventable/Vaccination/Publications/ImmunisationUptakeStatistics/>

Table 3. National quarterly immunisation uptake rates at 24 months

Quarter -Year	D ₃	P ₃	T ₃	Hib ₃	Polio ₃	MenC ₃	MMR ₁
Q1-2003	85	84	85	85	85	81	77
Q2-2003	86	85	86	85	86	83	77
Q3-2003	87	86	87	87	87	85	80
Q4-2003	87	86	87	87	87	86	80
Q1-2004	88	88	88	88	88	87	80
Q2-2004	89	88	89	89	89	87	81
Q3-2004	90	89	90	89	90	88	81
Q4-2004	91	90	91	90	90	89	83
Q1-2005	90	90	90	90	90	89	83
Q2-2005	90	90	90	90	90	89	83
Q3-2005	91	90	91	91	91	90	84
Q4-2005	91	90	91	90	91	89	88*
Q1-2006	91	91	91	91	91	90	86**
Q2-2006	91	90	91	90	91	90	86

* This figure is based on data from seven of the eight HSE-Areas as the HSE-Eastern Area were unable to provide MMR₁ uptake data in Q4-2005

** This figure includes the HSE-Eastern MMR₁ Q1-2006 uptake figure, which is an estimate only