

Summary

In Quarter 1-2006, national immunisation uptake rates in children 12 months of age for D₃, P₃, T₃, Hib₃, Polio₃ and MenC₃ were 85%, a decrease of 2% when compared with Q4-2005. Uptake of BCG was 94% in Q1-2006, an increase of 1% compared to the previous quarter.

Uptake rates at 24 months, in Q1-2006, for D₃, P₃, T₃, Hib₃ and Polio₃ were 91% while MenC₃ uptake was 90%. National immunisation uptake rates for D₃, T₃ and Polio₃ remained unchanged when compared with the previous quarter while P₃, Hib₃ and MenC₃ uptake increased by 1%.

The national immunisation uptake rate for MMR₁ was 86%. However, this figure includes the HSE-Eastern Area MMR₁ uptake figure, which is only an estimate (due to technical problems with extracting MMR₁ data from the HSE-Eastern Area database).

Trends at 12 months

Figure 1 presents the national uptake rates at 12 months for each vaccine from Q3-2000 to Q1-2006. National uptake rates for all antigens, at 12 months in Q1-2006, decreased by 2% when compared to the previous quarter. HSE-Eastern Area reported a decrease of 4% in uptake rates for all antigens at 12 months compared to Q4-2005. HSE-North Eastern Area reported a 3% decrease in MenC₃ compared with the previous quarter.

Internationally

Vaccination coverage statistics for children 12 months of age in Quarter 1-2006 were 96% in Northern Ireland, 96% in Scotland and 95% in Wales.¹

Introduction

The immunisation uptake statistics presented in this report relate to children 12 and 24 months of age in Quarter 1-2006 and who have received three doses of vaccines against diphtheria (D₃), pertussis (P₃), tetanus (T₃), *Haemophilus influenzae* type b (Hib₃), polio (Polio₃), meningococcal group C (MenC₃), one dose of vaccine against measles, mumps and rubella (MMR₁; uptake at 24 months only) and one dose of BCG vaccine (BCG; uptake at 12 months only). These statistics therefore relate to uptake in the cohorts born between 01/01/2005 & 31/03/2005 and 01/01/2004 & 31/03/2004.

Immunisation uptake at 12 months

Immunisation uptake rates in children 12 months of age in Q1-2006 are presented (Table 1). National uptake rates for D₃, P₃, T₃, Hib₃, Polio₃ and MenC₃ were 85%. In Q1-2006 the highest uptake rates for these vaccines at 12 months were reported by the HSE-Midland Area (92%) while the lowest rates were reported in the HSE-Eastern Area (80%).

BCG uptake data are available for five of the eight HSE-Areas (data from HSE-Southern Area relates to Kerry CCA only). These areas cover only a third of the national birth cohort. Where data were available, national uptake was 94% for the BCG vaccination. This represents a 1% increase on the figure reported in Q4-2005 (93%). The target rate of 95% uptake for BCG vaccine was reached in the HSE-Midland and HSE-South Eastern Areas in Q1-2006.

Table 1. Immunisation uptake (%) at 12 months in cohort born 01/01/2005–31/03/2005

HSE Area	No. in cohort	BCG	D ₃	P ₃	T ₃	Hib ₃	Polio ₃	MenC ₃
Eastern	5292	na	80	80	80	80	80	80
Midland	876	95	92	92	92	92	92	92
Mid Western	1248	93	88	88	88	88	88	88
North Eastern	1558	na	90	90	90	90	90	87
North Western	824	91	90	90	90	89	90	89
South Eastern	1686	97*	86	86	86	86	86	86
Southern	2163	86†	87	87	87	87	87	86
Western	1359	na	88	88	88	88	88	88
Ireland	15006**	94	85	85	85	85	85	85

na = not available at this time *HSE-South Eastern - number in cohort for BCG = 1615

†HSE-Southern - part coverage of neonatal BCG (i.e. Kerry only)

**Number in cohort for BCG vaccination = 5028

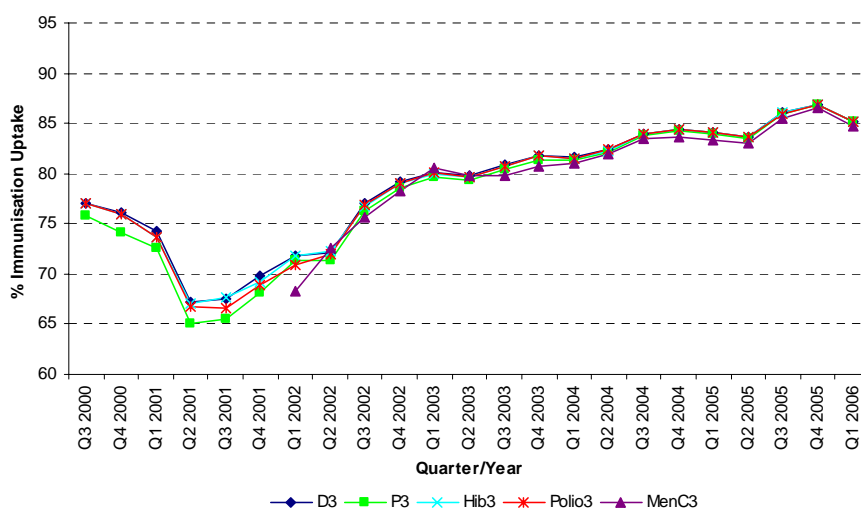


Figure 1. National quarterly immunisation uptake rates at 12 months

Immunisation uptake at 24 months

Immunisation uptake rates in children 24 months of age in Quarter 1-2006 are presented (Table 2). National uptake rates were 91% for D₃, P₃, T₃, Hib₃ and Polio₃ and 90% for MenC₃. Uptake rates for these vaccines ranged from 87-88% in the HSE-Eastern Area to 97% in the HSE-Midland Area (Table 2). The target uptake rate of 95% was reached for all vaccines in the HSE-Midland Area and for D₃, P₃, T₃, Hib₃ and Polio₃ in HSE-North Western Area. MMR₁ uptake was 86% nationally (please note this figure includes the HSE-Eastern Area MMR₁ uptake figure which is an estimate due to technical problems extracting MMR₁ uptake data from the HSE-Eastern Area database). The target uptake rate of 95% was reached for MMR₁ in the HSE-Midland Area (Table 2)

Trends at 24 months

Figure 2 presents the national uptake rates at 24 months for each antigen from Q1-1999 to Q1-2006. In Q1-2006, national uptake rates for D₃, T₃ and Polio₃ remained unchanged when compared with the previous quarter. P₃, Hib₃ and MenC₃ uptake increased by 1% compared to the previous quarter.

MMR₁ uptake

In Q1-2006, the national MMR₁ uptake rate at 24 months was 86%. MMR₁ uptake in the HSE-Eastern Area, in Q1-2006, is an estimate due to technical problems with extraction of MMR₁ uptake data from the HSE-Eastern Area database.

Compared to Q4-2005 MMR₁ uptake rates increased by 3% in the HSE-Southern Area, by 2% in HSE-North Western Area and by 1% in HSE-Mid Western, South Eastern and Western Areas. The uptake rate for MMR₁ remained unchanged in the HSE-Midland Area and decreased by 2% in the HSE-North Eastern Area. As in Q4-2005, the target uptake rate for MMR₁ was reached in the HSE-Midland Area (95%).

Internationally

In Q1-2006, vaccination coverage statistics at 24 months for D₃, P₃, T₃, Hib₃, Polio₃ and MenC₃ were 97% in Northern Ireland and Scotland and 96% in Wales.¹ MMR₁ uptake was 91% in Northern Ireland and Scotland and 86% in Wales.

Conclusions

In Q1-2006, the national MMR₁ uptake was 86%, this is 9% below the national target rate of 95% uptake. (Please note this MMR₁ figure includes the HSE-Eastern Area MMR₁ uptake figure, which is an estimate only). Uptake rates for all other vaccines at 24 months are 4-5% below the national target rates.

Acknowledgements

HPSC would like to thank the HSE Areas for providing data and special thanks to the Specialists in Public Health Medicine, Immunisation Co-ordinators, Surveillance Scientists and Systems Analysts for their assistance.

References

- COVER programme: January to March 2006. CDR Weekly 2006: 16(25). Available at: <http://www.hpa.org.uk/cdr/>

Table 2. Immunisation uptake (%) at 24 months in cohort born 01/01/2004 – 31/03/2004

HSE Area	No. in cohort	D ₃	P ₃	T ₃	Hib ₃	Polio ₃	MenC ₃	MMR ₁
Eastern	5486	88	88	88	88	88	87	82*
Midland	971	97	97	97	97	97	97	95
Mid Western	1203	91	90	91	91	91	91	88
North Eastern	1501	94	93	94	93	93	91	90
North Western	817	96	95	96	95	96	94	92
South Eastern	1725	92	91	92	91	91	91	87
Southern	2087	92	92	92	92	92	91	88
Western	1375	92	92	92	92	92	89	86
Ireland	15165	91	91	91	91	91	90	86*

*Please note the HSE-Eastern Area MMR₁ data is an estimate only

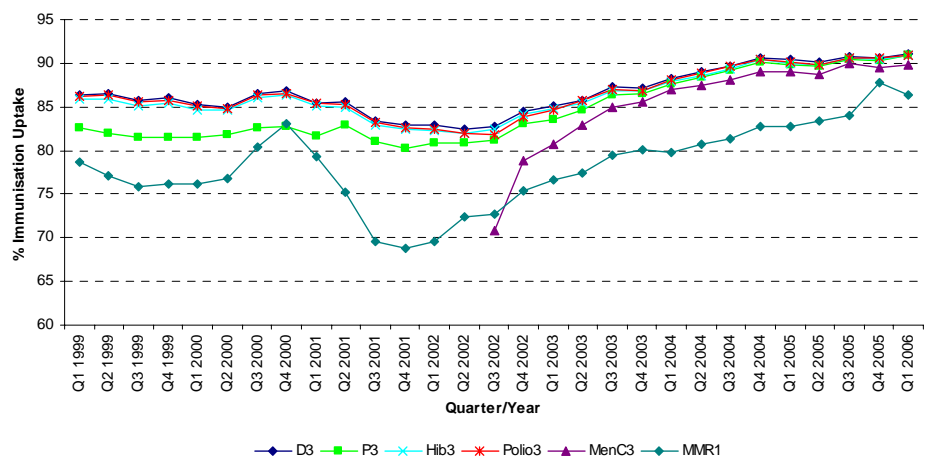


Figure 2. National quarterly immunisation uptake rates at 24 months

Please note The Q4-2005 MMR₁ figure is based on data from seven of the eight HSE-Areas as the HSE-Eastern Area were unable to provide MMR₁ uptake data. The Q1-2006 figure includes the HSE-Eastern Area MMR₁ figure which is an estimate only

Further information

Table 3 presents recent national quarterly immunisation uptake rates at 24 months from Q1-2003 to Q1-2006. A complete listing of national and regional immunisation uptake statistics at 12 and 24 months for each HSE Area are available at the following URL:

<http://www.hpsc.ie/A-Z/VaccinePreventable/Vaccination/Publications/ImmunisationUptakeStatistics/>

Table 3. National quarterly immunisation uptake rates at 24 months

Quarter-Year	D ₃	P ₃	T ₃	Hib ₃	Polio ₃	MenC ₃	MMR ₁
Q1-2003	85	84	85	85	85	81	77
Q2-2003	86	85	86	85	86	83	77
Q3-2003	87	86	87	87	87	85	80
Q4-2003	87	86	87	87	87	86	80
Q1-2004	88	88	88	88	88	87	80
Q2-2004	89	88	89	89	89	87	81
Q3-2004	90	89	90	89	90	88	81
Q4-2004	91	90	91	90	90	89	83
Q1-2005	90	90	90	90	90	89	83
Q2-2005	90	90	90	90	90	89	83
Q3-2005	91	90	91	91	91	90	84
Q4-2005	91	90	91	90	91	89	88*
Q1-2006	91	91	91	91	91	90	86**

* This figure is based on data from seven of the eight HSE-Areas as the HSE-Eastern Area were unable to provide MMR₁ uptake data in Q4-2005

** This figure includes the HSE-Eastern MMR₁ Q1-2006 uptake figure, which is an estimate only