



# Immunisation uptake report for Ireland

Q2-2004

A report by the National Disease Surveillance Centre

## Summary

In Quarter 2-2004, national immunisation uptake rates in children at 12 months of age increased by 1-2% when compared with Q1-2004 with the exception of D<sub>3</sub>, T<sub>3</sub>, and Hib<sub>3</sub>. Uptake rates for all vaccines were 82% with the exception of BCG.

Quarter 2-2004 is the fourth quarter where uptake rates for the BCG vaccination are presented. Where data were available, an uptake rate of 90% was reported for the BCG vaccination. This represents an increase of 2% on the figure reported in Q1-2004.

At 24 months, national uptake rates increased by 1-2% for D<sub>3</sub>, T<sub>3</sub>, Hib<sub>3</sub>, Polio<sub>3</sub> and MMR<sub>1</sub> when compared with the previous quarter. Uptake rates for P<sub>3</sub> and MenC<sub>3</sub> remained unchanged. Uptake rates at 24 months for D<sub>3</sub>, T<sub>3</sub>, Hib<sub>3</sub>, and Polio<sub>3</sub> were 89%, while P<sub>3</sub> uptake was 88%. MenC<sub>3</sub> uptake was 87% and MMR<sub>1</sub> uptake was 81%.

## Trends at 12 months

Figure 1 presents the national uptake rates at 12 months for each vaccine component from Q3-2000 to Q2-2004. National uptake rates for all antigens at 12 months in Q2-2004 increased by 1-2% when compared to the previous quarter with the exception of D<sub>3</sub>, T<sub>3</sub>, and Hib<sub>3</sub>, whose uptake remained unchanged. Both NEHB and WHB reported 4-5% increases in uptake rates for all vaccines at 12 months. Decreases of 1% were reported by MHB, SEHB and SHB for D<sub>3</sub>, T<sub>3</sub>, Hib<sub>3</sub>, and MenC<sub>3</sub>. P<sub>3</sub> uptake remained unchanged in MHB and SHB as did Polio<sub>3</sub> in SEHB. Polio<sub>3</sub> uptake increased by 1% in SHB.

## Internationally

Vaccination coverage statistics for children 12 months of age in Quarter 2-2004 were 94-95% in Northern Ireland<sup>1</sup> and 90-91% for the United Kingdom as a whole<sup>2</sup>.

## Introduction

The immunisation uptake statistics presented in this report relate to children 12 and 24 months of age in Quarter 2-2004 and who have received three doses of vaccines against diphtheria (D<sub>3</sub>), pertussis (P<sub>3</sub>), tetanus (T<sub>3</sub>), *Haemophilus influenzae* type b (Hib<sub>3</sub>), polio (Polio<sub>3</sub>), meningococcal group C (MenC<sub>3</sub>), one dose of vaccine against measles, mumps and rubella (MMR<sub>1</sub>; uptake at 24 months only) and one dose of BCG vaccine (BCG; uptake at 12 months only). These statistics therefore relate to uptake in the cohorts born between 01/04/2003 & 30/06/2003 and 01/04/2002 & 30/06/2002.

## Immunisation uptake at 12 months

Immunisation uptake rates in children 12 months of age in Q2-2004 are presented (Table 1). National uptake rates for D<sub>3</sub>, T<sub>3</sub>, P<sub>3</sub>, Hib<sub>3</sub>, Polio<sub>3</sub> and MenC<sub>3</sub> were 82%. The highest uptake rates for these vaccines at 12 months were reported by the NWHB (89%), while the lowest rates were reported in the ERHA (78%).

Quarter 2-2004 is the fourth quarter where uptake statistics for the BCG vaccination are presented. Data are available for 5 of the 8 health boards at this time, covering less than half of the Q2-2004 birth cohort (data from SHB relates to Kerry CCA only). Where data were available, national uptake was 90% for the BCG vaccination. This represents an increase of 2% on the figure reported in Q2-2004. The target rate of 95% uptake was reached in the SEHB in Q2-2004.

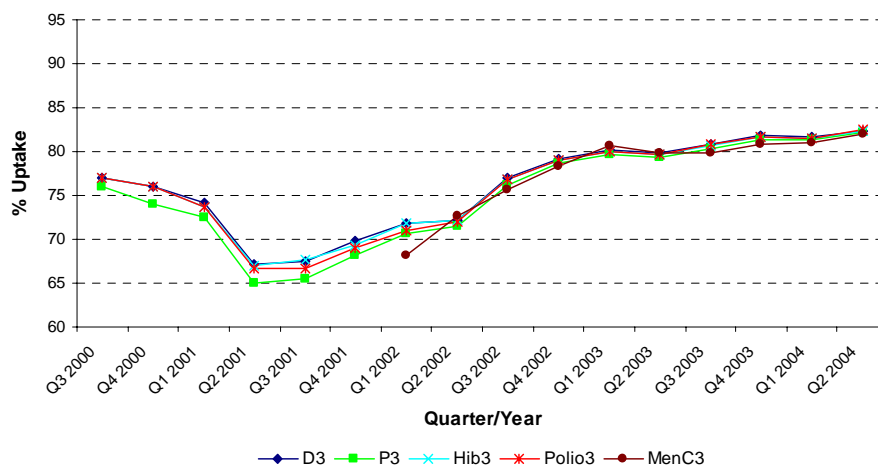
**Table 1.** Immunisation uptake (%) in cohort born 01/04/2003–30/06/2003, calculated at 12 months

Health Board	No. in cohort	BCG	D <sub>3</sub>	P <sub>3</sub>	T <sub>3</sub>	Hib <sub>3</sub>	Polio <sub>3</sub>	MenC <sub>3</sub>
ERHA	5,792	na	78	78	78	78	78	78
MHB	971	86	88	88	88	88	88	88
MWHB	1,300	85	86	85	86	86	86	86
NEHB	1,509	na	86	86	86	86	86	86
NWHB	830	92	89	89	89	89	89	89
SEHB	1,738	97	86	85	86	85	86	85
SHB	2,159	86 <sup>†</sup>	82	82	82	82	82	82
WHB	1,395	na	81	80	81	81	81	79
Ireland	15,694 <sup>‡</sup>	90	82	82	82	82	82	82

<sup>†</sup>SHB - part coverage of neonatal BCG (i.e. Kerry only)

<sup>‡</sup>number in cohort for BCG vaccination = 5,178

na = not available at this time



**Figure 1.** National quarterly immunisation uptake rates at 12 months

## Immunisation uptake at 24 months

Immunisation uptake rates in children 24 months of age in Quarter 2-2004 are presented (Table 2). National uptake rates were 89% for D<sub>3</sub>, T<sub>3</sub>, Hib<sub>3</sub> and Polio<sub>3</sub>, 88% for P<sub>3</sub> and 87% for MenC<sub>3</sub>. Uptake rates for these vaccines ranged from 84-86% in the ERHA up to 94-95% in the NWHB (Table 2). The target uptake rate of 95% was reached for D<sub>3</sub> and T<sub>3</sub> in both the NEHB and NWHB. The target rate of 95% uptake was also reached in the NWHB for P<sub>3</sub> and Polio<sub>3</sub> in the NWHB in Q2-2004. MMR<sub>1</sub> uptake was 81% nationally, ranging from 76% in the ERHA to 91% in the MHB (Table 2).

### Trends at 24 months

Figure 2 presents the national uptake rates at 24 months for each vaccine component from Q1-1999 to Q2-2004. In Q2-2004, national uptake rates increased by 1-2% for D<sub>3</sub>, T<sub>3</sub>, Hib<sub>3</sub>, and Polio<sub>3</sub> at 24 months when compared with the previous quarter. Uptake rates for P<sub>3</sub> and MenC<sub>3</sub> remained unchanged. Increases in uptake for all of these vaccines were reported by the MWHB (1%), NEHB (1-2%) and WHB (1-2%).

### MMR<sub>1</sub> uptake

In Q2-2004, the national MMR<sub>1</sub> uptake rate at 24 months was 81%, an increase of 1% on the previous quarter. MMR<sub>1</sub> uptake rates increased by 1-2% in the ERHA, MHB, MWHB, NEHB, NWHB and WHB. The uptake rate for MMR<sub>1</sub> remained unchanged in SEHB and SHB. As in Q1-2004, the highest uptake rate for MMR<sub>1</sub> uptake was recorded in the MHB (91%).

### Internationally

In Q2-2004, vaccination coverage statistics at 24 months for D<sub>3</sub>, P<sub>3</sub>, T<sub>3</sub>, Hib<sub>3</sub>, Polio<sub>3</sub> and MenC<sub>3</sub> were 96-97% in Northern Ireland<sup>1</sup> and 93-94% for the United Kingdom as a whole.<sup>2</sup> MMR<sub>1</sub> uptake was 89% in Northern Ireland<sup>1</sup> and 82% in the UK.<sup>2</sup>

## Conclusions

The national MMR<sub>1</sub> uptake rate remains 2% below the uptake rate reported in Q4-2000 and 14% below the national target rate of 95% uptake. Uptake rates for all other vaccines remain 6-8% below the national target rates.

## Acknowledgements

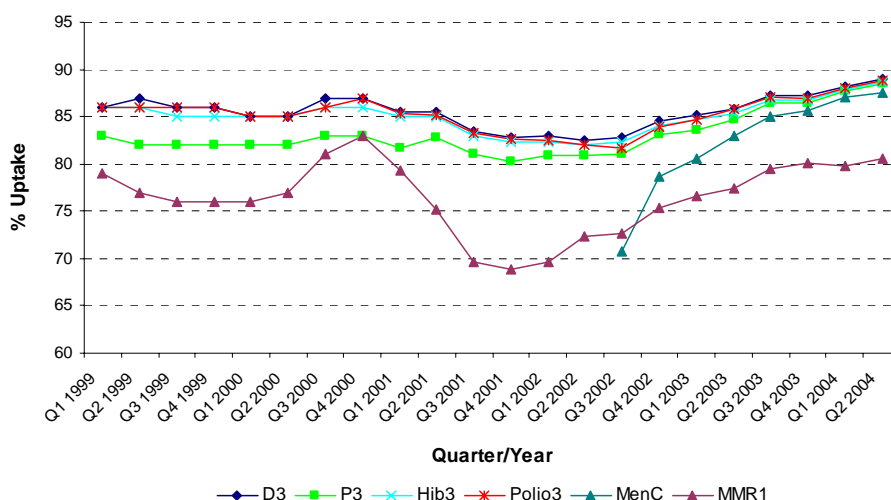
NDSC would like to thank the health boards for providing data and special thanks to the Specialists in Public Health Medicine, Immunisation Co-ordinators, Surveillance Scientists and Systems Analysts for their assistance.

## References

1. Vaccination coverage statistics for children in Northern Ireland. Available at: <http://www.cdscni.org.uk/surveillance/CoverageStats/default.asp>
2. COVER programme: April to June 2004. CDR Weekly 2004: 14(39). Available at: <http://www.hpa.org.uk/cdr/default.htm>

**Table 2.** Immunisation uptake (%) in cohort born 01/04/2002 – 30/06/2002, calculated at 24 months

Health Board	No. in cohort	D <sub>3</sub>	P <sub>3</sub>	T <sub>3</sub>	Hib <sub>3</sub>	Polio <sub>3</sub>	MenC <sub>3</sub>	MMR <sub>1</sub>
ERHA	5,493	86	86	86	86	86	84	76
MHB	955	93	92	93	93	93	93	91
MWHB	1,239	89	88	89	89	89	88	84
NEHB	1,454	95	94	95	94	94	93	84
NWHB	789	95	95	95	94	95	94	87
SEHB	1,673	91	90	91	91	91	90	86
SHB	2,236	87	86	87	87	87	86	82
WHB	1,366	90	90	90	90	90	86	76
Ireland	15,205	89	88	89	89	89	87	81



**Figure 2.** National quarterly immunisation uptake rates at 24 months

## Further information

Table 3 presents recent national quarterly immunisation uptake rates at 24 months from Q3-2002 to Q2-2004. A complete listing of national and regional immunisation uptake statistics at 12 and 24 months for each health board are available at the following URL:

[www.ndsc.ie/Publications/Immunisation/LatestImmunisationUptakeStatistics/](http://www.ndsc.ie/Publications/Immunisation/LatestImmunisationUptakeStatistics/)

**Table 3.** National quarterly immunisation uptake rates at 24 months

Quarter -Year	D <sub>3</sub>	P <sub>3</sub>	T <sub>3</sub>	Hib <sub>3</sub>	Polio <sub>3</sub>	MenC <sub>3</sub>	MMR <sub>1</sub>
Q3-2002	83	81	83	82	82	71	73
Q4-2002	85	83	85	84	84	79	75
Q1-2003	85	84	85	85	85	81	77
Q2-2003	86	85	86	85	86	83	77
Q3-2003	87	86	87	87	87	85	80
Q4-2003	87	86	87	87	87	86	80
Q1-2004	88	88	88	88	88	87	80
Q2-2004	89	88	89	89	89	87	81