

IMMUNISATION UPTAKE STATISTICS FOR IRELAND



A REPORT BY THE NATIONAL DISEASE SURVEILLANCE CENTRE

Quarter 2-2003

November, 2003

Summary

In Quarter 2-2003, national uptake rates for P₃ and MenC₃ at 12 months decreased by 1%, uptake rates for the other vaccines remained unchanged compared to Q1-2003. Uptake rates for D₃, T₃, Hib₃, Polio₃ and MenC₃ were 80% while the uptake rate for P₃ was 79%.

At 24 months, national uptake rates for D₃, P₃, T₃, and Polio₃ increased by 1% and MenC₃ by 2% in Quarter 2-2003 when compared with the previous quarter. Uptake rates for Hib₃ and MMR₁ remained unchanged when compared with Q1-2003. Uptake rates at 24 months for D₃, T₃, and Polio₃ were 86%, P₃ and Hib₃ uptake were 85% and MenC₃ uptake was 83% and MMR₁ uptake was 77%.

Introduction

The immunisation uptake statistics for children 12 and 24 months of age in Quarter 2-2003 and who have received three doses of vaccines against diphtheria (D₃), pertussis (P₃), tetanus (T₃), *Haemophilus influenzae* type b (Hib₃), polio (Polio₃), Meningococcal group C (MenC₃) and one dose of vaccine against measles, mumps and rubella (MMR₁; uptake at 24 months only) are presented in this report. These statistics relate to uptake in the cohorts born between 01/04/2002 & 30/06/2002 and 01/04/2001 & 30/06/2001.

Results

Immunisation uptake at 12 months in Quarter 2-2003

Immunisation uptake rates in children 12 months of age in Quarter 2-2003 are presented (Table 1). National uptake rates for D₃, T₃, Hib₃, Polio₃ and MenC₃ at 12 months were 80% and 79% for P₃. The highest uptake rates at 12 months were reported by the NWHB at 86-89%, while the lowest rates were reported in the WHB at 72-74% (Table 1).

National uptake rates for P₃ and MenC₃ at 12 months decreased by 1%, uptake rates for the other vaccines remained unchanged compared to the previous quarter. Three of the eight health boards reported increases in uptake rates for all vaccines; MWHB (1-3%), NWHB (2-3%) and WHB (3%) [Appendix 1]. Uptake rates for all vaccines decreased by 1-2% in the ERHA, MHB and SEHB while uptake rates in the SHB decreased by 3-4%. In the NWHB uptake rates of D₃, P₃, T₃,

Hib₃ and Polio₃ remained unchanged compared to the previous quarter while MenC₃ uptake increased by 1%.

The WHB reported the greatest increases in uptake rates at 12 months for D₃, T₃, Polio₃ and MenC₃ (3%) while the MWHB, NWHB and WHB all reported a 3% increase in P₃ uptake. Uptake of Hib₃ also increased by 3% in NWHB and WHB.

Vaccination coverage statistics for children 12 months of age in Quarter 2-2003 were 95% in Northern Ireland¹ and 91% for the United Kingdom as a whole².

Table 1. Immunisation uptake rates in children 12 months of age in Quarter 2-2003

% Uptake at 12 months Cohort born 01/04/2002 – 30/06/2002							
Health Board	No. in cohort	D ₃	P ₃	T ₃	Hib ₃	Polio ₃	MenC ₃
ERHA	5,558	76	76	76	76	76	78
MHB	956	84	84	84	84	84	84
MWHB	1,203	82	81	82	82	82	80
NEHB	1,526	81	81	81	81	81	81
NWHB	806	89	88	89	89	89	86
SEHB	1,665	84	84	84	84	84	84
SHB	2,194	81	80	81	81	81	80
WHB	1,338	74	74	74	74	74	72
Ireland	15,246	80	79	80	80	80	80

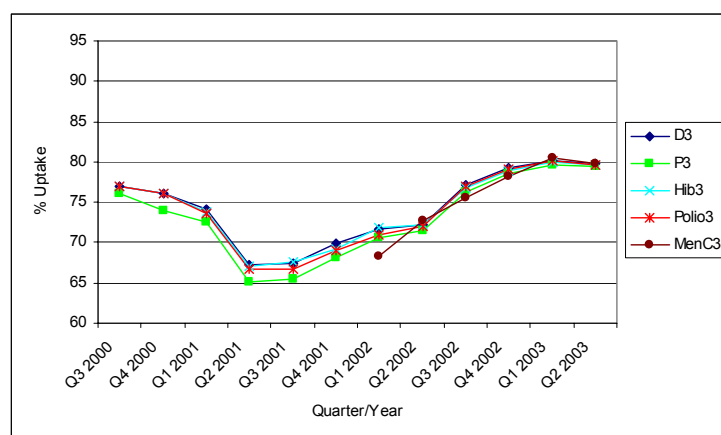


Figure 1. Quarterly immunisation uptake rates at 12 months in Ireland (Note: scale ranges from 60-95% uptake)

Immunisation uptake at 24 months in Quarter 2- 2003

Immunisation uptake rates in children 24 months of age in Quarter 2-2003 are presented (Table 2). National uptake rates were 86% for D₃, T₃, and Polio₃, and 85% for P₃ and Hib₃. Uptake rates for these vaccines ranged from 82-83% in the WHB up to 91-93% in the NWHB (Table 2). Uptake for MenC₃ at a national level was 83%, the ERHA having the lowest uptake rate at 79% and the MHB having the highest rate of 92%. MMR₁ uptake was 77% nationally, ranging from 71% in the WHB to 88% in the MHB (Table 2). The target rate of 95% uptake at 24 months was not reached at either national or health board level for any vaccine.

Table 2. Immunisation uptake rates in children 24 months of age in Quarter 2- 2003

% Uptake at 24 months								
Cohort born 01/04/2001 – 30/06/2001								
Health Board	No. in cohort	D ₃	P ₃	T ₃	Hib ₃	Polio ₃	MenC ₃	MMR ₁
ERHA	5,341	83	83	83	83	83	79	74
MHB	882	92	89	92	92	92	92	88
MWHB	1,207	86	84	86	85	86	83	78
NEHB	1,517	89	89	89	89	92	86	78
NWHB	778	93	91	93	91	93	90	82
SEHB	1,636	86	86	86	86	86	85	82
SHB	2,059	85	84	85	85	85	84	79
WHB	1,262	83	82	83	83	83	80	71
Ireland	14,720	86	85	86	85	86	83	77

In Q2-2003, national uptake rate for MenC₃ at 24 months increased by 2%, D₃, P₃, T₃, and Polio₃ increased by 1%, and Hib₃ and MMR₁ remained unchanged when compared with the previous quarter (Figure 2 and Table 3). The largest increases in uptake for D₃, P₃, T₃, and Hib₃ at 24 months were reported in the MHB (all 3%). The ERHA and the MHB both reported a 3% increase in uptake of Polio₃. Seven of the health boards reported an increase in MenC₃ uptake, the largest being the MHB (7%).

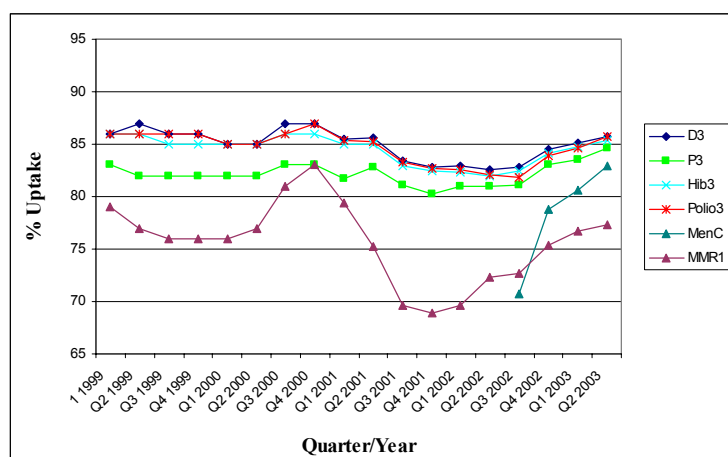


Figure 2. Quarterly immunisation uptake rates at 24 months in Ireland (Note: scale ranges from 65-95% uptake)

MMR₁ uptake by Health Board

In Q2-2003, the national MMR₁ uptake rate at 24 months was 77% - unchanged from the previous quarter. MMR₁ uptake rates increased in the ERHA (+3%), MHB (+1%) and NWHB (+3%)

Table 3. Quarterly national immunisation uptake rates (%) at 24 months

	D ₃	P ₃	T ₃	Hib ₃	Polio ₃	MMR ₁
Q1 1999	86	83	86	86	86	79
Q2 1999	87	82	87	86	86	77
Q3 1999	86	82	86	85	86	76
Q4 1999	86	82	86	85	86	76
Q1 2000	85	82	85	85	85	76
Q2 2000	85	82	85	85	85	77
Q3 2000	87	83	87	86	86	81
Q4 2000	87	83	87	86	87	83
Q1 2001	86	82	86	85	85	79
Q2 2001	86	83	86	85	85	75
Q3 2001	83	81	83	83	83	70
Q4 2001	83	80	83	82	83	69
Q1 2002	83	81	83	82	83	70
Q2 2002	83	81	83	82	82	72
Q3 2002	83	81	83	82	82	73
Q4 2002	85	83	85	84	84	75
Q1 2003	85	84	85	85	85	77
Q2 2003	86	85	86	85	86	77

Note: Prior to Q3-2002, NWHB provided DTaP/DT uptake as combined value, since not possible to accurately determine P₃ uptake for this health board, it was excluded from overall P₃ analysis

while decreases occurred in NEHB (-1%) SHB (-1%) and WHB (-3%). Rates in the MWHB and SEHB remained unchanged (Figure 3). The national MMR₁ uptake rate is still 6% below the uptake rate reported in Q4-2000 and 18% below the national target.

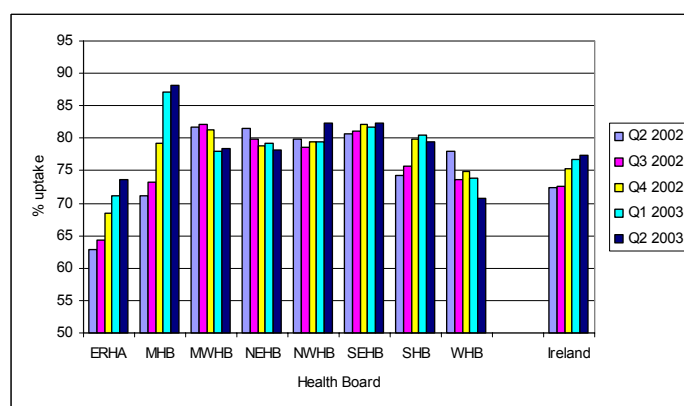


Figure 3. Quarterly MMR₁ uptake rates at 24 months by health board from Q2 2001 to present (Note: scale ranges from 50-95% uptake).

In Quarter 2-2003, vaccination coverage statistics at 24 months for D₃, P₃, T₃, Hib₃, Polio₃ and MenC₃ were 97% in Northern Ireland¹ and 93-94% for the United Kingdom as a whole.² MMR₁ uptake was 88% in Northern Ireland¹ and 79% in the UK.²

Detailed quarterly immunisation uptake statistics at 12 and 24 months for each health board are presented in Appendix 1 & 2 of this report.

References

1. Vaccination coverage statistics for children in Northern Ireland. Available over the WWW at: <http://www.cdscni.org.uk/surveillance/Coveragestats/default.asp>
2. COVER programme: April to June 2003. CDR Weekly 2003: 13(39). Available at: <http://www.hpa.org.uk/cdr/default.htm>

NDSC would like to thank the health boards for providing data and special thanks to the Specialists in Public Health Medicine, Immunisation Co-ordinators, Surveillance Scientists and Systems Analysts for their assistance.

Appendix 1. Quarterly Immunisation Uptake Rates at 12 months by Health Board

Uptake at 12 months ~ ERHA						
	D ₃	P ₃	T ₃	Hib ₃	Polio ₃	MenC ₃
Q3 2000	75	73	75	75	75	
Q4 2000	73	72	73	73	73	
Q1 2001	69	67	69	69	69	
Q2 2001	53	52	53	53	53	
Q3 2001	61	60	61	60	59	
Q4 2001	60	59	60	60	59	
Q1 2002	63	63	63	63	61	60
Q2 2002	63	63	63	64	63	68
Q3 2002	71	70	71	70	70	69
Q4 2002	75	75	75	75	75	74
Q1 2003	77	77	77	77	77	80
Q2 2003	76	76	76	76	76	78

Uptake at 12 months ~ MHB						
	D ₃	P ₃	T ₃	Hib ₃	Polio ₃	MenC ₃
Q3 2000	70	67	70	71	71	
Q4 2000	72	69	72	72	72	
Q1 2001	71	68	71	71	71	
Q2 2001	66	65	66	66	66	
Q3 2001	61	59	61	62	60	
Q4 2001	72	71	72	72	71	
Q1 2002	64	62	64	64	63	58
Q2 2002	69	67	69	69	67	72
Q3 2002	79	78	79	79	79	77
Q4 2002	85	84	85	85	85	84
Q1 2003	86	85	86	86	86	85
Q2 2003	84	84	84	84	84	84

Uptake at 12 months ~ MWHB						
	D ₃	P ₃	T ₃	Hib ₃	Polio ₃	MenC ₃
Q3 2000	74	72	74	74	74	
Q4 2000	72	71	72	72	72	
Q1 2001	77	74	77	74	74	
Q2 2001	69	67	69	69	69	
Q3 2001	64	62	64	64	63	
Q4 2001	70	68	70	70	70	
Q1 2002	78	76	78	77	77	76
Q2 2002	81	80	81	80	81	80
Q3 2002	86	85	86	86	86	87
Q4 2002	86	85	86	85	86	85
Q1 2003	80	79	80	80	80	79
Q2 2003	82	81	82	82	82	80

Uptake at 12 months ~ NEHB						
	D ₃	P ₃	T ₃	Hib ₃	Polio ₃	MenC ₃
Q3 2000	*	*	*	*	*	
Q4 2000	*	*	*	*	*	
Q1 2001	*	*	*	*	*	
Q2 2001	79	78	79	78	78	
Q3 2001	74	73	74	76	75	
Q4 2001	79	78	79	79	78	
Q1 2002	84	82	84	83	84	78
Q2 2002	76	76	76	76	78	73
Q3 2002	80	80	80	80	81	78
Q4 2002	82	82	82	81	82	81
Q1 2003	81	81	81	81	81	80
Q2 2003	81	81	81	81	81	81

* Unable to provide data for this quarter

Uptake at 12 months ~ NWHB						
	D ₃	P ₃	T ₃	Hib ₃	Polio ₃	MenC ₃
Q3 2000	69	**	69	69	69	
Q4 2000	74	**	74	74	74	
Q1 2001	71	**	71	71	71	
Q2 2001	83	**	83	83	82	
Q3 2001	82	**	82	82	80	
Q4 2001	80	**	80	79	78	
Q1 2002	81	81	81	81	81	73
Q2 2002	84	84	84	82	84	79
Q3 2002	87	84	87	87	87	87
Q4 2002	87	86	87	87	87	86
Q1 2003	87	85	87	86	87	84
Q2 2003	89	88	89	89	89	86

Uptake at 12 months ~ SEHB						
	D ₃	P ₃	T ₃	Hib ₃	Polio ₃	MenC ₃
Q3 2000	90	87	90	90	90	
Q4 2000	86	83	86	86	86	
Q1 2001	87	84	87	87	86	
Q2 2001	84	82	84	84	84	
Q3 2001	83	81	83	83	82	
Q4 2001	80	79	80	80	80	
Q1 2002	81	80	81	81	81	79
Q2 2002	80	80	80	80	80	79
Q3 2002	83	82	83	83	83	83
Q4 2002	84	83	84	84	83	83
Q1 2003	86	85	86	86	86	85
Q2 2003	84	84	84	84	84	84

Uptake at 12 months ~ SHB						
	D ₃	P ₃	T ₃	Hib ₃	Polio ₃	MenC ₃
Q3 2000	*	*	*	*	*	
Q4 2000	78	76	78	78	78	
Q1 2001	76	74	76	76	75	
Q2 2001	73	70	73	72	72	
Q3 2001	68	66	68	69	67	
Q4 2001	76	74	76	75	75	
Q1 2002	77	76	77	77	77	74
Q2 2002	76	75	76	75	76	74
Q3 2002	78	77	78	78	78	77
Q4 2002	79	78	79	79	79	78
Q1 2003	84	84	84	84	84	84
Q2 2003	81	80	81	81	81	80

Uptake at 12 months ~ WHB						
	D ₃	P ₃	T ₃	Hib ₃	Polio ₃	MenC ₃
Q3 2000	85	83	85	85	85	
Q4 2000	79	77	79	79	79	
Q1 2001	80	78	80	80	80	
Q2 2001	77	74	77	77	76	
Q3 2001	73	71	73	71	72	
Q4 2001	71	70	71	66	70	
Q1 2002	68	67	68	*	68	66
Q2 2002	76	75	76	76	76	72
Q3 2002	75	74	75	75	75	72
Q4 2002	72	72	72	72	72	71
Q1 2003	71	71	71	71	71	69
Q2 2003	74	74	74	74	74	72

* Unable to provide data for this quarter

** Uptake cannot be accurately calculated as DTaP/DT provided as combined value

Appendix 2 Quarterly Immunisation Uptake Rates at 24 months by Health Board

Uptake at 24 months ~ ERHA							
	D ₃	P ₃	T ₃	Hib ₃	Polio ₃	MenC ₃	MMR ₁
Q1 1999	86	82	86	85	85		78
Q2 1999	85	81	85	84	85		77
Q3 1999	85	81	85	84	85		76
Q4 1999	84	80	84	84	84		76
Q1 2000	84	81	84	84	84		75
Q2 2000	84	81	84	84	84		74
Q3 2000	85	82	85	84	85		81
Q4 2000	85	82	85	84	84		81
Q1 2001	82	80	82	81	82		77
Q2 2001	82	80	82	82	82		67
Q3 2001	79	77	79	78	79		59
Q4 2001	78	76	78	78	78		60
Q1 2002	78	76	78	77	77		60
Q2 2002	78	76	78	77	77		63
Q3 2002	78	77	78	77	76	59	64
Q4 2002	81	80	81	81	79	72	68
Q1 2003	82	81	82	82	80	77	71
Q2 2003	83	83	83	83	83	79	74

Uptake at 24 months ~ MHB							
	D ₃	P ₃	T ₃	Hib ₃	Polio ₃	MenC ₃	MMR ₁
Q1 1999	83	77	83	82	82		72
Q2 1999	85	80	85	83	84		72
Q3 1999	81	77	81	80	81		68
Q4 1999	81	77	81	80	81		69
Q1 2000	83	78	83	83	84		73
Q2 2000	80	76	80	80	80		73
Q3 2000	81	77	81	80	80		75
Q4 2000	83	79	83	83	83		80
Q1 2001	82	77	82	81	81		77
Q2 2001	83	80	83	83	83		75
Q3 2001	81	79	81	81	81		68
Q4 2001	81	77	81	81	81		70
Q1 2002	78	75	78	78	78		64
Q2 2002	75	73	75	73	75		71
Q3 2002	83	80	83	82	83	74	73
Q4 2002	87	86	87	87	87	84	79
Q1 2003	89	86	89	89	89	85	87
Q2 2003	92	89	92	92	92	92	88

Uptake at 24 months ~ MWHB							
	D ₃	P ₃	T ₃	Hib ₃	Polio ₃	MenC ₃	MMR ₁
Q1 1999	82	79	82	81	82		74
Q2 1999	81	79	81	80	81		72
Q3 1999	79	77	79	79	79		73
Q4 1999	80	78	80	80	80		72
Q1 2000	76	73	76	76	76		70
Q2 2000	80	77	80	80	80		75
Q3 2000	83	80	83	82	83		78
Q4 2000	83	80	83	83	82		83
Q1 2001	82	80	82	81	82		78
Q2 2001	86	84	86	84	84		76
Q3 2001	82	80	82	81	82		71
Q4 2001	83	80	83	82	82		70
Q1 2002	86	83	86	85	86		76
Q2 2002	85	83	85	85	85		82
Q3 2002	88	85	88	87	87	83	82
Q4 2002	87	85	87	86	87	87	81
Q1 2003	86	84	86	85	87	81	78
Q2 2003	86	84	86	85	86	83	78

Uptake at 24 months ~ NEHB							
	D ₃	P ₃	T ₃	Hib ₃	Polio ₃	MenC ₃	MMR ₁
Q1 1999	84	**	84	84	84		80
Q2 1999	94	**	94	94	94		78
Q3 1999	95	**	95	95	95		78
Q4 1999	94	**	94	94	94		78
Q1 2000	91	**	91	91	91		81
Q2 2000	89	**	89	89	89		78
Q3 2000	95	**	95	95	95		79
Q4 2000	97	**	97	97	97		82
Q1 2001	94	**	94	94	94		77
Q2 2001	91	90	91	91	90		81
Q3 2001	89	88	89	89	89		76
Q4 2001	93	93	93	93	94		80
Q1 2002	91	90	91	90	90		78
Q2 2002	92	92	92	91	91		82
Q3 2002	91	90	91	91	90	78	80
Q4 2002	89	88	89	89	89	84	79
Q1 2003	90	88	90	90	93	84	79
Q2 2003	89	89	89	89	92	86	78

** Uptake cannot be accurately calculated as DTaP/DT provided as combined value

Uptake at 24 months ~ NWHB							
	D ₃	P ₃	T ₃	Hib ₃	Polio ₃	MenC ₃	MMR ₁
Q1 1999	87	**	87	86	87		76
Q2 1999	87	**	87	87	87		75
Q3 1999	86	**	86	86	86		74
Q4 1999	88	**	88	88	88		73
Q1 2000	86	**	86	86	86		74
Q2 2000	82	**	82	82	82		72
Q3 2000	83	**	83	83	83		72
Q4 2000	85	**	85	84	84		77
Q1 2001	85	**	85	85	85		75
Q2 2001	91	**	91	91	91		83
Q3 2001	90	**	90	90	90		77
Q4 2001	88	**	88	87	88		75
Q1 2002	89	89	89	88	89		81
Q2 2002	92	92	92	91	91		80
Q3 2002	93	88	93	91	91	75	79
Q4 2002	94	91	94	92	93	89	79
Q1 2003	94	91	94	92	93	85	79
Q2 2003	93	91	93	91	93	90	82

Uptake at 24 months ~ SEHB							
	D ₃	P ₃	T ₃	Hib ₃	Polio ₃	MenC ₃	MMR ₁
Q1 1999	92	87	92	92	92		90
Q2 1999	90	84	90	89	89		86
Q3 1999	88	85	88	87	88		85
Q4 1999	87	83	87	87	86		85
Q1 2000	89	85	89	88	88		86
Q2 2000	89	85	89	89	89		89
Q3 2000	91	87	91	90	91		92
Q4 2000	90	85	90	90	90		92
Q1 2001	91	87	91	91	91		90
Q2 2001	89	85	89	88	89		88
Q3 2001	90	88	90	90	90		87
Q4 2001	87	84	87	87	87		82
Q1 2002	89	86	89	88	88		82
Q2 2002	87	85	87	86	87		81
Q3 2002	86	84	86	85	85	83	81
Q4 2002	89	87	89	89	89	85	82
Q1 2003	86	84	86	86	86	83	82
Q2 2003	86	86	86	86	86	85	82

Uptake at 24 months ~ SHB							
	D ₃	P ₃	T ₃	Hib ₃	Polio ₃	MenC ₃	MMR ₁
Q1 1999	87	83	87	87	87		75
Q2 1999	86	81	86	86	86		72
Q3 1999	84	81	84	83	84		70
Q4 1999	86	81	86	85	86		73
Q1 2000	84	80	84	83	84		72
Q2 2000	84	80	84	83	84		76
Q3 2000	86	82	86	85	85		77
Q4 2000	87	83	87	86	86		82
Q1 2001	86	83	86	86	86		80
Q2 2001	85	82	85	85	85		77
Q3 2001	84	82	84	84	84		74
Q4 2001	84	81	84	83	84		74
Q1 2002	85	82	85	84	84		75
Q2 2002	83	81	83	82	83		74
Q3 2002	84	82	84	83	83	77	76
Q4 2002	84	83	84	84	84	81	80
Q1 2003	85	83	85	84	84	82	80
Q2 2003	85	84	85	85	85	84	79

Uptake at 24 months ~ WHB							
	D ₃	P ₃	T ₃	Hib ₃	Polio ₃	MenC ₃	MMR ₁
Q1 1999	92	89	92	92	92		86
Q2 1999	90	87	90	89	90		83
Q3 1999	91	87	91	90	90		81
Q4 1999	95	90	95	90	90		80
Q1 2000	92	87	92	91	92		82
Q2 2000	91	87	91	90	91		82
Q3 2000	92	87	92	91	91		84
Q4 2000	91	87	91	90	91		85
Q1 2001	91	88	91	90	91		84
Q2 2001	87	85	87	87	87		78
Q3 2001	87	85	87	86	87		74
Q4 2001	83	81	83	82	82		68
Q1 2002	84	81	84	83	83		68
Q2 2002	84	81	84	84	83		78
Q3 2002	82	81	82	82	81	71	74
Q4 2002	81	80	81	81	81	75	75
Q1 2003	83	81	83	83	82	80	74
Q2 2003	83	82	83	83	83	80	71

** Uptake cannot be accurately calculated as DTaP/DT provided as combined value