



Epidemiology of Tuberculosis in Ireland, 2011



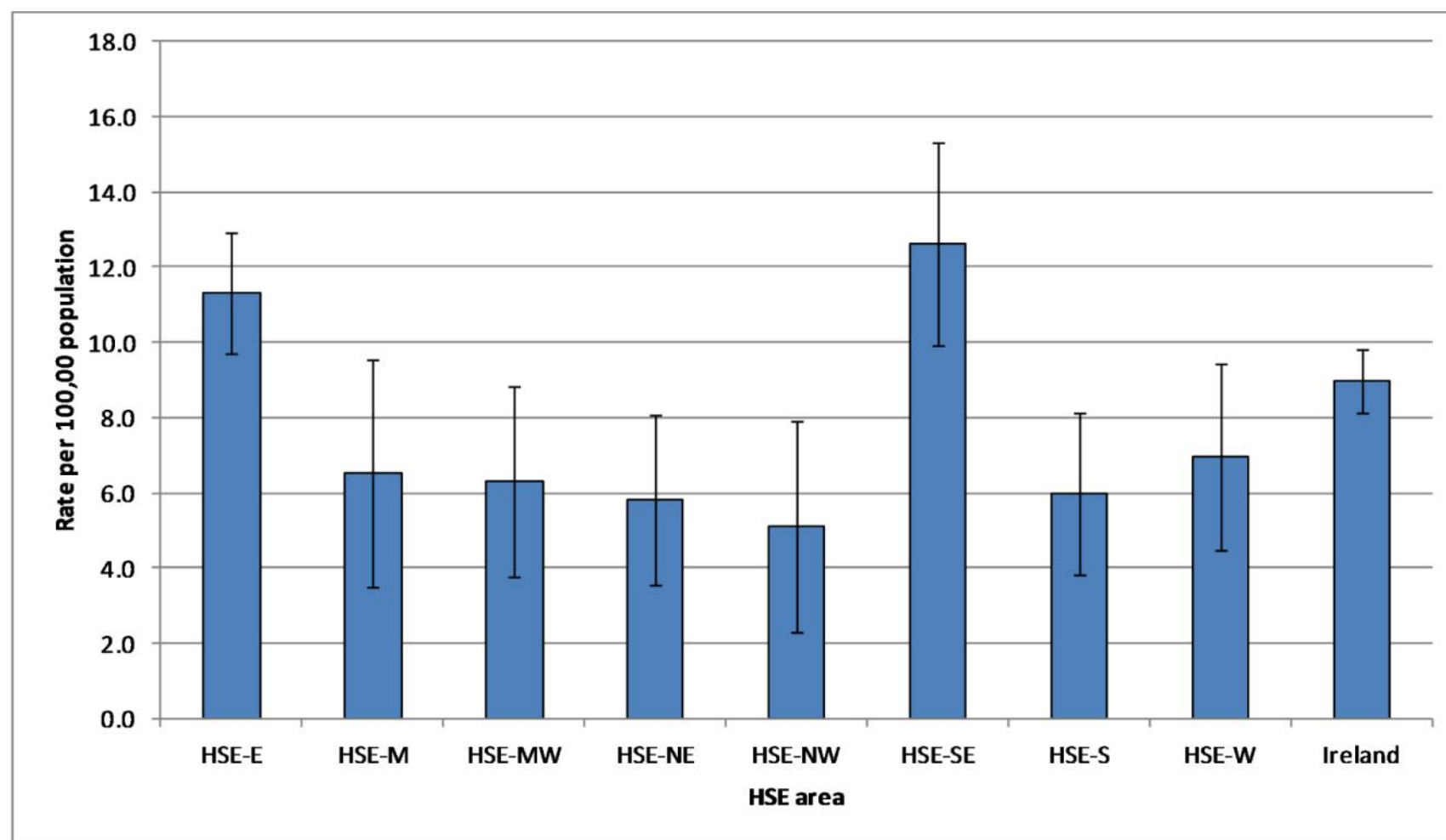
Summary of the epidemiology of TB in Ireland, 2011

Parameter	Number (rate/100,000)	% of Total
Total cases	413 (9.0)	-
Cases in indigenous population	214 (5.7)	51.8
Cases in foreign-born persons*	193 (25.2)	46.7
Culture positive cases	274	66.3
Pulmonary cases	289	70.0
Smear positive pulmonary cases	120	29.1
Multidrug-resistant cases	3	0.7
Mono-resistant to isoniazid	9	2.2
Deaths attributable to TB	9	2.2
Outcomes reported in cases	309	74.8
TB meningitis cases	2	0.5

*Country of birth was unknown for 6 (1.5%) cases

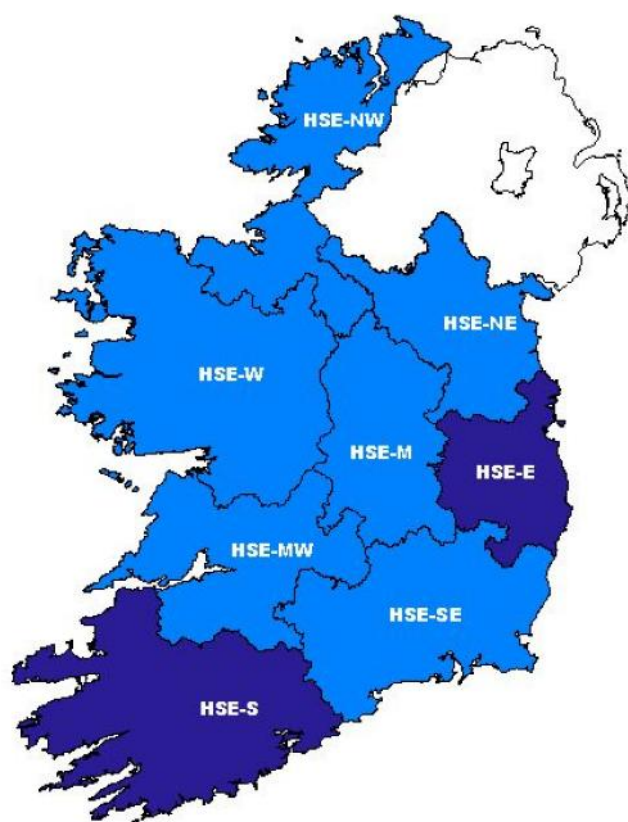


Age-standardised TB incidence rates by HSE area with 95% confidence intervals; 2011

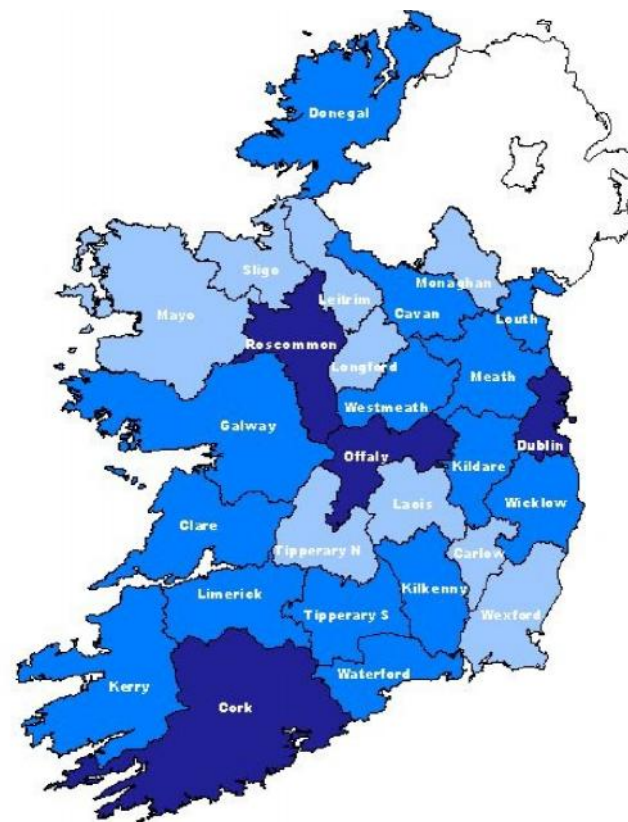




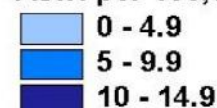
Age-standardised TB incidence rates by HSE area and county, 2011



ASIR per 100,000 population

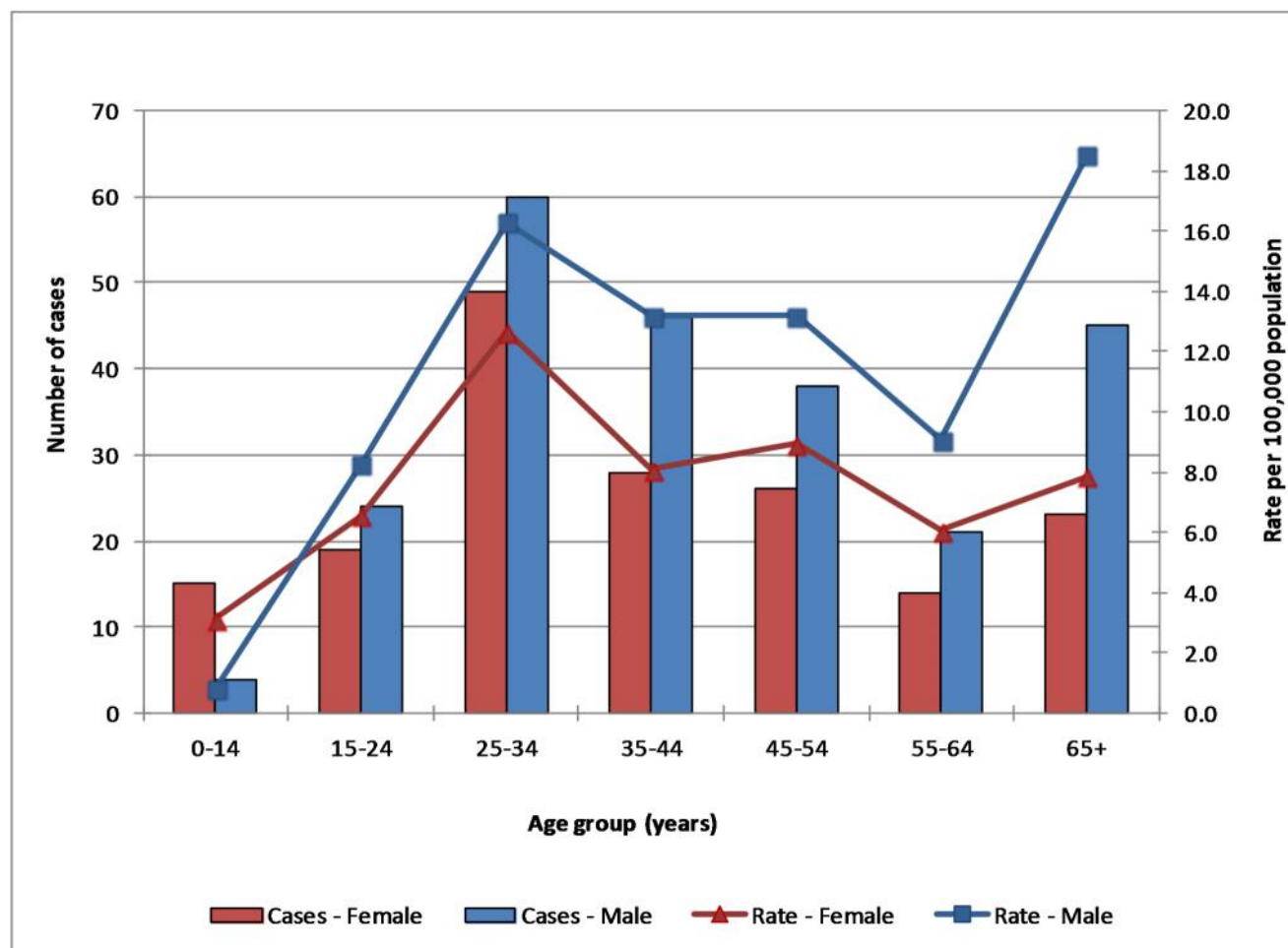


ASIR per 100,000 population



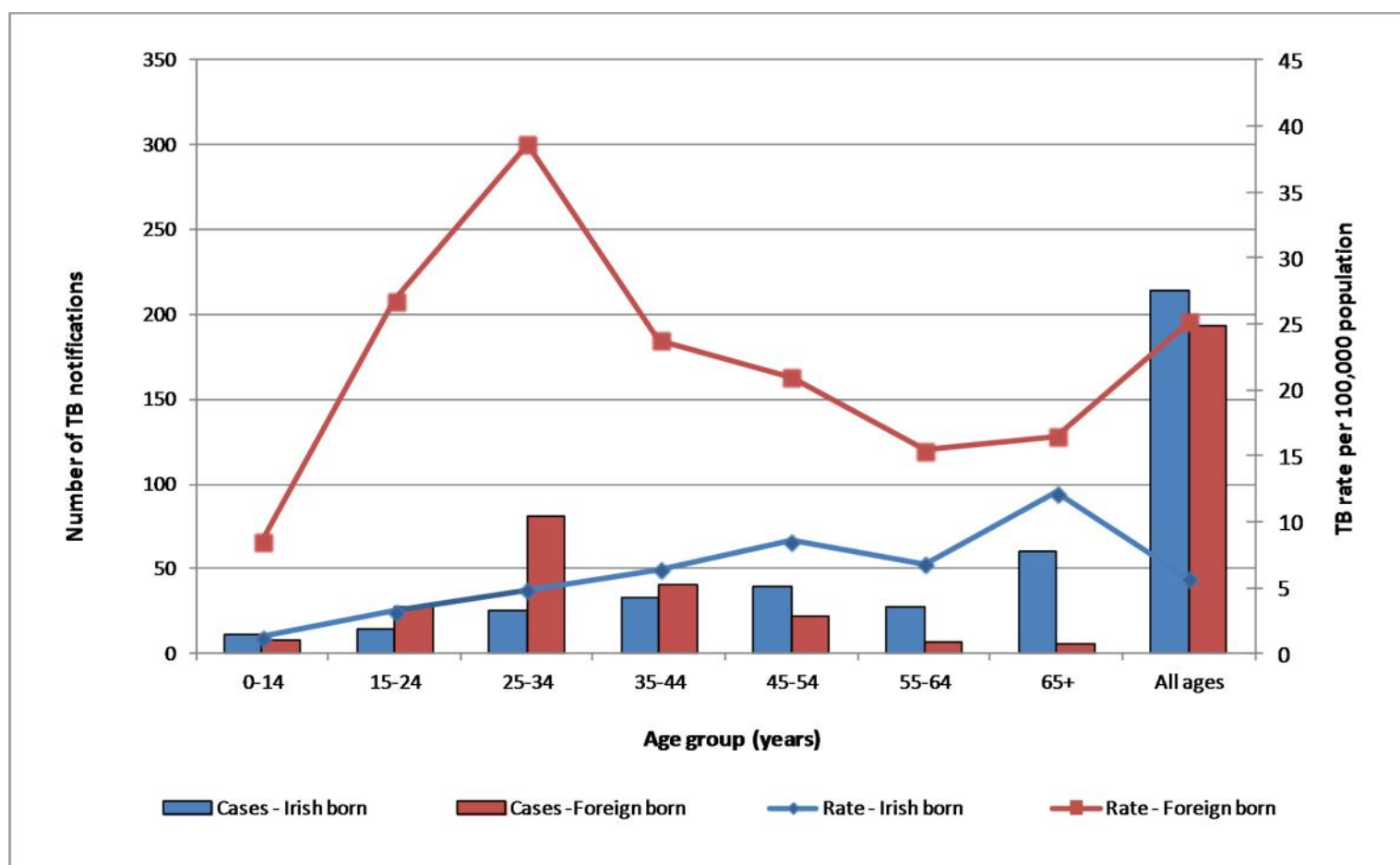


TB cases by age & sex, and age-specific rates; 2011





TB cases by age group and age specific rates by geographic origin, 2011





TB cases and rate per 100,000 population by geographic origin & HSE area, 2011

HSE Area	Irish-born			Foreign-born			Unknown	Total
	Cases	%	Rate	Cases	%	Rate		
HSE-E	90	47.9	7.0	94	50.0	31.1	4	188
HSE-M	6	33.3	2.5	12	66.7	28.9	0	18
HSE-MW	16	66.7	5.0	7	29.2	13.2	1	24
HSE-NE	13	52.0	3.6	12	48.0	15.9	0	25
HSE-NW	5	38.5	2.5	7	53.8	13.7	1	13
HSE-SE	15	50.0	3.5	15	50.0	22.3	0	30
HSE-S	58	69.0	10.5	26	31.0	25.9	0	84
HSE-W	11	35.5	3.1	20	64.5	26.3	0	31
Ireland	214	51.8	5.7	193	46.7	25.2	6	413



TB cases by HSE area and site of disease, 2011

HSE area	Pulmonary only		Extrapulmonary only		Pulmonary + Extrapulmonary		Site unknown	Total
	Cases	% of total	Cases	% of total	Cases	% of total		
HSE-E	125	66.8	51	27.3	11	5.9	1	188
HSE-M	10	55.6	8	44.4	0	0.0	0	18
HSE-MW	17	70.8	6	25.0	1	4.2	0	24
HSE-NE	14	56.0	11	44.0	0	0.0	0	25
HSE-NW	9	69.2	3	23.1	1	7.7	0	13
HSE-SE	19	63.3	6	20.0	5	16.7	0	30
HSE-S	48	57.1	25	29.8	11	13.1	0	84
HSE-W	15	50.0	12	40.0	3	10.0	1	31
Total	257	62.5	122	29.7	32	7.8	2	413



Summary of anti-TB drug resistance, 2011

DST results	Number of cases	% of culture confirmed cases
Cases with DST results	250	91.2
Resistant cases	25	9.1
MDR-TB	3	1.1
Mono-resistance to Isoniazid	9	3.3
Mono-resistance to Rifampicin	0	0.0
Mono-resistance to Pyrazinamide	1	0.4
Mono-resistance to Ethambutol	0	0.0
Mono-resistance to Streptomycin	6	2.2
Cases resistant to isoniazid and streptomycin	5	1.8
Cases resistant to isoniazid and ethambutol	1	0.4

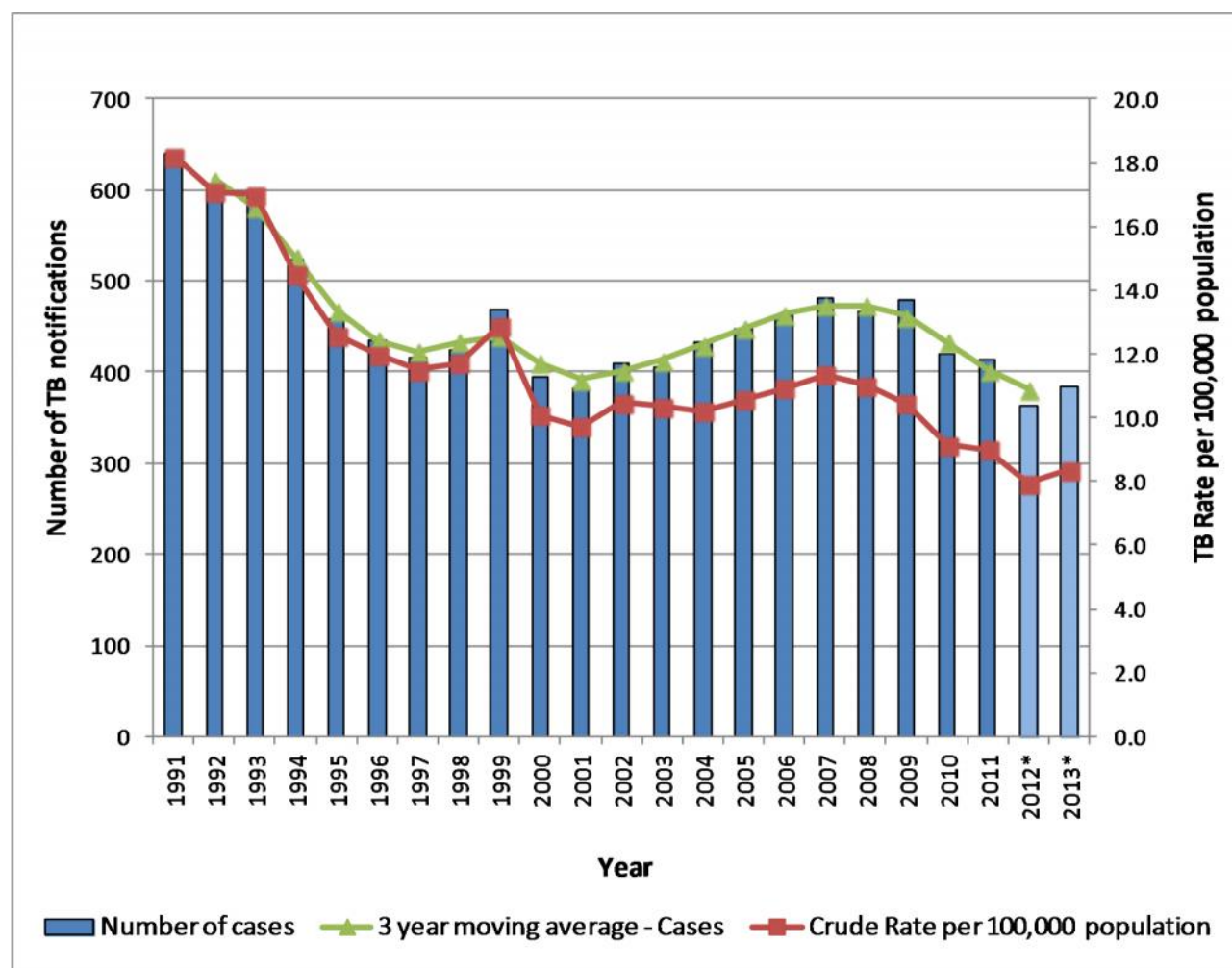


Treatment outcome for TB cases, 2011

Treatment outcome	Total		Smear Positive	
	Number	%	Number	%
Completed - cured	216	52.3	64	53.3
Completed - failed	1	0.2	0	0.0
Completed - status unknown	27	6.5	3	2.5
Died (attributed to TB)	9	2.2	5	4.2
Died (cause unknown)	9	2.2	0	0.0
Died (not attributed to TB)	10	2.4	4	3.3
Lost to follow up	22	5.3	7	5.8
Still on treatment	6	1.5	3	2.5
Transferred	2	0.5	2	1.7
Treatment interrupted	7	1.7	2	1.7
Unknown	104	25.2	30	25.0
Total	413	100.0	120	100.0



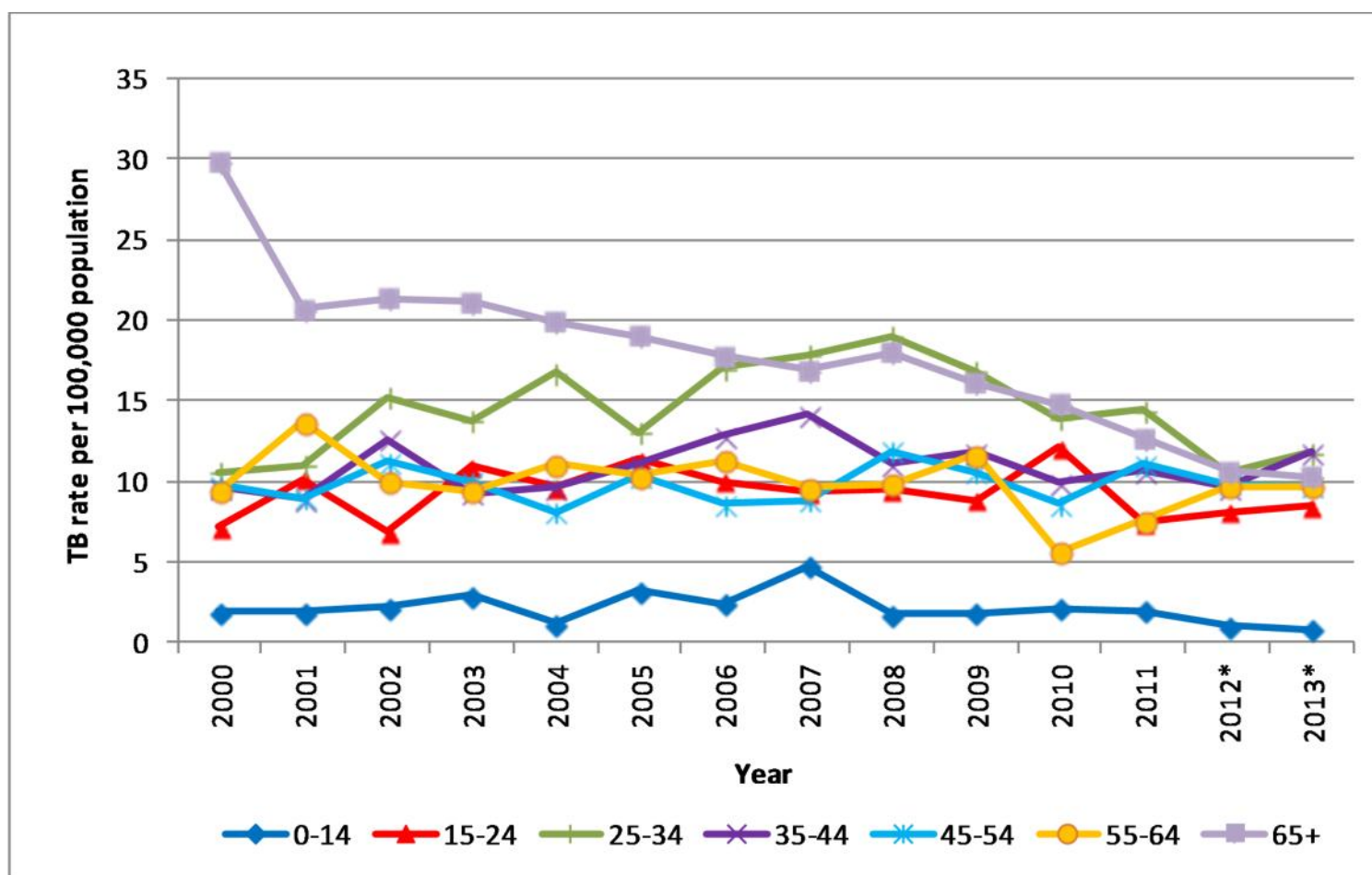
Number of TB cases and crude rate per 100,000: 1991 to 2013*



*2012 and 2013 data are provisional data only



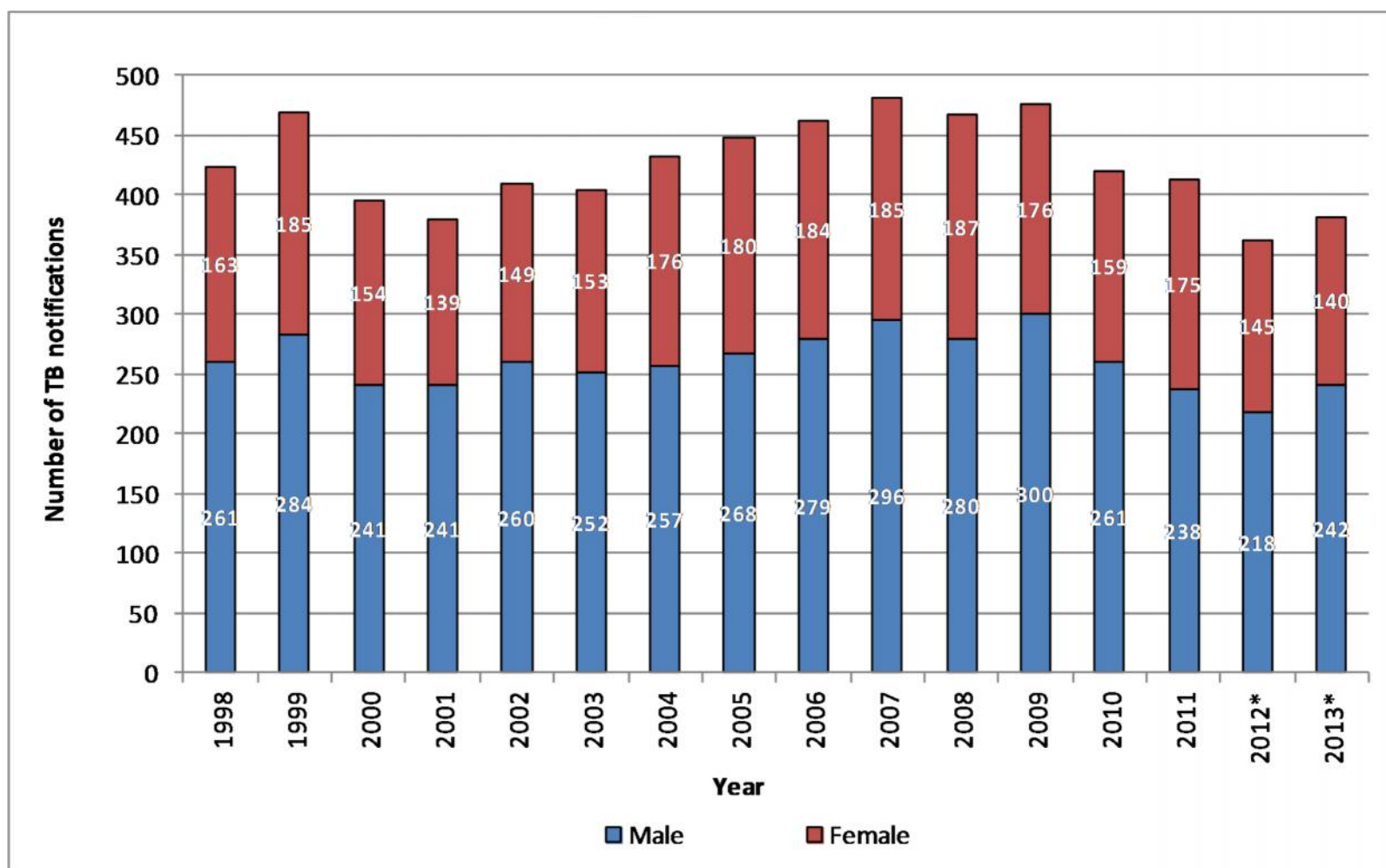
Age-specific rates of TB by year, 2000 – 2013*



*2012 and 2013 data are provisional data only



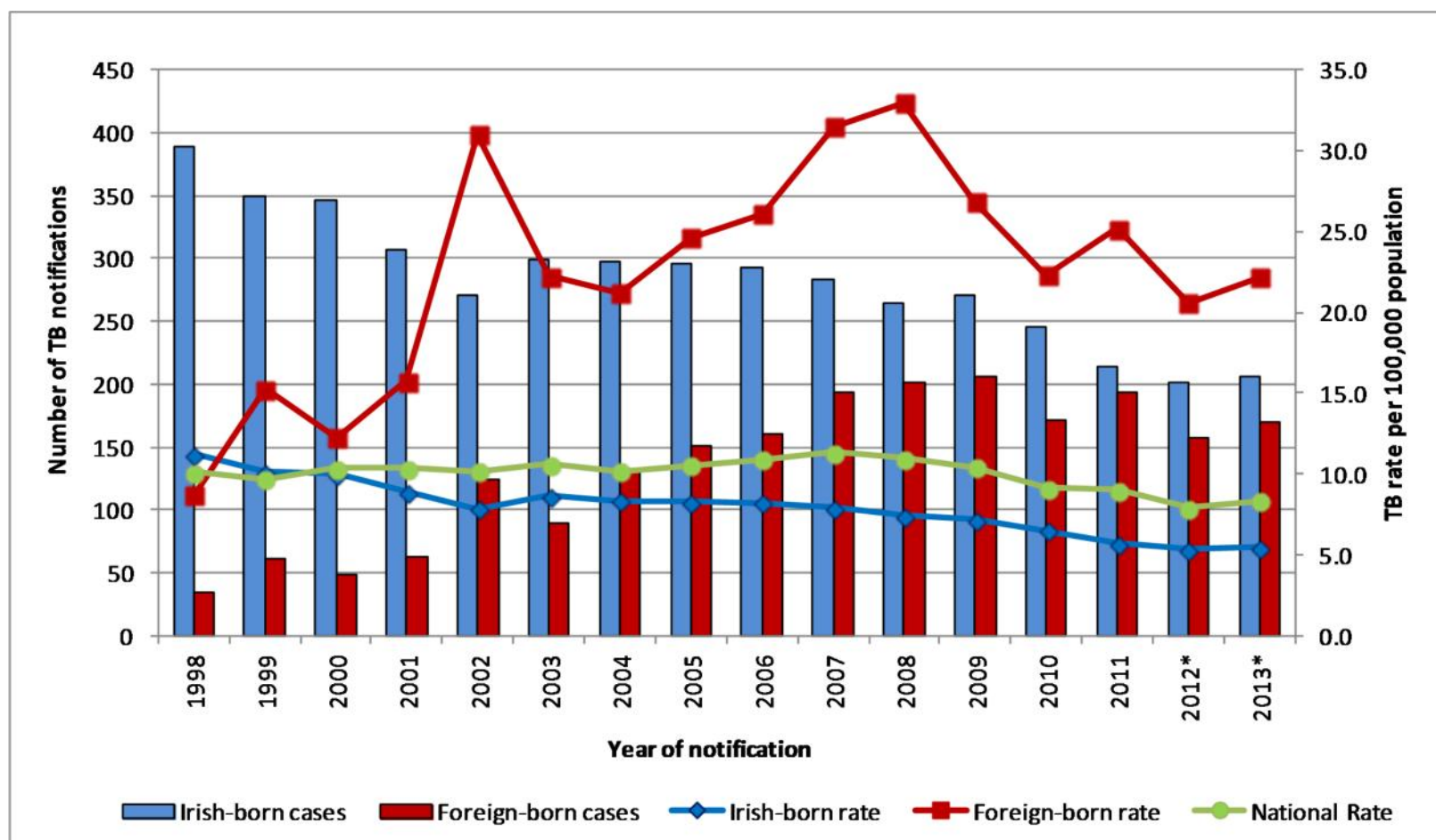
TB cases by sex and year, 1998 – 2013*



*2012 and 2013 data are provisional data only



TB cases and rate by geographic origin and year, 1998 – 2013*

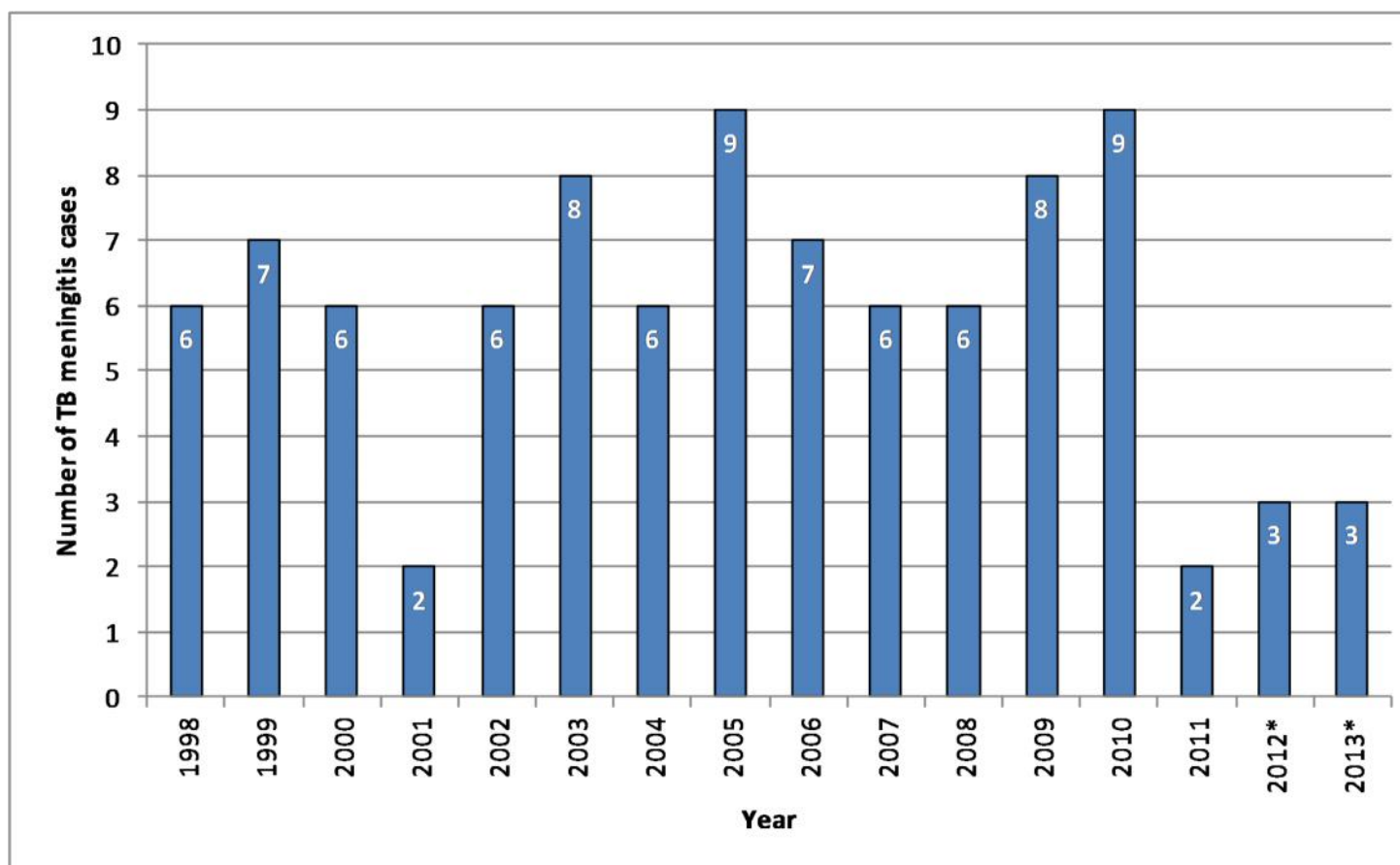


*2012 and 2013 data are provisional data only.

Country of birth unknown for 5 (1.4%) cases in 2012 and 8 (2.1%) in 2013.



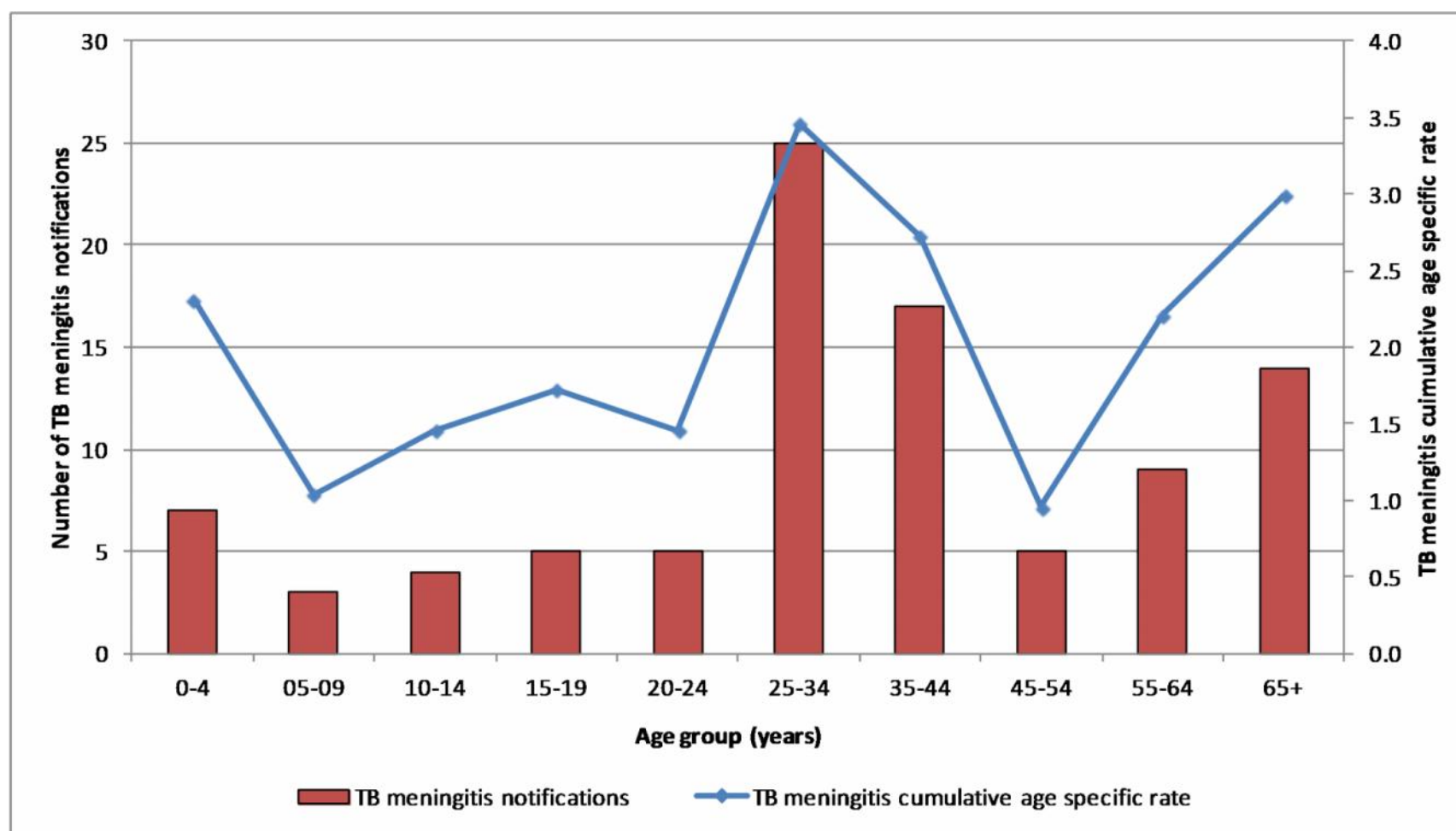
Number of TB meningitis cases by year, 1998 – 2013*



*2012 and 2013 data are provisional data only



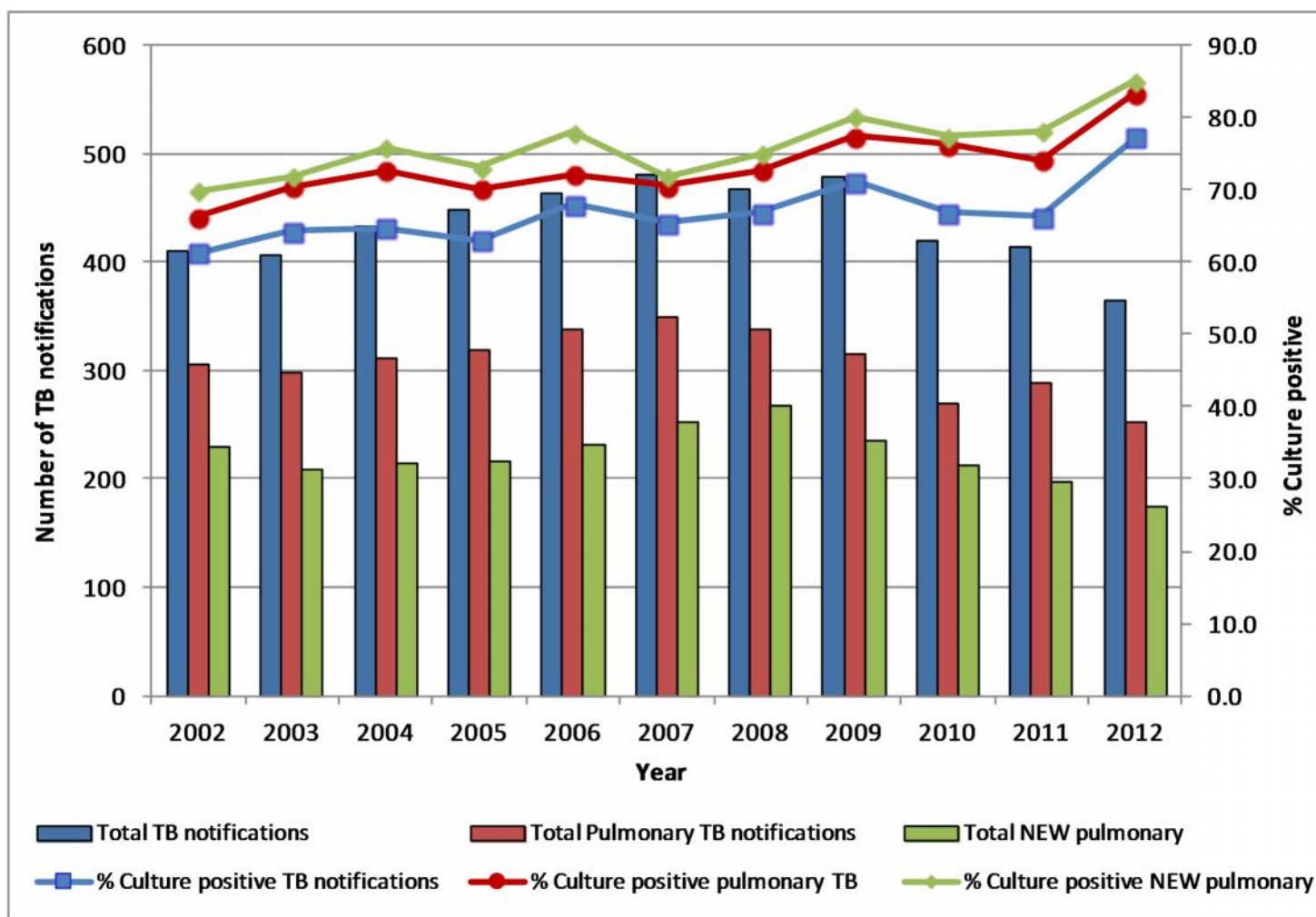
Cumulative number of TB meningitis cases by age group and cumulative age specific rate : 1998 – 2013*



*2012 and 2013 data are provisional data only



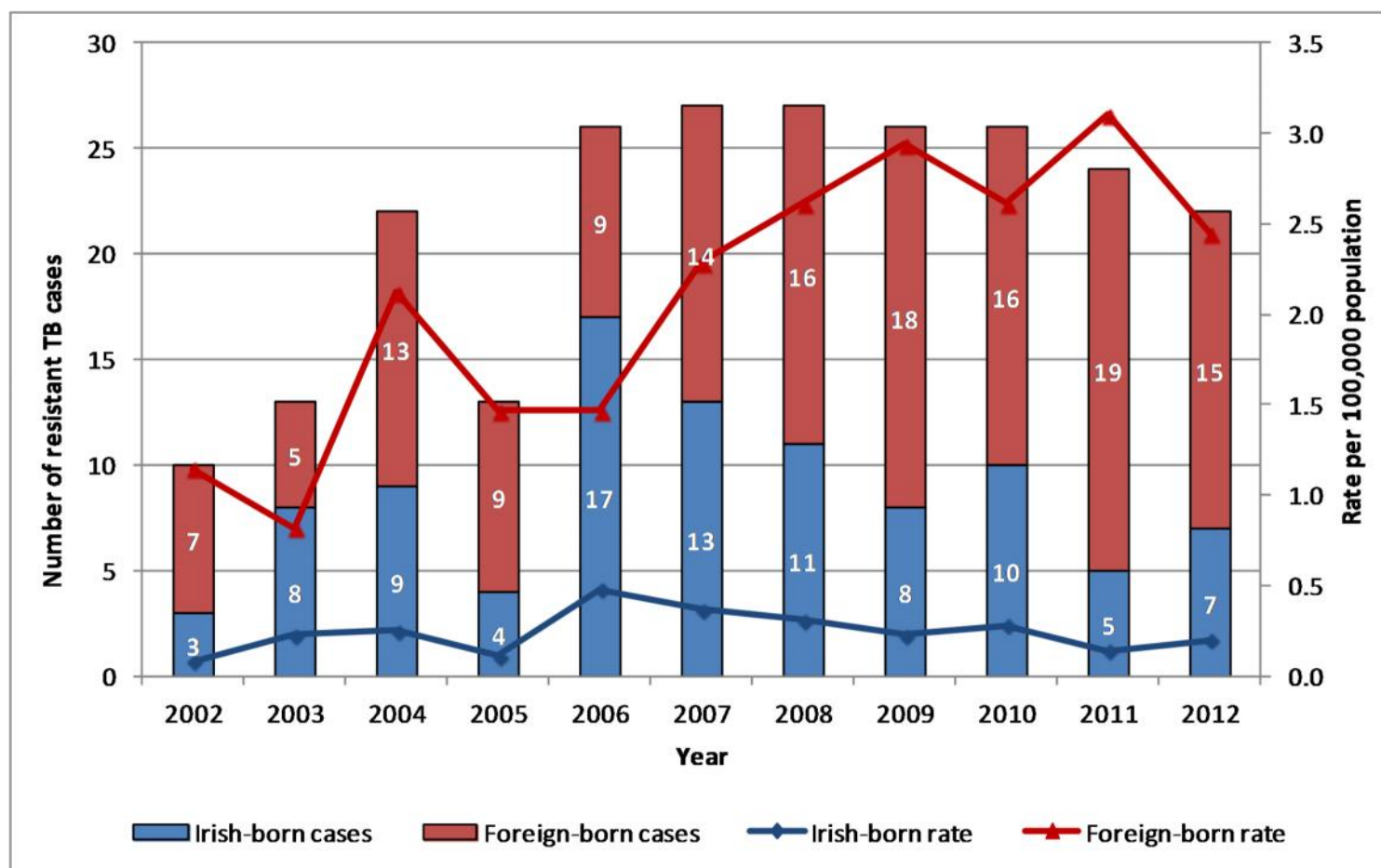
Number of TB cases and percentage culture positive by year, 2002 – 2012*



*2012 data are provisional data only



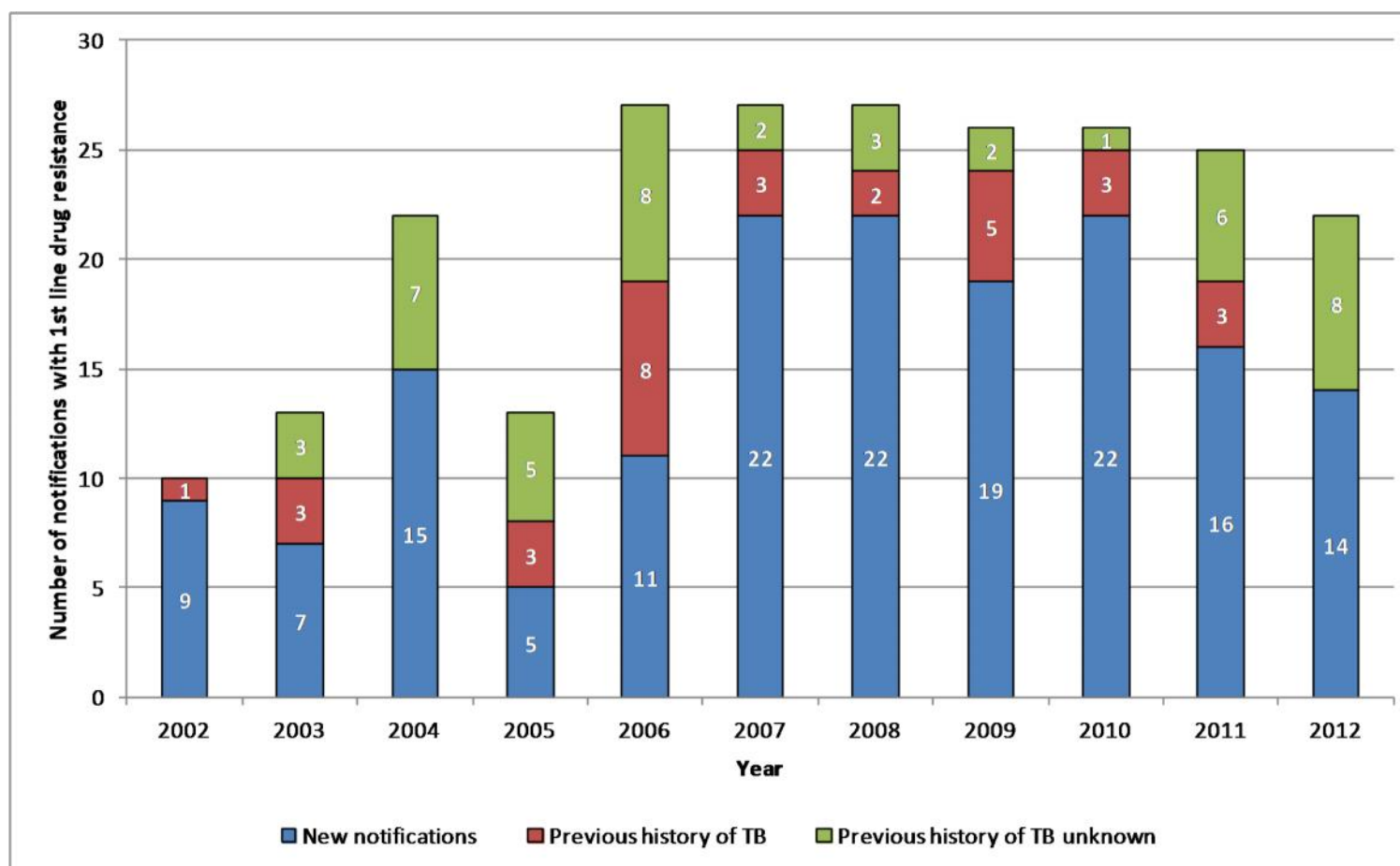
Number and rate of TB cases with resistance to any first line anti-TB drug by geographic origin and year, 2002 – 2012*



*2012 data are provisional data only



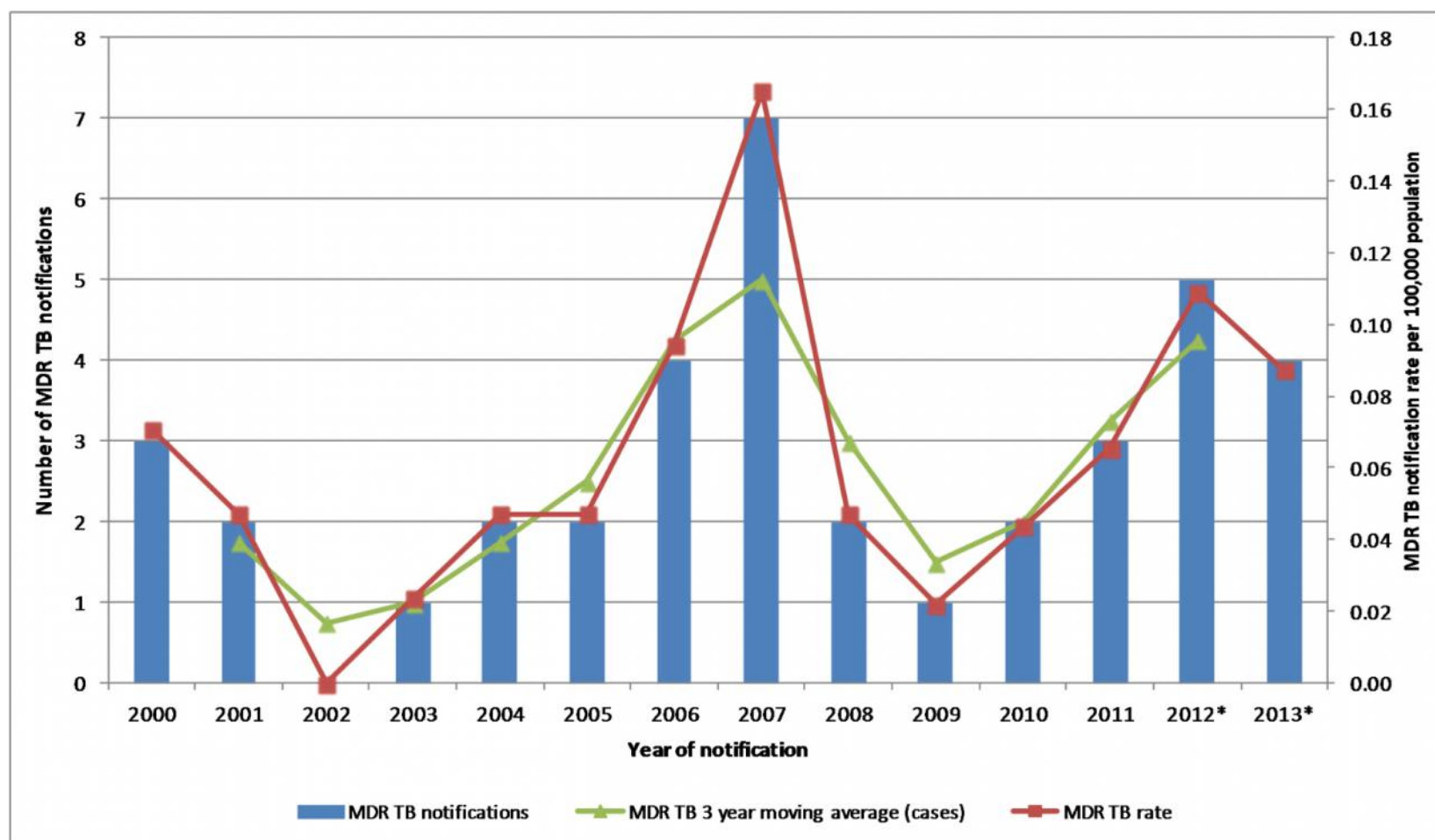
Number of TB cases with resistance to any first line anti-TB drug by previous history of TB and year, 2002 – 2012*



*2012 data are provisional data only



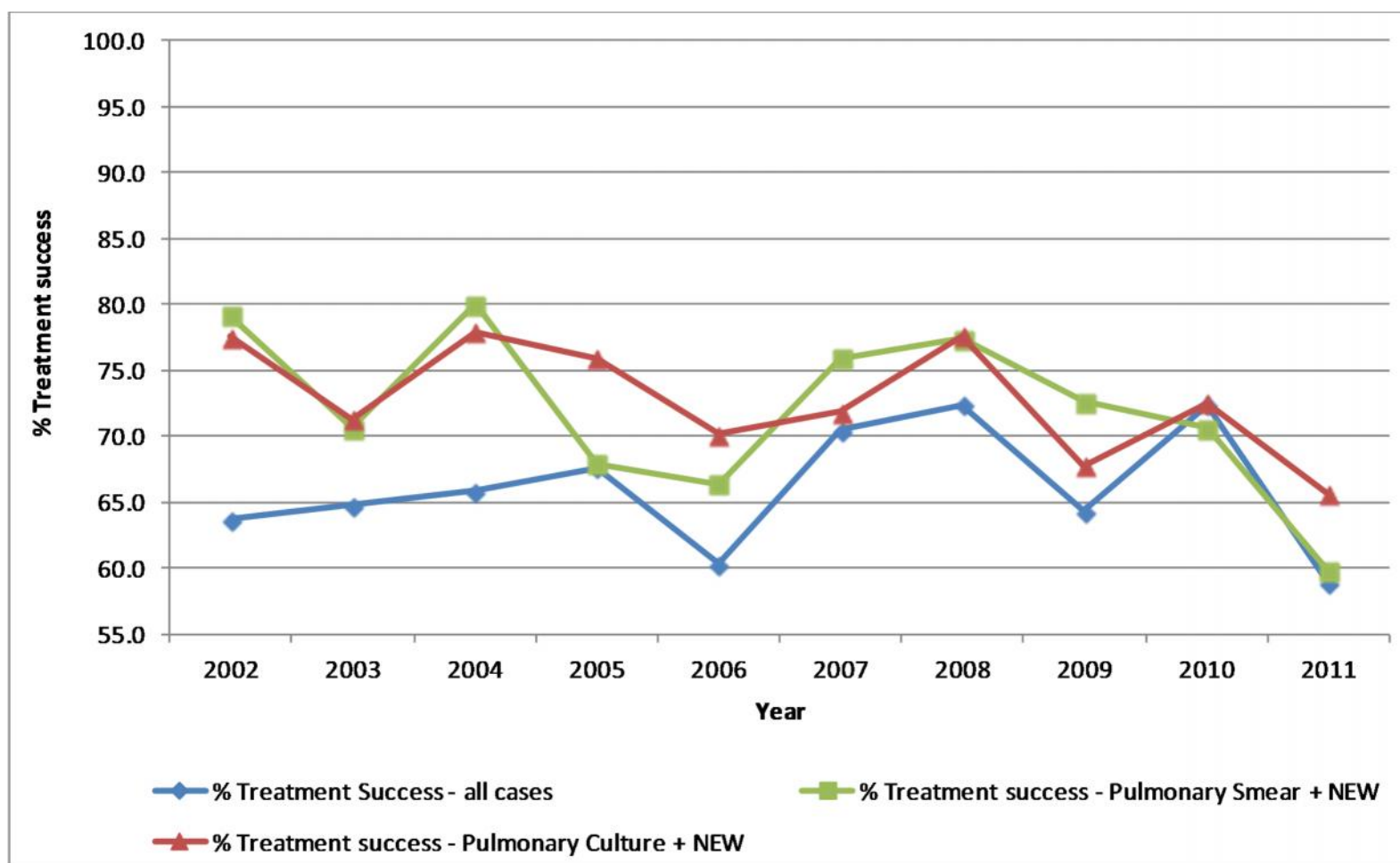
Number of MDR-TB cases, rate per 100,000 population and 3 year moving average by year; 2000 – 2013*



*2012 and 2013 data are provisional data only

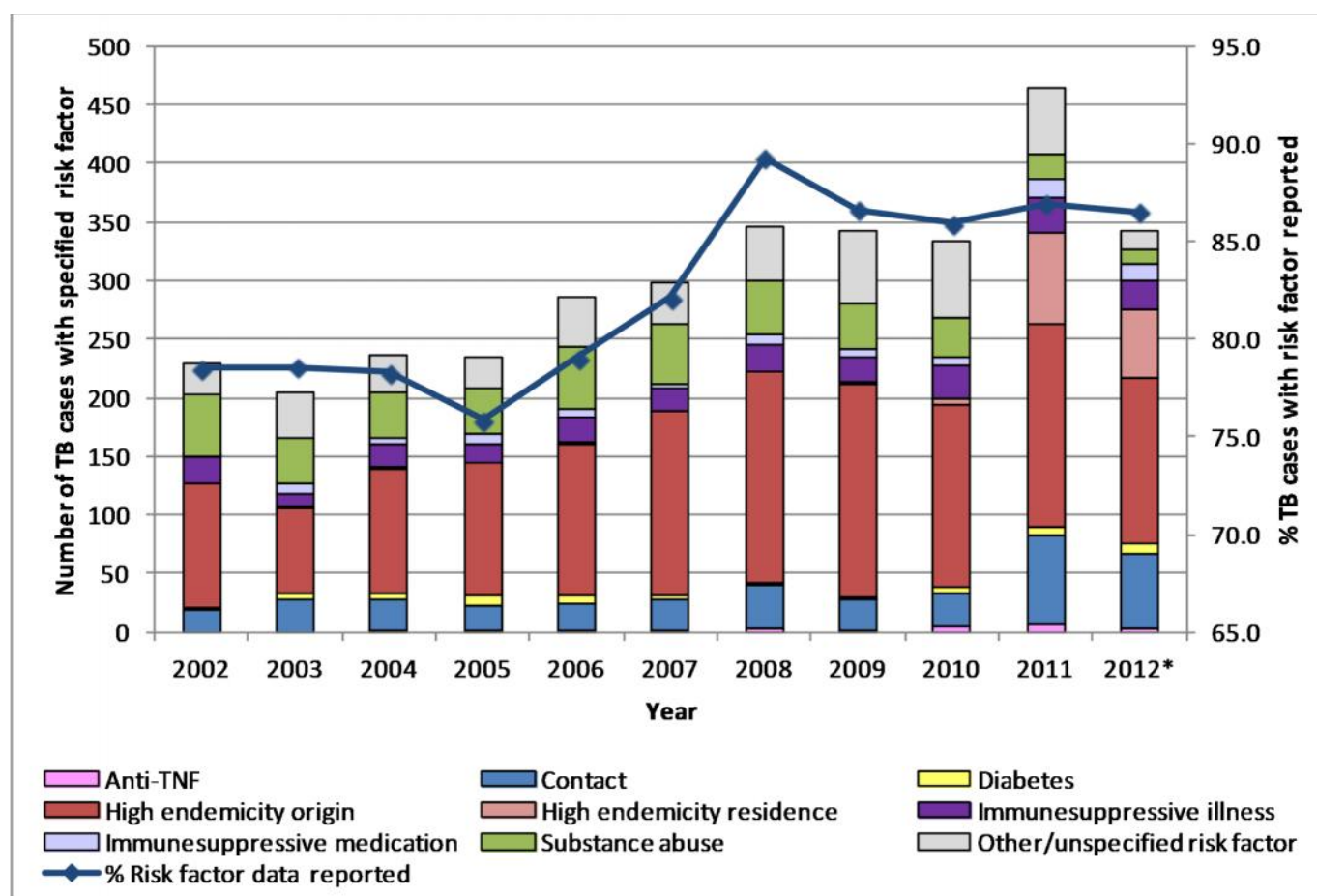


TB cases by percentage treatment success and year, 2002 - 2011





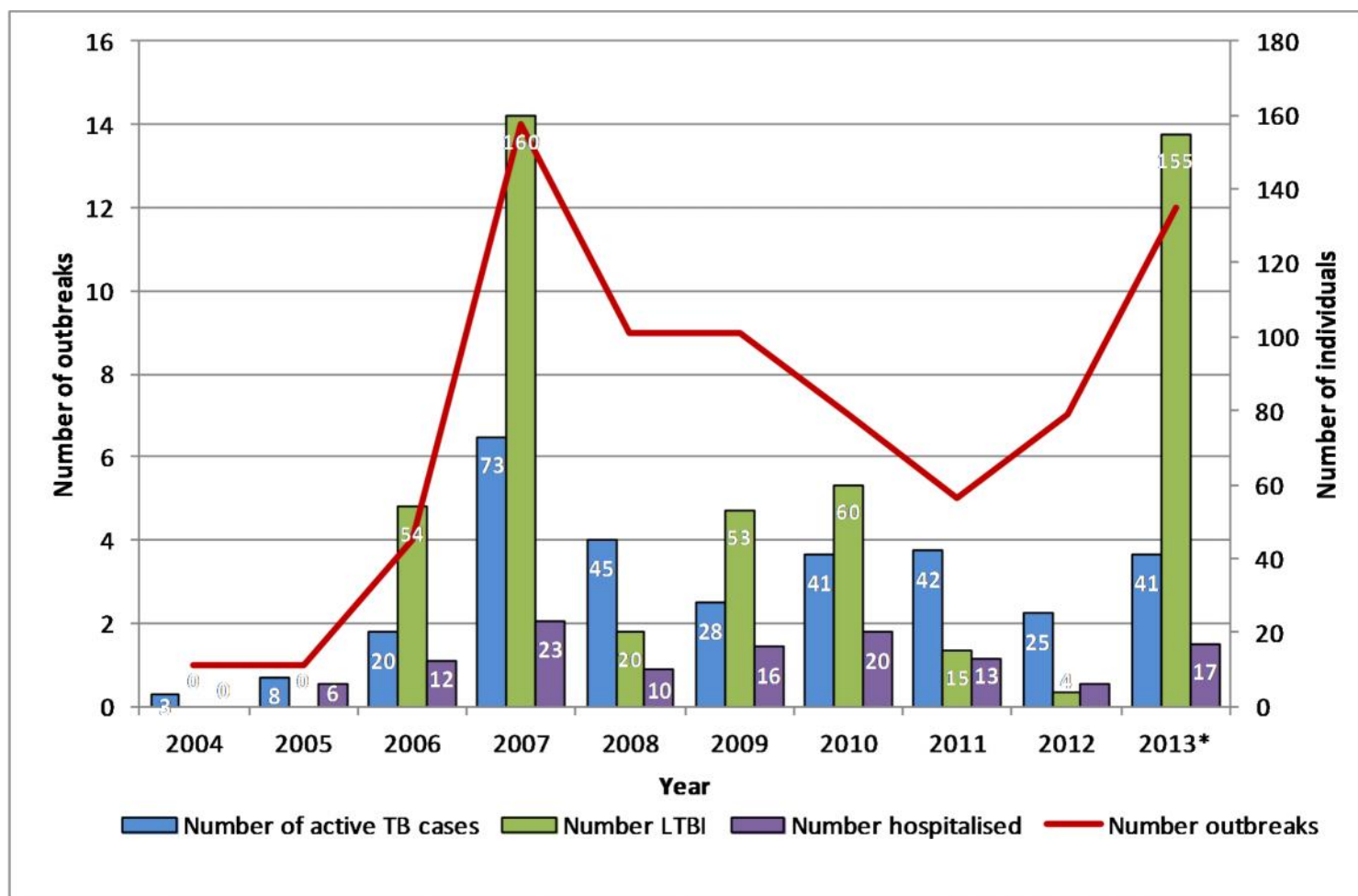
Number of TB cases with a TB risk factor reported and percentage with risk factor data reported by year, 2002 – 2012*



*2012 data are provisional data only



TB outbreaks summary by year, 2004 – 2013*



*2013 data are provisional data only



Data completeness of key variables, 2011

Variable	% Complete
Age	99.8
Sex	100.0
Diagnostic type	99.5
Country of birth (all notifications)	98.5
Sputum smear result (pulmonary cases)	88.2
Culture result	80.4
Isolate (Culture positive cases)	100.0
Isoniazid sensitivity result (Culture positive cases)	93.1
Rifampicin sensitivity result (Culture positive cases)	92.0
Case finding method	93.9
Treatment outcome	74.8
Risk group	86.9
Previous history of TB (all cases)	74.1
Previous year of TB diagnosis (previously diagnosed cases)	80.0
Previous TB treatment history (previously diagnosed cases)	64.0
Previous TB treatment outcome (previously treated cases)	58.3
HIV status	33.2

[1]

[2]



Provisional epidemiology of TB in Ireland, 2012*

Parameter	2012 (% of total)
Total number of cases	364
Crude notification rate per 100,000	7.9
Cases in indigenous population**	201 (55.2%)
Cases in foreign-born persons	158 (43.4%)
Culture positive cases	281 (77.2%)
Pulmonary cases	253 (69.5%)
Of which sputum smear positive	116 (45.8%)
Resistant cases	22 (6.0%)
Multidrug-resistant cases	5 (1.4%)
TB meningitis cases	3 (0.8%)

*2012 data are provisional data only

** Country of birth unknown for 5 (1.4%) of cases



For further information on the epidemiology of tuberculosis in Ireland,
please see our website:

[http://www.ndsc.ie/hpsc/A-
Z/VaccinePreventable/TuberculosisTB/Epidemiology/SurveillanceReports/](http://www.ndsc.ie/hpsc/A-Z/VaccinePreventable/TuberculosisTB/Epidemiology/SurveillanceReports/)