



Féidhmeannacht na Seirbhíse Sláinte
Health Service Executive



Health Protection Surveillance Centre
Lárionad Faire um Chosaint Sláinte



Epidemiology of Tuberculosis in Ireland, 2010



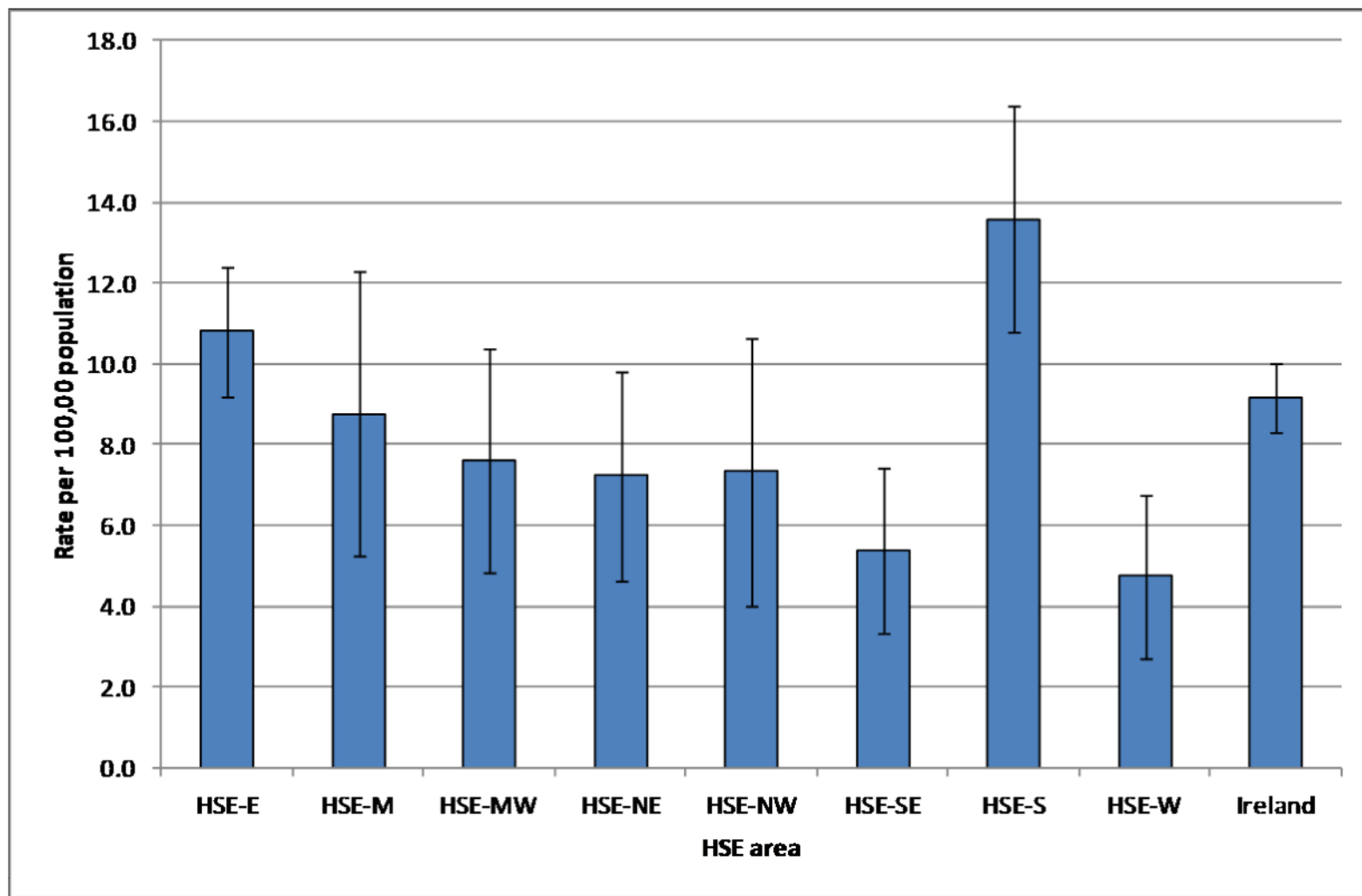
Summary of the epidemiology of TB in Ireland, 2010

Parameter	Number (Rate/100,000)	% of Total
Total cases	420 (9.2)	-
Cases in indigenous population*	246 (6.5)	58.6
Cases in foreign-born persons*	171 (22.3)	40.7
Culture positive cases	281	66.9
Pulmonary cases	270	64.3
Smear positive pulmonary cases	111	26.4
Multidrug-resistant cases	2	0.5
Mono-resistant to isoniazid	10	2.4
Deaths attributable to TB	8	1.9
Outcomes reported in cases	370	88.1
TB meningitis cases	9	2.1

* Country of birth was unknown for 3 (0.7%) cases

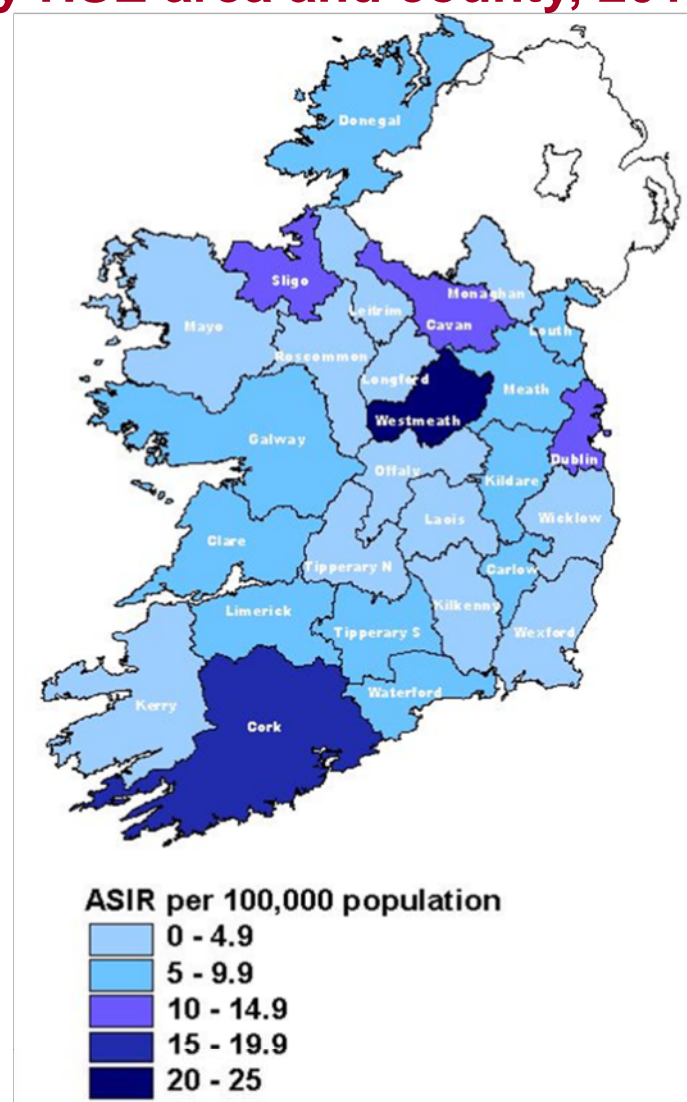
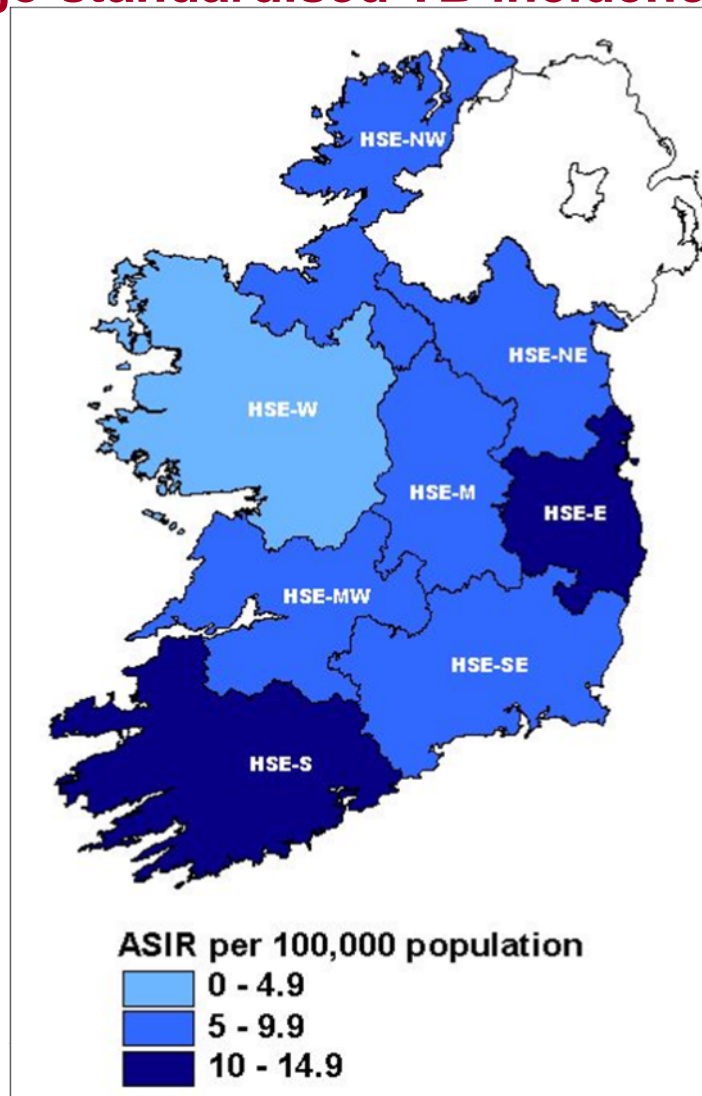


Age-standardised TB incidence rates by HSE area with 95% confidence intervals; 2010



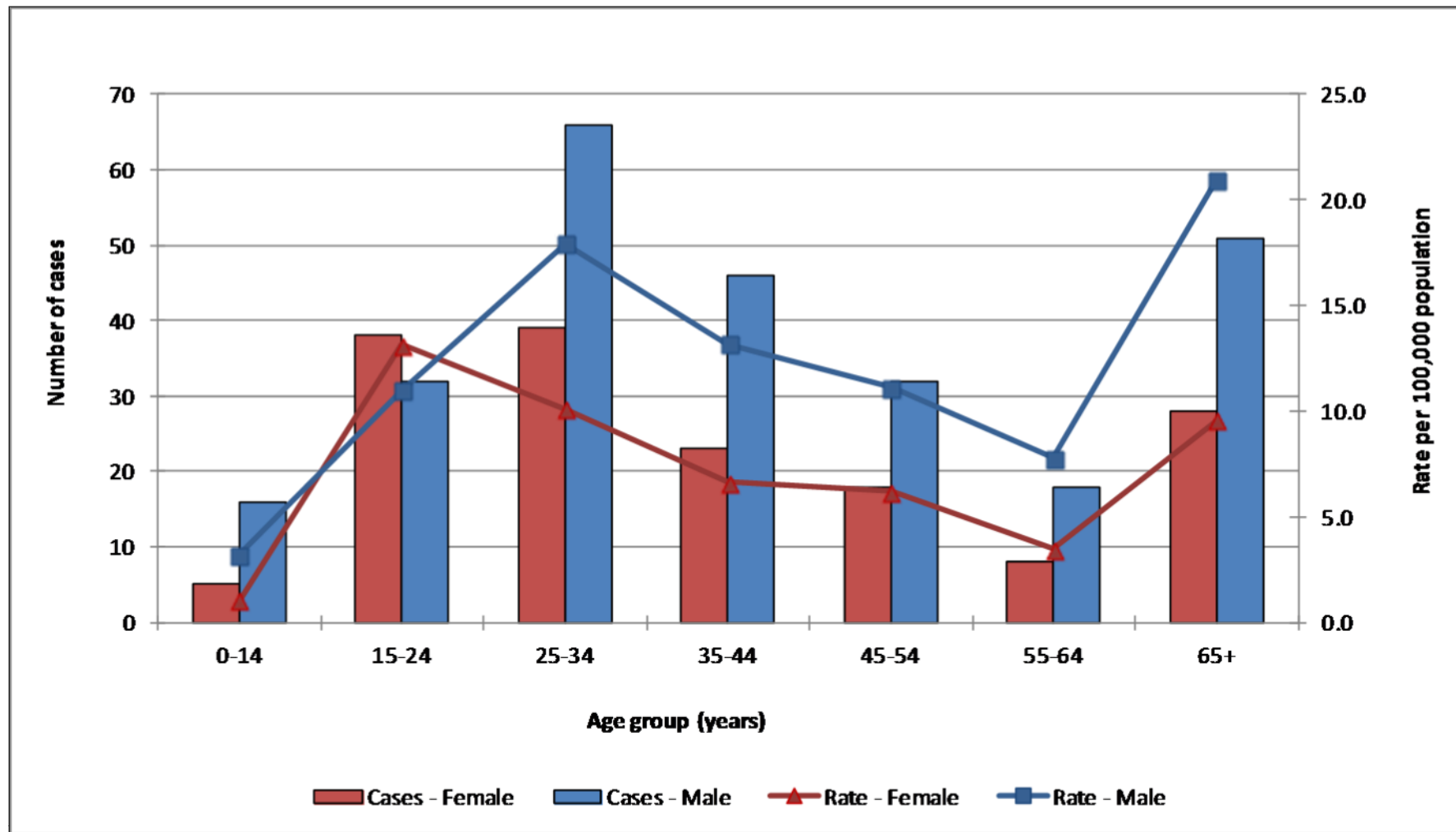


Age-standardised TB incidence rates by HSE area and county, 2010



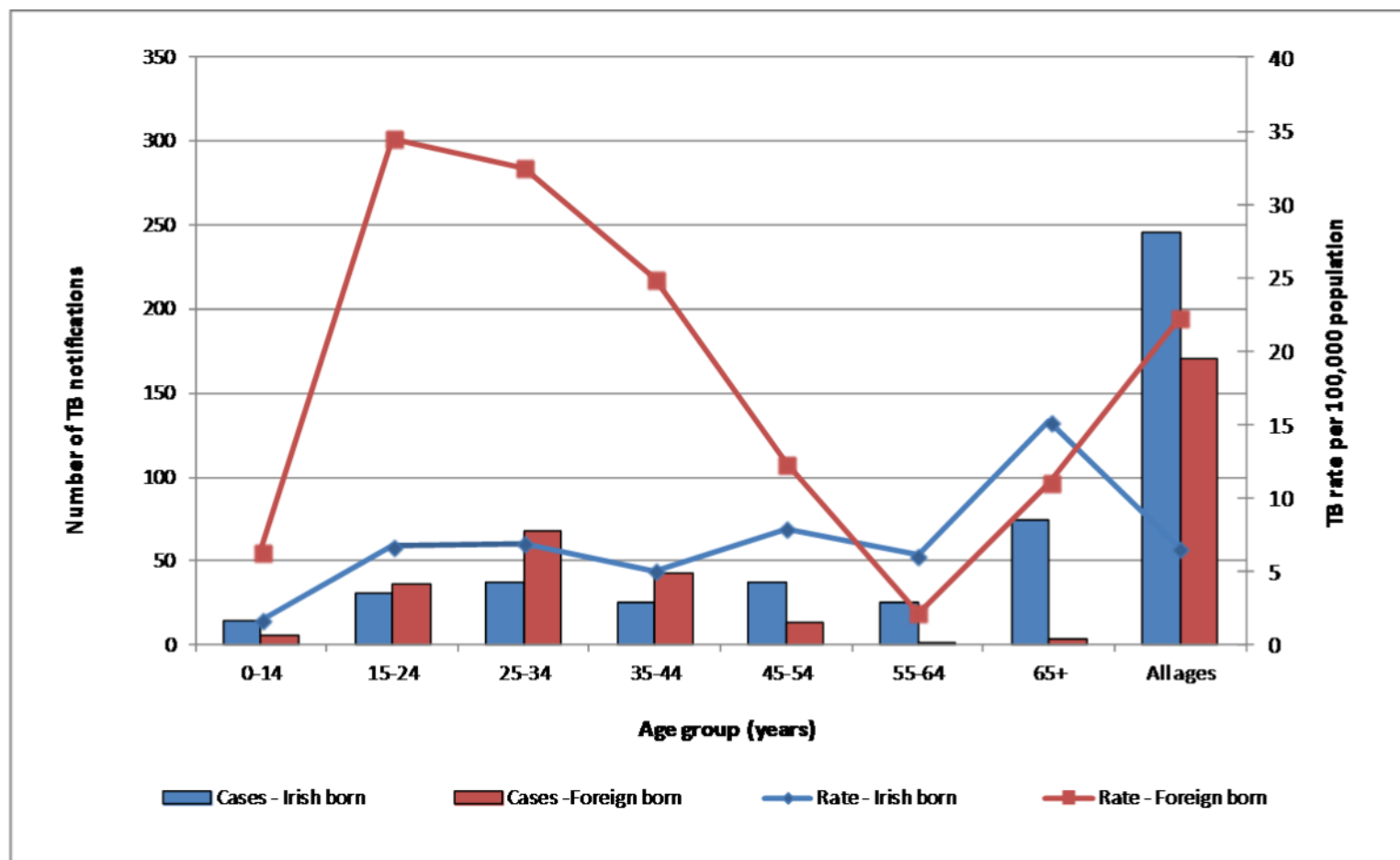


TB cases by age & sex, and age-specific rates; 2010





TB cases by age group and age specific rates by geographic origin, 2010





TB cases and rate per 100,000 population by geographic origin & HSE area, 2010

HSE Area	Irish-born			Foreign-born			Unknown	Total
	Cases	%	Rate	Cases	%	Rate		
HSE-E	82	45.6	6.4	95	52.8	31.4	3	180
HSE-M	14	58.3	5.8	10	41.7	24.1	0	24
HSE-MW	22	75.9	6.9	7	24.1	13.2	0	29
HSE-NE	19	63.3	5.2	11	36.7	14.6	0	30
HSE-NW	14	73.7	6.9	5	26.3	9.8	0	19
HSE-SE	15	55.6	3.5	12	44.4	17.9	0	27
HSE-S	66	73.3	11.9	24	26.7	23.9	0	90
HSE-W	14	66.7	3.9	7	33.3	9.2	0	21
Ireland	246	58.6	6.5	171	40.7	22.3	3	420



TB cases by HSE area and site of disease, 2010

HSE area	Pulmonary only		Extrapulmonary only		Pulmonary + Extrapulmonary	
	Cases	% of total	Cases	% of total	Cases	% of total
HSE-E	104	57.8	62	34.4	14	7.8
HSE-M	14	58.3	9	37.5	1	4.2
HSE-MW	19	65.5	10	34.5	0	0.0
HSE-NE	20	66.7	9	30.0	1	3.3
HSE-NW	10	52.6	9	47.4	0	0.0
HSE-SE	15	55.6	8	29.6	4	14.8
HSE-S	50	55.6	34	37.8	6	6.7
HSE-W	10	47.6	9	42.9	2	9.5
Total	242	57.6	150	35.7	28	6.7



Summary of anti-TB drug resistance, 2010

DST results	Number of cases	% of culture confirmed cases
Cases with DST results	275	97.9
Resistant cases	26	9.3
MDR-TB	2	0.7
Mono-resistance to Isoniazid	10	3.6
Mono-resistance to Rifampicin	2	0.7
Mono-resistance to Pyrazinamide	1	0.4
Mono-resistance to Ethambutol	1	0.4
Mono-resistance to Streptomycin	5	1.8
Cases resistant to Isoniazid and Streptomycin	3	1.1
Cases resistant to Pyrazinamide and Ethambutol	1	0.4
Cases resistant to Isoniazid, Pyrazinamide, Ethambutol and Streptomycin	1	0.4

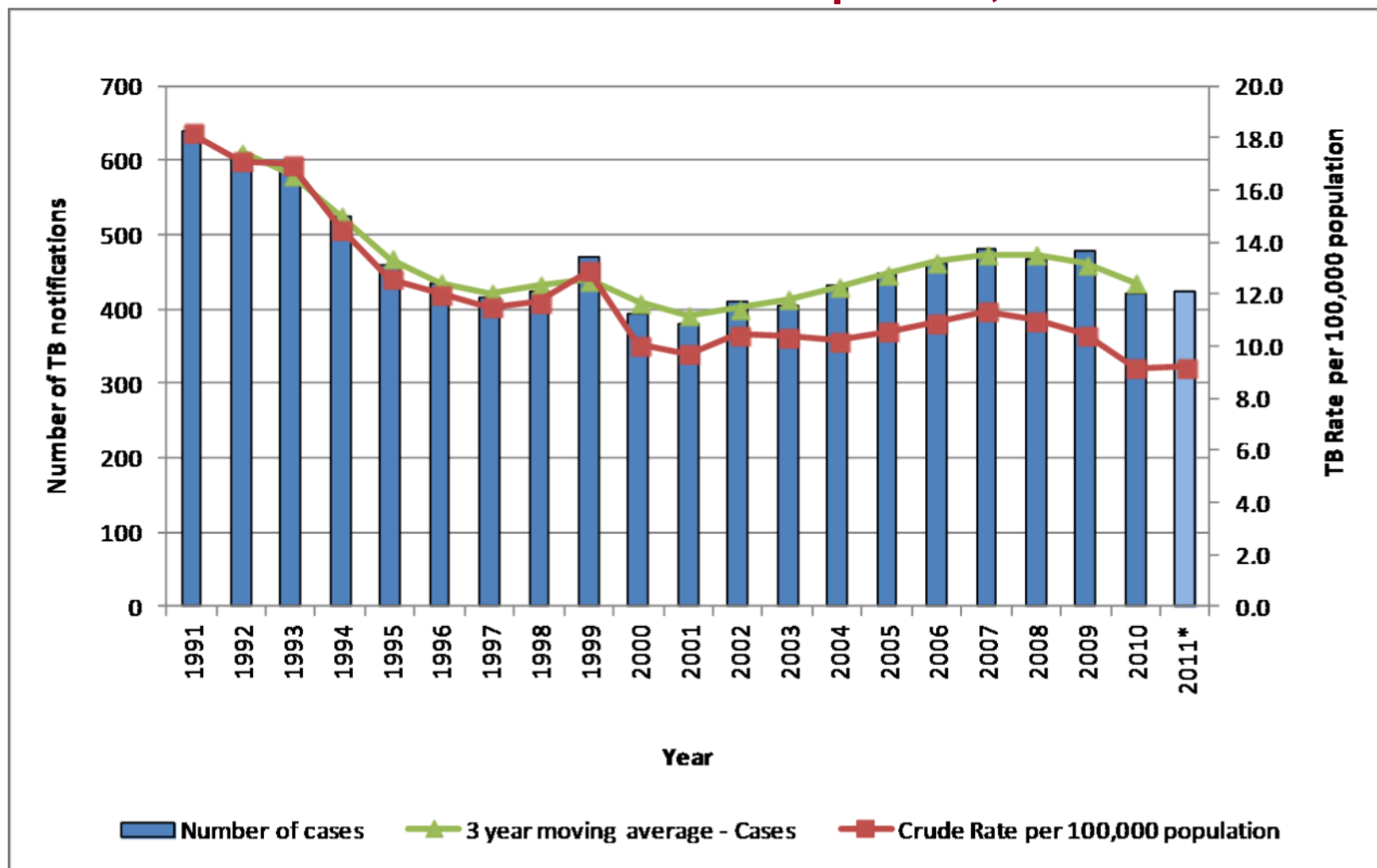


Treatment outcome for TB cases, 2010

Treatment outcome	Total		Smear Positive	
	Number	%	Number	%
Completed	304	72.4	79	71.2
Lost to follow up	30	7.1	6	5.4
Died (not attributed to TB)	16	3.8	6	5.4
Still on treatment	2	0.5	0	0.0
Died (attributed to TB)	8	1.9	2	1.8
Interrupted (>2mths)	7	1.7	2	1.8
Died (cause unknown)	3	0.7	1	0.9
Unknown	50	11.9	15	13.5
Total	420	100.0	111	100.0



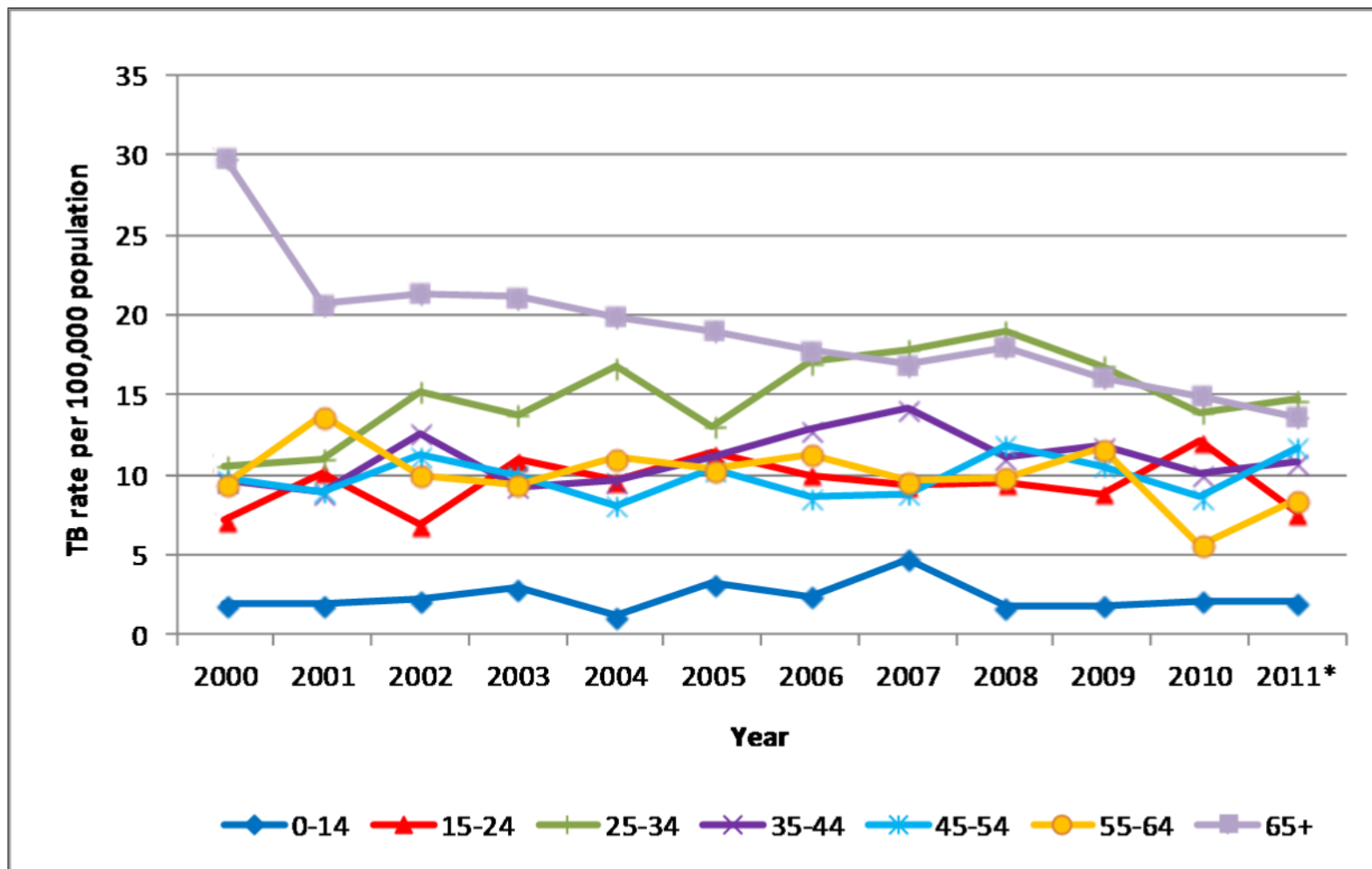
Number of TB cases and crude rate per 100,000: 1991 to 2011*



*2011 data are provisional data only



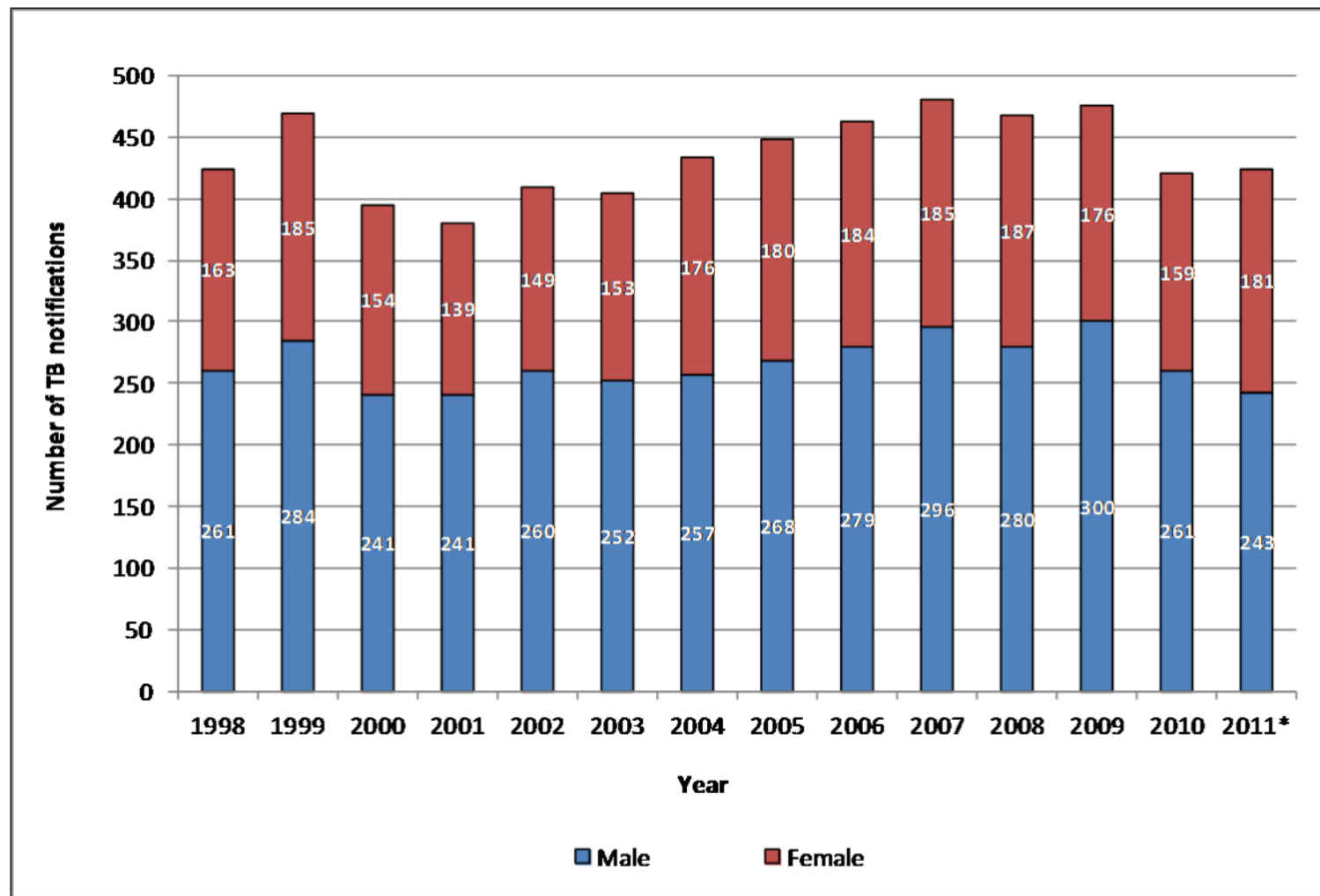
Age-specific rates of TB by year, 2000 – 2011*



*2011 data are provisional data only



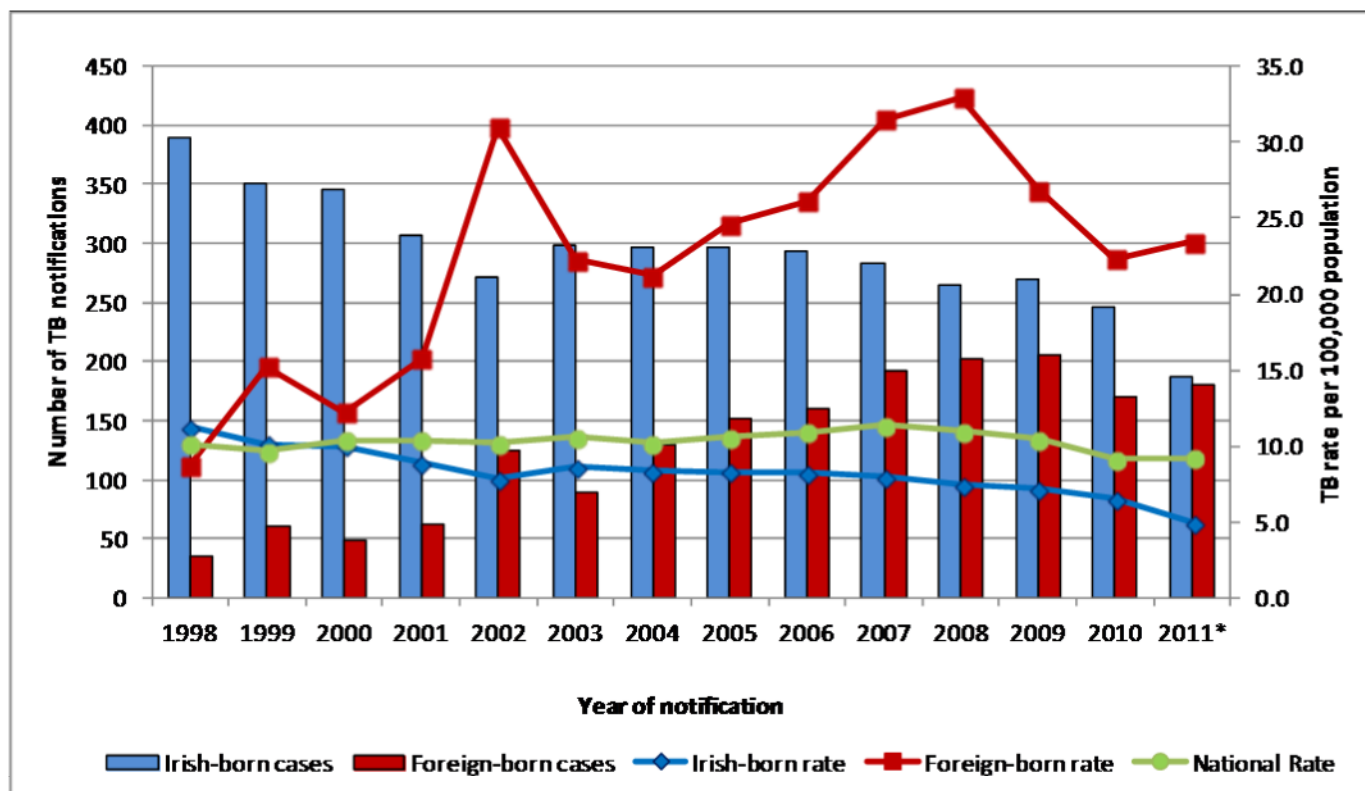
TB cases by sex and year, 1998 – 2011*



*2011 data are provisional data only



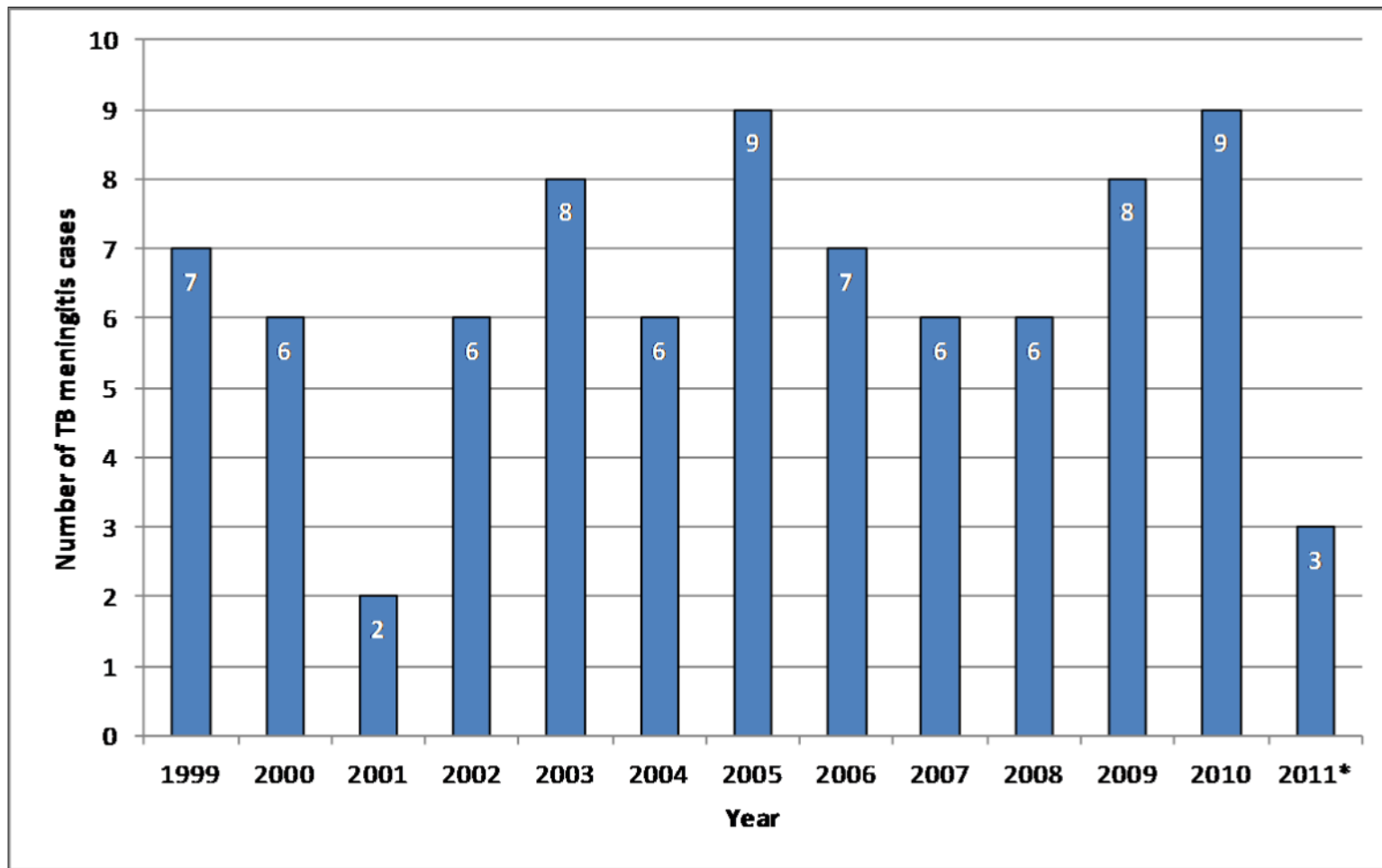
TB cases and rate by geographic origin and year, 1998 – 2011*



*2011 data are provisional data only. Country of birth unknown for 56 cases (13.2%) in 2011.



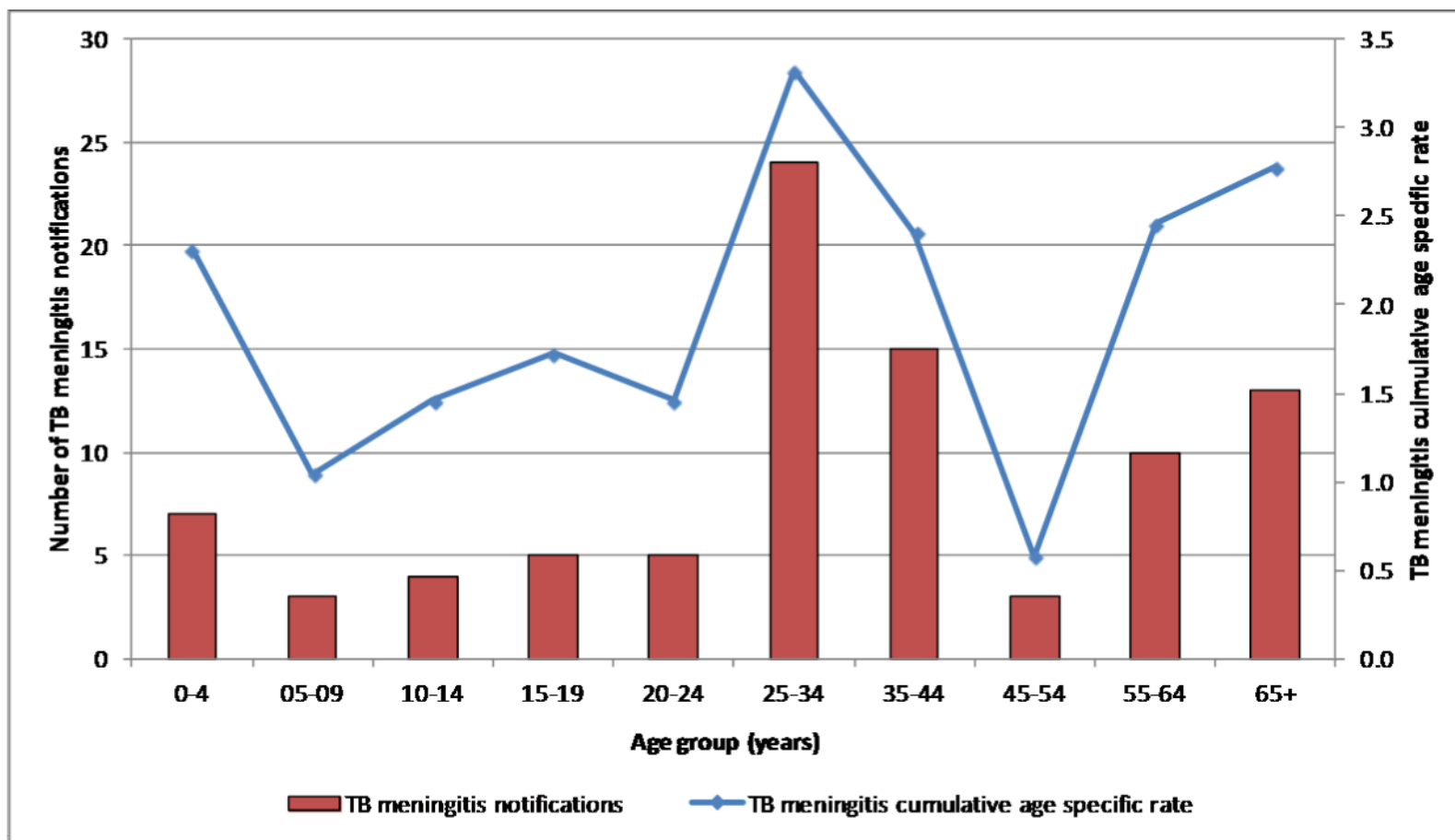
Number of TB meningitis cases by year, 1998 – 2011*



*2011 data are provisional data only

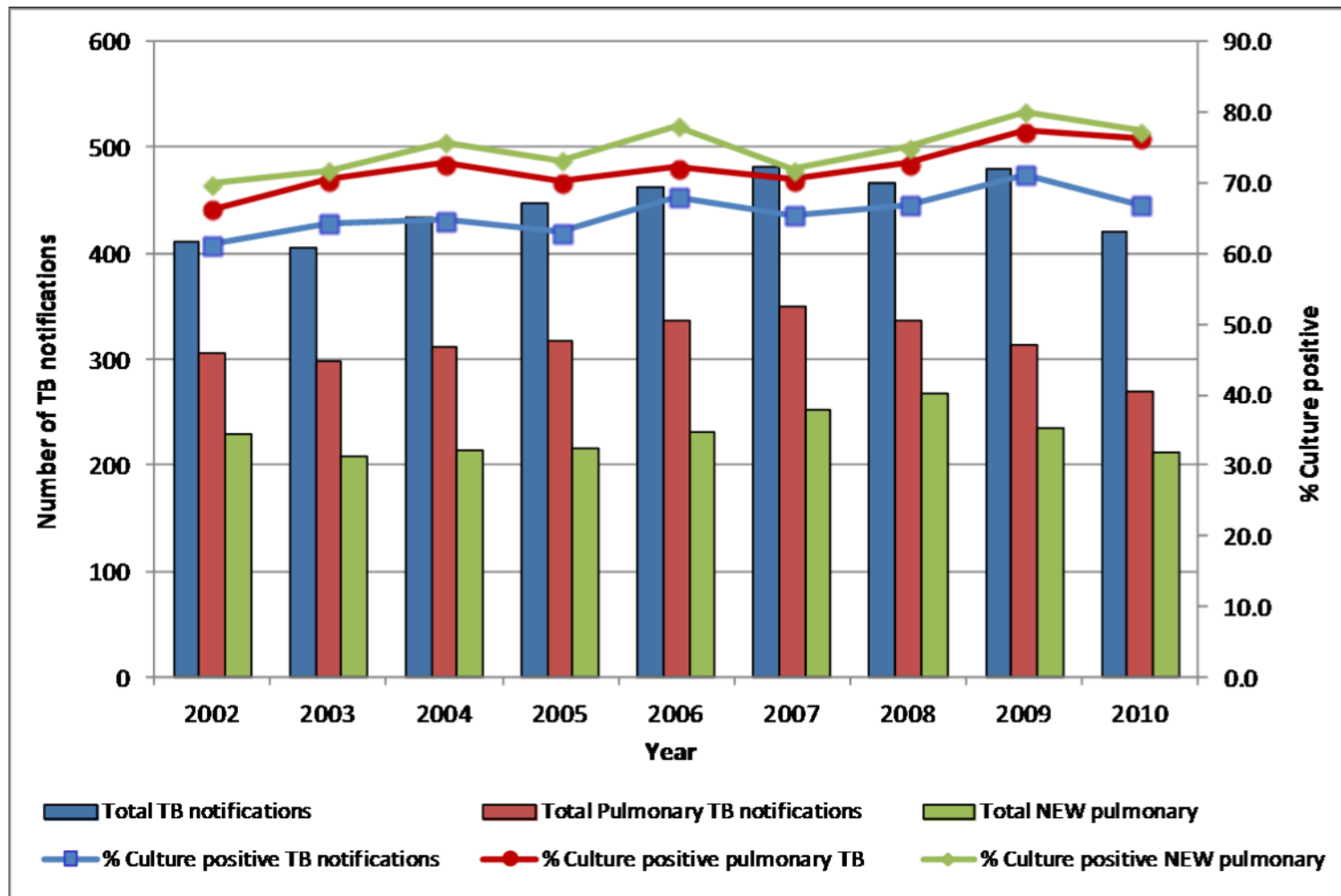


Cumulative number of TB meningitis cases by age group and cumulative age specific rate : 1998 – 2011*



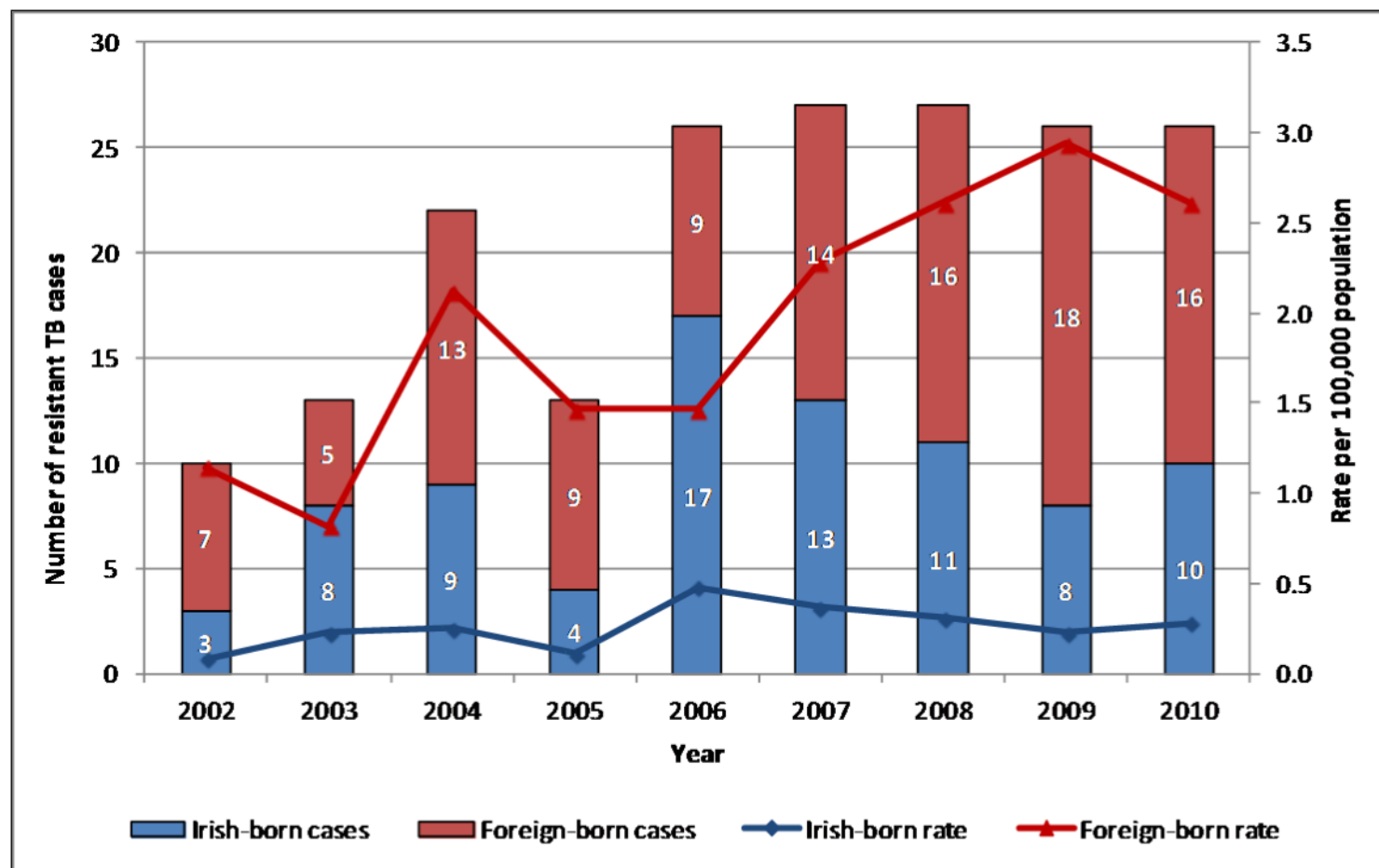


Number of TB cases and percentage culture positive by year, 2002 - 2010



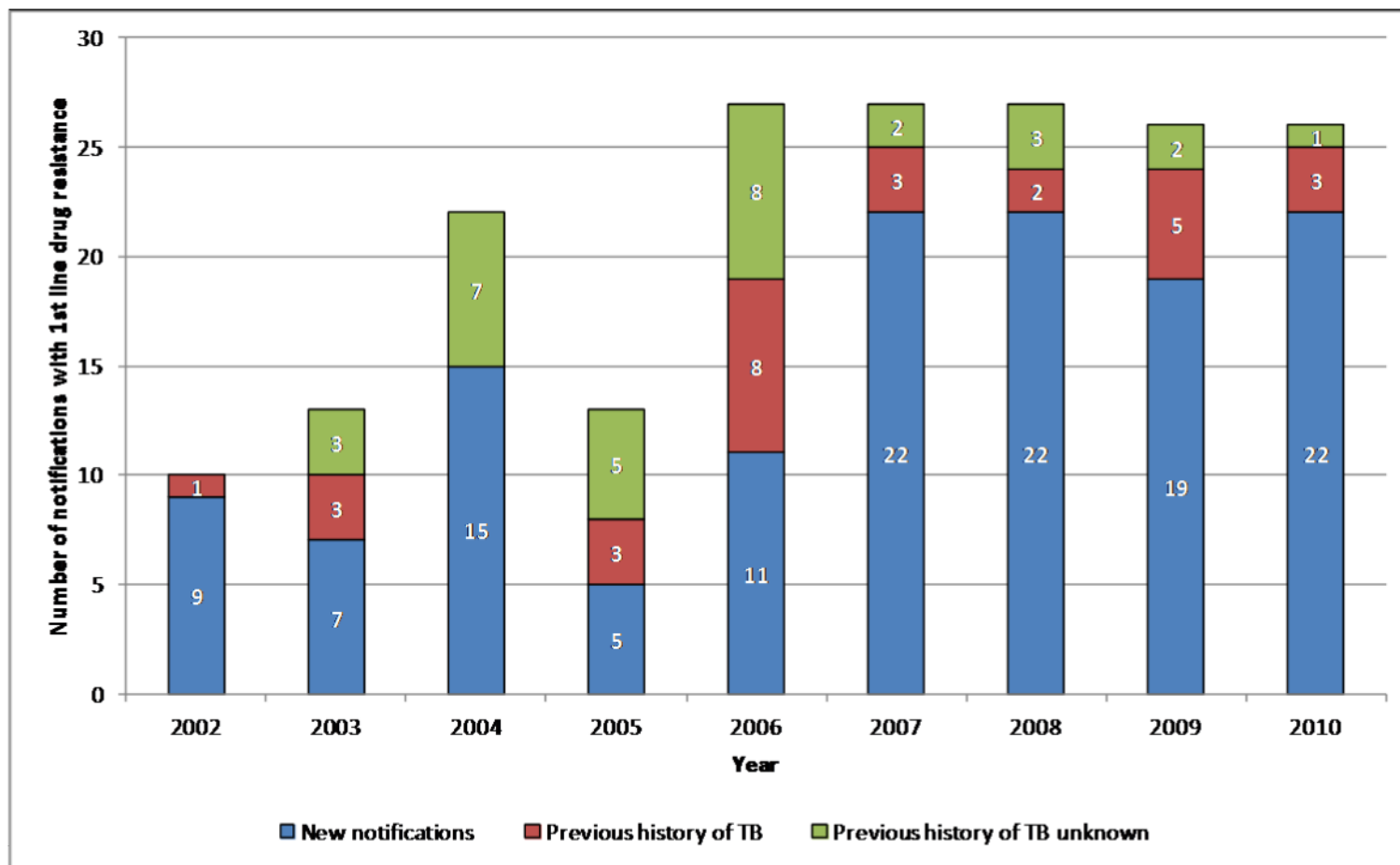


Number and rate of TB cases with resistance to any first line anti-TB drug by geographic origin and year, 2002 - 2010



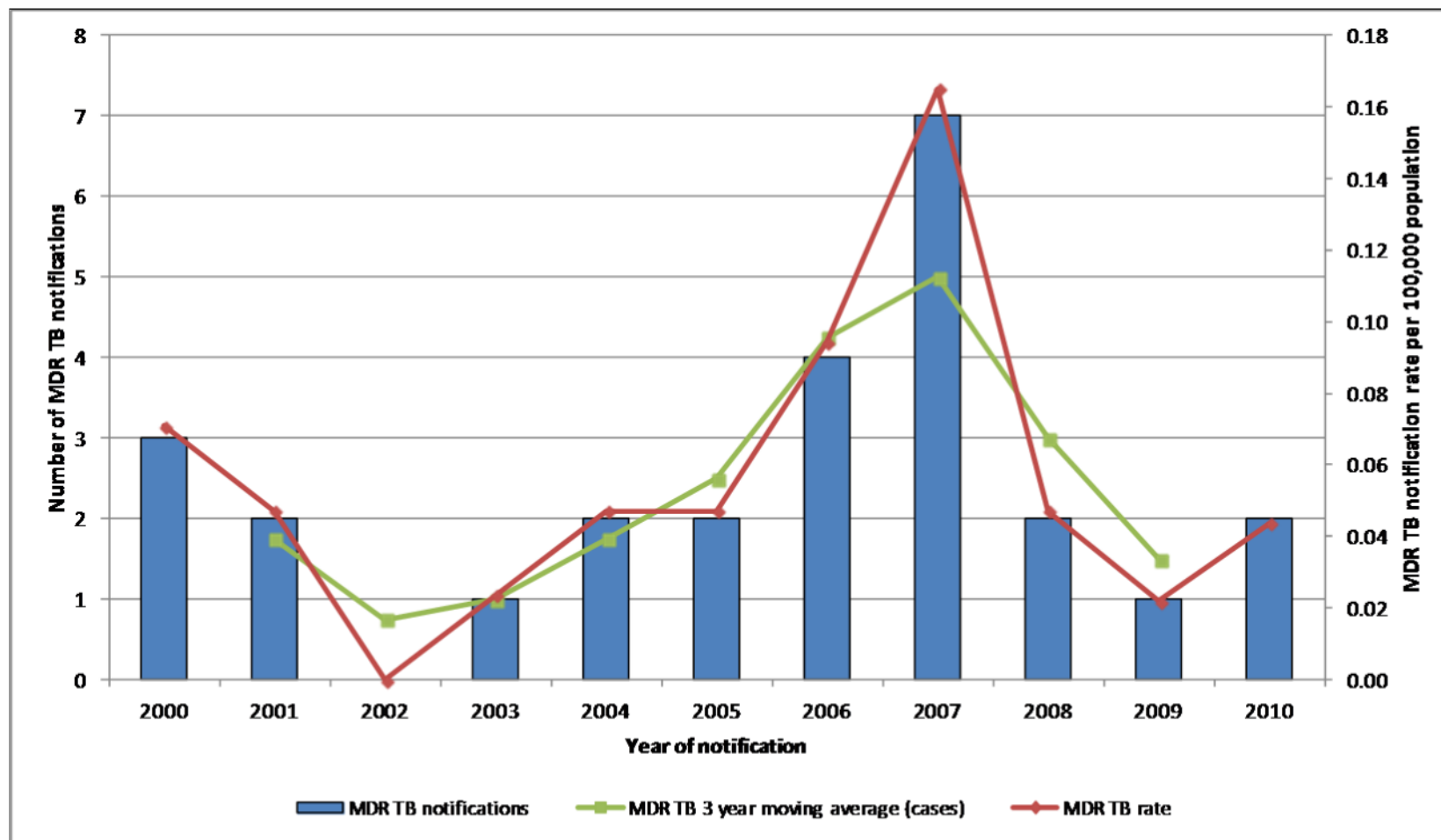


Number of TB cases with resistance to any first line anti-TB drug by previous history of TB and year, 2002 - 2010



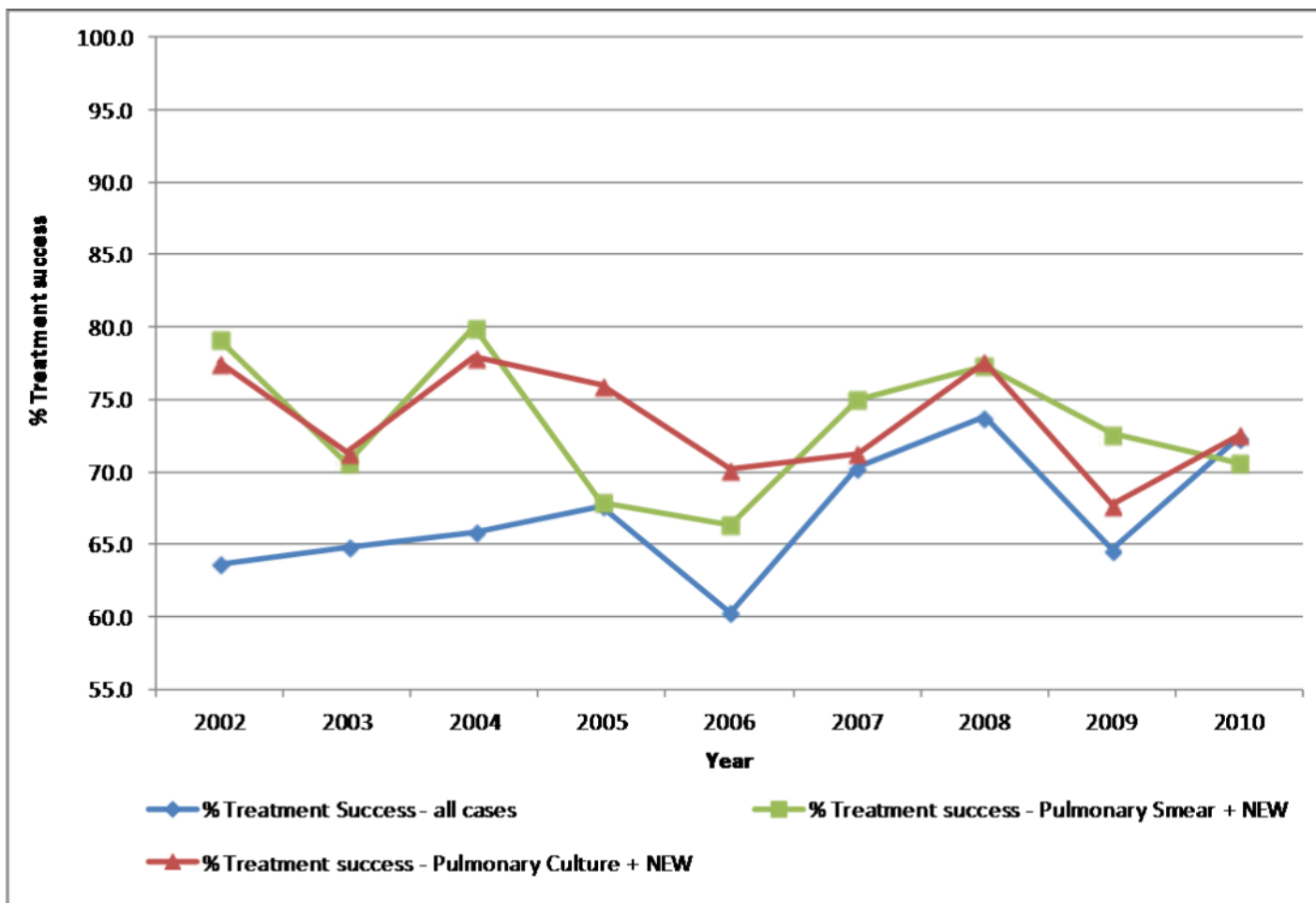


Number of MDR-TB cases, rate per 100,000 population and 3 year moving average by year; 2000 - 2010



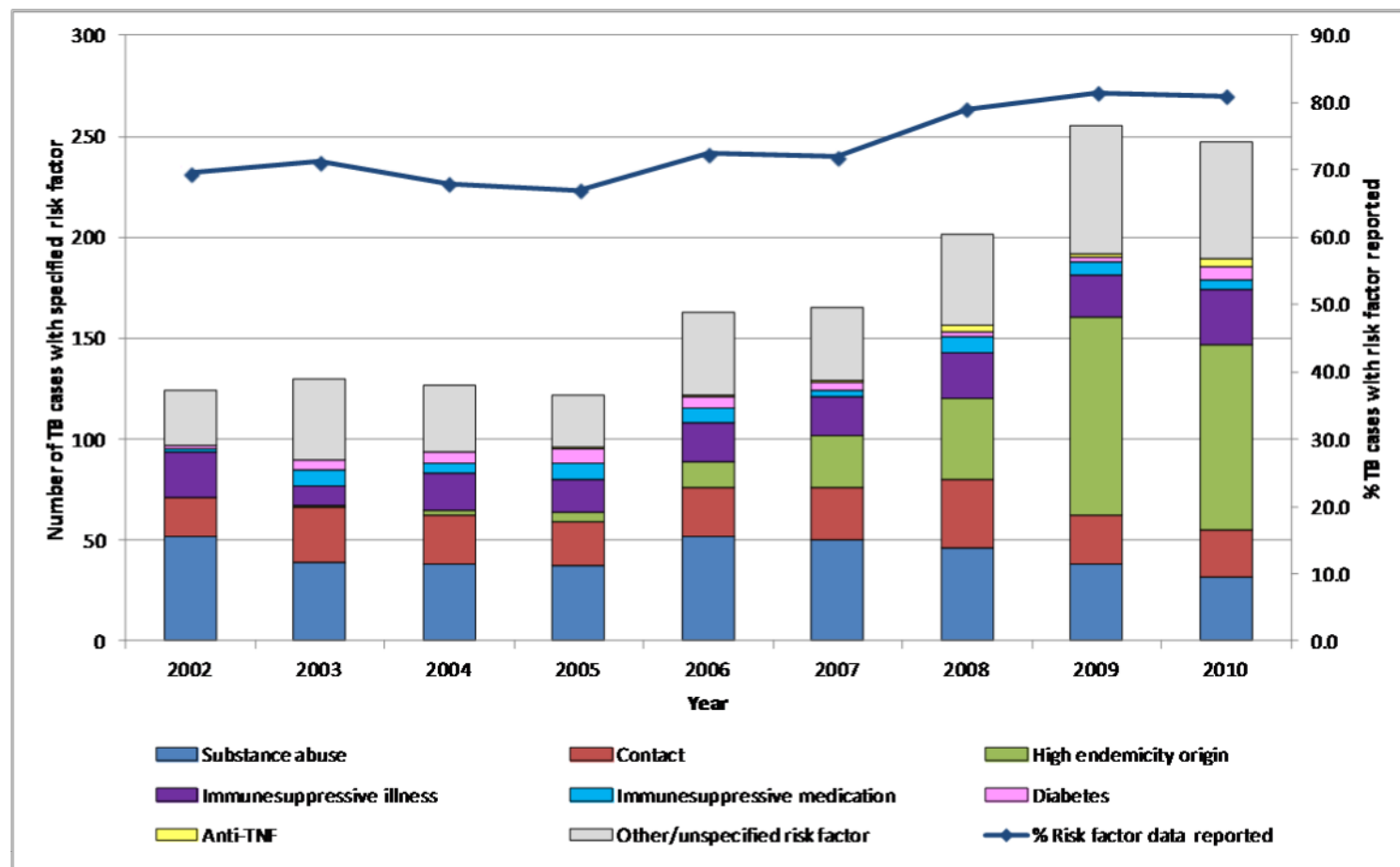


TB cases by percentage treatment success and year, 2002 - 2010



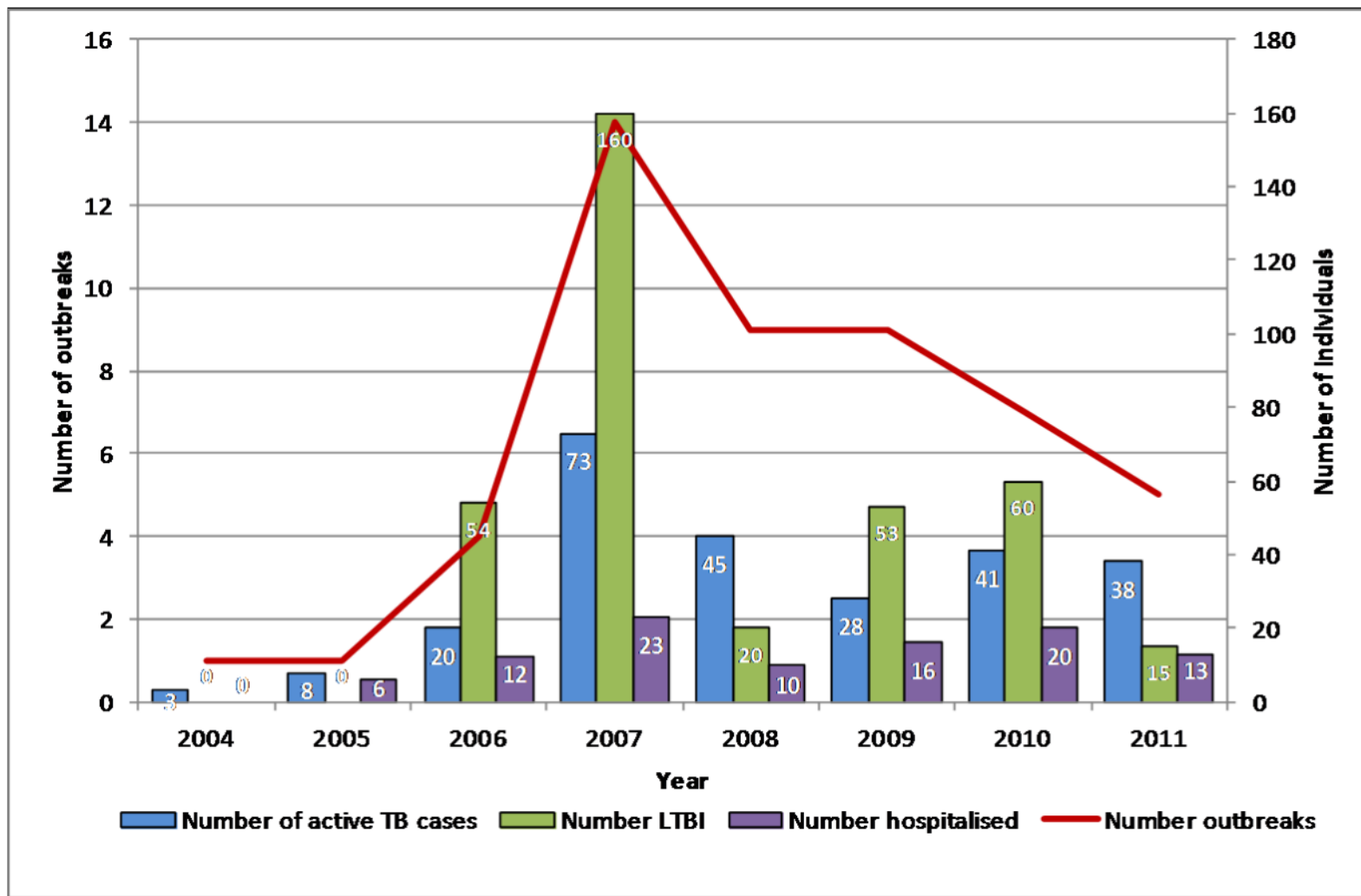


Number of TB cases with a TB risk factor reported and percentage with risk factor data reported by year, 2002 - 2010





TB outbreaks summary by year, 2004 – 2011





Data completeness of key variables, 2010

Variable	% Complete
Age	100.0
Sex	100.0
Diagnostic type	100.0
Country of birth (all notifications)	99.3
Country of birth (for foreign-born cases)	99.3
Sputum smear result (pulmonary cases)	91.9
Culture result	97.6
Isolate (Culture positive cases)	99.8
Isoniazid sensitivity result (Culture positive cases)	99.0
Rifampicin sensitivity result (Culture positive cases)	99.0
Case finding method	95.0
Treatment outcome	88.1
Previous history of TB (all cases)	85.7
Previous year of TB diagnosis (previously diagnosed cases)	78.8
Previous TB treatment history (previously diagnosed cases)	72.7
Previous TB treatment outcome (previously treated cases)	55.6
Risk group	81.0
HIV status	23.3



Provisional Epidemiology of TB in Ireland, 2011*

Parameter	2011 (% of total)
Total number of cases	424
Crude notification rate per 100,000	9.2
Cases in indigenous population [*]	188 (44.3%)
Cases in foreign-born persons	180 (42.5%)
Culture positive cases	287 (67.7%)
Pulmonary cases [†]	292 (68.9%)
Of which sputum smear positive	122 (41.8%)
Resistant cases	24 (5.7%)
Multidrug-resistant cases	3 (0.7%)
TB meningitis cases	3 (0.7%)

^{*} Country of birth unknown for 56 cases (13.2%)

[†] Includes the cases categorised as pulmonary +extrapulmonary (P+E)



**For further information on the epidemiology of tuberculosis in Ireland,
please see our website:**

**[http://www.ndsc.ie/hpsc/A-
Z/VaccinePreventable/TuberculosisTB/Epidemiology/SurveillanceReports/](http://www.ndsc.ie/hpsc/A-Z/VaccinePreventable/TuberculosisTB/Epidemiology/SurveillanceReports/)**