



Feidhmeannacht na Seirbhíse Sláinte
Health Service Executive



Health Protection Surveillance Centre
Lárionad Faire um Chosaint Sláinte



Epidemiology of Tuberculosis in Ireland, 2008



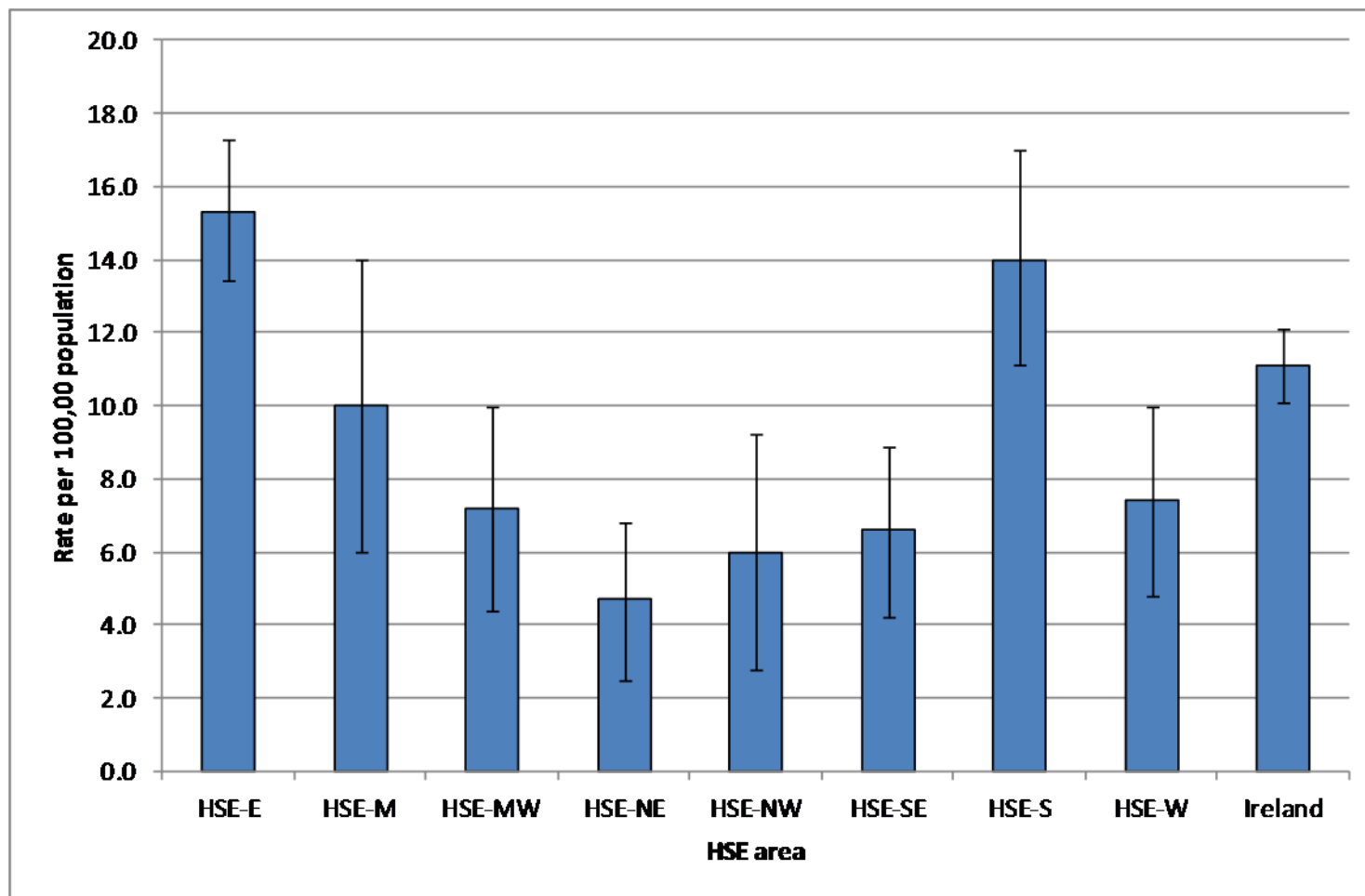
Summary of the epidemiology of TB in Ireland, 2008

Parameter	Number (% of total)
Total number of cases	468
Crude notification rate per 100,000	11.0
Cases in indigenous population*	263 (56.2%)
Rate in indigenous population per 100,000	7.4
Cases in foreign-born persons	204 (43.6%)
Rate in foreign-born persons per 100,000	33.3
Culture positive cases	312 (66.7%)
Pulmonary cases	336 (71.8%)
Of which sputum smear positive	158 (47.0%)
Resistant cases	27 (5.8%)
Multi-drug resistant cases	2 (0.4%)
Deaths attributable to TB	9 (1.9%)
Outcomes reported in all cases	414 (88.5%)
Outcomes reported in sputum smear positive cases	144 (91.0%)
TB meningitis cases	6 (1.3%)

* Country of birth unavailable for 1 case

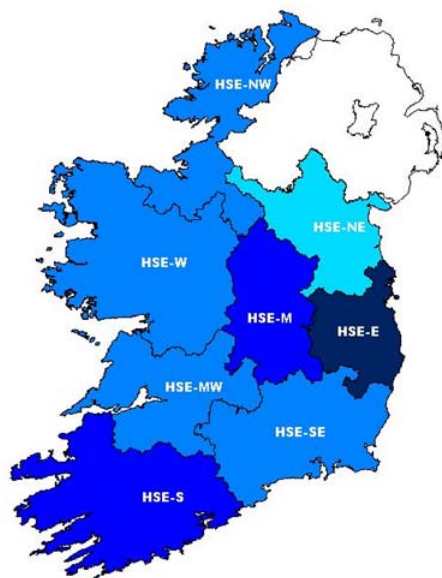


Number of TB cases & age-standardised TB incidence rates by HSE area with 95% confidence intervals, 2008

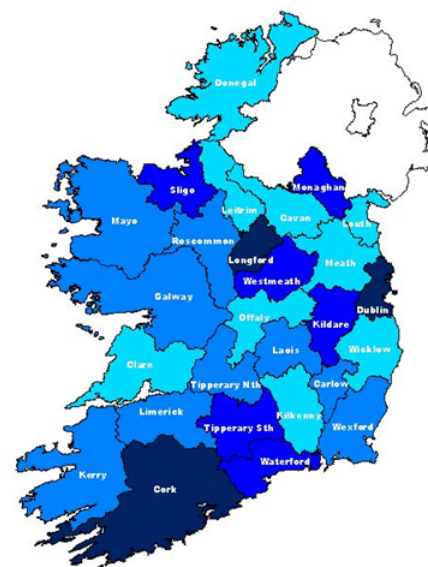




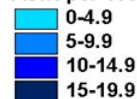
Age-standardised TB incidence rates by HSE area and county, 2008



ASIR per 100,000 population

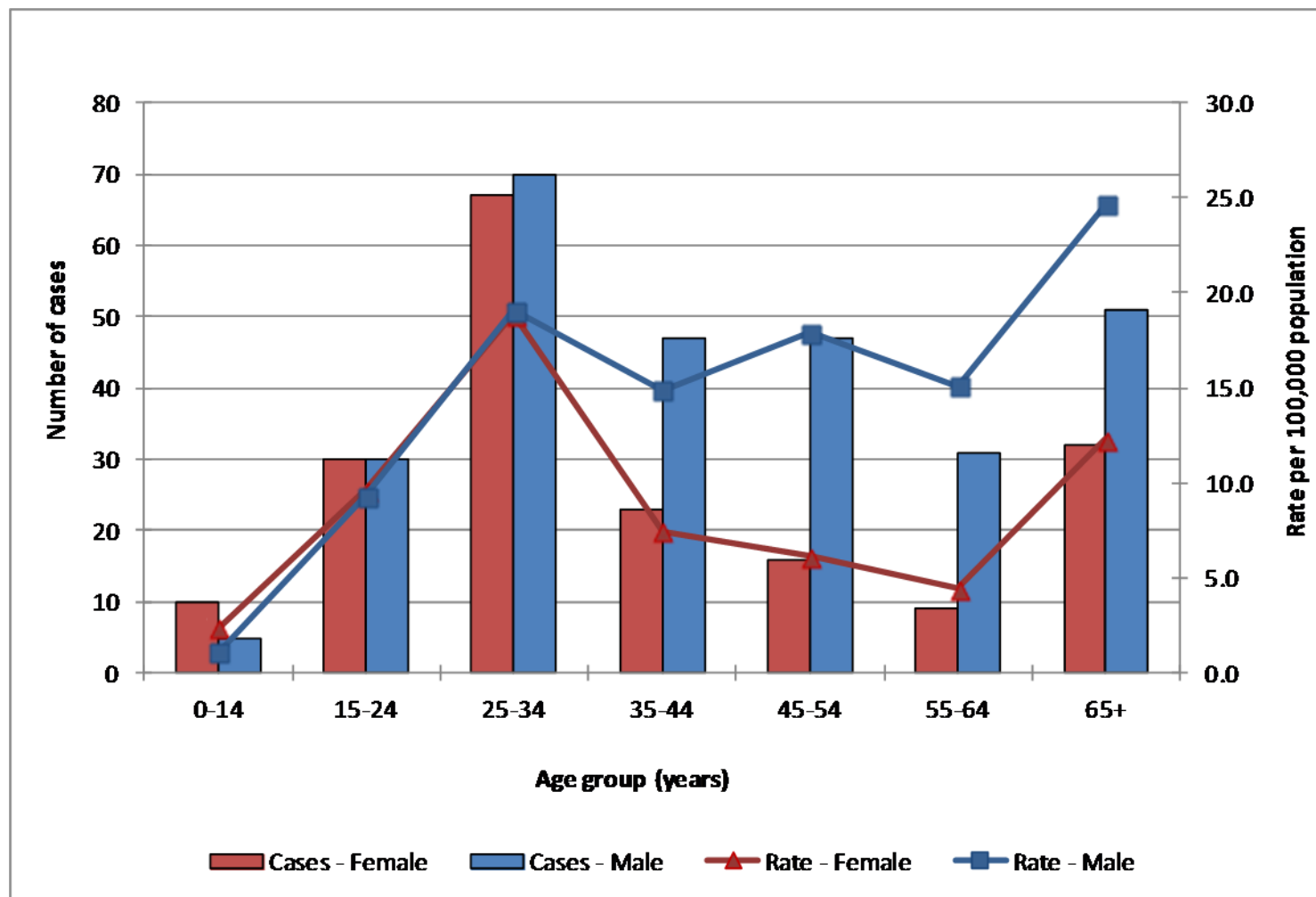


ASIR per 100,000 population



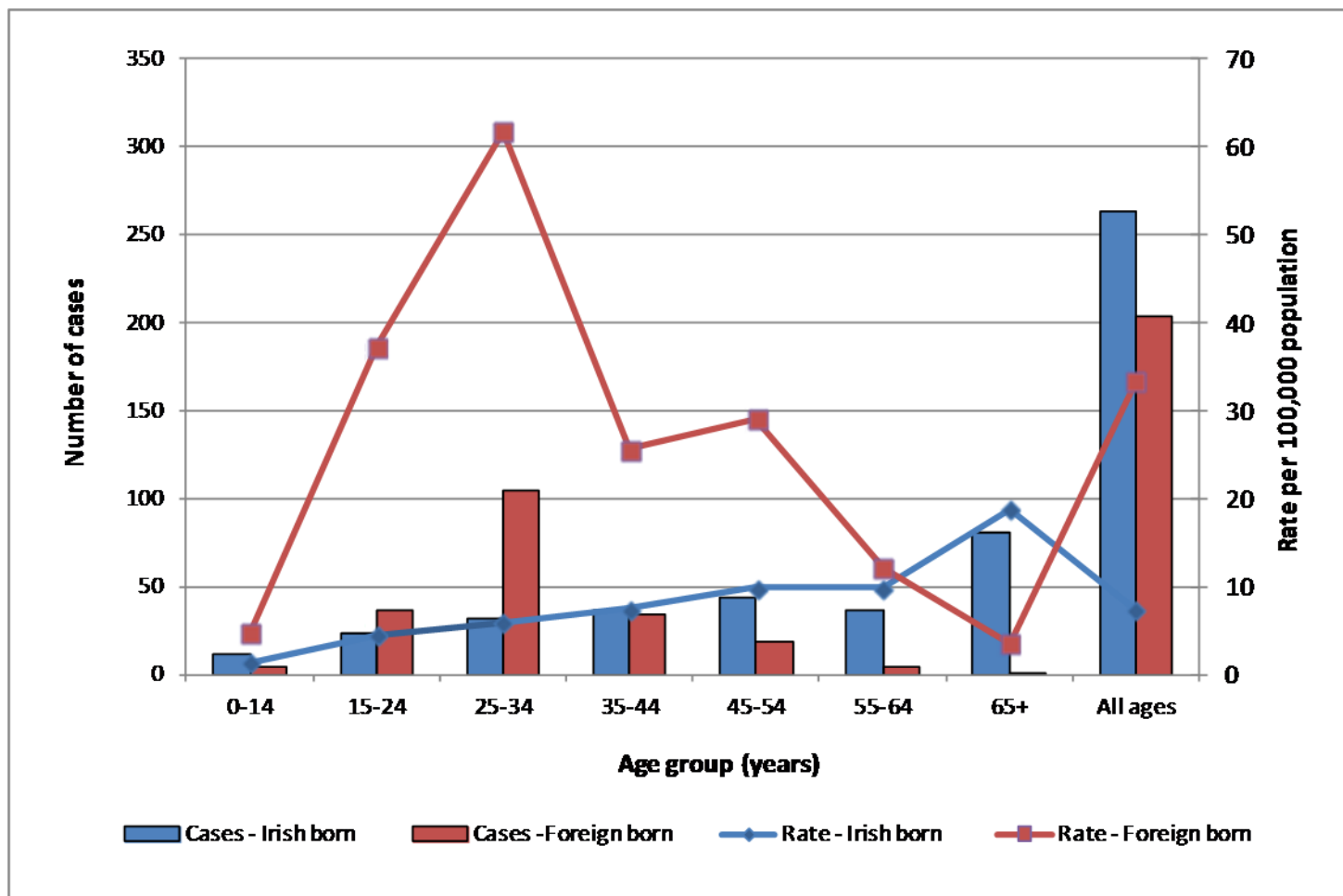


TB cases by age & sex, and age-specific rates, 2008





TB cases by age group and age specific rates by geographic origin, 2008





TB cases and rate per 100,000 population by geographic origin & HSE area, 2008

HSE Area	Irish-born			Foreign-born			Unknown	Total
	Cases	%	Rate	Cases	%	Rate		
HSE-E	121	51.1	9.8	116	48.9	48.1	0	237
HSE-M	7	29.2	3.2	17	70.8	56.0	0	24
HSE-MW	14	53.8	4.5	12	46.2	26.9	0	26
HSE-NE	10	55.6	3.0	8	44.4	13.8	0	18
HSE-NW	10	71.4	5.2	4	28.6	9.8	0	14
HSE-S	64	73.6	12.1	23	26.4	28.4	1	88
HSE-SE	18	60.0	4.5	12	40.0	22.6	0	30
HSE-W	19	61.3	5.5	12	38.7	18.9	0	31
Ireland	263	56.3	7.4	204	43.7	33.3	1	468



TB cases by HSE area and site of disease, 2008

HSE area	Pulmonary only		Extrapulmonary only		Pulmonary + Extrapulmonary	
	Cases	% of total	Cases	% of total	Cases	% of total
HSE-E	159	67.1	59	24.9	19	8.0
HSE-M	16	66.7	5	20.8	3	12.5
HSE-MW	15	57.7	10	38.5	1	3.8
HSE-NE*	12	70.6	5	29.4	0	0.0
HSE-NW	9	64.3	4	28.6	1	7.1
HSE-S	51	58.0	28	31.8	9	10.2
HSE-SE	18	60.0	7	23.3	5	16.7
HSE-W	16	51.6	13	41.9	2	6.5
Total	296	63.2	131	28.0	40	8.5

* Site of disease unknown in one case



Summary of Anti-TB drug resistance, 2008

DST results	Number of cases	% of total cases
Cases with DST results	296	63.2
Resistant cases	27	5.8
MDR-TB	2	0.4
Cases resistant to isoniazid and streptomycin	2	0.4
Cases resistant to isoniazid and other (unknown)	1	0.2
Mono-resistance to Isoniazid	13	2.8
Mono-resistance to Rifampicin	1	0.2
Mono-resistance to Pyrazinamide [*]	2	0.4
Mono-resistance to Ethambutol	1	0.2
Mono-resistance to Streptomycin	5	1.1

^{*} Excludes the *M. bovis* cases which are innately resistant to pyrazinamide

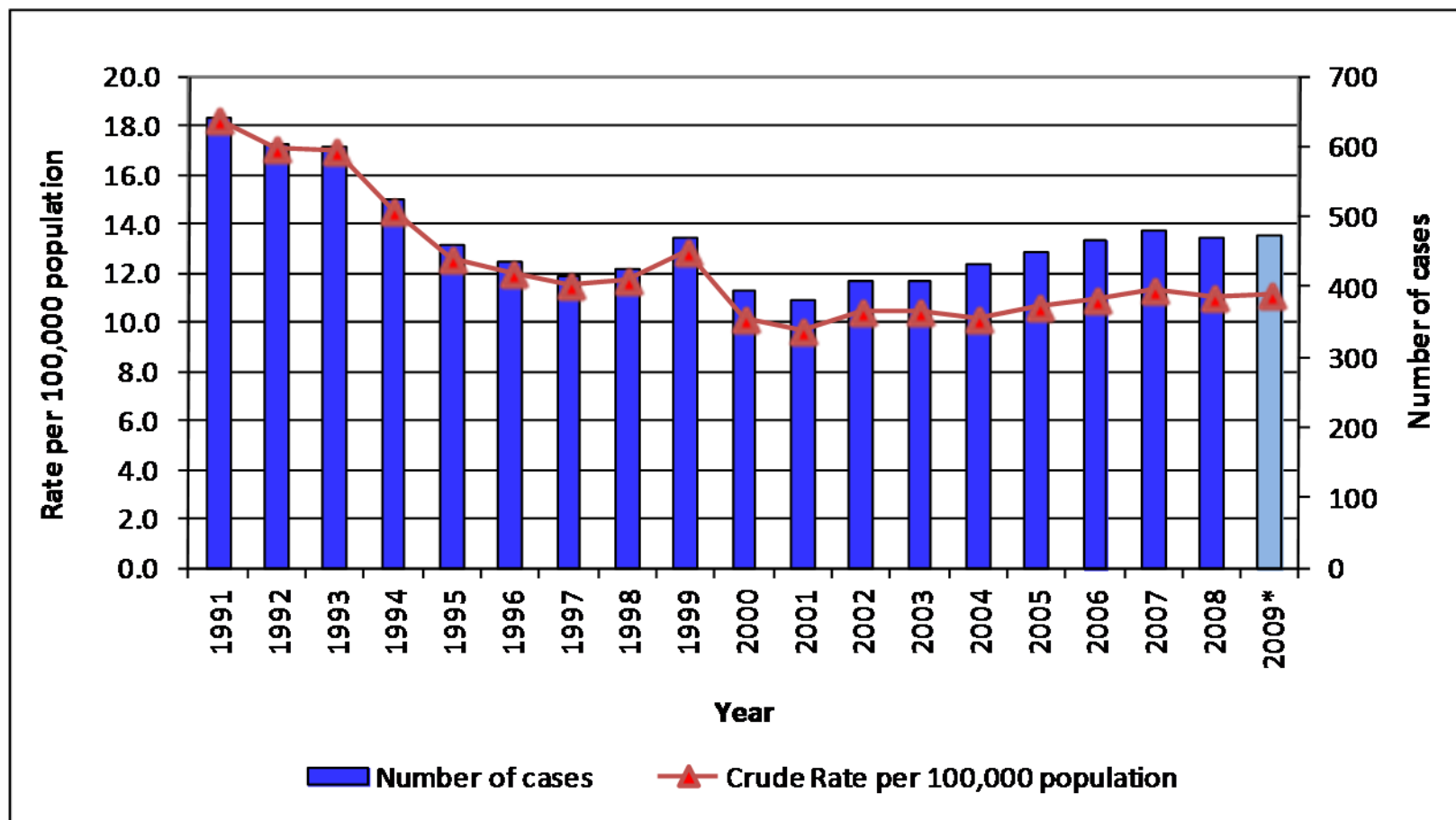


Treatment outcome for TB cases, 2008

Treatment outcome	Total		Smear Positive	
	Number	%	Number	%
Completed	338	72.2	120	75.9
Lost to follow up	30	6.4	11	7.0
Died (not attributed to TB)	25	5.3	6	3.8
Died (attributed to TB)	9	1.9	3	1.9
Died (cause unknown)	2	0.4	2	1.3
Interrupted (>2mths)	9	1.9	2	1.3
Still on treatment	1	0.2	0	0.0
Unknown	54	11.5	14	8.9
Total	468	100	158	100



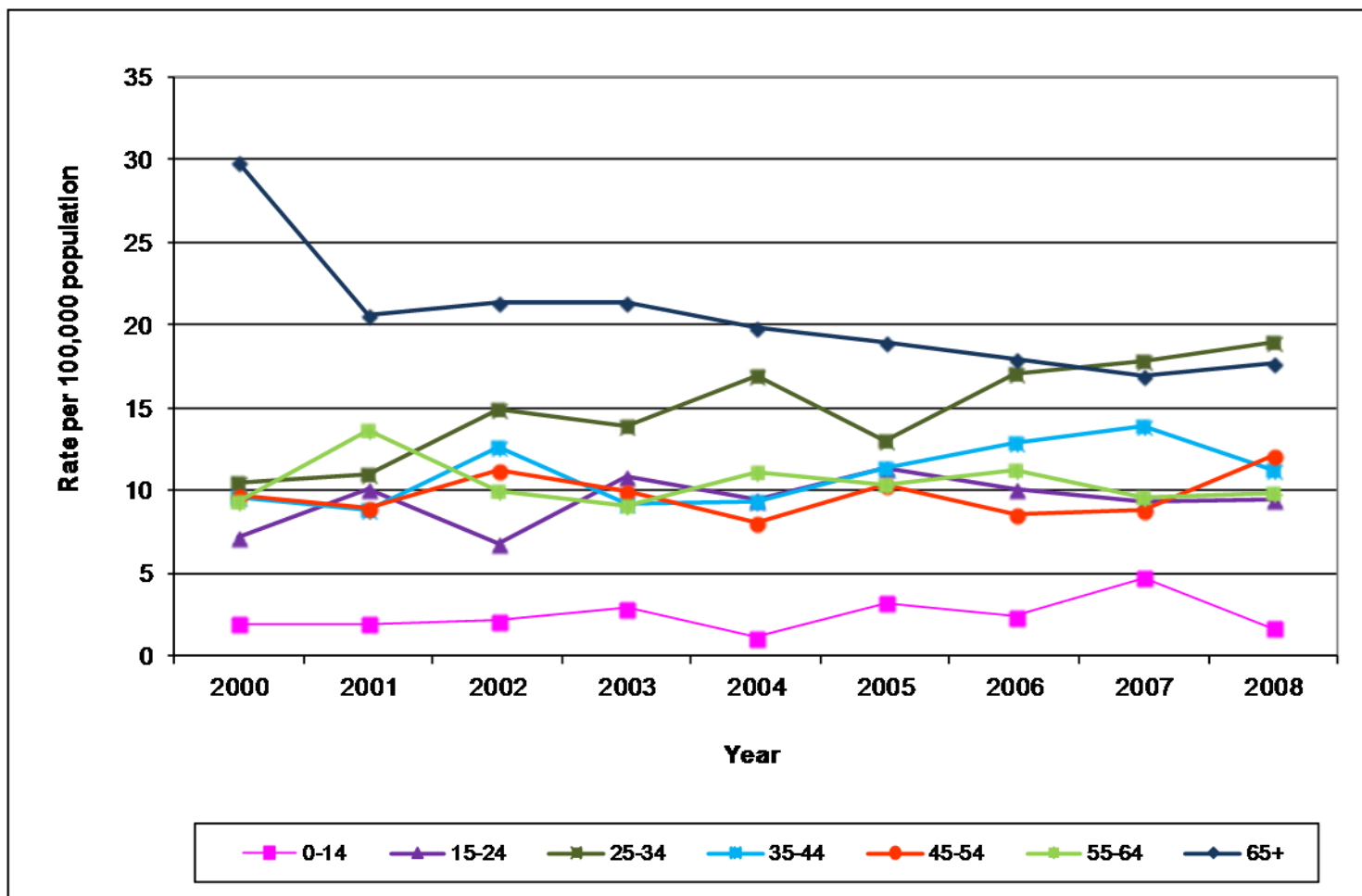
Number of TB cases and crude rate per 100,000: 1991 to 2009*



*2009 data are provisional data only

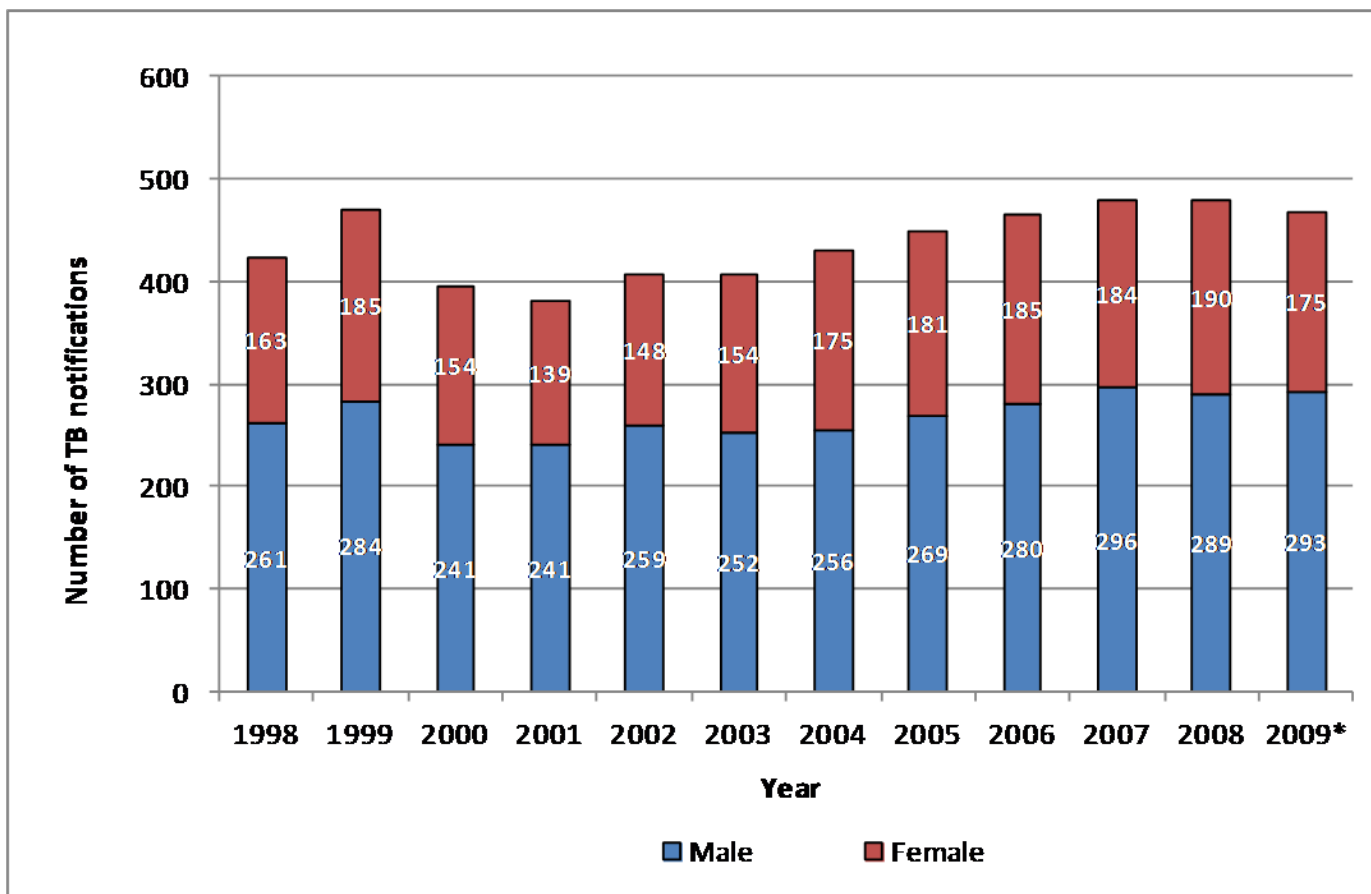


Age-specific rates of TB by year, 2000 - 2008





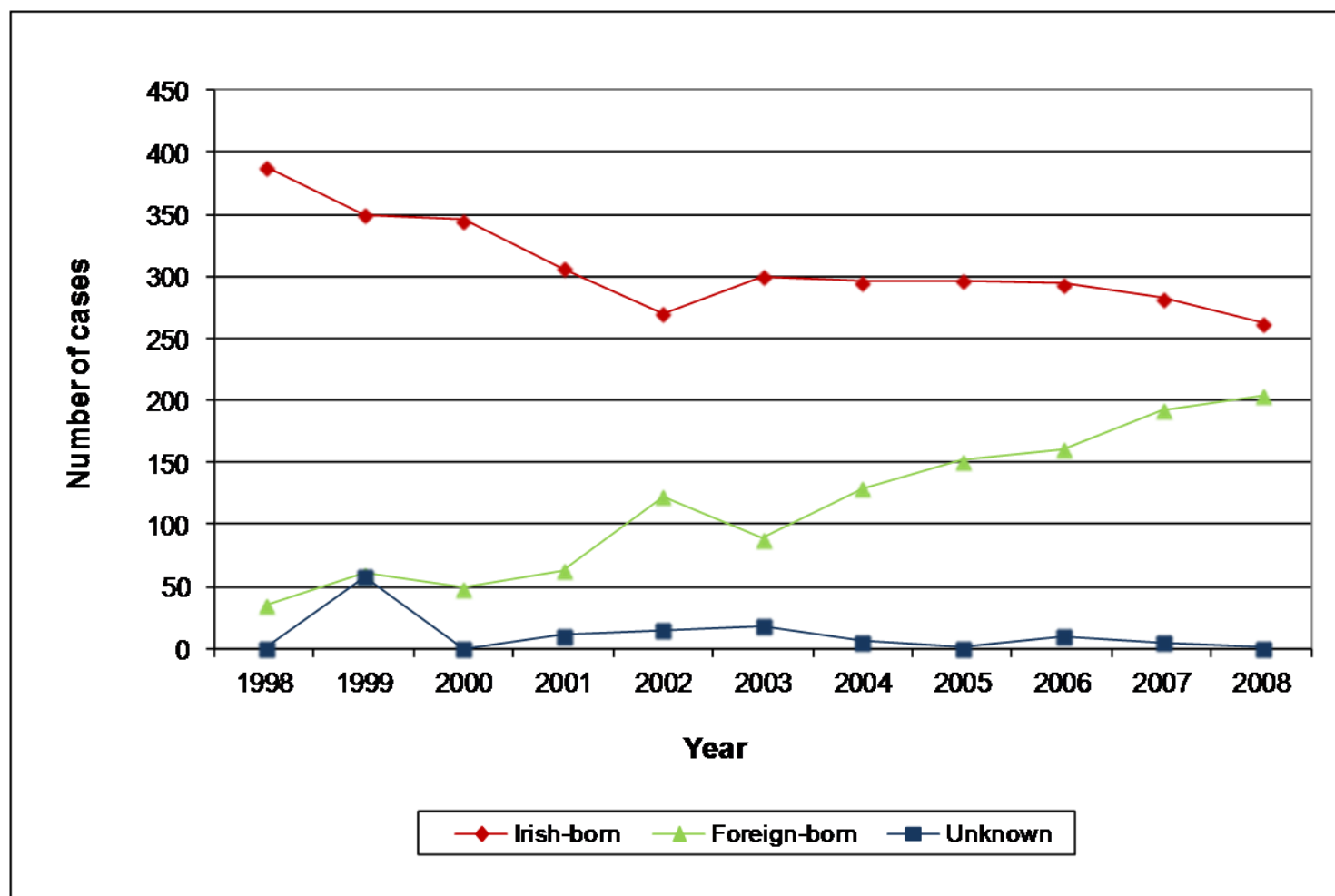
TB cases by sex and year, 2000 – 2009*



*2009 data are provisional data only



TB cases by geographic origin and year, 1998 - 2008





Provisional Epidemiology of TB in Ireland, 2009

Parameter	2009
Total number of cases	472
Crude notification rate per 100,000	11.1
Cases in indigenous population [*]	267 (56.6%)
Cases in foreign-born persons	191 (40.5%)
Culture positive cases	242 (51.3%)
Pulmonary cases [†]	311 (65.9%)
Of which sputum smear positive	136 (43.7%)
Resistant cases	12 (2.5%)
Multi-drug resistant cases	0 (0.0%)
TB meningitis cases	7 (1.5%)

^{*} Country of birth unknown for 14 cases

[†] Includes the cases categorised as pulmonary +extrapulmonary (P+E)



**For further information on the epidemiology of tuberculosis in Ireland,
please see our website:**

**[http://www.hpsc.ie/TuberculosisTB/AnnualReportsOnTheEpidemiologyof
TBInIreland/](http://www.hpsc.ie/TuberculosisTB/AnnualReportsOnTheEpidemiologyOfTBInIreland/)**