



Trends in STIs in MSM in Ireland

Gillian Cullen
Health Protection Surveillance Centre

Gay Health Forum 13
5th June, 2015



Trends in

- Gonorrhoea
- HIV
- LGV
- Syphilis

... among MSM in the context of trends internationally.



London, September, 2014

In 2013...

- 84% of syphilis cases & 65% gonorrhoea cases in London were diagnosed in MSM
- Over 50% of new HIV diagnoses in London were among MSM
- LGV occurred almost exclusively in MSM



United States, December, 2014

In 2013...

- MSM accounted for 75% of all primary & secondary syphilis cases
- 51.6% of primary & secondary syphilis cases were co-infected with HIV (case-based reports)
- for the first time since 2000 the rate of reported gonorrhoea cases among men was higher than the rate among women



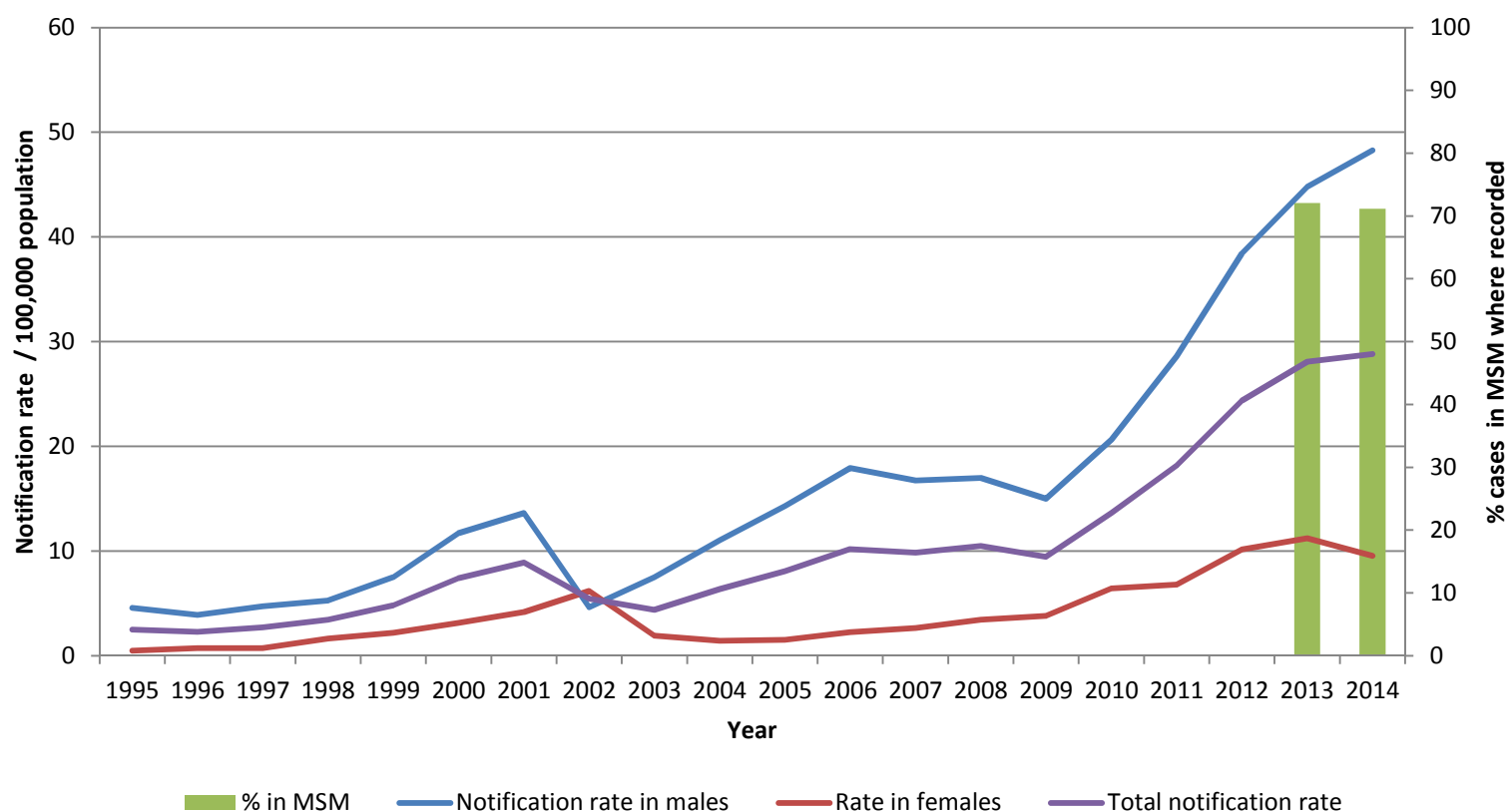
In Ireland, mode of transmission is collected for the following diseases:

- Gonorrhoea
- HIV
- LGV
- Syphilis

Note: Data for 2014 are provisional



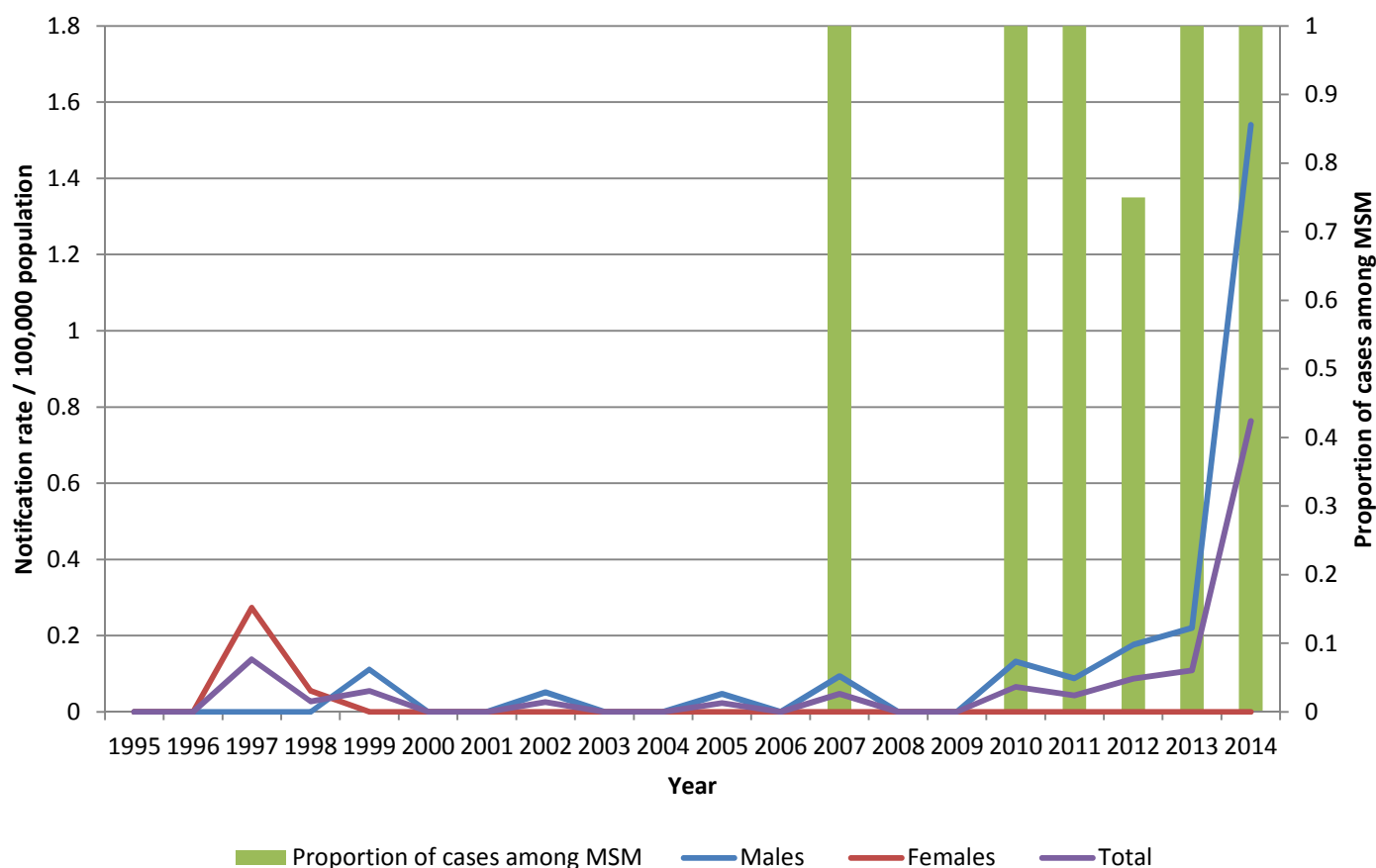
Notification rate of gonorrhoea cases by gender & percentage of cases among MSM, 1995-2014



Sources: National aggregate STI database 1995-2012 and CIDR 2013-2014, HPSC



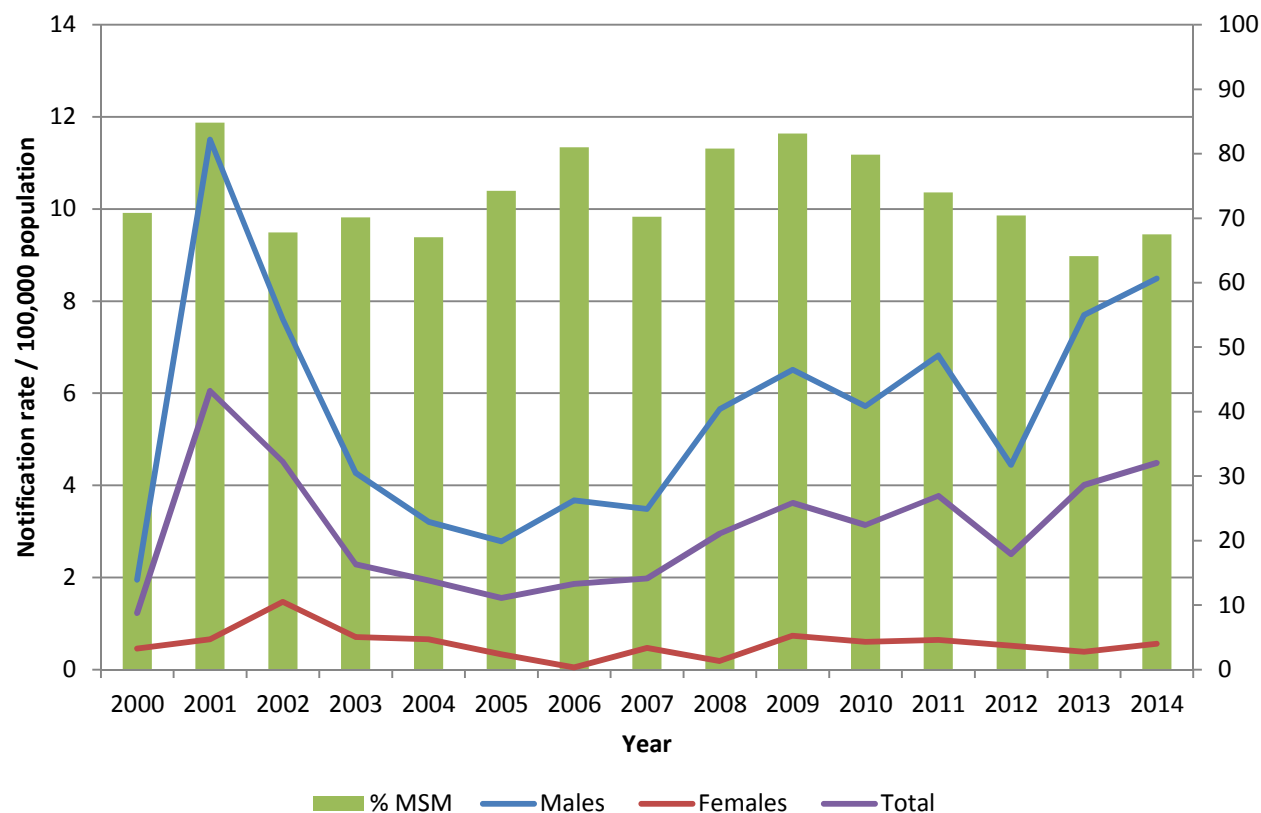
Notification rate of LGV cases by gender & proportion of cases among MSM, 1995-2014



Sources: National aggregate STI database 1995-2012 and CIDR 2013-2014, HPSC



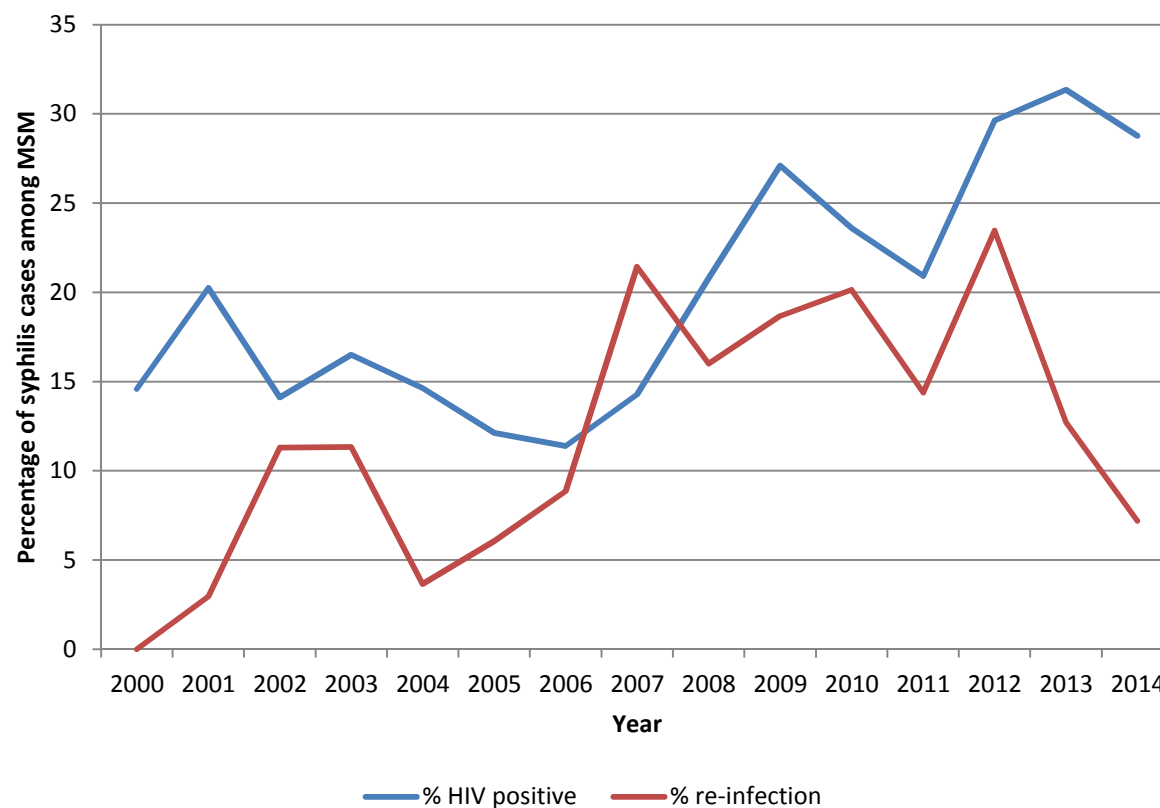
Notification rate of early syphilis cases by gender & percentage of cases among MSM, 1995-2014



Sources: National syphilis database 2000-2011 and CIDR 2012-2014, HPSC



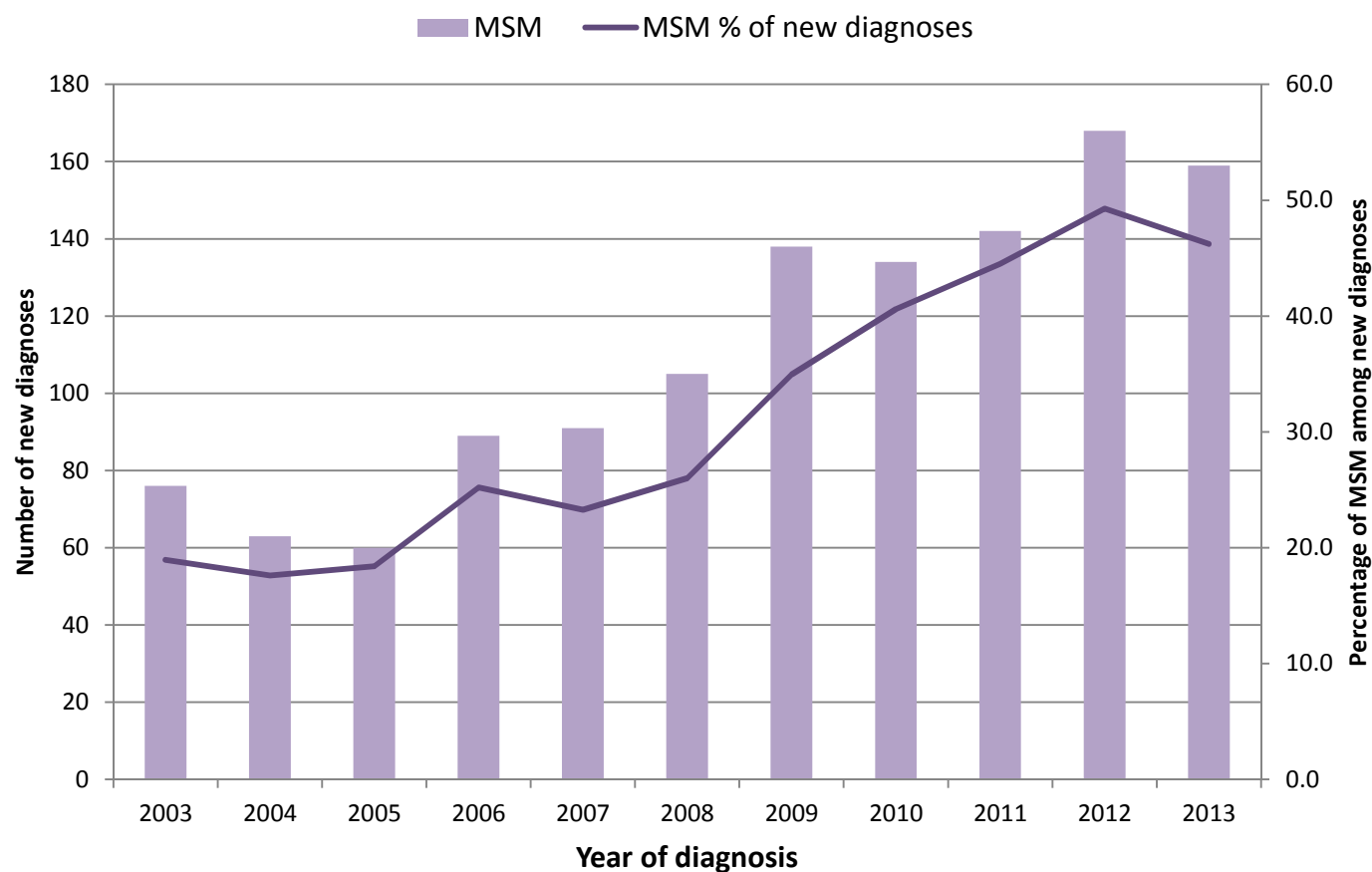
Percentage of syphilis cases that are HIV positive & syphilis re-infections among MSM, 2000-2014



Sources: National syphilis database 2000-2011 and CIDR 2012-2014, HPSC



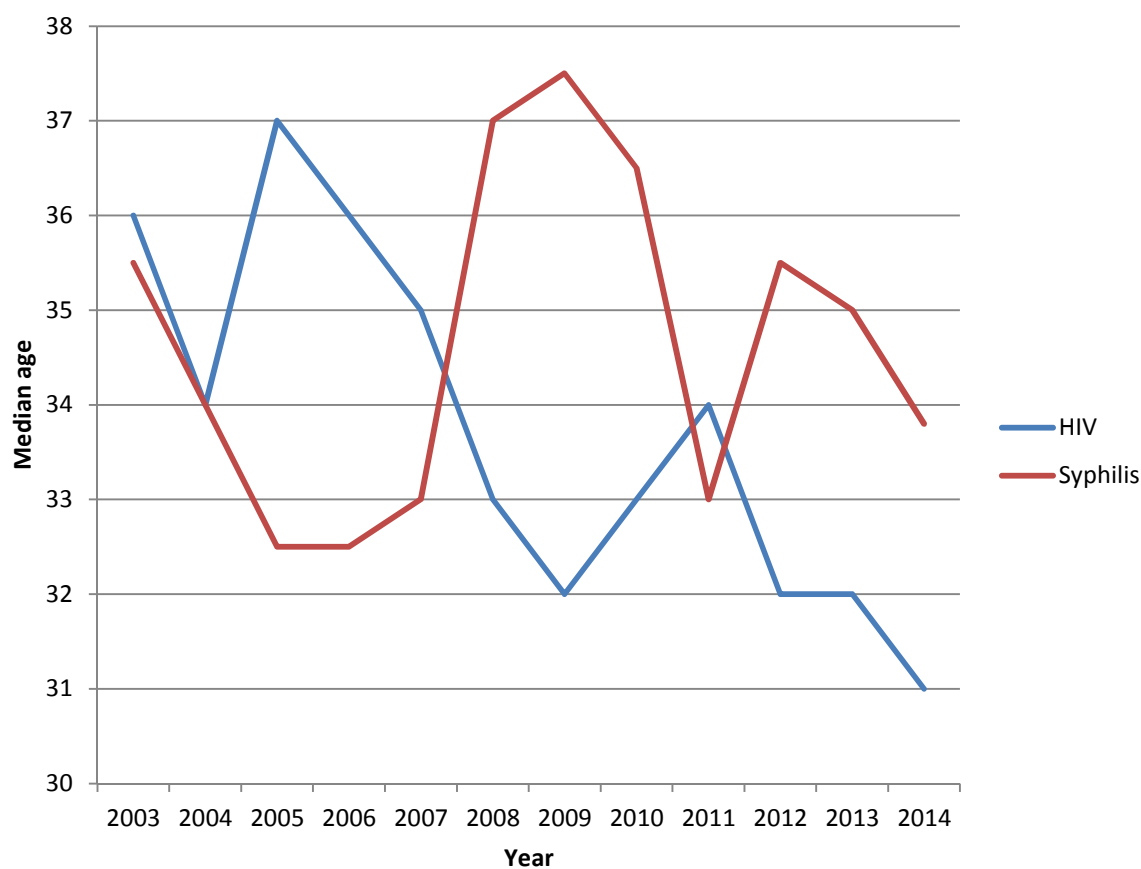
Trend in new HIV diagnoses among MSM



Sources: National HIV database 2003-2011 and CIDR 2012-2013, HPSC



Trend in median age at diagnosis for HIV & Syphilis, 2003-2014





Ireland, May 2015

- More than 70% of gonorrhoea cases in 2013 & 2014 were in MSM (based on limited data)
- 49% of new HIV diagnoses in 2014 were in MSM
- LGV occurs almost exclusively in MSM
- 64% of early syphilis cases were in MSM in 2014

... so pattern in Ireland is not that different



As in London there are high rates of STIs among MSM.
So some of the same interventions and
recommendations should be considered in Ireland.



Public Health Messages 1

- Encourage regular HIV & STI screening & treatment
- Expand & normalise HIV testing to ensure earlier diagnosis and access to treatment
- Routine collection of mode of transmission to improve understanding of the health of MSM



Public Health Messages 2

- Avail of all health promotion opportunities to educate and raise awareness among MSM of need for regular HIV & STI screening and to adopt safe sex practices
- Good access to condoms
- Provision of personal, social and health education to all children that addresses self-esteem and builds confident adults who take fewer risks



Acknowledgements

The Health Protection Surveillance Centre (HPSC) would like to thank all those who provided the data for this report, particularly the STI clinics, the infectious disease surveillance staff within the departments of public health, the laboratories and GP clinics.

Dr. Kate O'Donnell, HPSC, for providing HIV data for this presentation.

STI data were extracted from CIDR on 28th May, 2015,
and were correct at the time of publication.