

Influenza Surveillance in Ireland – Weekly Report

Influenza Week 41 2015 (5th – 11th October 2015)



Summary

All indicators of influenza activity in Ireland were at low levels during week 41 2015 (week ending 11th October 2015).

- **Influenza-like illness (ILI):** The sentinel GP influenza-like illness (ILI) consultation rate was 4.3 per 100,000 population in week 41 2015, remaining low, and stable compared to the rate of 4.2 per 100,000 reported during week 40 2015.
 - ILI rates remain below the Irish baseline ILI threshold (18 per 100,000 population)
 - ILI rates remain at low levels in all age groups
- **GP Out of Hours:** The proportion of influenza-related calls to GP Out-of-Hours services was at low levels during week 41 2015.
- **National Virus Reference Laboratory (NVRL):**
 - No influenza positive specimens were detected by the NVRL for week 41 2015.
 - Respiratory syncytial virus (RSV) positivity was at low levels during week 41 2015.
 - Sporadic detections of parainfluenza virus type 1 (PIV-1), PIV-3, adenovirus and human metapneumovirus (hMPV) were reported for the 2015/2016 season to date.
- **Respiratory admissions:** Respiratory admissions reported from a network of sentinel hospitals were at low levels.
- **Hospitalisations:** Two confirmed influenza hospitalised cases were notified to HPSC for the 2015/2016 season to date (up to week ending 11th October 2015): one associated with influenza A(H3) and one with influenza B.
- **Critical care admissions:** No confirmed influenza cases were admitted to critical care units and reported to HPSC for the 2015/2016 season to date.
- **Mortality:** There were no reports of any influenza-associated deaths for the 2015/2016 season to date.
- **Outbreaks:** No acute respiratory outbreaks were reported to HPSC for the 2015/2016 season to date.
- **International:** In the European Region, influenza activity continued at low, inter-seasonal levels with sporadic influenza detections.

1. GP sentinel surveillance system - Clinical Data

- During week 41 2015, 11 influenza-like illness (ILI) cases were reported from sentinel GPs, corresponding to an ILI consultation rate of 4.3 per 100,000 population, remaining low, and stable compared to the updated rate of 4.2 per 100,000 reported during week 40 2015. The ILI rate for week 41 2015 is below the Irish baseline ILI threshold (figure 1).
- HPSC in consultation with the European Centre for Disease Prevention and Control (ECDC) have revised the Irish baseline ILI threshold for the 2015/2016 influenza season to 18 per 100,000 population; this threshold indicates the likelihood of influenza community circulation. The Moving Epidemic Method (MEM) has been adopted by ECDC to calculate thresholds for GP ILI consultations for the start of influenza activity in a standardised approach across Europe.¹
- The baseline ILI threshold, medium (57/100,000 population) and high (114/100,000 population) intensity ILI thresholds are shown in figure 1.
- ILI age specific rates were low in all age groups during week 41 2015 (figure 2).

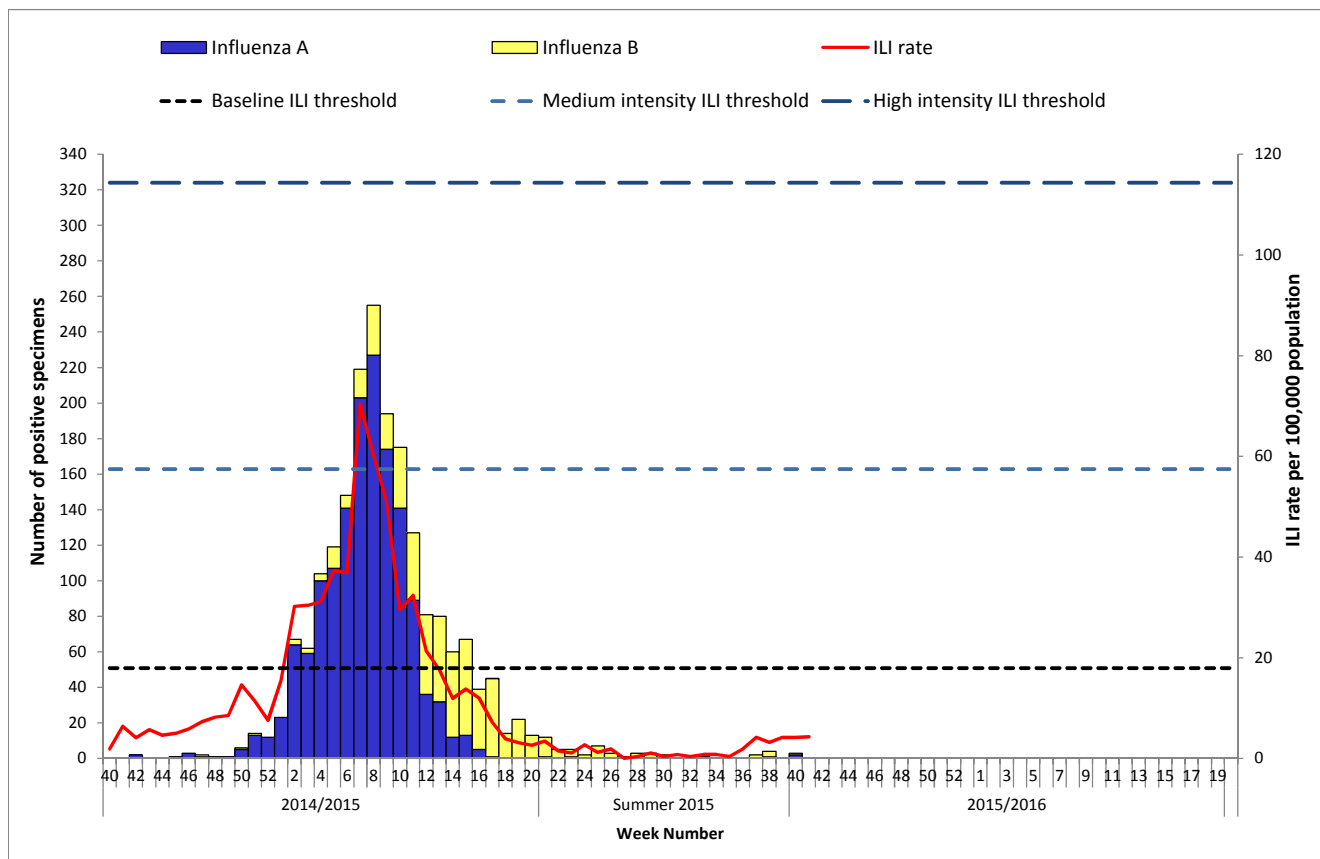


Figure 1. ILI sentinel GP consultation rates per 100,000 population, baseline ILI threshold, medium and high intensity ILI thresholds and number of positive influenza A and B specimens tested by the NVRL, by influenza week and season.

Source: ICGP and NVRL

¹ For further information on the Moving Epidemic Method (MEM) to calculate ILI thresholds:

<http://www.ncbi.nlm.nih.gov/pubmed/22897919>

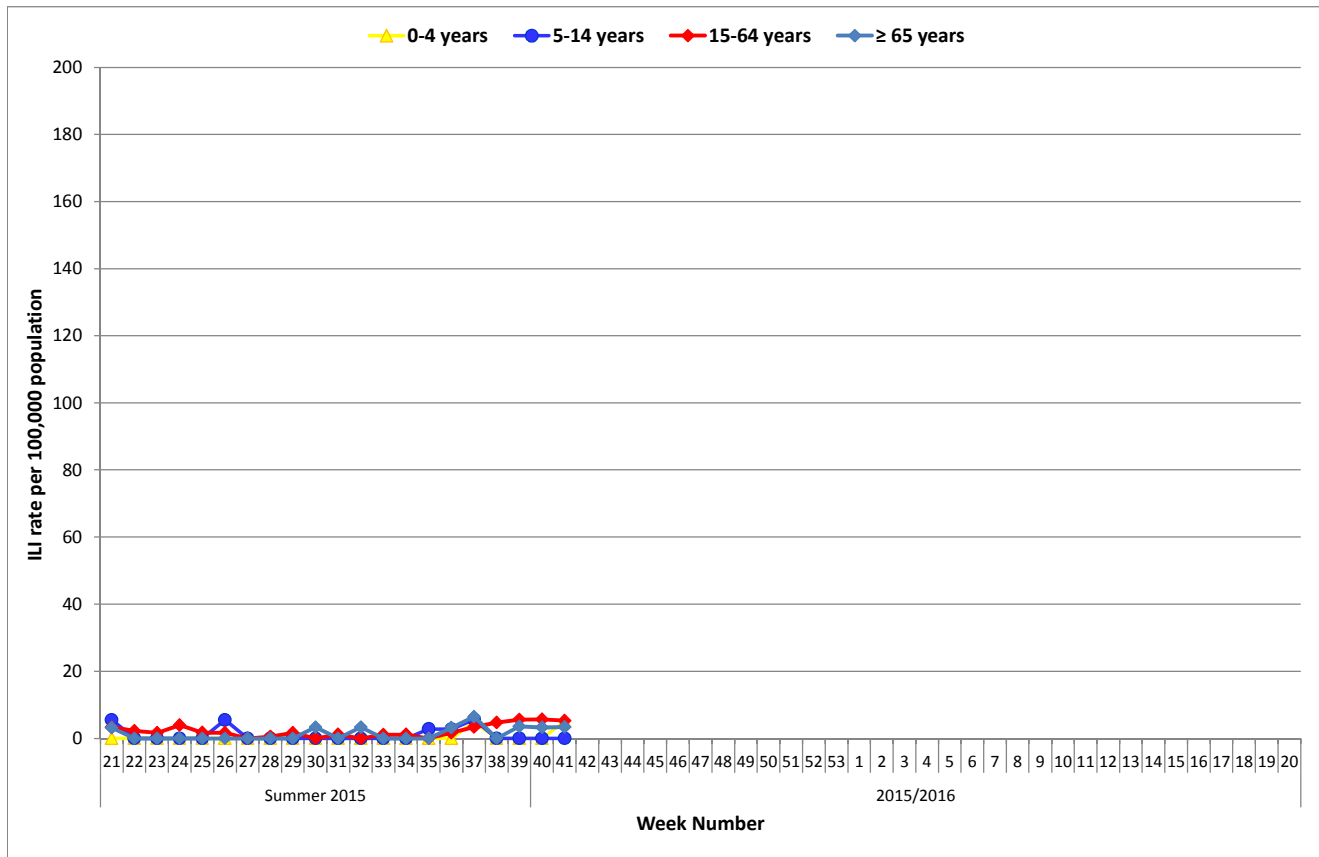


Figure 2: Age specific sentinel GP ILI consultation rate per 100,000 population by week during the summer of 2015 and the 2015/2016 influenza season to date. Source: ICGP.

2. Influenza and Other Respiratory Virus Detections - NVRL

The data reported in this section for the 2015/2016 influenza season refers to sentinel and non-sentinel respiratory specimens routinely tested for influenza, respiratory syncytial virus (RSV), adenovirus, parainfluenza viruses types 1, 2, 3 & 4 (PIV-1, -2, -3 & -4) and human metapneumovirus (hMPV) by the National Virus Reference Laboratory (NVRL) (figure 3, tables 1 & 2).

- No influenza positive specimens were detected by the NVRL during week 41 2015.
- Three (3/159; 1.9%) respiratory syncytial virus (RSV) positive non-sentinel specimens were reported during week 41 2015. Figure 3 shows the number and percentage of non-sentinel RSV positive specimens detected by the NVRL during the 2015/2016 season, compared to the 2014/2015 season.
- Five parainfluenza virus type -1, one parainfluenza virus type-3, one adenovirus and one human metapneumovirus (hMPV) positive specimens were reported by the NVRL during week 41 2015.
- During the 2015 summer period, sporadic detections of influenza, RSV, adenovirus, parainfluenza viruses and hMPV were reported from the NVRL.

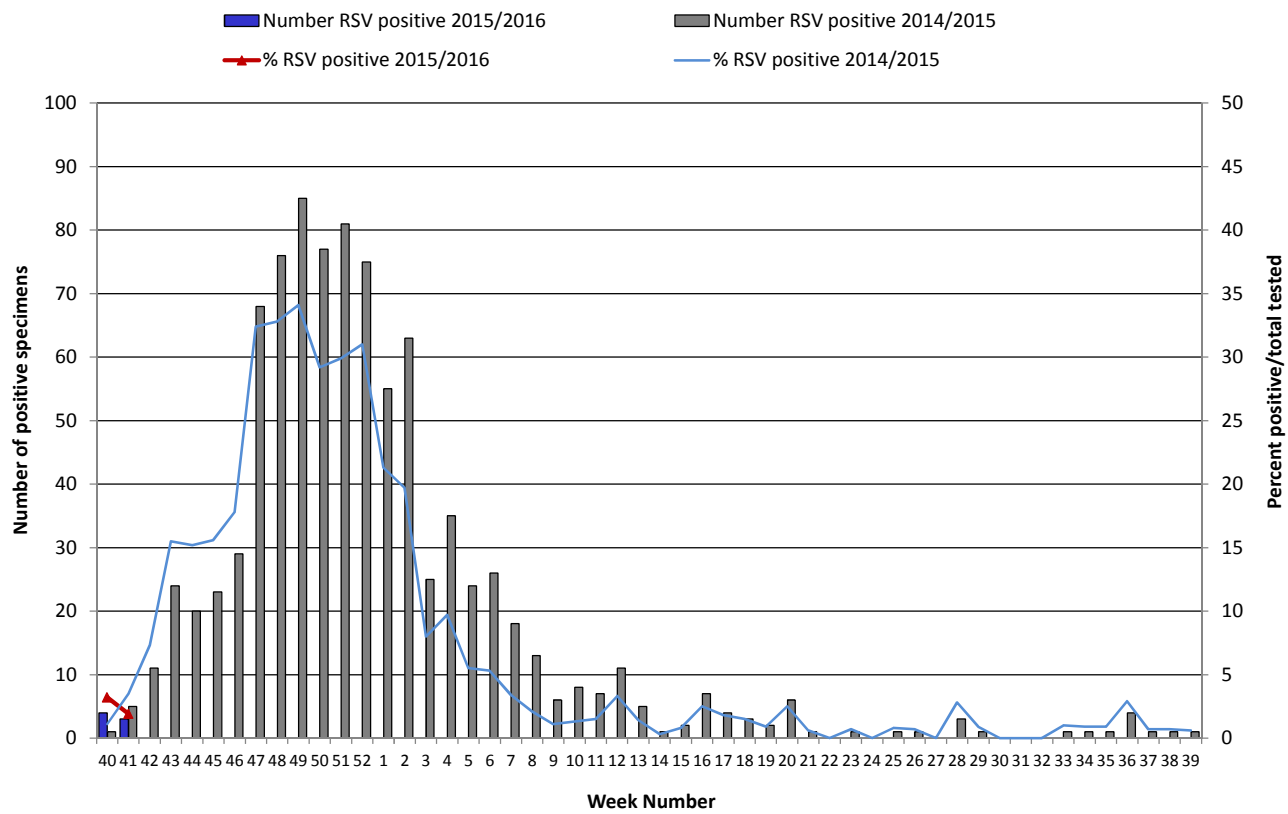


Figure 3: Number and percentage of non-sentinel RSV positive specimens detected by the NVRL by week during the 2015/2016 season, compared to the 2014/2015 season. Source: NVRL.

Table 1: Number of sentinel and non-sentinel[†] respiratory specimens tested by the NVRL and positive influenza results, for week 41 2015 and the 2015/2016 season to date. Source: NVRL

Week	Specimen type	Total tested	Number influenza positive	% Influenza positive	Influenza A				Influenza B
					A (H1)pdm09	A (H3)	A (not subtyped)	Total influenza A	
41 2015	Sentinel	8	0	0.0	0	0	0	0	0
	Non-sentinel	159	0	0.0	0	0	0	0	0
	Total	167	0	0.0	0	0	0	0	0
2015/2016	Sentinel	13	1	7.7	1	0	0	1	0
	Non-sentinel	285	2	0.7	0	1	0	1	1
	Total	298	3	1.0	1	1	0	2	1

Table 2: Number of non-sentinel specimens tested by the NVRL for other respiratory viruses and positive results, for week 41 2015 and the 2015/2016 season to date. Source: NVRL

Week	Specimen type	Total tested	RSV	% RSV	Adenovirus	% Adenovirus	PIV-1	% PIV-1	PIV-2	% PIV-2	PIV-3	% PIV-3	PIV-4	% PIV-4	hMPV	% hMPV
41 2015	Sentinel	8	0	0.0	0	0.0	1	12.5	0	0.0	0	0.0	0	0.0	0	0.0
	Non-sentinel	159	3	1.9	1	0.6	4	2.5	0	0.0	1	0.6	0	0.0	1	0.6
	Total	167	3	1.8	1	0.6	5	3.0	0	0.0	1	0.6	0	0.0	1	0.6
2015/2016	Sentinel	13	0	0.0	0	0.0	1	7.7	0	0.0	0	0.0	0	0.0	0	0.0
	Non-sentinel	285	7	2.5	2	0.7	7	2.5	0	0.0	1	0.4	0	0.0	2	0.7
	Total	298	7	2.3	2	0.7	8	2.7	0	0.0	1	0.3	0	0.0	2	0.7

[†] Please note that non-sentinel specimens relate to specimens referred to the NVRL (other than sentinel specimens) and may include more than one specimen from each case.

3. Regional Influenza Activity by HSE-Area

Influenza activity is based on sentinel GP ILI consultation rates, laboratory data and outbreaks.

Sporadic influenza activity (based on ILI cases and/or confirmed influenza cases) was reported in HSE-E, -MW, and -NW and no influenza activity was reported in all other HSE-Areas during week 41 2015 (figure 4).

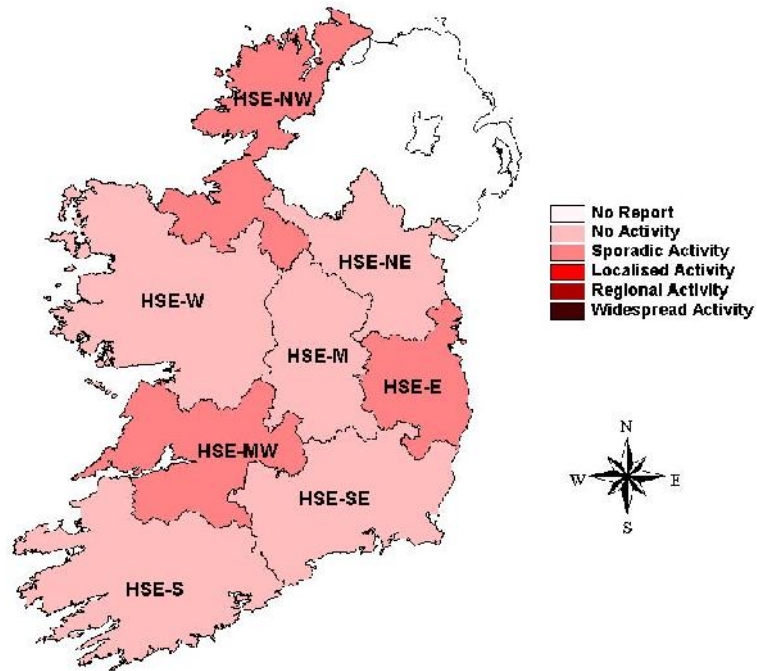


Figure 4: Map of provisional influenza activity by HSE-Area during influenza week 41 2015

Sentinel hospitals

The Departments of Public Health have established at least one sentinel hospital in each HSE-Area, to report data on total, emergency and respiratory admissions on a weekly basis.

Respiratory admissions reported from sentinel hospitals were at low levels during week 40 2015 at 199. Data reported for week 41 2015 (shown in figure 5) should be interpreted with caution as data were incomplete; with only 5 of 8 sentinel hospitals reporting at the time of publication of this report.

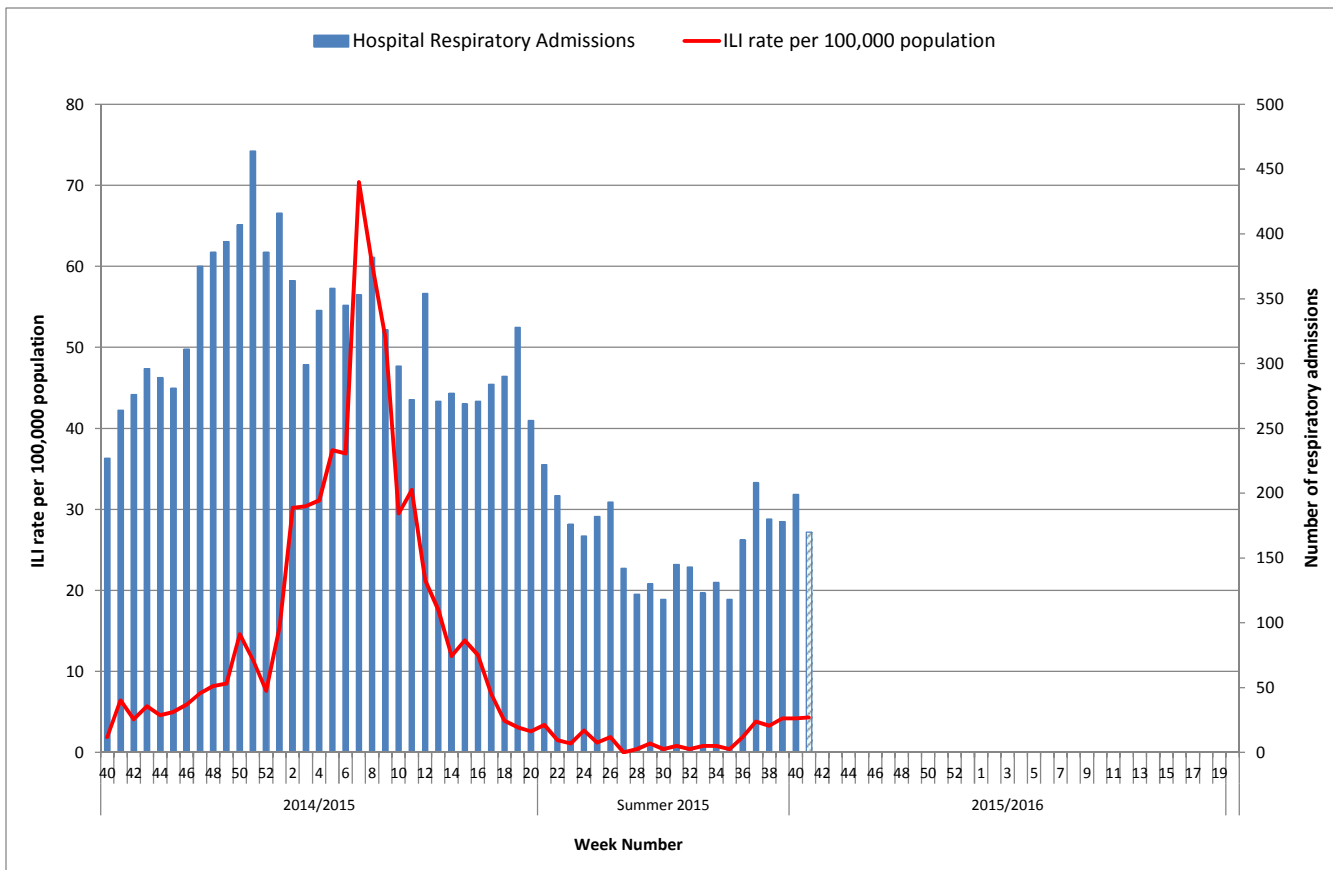


Figure 5: Number of respiratory admissions reported from sentinel hospitals and ILI sentinel GP consultation rate per 100,000 population by week and season. *Source: Departments of Public Health - Sentinel Hospitals & ICGP. It should be noted that data for week 41 2015 were incomplete, with only 5 of 8 sentinel hospitals reporting.*

4. GP Out-Of-Hours services surveillance

The Department of Public Health in HSE-NE is collating national data on calls to nine of thirteen GP Out-of-Hours services in Ireland. Records with clinical symptoms reported as flu or influenza are extracted for analysis. This information may act as an early indicator of increased ILI activity. However, data are self-reported by callers and are not based on coded influenza diagnoses.

The proportion of influenza-related calls to GP Out-of-Hours services remained at low levels during week 41 2015 at 1.9% (figure 6).

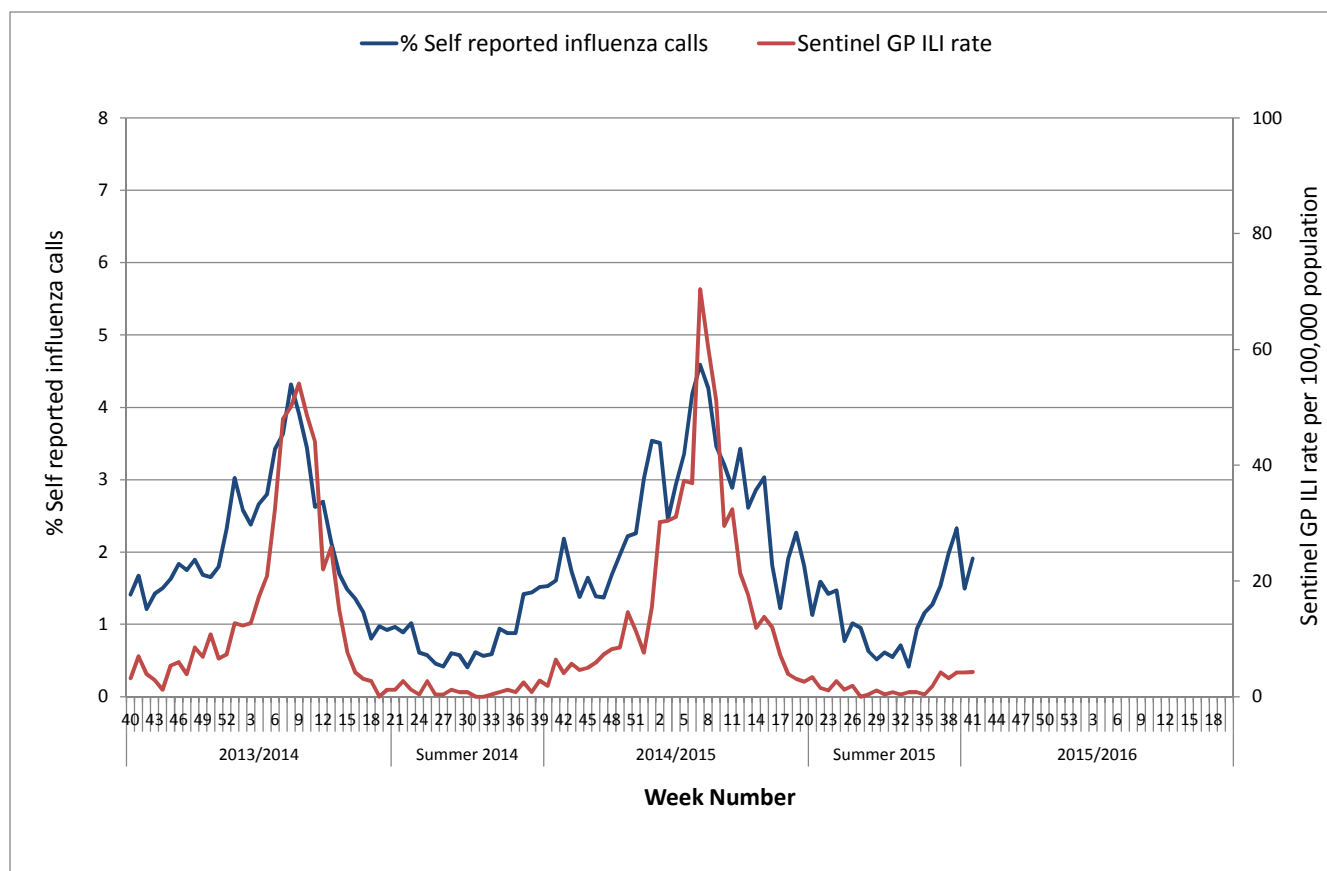


Figure 6: Self-reported influenza-related calls as a proportion of total calls to Out-of-Hours GP Co-ops and sentinel GP ILI consultation rate per 100,000 population by week and season. Source: GP Out-Of-Hours services in Ireland (collated by HSE-NE) & ICGP.

5. Influenza & RSV notifications

Influenza and RSV cases notifications are reported on Ireland’s Computerised Infectious Disease Reporting System (CIDR), including all positive influenza /RSV specimens reported from all laboratories testing for influenza/RSV and reporting to CIDR.

Influenza and RSV notifications are reported in the [Weekly Infectious Disease Report for Ireland](#).

6. Influenza Hospitalisations

Two confirmed influenza hospitalised cases were notified to HPSC for the 2015/2016 season to date: one associated with influenza A(H3) and one with influenza B.

7. Critical Care Surveillance

The Intensive Care Society of Ireland (ICSI) are continuing with the enhanced surveillance system set up during the 2009 pandemic, on all critical care patients with confirmed influenza. HPSC process and report on this information on behalf of the regional Directors of Public Health/Medical Officers of Health.

No confirmed influenza cases were admitted to critical care and reported to HPSC for the 2015/2016 season to date.

8. Mortality Surveillance

Influenza-associated deaths include all deaths where influenza is reported as the primary/main cause of death by the physician or if influenza is listed anywhere on the death certificate as the cause of death. HPSC receives daily mortality data from the General Register Office (GRO) on all deaths from all causes registered in Ireland. These data have been used to monitor excess all-cause and influenza and pneumonia deaths as part of the influenza surveillance system and the European Mortality Monitoring Project. These data are provisional due to the time delay in deaths' registration in Ireland. <http://www.euromomo.eu/>

- There were no reports of any influenza-associated deaths occurring for the 2015/2016 season to date.
- No excess all-cause mortality was reported in Ireland for the 2015/2016 season to date, after correcting GRO data for reporting delays with the standardised EuroMOMO algorithm.

9. Outbreak Surveillance

No acute respiratory outbreaks were reported to HPSC for the 2015/2016 season to date.

10. International Summary

In the European Region, influenza activity was at low levels, as expected at this time of year. As of October 5th 2015, globally, influenza activity decreased or remained low, with only a few countries reporting elevated respiratory illness levels. In the Northern Hemisphere, influenza activity continued at low, inter-seasonal levels with sporadic detections. Increased RSV activity was reported in the USA. See [ECDC](#) and [WHO](#) influenza surveillance reports for further information.

- Further information is available on the following websites:
 - Northern Ireland <http://www.fluawareni.info/>
 - Europe – ECDC <http://ecdc.europa.eu/>
 - Public Health England <http://www.hpa.org.uk/Topics/InfectiousDiseases/InfectionsAZ/SeasonalInfluenza/>
 - United States CDC <http://www.cdc.gov/flu/weekly/fluactivitysurv.htm>
 - Public Health Agency of Canada <http://www.phac-aspc.gc.ca/fluwatch/index-eng.php>
- Information on Middle Eastern Respiratory Syndrome Coronavirus (MERS), including the latest ECDC rapid risk assessment is available on the [ECDC website](#). Further information and guidance documents are also available on the [HPSC](#) and [WHO](#) websites.

11. WHO recommendations on the composition of influenza virus vaccines

The WHO vaccine strain selection committee recommended that vaccines for use in the 2015/2016 influenza season (northern hemisphere winter) contain the following: an A/California/7/2009 (H1N1)pdm09-like virus; an A/Switzerland/9715293/2013 (H3N2)-like virus; a B/Phuket/3073/2013-like virus.

<http://www.who.int/influenza/vaccines/virus/recommendations/en/>

Further information on influenza in Ireland is available at www.hpsc.ie

Acknowledgements

This report was prepared by Lisa Domegan and Joan O'Donnell, HPSC. HPSC wishes to thank the sentinel GPs, the ICGP, NVRL, Departments of Public Health, ICSI and HSE-NE for providing data for this report.