



Weekly report on the epidemiology of COVID-19 in Ireland

Week 7, 2024

- The epidemiological weeks in this report, run from Sunday to Saturday. Please refer to the [HPSC website](#) for a complete list of epidemiological weeks with start and end dates for 2020-2024.
- Data for this report are based on cases notified on the Computerised Infectious Disease Reporting (CIDR) up to midnight 17/02/2024. Data were extracted from CIDR system on 20/02/2024. Data are provisional and subject to ongoing review, validation and update. As a result, figures in this report may differ from previously published figures.
- For epidemiological purposes, HPSC reports deaths by date of death, hospitalised cases are reported by date of notification on CIDR and ICU cases are reported by date of admission to ICU.
- Data should be interpreted in the context of the current testing policy. Testing policies can affect the number and age distribution of confirmed cases notified on CIDR. Information on the current testing policy in Ireland can be found [here](#)
- **From week 47, 2023 this report uses population data from Census 2022. Rates may therefore differ from those reported previously which used population data from Census 2016.**

Key points

Notified confirmed cases

- In week 7 (between February 11 and February 17 2024) there were 376 new confirmed COVID-19 cases reported on CIDR. This is a decrease of 8.5% compared to week 6 when there were 411 confirmed COVID-19 cases notified.
- The highest number of new confirmed COVID-19 cases in week 7 was in the age group of 75-84 years with 19.1% of notified cases in week 7.

Laboratory data of SARS-CoV-2 tests

- In week 7, a total of 5,858 SARS-CoV-2 laboratory tests were performed, of which 352 (6%) were positive. This is a decrease compared to the previous week, 6, when 6.8% were positive.

Deaths

- Since the start of the pandemic 9,627 COVID-19 deaths among notified COVID-19 cases have been reported on CIDR. Of these, 1 had a date of death in week 7.

Table 1: Summary characteristics of COVID-19 cases in Ireland during week 7, 2024 and 2024 to date

	Week 7, 2024		Total 2024	
	Number	Percentage	Number	Percentage
Total number of confirmed cases	376		5,071	
Incidence rate of confirmed cases per 100,000 population	7.3		98.5	
Severe cases				
Number of cases hospitalised*^	159	42.29	2,104	41.49
Number of cases admitted to ICU*^	1		13	
Number of deaths among confirmed cases*^	1		67	

* HPSC reports deaths by date of death, hospitalised cases are reported by date of notification on CIDR and ICU cases are reported by date of admission to ICU.

^ The number of cases hospitalised, cases admitted to ICU and deaths described in the above table relate only to COVID-19 cases where the outcome is known at the time of reporting. It does not reflect all hospitalisations, ICU admissions and deaths related to COVID-19 which occurred during the period covered by the report. It also does not reflect the final number of cases hospitalised, admitted to ICU or deaths for these cases notified during this period as the outcome may not have been notified

Confirmed cases of COVID-19

Since the start of 2024, a total of 5,071 confirmed COVID-19 cases have been notified on CIDR. In the past week, week 7 2024, 376 confirmed COVID-19 cases were reported on CIDR. This is a decrease of 8.5% compared to week 6 when 411 confirmed COVID-19 cases were notified. Figure 1 shows the epidemiological curve of COVID-19 cases notified in Ireland for the last one year to week 7 2024. Data since the start of the pandemic is available on the [Epidemiology of COVID-19 in Ireland infohub](#).

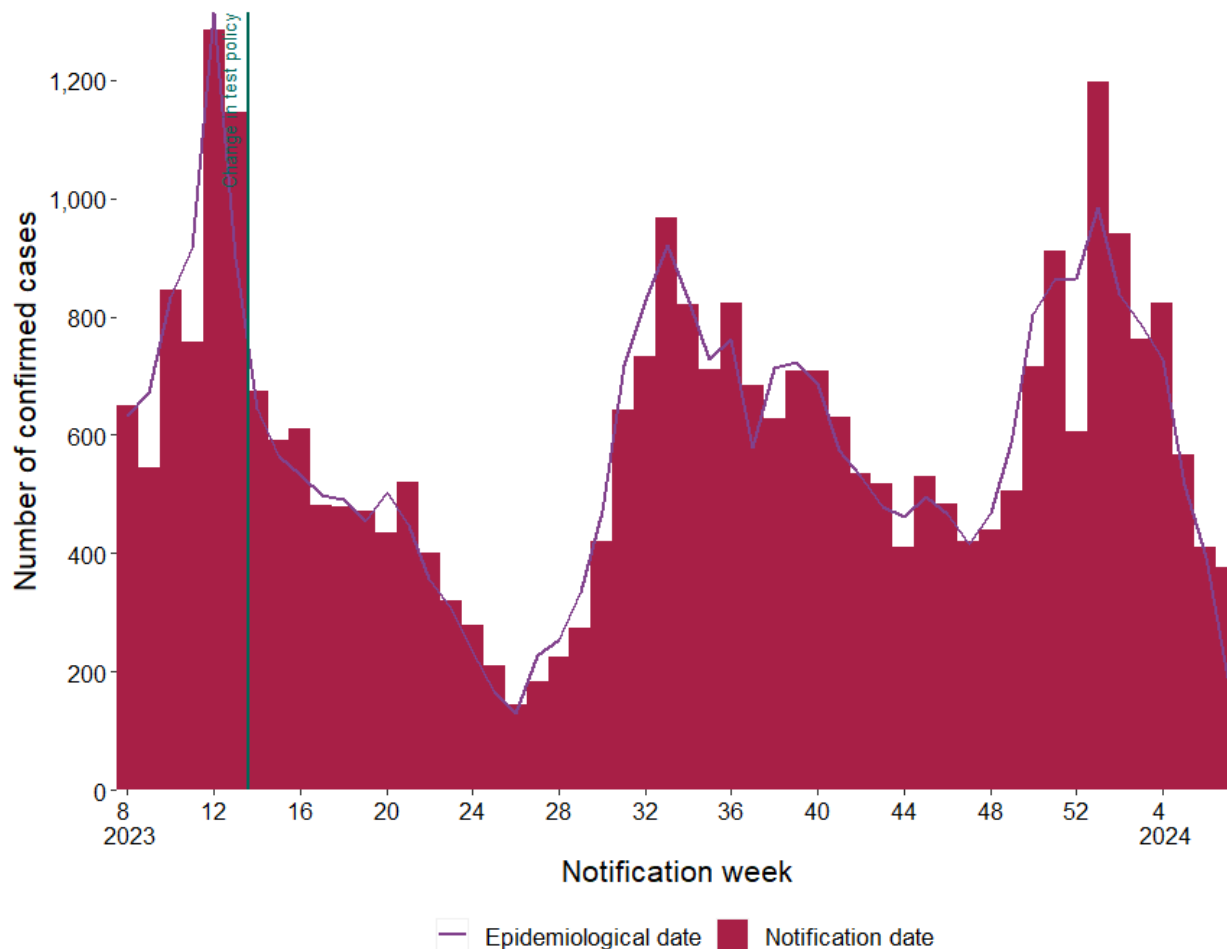


Figure 1a: Number of confirmed COVID-19 cases by notification week and epidemiological date in Ireland between week 8, 2023 and week 7, 2024. The red bars represent the number of confirmed cases by notification date. The purple line represents the number of cases by epidemiological date. The dark blue horizontal lines indicate a change in test policy¹

¹ Since 30/03/2023 (week 13, 2023), community test centres closed and PCR testing was only performed based on clinical assessment.

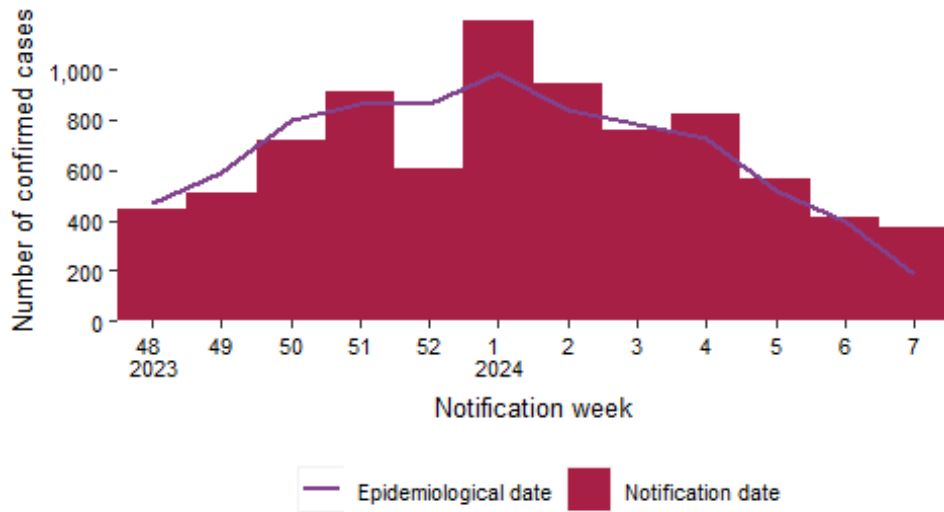
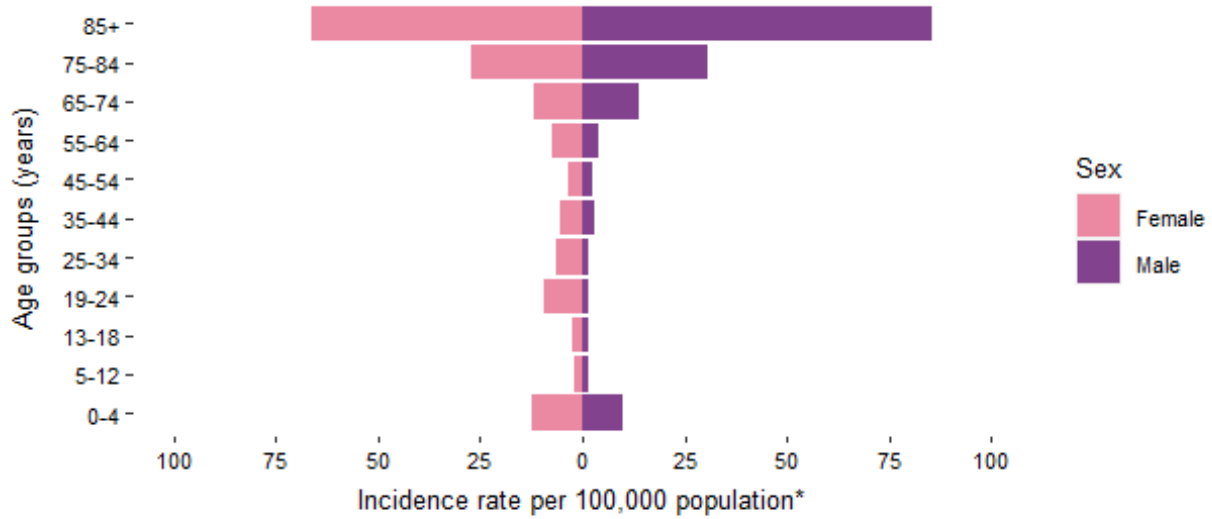


Figure 1b: Number of confirmed COVID-19 cases by notification week and epidemiological date in Ireland in the last 12 weeks. The red bars represent the number of confirmed cases by notification date. The purple line represents the number of cases by epidemiological date.

Confirmed COVID-19 cases by age and sex

Table 2: Summary characteristics by age and sex of COVID-19 cases notified in Ireland during week 7, 2024 and 2024 to date.

	Week 7, 2024		Total 2024	
	Number	Percentage	Number	Percentage
Gender				
Males	154	41.0	2,367	46.7
Females	222	59.0	2,704	53.3
M:F ratio	0.69		0.88	
Age (years)				
Mean age	56		59	
Median age	65		68	
Age range	0 - 99		0 - 103	
Age groups (years)				
0-4	33	8.8	440	8.7
5-12	10	2.7	103	2.0
13-18	8	2.1	75	1.5
19-24	20	5.3	127	2.5
25-34	25	6.6	298	5.9
35-44	35	9.3	409	8.1
45-54	21	5.6	385	7.6
55-64	33	8.8	499	9.8
65-74	57	15.2	732	14.4
75-84	72	19.1	1,133	22.3
85+	62	16.5	870	17.2
Unknown	NA	0.0	0	0.0



*Excluding 0 for whom age is unknown, 0 for whom sex is unknown and 0 for whom both are unknown

Figure 2: Age and sex specific incidence rates of confirmed COVID-19 cases per 100,000 population for current week 7, 2024

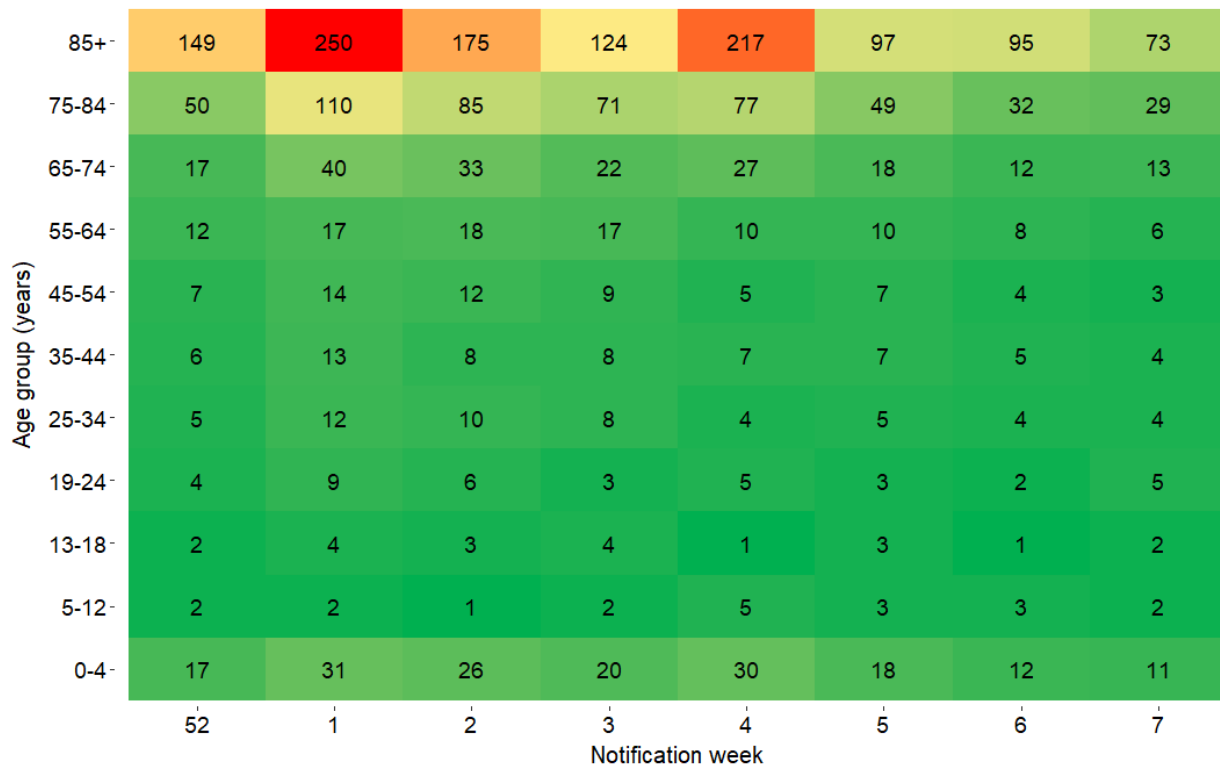


Figure 3: Heat map of weekly age-specific incidence rates of confirmed COVID-19 cases per 100,000 population in Ireland for the last 8 weeks

Cases and incidence by county

Table 3: Characteristics of confirmed COVID-19 cases by county and descending incidence rate per 100,000 notified in Ireland, during week 7, 2024*

County	Number of cases	Percent	Incidence rate per 100,000
Kilkenny	14	3.7	13.4
Donegal	22	5.9	13.2
Offaly	11	2.9	13.2
Tipperary	22	5.9	13.1
Carlow	8	2.1	12.9
Louth	16	4.3	11.5
Sligo	8	2.1	11.4
Wexford	18	4.8	11.0
Clare	13	3.5	10.2
Waterford	12	3.2	9.4
Monaghan	6	1.6	9.2
Leitrim	3	0.8	8.5
Limerick	15	4.0	7.2
Dublin	102	27.1	7.0
Kerry	11	2.9	7.0
Galway	18	4.8	6.5
Cork	36	9.6	6.2
Cavan	4	1.1	4.9
Meath	10	2.7	4.5
Laois	4	1.1	4.4
Roscommon	3	0.8	4.3
Westmeath	4	1.1	4.2
Kildare	9	2.4	3.6
Wicklow	4	1.1	2.6
Longford	1	0.3	2.1
Mayo	2	0.5	1.4

* County data may not be accurately reflected in the most recent week due to ongoing data validations

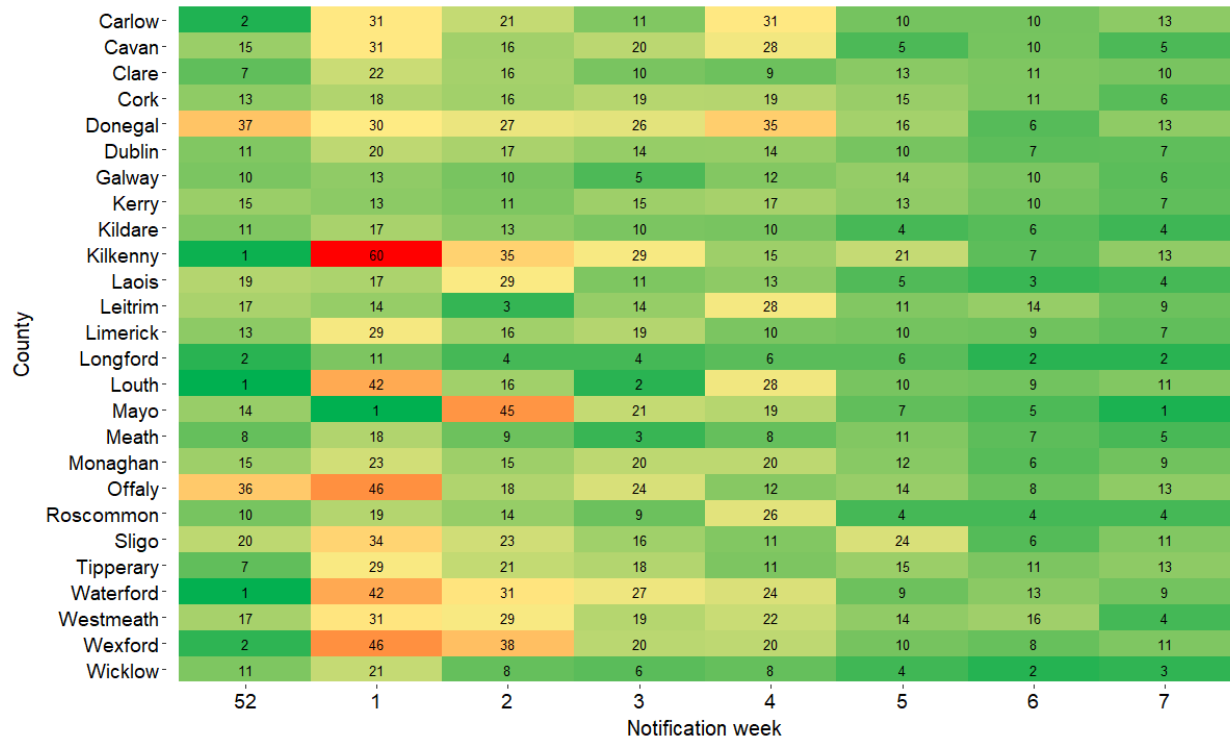


Figure 4: Heat map of weekly incidence rates of confirmed COVID-19 cases per 100,000 population, by county, notified in Ireland for the last 8 weeks

Hospitalisations

A total of 159 hospitalised confirmed COVID-19 cases were recorded in the latest epidemiological week, week 7, 2024.

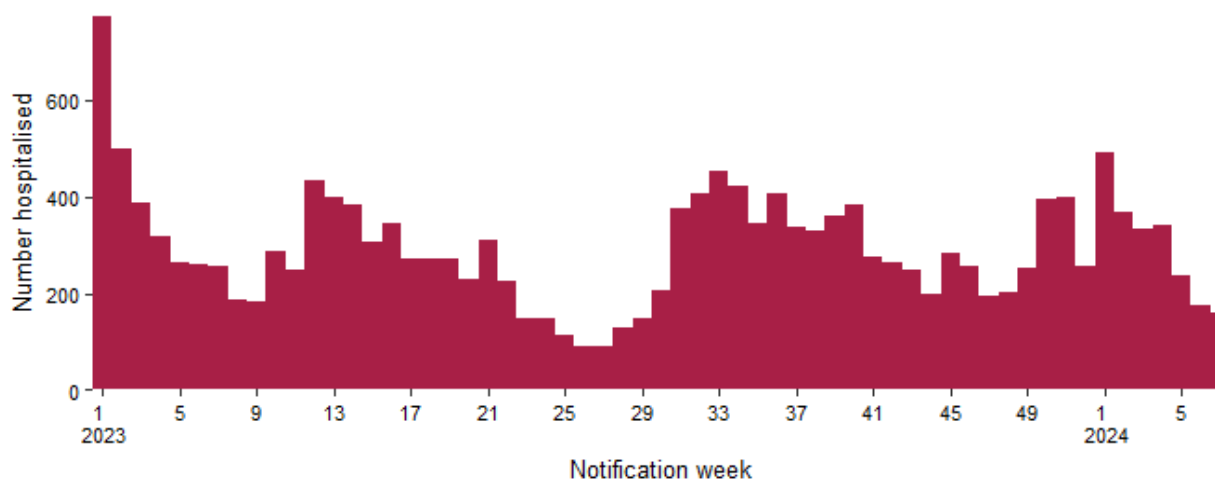


Figure 5: Hospitalisations among confirmed COVID-19 cases notified on CIDR in Ireland between week 1, 2023 and week 7, 2024

Table 4: Number of COVID-19 cases and hospital admissions by age group in Ireland for week 7, 2024 based on week of notification.

Age group	Week 7, 2024			Total 2024		
	Total cases	Hospitalised cases		Total cases	Hospitalised cases	
	Number of cases	Number of cases	Percentage	Number of cases	Number of cases	Percentage
0-4	33	13	39.4	440	165	37.5
5-12	10	5	50.0	103	28	27.2
13-18	8	2	25.0	75	28	37.3
19-24	20	5	25.0	127	34	26.8
25-34	25	2	8.0	298	63	21.1
35-44	35	10	28.6	409	97	23.7
45-54	21	6	28.6	385	96	24.9
55-64	33	10	30.3	499	203	40.7
65-74	57	33	57.9	732	374	51.1
75-84	72	38	52.8	1,133	570	50.3
85+	62	35	56.5	870	446	51.3
Unknown	0	0	0.0	0	0	0.0

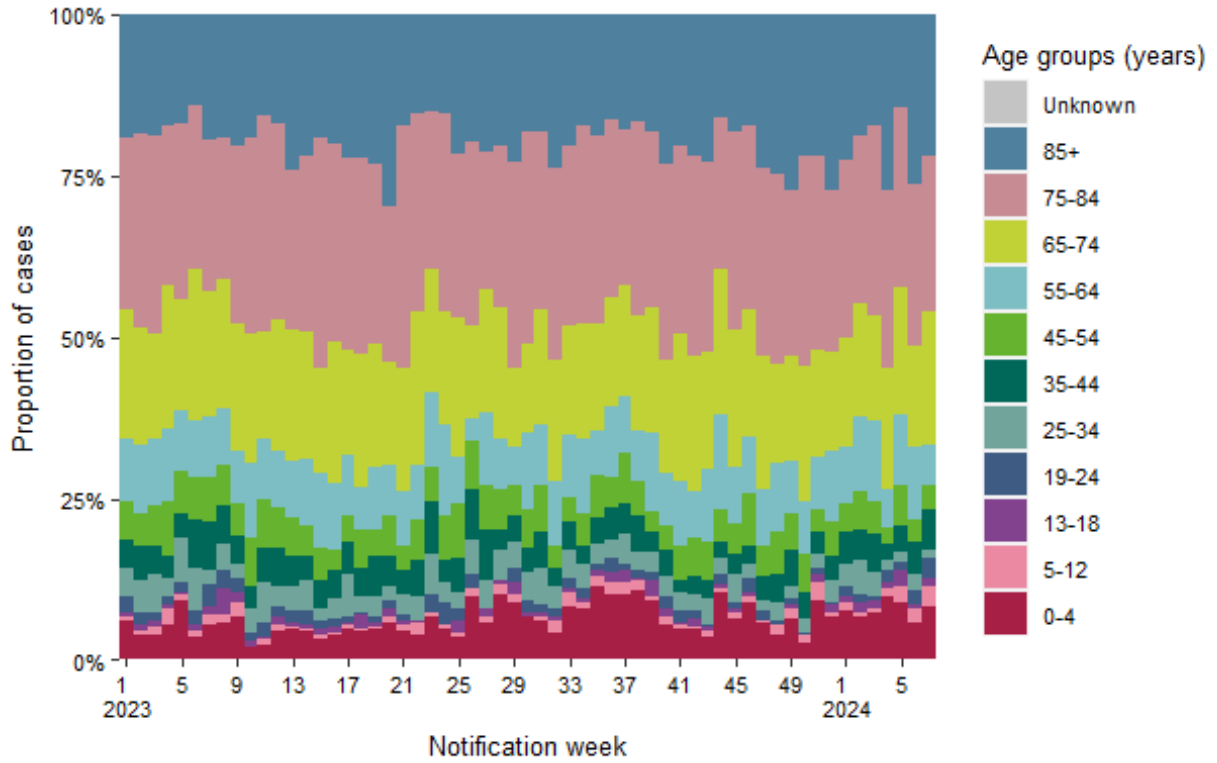


Figure 6: Age distribution of hospitalised confirmed COVID-19 cases notified on CIDR in Ireland between week 1, 2023 and week 7, 2024

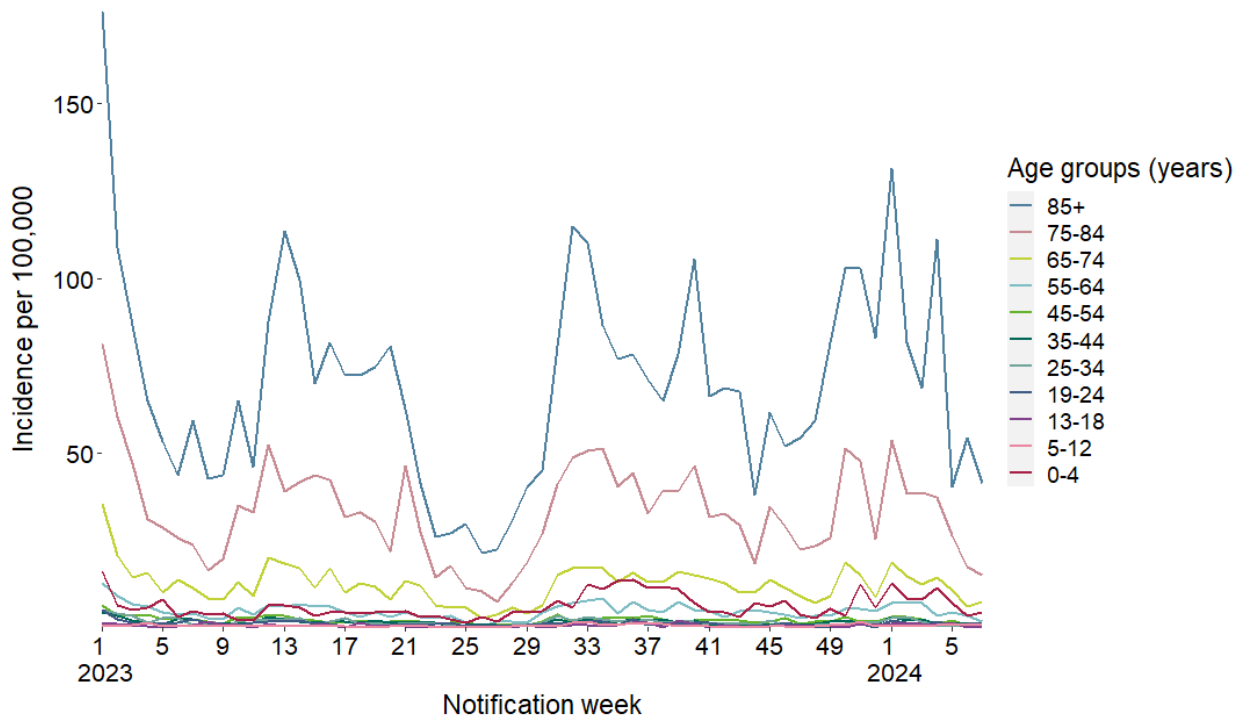


Figure 7: Incidence rate by age group of hospitalisations among confirmed COVID-19 cases on CIDR in Ireland between week 1, 2023 and week 7, 2024

ICU admissions

A total of 1 COVID-19 cases were admitted to ICU in the latest epidemiological week 7 2024.

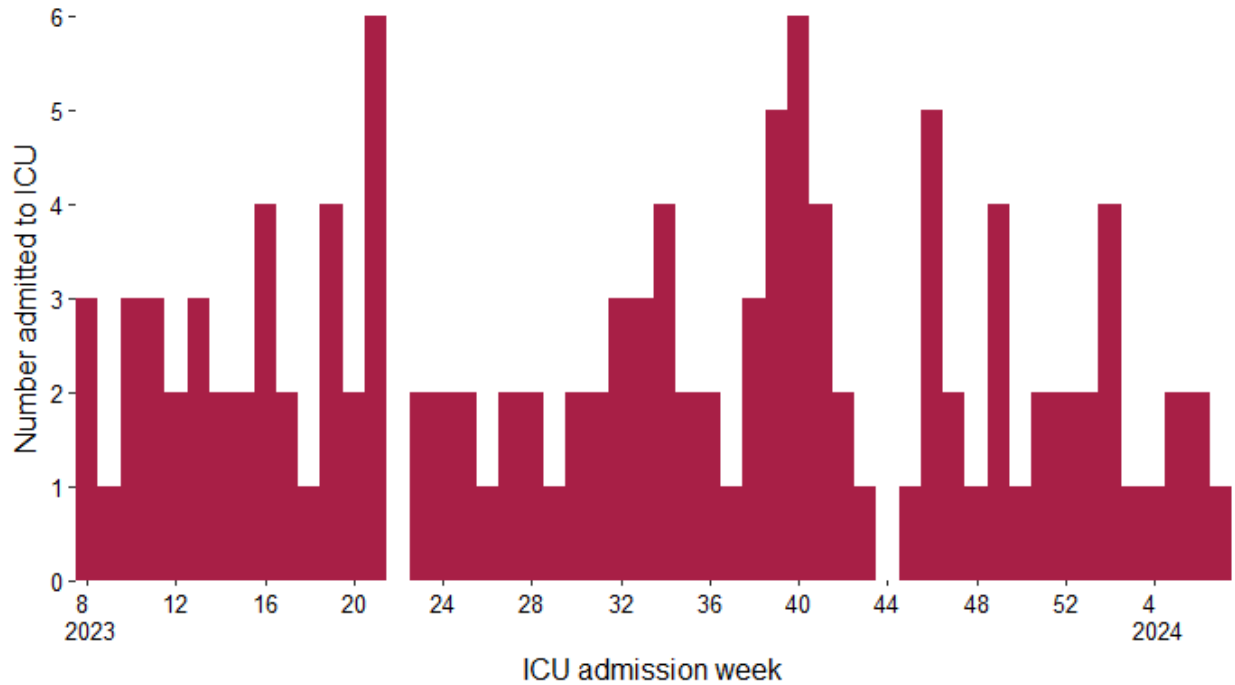


Figure 8: Number of COVID-19 ICU admissions in Ireland by week of ICU admission, between week 8, 2023 and week 7, 2024²

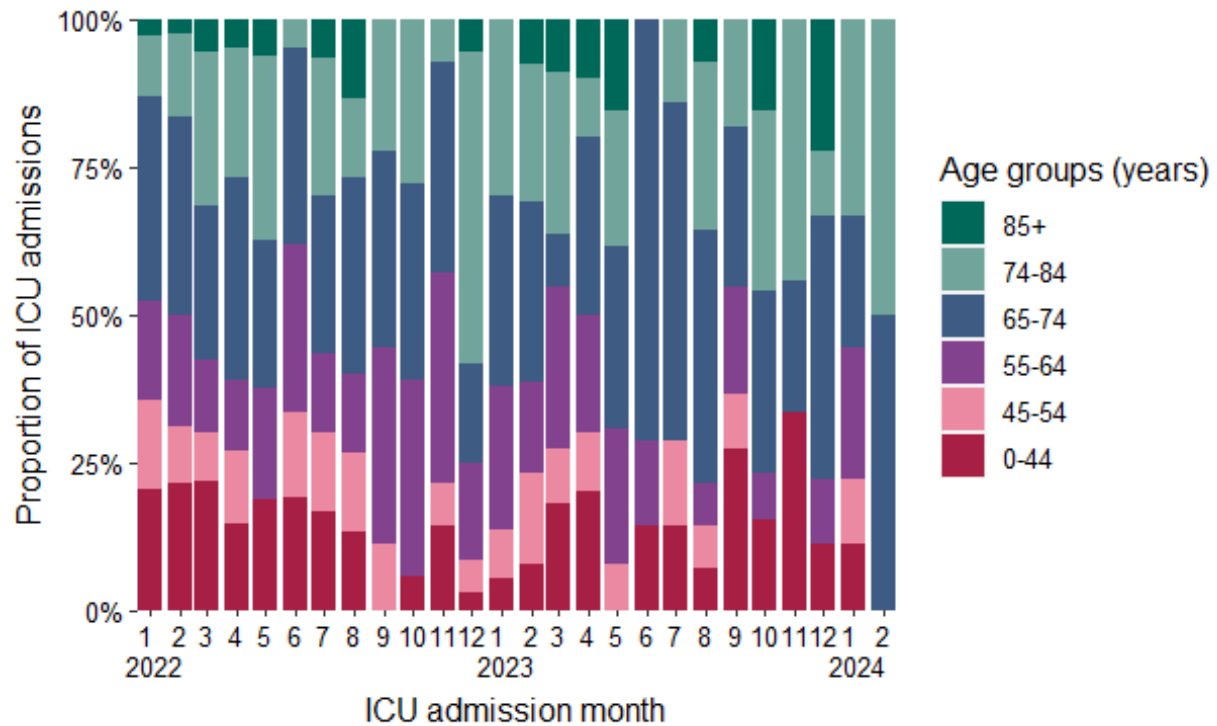


Figure 9: Age distribution of confirmed COVID-19 cases admitted to ICU by month of admission between January, 2022 and February, 2024

² Please note that most recent weeks may not yet reflect all admissions

Deaths

Please note the below figures and tables include all cases (confirmed, probable and possible) who have died.

A total of 1 cases had a date of death in the latest epidemiological week, 7. The mean and median age of those who died in that week was 82 years respectively.

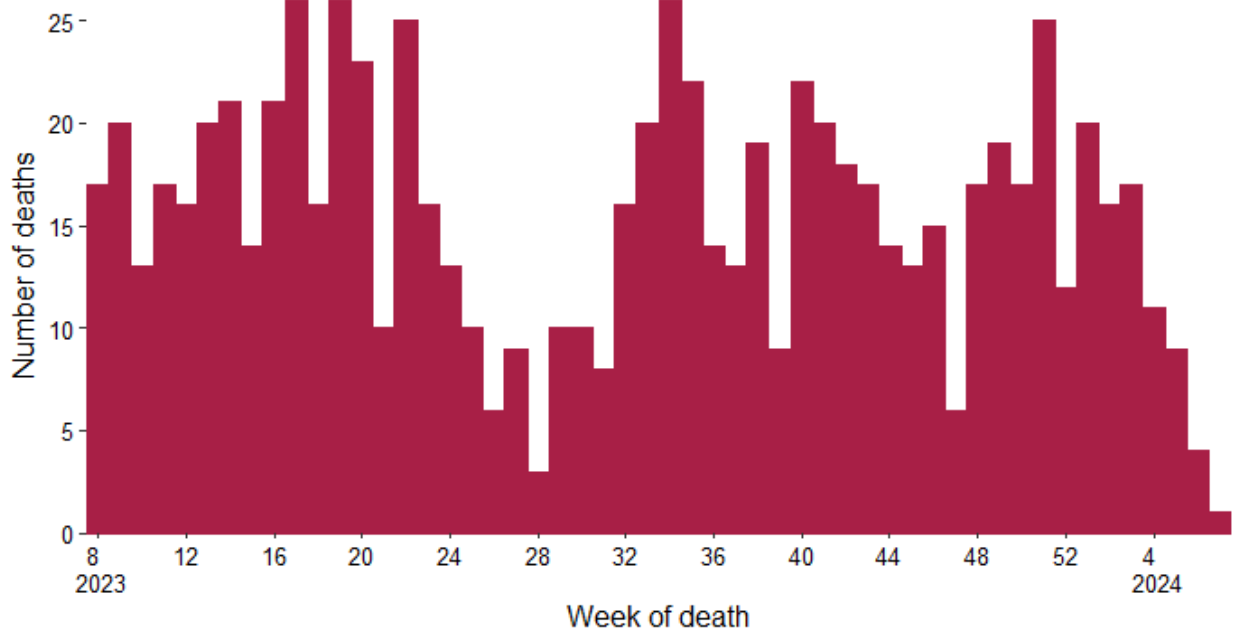


Figure 10: Total number of COVID-19 deaths notified by week of death, cases with a date of notification from week 8, 2023 to 7, 2024³. Date of death missing for 0 of the reported deaths

³ Please note that most recent weeks may not yet reflect all deaths

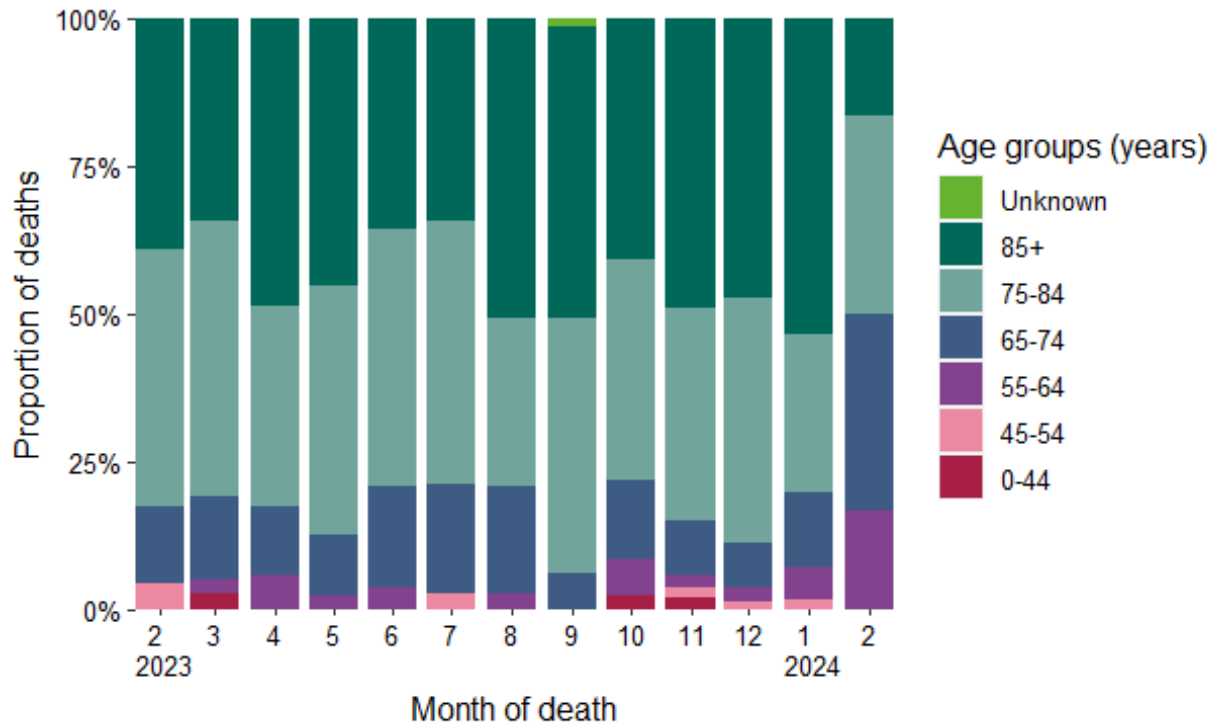


Figure 11: Age distribution of COVID-19 deaths notified on CIDR in Ireland between February, 2023 and February, 2024

Laboratory data of SARS-CoV-2 tests

In week 7, a total of 5,858 SARS-CoV-2 tests were performed, of which 352 (6%) were positive.

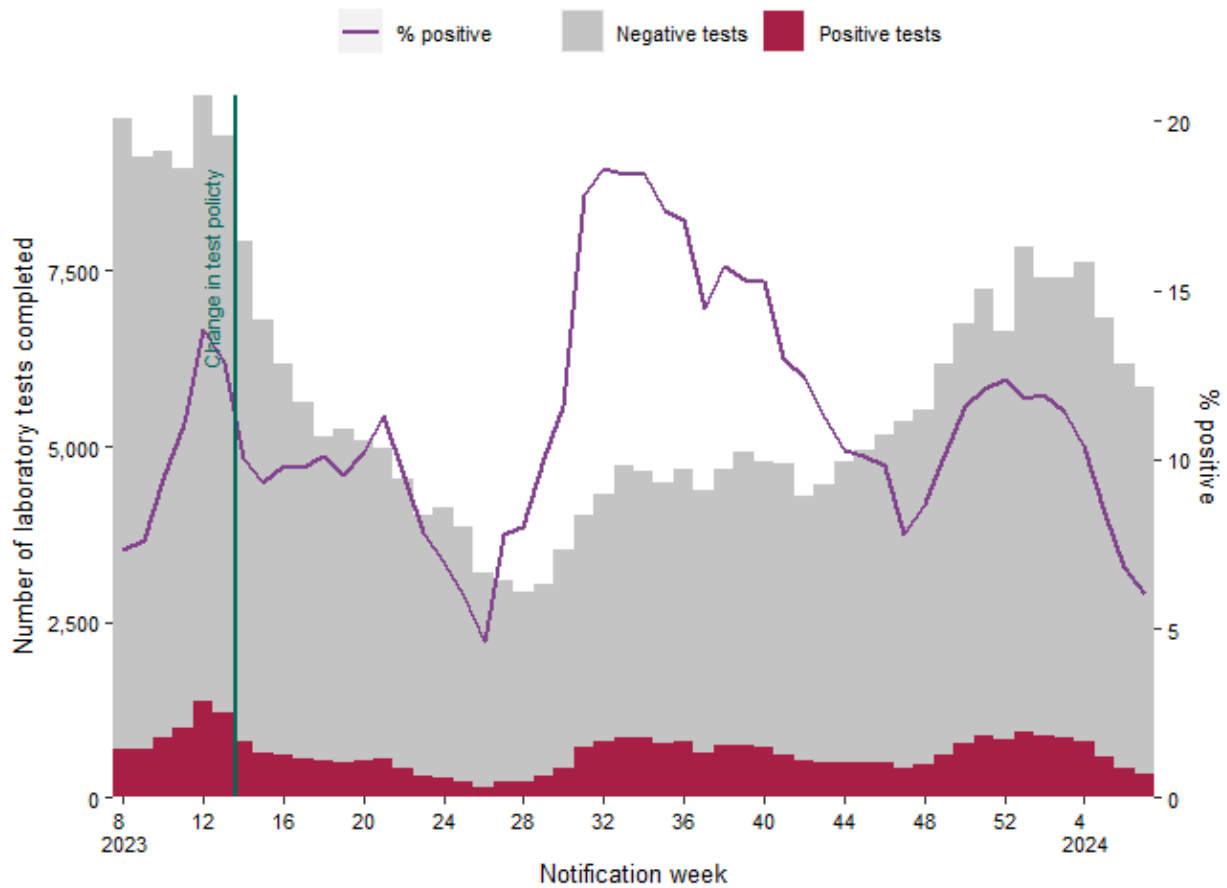


Figure 12: Number of completed laboratory tests by result and % positive tests⁴ in Ireland between week 8, 2023 and week 7, 2024. Data source: Deloitte Ireland LLP⁵

⁴ Positive tests refer to all positive specimens and includes duplicates and individuals who were retested.

⁵ Since 30/03/2023 (week 13, 2023), community test centres closed and laboratory testing was only performed based on clinical assessment.

Notes

Technical Notes

1. Data Source

Data are based on statutory notifications and were extracted from Computerised Infectious Disease Reporting (CIDR) system and the HSE COVID care tracker. Data are provisional and subject to ongoing review, validation and update. As a result, figures in this report may differ from previously published figures. Slide with Laboratory testing for SARS-CoV-2 data provided by Deloitte Ireland LLP

2. Epidemiological date

Epidemiological date is based on the earliest of dates available on the case and taken from date of onset of symptoms, date of diagnosis, laboratory specimen collection date, laboratory received date, laboratory reported date or event creation date/notification date on CIDR. By using this date rather than event creation/ notification date, adjusts for any delays in testing/notification. Further information on epidemiological dates and weeks can be found on the [HPSC website](#).

3. Population data

Population data were taken from Census 2022. Data were aggregated into the following age groups for the analysis: 0-4 years, 5-12 years, 13-18 years, 19-24 years, 25-34 years, 35-44 years, 45-54 years, 55-64 years, 65-74 years, 75-84 years and ≥ 85 years.

Acknowledgements

Sincere thanks are extended to all those who are participating in the collection of data and reporting of data used in these reports. This includes the HSE COVID-19 Contact Management Programme (CMP), staff in ICU units, notifying clinicians, laboratory staff, public health doctors, nurses, surveillance scientists, microbiologists and administrative staff.

Please refer to the Health Protection Surveillance (HPSC) website for

- [Epidemiology of COVID-19 in Ireland infohub](#)
- [Outbreaks/clusters in Ireland COVID-19 weekly report](#)
- [SARS-CoV-2 wastewater surveillance programme weekly reports](#)
- [Virus variants in Ireland COVID-19 summary report](#)
- [Epidemiology of intensive care admissions in cases of COVID-19 in Ireland](#)